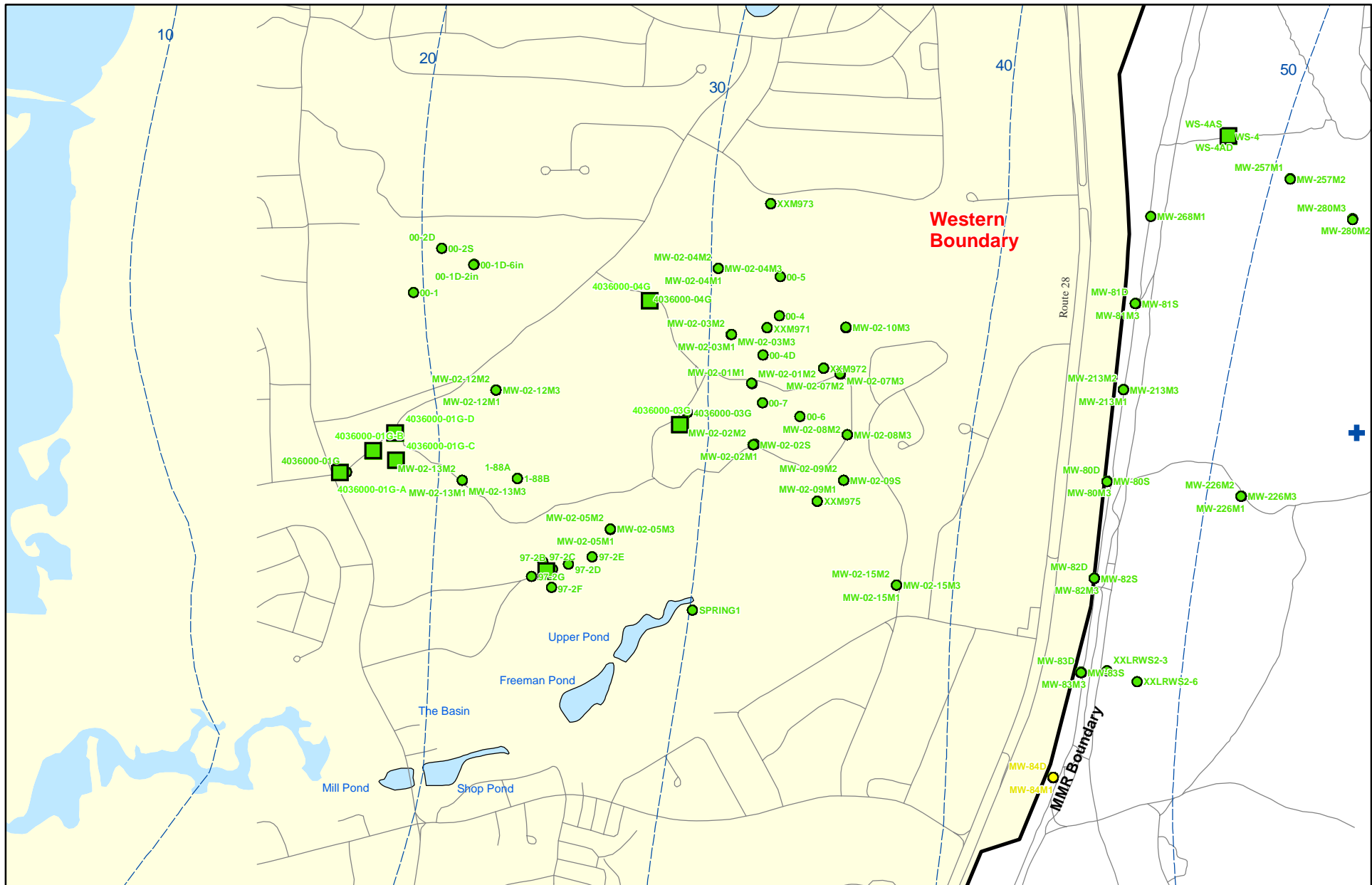


**Explosives in Groundwater Compared to Maximum Contaminant Level/Health Advisories Validated Data as of 12/31/08**



Sources & Notes:  
 Base map data from US Geological Survey  
 7 1/2 minute Topographic maps  
 Source: Office of Geographic and  
 Environmental Information (MassGIS)  
 Commonwealth of Massachusetts  
 Executive Office of Environmental Affairs

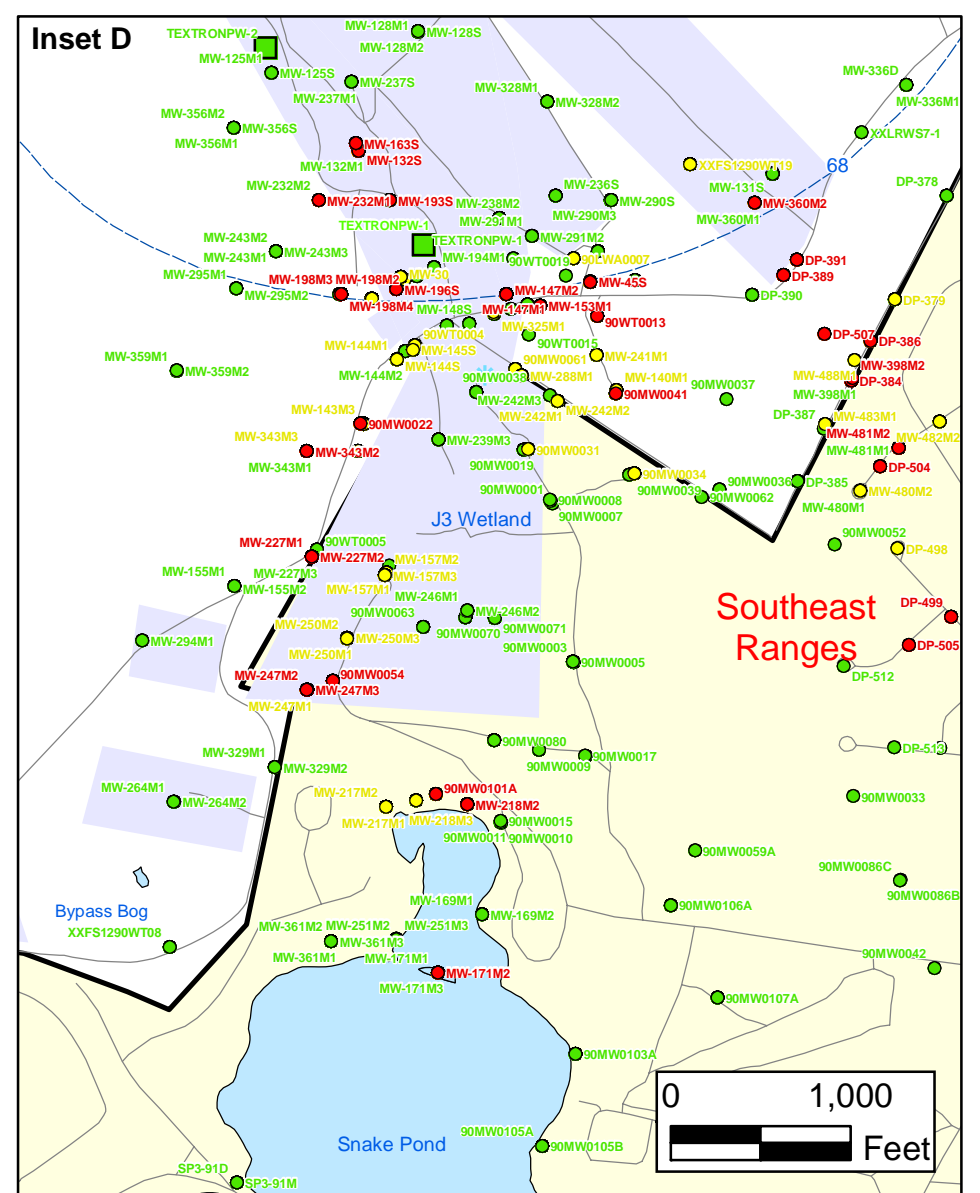
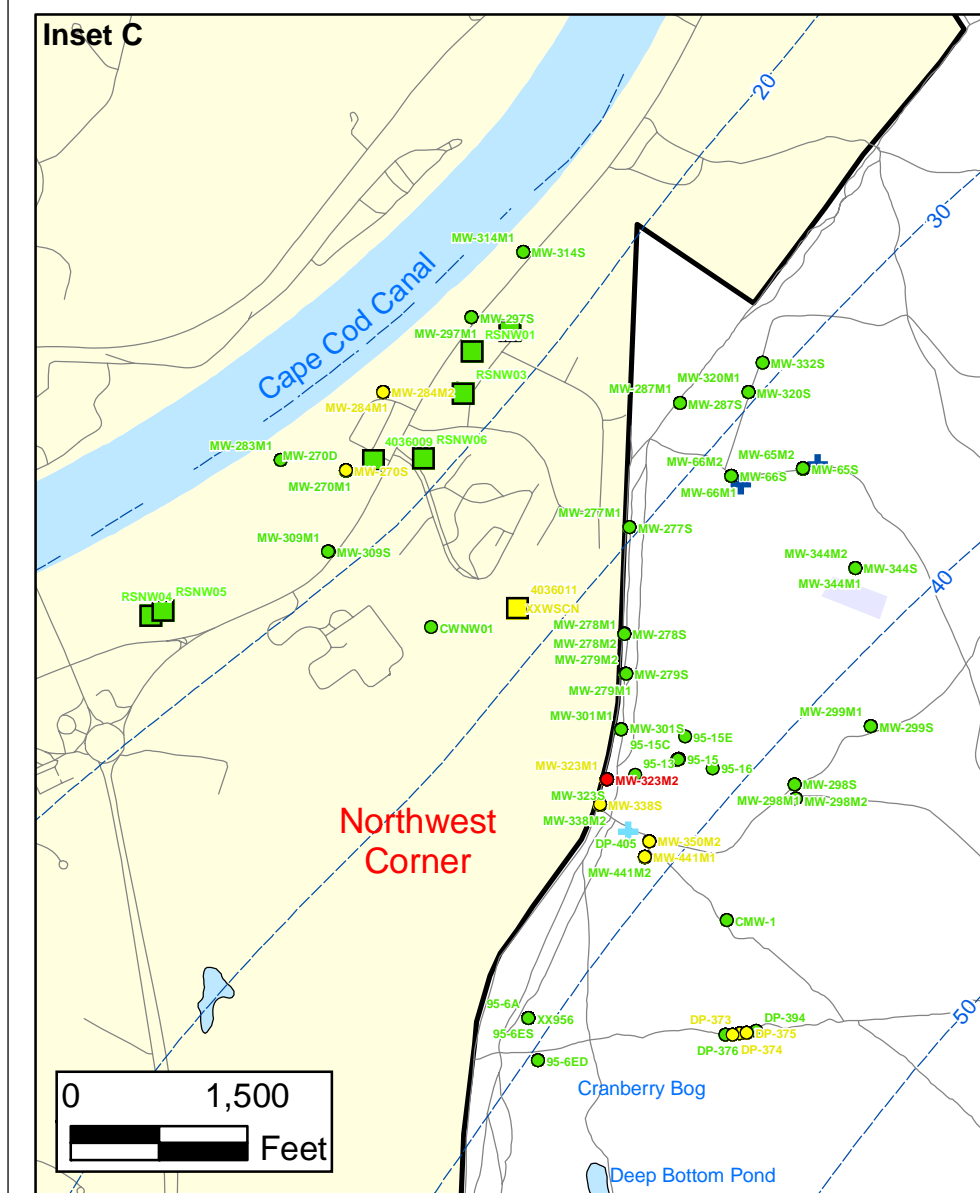
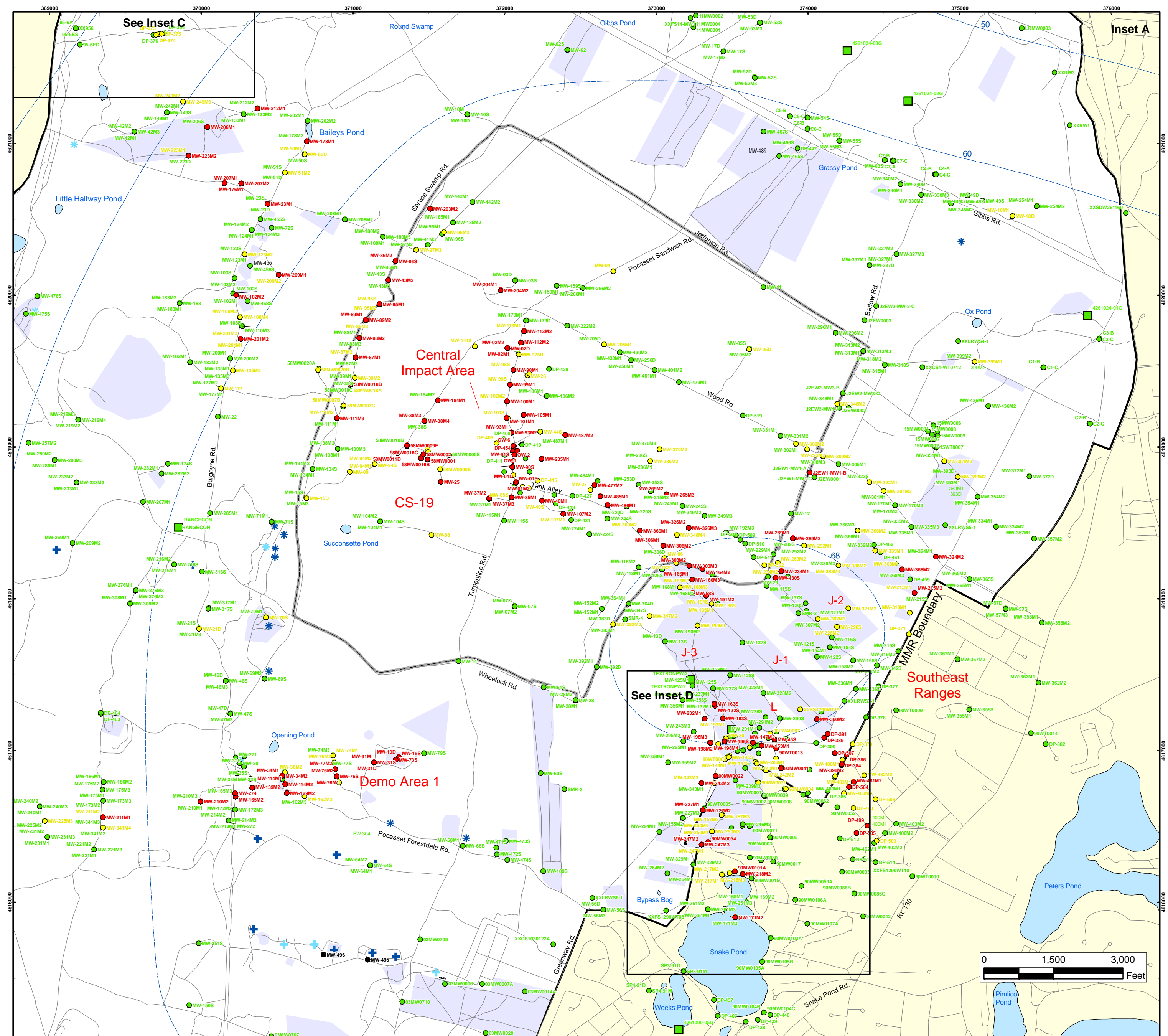
- Validated Detection Less than Maximum Contaminant Level/Health Advisories
- Validated Non-Detect
- + Current Gun Position
- Validated Non-Detect Water Supply Well
- Proposed Water Supply Well
- Water Table Contour (Feet NGVD)  
AMEC, September 2003

**Explosives in Groundwater Compared to Maximum Contaminant Level/Health Advisories**  
**Validated Data as of 12/31/08**



Note: Map dot colors are representative of the highest historical concentration at each well and not the current concentration level.  
 Historical data presented on this figure range from November 1996 through 2007.

ECC-MMR  
 Cape Cod, Massachusetts



### Explosives in Groundwater Compared to Maximum Contaminant Level/Health Advisories

**Validated Data as of 12/31/08**

- Validated Detection Greater than or Equal to Maximum Contaminant Level/Health Advisories
- Validated Detection Less than Maximum Contaminant Level/Health Advisories
- Validated Non-Detect
- Data Pending
- Military Range Areas
- + Current Gun Position
- \* Current Mortar Position
- + Old Gun Position
- \* Old Mortar Position
- Validated Non-Detect Water Supply Well
- Validated Detection Less than Maximum Contaminant Level/Health Advisories Water Supply Well
- Water Table Contour (Feet NGVD), AMEC, September 2003

Note: Map dot colors are representative of the highest historical concentration at each well and not the current concentration level. Historical data presented on this figure range from November 1996 through 2007.

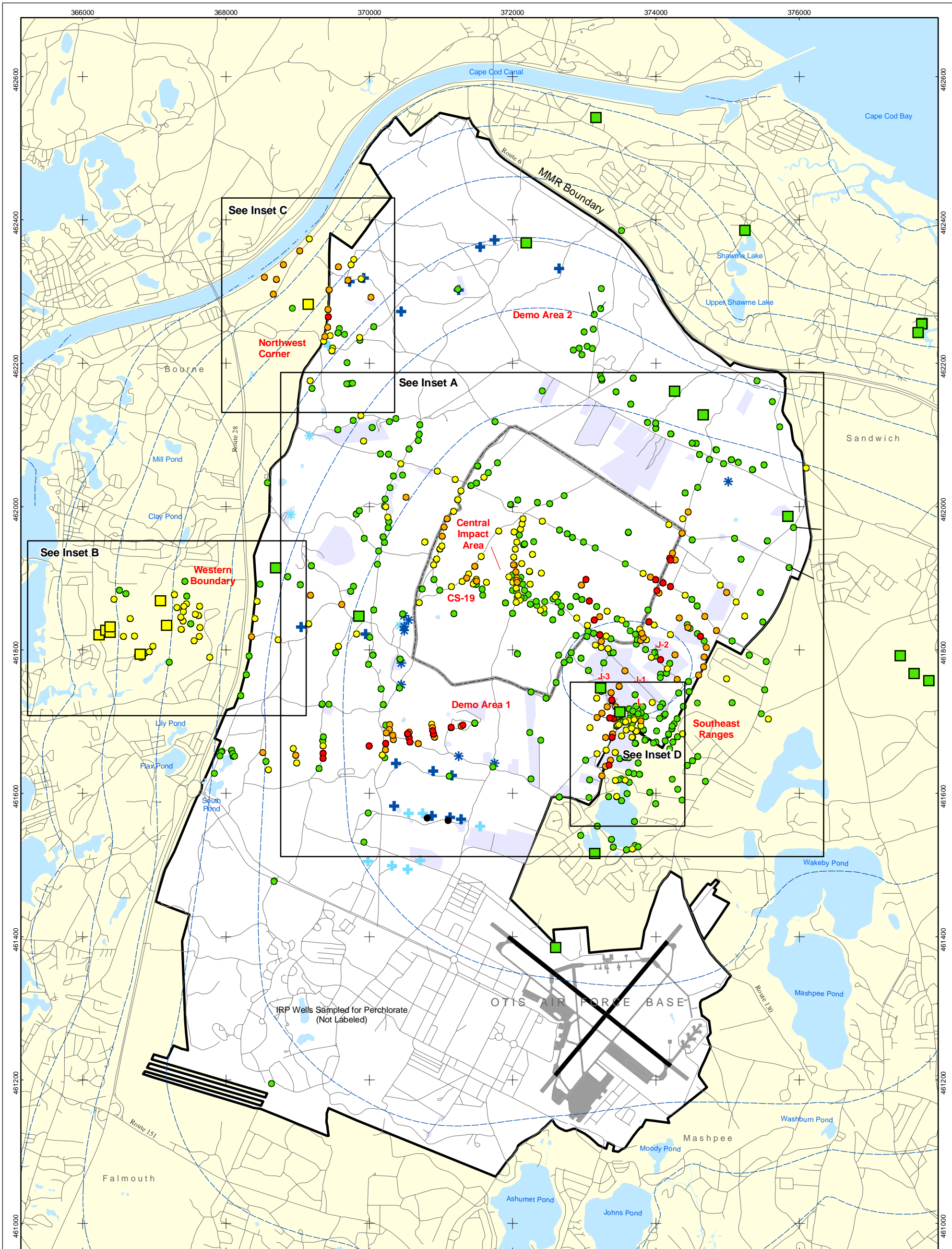
**Impact Area  
Groundwater Study Program**

ECC-MMR  
Cape Cod, Massachusetts

Sources & Notes  
Base map data from US Geological Survey  
7 1/2 minute Topographic Maps  
Source: Office of Geographic and  
Environmental Information (MassGIS)  
Environmental Information (MassGIS)  
Executive Office of Environmental Affairs

**FIGURE**  
**1**

**Inset Map**

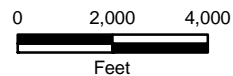


- Validated Detection Greater than or Equal to 24 ppb
- Validated Detection Greater than or Equal to 2 and Less than 24 ppb
- Validated Detection Greater than Non-Detect and Less than 2 ppb
- Validated Non-Detect

Note: Map dot colors are representative of the highest historical concentration at each well and not the current concentration level. Historical data presented on this figure range from November 1996 through 2007.

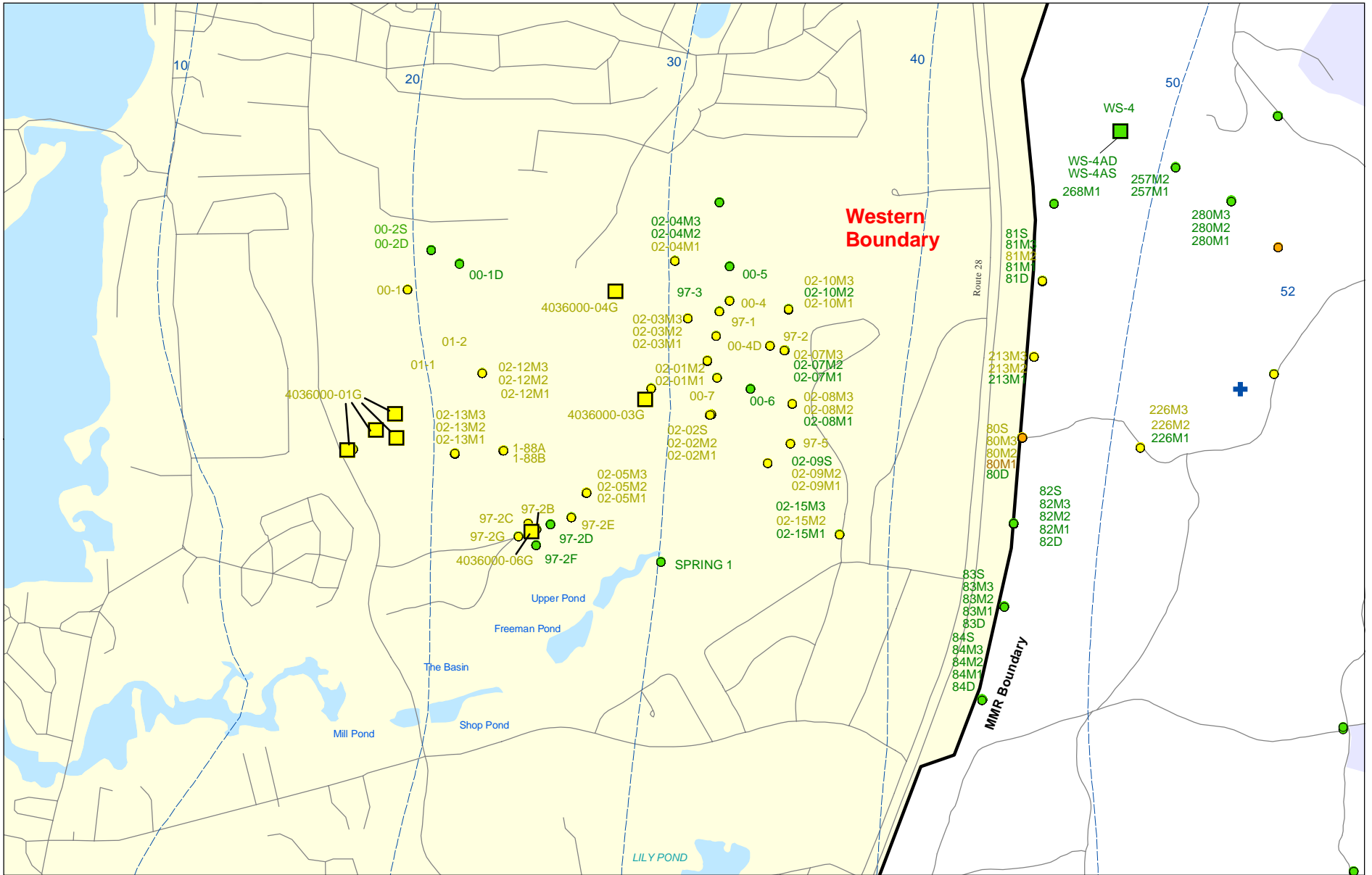
- Data Pending
- Proposed Monitoring Well
- ⊕ Current Gun Position
- ⊛ Current Mortar Position
- ⊕ Old Gun Position
- ⊛ Old Mortar Position

- Validated Non-Detect Water Supply Well
- Validated Detection Less than 2 ppb Water Supply Well
- Proposed Water Supply Well
- Water Table Contour (Feet NGVD) AMEC, September 2003
- Military Range Areas



Sources & Notes  
 Base map data from US Geological Survey  
 7 1/2 minute Topographic Maps  
 Source: Office of Geographic and Environmental Information (MassGIS)  
 Commonwealth of Massachusetts  
 Executive Office of Environmental Affairs

**Perchlorate in Groundwater  
 Compared to a 2 ppb Concentration  
 Validated Data as of 12/31/08**



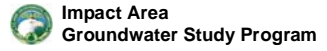
Sources & Notes:  
 Base map data from US Geological Survey  
 7 1/2 minute Topographic maps.  
 Source: Office of Geographic and  
 Environmental Information (MassGIS)  
 Commonwealth of Massachusetts  
 Executive Office of Environmental Affairs

- Validated Detection Greater than or Equal to 2 and Less than 24 ppb
- Validated Detection Greater than Non-Detect and Less than 2 ppb
- Validated Non-Detect

Note: Map dot colors are representative of the highest historical concentration at each well and not the current concentration level. Historical data presented on this figure range from November 1996 through 2007.

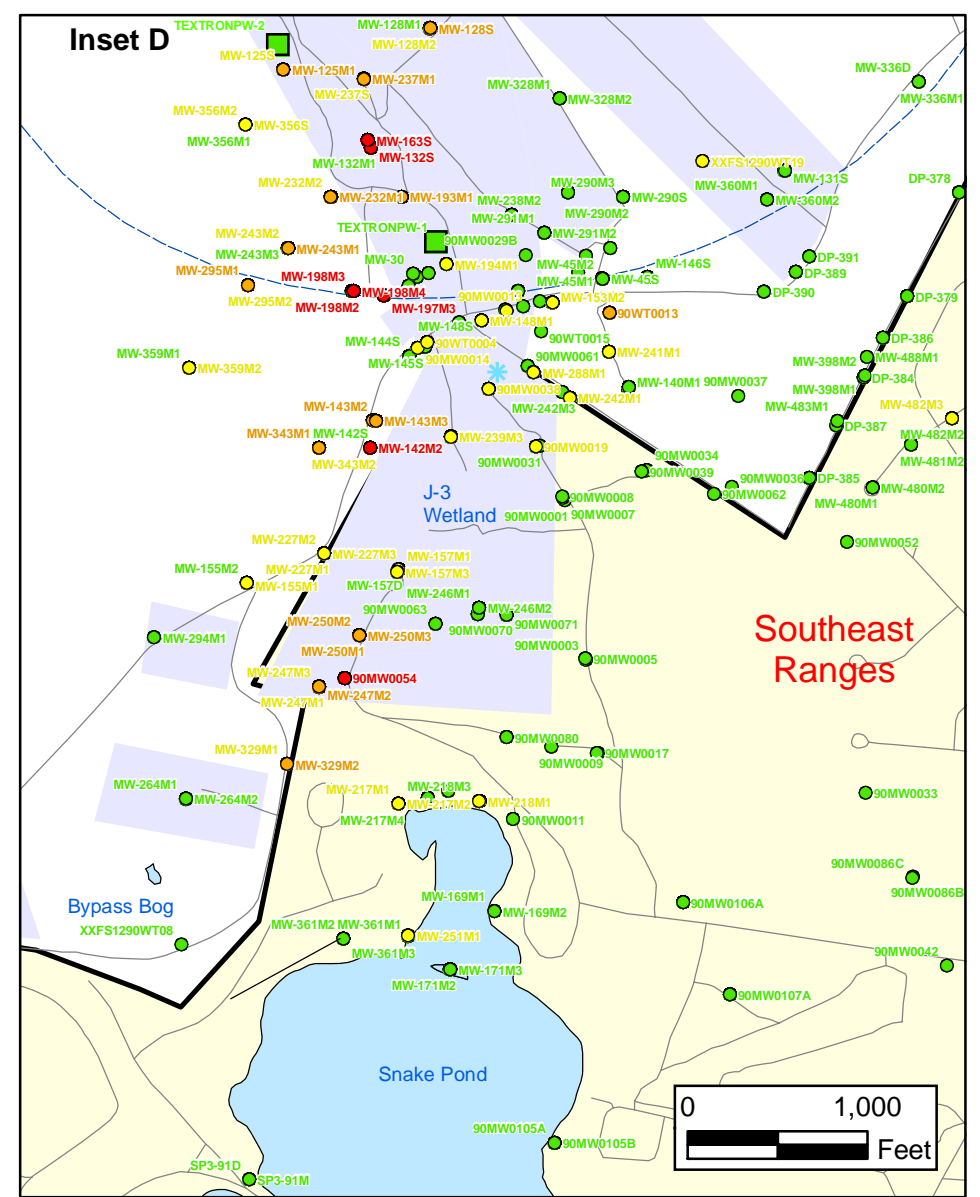
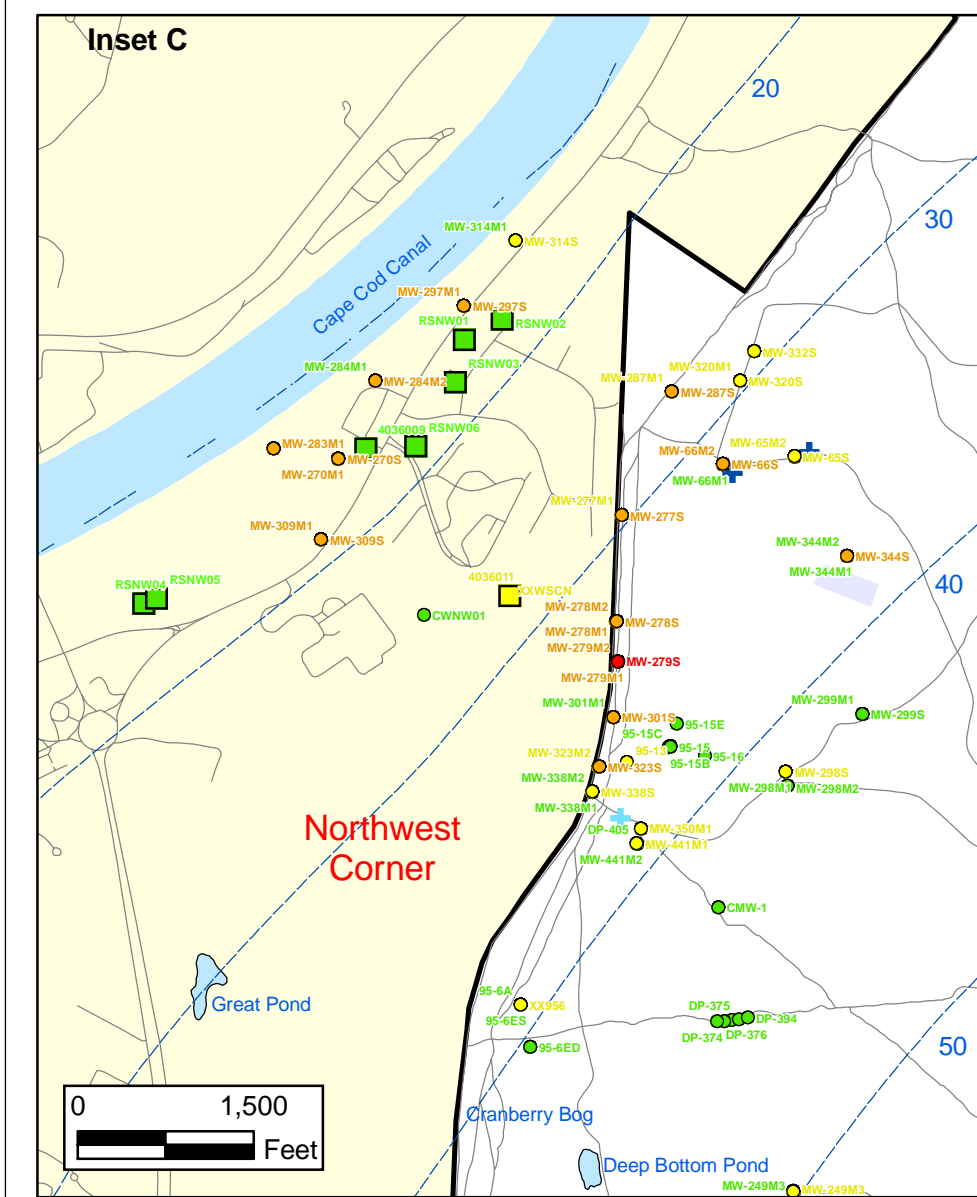
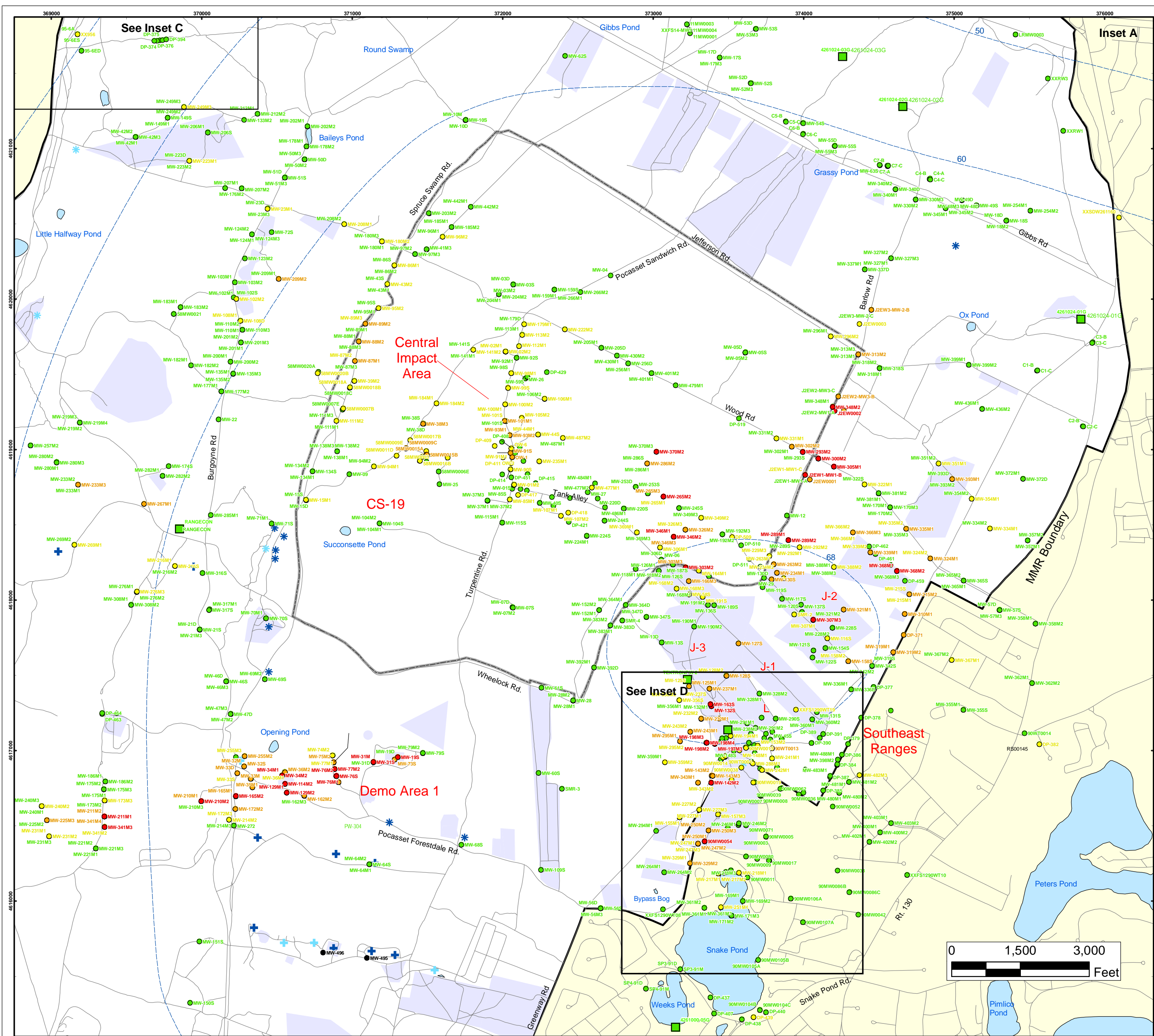
- Validated Detection Less than 2 ppb Water Supply Well
- Validated Non-Detect Water Supply Well
- + Current Gun Position
- Water Table Contour (Feet NGVD) AMEC, September 2003

### Perchlorate in Groundwater Compared to a 2 ppb Concentration Validated Data as of 12/31/08



ECC-MMR  
 Cape Cod, Massachusetts

FIGURE  
 Inset Map B **8**



### Perchlorate in Groundwater Compared to a 2 PPB Concentration Validated Data as of 12/31/08

- Validated Detection Greater than or Equal to 24 ppb
- Validated Detection Greater than or Equal to 2 and Less than 24 ppb
- Validated Detection Less than 2 ppb
- Validated Non-Detect
- Data Pending
- Military Range Areas
- + Current Gun Position
- \* Current Mortar Position
- + Old Gun Position
- \* Old Mortar Position
- Validated Non-Detect Water Supply Well
- Validated Detection Less Than 2 ppb Water Supply Well
- Water Table Contour (Feet NGVD), AMEC, September 2003

Note: Map dot colors are representative of the highest historical concentration at each well and not the current concentration level. Historical data presented on this figure range from November 1996 through 2007.

ECC-MMR  
Cape Cod, Massachusetts

FIGURE  
**8**