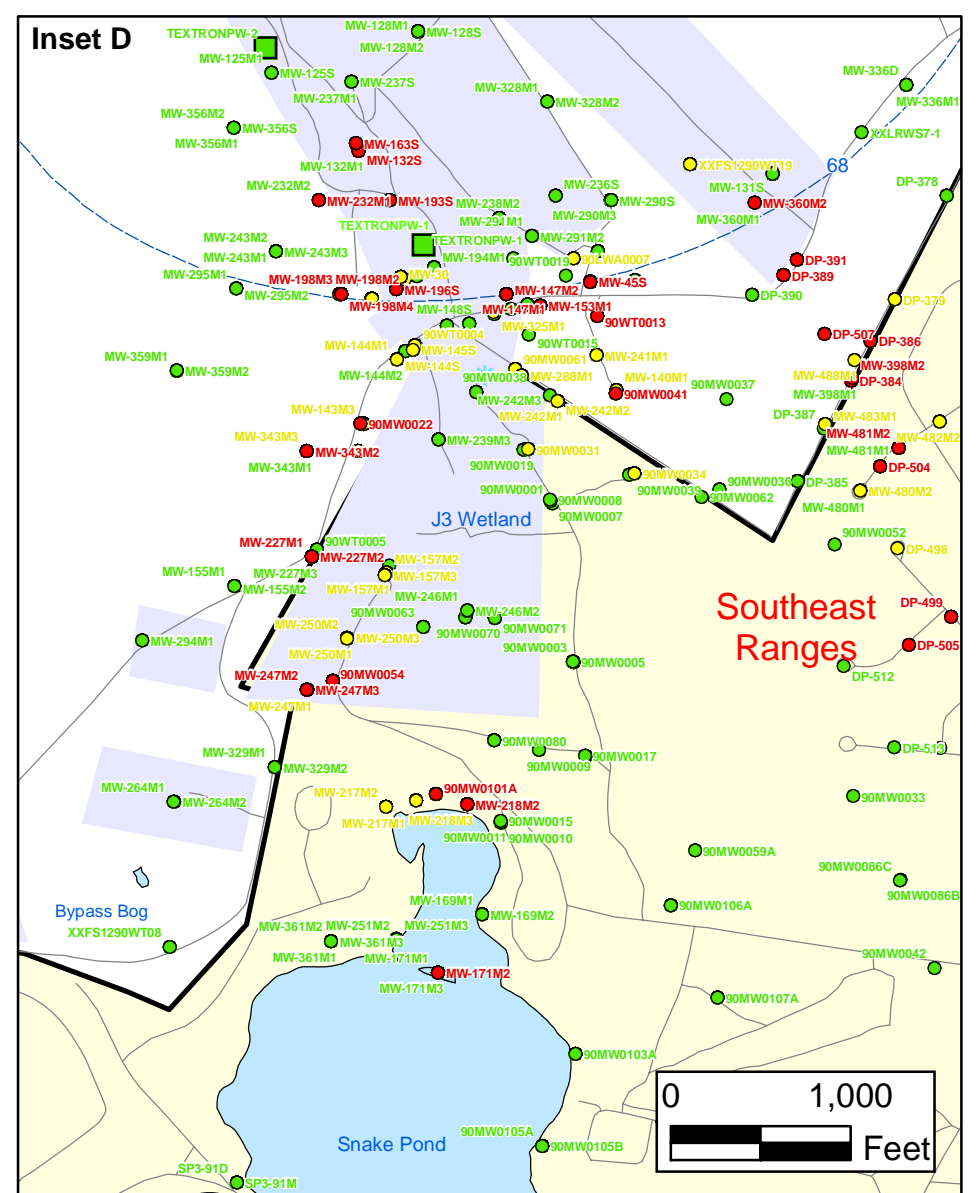
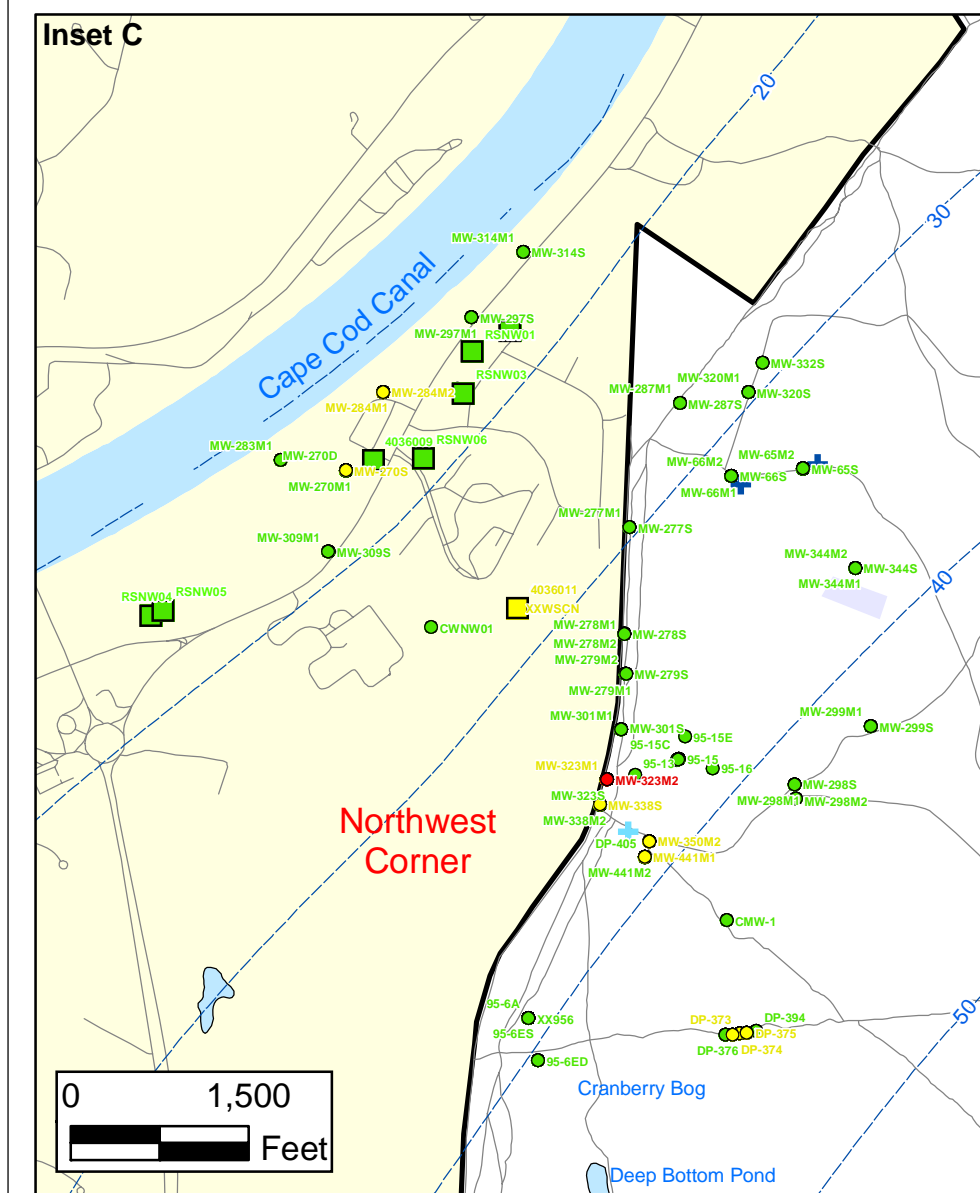
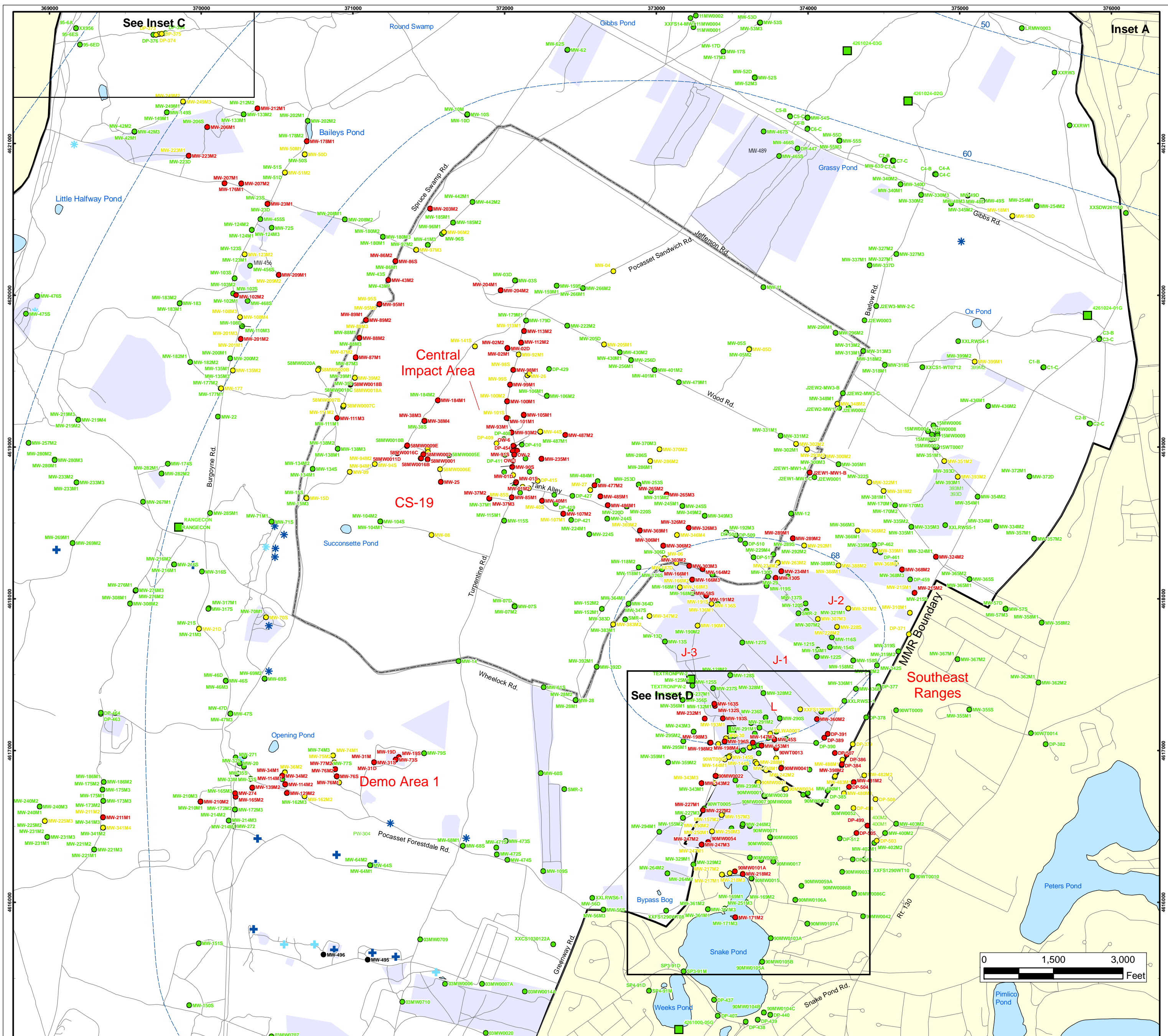


Explosives in Groundwater Compared to Maximum Contaminant Level/Health Advisories Validated Data as of 10/31/08



Explosives in Groundwater Compared to Maximum Contaminant Level/Health Advisories

Validated Data as of 10/31/08

- Validated Detection Greater than or Equal to Maximum Contaminant Level/Health Advisories
- Validated Detection Less than Maximum Contaminant Level/Health Advisories
- Validated Non-Detect
- Data Pending
- Military Range Areas
- + Current Gun Position
- * Current Mortar Position
- + Old Gun Position
- * Old Mortar Position
- Validated Non-Detect Water Supply Well
- Validated Detection Less than Maximum Contaminant Level/Health Advisories Water Supply Well
- Water Table Contour (Feet NGVD), AMEC, September 2003

Note: Map dot colors are representative of the highest historical concentration at each well and not the current concentration level. Historical data presented on this figure range from November 1996 through 2007.

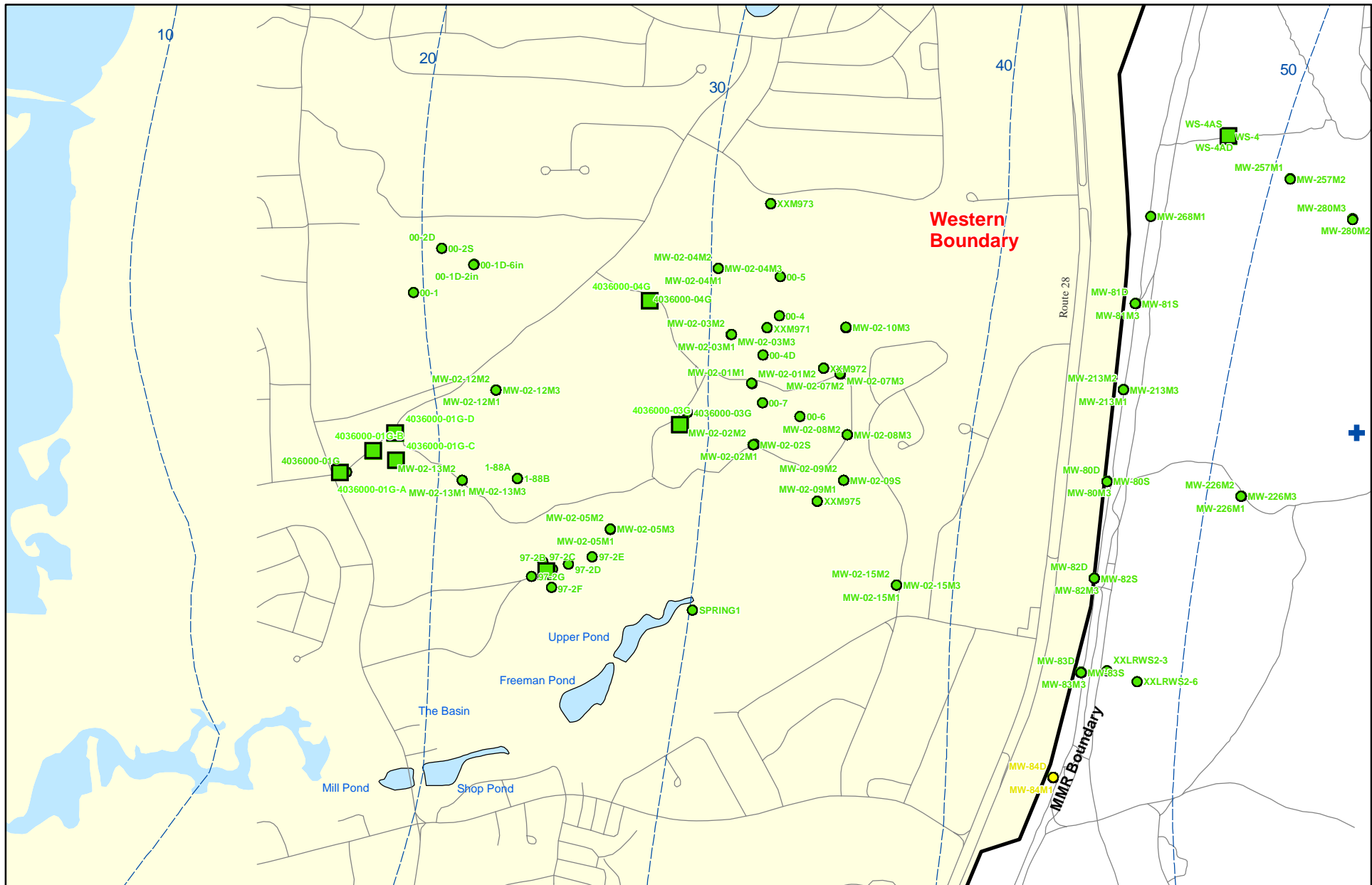
**Impact Area
Groundwater Study Program**

ECC-MMR
Cape Cod, Massachusetts

Sources & Notes
Base map data from US Geological Survey
7 1/2 minute Topographic Maps
Source: Office of Geographic and
Environmental Information (MassGIS)
Environmental Information
Executive Office of Environmental Affairs

FIGURE
1

Inset Map



Sources & Notes:
 Base map data from US Geological Survey
 7 1/2 minute Topographic maps
 Source: Office of Geographic and
 Environmental Information (MassGIS)
 Commonwealth of Massachusetts
 Executive Office of Environmental Affairs

- Validated Detection Less than Maximum Contaminant Level/Health Advisories
- Validated Non-Detect
- + Current Gun Position
- Validated Non-Detect Water Supply Well
- Proposed Water Supply Well
- Water Table Contour (Feet NGVD)
AMEC, September 2003

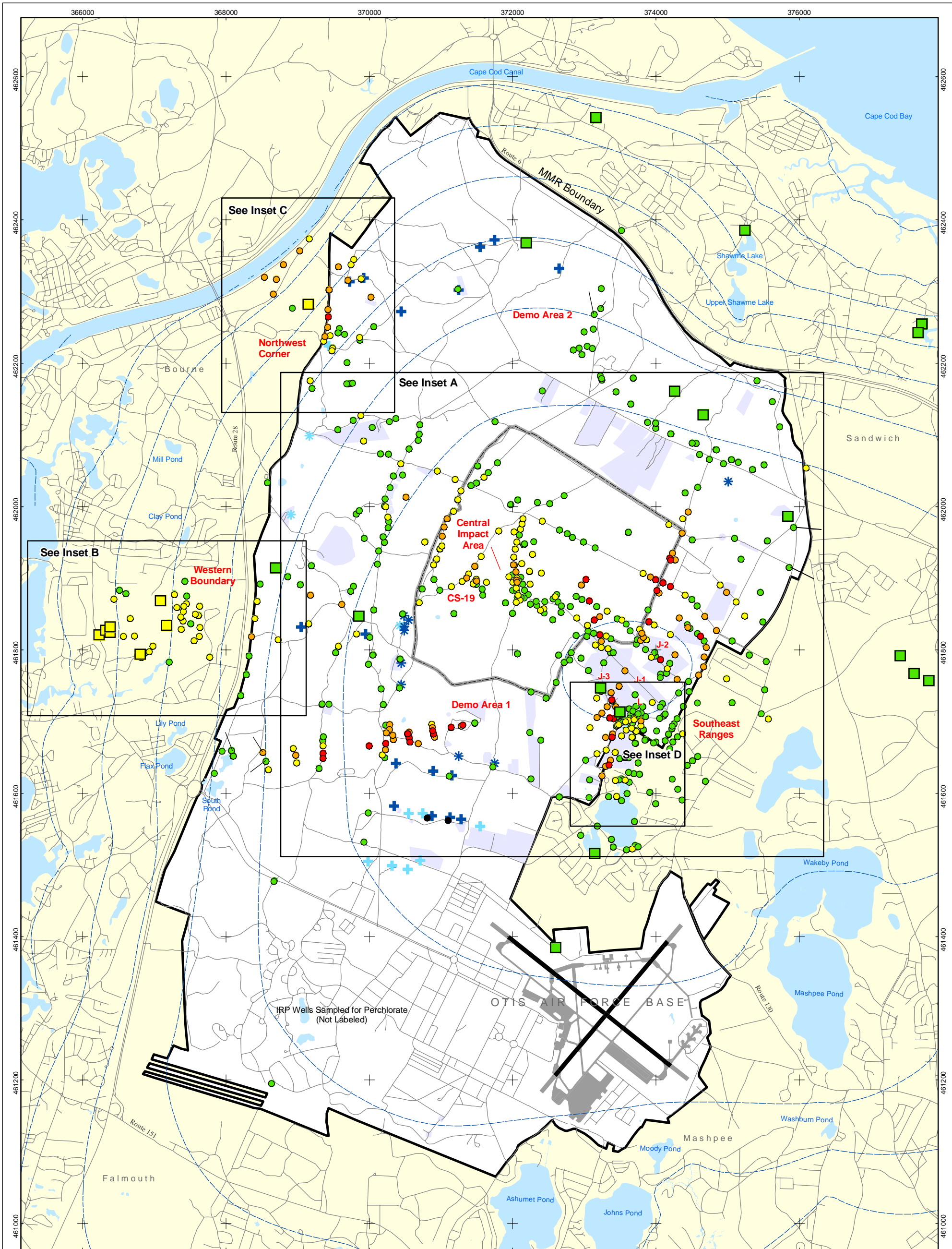
Explosives in Groundwater Compared to Maximum Contaminant Level/Health Advisories
Validated Data as of 10/31/08



Note: Map dot colors are representative of the highest historical concentration at each well and not the current concentration level.
 Historical data presented on this figure range from November 1996 through 2007.

ECC-MMR
 Cape Cod, Massachusetts

FIGURE
Inset Map B 1



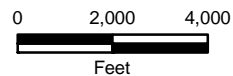
- Validated Detection Greater than or Equal to 24 ppb
- Validated Detection Greater than or Equal to 2 and Less than 24 ppb
- Validated Detection Greater than Non-Detect and Less than 2 ppb
- Validated Non-Detect

Note: Map dot colors are representative of the highest historical concentration at each well and not the current concentration level. Historical data presented on this figure range from November 1996 through 2007.

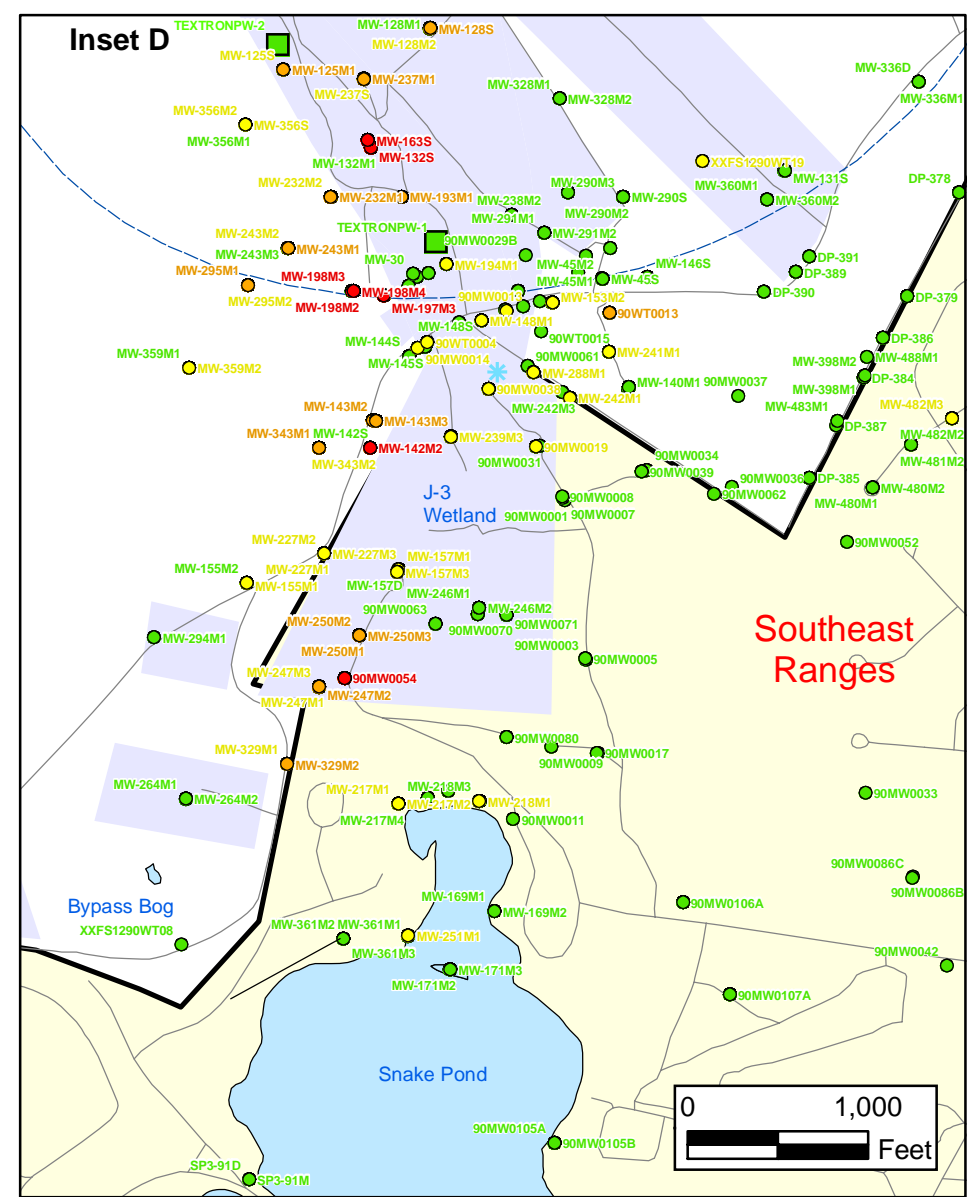
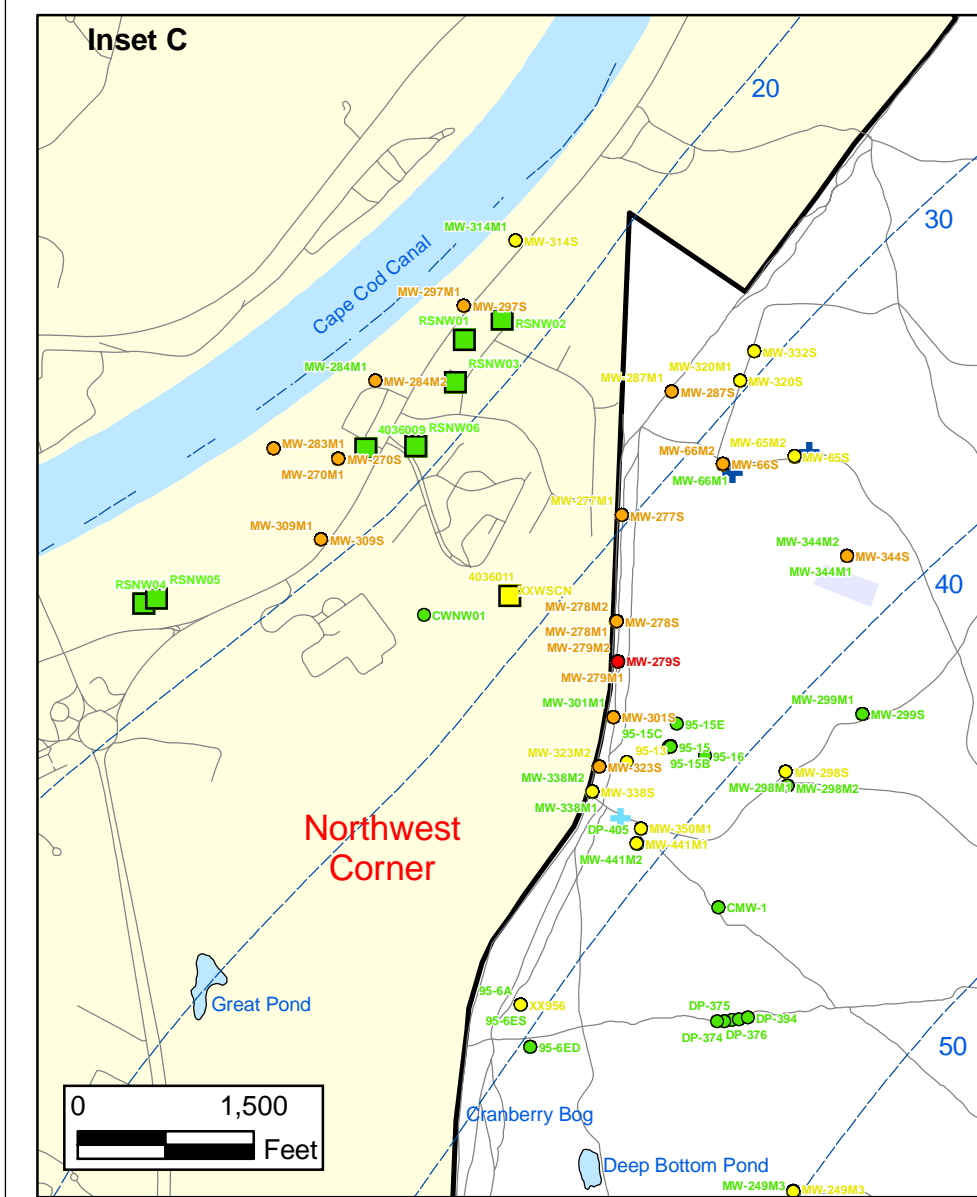
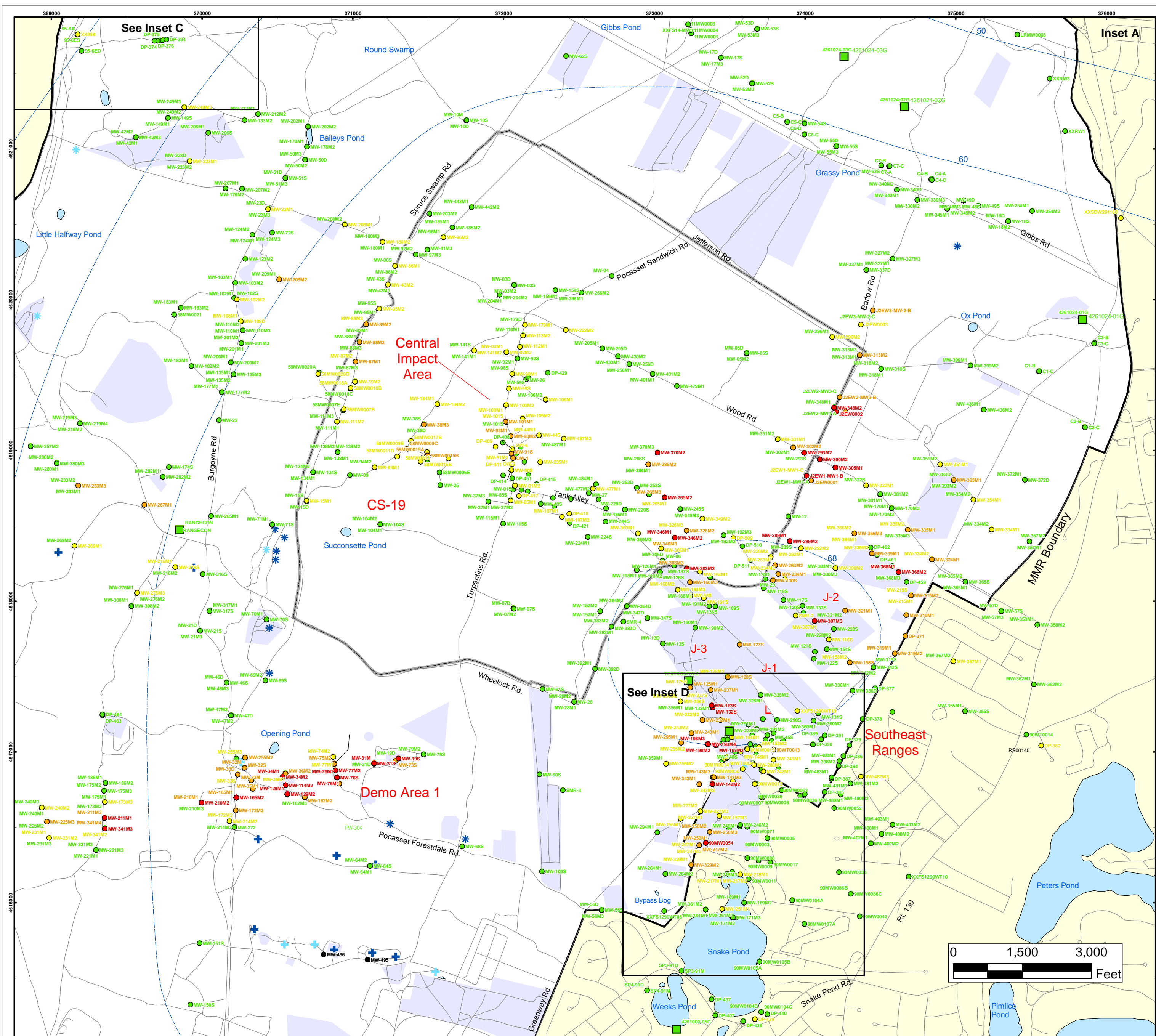
- Data Pending
- Proposed Monitoring Well
- ⊕ Current Gun Position
- ⊕ Current Mortar Position
- ⊕ Old Gun Position
- ⊕ Old Mortar Position

- Validated Non-Detect Water Supply Well
- Validated Detection Less than 2 ppb Water Supply Well
- Proposed Water Supply Well

- - - Water Table Contour (Feet NGVD) AMEC, September 2003
- Military Range Areas



Sources & Notes
 Base map data from US Geological Survey
 7 1/2 minute Topographic Maps
 Source: Office of Geographic and Environmental Information (MassGIS)
 Commonwealth of Massachusetts
 Executive Office of Environmental Affairs



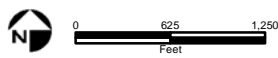
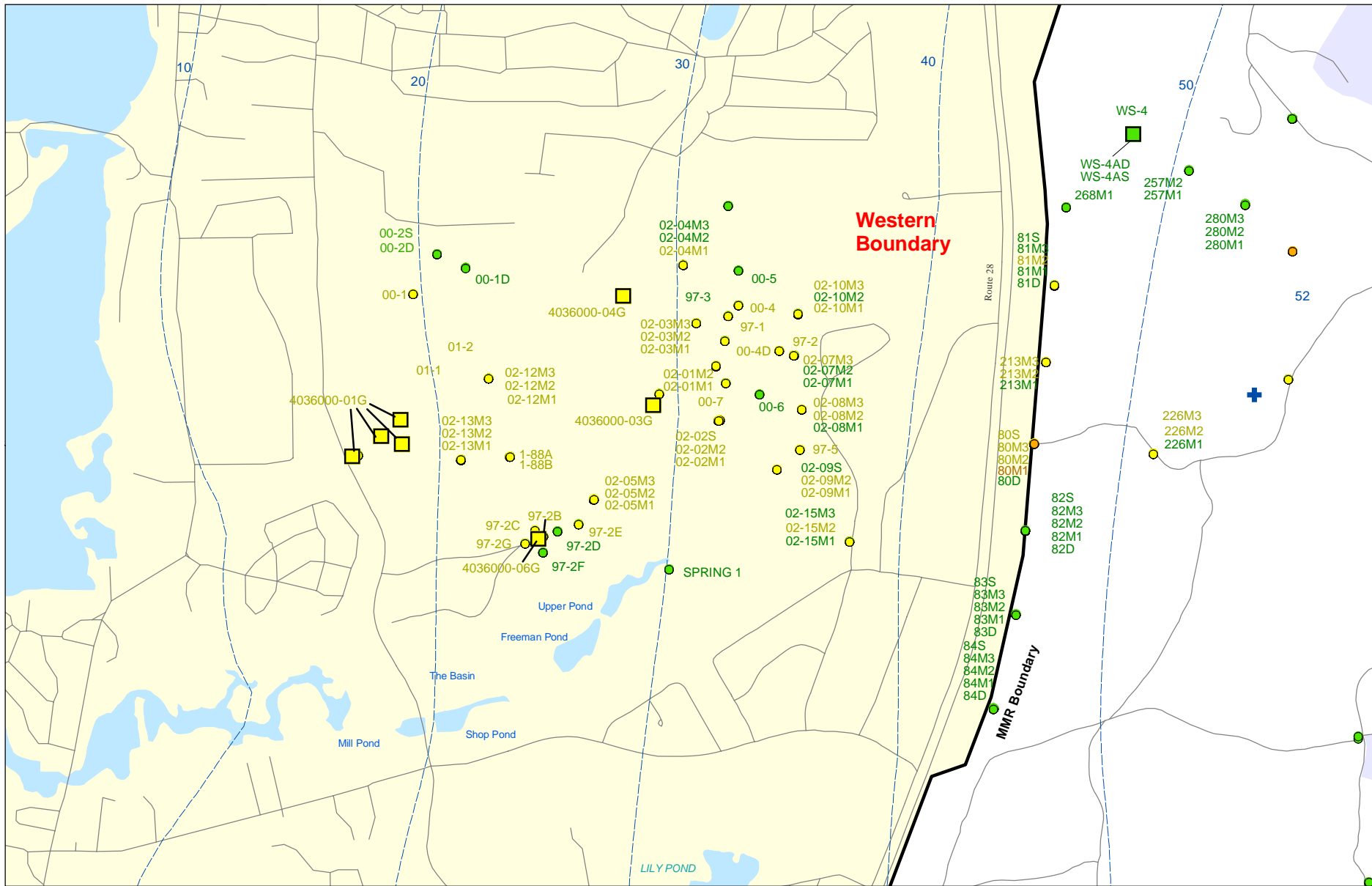
Perchlorate in Groundwater Compared to a 2 PPB Concentration Validated Data as of 10/31/08

- Validated Detection Greater than or Equal to 24 ppb
- Validated Detection Greater than or Equal to 2 and Less than 24 ppb
- Validated Detection Less than 2 ppb
- Validated Non-Detect
- Data Pending
- Military Range Areas
- + Current Gun Position
- * Current Mortar Position
- + Old Gun Position
- * Old Mortar Position
- Validated Non-Detect Water Supply Well
- Validated Detection Less Than 2 ppb Water Supply Well
- Water Table Contour (Feet NGVD), AMEC, September 2003

Note: Map dot colors are representative of the highest historical concentration at each well and not the current concentration level. Historical data presented on this figure range from November 1996 through 2007.

ECC-MMR
Cape Cod, Massachusetts

FIGURE
8



Sources & Notes:
 Base map data from US Geological Survey
 7 1/2 minute Topographic maps.
 Source: Office of Geographic and
 Environmental Information (MassGIS)
 Commonwealth of Massachusetts
 Executive Office of Environmental Affairs

- Validated Detection Greater than or Equal to 2 and Less than 24 ppb
- Validated Detection Greater than Non-Detect and Less than 2 ppb
- Validated Non-Detect

Note: Map dot colors are representative of the highest historical concentration at each well and not the current concentration level.
 Historical data presented on this figure range from November 1996 through 2007.

- Validated Detection Less than 2 ppb Water Supply Well
- Validated Non-Detect Water Supply Well
- + Current Gun Position
- Water Table Contour (Feet NGVD)
AMEC, September 2003

Perchlorate in Groundwater Compared to a 2 ppb Concentration Validated Data as of 10/31/08



ECC-MMR
 Cape Cod, Massachusetts

FIGURE
 Inset Map B **8**

Activity ID	Activity Description	Orig Dur	Rem Dur	Anticipated /Actual Start	Anticipated /Actual Finish	FY08					FY09					FY10					FY11					FY12																													
						F	M	A	M	J	J	A	S	O	N	D	J	F	M	A	M	J	J	A	S	O	N	D	J	F	M	A	M	J	J	A	S	O	N	D	J	F	M	A	M	J	J	A	S						
Demolition Area 1																															General Notes: A. 55-65 day - Agency Review/Approve Activity Includes: 15-25 days: Agency Review/Comment 15 days: Prepare/Submit RCL 5 days: Agency Review RCL 5 days: Agency Conduct CRM 10 days: Prepare/Submit MOR 5 days: Agency Approve MOR																								
Demolition Area 1 Soil																																																							
DM1782	Prepare Demo 1 Supplemental Post Screening Rpt	345	35	06SEP06A	21MAR08	Prepare Demo 1 Supplemental Post Screening Rpt																																																	
00145	Agency Review/Approve Draft Demo 1 RRA Soil COWR	599*	68*	22DEC05A	07MAY08	Agency Review/Approve Draft Demo 1 RRA Soil COWR																																																	
DM0920	Prepare/Submit Final Demo 1 RRA Soil COWR	20	20	08MAY08	05JUN08	Prepare/Submit Final Demo 1 RRA Soil COWR																																																	
Demolition Area 1 Groundwater																																																							
CL0100	Agency Review/Approve Draft Demo 1 ESPM Plan	251*	11*	20FEB07A	15FEB08	Agency Review/Approve Draft Demo 1 ESPM Plan																																																	
CL0130	Prepare/Submit Final Demo 1 ESPM Plan	20	20	19FEB08	17MAR08	Prepare/Submit Final Demo 1 ESPM Plan																																																	
CL0140	Prepare/Submit Dr Demo1 GW Remedial Const Rpt	40	0	26JUN07A	05NOV07A																																																		
CL0220	Agency Revw/Appr Dr Demo1 GW Remedial Const Rpt	104*	45*	06NOV07A	04APR08	Agency Revw/Appr Dr Demo1 GW Remedial Const Rpt																																																	
CL0240	Prep/Sub Final Demo1 GW Remedial Const Rpt	20	20	07APR08	02MAY08	Prep/Sub Final Demo1 GW Remedial Const Rpt																																																	
CL0245	EPA Approve Demo1 GW Remedial Construction Rpt	15	15	05MAY08	23MAY08	EPA Approve Demo1 GW Remedial Construction Rpt																																																	
Demolition Area 1																																																							
DL0000	Prepare/Submit Draft Demo 1 DD Amendment	45	45	31MAR08	02JUN08	Prepare/Submit Draft Demo 1 DD Amendment																																																	
DL0080	Agency Review/Approve Draft Demo1 DD Amendment	55*	55*	03JUN08	19AUG08	Agency Review/Approve Draft Demo1 DD Amendment																																																	
DL0100	Prepare/Submit Final Demo 1 DD Amendment	20	20	20AUG08	17SEP08	Prepare/Submit Final Demo 1 DD Amendment																																																	
DL0110	EPA Issue Demo 1 DD Amendment	15	15	18SEP08	08OCT08	EPA Issue Demo 1 DD Amendment																																																	
J-1 Range																																																							
CL0360	Prepare/Submit Draft J-1 South RRA GW COWR	66	21	15OCT07A	03MAR08	Prepare/Submit Draft J-1 South RRA GW COWR																																																	
CL0440	Agency Review/Approve Draft J-1 Sth RRA GW COWR	55*	55*	04MAR08	19MAY08	Agency Review/Approve Draft J-1 Sth RRA GW COWR																																																	
CL0460	Prepare/Submit Final J-1 South RRA GW COWR	20	20	20MAY08	17JUN08	Prepare/Submit Final J-1 South RRA GW COWR																																																	
U1100	Scoping MtgDraft J-1 Sth/Nth UXO SourceAssess WP	1	1	09JUN08*	09JUN08	Scoping MtgDraft J-1 Sth/Nth UXO SourceAssess WP																																																	
U1105	Prp/Sbmt Draft J-1 Sth/Nth UXO SourceAssess WP	30	30	10JUN08	22JUL08	Prp/Sbmt Draft J-1 Sth/Nth UXO SourceAssess WP																																																	
U1110	Agency Rev/Appr Drft J-1Sth/Nth UXO Source As WP	65	65	23JUL08	23OCT08	Agency Rev/Appr Drft J-1Sth/Nth UXO Source As WP																																																	
U1120	Prep/Sbmt Final J-1 Sth/Nth UXO SourceAssess WP	20	20	24OCT08	21NOV08	Prep/Sbmt Final J-1 Sth/Nth UXO SourceAssess WP																																																	
U1130	Incorporate J-1 Sth/Nth UXO Source Assessment WP	60	60	22NOV08	23JAN09	Incorporate J-1 Sth/Nth UXO Source Assessment WP																																																	
10066	Prepare/Submit Draft J-1 South RI/FS Rpt	373	235	16JUL07A	23JAN09	Prepare/Submit Draft J-1 South RI/FS Rpt																																																	
10071	Agency Review/Approve Drft J-1 South RI/FS	65*	65*	26JAN09	27APR09	Agency Review/Approve Drft J-1 South RI/FS																																																	
10088	Prepare/Submit Final J-1 South RI/FS Rpt	20	20	28APR09	26MAY09	Prepare/Submit Final J-1 South RI/FS Rpt																																																	

Start Date 01JAN06
Finish Date 20DEC69
Data Date 01FEB08
Run Date 04FEB08 14:02

U234
RCS - Revised Format
as of 01FEB08

Sheet 1 of 12

Activity ID	Activity Description	Orig Dur	Rem Dur	Anticipated /Actual Start	Anticipated /Actual Finish	FY08				FY09				FY10				FY11				FY12									
						F	M	A	M	J	J	A	S	O	N	D	J	F	M	A	M	J	J	A	S	O	N	D	J	F	M
00325	Prepare/Submit Draft J-2 UXO/Source RI/FS Rpt	179	179	20JUN08	09MAR09																										
00329	Agency Rvw/Approve Draft J-2 UXO/Source RI/FS Rt	65*	65*	10MAR09	09JUN09																										
J20038	Prepare/Submit Final J-2 UXO/Source RI/FS Rpt	20	20	10JUN09	08JUL09																										
J-2 Range Groundwater																															
00353	Agency Review/Approve J-2 GW RI/FS Rpt	267*	5*	18JAN07A	07FEB08																										
0698	Prepare/Submit Interim Final J-2 GW RI/FS Rpt	20	20	08FEB08	07MAR08																										
00369	Construct/Startup J-2 Range GW Treatment System	254*	153*	06SEP07A	08SEP08																										
CL0580	Agency Review/Approve Draft J-2E SPM Plan	137*	0*	29JUN07A	16JAN08A																										
CL0600	Prepare/Submit Final J-2E SPM Plan	20	10	17JAN08A	14FEB08																										
CL0605	Prep/Sub Draft J-2 Remedial Construction Rpt	60	60	14JUL08	06OCT08																										
CL0615	Agency Revw/Appr Draft J-2 Remedial Const Rpt	55	55	07OCT08	26DEC08																										
CL0625	Prepare/Submit Final J-2 Remedial Const Rpt	20	20	29DEC08	26JAN09																										
CL0635	EPA Approve Final J-2 Remedial Construction Rpt	15	15	27JAN09	17FEB09																										
J-2 Range																															
CL1200	Prepare/Submit Draft J-2 RSP	10	10	09JUL09	22JUL09																										
CL1280	Agency Review/Approve Draft J-2 RSP	50*	50*	23JUL09	01OCT09																										
CL1300	Prepare/Submit Final J-2 RSP	10	10	02OCT09	16OCT09																										
CL1305	Formal Public Comment J-2 RSP	30	30	17OCT09	16NOV09																										
SL0300	Prepare/Submit Draft J-2 DD	45	45	17NOV09	21JAN10																										
SL0310	Agency Review/Approve Draft J-2 DD	65*	65*	22JAN10	23APR10																										
SL0330	Prepare/Submit Final J-2 DD	20	20	26APR10	21MAY10																										
SL0340	EPA Issue J-2 DD	15	15	24MAY10	14JUN10																										
J-3 Range																															
J-3 Range Soil																															
U1300	Scoping Mtg Draft J-3 UXO Source Assess WP	1	1	25APR08*	25APR08																										
U1305	Prepare/Submit Draft J-3 UXO Source Assess WP	30	30	28APR08	09JUN08																										
U1310	Agency Review/Appr Draft J-3 UXO SourceAssess.WP	65	65	10JUN08	10SEP08																										
U1320	Prepare/Submit Final J-3 UXO Source Assess WP	20	20	11SEP08	08OCT08																										
U1330	Incorporate J-3 UXO Source Assessment Work Plan	60	60	09OCT08	10DEC08																										
U1340	Prepare/Submit Draft J-3 UXO/Source RI	60	60	09OCT08	10DEC08																										
U1350	Agency Review/Appr Draft J-3 UXO/Source RI	65	65	11DEC08	16MAR09																										
U1360	Prepare/Submit Final J-3 UXO/Source RI	20	20	17MAR09	13APR09																										

Activity ID	Activity Description	Orig Dur	Rem Dur	Anticipated /Actual Start	Anticipated /Actual Finish	FY08					FY09					FY10					FY11					FY12																	
						F	M	A	M	J	J	A	S	O	N	D	J	F	M	A	M	J	J	A	S	O	N	D	J	F	M	A	M	J	J	A	S	O	N	D	J	F	M
Wide Area Source Assessment																																											
02806	Agency Review/Approve Draft WASA Workplan	711*	68*	13JUL05A	07MAY08	* Agency Review/Approve Draft WASA Workplan																																					
TC00815	Prepare/Submit Final WASA Workplan	20	20	08MAY08	05JUN08	* Prepare/Submit Final WASA Workplan																																					
WA0002	Conduct WASA Investigation	85	85	06JUN08	06OCT08	* Conduct WASA Investigation																																					
WA0004	Prepare/Submit Draft WASA Investigation Rpt	135	135	07OCT08	21APR09	* Prepare/Submit Draft WASA Investigation Rpt																																					
WA0006	Agency Review/Approve Draft WASA Investigation	65	65	22APR09	23JUL09	* Agency Review/Approve Draft WASA Investigation																																					
WA0008	Prepare Final WASA Investigation Report	20	20	24JUL09	20AUG09	* Prepare Final WASA Investigation Report																																					
WA0000	Prepare/Submit Draft WASA Soil RRA Plan	60	60	07OCT08	05JAN09	* Prepare/Submit Draft WASA Soil RRA Plan																																					
WA0010	Agency Review/Approve Draft WASA Soil RRA Plan	55	55	06JAN09	24MAR09	* Agency Review/Approve Draft WASA Soil RRA Plan																																					
WA0020	Informal Public Comment WASA Soil RRA Plan	15	15	27JAN09	10FEB09	* Informal Public Comment WASA Soil RRA Plan																																					
WA0030	Prepare/Submit Final WASA Soil RRA Plan	20	20	25MAR09	21APR09	* Prepare/Submit Final WASA Soil RRA Plan																																					
WA0040	Conduct WASA Soil RRA	30	30	22APR09	03JUN09	* Conduct WASA Soil RRA																																					
WA0050	Prepare/Submit Draft WASA Soil COWR	60	60	04JUN09	27AUG09	* Prepare/Submit Draft WASA Soil COWR																																					
WA0060	Agency Review/Approve Draft WASA Soil COWR	55	55	28AUG09	17NOV09	* Agency Review/Approve Draft WASA Soil COWR																																					
WA0070	Prepare/Submit WASA Final Soil COWR	20	20	18NOV09	16DEC09	* Prepare/Submit WASA Final Soil COWR																																					
WA0080	Prepare/Submit Draft WASA NFA DD	45	45	17DEC09	22FEB10	* Prepare/Submit Draft WASA NFA DD																																					
WA0090	Agency Review/Approve Draft WASA NFA DD	65	65	23FEB10	24MAY10	* Agency Review/Approve Draft WASA NFA DD																																					
WA0110	Prepare/Submit Final WASA NFA DD	20	20	25MAY10	22JUN10	* Prepare/Submit Final WASA NFA DD																																					
WA0120	EPA Issue WASA NFA DD	15	15	23JUN10	14JUL10	* EPA Issue WASA NFA DD																																					