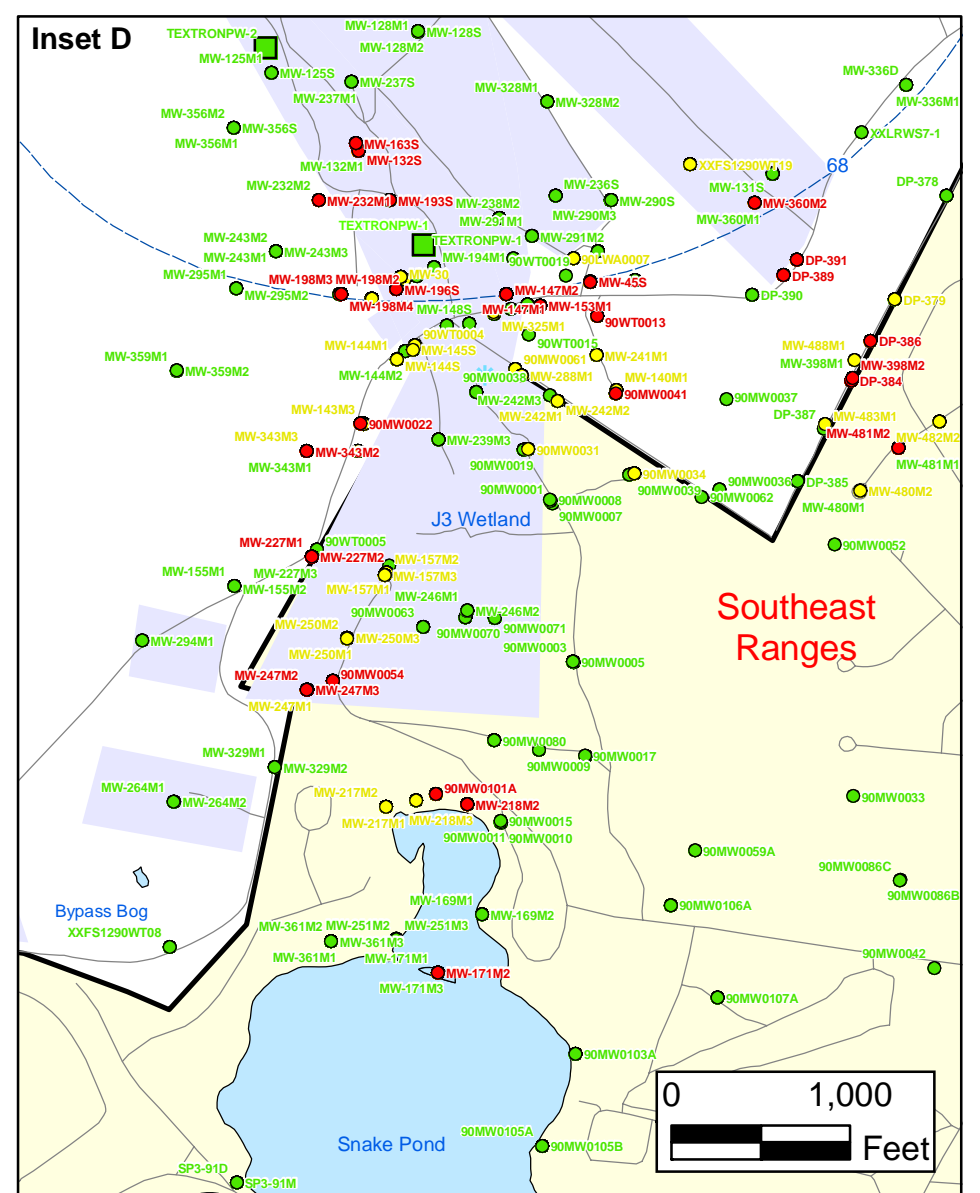
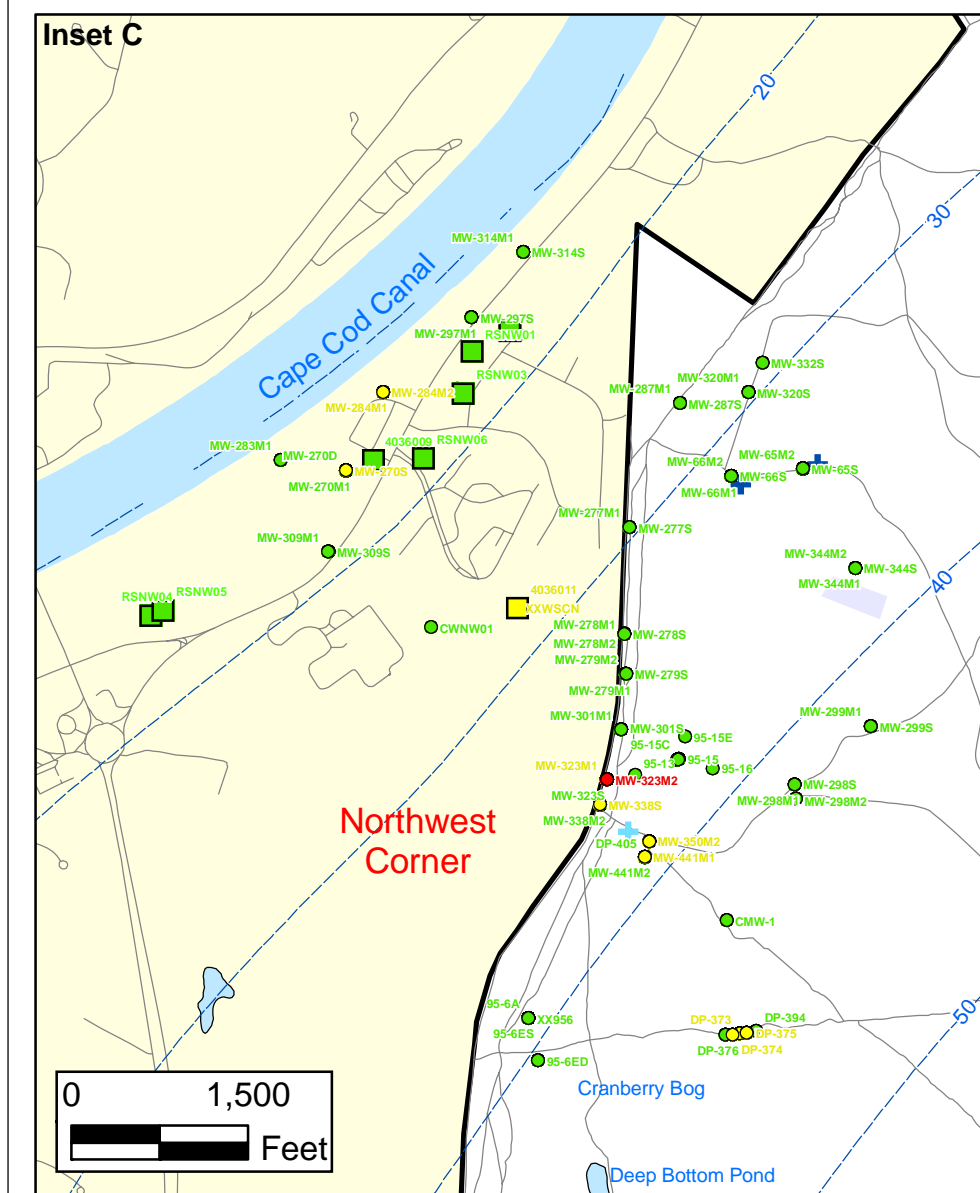
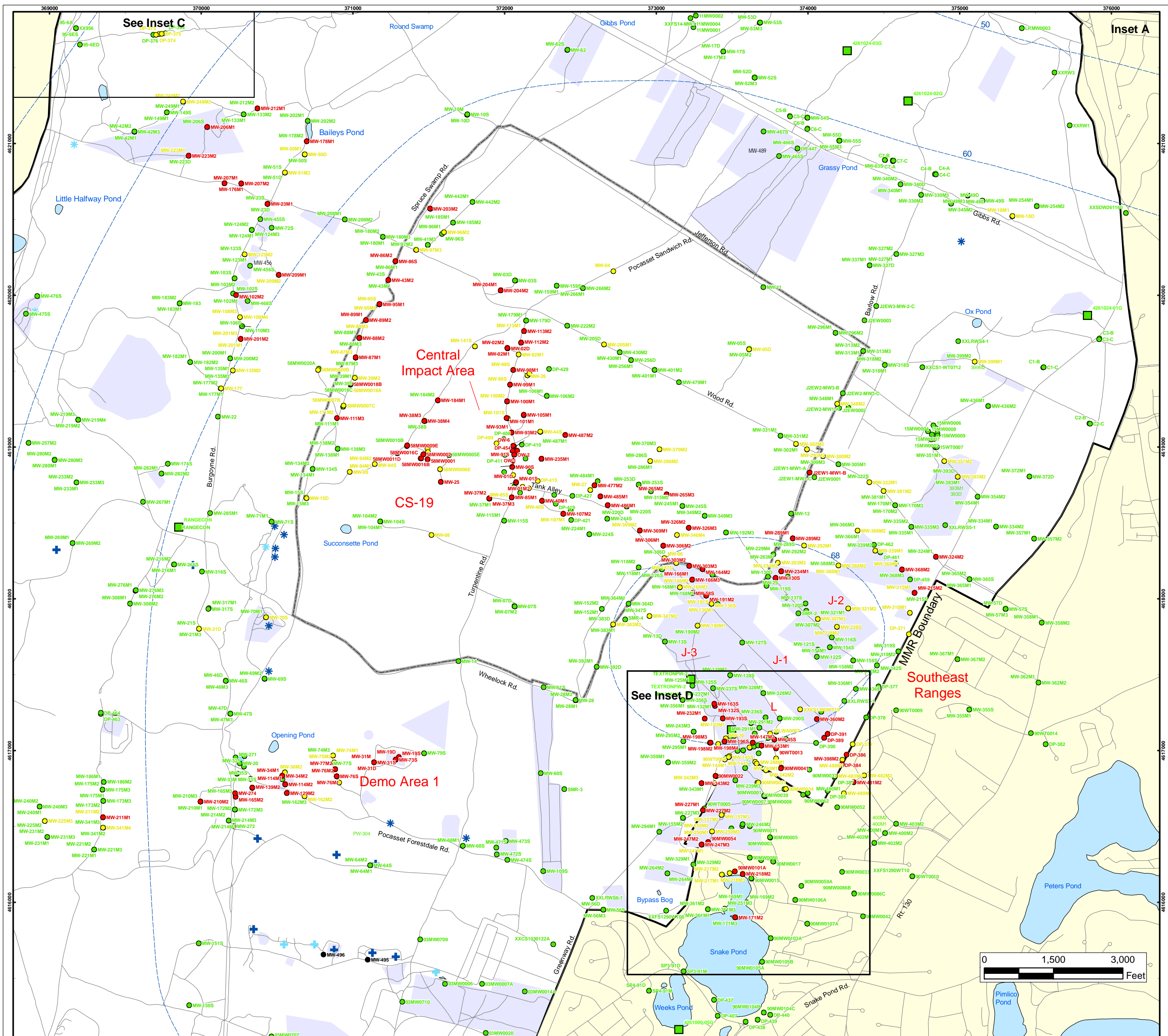


Explosives in Groundwater Compared to Maximum Contaminant Level/Health Advisories Validated Data as of 12/31/07

FIGURE 1



Explosives in Groundwater Compared to Maximum Contaminant Level/Health Advisories

Validated Data as of 12/31/07

- Validated Detection Greater than or Equal to Maximum Contaminant Level/Health Advisories
- Validated Detection Less than Maximum Contaminant Level/Health Advisories
- Validated Non-Detect
- Data Pending
- Military Range Areas
- + Current Gun Position
- * Current Mortar Position
- + Old Gun Position
- * Old Mortar Position
- Validated Non-Detect Water Supply Well
- Validated Detection Less than Maximum Contaminant Level/Health Advisories Water Supply Well
- Water Table Contour (Feet NGVD), AMEC, September 2003

Note: Map dot colors are representative of the highest historical concentration at each well and not the current concentration level. Historical data presented on this figure range from November 1996 through 2007.

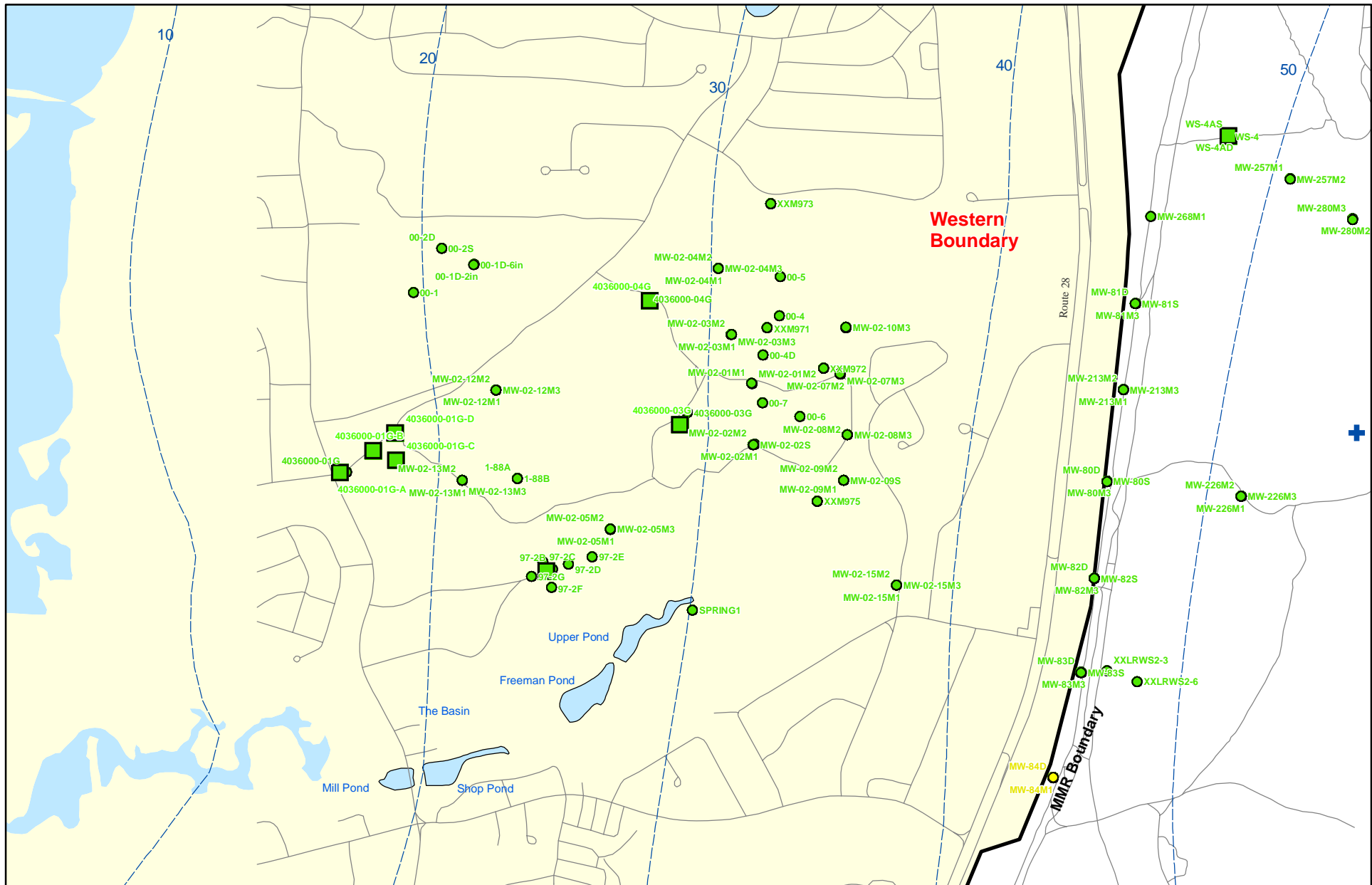
**Impact Area
Groundwater Study Program**

ECC-MMR
Cape Cod, Massachusetts

Sources & Notes
Base map data from US Geological Survey
7 1/2 minute Topographic Maps
Source: Office of Geographic and
Environmental Information (MassGIS)
Commonwealth of Massachusetts
Executive Office of Environmental Affairs

FIGURE
1

Inset Map

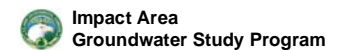


Sources & Notes:
 Base map data from US Geological Survey
 7 1/2 minute Topographic maps.
 Source: Office of Geographic and
 Environmental Information (MassGIS)
 Commonwealth of Massachusetts
 Executive Office of Environmental Affairs

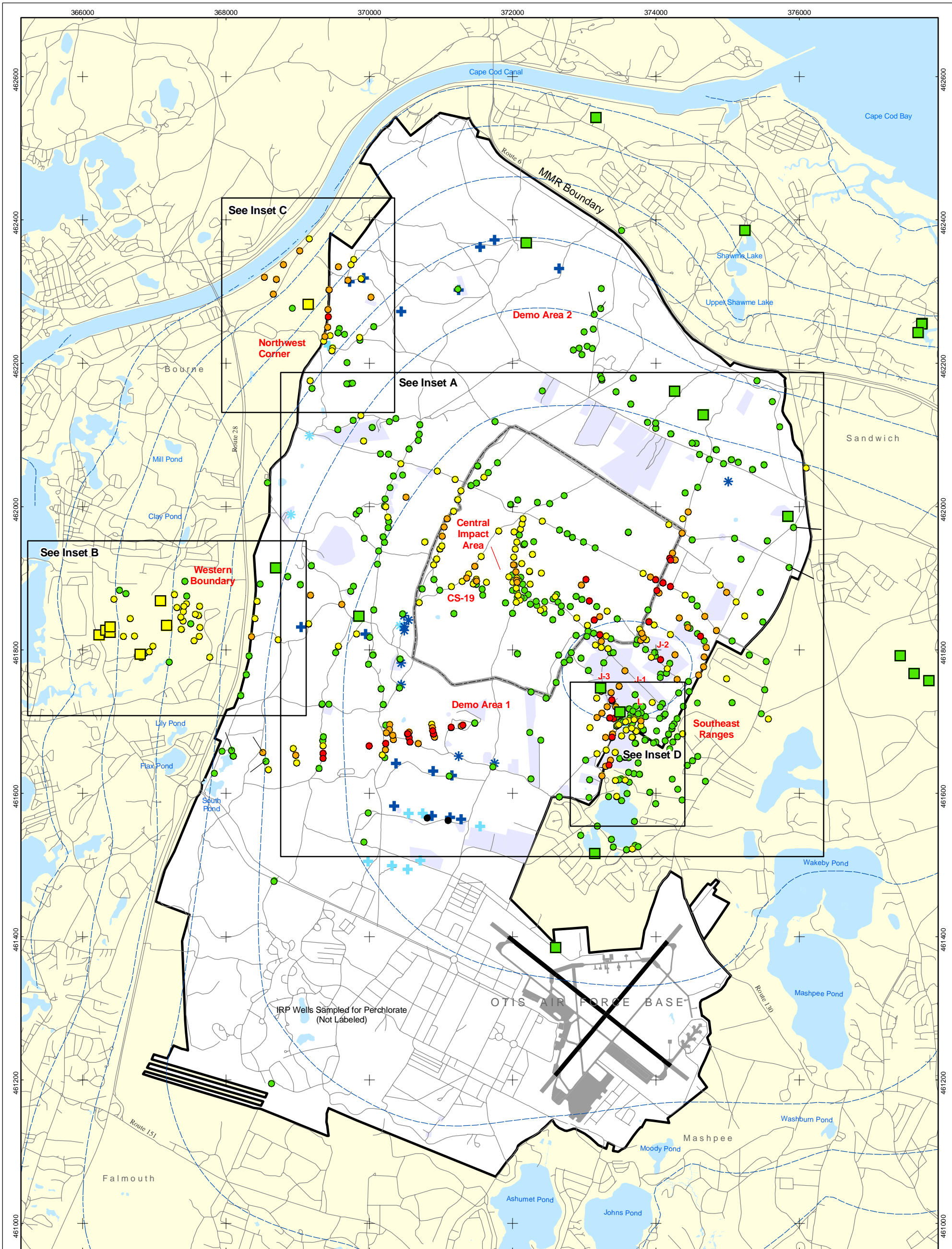
- Validated Detection Less than Maximum Contaminant Level/Health Advisories
- Validated Non-Detect
- Validated Non-Detect Water Supply Well
- Proposed Water Supply Well
- Water Table Contour (Feet NGVD)
AMEC, September 2003
- + Current Gun Position

Note: Map dot colors are representative of the highest historical concentration at each well and not the current concentration level.
 Historical data presented on this figure range from November 1996 through 2007.

Explosives in Groundwater Compared to Maximum Contaminant Level/Health Advisories
Validated Data as of 12/31/07



ECC-MMR
 Cape Cod, Massachusetts




- Validated Detection Greater than or Equal to 24 ppb
- Validated Detection Greater than or Equal to 2 and Less than 24 ppb
- Validated Detection Greater than Non-Detect and Less than 2 ppb
- Validated Non-Detect

- Data Pending
- Proposed Monitoring Well
- ⊕ Current Gun Position
- ⊛ Current Mortar Position
- ⊕ Old Gun Position
- ⊛ Old Mortar Position

- Validated Non-Detect Water Supply Well
- Validated Detection Less than 2 ppb Water Supply Well
- Proposed Water Supply Well
- Water Table Contour (Feet NGVD) AMEC, September 2003
- Military Range Areas

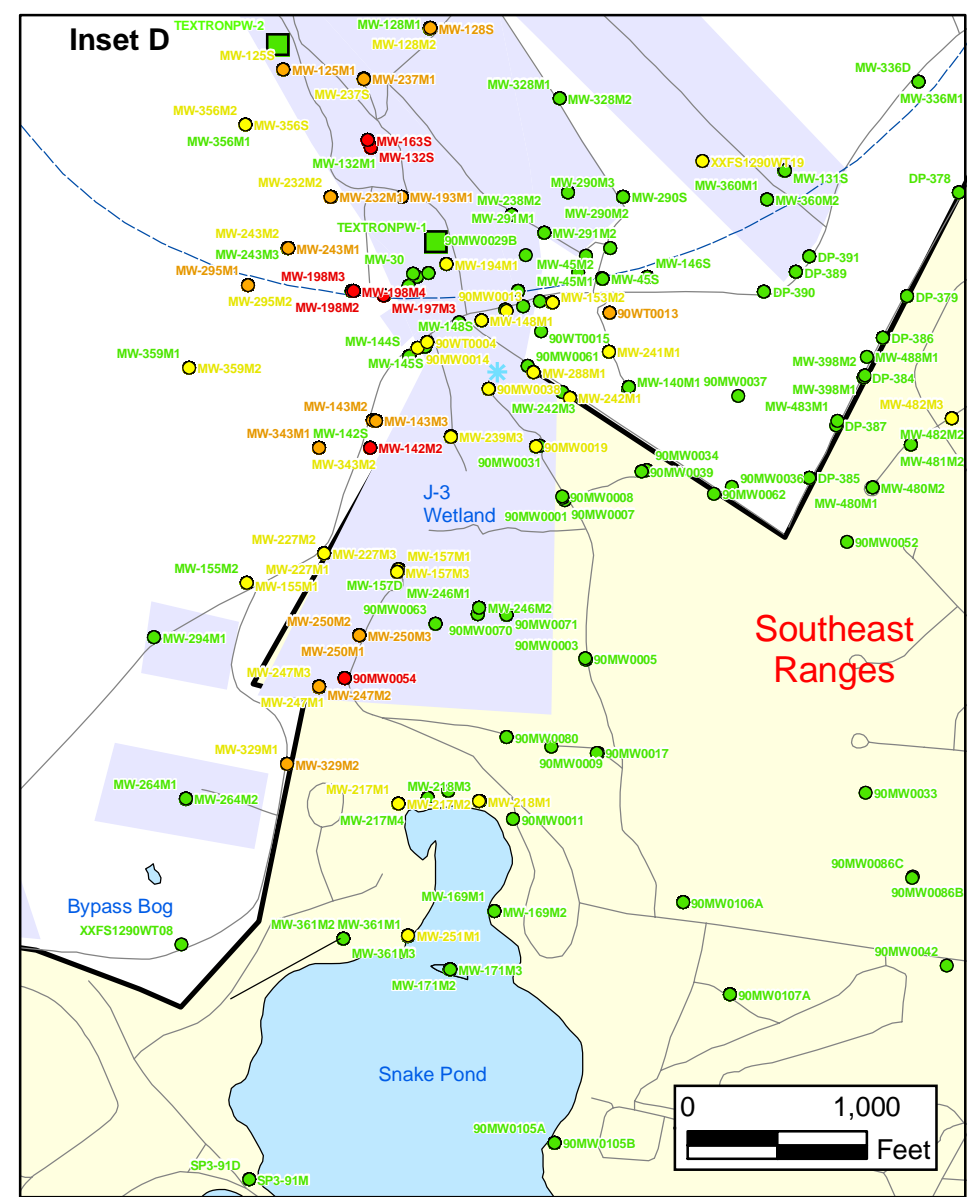
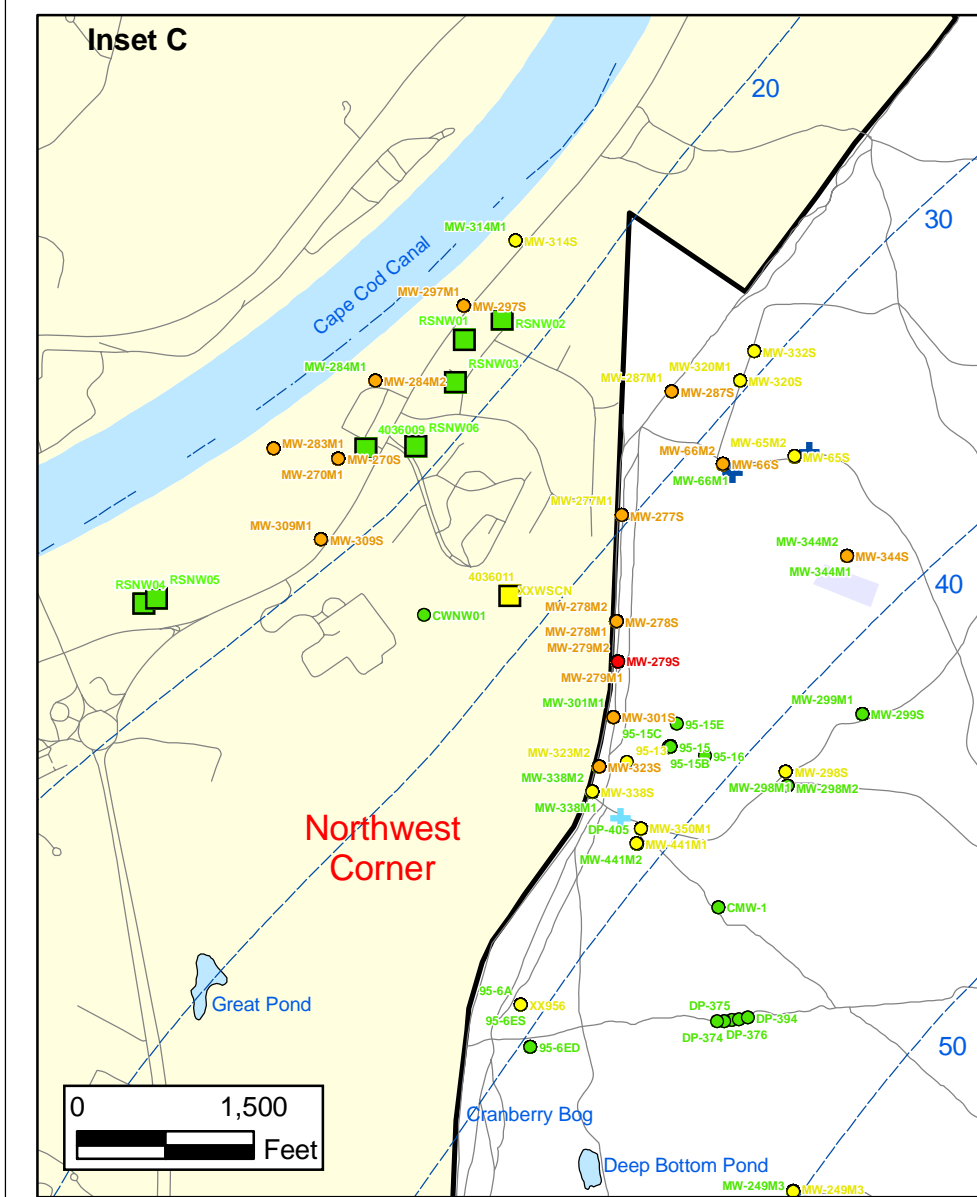
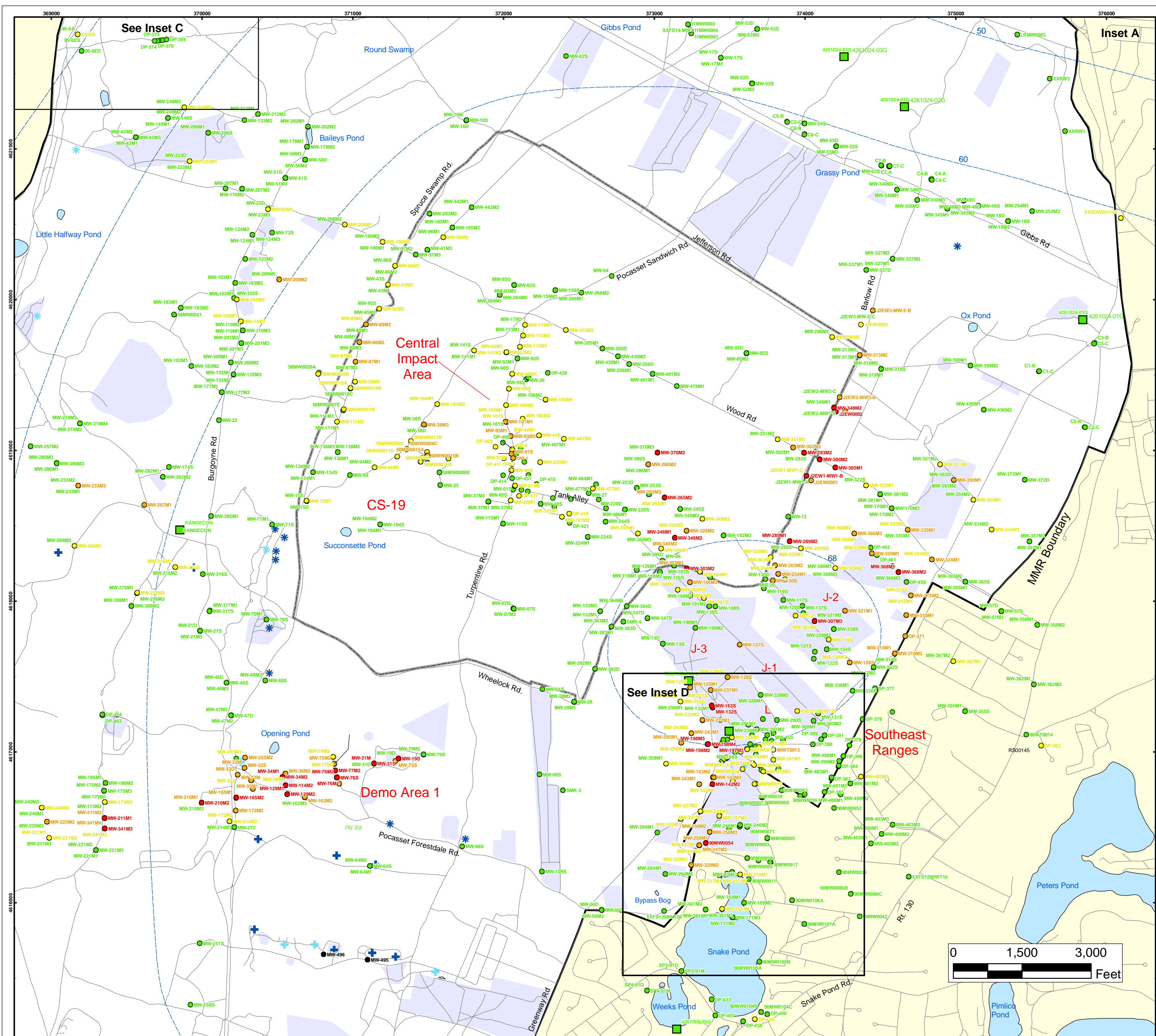
Note: Map dot colors are representative of the highest historical concentration at each well and not the current concentration level. Historical data presented on this figure range from November 1996 through 2007.



0 2,000 4,000
Feet

Sources & Notes
Base map data from US Geological Survey
7 1/2 minute Topographic Maps.
Source: Office of Geographic and
Environmental Information (MassGIS)
Commonwealth of Massachusetts
Executive Office of Environmental Affairs

**Perchlorate in Groundwater
Compared to a 2 ppb Concentration
Validated Data as of 12/31/07**



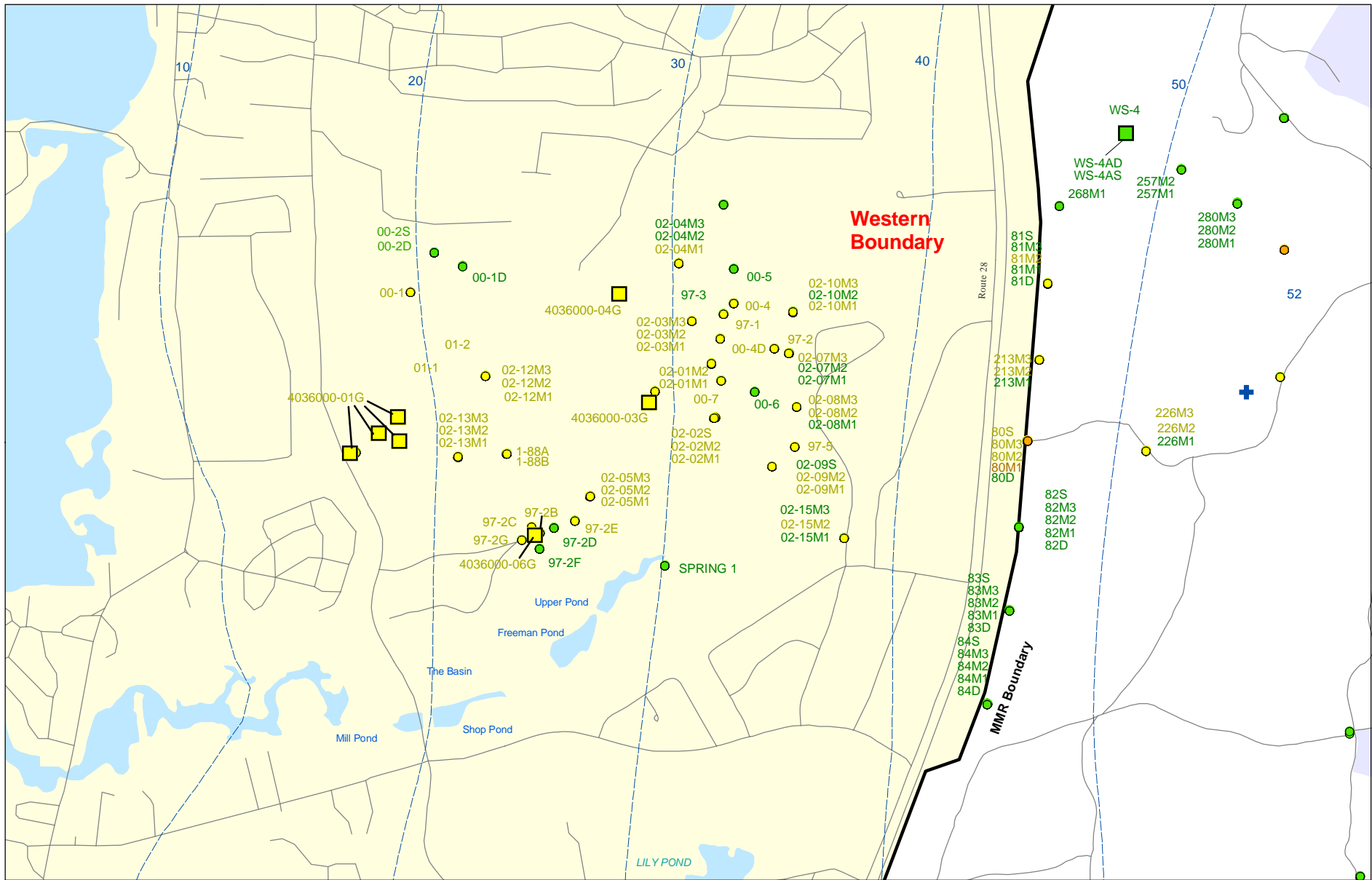
Perchlorate in Groundwater Compared to a 2 PPB Concentration Validated Data as of 12/31/07

- Validated Detection Greater than or Equal to 24 ppb
- Validated Detection Greater than or Equal to 2 and Less than 24 ppb
- Validated Detection Less than 2 ppb
- Validated Non-Detect
- Data Pending
- Military Range Areas
- + Current Gun Position
- * Current Mortar Position
- + Old Gun Position
- * Old Mortar Position
- Validated Non-Detect Water Supply Well
- Validated Detection Less Than 2 ppb Water Supply Well
- Water Table Contour (Feet NGVD), AMEC, September 2003

Note: Map dot colors are representative of the highest historical concentration at each well and not the current concentration level. Historical data presented on this figure range from November 1996 through 2007.

ECC-MMR
Cape Cod, Massachusetts

FIGURE 8
Inset Map



Sources & Notes:
 Base map data from US Geological Survey
 7 1/2 minute Topographic maps.
 Source: Office of Geographic and
 Environmental Information (MassGIS)
 Commonwealth of Massachusetts
 Executive Office of Environmental Affairs

- Validated Detection Greater than or Equal to 2 and Less than 24 ppb
- Validated Detection Greater than Non-Detect and Less than 2 ppb
- Validated Non-Detect

Note: Map dot colors are representative of the highest historical concentration at each well and not the current concentration level.
 Historical data presented on this figure range from November 1996 through 2007.

- Validated Detection Less than 2 ppb Water Supply Well
- Validated Non-Detect Water Supply Well
- + Current Gun Position
- Water Table Contour (Feet NGVD)
AMEC, September 2003

Perchlorate in Groundwater Compared to a 2 ppb Concentration Validated Data as of 11/28/07



Inset Map B **8**

Activity ID	Activity Description	Orig Dur	Rem Dur	Anticipated /Actual Start	Anticipated /Actual Finish	Var	FY08												FY09												FY10												FY11												FY12																							
							C	N	D	J	F	M	A	M	J	J	A	S	O	N	D	J	F	M	A	M	J	J	A	S	O	N	D	J	F	M	A	M	J	J	A	S	O	N	D	J	F	M	A	M	J	J	A	S	O	N	D	J	F	M	A	M	J	J	A	S												
CL0580	Agency Review/Approve Draft J-2 SPM Plan	105*	20*	29JUN07A	29NOV07	-49	Agency Review/Approve Draft J-2 SPM Plan																																																																							
CL0600	Prepare/Submit Final J-2 SPM Plan	20	20	30NOV07	28DEC07	-49	Prepare/Submit Final J-2 SPM Plan																																																																							
CL0605	Prep/Sub Draft J-2 Remedial Construction Rpt	60	60	14JUL08	06OCT08	-69	Prep/Sub Draft J-2 Remedial Construction Rpt																																																																							
CL0615	Agency Revw/Appr Draft J-2 Remedial Const Rpt	55	55	07OCT08	26DEC08	-69	Agency Revw/Appr Draft J-2 Remedial Const Rpt																																																																							
CL0625	Prepare/Submit Final J-2 Remedial Const Rpt	20	20	29DEC08	26JAN09	-69	Prepare/Submit Final J-2 Remedial Const Rpt																																																																							
CL0635	EPA Approve Final J-2 Remedial Construction Rpt	15	15	27JAN09	17FEB09	-69	EPA Approve Final J-2 Remedial Construction Rpt																																																																							
J-2 Range																																																																														
SL0300	Prepare/Submit Draft J-2 DD	45	45	22JUN09	24AUG09	-188	Prepare/Submit Draft J-2 DD																																																																							
SL0310	Agency Review/Approve Draft J-2 DD	65*	65*	25AUG09	27NOV09	-188	Agency Review/Approve Draft J-2 DD																																																																							
SL0330	Prepare/Submit Final J-2 DD	20	20	30NOV09	28DEC09	-188	Prepare/Submit Final J-2 DD																																																																							
SL0340	EPA Issue J-2 DD	15	15	29DEC09	19JAN10	-188	EPA Issue J-2 DD																																																																							
J-3 Range																																																																														
J-3 Range Soil																																																																														
U1300	Prepare/Submit Draft J-3 UXO Source Assess WP	30	30	28APR08	09JUN08	0	Prepare/Submit Draft J-3 UXO Source Assess WP																																																																							
U1310	Agency Review/Appr Draft J-3 UXO SourceAssess.WP	65	65	10JUN08	10SEP08	0	Agency Review/Appr Draft J-3 UXO SourceAssess.WP																																																																							
U1320	Prepare/Submit Final J-3 UXO Source Assess WP	20	20	11SEP08	08OCT08	0	Prepare/Submit Final J-3 UXO Source Assess WP																																																																							
U1340	Prepare/Submit Draft J-3 UXO/Source RI	30	30	09OCT08	21NOV08	0	Prepare/Submit Draft J-3 UXO/Source RI																																																																							
U1350	Agency Review/Appr Draft J-3 UXO/Source RI	65	65	24NOV08	26FEB09	0	Agency Review/Appr Draft J-3 UXO/Source RI																																																																							
U1360	Prepare/Submit Final J-3 UXO/Source RI	20	20	27FEB09	26MAR09	0	Prepare/Submit Final J-3 UXO/Source RI																																																																							
U1370	Prepare/Submit Draft J-3 UXO/Source FS	60	60	27MAR09	19JUN09	0	Prepare/Submit Draft J-3 UXO/Source FS																																																																							
U1380	Agency Review/Appr Draft J-3 UXO/Source FS	65	65	22JUN09	22SEP09	0	Agency Review/Appr Draft J-3 UXO/Source FS																																																																							
U1390	Prepare/Submit Final J-3 UXO/Source FS	20	20	23SEP09	21OCT09	0	Prepare/Submit Final J-3 UXO/Source FS																																																																							
J-3 Range Groundwater																																																																														
CL1050	Prepare/Submit Draft J-3 GW RRA COWR	126*	0*	18AUG06A	15FEB07A	0																																																																								
CL1130	Agency Review/Approve Draft J-3 GW RRA COWR	90*	0*	16FEB07A	25JUN07A	10																																																																								
CL1150	Prepare/Submit Final J-3 GW RRA COWR	11	0	26JUN07A	23JUL07A	2																																																																								
10000	Prepare/Submit Draft J-3 GW RI/FS Report	204*	0*	13MAR06A	06DEC06A	0																																																																								
10009	Agency Review/Approve Draft J-3 GW RI/FS Report	249*	22*	07DEC06A	03DEC07	-124	Agency Review/Approve Draft J-3 GW RI/FS Report																																																																							
10020	Prepare/Submit Interim Final J-3 GW RI/FS Report (interim pending UXO/Source RI results)	20	20	04DEC07	02JAN08	-124	Prepare/Submit Interim Final J-3 GW RI/FS Report (interim pending UXO/Source RI results)																																																																							
DL0500	Prepare/Submit Draft J-3 GW RSP	268*	41*	07DEC06A	31DEC07	-140	Prepare/Submit Draft J-3 GW RSP																																																																							
DL0530	Agency Review/Approve Draft J-3 GW RSP	55*	55*	02JAN08	19MAR08	-140	Agency Review/Approve Draft J-3 GW RSP																																																																							
DL0550	Prepare/Submit Final J-3 GW RSP	10	10	20MAR08	02APR08	-140	Prepare/Submit Final J-3 GW RSP																																																																							

Activity ID	Activity Description	Orig Dur	Rem Dur	Anticipated /Actual Start	Anticipated /Actual Finish	Var	FY08				FY09				FY10				FY11				FY12												
							C	N	D	J	F	M	A	M	J	J	A	S	O	N	D	J	F	M	A	M	J	J	A	S	O	N	D	J	F
WB1026	Prepare/Submit Final Western Boundary RSP	10	10	02MAY08	15MAY08	-132																													
WB1028	Formal Public Comment Western Boundary RSP	30	30	16MAY08	15JUN08	-186																													
WB4010	Prepare/Submit Draft Western Boundary DD	20	20	16JUN08	14JUL08	-131																													
WB4060	Agency Review/Approve Draft Western Boundary DD	65*	65*	15JUL08	15OCT08	-131																													
WB4080	Prepare/Submit Final Western Boundary DD	20	20	16OCT08	13NOV08	-131																													
WB4090	EPA Issue Western Boundary DD	15	15	14NOV08	05DEC08	-131																													
WB4220	Prepare/Submit Draft Western Boundary LTM Plan	45	45	08DEC08	10FEB09	-131																													
WB4300	Agency Review/Approve Draft Western Bnd LTM Plan	55*	55*	11FEB09	29APR09	-131																													
WB4320	Prepare/Submit Final Western Boundary LTM Plan	20	20	30APR09	28MAY09	-131																													
Demo 2																																			
01574	Prepare/Submit Draft Demo 2 RI/FS Rpt	268*	119*	30MAR07A	21APR08	-154																													
01578	Agency Review/Approve Draft Demo 2 RI/FS Rpt	65*	65*	22APR08	23JUL08	-154																													
01579	Prepare/Submit Final Demo 2 RI/FS Rpt	20	20	24JUL08	20AUG08	-154																													
01608	Prepare/Submit Draft Demo 2 RSP	30	30	21AUG08	02OCT08	-154																													
01609	Agency Review/Approve Draft Demo 2 RSP	55*	55*	03OCT08	23DEC08	-154																													
01611	Prepare/Submit Final Demo 2 RSP	20	20	24DEC08	22JAN09	-154																													
01613	Formal Public Comment Demo 2 RSP	30	30	23JAN09	22FEB09	-218																													
01615	Prepare/Submit Draft Demo 2 DD	20	20	23FEB09	20MAR09	-153																													
01623	Agency Review/Approve Demo 2 DD	65*	65*	23MAR09	22JUN09	-153																													
01624	Prepare/Submit Final Demo 2 DD	20	20	23JUN09	21JUL09	-153																													
01625	EPA Issue Demo 2 DD	15	15	22JUL09	11AUG09	-153																													
2D0100	Prepare/Submit Draft Demo 2 LTM Plan	45	45	12AUG09	15OCT09	-153																													
2D0110	Agency Review/Approve Draft Demo 2 LTM Plan	55*	55*	16OCT09	06JAN10	-153																													
2D0120	Prepare/Submit Final Demo 2 LTM Plan	20	20	07JAN10	03FEB10	-153																													
Gun & Mortar																																			
00606	Prepare/Submit Draft G&M Investigation Workplan	296*	0*	08DEC05A	09FEB07A	0																													
00608	Agency Review/Approve Draft G&M Invest Workplan	207*	25*	12FEB07A	06DEC07	-103																													
00619	Prepare Final G&M Investigation Workplan	20	20	07DEC07	07JAN08	-103																													
CL2116	Conduct G&M Investigation	269*	111*	19MAR07A	09APR08	-156																													

Activity ID	Activity Description	Orig Dur	Rem Dur	Anticipated /Actual Start	Anticipated /Actual Finish	Var	FY08					FY09					FY10					FY11					FY12									
							O	N	D	J	F	M	A	M	J	J	A	S	O	N	D	J	F	M	A	M	J	J	A	S	O	N	D	J	F	M
2B0204	EPA Issue Phase IIb NFA DD	15	15	28JUL08	15AUG08	-128																														
00890	Agency Rvw/Approve Training Areas Data Summry Rt	254	10	15FEB05A	14NOV07	-128																														
00891	Prep/Submit Final Training Areas Data Summary Rt	20	20	15NOV07	13DEC07	-128																														
Small Arms Range																																				
016900	Prepare/Submit Draft SAR Tango Investigation Rpt	56*	0*	10OCT06A	14DEC06A	0																														
016901	Agency Rvw/Aprr Draft Final SAR Tango Invstig Rt	200*	0*	15DEC06A	17JUL07A	-26																														
016903	Prepare/Submit Final SAR Tango Investigation Rpt	5	0	18JUL07A	27JUL07A	-29																														
SAR6000	Pre/Submit Draft SAR Echo Investigation Rpt	166*	0*	14DEC06A	29JUN07A	0																														
SAR6080	Agency Review/Approve Draft Echo Investigation	125*	41*	02JUL07A	31DEC07	-70																														
SAR6090	Prepare Final SAR Echo Investigation Rpt	20	20	02JAN08	29JAN08	-70																														
SAR7010	Prepare Draft Juliet/Kilo Work Plan	34*	0*	12SEP07A	25OCT07A	0																														
SAR7020	Conduct SAR Juliet/Kilo Field Investigation	50*	26*	26SEP07A	07DEC07	0																														
SAR7030	Prepare/Submit Draft SAR Juliet/Kilo Investig Rt	33	33	10DEC07	25JAN08	0																														
SAR7040	Agency Review/Approve Draft Juliet/Kilo Investig	65	65	28JAN08	28APR08	0																														
SAR7050	Prepare Final SAR Juliet/Kilo Investigation Rpt	20	20	29APR08	27MAY08	0																														
01723	Resubmit Draft SAR Investigation Workplan	0	0		13MAR07A	-1																														
01725	Agency Review/Approve Draft SAR Invest Workplan	187*	26*	14MAR07A	07DEC07	-113																														
01727	Prepare/Submit Final SAR Investigation Workplan	20	20	10DEC07	08JAN08	-113																														
01597	Conduct SAR Investigation	60	60	09JAN08	02APR08	-173																														
SAR1900	Prepare/Submit Draft SAR Investigation Rpt	110	110	03APR08	08SEP08	-173																														
SAR1910	Agency Review/Approve Draft SAR Investigation	55*	55*	09SEP08	26NOV08	-173																														
SAR1920	Prepare Final SAR Investigation Report	20	20	28NOV08	26DEC08	-173																														
01800	Prepare/Submit Draft SAR Soil RRA Plan	49	49	28NOV08	06FEB09	-173																														
01804	Agency Review/Approve Draft SAR Soil RRA Plan	55	55	09FEB09	27APR09	-173																														
SAR01805	Informal Public Comment SAR Soil RRA Plan	15	15	03MAR09	17MAR09	-247																														
01898	Prepare/Submit Final SAR Soil RRA Plan	20	20	28APR09	26MAY09	-173																														
01900	Conduct SAR Soil RRA	90	90	28APR09	02SEP09	-173																														
01812	Prepare/Submit Draft SAR Soil RRA COWR	40	40	03SEP09	30OCT09	-173																														
01816	Agency Review/Approve Draft SAR Soil RRA COWR	55	55	02NOV09	21JAN10	-173																														
01899	Prepare/Submit Final SAR Soil RRA COWR	10	10	22JAN10	04FEB10	-173																														

