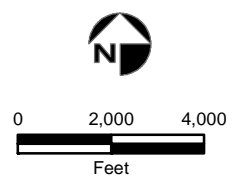


- | | | |
|--|---|---|
| ● Validated Detection Greater than or Equal to Maximum Contaminant Level/Health Advisories | ■ Validated Non-Detect Water Supply Well | ⊕ Current Gun Position |
| ● Validated Detection Less than Maximum Contaminant Level/Health Advisories | ■ Validated Detection Less than Maximum Contaminant Level/Health Advisories Water Supply Well | * Current Mortar Position |
| ● Validated Non-Detect | □ Proposed Water Supply Well | ⊕ Old Gun Position |
| ● Data Pending | | * Old Mortar Position |
| ○ Proposed Monitoring Well | | --- Water Table Contour (Feet NGVD), AMEC, September 2003 |
| | | ■ Military Range Areas |

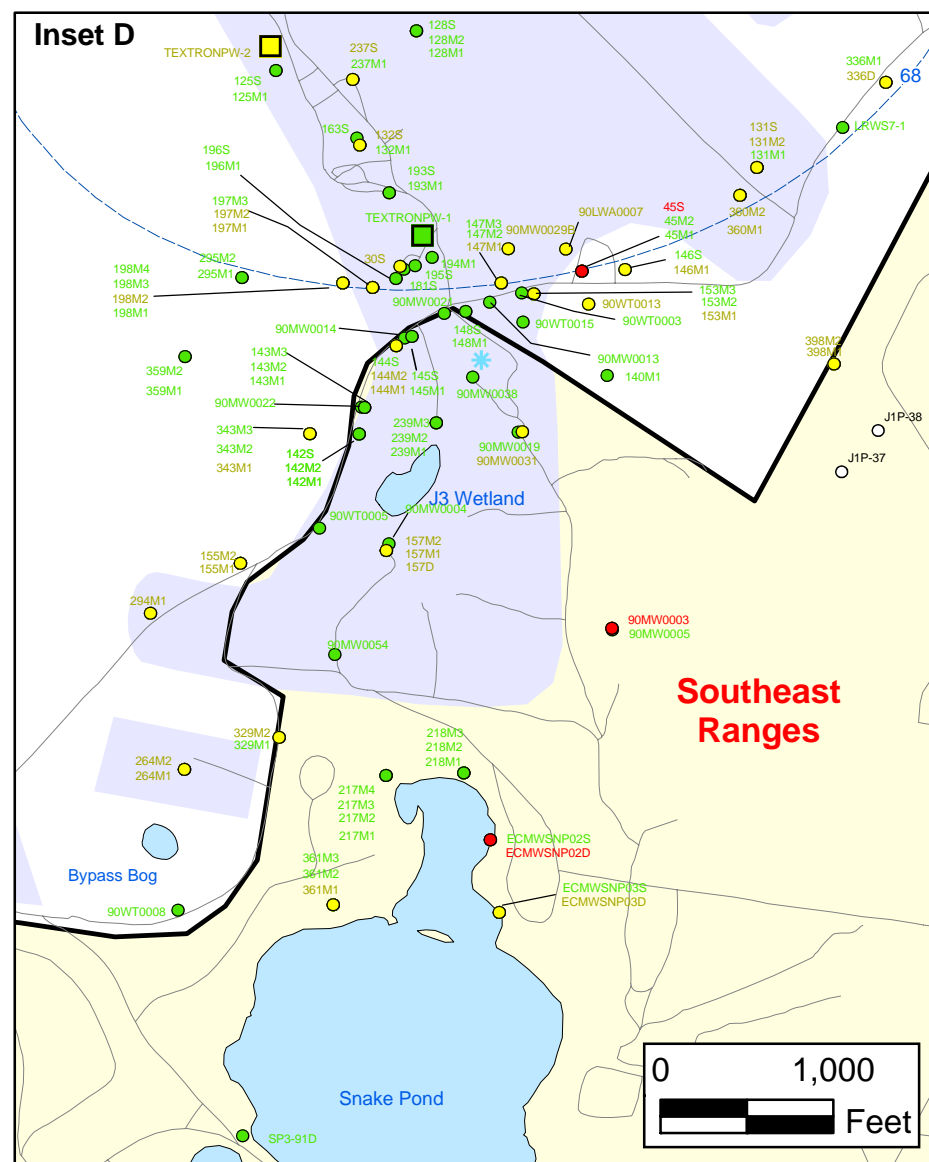
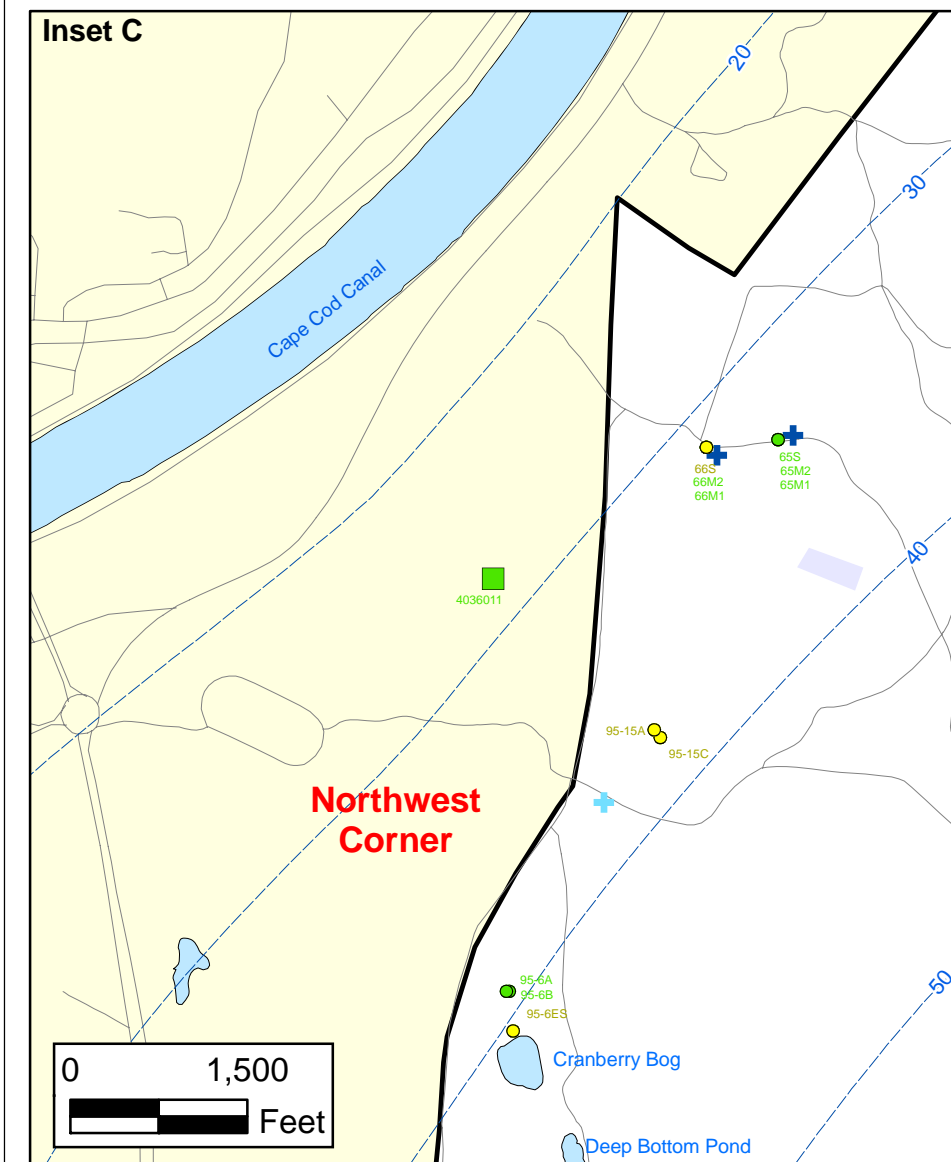
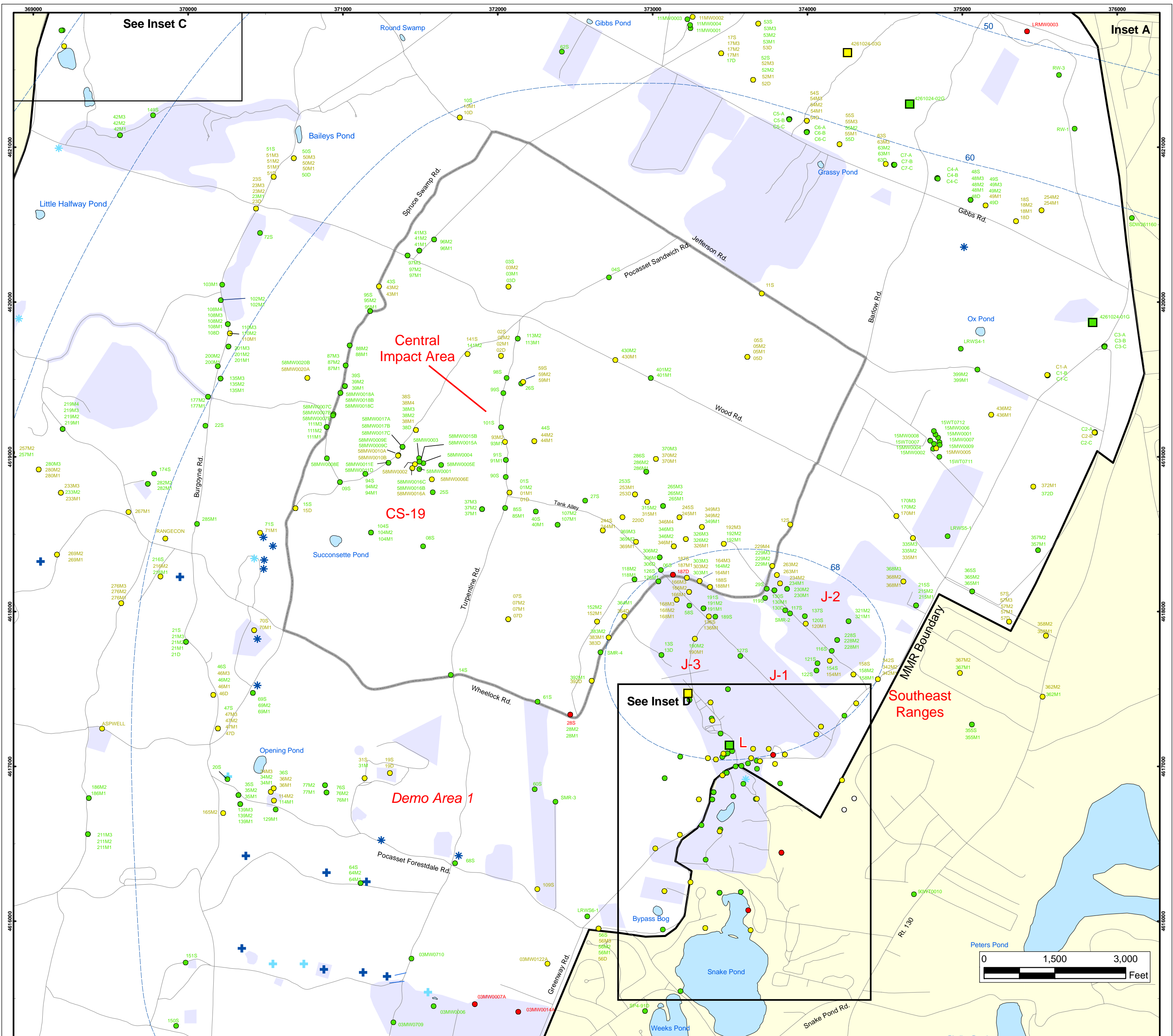
Note: Map dot colors are representative of the highest historical concentration at each well and not the current concentration level. Historical data presented on this figure range from November 1996 through 2006.



Sources & Notes
Base map data from US Geological Survey
7 1/2 minute Topographic Maps.
Source: MassGIS

**Volatile Organic Compounds (Excluding Chloroform) in Groundwater
Compared to Maximum Contaminant Level/Health Advisories
Validated Data as of 09/29/06**





Volatile Organic Compounds (Excluding Chloroform) in Groundwater Compared to Maximum Contaminant Level/Health Advisories Validated Data as of 09/29/06

- Validated Detection Greater than or Equal to Maximum Contaminant Level/Health Advisories
- Validated Detection Less than Maximum Contaminant Level/Health Advisories
- Validated Non-Detect
- Data Pending
- Proposed Monitoring Well
- Military Range Areas
- + Current Gun Position
- * Current Mortar Position
- + Old Gun Position
- * Old Mortar Position
- Validated Non-Detect Water Supply Well
- Validated Detection Less than Maximum Contaminant Level/Health Advisories Water Supply Well
- Water Table Contour (Feet NGVD), AMEC, September 2003

Note: Map dot colors are representative of the highest historical concentration at each well and not the current concentration level. Historical data presented on this figure range from November 1996 through 2006.

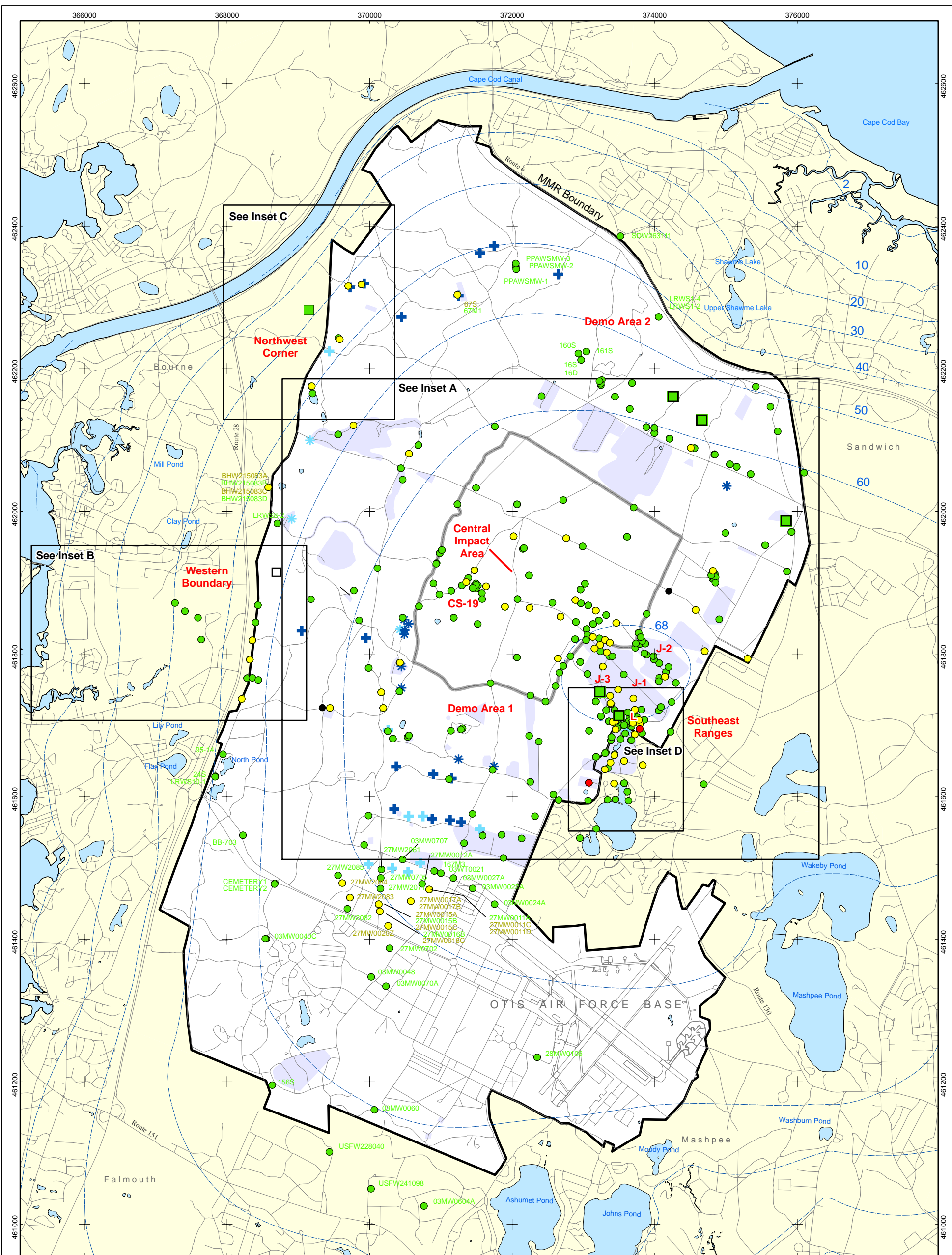
**Impact Area
Groundwater Study Program**

AMEC Earth & Environmental, Inc.
Westford, Massachusetts

Sources & Notes
Base map data from US Geological Survey
7 1/2 minute Topographic Maps
Source: Office of Geographic and
Environmental Information (MassGIS)
Commonwealth of Massachusetts
Executive Office of Environmental Affairs


FIGURE
3

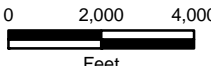
Inset Map



- Validated Detection Greater than or Equal to Maximum Contaminant Level/Health Advisories
- Data Pending
- Validated Detection Less than Maximum Contaminant Level/Health Advisories
- Proposed Monitoring Well
- Validated Non-Detect
- Validated Non-Detect Water Supply Well
- Proposed Water Supply Well
- ⊕ Current Gun Position
- ⊛ Current Mortar Position
- ⊕ Old Gun Position
- ⊛ Old Mortar Position
- Water Table Contour (Feet NGVD) AMEC, September 2003
- Military Range Areas

Note: Map dot colors are representative of the highest historical concentration at each well and not the current concentration level. Historical data presented on this figure range from November 1996 through 2006.



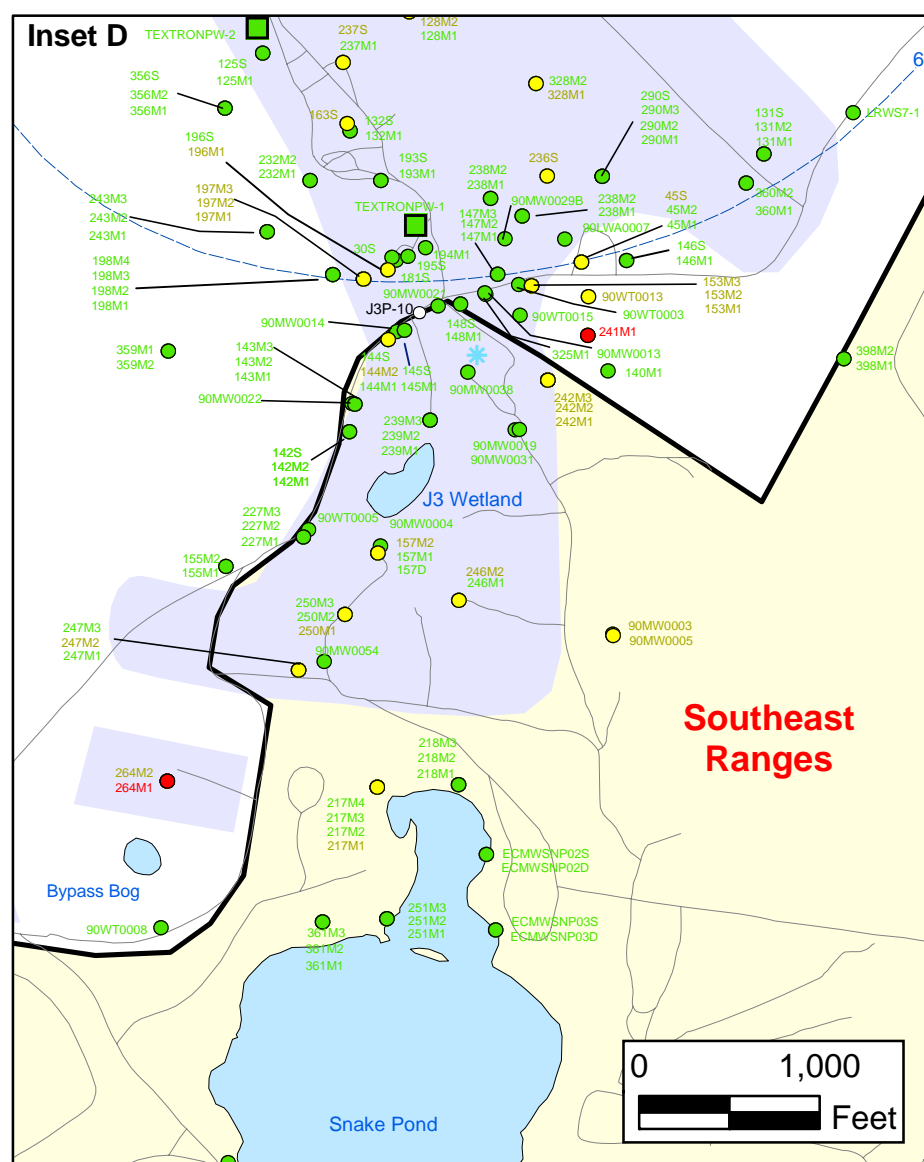
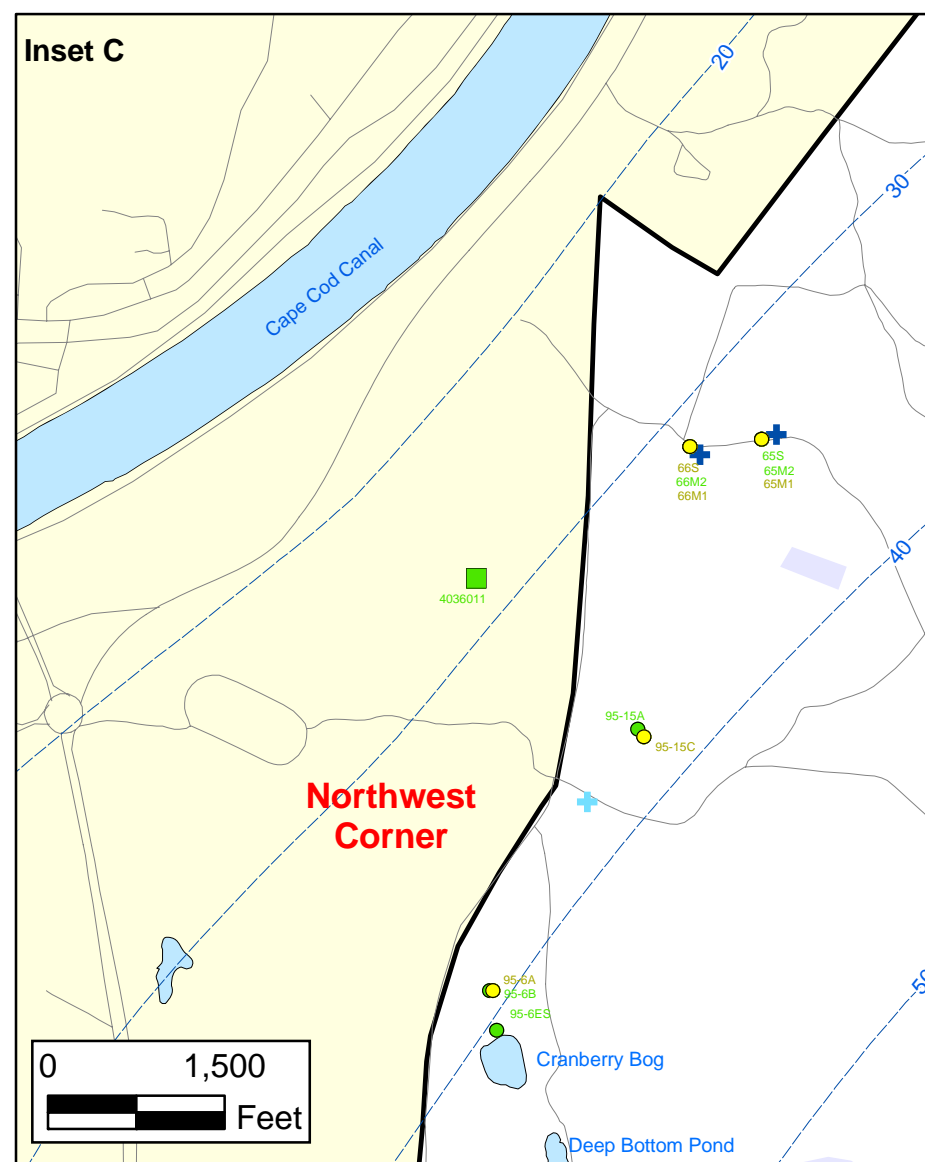
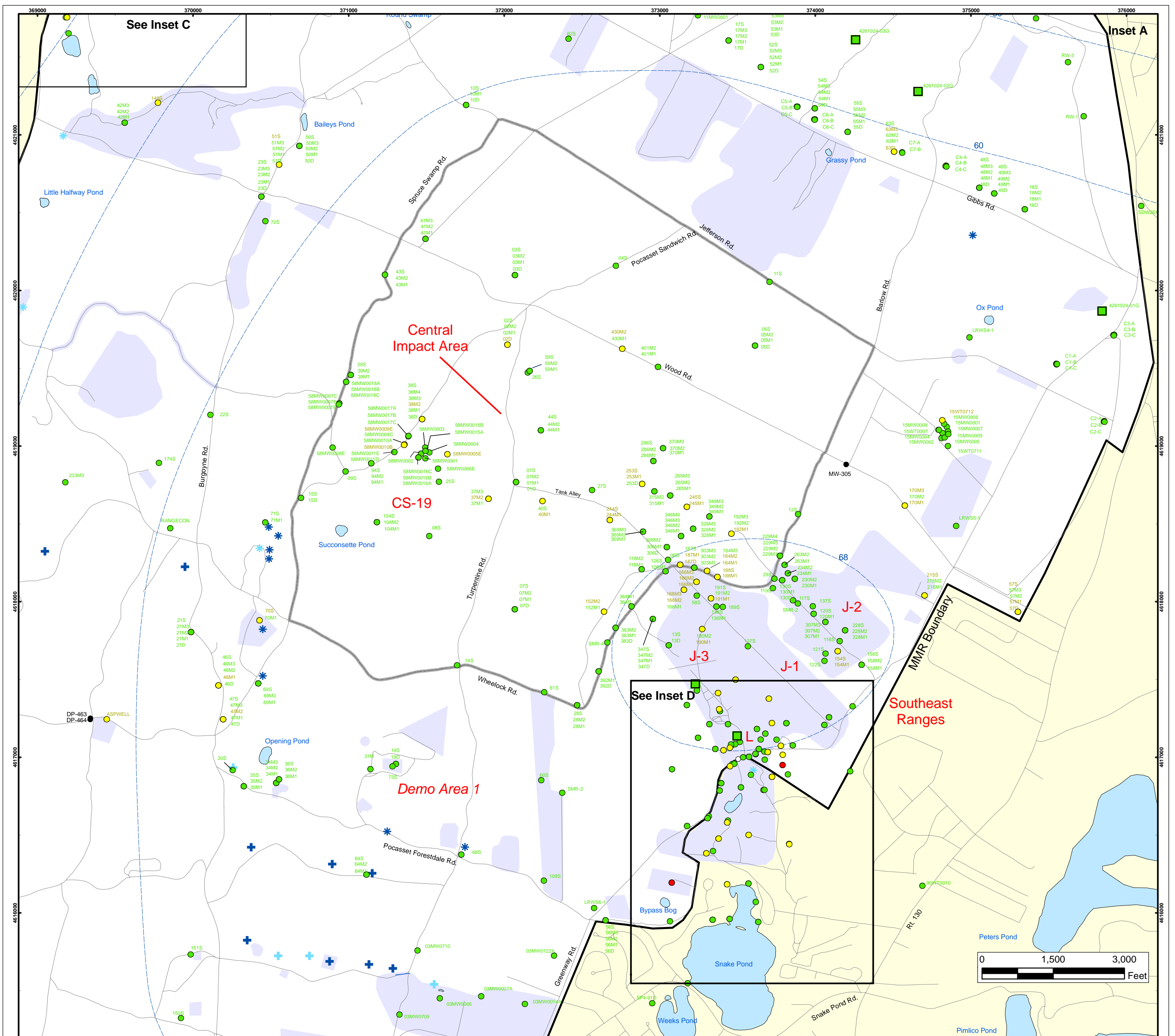


Sources & Notes
 Base map data from US Geological Survey 7 1/2 minute Topographic Maps.
 Source: Office of Geographic and Environmental Information (MassGIS) Commonwealth of Massachusetts
 Executive Office of Environmental Affairs

Semi-Volatile Organic Compounds (Excluding BEHP) in Groundwater Compared to Maximum Contaminant Level/Health Advisories Validated Data as of 09/29/06

AMEC Earth & Environmental, Inc.
 Westford, Massachusetts

FIGURE
5



Semi-Volatile Organic Compounds (Excluding BEHP) in Groundwater Compared to Maximum Contaminant Level/Health Advisories Validated Data as of 09/29/06

- Validated Detection Greater than or Equal to Maximum Contaminant Level/Health Advisories
- Validated Detection Less than Maximum Contaminant Level/Health Advisories
- Validated Non-Detect
- Data Pending
- Proposed Monitoring Well
- Military Range Areas
- + Current Gun Position
- + Current Mortar Position
- + Old Gun Position
- + Old Mortar Position
- Validated Non-Detect Water Supply Well
- Water Table Contour (Feet NGVD), AMEC, September 2003

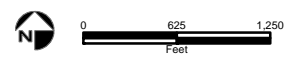
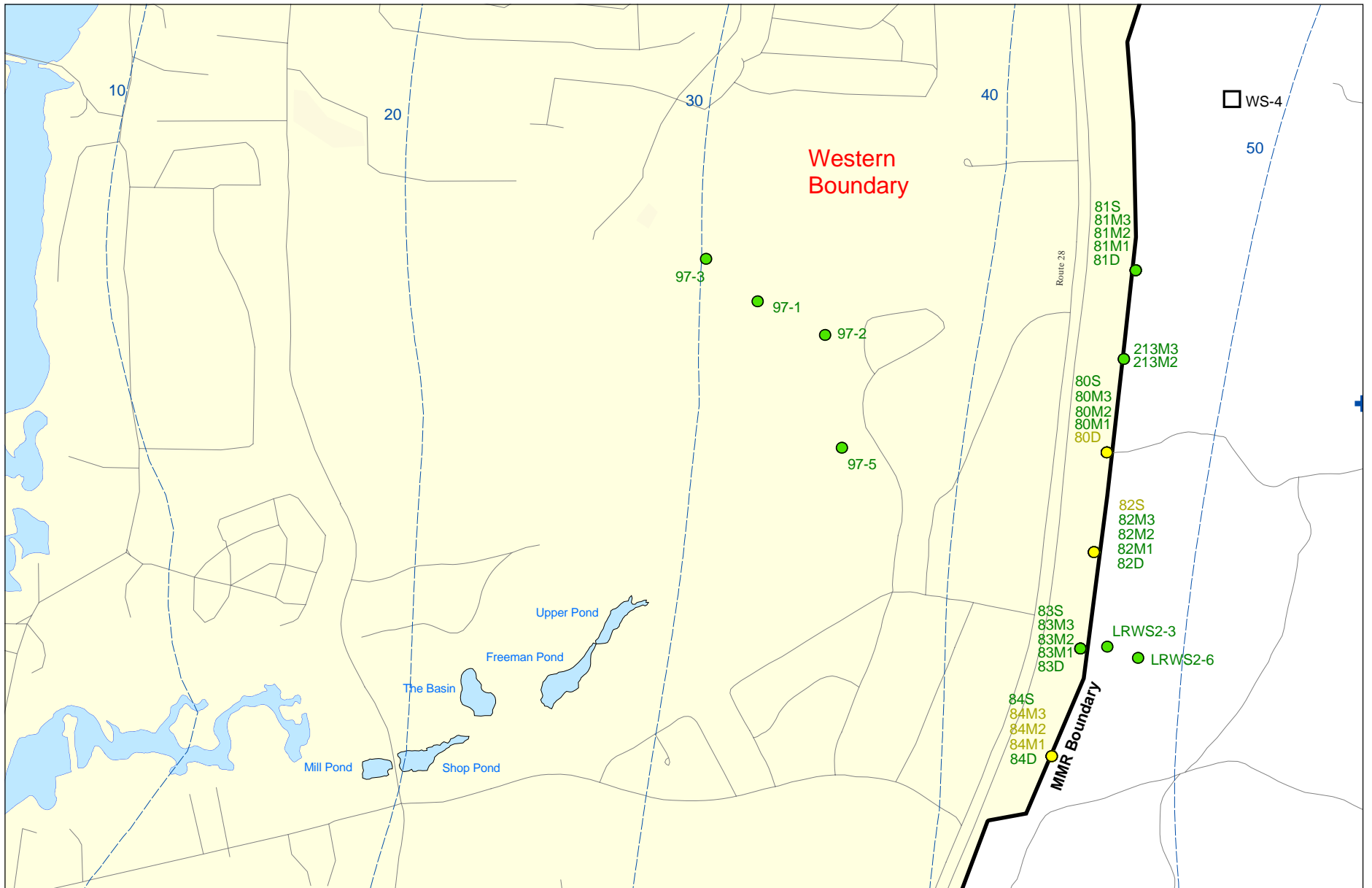
Note: Map dot colors are representative of the highest historical concentration at each well and not the current concentration level. Historical data presented on this figure range from November 1996 through 2006.

Impact Area
Groundwater Study Program

Sources & Notes
Base map data from US Geological Survey
7 1/2 minute Topographic Maps
Source: Office of Geographic and
Environmental Information (MassGIS)
Commonwealth of Massachusetts
Executive Office of Environmental Affairs

AMEC Earth & Environmental, Inc.
Westford, Massachusetts

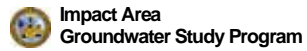
FIGURE 5
Inset Map



Sources & Notes:
 Base map data from US Geological Survey
 7 1/2 minute Topographic maps.
 Source: Office of Geographic and
 Environmental Information (MassGIS)
 Commonwealth of Massachusetts
 Executive Office of Environmental Affairs

- Validated Detection Less than Maximum Contaminant Level/Health Advisories
- Validated Non-Detect
- Proposed Water Supply Well
- + Current Gun Position
- Water Table Contour (Feet NGVD), AMEC, September 2003

Semi-Volatile Organic Compounds (Excluding BEHP) in Groundwater Compared to Maximum Contaminant Level/Health Advisories
 Validated Data as of 09/29/06



Note: Map dot colors are representative of the highest historical concentration at each well and not the current concentration level. Historical data presented on this figure range from November 1996 through 2006.

Inset Map B 5 **FIGURE**