


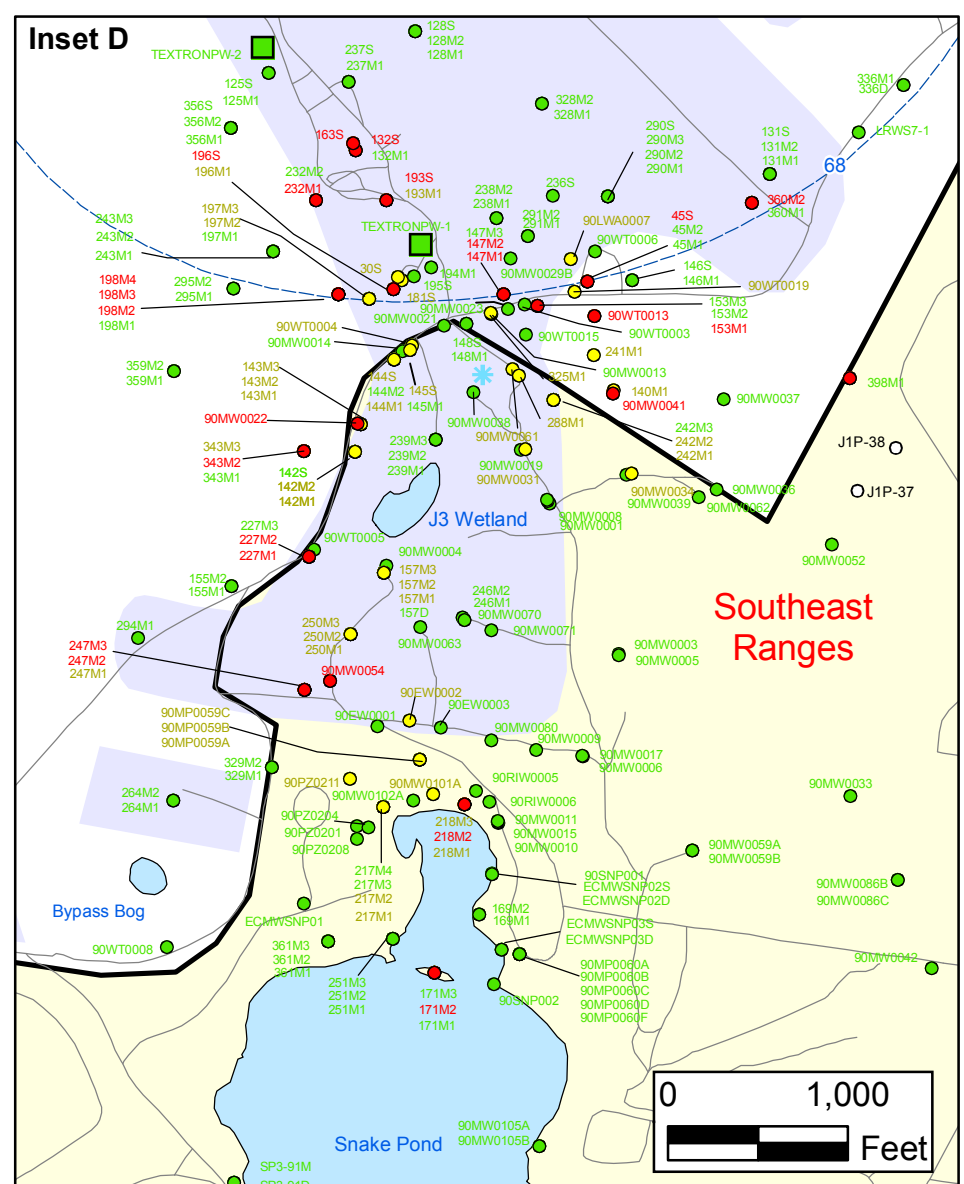
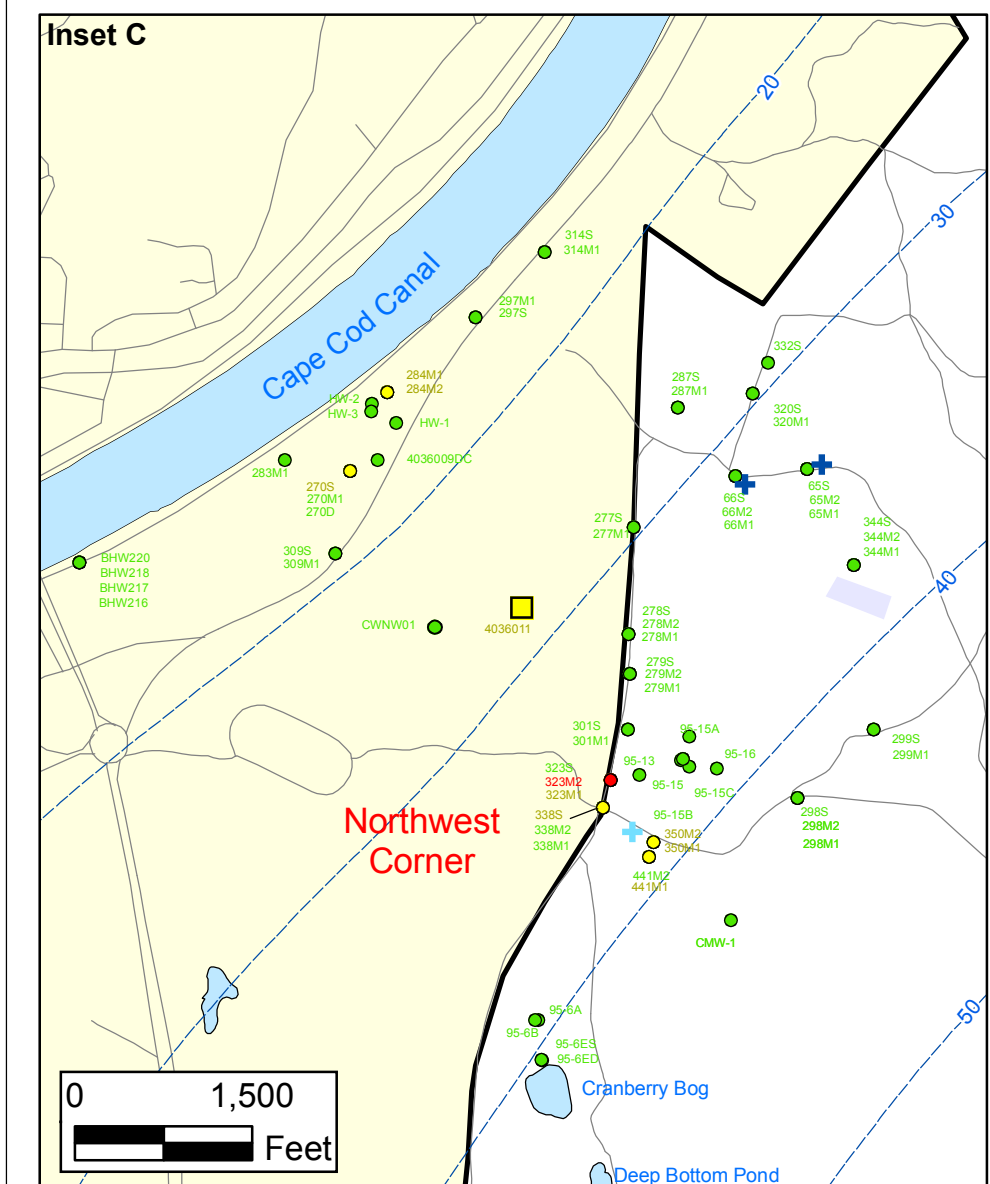
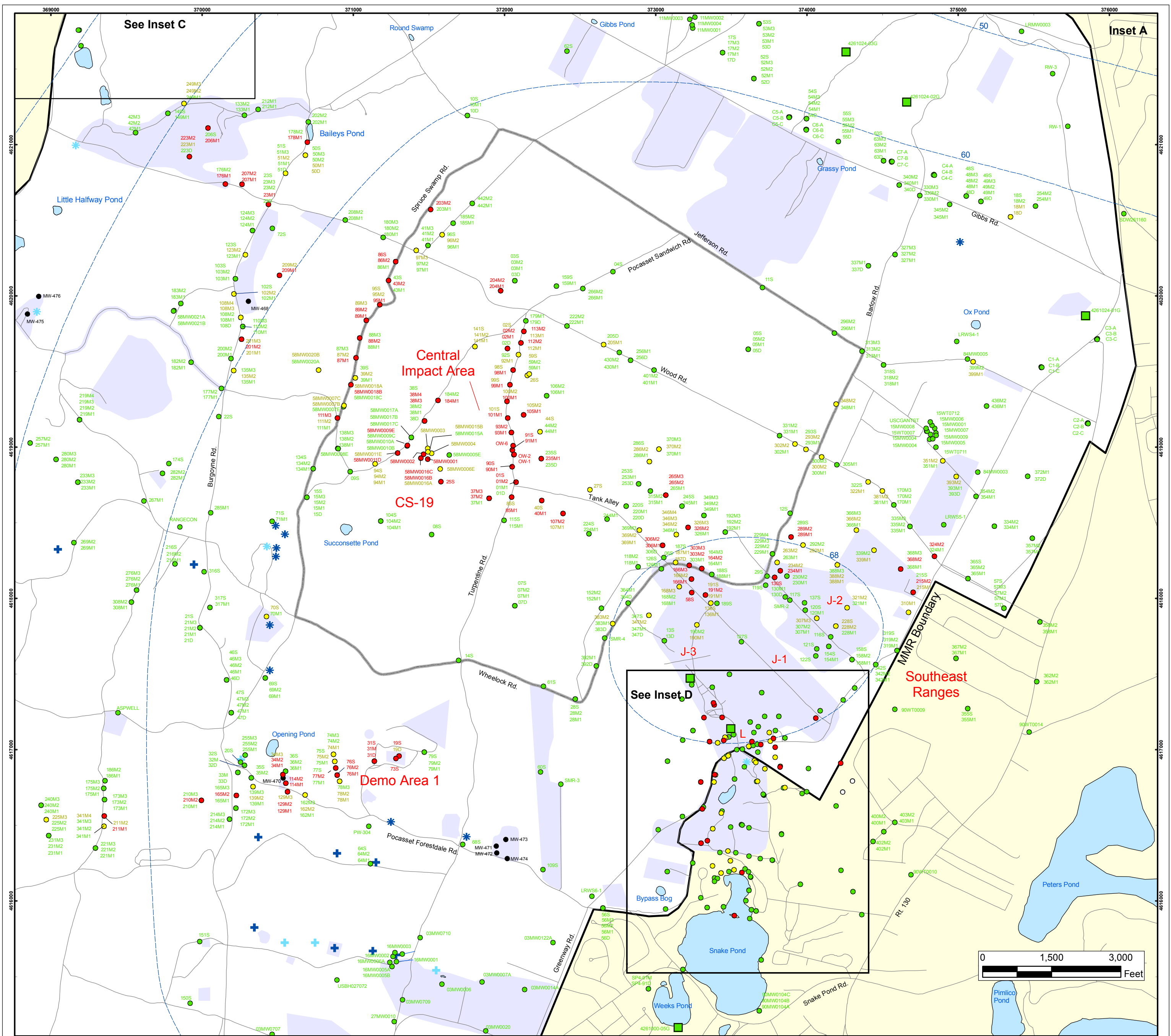
- | | | |
|---|-----------------------------------|--|
| S Validated Detection Greater than or Equal to Maximum Contaminant Level/Health Advisories | S Data Pending | C Validated Non-Detect Water Supply Well |
| S Validated Detection Less than Maximum Contaminant Level/Health Advisories | S Proposed Monitoring Well | C Validated Detection Less than Maximum Contaminant Level/Health Advisories Water Supply Well |
| S Validated Non-Detect | G Current Gun Position | C Proposed Water Supply Well |
| | K Current Mortar Position | - - - Water Table Contour (Feet NGVD) |
| | G Old Gun Position | - - - AMEC, September 2003 |
| | K Old Mortar Position | ■ Military Range Areas |

Note: Map dot colors are representative of the highest historical concentration at each well and not the current concentration level. Historical data presented on this figure range from November 1996 through 2006.


 0 2,000 4,000
 Feet

Sources & Notes
 Base map data from US Geological Survey
 7 1/2 minute Topographic Maps.
 Source: Office of Geographic and
 Environmental Information (MassGIS)
 Commonwealth of Massachusetts
 Executive Office of Environmental Affairs

Explosives in Groundwater Compared to Maximum Contaminant Level/Health Advisories Validated Data as of 10/26/06



Explosives in Groundwater Compared to Maximum Contaminant Level/Health Advisories

Validated Data as of 10/26/06

- Validated Detection Greater than or Equal to Maximum Contaminant Level/Health Advisories
- Validated Detection Less than Maximum Contaminant Level/Health Advisories
- Validated Non-Detect
- Data Pending
- Proposed Monitoring Well
- Military Range Areas
- + Current Gun Position
- * Current Mortar Position
- + Old Gun Position
- * Old Mortar Position
- Validated Non-Detect Water Supply Well
- Validated Detection Less than Maximum Contaminant Level/Health Advisories Water Supply Well
- Water Table Contour (Feet NGVD), AMEC, September 2003

Note: Map dot colors are representative of the highest historical concentration at each well and not the current concentration level. Historical data presented on this figure range from November 1996 through 2006.

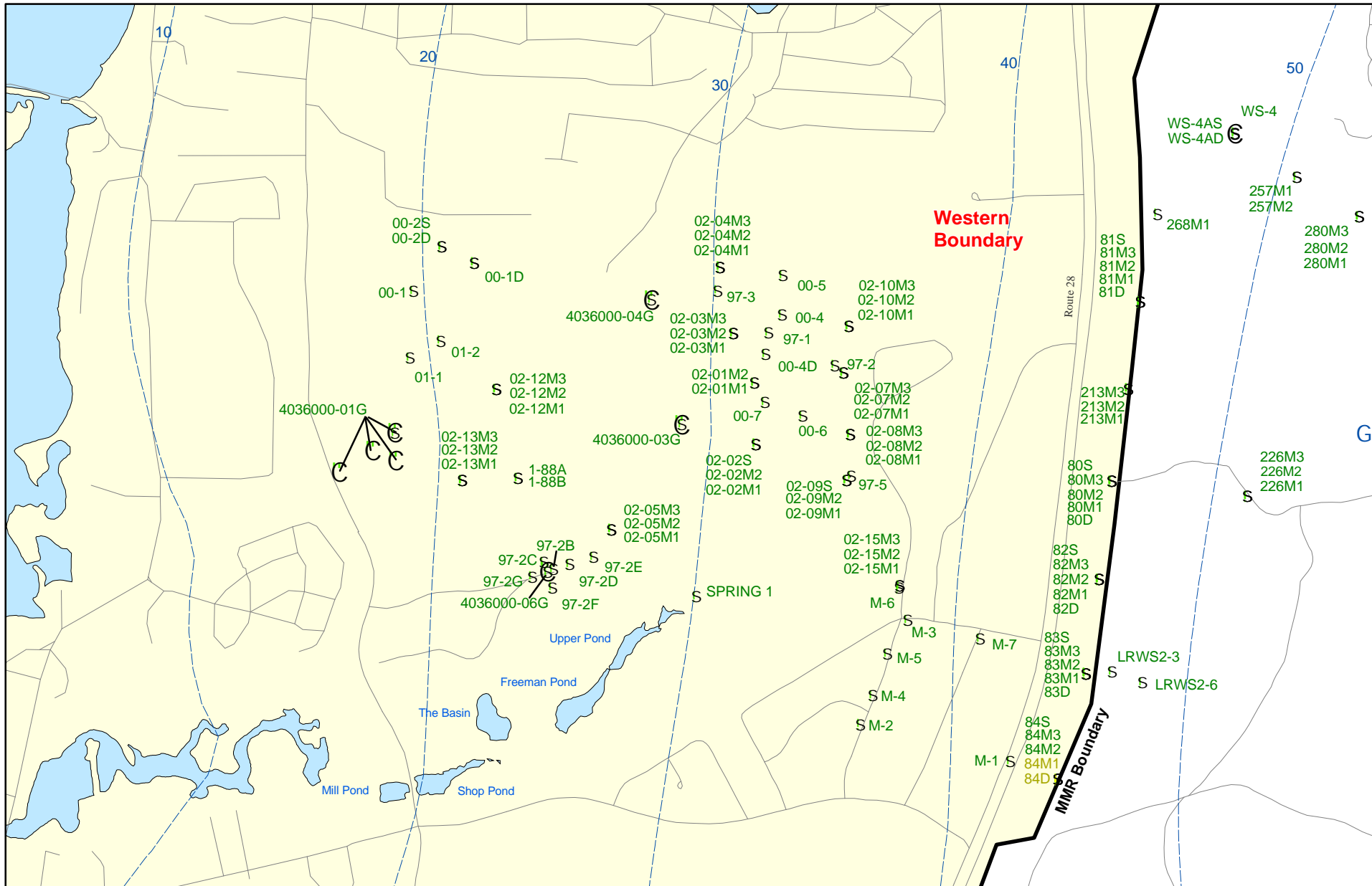
**Impact Area
Groundwater Study Program**

AMEC Earth & Environmental, Inc.
Westford, Massachusetts

**FIGURE
1**

Inset Map

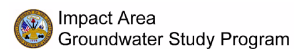
Sources & Notes
Base map data from US Geological Survey
7 1/2 minute Topographic Maps
Source: Office of Geographic and
Environmental Information (MassGIS)
Commonwealth of Massachusetts
Executive Office of Environmental Affairs



Sources & Notes:
 Base map data from US Geological Survey
 7 1/2 minute Topographic maps.
 Source: Office of Geographic and
 Environmental Information (MassGIS)
 Commonwealth of Massachusetts
 Executive Office of Environmental Affairs

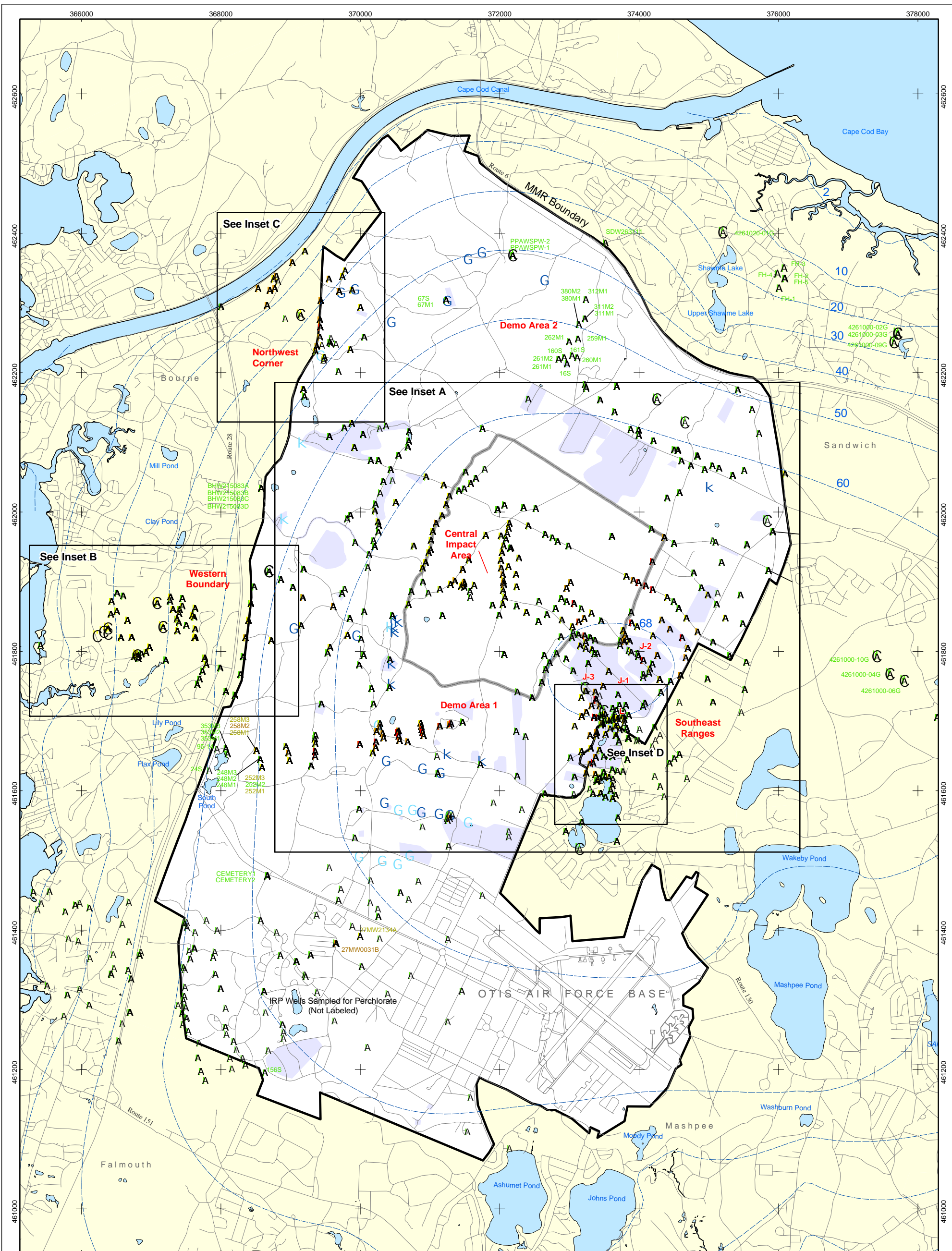
- S Validated Detection Less than Maximum Contaminant Level/Health Advisories
- S Validated Non-Detect
- G Current Gun Position
- C Validated Non-Detect Water Supply Well
- C Proposed Water Supply Well
- Water Table Contour (Feet NGVD)
 AMEC, September 2003

Explosives in Groundwater Compared to Maximum Contaminant Level/Health Advisories Validated Data as of 10/26/06



Note: Map dot colors are representative of the highest historical concentration at each well and not the current concentration level.
 Historical data presented on this figure range from November 1996 through 2006.

Inset Map B 1



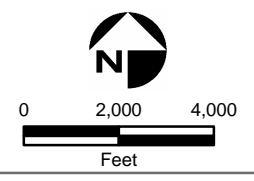
- S Validated Detection Greater than or Equal to 24 ppb
- S Validated Detection Greater than or Equal to 2 and Less than 24 ppb
- S Validated Detection Greater than Non-Detect and Less than 2 ppb
- S Validated Non-Detect

Note: Map dot colors are representative of the highest historical concentration at each well and not the current concentration level. Historical data presented on this figure range from November 1996 through 2006.

- S Data Pending
- S Proposed Monitoring Well
- G Current Gun Position
- K Current Mortar Position
- G Old Gun Position
- K Old Mortar Position

- C Validated Non-Detect Water Supply Well
- C Validated Detection Less than 2 ppb Water Supply Well
- C Proposed Water Supply Well

- Water Table Contour (Feet NGVD) AMEC, September 2003
- Military Range Areas

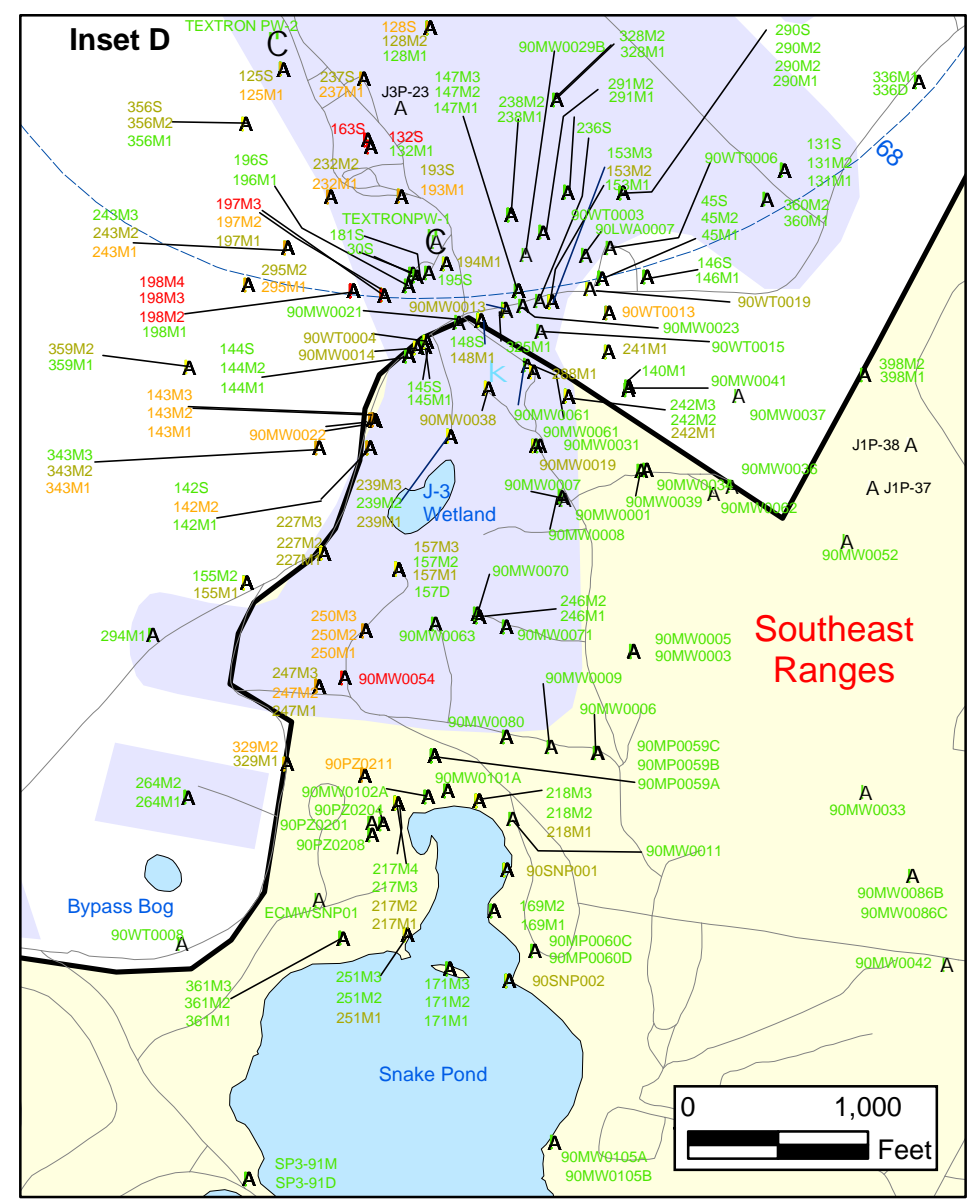
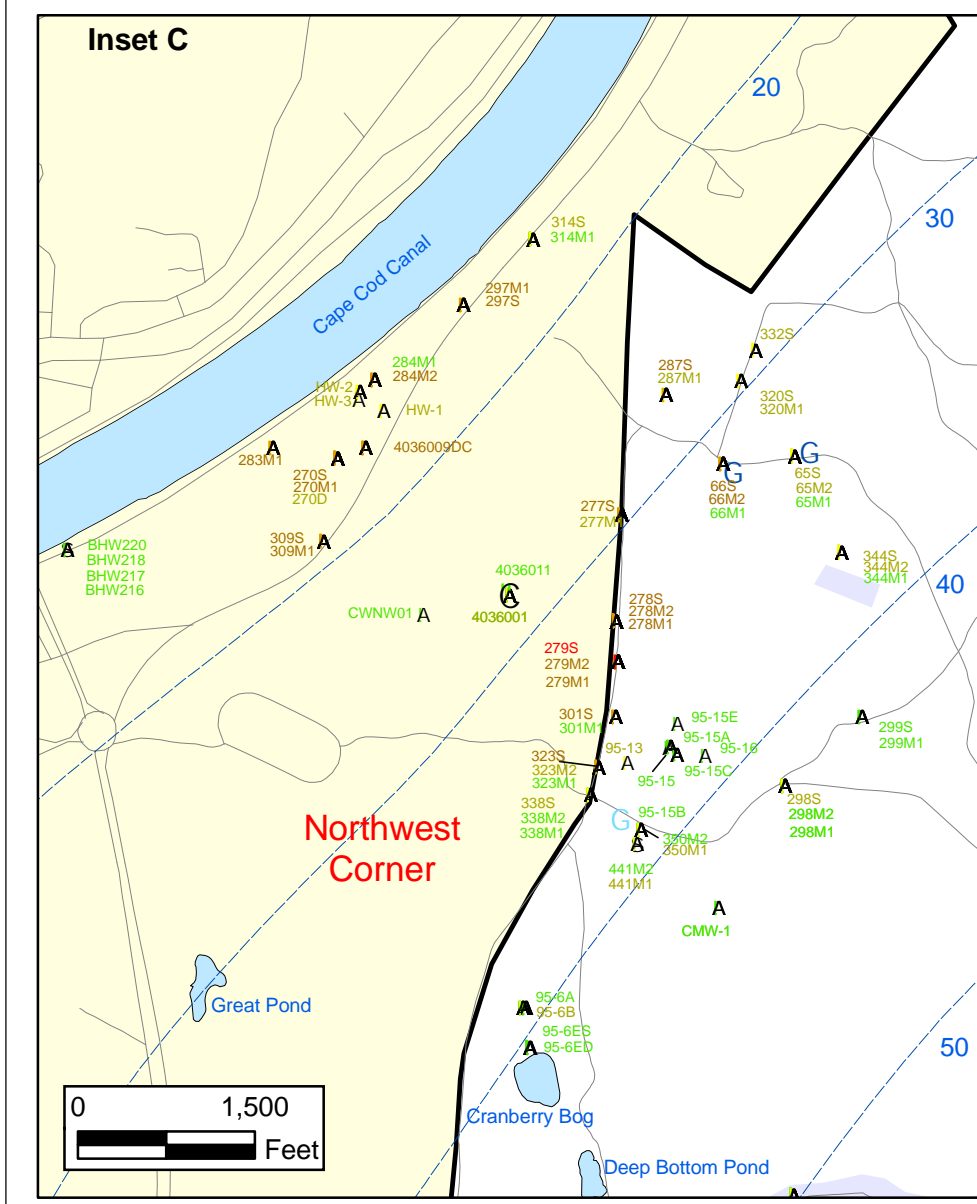
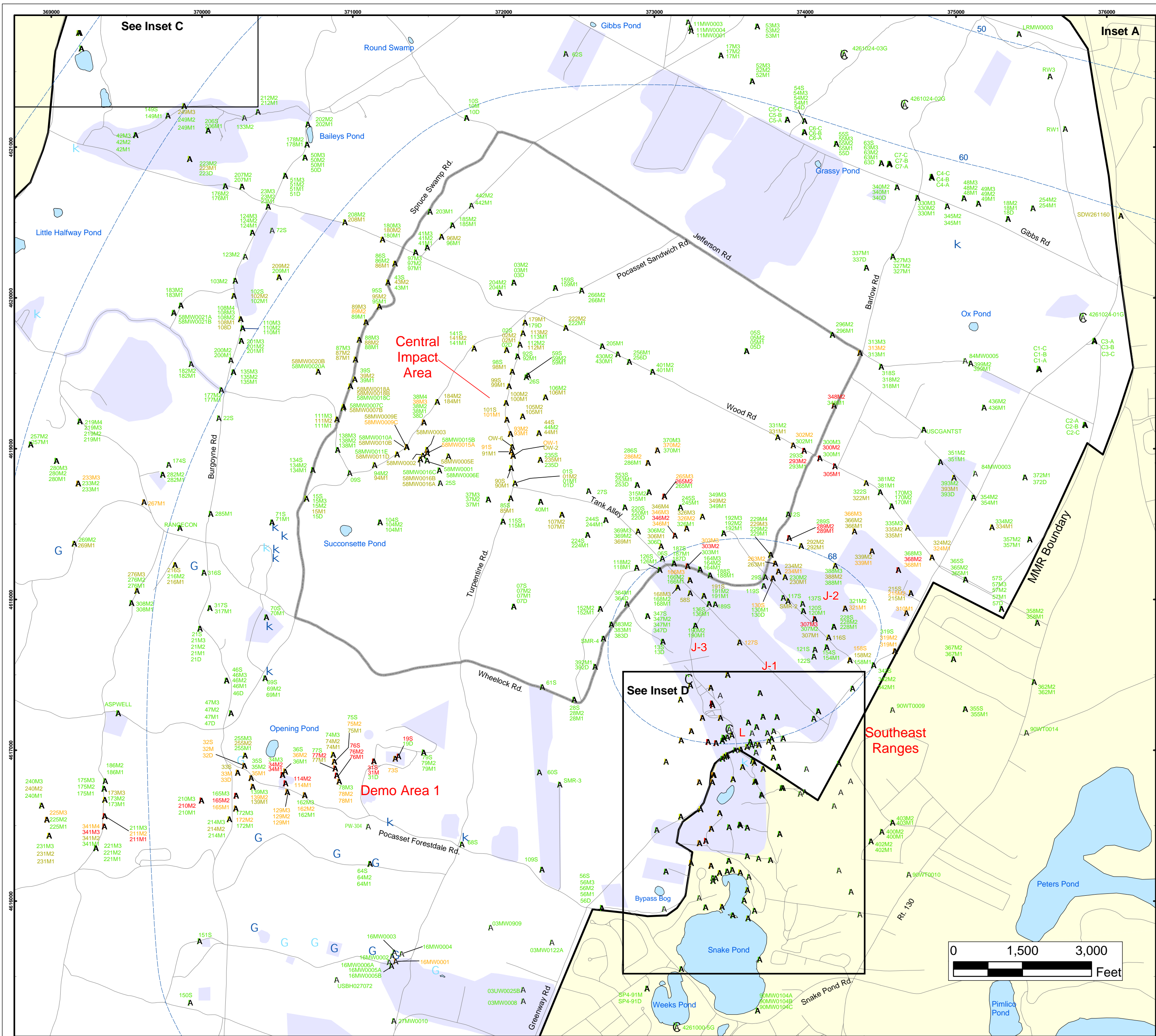


Sources & Notes
 Base map data from US Geological Survey 7 1/2 minute Topographic Maps.
 Source: Office of Geographic and Environmental Information (MassGIS) Commonwealth of Massachusetts Executive Office of Environmental Affairs

AMEC Earth & Environmental, Inc.
 Westford, Massachusetts

Perchlorate in Groundwater Compared to a 2 ppb Concentration Validated Data as of 10/26/06

FIGURE
8



Perchlorate in Groundwater Compared to a 2 PPB Concentration Validated Data as of 10/26/06

- S Validated Detection Greater than or Equal to 24 ppb
- S Validated Detection Greater than or Equal to 2 and Less than 24 ppb
- S Validated Detection Less than 2 ppb
- S Validated Non-Detect
- A Data Pending
- (Proposed Monitoring Well
- Military Range Areas
- G Current Gun Position
- K Current Mortar Position
- G Old Gun Position
- K Old Mortar Position
- Validated Non-Detect Water Supply Well
- Water Table Contour (Feet NGVD), AMEC, September 2003

Note: Map dot colors are representative of the highest historical concentration at each well and not the current concentration level. Historical data presented on this figure range from November 1996 through 2006.

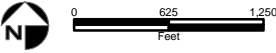
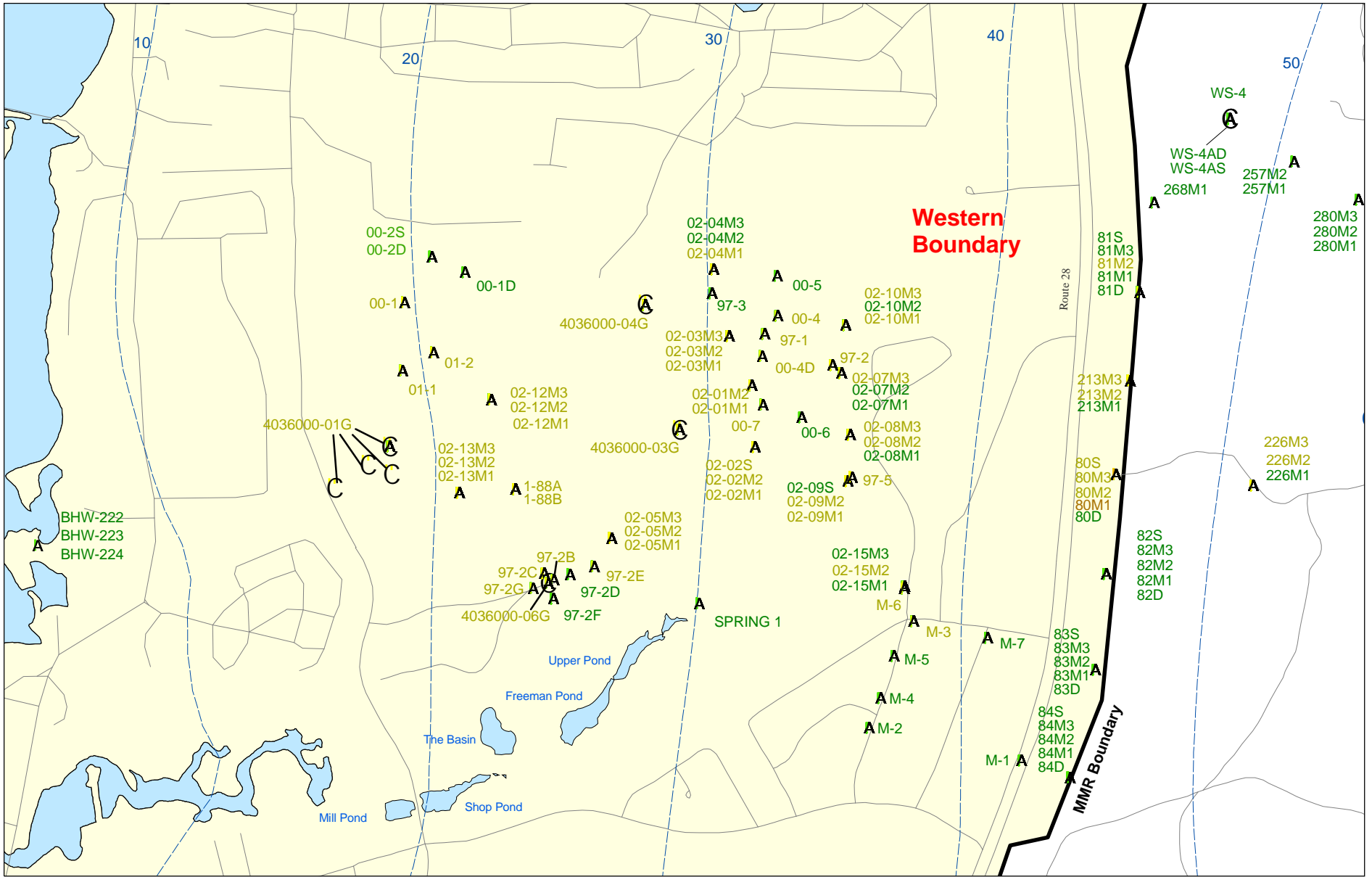
**Impact Area
Groundwater Study Program**

Sources & Notes
Base map data from US Geological Survey
7 1/2 minute Topographic Maps
Source: Office of Geographic and
Environmental Information (MassGIS)
Commonwealth of Massachusetts
Executive Office of Environmental Affairs

AMEC Earth & Environmental, Inc.
Westford, Massachusetts

**FIGURE
8**

Inset Map



Sources & Notes:
 Base map data from US Geological Survey
 7 1/2 minute Topographic maps.
 Source: Office of Geographic and
 Environmental Information (MassGIS)
 Commonwealth of Massachusetts
 Executive Office of Environmental Affairs

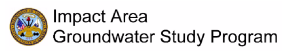
AMEC Earth & Environmental, Inc.
 Westford, Massachusetts

- S Validated Detection Greater than or Equal to 2 and Less than 24 ppb
- S Validated Detection Greater than Non-Detect and Less than 2 ppb
- S Validated Non-Detect

Note: Map dot colors are representative of the highest historical concentration at each well and not the current concentration level.
 Historical data presented on this figure range from November 1996 through 2006.

- C Validated Detection Less than 2 ppb Water Supply Well
- C Proposed Water Supply Well
- G Current Gun Position
- Water Table Contour (Feet NGVD) AMEC, September 2003

Perchlorate in Groundwater Compared to a 2 ppb Concentration Validated Data as of 10/26/06



Inset Map B **8**

Activity ID	Activity Description	Proposed Enforceable Milestone	Orig Dur	Rem Dur	Early Start RCS 60406	Early Finish RCS 60406	Anticipated Start	Anticipated Finish	Variance	2006												2007												2008												2009												
										2006				2007				2008				2009				2006				2007				2008				2009																				
										S	O	N	D	J	F	M	A	M	J	J	A	S	O	N	D	J	F	M	A	M	J	J	A	S	O	N	D	J	F	M	A	M	J	J	A	S	O	N	D									
Demo 1																																																										
Demo 1 Soil - Closure FY '06																																																										
Demo 1 Soil: RRA																																																										
00145	Prepare Final Demo 1 RRA Soil Compl of Work Rpt			220*	40*	22DEC05A	01AUG06	22DEC05A	06NOV06	-67	Prepare Final Demo 1 RRA Soil Compl of Work Rpt preparing RCL																																															
00159	Submit Final RRA Demo1 Soil Compl of Work Rpt			0	0		01AUG06		06NOV06	-67	Submit Final RRA Demo1 Soil Compl of Work Rpt Submittal is 20 Days from MOR Approval																																															
Demo 1 Groundwater - Closure FY '07																																																										
Demo 1 Groundwater: Remedy Selection																																																										
31570	EPA Finalize Demo 1 GW Decision Doc/Response Sum			10	10	01MAY06A	16JUN06	01MAY06A	22SEP06	-68	EPA Finalize Demo 1 GW Decision Doc/Response Sum																																															
RD/RA Demo 1: Groundwater Operable Unit																																																										
31572	Demo 1 GW Construct Wells and Pipes: RA(C)			252*	10*	22SEP05A	29DEC06	22SEP05A	22SEP06	66	Demo 1 GW Construct Wells and Pipes: RA(C)																																															
31575	PLACEHOLDER: Demo 1 GW Construct Building: RA(C)			210*	182*	01AUG06*	31MAY07	01AUG06A	31MAY07	0	PLACEHOLDER: Demo 1 GW Construct Building: RA(C)																																															
31574	Start-Up Demo 1 GW: RA(C)	31MAY07		0	0	31MAY07		31MAY07		0	Start-Up Demo 1 GW: RA(C) Start Up subject to change pending finalization of building contract.																																															
J-1 Range																																																										
J-1 Range Soil																																																										
J-1 Range Soil: Remedial Investigation																																																										
PW1871	PLACEHOLDER: J1 Data Gap Investig. (if needed)			44	44			26OCT06	29DEC06	0	PLACEHOLDER: J1 Data Gap Investig. (if needed)																																															
02118	Prepare Draft J-1 Soil RI Report			195*	147*	12JUN06	26DEC06	03JUL06A	11APR07	-74	Prepare Draft J-1 Soil RI Report																																															
02119	Submit Draft J-1 Soil RI Report	11APR07		0	0		26DEC06		11APR07	-74	Submit Draft J-1 Soil RI Report																																															
02121	Prepare Final J-1 Soil RI Report			75*	75*	27DEC06	11APR07	12APR07	27JUL07	-75	Prepare Final J-1 Soil RI Report																																															
02123	Submit Final J-1 Soil RI Report			0	0		11APR07		27JUL07	-75	Submit Final J-1 Soil RI Report Submittal is 20 Days from MOR Approval																																															
J-1 Range Soil: Feasibility Study																																																										
02137	Prepare Draft J-1 Soil FS w/ screening analysis			110	110	08JUN07	12OCT07	29JUN07	06DEC07	-37	Prepare Draft J-1 Soil FS w/ screening analysis																																															
02139	Submit Draft J-1 Soil FS w/ screening analysis	06DEC07		0	0		12OCT07		06DEC07	-37	Submit Draft J-1 Soil FS w/ screening analysis																																															
02141	Prepare Final J-1 Soil FS w/ screening analysis			75*	75*	15OCT07	30JAN08	07DEC07	25MAR08	-38	Prepare Final J-1 Soil FS w/ screening analysis																																															
02143	Submit Final J-1 Soil FS w/ screening analysis			0	0		30JAN08		25MAR08	-38	Submit Final J-1 Soil FS w/ screening analysis Submittal is 20 Days from MOR Approval																																															
02166	PLACEHOLDER: J-1 Range Soil: RS/DD			132	132	15OCT07	18APR08	07DEC07	13JUN08	-39	PLACEHOLDER: J-1 Range Soil: RS/DD																																															
J-1 Range Groundwater																																																										
J-1 Range GW: Remedial Invest./Feasibility Study																																																										
02163	Implement J-1 Southeast GW Field Program			672*	70*	30APR04A	09AUG06	30APR04A	20DEC06	-91	Implement J-1 Southeast GW Field Program ASSUMES: (2) wells remaining P-37 and P-38 real estate access will be in place by 1NOV06.																																															
02165	Validate J-1 Southeast GW Data			694*	92*	30APR04A	11SEP06	30APR04A	23JAN07	-91	Validate J-1 Southeast GW Data																																															
10066	Prepare Draft J-1 Southeast GW RI/FS Report			250	250	13MAR06A	18APR07	24JAN07	21JAN08	-190	Prepare Draft J-1 Southeast GW RI/FS Report																																															

Start Date 01JAN06
 Finish Date 20DEC69
 Data Date 10SEP06
 Run Date 13SEP06 17:10

U159
 Sheet 1 of 11
 RCS - by Area w/TARGET bars
 as of 10SEP06



milestone colors

- Milestone > 90 days Out
- Milestone < 90 days Out

Activity ID	Activity Description	Proposed Enforceable Milestone	Orig Dur	Rem Dur	Early Start RCS 60406	Early Finish RCS 60406	Anticipated Start	Anticipated Finish	Variance	2006												2007												2008												2009																																																																			
										S				O				N				D				J				F				M				A				M				J				J				A				S				O				N				D				J				F				M				A				M				J				J				A				S				O			
10070	Submit Draft J-1 Southeast GW RI/FS Report	21JAN08	0	0		18APR07		21JAN08	-190																									* Submit Draft J-1 Southeast GW RI/FS Report Assumes access will be in place by Nov06.																																																																															
10071	Prepare Final J-1 Southeast GW RI/FS Report		75*	75*	19APR07	02AUG07	22JAN08	06MAY08	-191																									Prepare Final J-1 Southeast GW RI/FS Report																																																																															
10090	Submit Final J-1 Southeast GW RI/FS Report		0	0		02AUG07		06MAY08	-191																									* Submit Final J-1 Southeast GW RI/FS Report Submittal is 20 Days from MOR Approval																																																																															
10116	Prepare Draft J-1 North GW RI/FS Report		244*	117*	13MAR06A	06DEC06	13MAR06A	28FEB07	-57	Prepare Draft J-1 North GW RI/FS Report																																																																																																							
10120	Submit Draft J-1 North GW RI/FS Report	28FEB07	0	0		06DEC06		28FEB07	-57													* Submit Draft J-1 North GW RI/FS Report																																																																																											
10121	Prepare Final J-1 North GW RI/FS Report		75*	75*	07DEC06	23MAR07	01MAR07	14JUN07	-58													Prepare Final J-1 North GW RI/FS Report																																																																																											
10140	Submit Final J-1 North GW RI/FS Report		0	0		23MAR07		14JUN07	-58													* Submit Final J-1 North GW RI/FS Report Submittal is 20 Days from MOR Approval																																																																																											
02164	PLACEHOLDER: J-1 Range GW: RS/DD		132	132	10MAY07	13NOV07	12FEB08	18AUG08	-193													PLACEHOLDER: J-1 Range GW: RS/DD																																																																																											
02174	PLACEHOLDER: J-1 Range GW: RD		260	260	03AUG07	06AUG08	07MAY08	18MAY09	-196													PLACEHOLDER: J-1 Range GW: RD																																																																																											
02184	PLACEHOLDER: J-1 Range GW: RA(C)		303	303	07AUG08	09OCT09	19MAY09	30JUL10	-202																									PLACEHOLDER: J-1 Range GW: RA(C)																																																																															
J-1 Range Groundwater: RRA																																																																																																																	
02185	PLACEHOLDER: Prepare Draft J-1 Southeast GW RRA		61	61	01NOV06*	13MAR07	02OCT06*	29DEC06	50	PLACEHOLDER: Prepare Draft J-1 Southeast GW RRA																																																																																																							
02186	PLACEHOLDER: Submit Draft J-1 Southeast GW RRA	29DEC06	0	0		13MAR07		29DEC06	50													* PLACEHOLDER: Submit Draft J-1 Southeast GW RRA Assumes: (1) on-site extraction well																																																																																											
02187	PLACEHOLDER Design J-1 GW RRA System		112	112	14MAR07	03JAN08	23JAN07	29JUN07	127													PLACEHOLDER Design J-1 GW RRA System Assumes: design starts with agency comments;																																																																																											
02191	PLACEHOLDER Construct J-1 GW RRA System		132	132	04JAN08	17NOV08	04SEP07*	13MAR08	172													PLACEHOLDER Construct J-1 GW RRA System Assumes: (2) month procurement.																																																																																											
02188	System Start Up: J-1 GW RRA System		0	0		17NOV08		13MAR08	172													* System Start Up: J-1 GW RRA System																																																																																											
J-2 Range																																																																																																																	
J-2 Range Soil																																																																																																																	
J-2 Range Soil: Remedial Investigation																																																																																																																	
PW1614	PLACEHOLDER: J2 Data Gap Investig. (if needed)		66	66			02JAN07	04APR07	0	PLACEHOLDER: J2 Data Gap Investig. (if needed)																																																																																																							
00325	Prepare Draft J-2 Soil RI Report		258*	177*	16MAY06A	31JAN07	16MAY06A	23MAY07	-79	Prepare Draft J-2 Soil RI Report																																																																																																							
00327	Submit Draft J-2 Soil RI Report	23MAY07	0	0		31JAN07		23MAY07	-79													* Submit Draft J-2 Soil RI Report																																																																																											
00329	Prepare Final J-2 Soil RI Report		75*	75*	01FEB07	16MAY07	24MAY07	10SEP07	-80													Prepare Final J-2 Soil RI Report																																																																																											
00331	Submit Final J-2 Soil RI Report		0	0		16MAY07		10SEP07	-80													* Submit Final J-2 Soil RI Report Submittal is 20 Days from MOR Approval																																																																																											
J-2 Range Soil: RRA																																																																																																																	
03213	Prepare Final J-2 Soil RRA Completion of Work Rt		251*	50*	22NOV05A	03JUL06	22NOV05A	21NOV06	-97	Prepare Final J-2 Soil RRA Completion of Work Rt EPA disapproved MOR on 5/24/06.																																																																																																							
03214	Submit Final J-2 Soils RRA Completion of Work Rt		0	0		03JUL06		21NOV06	-97	* Submit Final J-2 Soils RRA Completion of Work Rt Submittal is 20 Days from MOR Approval																																																																																																							
J-2 Range Soil: Feasibility Study																																																																																																																	
00342	Prepare Draft J-2 Soil FS w/ screening analysis		110	110	16JUL07	19NOV07	13AUG07	21JAN08	-42	Prepare Draft J-2 Soil FS w/ screening analysis																																																																																																							
00344	Submit Draft J-2 Soil FS w/ screening analysis	21JAN08	0	0		19NOV07		21JAN08	-42													* Submit Draft J-2 Soil FS w/ screening analysis																																																																																											

Start Date 01JAN06
 Finish Date 20DEC69
 Data Date 10SEP06
 Run Date 13SEP06 17:10

U159
 Sheet 2 of 11
 RCS - by Area w/TARGET bars
 as of 10SEP06

milestone colors
 Milestone > 90 days Out
 Milestone < 90 days Out

Activity ID	Activity Description	Proposed Enforceable Milestone	Orig Dur	Rem Dur	Early Start RCS 60406	Early Finish RCS 60406	Anticipated Start	Anticipated Finish	Variance	2006												2007												2008												2009																											
										S				O				N				D				J				F				M				A				M				J				J				A				S				O				N				D			
00346	Prepare Final J-2 Soil FS w/ screening analysis			75*	75*	20NOV07	05MAR08	22JAN08	06MAY08	-44	[Gantt bar from Dec 2007 to May 2008]																																																Prepare Final J-2 Soil FS w/ screening analysis														
00348	Submit Final J-2 Soil FS w/ screening analysis			0	0		05MAR08		06MAY08	-44	[Milestone star in March 2008]																																																Submit Final J-2 Soil FS w/ screening analysis Submittal is 20 Days from MOR Approval														
00390	PLACEHOLDER: J-2 Range Soil: RS/DD			132	132	20NOV07	23MAY08	22JAN08	28JUL08	-44	[Gantt bar from Jan 2008 to Jul 2008]																																																PLACEHOLDER: J-2 Range Soil: RS/DD														
J-2 Range Groundwater																																																																									
J-2 Range GW: Remedial Invest./Feasibility Study																																																																									
00699	J-2 GW Prepare Draft RI/FS			182*	88*	27APR06A	06DEC06	27APR06A	17JAN07	-28	[Gantt bar from Apr 2006 to Jan 2007]																																																J-2 GW Prepare Draft RI/FS														
00352	Submit Draft J-2 GW RI/FS Report	17JAN07		0	0		06DEC06		17JAN07	-28	[Milestone star in Jan 2007]																																																Submit Draft J-2 GW RI/FS Report														
00353	Prepare Final J-2 GW RI/FS Report			75*	75*	07DEC06	23MAR07	18JAN07	03MAY07	-29	[Gantt bar from Jan 2007 to May 2007]																																																Prepare Final J-2 GW RI/FS Report														
00355	Submit Final J-2 GW RI/FS Report			0	0		23MAR07		03MAY07	-29	[Milestone star in May 2007]																																																Submit Final J-2 GW RI/FS Report Submittal is 20 Days from MOR Approval														
00367	PLACEHOLDER: J-2 Range GW: RS/DD			132	132	22JAN07	25JUL07	02MAR07	06SEP07	-30	[Gantt bar from Mar 2007 to Sep 2007]																																																PLACEHOLDER: J-2 Range GW: RS/DD														
00368	PLACEHOLDER: J-2 Range GW: RD			169	169	26FEB07	19OCT07	06APR07	06DEC07	-32	[Gantt bar from Apr 2007 to Dec 2007]																																																PLACEHOLDER: J-2 Range GW: RD														
00369	PLACEHOLDER: J-2 Range GW: RA(C)			306	306	22OCT07	30DEC08	07DEC07	24FEB09	-38	[Gantt bar from Dec 2007 to Feb 2009]																																																PLACEHOLDER: J-2 Range GW: RA(C)														
J-2 Range Groundwater: RRA																																																																									
00403	Construction J-2 GW RRA Sys (N.Plume only)			240*	0*	22SEP05A	29DEC06	22SEP05A	06SEP06A	78	[Gantt bar from Sep 2005 to Sep 2006]																																																Construction J-2 GW RRA Sys (N.Plume only)														
00404	System Start Up: J-2 GW RRA Sys (N.Plume only)	29DEC06	Y	0	0		29DEC06*		06SEP06A	78	[Milestone star in Sep 2006]																																																System Start Up: J-2 GW RRA Sys (N.Plume only)														
J-3 Range																																																																									
J-3 Range Soils - Closure FY '07																																																																									
J-3 Range Soil: Remedial Investigation																																																																									
02221	Prepare Final J-3 Soil RI Report			185*	61*	16MAR06A	29AUG06	16MAR06A	07DEC06	-68	[Gantt bar from Mar 2006 to Dec 2006]																																																Prepare Final J-3 Soil RI Report awaiting agency comments (overdue 05APR06)														
02223	Submit Final J-3 Soil RI Report			0	0		29AUG06		07DEC06	-68	[Milestone star in Dec 2006]																																																Submit Final J-3 Soil RI Report Submittal is 20 Days from MOR Approval														
02300	PLACEHOLDER: J-3 Range Soil: FS			184*	184*	12JUL06	04APR07	08NOV06	01AUG07	-83	[Gantt bar from Nov 2006 to Aug 2007]																																																PLACEHOLDER: J-3 Range Soil: FS														
02302	PLACEHOLDER: J-3 Range Soil: RD			95	95	11JAN07	23MAY07	08MAY07	20SEP07	-83	[Gantt bar from May 2007 to Sep 2007]																																																PLACEHOLDER: J-3 Range Soil: RD														
02301	PLACEHOLDER: J-3 Range Soil: RS/DD			132	132	11JAN07	16JUL07	08MAY07	14NOV07	-84	[Gantt bar from May 2007 to Nov 2007]																																																PLACEHOLDER: J-3 Range Soil: RS/DD														
02304	PLACEHOLDER: J-3 Range Soil: RA(C)			155	155	24MAY07	31DEC07	21SEP07	02MAY08	-87	[Gantt bar from Sep 2007 to May 2008]																																																PLACEHOLDER: J-3 Range Soil: RA(C)														
J-3 Range Groundwater																																																																									
J-3 Range GW: Remedial Invest./Feasibility Study																																																																									
10000	Prepare Draft J-3 GW RI/FS Report			187*	60*	13MAR06A	06DEC06	13MAR06A	06DEC06	0	[Gantt bar from Mar 2006 to Dec 2006]																																																Prepare Draft J-3 GW RI/FS Report														
10002	Submit Draft J-3 GW RI/FS Report	06DEC06		0	0		06DEC06		06DEC06	0	[Milestone star in Dec 2006]																																																Submit Draft J-3 GW RI/FS Report														
10009	Prepare Final J-3 GW RI/FS Report			75*	75*	07DEC06	23MAR07	07DEC06	26MAR07	-1	[Gantt bar from Dec 2006 to Mar 2007]																																																Prepare Final J-3 GW RI/FS Report														
10022	Submit Final J-3 GW RI/FS Report			0	0		23MAR07		26MAR07	-1	[Milestone star in Mar 2007]																																																Submit Final J-3 GW RI/FS Report Submittal is 20 Days from MOR Approval														

milestone colors



- Milestone > 90 days Out
- Milestone < 90 days Out

Activity ID	Activity Description	Proposed Enforceable Milestone	Orig Dur	Rem Dur	Early Start RCS 60406	Early Finish RCS 60406	Anticipated Start	Anticipated Finish	Variance	2006												2007												2008												2009																																																																			
										S				O				N				D				J				F				M				A				M				J				J				A				S				O				N				D				J				F				M				A				M				J				J				A				S				O			
02258	PLACEHOLDER: J-3 Range GW: RS/DD		130	130	29DEC06	29JUN07	29DEC06	03JUL07	-2	[Green bar] PLACEHOLDER: J-3 Range GW: RS/DD																																																																																																							
02259	PLACEHOLDER: J-3 Range GW: RD		134	134	26FEB07	31AUG07	27FEB07	05SEP07	-2	[Green bar] PLACEHOLDER: J-3 Range GW: RD																																																																																																							
02260	PLACEHOLDER: J-3 Range GW: RA(C)		213	213	03SEP07	30JUN08	06SEP07	10JUL08	-7	[Green bar] PLACEHOLDER: J-3 Range GW: RA(C)																																																																																																							
J-3 Range Groundwater: RRA																																																																																																																	
03365	Construct J-3 GW RRA Treatment System		238*	0*	22SEP05A	29DEC06	22SEP05A	01SEP06A	80	Construct J-3 GW RRA Treatment System																																																																																																							
03366	Start Up J-3 GW RRA Treatment System	29DEC06	Y	0	0	29DEC06*		01SEP06A	80	Start Up J-3 GW RRA Treatment System																																																																																																							
L Range																																																																																																																	
L Range Soils - Closure FY '06																																																																																																																	
L Range Soil: Remedial Investigation																																																																																																																	
LR000	PLACEHOLDER: MEC Density Investigation L Range		47*	47*			10OCT06	15DEC06	0	[Green bar] PLACEHOLDER: MEC Density Investigation L Range																																																																																																							
02316	Prepare Final L Soil RI Report		293*	107*	14DEC05A	29AUG06	14DEC05A	13FEB07	-114	[Green bar] Prepare Final L Soil RI Report FS is not required since soil contaminants are expected to pose no significant risk. RCL in preparation Date may change pending UXO evaluation/field wk.																																																																																																							
02317	Submit Final L Soil RI Report		0	0		29AUG06		13FEB07	-114	[Green bar] Submit Final L Soil RI Report Submittal is 20 Days from MOR Approval																																																																																																							
L Range Groundwater - Closure FY '07																																																																																																																	
L Range Groundwater: Remedial Investigation																																																																																																																	
0622	Prepare Final L GW Risk Assessment Report		135*	54*	16MAY06A	29AUG06	16MAY06A	28NOV06	-61	[Green bar] Prepare Final L GW Risk Assessment Report RCL in preparation																																																																																																							
0624	Submit Final L GW Risk Assessment Report		0	0		29AUG06		28NOV06	-61	[Green bar] Submit Final L GW Risk Assessment Report																																																																																																							
L-Range Groundwater Feasibility Study																																																																																																																	
0703	Prepare Draft L GW FS (if needed)		121*	121*	27JUN06	20DEC06	30OCT06	23APR07	-85	[Green bar] Prepare Draft L GW FS (if needed)																																																																																																							
0705	Submit Draft L GW FS	23APR07	0	0		20DEC06		23APR07	-85	[Green bar] Submit Draft L GW FS																																																																																																							
0724	Prepare Final L GW FS		75*	75*	21DEC06	06APR07	24APR07	08AUG07	-86	[Green bar] Prepare Final L GW FS																																																																																																							
0726	Submit Final L GW FS		0	0		06APR07		08AUG07	-86	[Green bar] Submit Final L GW FS Submittal is 20 Days from MOR Approval																																																																																																							
0727	PLACEHOLDER: GW L-Range RSDD		151	151	01FEB07	31AUG07	06JUN07	11JAN08	-89	[Green bar] PLACEHOLDER: GW L-Range RSDD																																																																																																							
Long Term Monitoring Sampling Program																																																																																																																	
00289	Prepare Final L Interim GW Monitoring Plan		149*	0*	21DEC05A	01AUG06	21DEC05A	25JUL06A	5																																																																																																								
00291	Submit Final L Interim GW Monitoring Plan		0	0		01AUG06		25JUL06A	5																																																																																																								
Central Impact Area																																																																																																																	
CIA Soil																																																																																																																	
CIA Soil: Remedial Investigation																																																																																																																	
03011	Field Investigations Soil FI		97	26	19NOV03A	11JUL06	19NOV03A	24NOV06	-94	[Green bar] Field Investigations Soil FI																																																																																																							
03014	Lab Analysis/Data Validation Soil FI		144	70	26DEC03A	12SEP06	26DEC03A	20DEC06	-68	[Green bar] Lab Analysis/Data Validation Soil FI																																																																																																							

Activity ID	Activity Description	Proposed Enforceable Milestone	Orig Dur	Rem Dur	Early Start RCS 60406	Early Finish RCS 60406	Anticipated Start	Anticipated Finish	Variance	2006												2007												2008												2009																																																																			
										S				O				N				D				J				F				M				A				M				J				J				A				S				O				N				D				J				F				M				A				M				J				J				A				S				O			
00261	Prepare Draft CIA Soil RI Report		735*	114*	04APR04A	23FEB07	04APR04A	23FEB07	0	Prepare Draft CIA Soil RI Report																																																																																																							
00262	Submit Draft Final CIA Soil RI Report	23FEB07	0	0		23FEB07		23FEB07	0	Submit Draft Final CIA Soil RI Report																																																																																																							
00263	Prepare Final CIA Soil RI Report		75	75	26FEB07	08JUN07	26FEB07	11JUN07	-1	Prepare Final CIA Soil RI Report																																																																																																							
00292	Submit Final CIA Soil RI Report		0	0		08JUN07		11JUN07	-1	Submit Final CIA Soil RI Report Submittal is 20 Days from MOR Approval																																																																																																							
22146	Prepare Final Post Screen Invst CIA SourceAreaWP		218*	0*	16AUG05A	06JUL06	16AUG05A	28JUN06A	5																																																																																																								
22148	Submit Final Post Screen Invest CIA SourceAreaWP		0	0		06JUL06		28JUN06A	5																																																																																																								
22150	PLACEHOLDER: Post Screening Invst CIA Field Prgm		227*	52*	03JAN06A	11DEC06	03JAN06A	24NOV06	11	PLACEHOLDER: Post Screening Invst CIA Field Prgm																																																																																																							
CIA Soil: RRA Targets 23/42																																																																																																																	
03122	Prepare Final Draft CIA Compl of Wk Target 23/42		310*	45*	19AUG05A	07AUG06	19AUG05A	14NOV06	-68	Prepare Final Draft CIA Compl of Wk Target 23/42 awaiting CRM (overdue 6/20/06)																																																																																																							
03123	Submit Final CIA Completion of WkRt Target 23/42		0	0		07AUG06		14NOV06	-68	Submit Final CIA Completion of WkRt Target 23/42 Submittal is 20 Days from MOR Approval																																																																																																							
CIA Groundwater																																																																																																																	
CIA Groundwater: Remedial Investigation																																																																																																																	
02030	Prepare Final CIA GW Report		667*	35*	19MAR04A	19SEP06	19MAR04A	30OCT06	-28	Prepare Final CIA GW Report awaiting DEP comments and CRM (overdue 8/15/06)																																																																																																							
02035	Submit Final CIA GW Rpt Addendum (TM 01-6)		0	0		19SEP06		30OCT06	-28	Submit Final CIA GW Rpt Addendum (TM 01-6) EPA letter 11/2/05 removed ENF deadline.																																																																																																							
Long Term Monitoring Sampling Program																																																																																																																	
LT3020	Prepare Final CIA Interim GW Monitoring Plan		204*	45*	25JAN06A	29AUG06	25JAN06A	14NOV06	-52	Prepare Final CIA Interim GW Monitoring Plan preparing RCL to DEP comments																																																																																																							
LT3022	Submit Final CIA Interim GW Monitoring Plan		0	0		29AUG06		14NOV06	-52	Submit Final CIA Interim GW Monitoring Plan																																																																																																							
CIA Soil & GW: Feasibility Study																																																																																																																	
22110	CIA Soil & GW FS Screening Report Preparation		410*	56*	14APR05A	30NOV06	14APR05A	30NOV06	0	CIA Soil & GW FS Screening Report Preparation																																																																																																							
22120	Submit Draft CIA Soil & GW FS Screening Report	30NOV06	0	0		30NOV06		30NOV06	0	Submit Draft CIA Soil & GW FS Screening Report Schedule to be revised after scoping mt w/Agency A TBD date was requested on 9/19/05.																																																																																																							
22130	Prepare Final CIA Draft Soil & GW FS Screen Rpt		75	75	01DEC06	19MAR07	01DEC06	20MAR07	-1	Prepare Final CIA Draft Soil & GW FS Screen Rpt																																																																																																							
22140	Submit Final CIA Soil & GW FS Screening Report		0	0		19MAR07		20MAR07	-1	Submit Final CIA Soil & GW FS Screening Report Submittal is 20 days from MOR Approval																																																																																																							
22398	Model FS Screening Report Scenarios		124	153	16JUN03A	15JAN07	16JUN03A	19APR07	-67	Model FS Screening Report Scenarios Schedule to be revised after scoping meeting with Agencies.																																																																																																							
22210	Prepare Draft CIA Soil & GW FS		135	135	27FEB07	04SEP07	23FEB07	04SEP07	0	Prepare Draft CIA Soil & GW FS																																																																																																							
22220	Submit Draft CIA Soil & GW FS	04SEP07	0	0		04SEP07		04SEP07	0	Submit Draft CIA Soil & GW FS																																																																																																							
22230	Prepare Final CIA Soil & GW FS		105	105	05SEP07	01FEB08	05SEP07	05FEB08	-2	Prepare Final CIA Soil & GW FS																																																																																																							
22240	Submit Final CIA Soil & GW FS		0	0		01FEB08		05FEB08	-2	Submit Final CIA Soil & GW FS Submittal is 20 Days from MOR Approval																																																																																																							
32579	PLACEHOLDER: CIA GW: RD		261	261	04FEB08	06FEB09	06FEB08	18FEB09	-7	PLACEHOLDER: CIA GW: RD																																																																																																							
32580	PLACEHOLDER: CIA GW: RA(C)		427	427	09FEB09	05OCT10	19FEB09	27OCT10	-15	PLACEHOLDER: CIA GW: RA(C)																																																																																																							

Start Date 01JAN06
 Finish Date 20DEC09
 Data Date 10SEP06
 Run Date 13SEP06 17:10

U159
 Sheet 5 of 11
 RCS - by Area w/TARGET bars
 as of 10SEP06

milestone colors
 Milestone > 90 days Out
 Milestone < 90 days Out

Activity ID	Activity Description	Proposed Enforceable Milestone	Orig Dur	Rem Dur	Early Start RCS 60406	Early Finish RCS 60406	Anticipated Start	Anticipated Finish	Variance	2006												2007												2008												2009												
										2006				2007				2008				2009				2006				2007				2008				2009																				
										S	O	N	D	J	F	M	A	M	J	J	A	S	O	N	D	J	F	M	A	M	J	J	A	S	O	N	D	J	F	M	A	M	J	J	A	S	O	N	D									
CIA Soil & GW: Remedy Selection																																																										
32505	CIA Soil & GW RS Plan Scoping Meeting	05SEP07		1	1	05SEP07	05SEP07	05SEP07	05SEP07	0	CIA Soil & GW RS Plan Scoping Meeting																																															
32510	Prepare Draft CIA Soil & GW Remedy Selection Pln			60	60	06SEP07	29NOV07	06SEP07	03DEC07	-2	Prepare Draft CIA Soil & GW Remedy Selection Pln																																															
32520	Revise Draft CIA Soil & GW Remedy Selection Plan			75	75	30NOV07	17MAR08	04DEC07	20MAR08	-3	Revise Draft CIA Soil & GW Remedy Selection Plan																																															
32530	Submit CIA Soil & GW Remedy Selection Plan	20MAR08		0	0		17MAR08		20MAR08	-3	Submit CIA Soil & GW Remedy Selection Plan																																															
32540	CIA Soil & GW Public Comment Period for RS			21	21	18MAR08	15APR08	21MAR08	18APR08	-3	CIA Soil & GW Public Comment Period for RS																																															
32550	Draft CIA Soil & GW Decision Doc/ Resp Summary			64	64	16APR08	15JUL08	21APR08	21JUL08	-4	Draft CIA Soil & GW Decision Doc/ Resp Summary																																															
32560	EPA Prepare CIA Final Draft Dec Doc/Response Sum			20	20	16JUL08	12AUG08	22JUL08	18AUG08	-4	EPA Prepare CIA Final Draft Dec Doc/Response Sum																																															
32570	EPA Submit CIA Final Decision Doc/ Response Sum			0	0		12AUG08		18AUG08	-4	EPA Submit CIA Final Decision Doc/ Response Sum																																															
32571	PLACEHOLDER: CIA Soil: RD			303	303	07JAN08	10MAR09	09JAN08	20MAR09	-8	PLACEHOLDER: CIA Soil: RD																																															
32578	PLACEHOLDER: CIA Soil: RA(C)			758	758	11MAR09	21FEB12	23MAR09	23MAR12	-23	PLACEHOLDER: CIA Soil: RA(C)																																															

Western Boundary

Western Boundary - Closure FY '06

Western Boundary: Remedial Investigation																																																										
03473	Prepare Western Boundary Draft RI Report			565*	0*	28APR04A	21JUL06	28APR04A	21JUL06A	0																																																
03483	Submit Western Boundary Draft RI Report	21JUL06	Y	0	0		21JUL06		21JUL06A	0																																																
03494	Prepare Final Western Boundary RI Report			95*	61*	24JUL06	07NOV06	24JUL06A	07DEC06	-20	Prepare Final Western Boundary RI Report awaiting agency comments (overdue 8/14/06)																																															
03495	Submit Final Western Boundary RI Report			0	0		07NOV06		07DEC06	-20	Submit Final Western Boundary RI Report Submittal is 20 Days from MOR Approval																																															
03496	PLACEHOLDER: Western Boundary FS			132	132	24JUL06	01FEB07	08NOV06	17MAY07	-74	PLACEHOLDER: Western Boundary FS FS may not be required since contaminants are expected to pose no significant risks.																																															

Northwest Corner

Northwest Corner - Closure FY '07

Northwest Corner: Remedial Investigation																																																										
03446	Prepare Final Northwest Corner RI Rpt (NR)			143	0	16FEB06A	05SEP06	16FEB06A	08SEP06A	-3	Prepare Final Northwest Corner RI Rpt (NR) RCL in preparation for 28Sep06.																																															
03448	Submit Final Northwest Corner RI Rpt (NR)			0	0		05SEP06		08SEP06A	-3	Submit Final Northwest Corner RI Rpt (NR) RI will be finalized as part of the FS.																																															
Long Term Monitoring Sampling Program																																																										
N01520	Prepare Final NWC Interim GW Monitoring Plan			231*	37*	02DEC05A	15AUG06	02DEC05A	01NOV06	-54	Prepare Final NWC Interim GW Monitoring Plan awaiting CRM (overdue 5/15/06)																																															
N01522	Submit Final NWC Interim GW Monitoring Plan			0	0		15AUG06		01NOV06	-54	Submit Final NWC Interim GW Monitoring Plan																																															
NW Corner: Remedial Invest./Feasibility Study																																																										
03450	PLACEHOLDER: Northwest Corner RI/FS Scoping Mtg	12OCT06		1	1	08AUG06	08AUG06	12OCT06	12OCT06	-45	PLACEHOLDER: Northwest Corner RI/FS Scoping Mtg																																															
03451	PLACEHOLDER: Prepare Draft Northwest Corner RI/FS			135	135	09AUG06	22FEB07	13OCT06	26APR07	-45	PLACEHOLDER: Prepare Draft Northwest Corner RI/FS																																															

milestone colors

- Milestone > 90 days Out
- Milestone < 90 days Out

Activity ID	Activity Description	Proposed Enforceable Milestone	Orig Dur	Rem Dur	Early Start RCS 60406	Early Finish RCS 60406	Anticipated Start	Anticipated Finish	Variance	2006												2007												2008												2009																																																																			
										S				O				N				D				J				F				M				A				M				J				J				A				S				O				N				D				J				F				M				A				M				J				J				A				S				O			
03452	PLACEHOLDER: Submit Draft Northwest Corner RIFS			0	0		22FEB07		26APR07	-45													* PLACEHOLDER: Submit Draft Northwest Corner RIFS																																																																																										
03453	PLACEHOLDER: Prepare Final Northwest Corner RIFS			75	75	22FEB07	06JUN07	26APR07	10AUG07	-46													[Green Bar] PLACEHOLDER: Prepare Final Northwest Corner RIFS																																																																																										
03454	PLACEHOLDER: Submit Final Northwest Corner RIFS			0	0		06JUN07		10AUG07	-46													* PLACEHOLDER: Submit Final Northwest Corner RIFS Submittal is 20 Days from MOR Approval																																																																																										
03455	PLACEHOLDER: NWC RSDD			88	88	10MAY07	11SEP07	16JUL07	19NOV07	-47													[Green Bar] PLACEHOLDER: NWC RSDD																																																																																										

Demo 2

Demo 2 Groundwater - Closure FY '07

Long Term Monitoring Sampling Program

D20170	Prepare Final Demo 2 Interim GW Monitoring Plan			225*	21*	17NOV05A	10JUL06	17NOV05A	10OCT06	-64	[Green Bar]	Prepare Final Demo 2 Interim GW Monitoring Plan awaiting MOR approval (overdue 9FEB06)
D20172	Submit Final Demo 2 Interim GW Monitoring Plan			0	0		10JUL06		10OCT06	-64	[Yellow Star]	Submit Final Demo 2 Interim GW Monitoring Plan

Demo 2 GW: Remedial Invest./Feasibility Study

01563	Scoping Meeting for Demo 2 GW RIFS			1	0	22JUN06*	22JUN06	29JUN06A	29JUN06A	-5		
01574	Prepare Draft Demo 2 GW RIFS			111*	62*	23JUN06	21NOV06	30JUN06A	08DEC06	-12	[Green Bar]	Prepare Draft Demo 2 GW RIFS
01577	Submit Draft Demo 2 GW RIFS	08DEC06		0	0		21NOV06		08DEC06	-12	[Yellow Star]	Submit Draft Demo 2 GW RIFS
01578	Prepare Final Demo 2 GW RIFS			75	75	22NOV06	12MAR07	11DEC06	28MAR07	-12	[Green Bar]	Prepare Final Demo 2 GW RIFS
01603	Submit Final Demo 2 GW RIFS			0	0		12MAR07		28MAR07	-12	[Yellow Star]	Submit Final Demo 2 GW RIFS Submittal is 20 Days from MOR Approval

Demo 2 Groundwater: Remedy Selection

01605	GWRS Plan Scoping Meeting			1	1	13FEB07	13FEB07	01MAR07	01MAR07	-11		GWRS Plan Scoping Meeting
01608	Prepare Draft Remedy Selection Plan			30	30	14FEB07	27MAR07	02MAR07	12APR07	-12	[Green Bar]	Prepare Draft Remedy Selection Plan
01609	Revise Draft Remedy Selection Plan			38	38	28MAR07	18MAY07	13APR07	06JUN07	-12	[Green Bar]	Revise Draft Remedy Selection Plan
01611	Submit Remedy Selection Plan	06JUN07		0	0		18MAY07		06JUN07	-12	[Yellow Star]	Submit Remedy Selection Plan
01613	Public Comment Period			21	21	21MAY07	18JUN07	07JUN07	06JUL07	-13	[Green Bar]	Public Comment Period
01615	Draft Decision Doc/ Response Summary	17JUL07		7	7	19JUN07	27JUN07	09JUL07	17JUL07	-13	[Green Bar]	Draft Decision Doc/ Response Summary
01623	EPA Prepare Final Draft Dec Doc/Response Sum			6	6	28JUN07	06JUL07	18JUL07	25JUL07	-13	[Green Bar]	EPA Prepare Final Draft Dec Doc/Response Sum
01624	EPA Submit Final Decision Doc/ Response Summary			0	0		06JUL07		25JUL07	-13	[Yellow Star]	EPA Submit Final Decision Doc/ Response Summary

Gun & Mortar

Gun & Mortar Soils

Gun & Mortar Soils: Remedial Investigation

00606	Prepare Draft G&M GW & Soil RI Workplan			207*	17*	08DEC05A	06JUL06	08DEC05A	03OCT06	-62	[Green Bar]	Prepare Draft G&M GW & Soil RI Workplan
00607	Submit Draft G&M GW & Soil RI Workplan	03OCT06		0	0		06JUL06		03OCT06	-62	[Yellow Star]	Submit Draft G&M GW & Soil RI Workplan
00608	Prepare Final G&M GW & Soil RI Workplan			75	75	07JUL06	23OCT06	04OCT06	23JAN07	-62	[Green Bar]	Prepare Final G&M GW & Soil RI Workplan

milestone colors

- Milestone > 90 days Out
- Milestone < 90 days Out

Activity ID	Activity Description	Proposed Enforceable Milestone	Orig Dur	Rem Dur	Early Start RCS 60406	Early Finish RCS 60406	Anticipated Start	Anticipated Finish	Variance	2006												2007												2008												2009												
										S	O	N	D	J	F	M	A	M	J	J	A	S	O	N	D	J	F	M	A	M	J	J	A	S	O	N	D	J	F	M	A	M	J	J	A	S	O											
Former A Range																																																										
Former A Range - Closure FY '07																																																										
Former A Range: Remedial Investigation																																																										
01586	Prepare Draft Former A Range RI Report			196*	67*	09MAR06A	29SEP06	09MAR06A	15DEC06	-52	Prepare Draft Former A Range RI Report																																															
01587	Submit Draft Former A Range RI Report	15DEC06		0	0		29SEP06		15DEC06	-52	Submit Draft Former A Range RI Report																																															
01588	Prepare Final Former A Range RI Report			75	75	02OCT06	22JAN07	18DEC06	04APR07	-51	Prepare Final Former A Range RI Report																																															
01589	Submit Final Former A Range RI Report			0	0		22JAN07		04APR07	-51	Submit Final Former A Range RI Report Submittal is 20 Days from MOR Approval																																															
01702	PLACEHOLDER: Former A: FSSR/FS			233	233	02OCT06	31AUG07	18DEC06	19NOV07	-53	PLACEHOLDER: Former A: FSSR/FS																																															
01703	PLACEHOLDER: Former A: RSDD			129	129	01JUN07	30NOV07	16AUG07	21FEB08	-56	PLACEHOLDER: Former A: RSDD																																															
Former K Range																																																										
Former K Range - Closure FY '06																																																										
Former K Range: Remedial Investigation																																																										
01551	PLACEHOLDER: Supplemental Field Investigation			14*	4*	26JUN06	01NOV06	25AUG06A	14SEP06	33	PLACEHOLDER: Supplemental Field Investigation (4) drive points completed																																															
01510	Prepare Final Former K Range RI Report			251*	39*	04NOV05A	04DEC06	04NOV05A	03NOV06	19	Prepare Final Former K Range RI Report Note: Draft recommends that NORRA is required, resolving agency comments																																															
01511	Submit Final Former K Range RI Report			0	0		04DEC06		03NOV06	19	Submit Final Former K Range RI Report Submittal is 20 Days from MOR Approval																																															
01720	PLACEHOLDER: Former K: FSSR/FS			331	331	26JUN06	12OCT07	06OCT06	31JAN08	-75	PLACEHOLDER: Former K: FSSR/FS																																															
Long Term Monitoring Sampling Program																																																										
01550	Prepare Final K Range Interim GW Monitoring Plan			242*	61*	21DEC05A	29AUG06	21DEC05A	07DEC06	-68	Prepare Final K Range Interim GW Monitoring Plan awaiting agency comments (overdue 12JAN06)																																															
01552	Submit Final K Range Interim GW Monitoring Plan			0	0		29AUG06		07DEC06	-68	Submit Final K Range Interim GW Monitoring Plan Submittal is 20 days from MOR Approval																																															
Phase II B																																																										
Phase II (b) - Closure FY '06																																																										
Phase II (b): Remedial Investigation																																																										
01560	Prepare Final 2b RI Report			950*	65*	01APR03A	05SEP06	01APR03A	13DEC06	-68	Prepare Final 2b RI Report awaiting agency comments (overdue 4/03)																																															
01570	Submit Final Phase 2b RI Rpt (TM 02-6)			0	0		05SEP06		13DEC06	-68	Submit Final Phase 2b RI Rpt (TM 02-6) Submittal is 20 Days from MOR Approval																																															
Ammunition Supply Point																																																										
Ammunition Supply Point - Closure FY '06																																																										
Ammunition Supply Point: RRA																																																										
00902	Prepare Final ASP RRA Work Plan			75	40	01FEB06A	09AUG06	01FEB06A	06NOV06	-61	Prepare Final ASP RRA Work Plan awaiting RCL approval or CRM (overdue 8MAY06)																																															
00903	Submit Final ASP RRA Work Plan			0	0		09AUG06		06NOV06	-61	Submit Final ASP RRA Work Plan Submittal is 20 Days from MOR Approval																																															
00904	Implement ASP RRA Field Program			6	24	21AUG06	28AUG06	29AUG06A	13OCT06	-32	Implement ASP RRA Field Program Completed soil sampling and installed (2) drive Assumes: (1) MW remains to be installed.																																															
00909	Lab Analysis Data Validation ASP RRA			40	40	21AUG06	15SEP06	06SEP06A	13NOV06	-39	Lab Analysis Data Validation ASP RRA																																															

milestone colors

- Milestone > 90 days Out
- Milestone < 90 days Out

