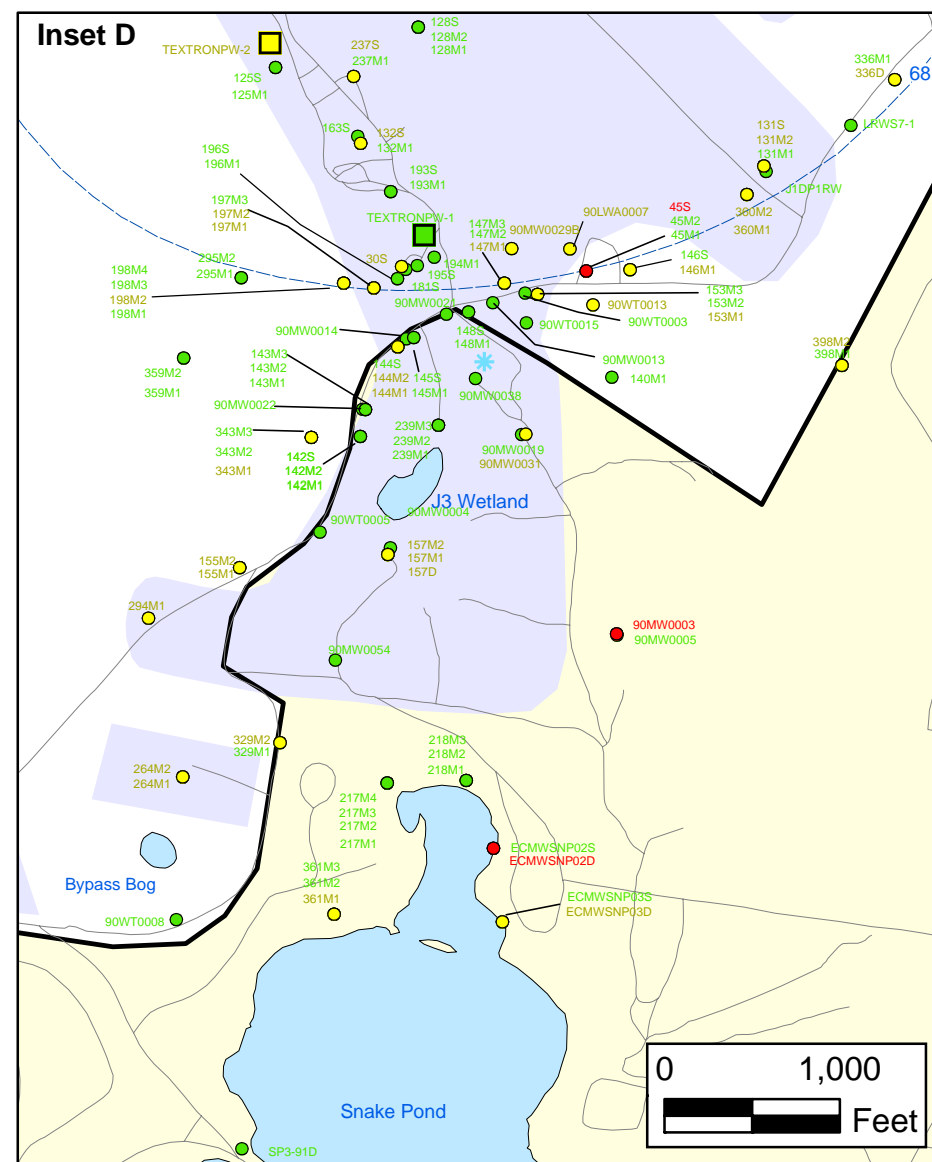
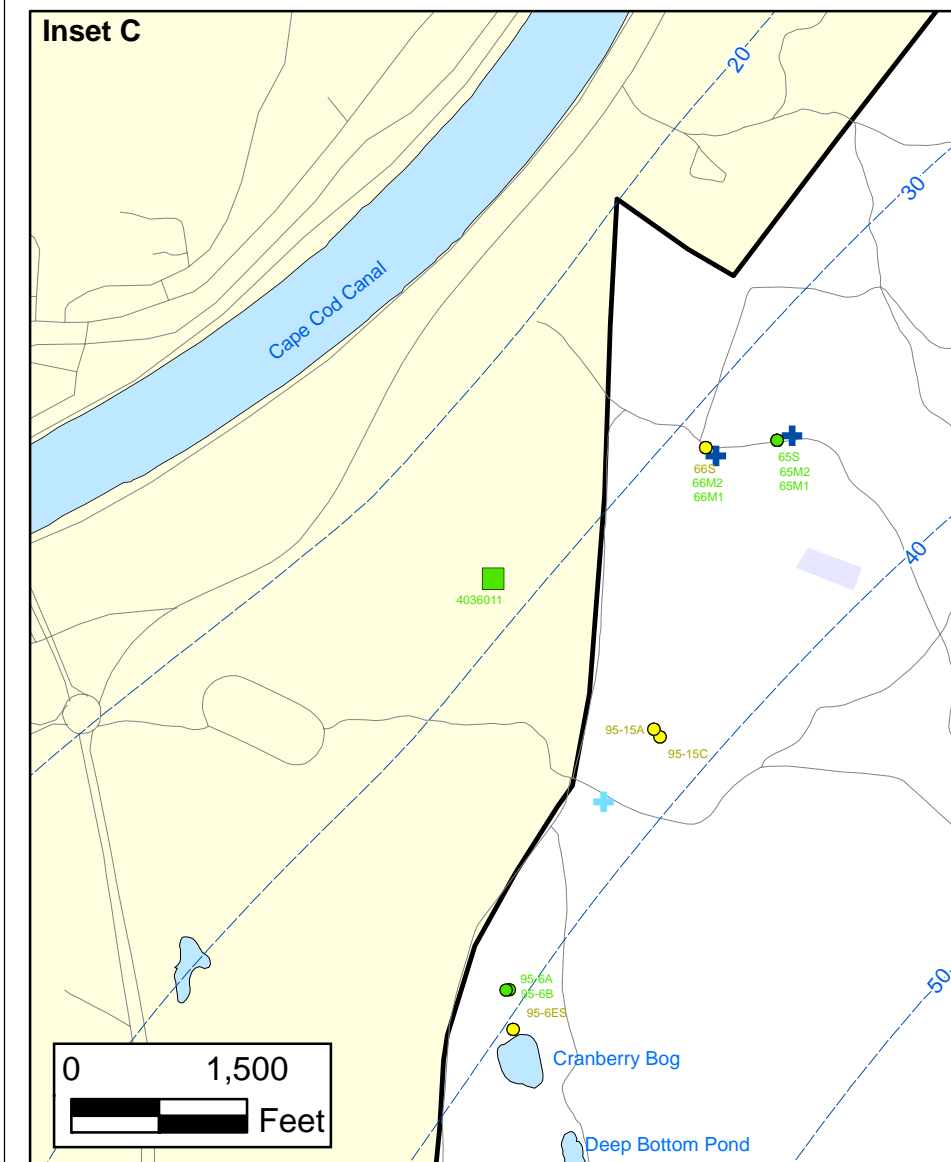
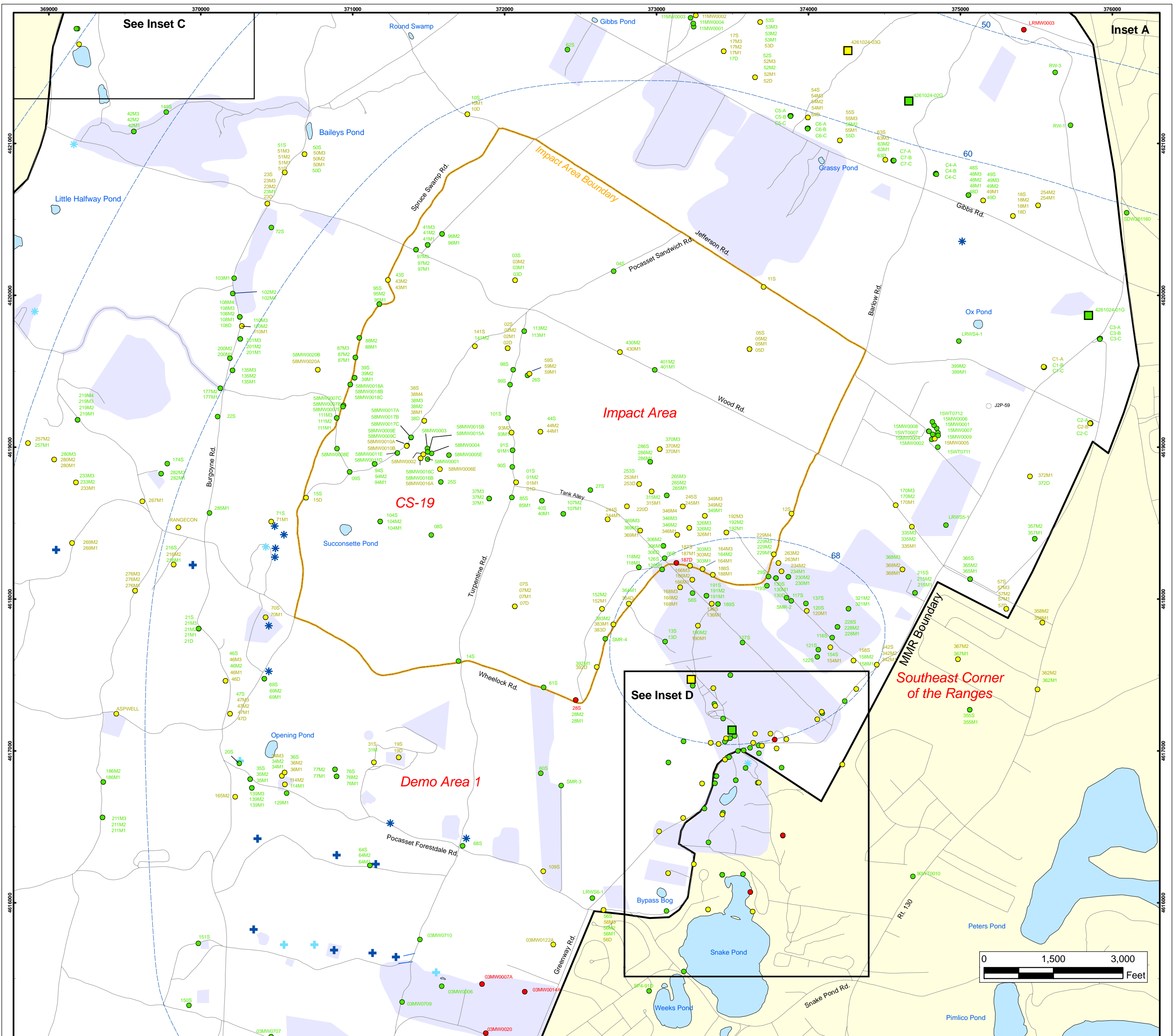


Volatile Organic Compounds (Excluding Chloroform) in Groundwater Compared to Maximum Contaminant Level/Health Advisories
Validated Data as of 03/24/06





Volatile Organic Compounds (Excluding Chloroform) in Groundwater Compared to Maximum Contaminant Level/Health Advisories Validated Data as of 12/22/05

- Validated Detection Greater than or Equal to Maximum Contaminant Level/Health Advisories
- Validated Detection Less than Maximum Contaminant Level/Health Advisories
- Validated Non-Detect
- Data Pending
- Proposed Monitoring Well
- Military Range Areas
- + Current Gun Position
- * Current Mortar Position
- + Old Gun Position
- * Old Mortar Position
- Validated Non-Detect Water Supply Well
- Validated Detection Less than Maximum Contaminant Level/Health Advisories Water Supply Well
- Water Table Contour (Feet NGVD), AMEC, September 2003

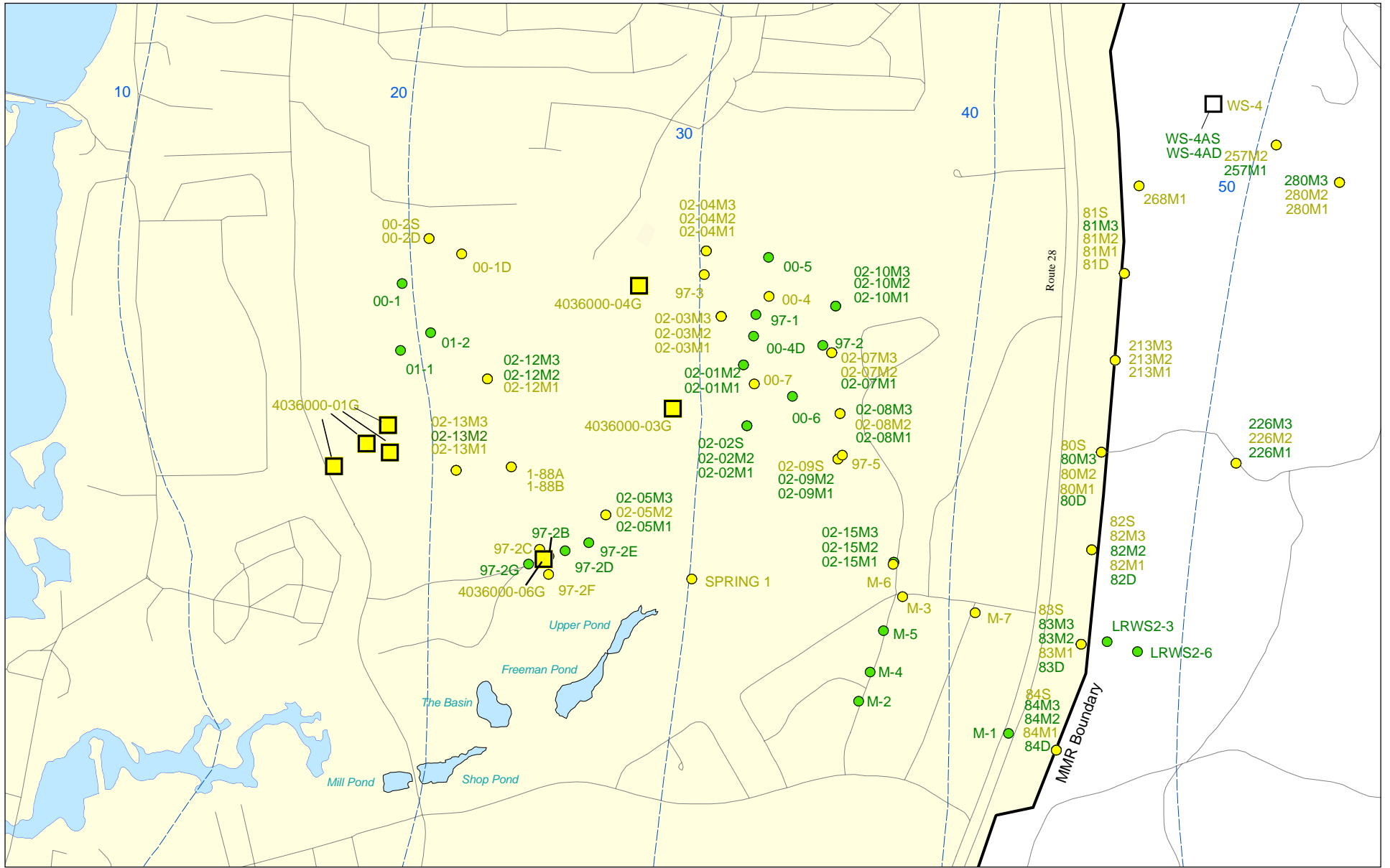
Impact Area Groundwater Study Program

AMEC Earth & Environmental, Inc.
Westford, Massachusetts

Sources & Notes
Base map data from US Geological Survey
7 1/2 minute Topographic Maps
Source: Office of Geographic and
Environmental Information (MassGIS)
Commonwealth of Massachusetts
Executive Office of Environmental Affairs

FIGURE
3

Inset Map



Sources & Notes:
 Base map data from US Geological Survey
 7 1/2 minute Topographic maps.
 Source: Office of Geographic and
 Environmental Information (MassGIS)
 Commonwealth of Massachusetts
 Executive Office of Environmental Affairs

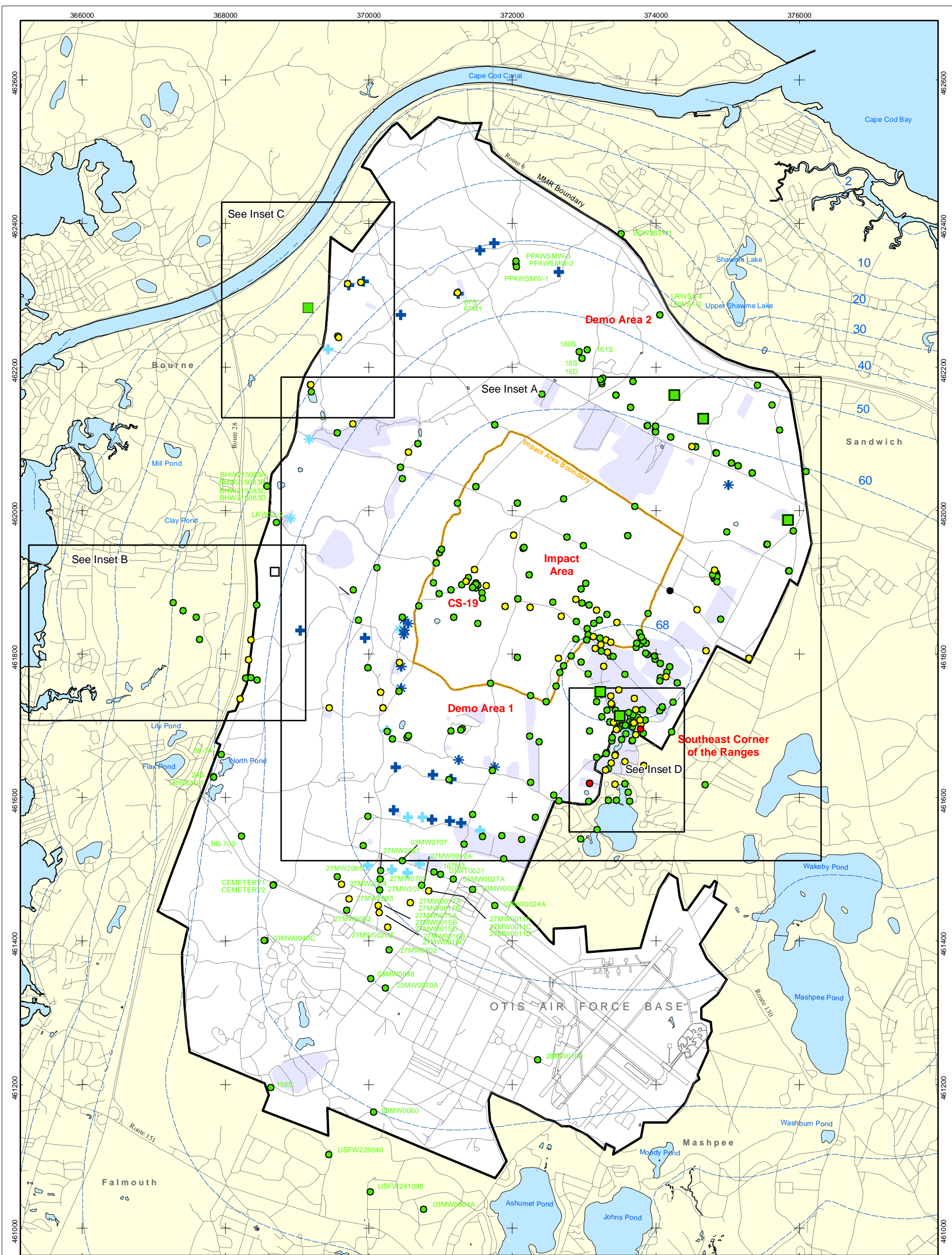
- Validated Detection Less than Maximum Contaminant Level/Health Advisories
- Validated Non-Detect


- Validated Detection Less than Maximum Contaminant Level/Health Advisories Water Supply Well
- Proposed Water Supply Well

--- Water Table Contour (Feet NGVD), AMEC, September 2003

**Volatile Organic Compounds (Excluding Chloroform)
 in Groundwater Compared to Maximum
 Contaminant Level/Health Advisories
 Validated Data as of 03/24/06**



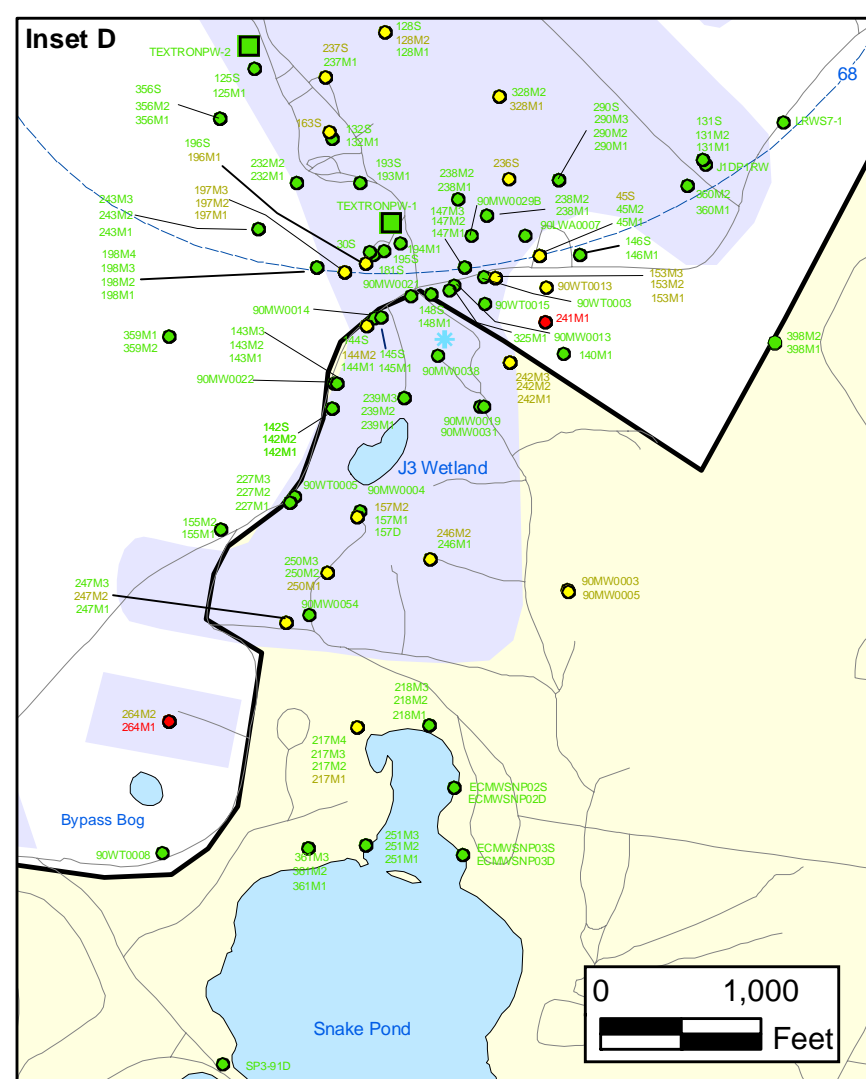
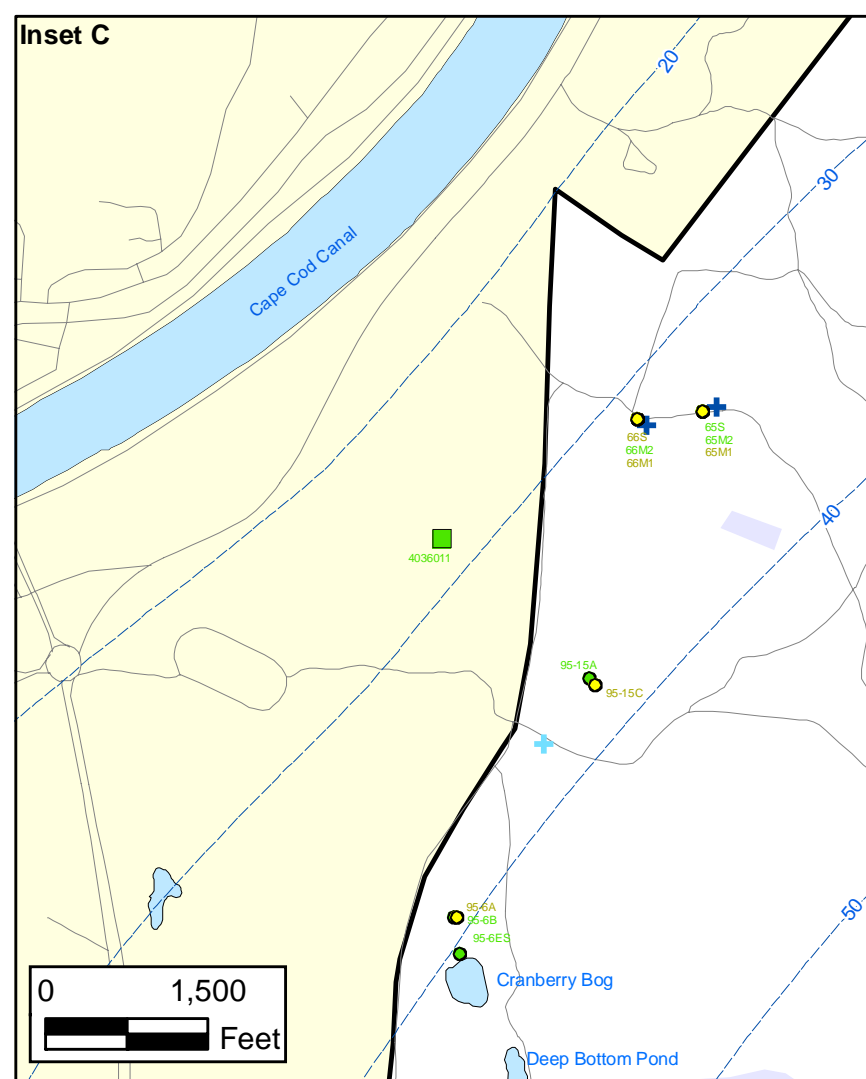
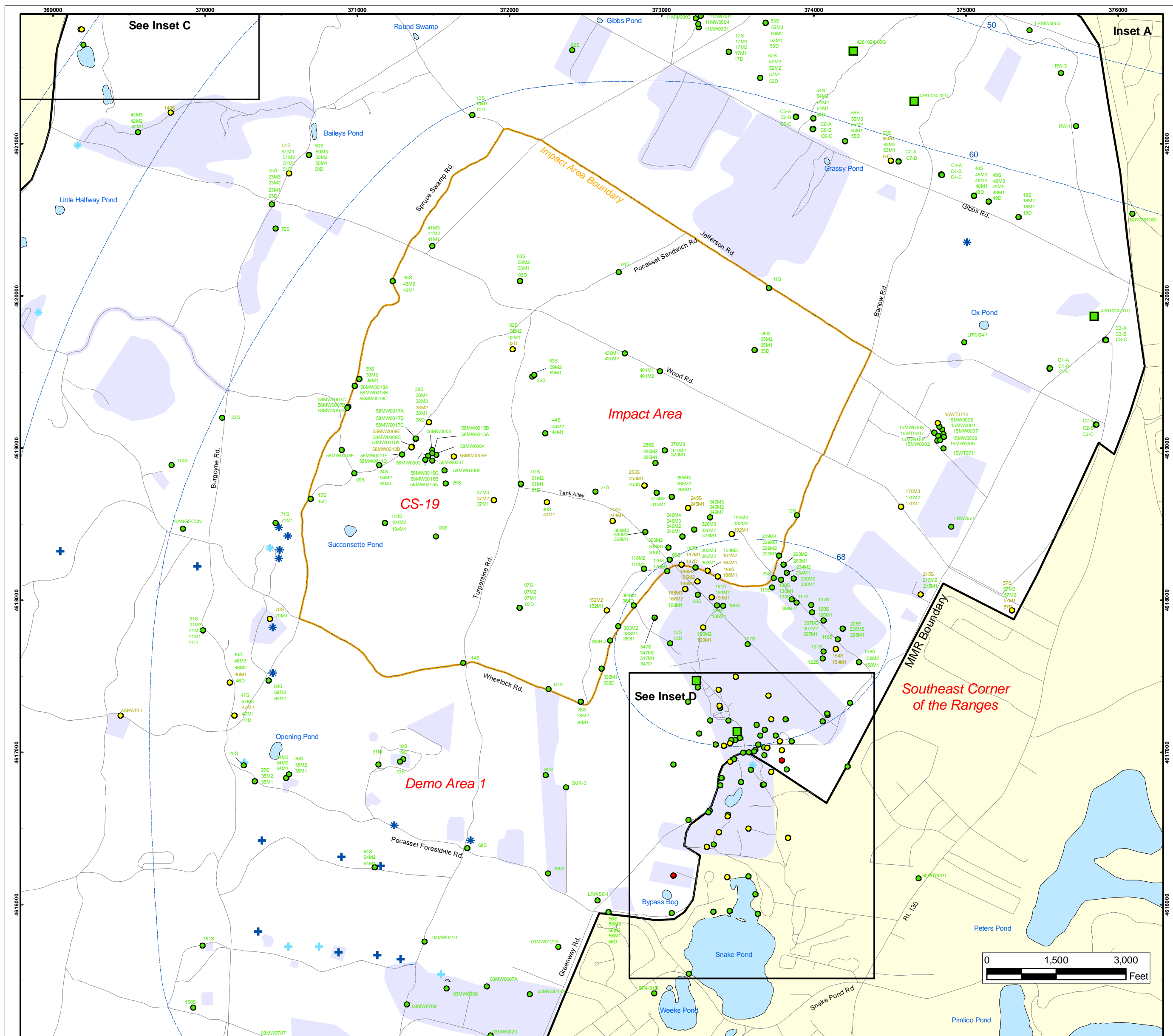


<ul style="list-style-type: none"> ● Validated Detection Greater than or Equal to Maximum Contaminant Level/Health Advisories ● Validated Detection Less than Maximum Contaminant Level/Health Advisories ● Validated Non-Detect ● Data Pending ○ Proposed Monitoring Well 	<ul style="list-style-type: none"> ■ Validated Non-Detect Water Supply Well □ Proposed Water Supply Well 	<ul style="list-style-type: none"> ⊕ Current Gun Position ⊛ Current Mortar Position ⊕ Old Gun Position ⊛ Old Mortar Position 	 <p>0 2,000 4,000 Feet</p>
<ul style="list-style-type: none"> --- Water Table Contour (Feet NGVD) AMEC, September 2003 ■ Military Range Areas 			<p>Sources & Notes Base map data from US Geological Survey 7 1/2 minute Topographic Maps. Source: Office of Geographic and Environmental Information (MassGIS) Commonwealth of Massachusetts Executive Office of Environmental Affairs</p>

**Semi-Volatile Organic Compounds (Excluding BEHP) in Groundwater
Compared to Maximum Contaminant Level/Health Advisories
Validated Data as of 03/24/06**

AMEC Earth & Environmental, Inc.
Westford, Massachusetts

FIGURE
5



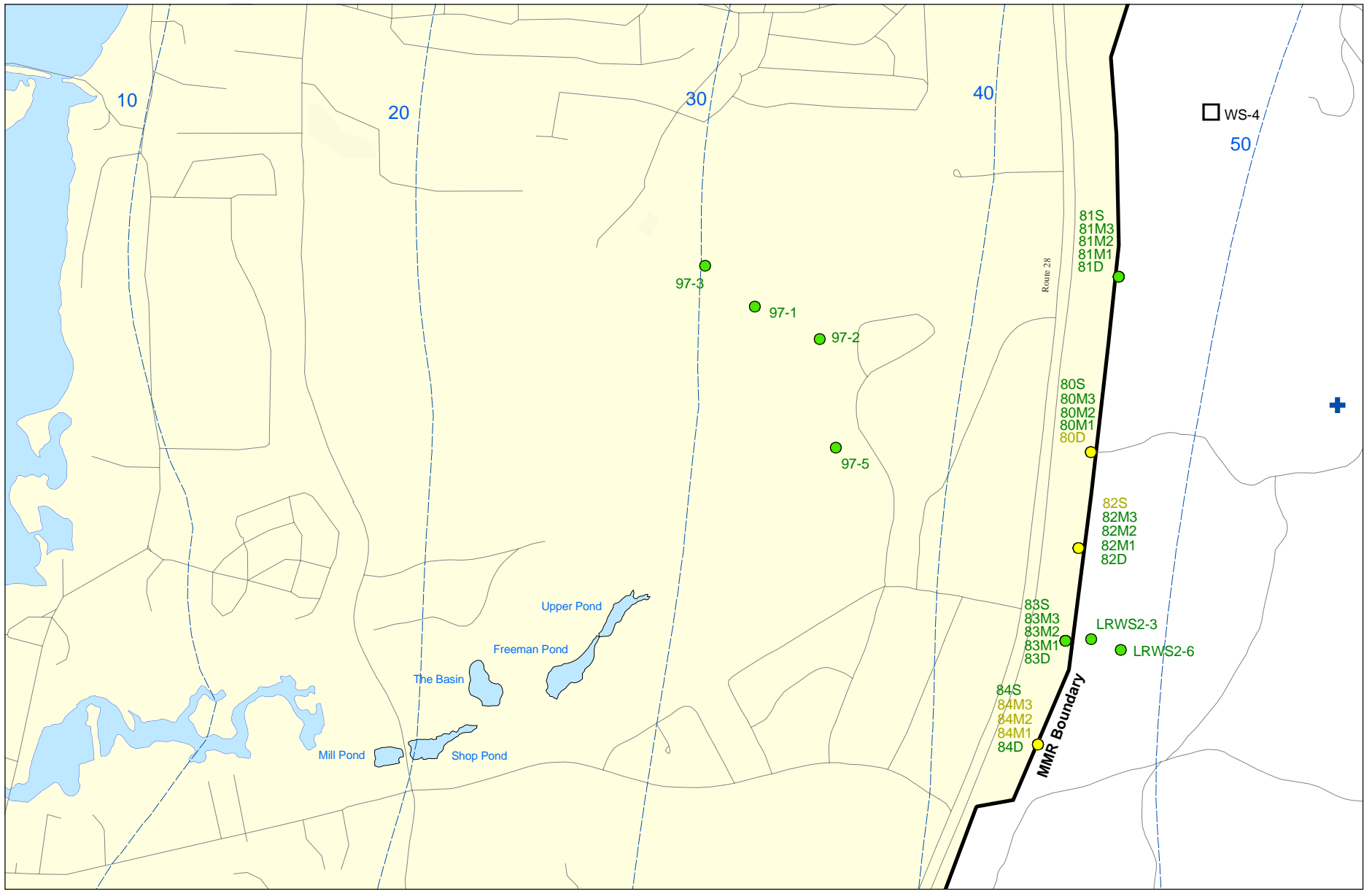
Semi-Volatile Organic Compounds (Excluding BEHP) in Groundwater Compared to Maximum Contaminant Level/Health Advisories Validated Data as of 03/24/06

- Validated Detection Greater than or Equal to Maximum Contaminant Level/Health Advisories
- Validated Detection Less than Maximum Contaminant Level/Health Advisories
- Validated Non-Detect
- Data Pending
- Proposed Monitoring Well
- Military Range Areas
- ★ Current Gun Position
- ★ Current Mortar Position
- ★ Old Gun Position
- ★ Old Mortar Position
- Validated Non-Detect Water Supply Well
- Water Table Contour (Feet NGVD), AMEC, September 2003

Impact Area Groundwater Study Program

AMEC Earth & Environmental, Inc.
Westford, Massachusetts

FIGURE 5
Inset Map

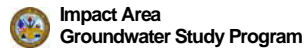


Semi-Volatile Organic Compounds (Excluding BEHP) in Groundwater Compared to Maximum Contaminant Level/Health Advisories
Validated Data as of 03/24/06



Sources & Notes:
Base map data from US Geological Survey
7 1/2 minute Topographic maps.
Source: Office of Geographic and Environmental Information (MassGIS)
Commonwealth of Massachusetts
Executive Office of Environmental Affairs

- Validated Detection Less than Maximum Contaminant Level/Health Advisories
- Validated Non-Detect
- Proposed Water Supply Well
- + Current Gun Position
- Water Table Contour (Feet NGVD), AMEC, September 2003



AMEC Earth & Environmental, Inc.
Westford, Massachusetts

Inset Map B **FIGURE 5**