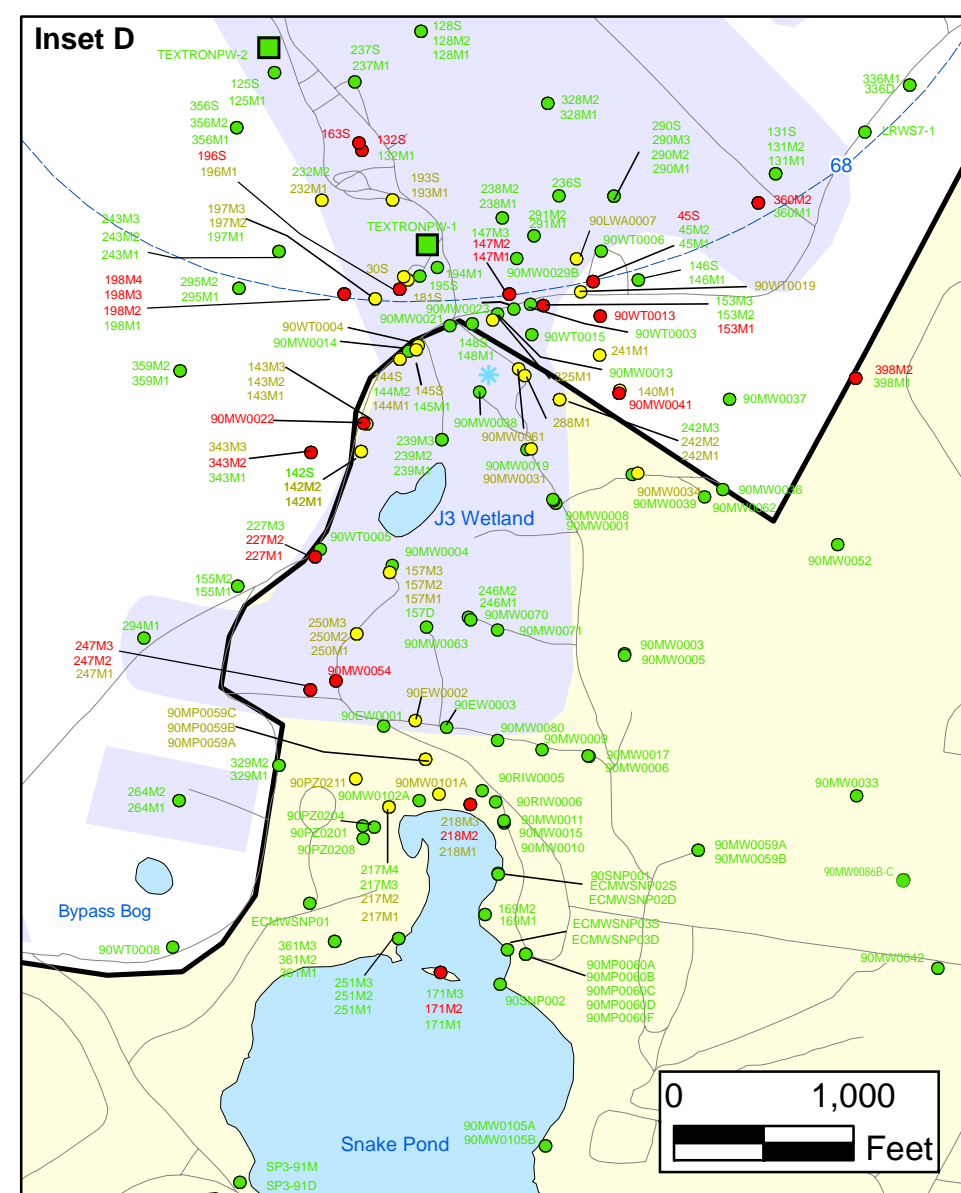
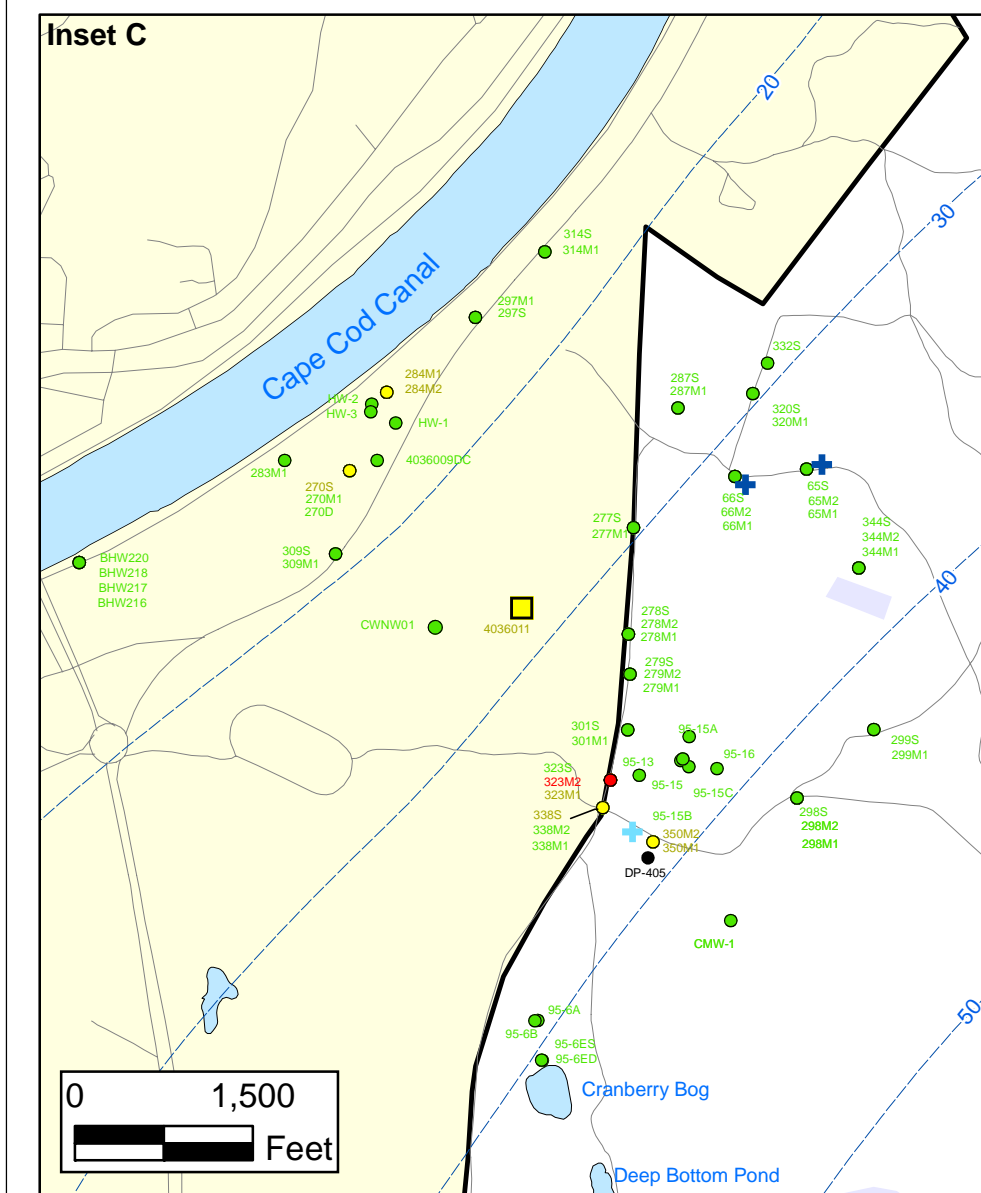
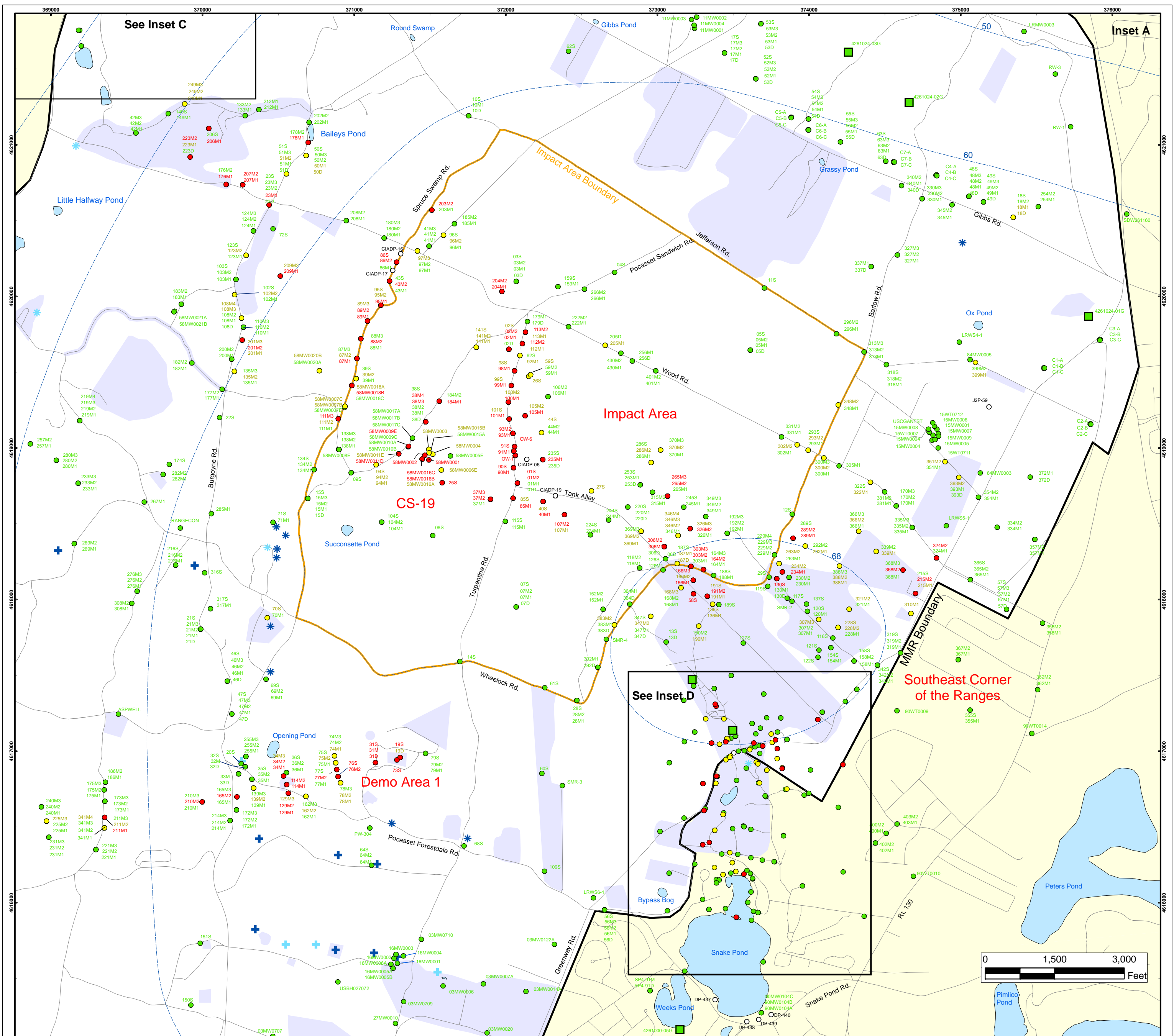


Explosives in Groundwater Compared to Maximum Contaminant Level/Health Advisories
 Validated Data as of 03/24/06

FIGURE 1



Explosives in Groundwater Compared to Maximum Contaminant Level/Health Advisories

Validated Data as of 03/24/06

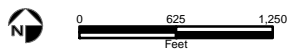
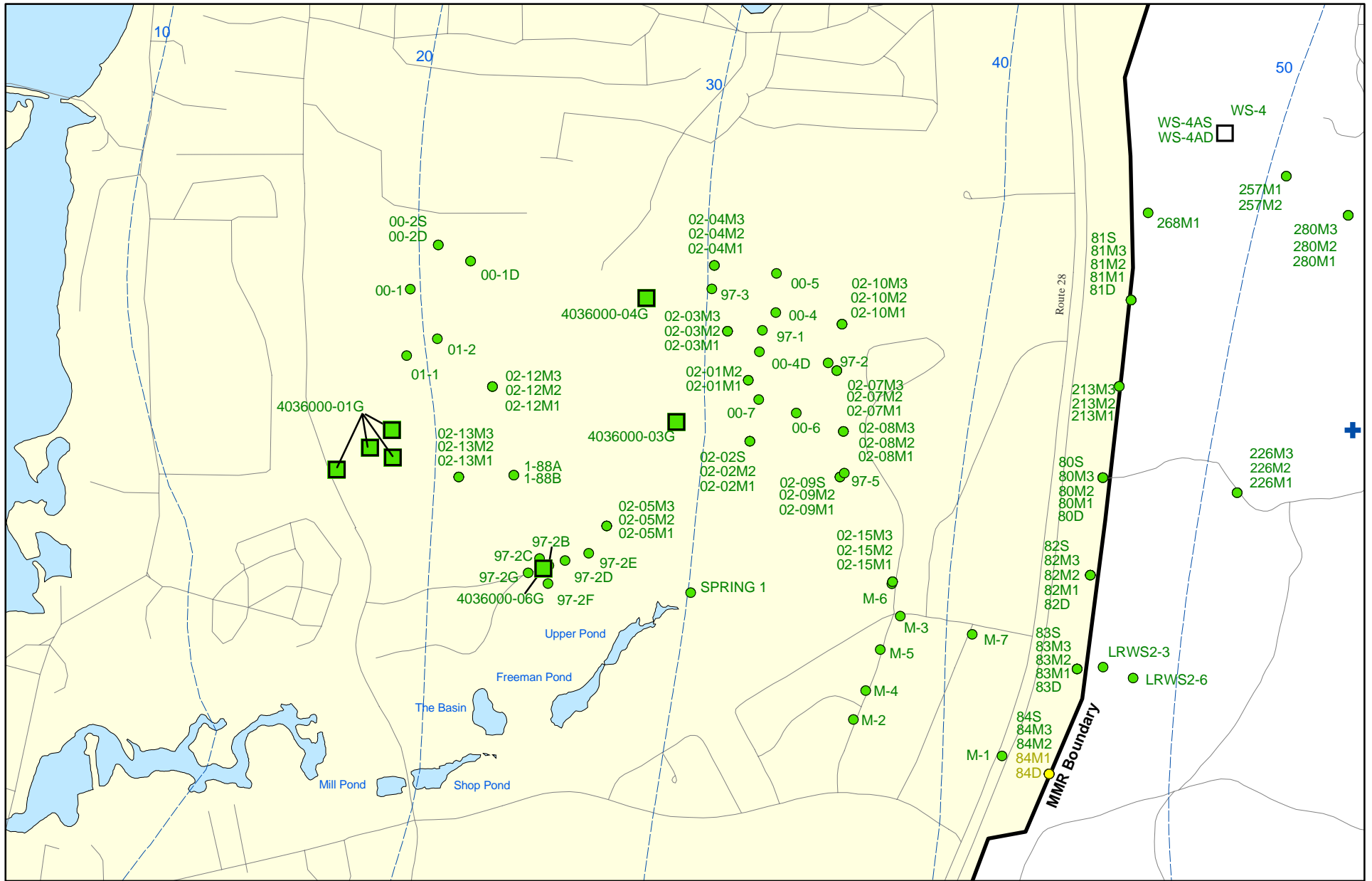
- Validated Detection Greater than or Equal to Maximum Contaminant Level/Health Advisories
- Validated Detection Less than Maximum Contaminant Level/Health Advisories
- Validated Non-Detect
- Data Pending
- Proposed Monitoring Well
- Military Range Areas
- + Current Gun Position
- * Current Mortar Position
- + Old Gun Position
- * Old Mortar Position
- Validated Non-Detect Water Supply Well
- Validated Detection Less than Maximum Contaminant Level/Health Advisories Water Supply Well
- Water Table Contour (Feet NGVD), AMEC, September 2003

AMEC Earth & Environmental, Inc.
Westford, Massachusetts

Sources & Notes
Base map data from US Geological Survey
7 1/2 minute Topographic Maps
Source: Office of Geographic and
Environmental Information (MassGIS)
Commonwealth of Massachusetts
Executive Office of Environmental Affairs

FIGURE 1

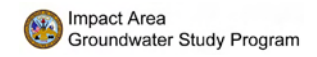
Inset Map



Sources & Notes:
 Base map data from US Geological Survey
 7 1/2 minute Topographic maps.
 Source: Office of Geographic and
 Environmental Information (MassGIS)
 Commonwealth of Massachusetts
 Executive Office of Environmental Affairs

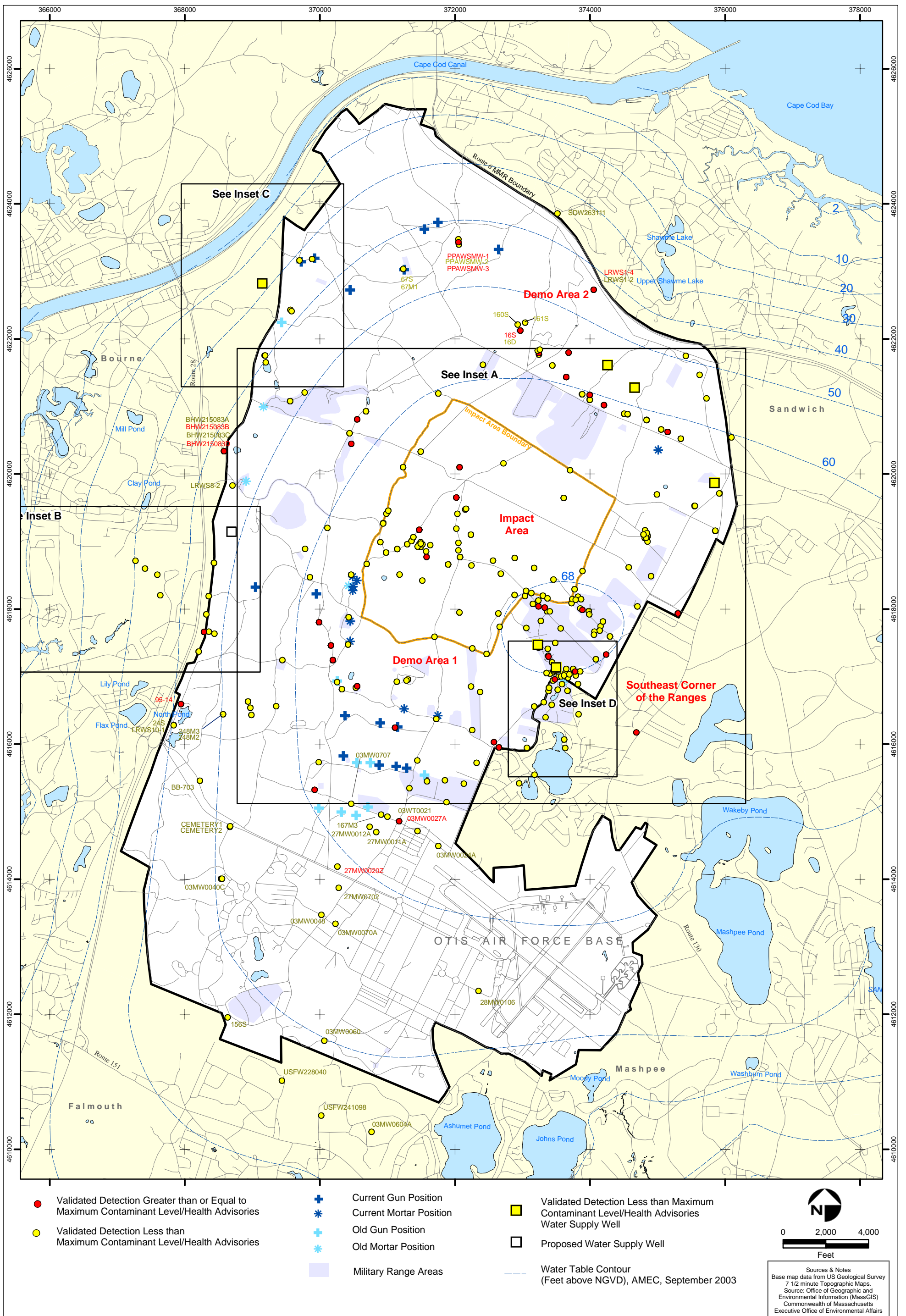
- Validated Detection Less than Maximum Contaminant Level/Health Advisories
- Validated Non-Detect
- + Current Gun Position
- Validated Non-Detect Water Supply Well
- Proposed Water Supply Well
- Water Table Contour (Feet NGVD)
AMEC, September 2003

**Explosives in Groundwater Compared to
 Maximum Contaminant Level/Health Advisories
 Validated Data as of 03/24/06**



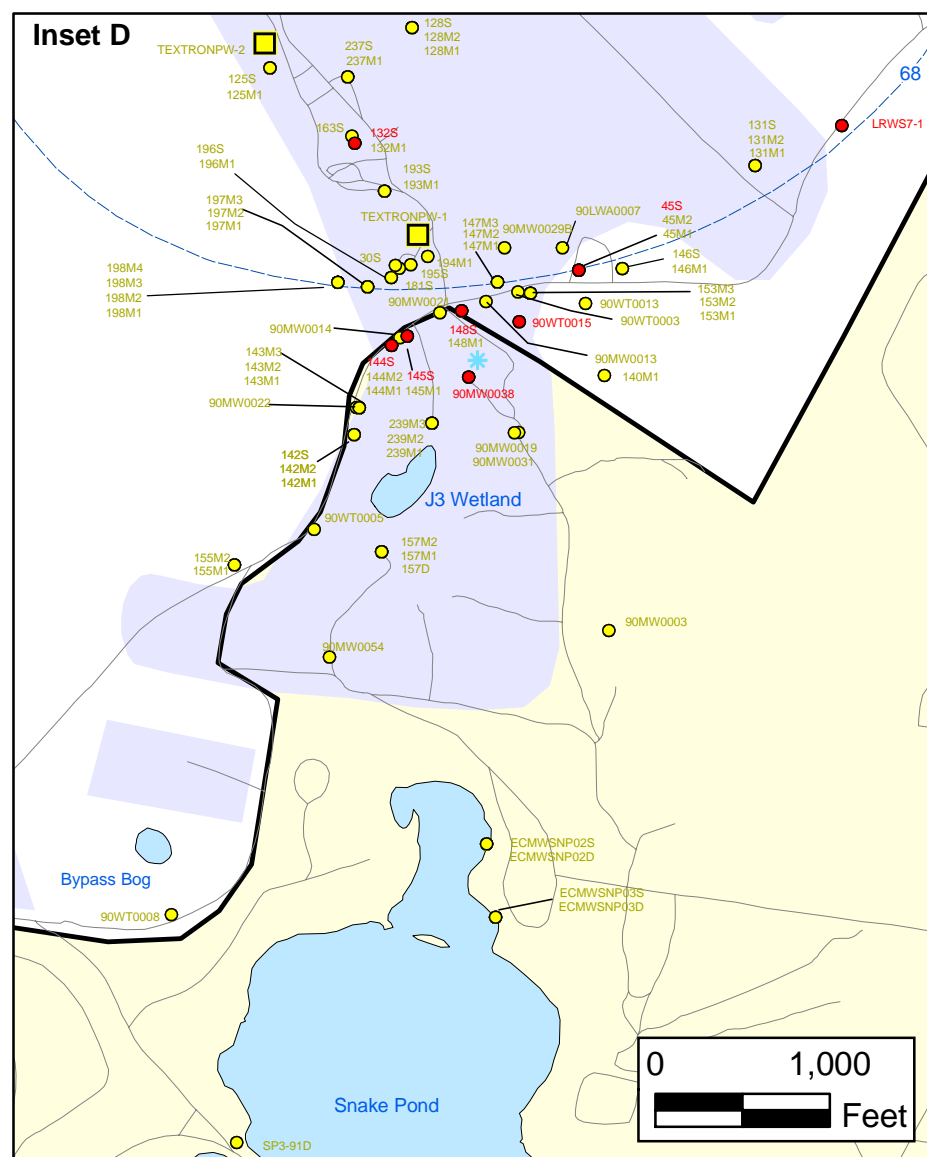
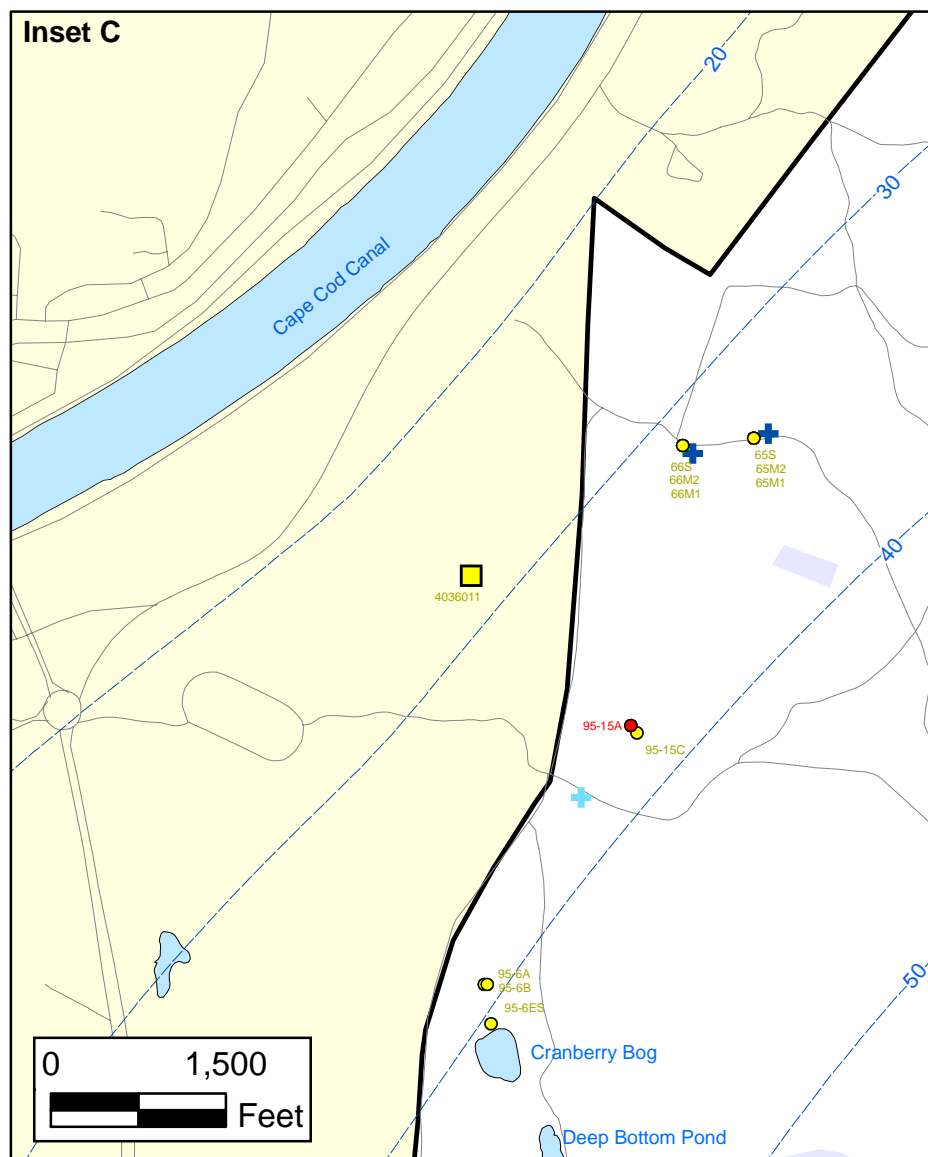
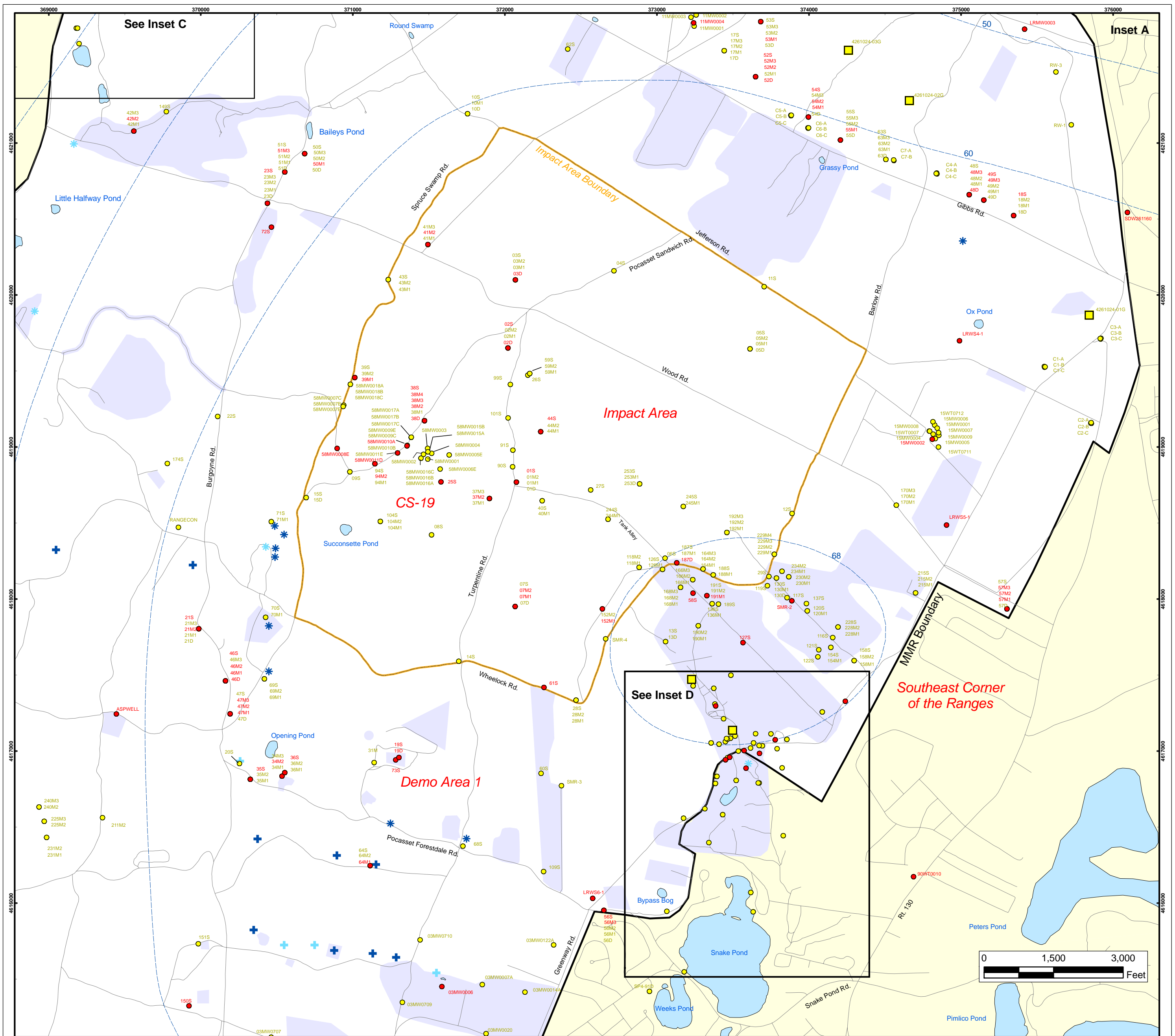
AMEC Earth & Environmental, Inc.
 Westford, Massachusetts

Inset Map B 1



**Metals in Groundwater Compared to
 Maximum Contaminant Level/Health Advisories
 Validated Data as of 03/24/06**

**FIGURE
 2**



Metals in Groundwater Compared to Maximum Contaminant Level/Health Advisories Validated Data as of 03/24/06

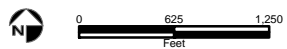
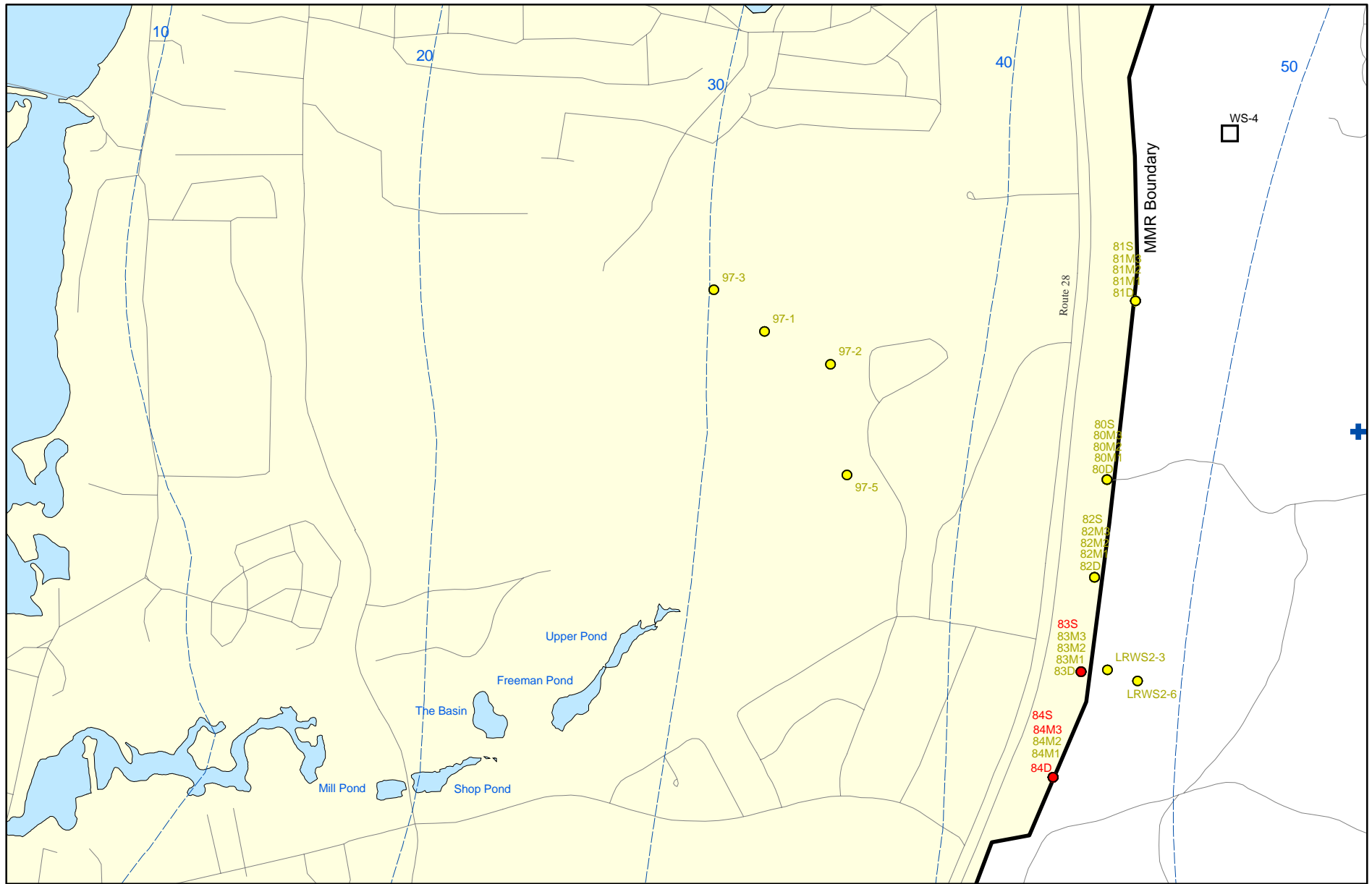
- Validated Detection Greater than or Equal to Maximum Contaminant Level/Health Advisories
- Validated Detection Less than Maximum Contaminant Level/Health Advisories
- Military Range Areas
- + Current Gun Position
- * Current Mortar Position
- + Old Gun Position
- * Old Mortar Position
- Validated Detection Less than Maximum Contaminant Level/Health Advisories Water Supply Well
- Water Table Contour (Feet NGVD), AMEC, September 2003

AMEC Earth & Environmental, Inc.
Westford, Massachusetts

FIGURE
2

Inset Map

Sources & Notes
Base map data from US Geological Survey 7 1/2 minute Topographic Maps.
Source: Office of Geographic and Environmental Information (MassGIS) Commonwealth of Massachusetts Executive Office of Environmental Affairs

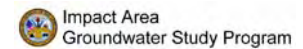


Sources & Notes:
 Base map data from US Geological Survey
 7 1/2 minute Topographic maps.
 Source: Office of Geographic and
 Environmental Information (MassGIS)
 Commonwealth of Massachusetts
 Executive Office of Environmental Affairs

AMEC Earth & Environmental, Inc.
 Westford, Massachusetts

- Validated Detection Greater than or Equal to Maximum Contaminant Level/Health Advisories
- Validated Detection Less than Maximum Contaminant Level/Health Advisories
- Proposed Water Supply Well
- + Current Gun Position
- Water Table Contour (Feet NGVD)
AMEC, September 2003

**Metals in Groundwater Compared to
 Maximum Contaminant Level/Health Advisories
 Validated Data as of 03/24/06**



Inset Map B FIGURE 2