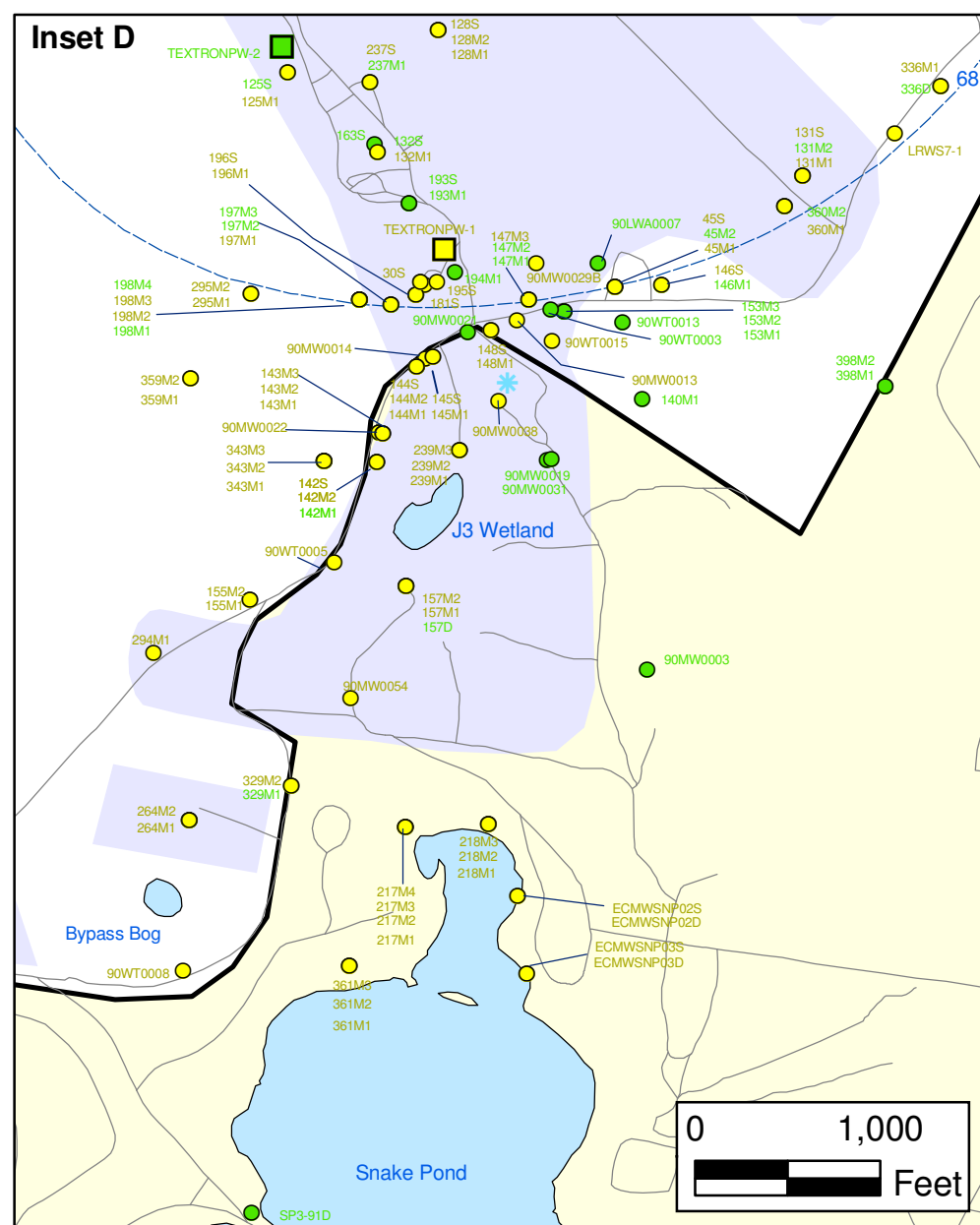
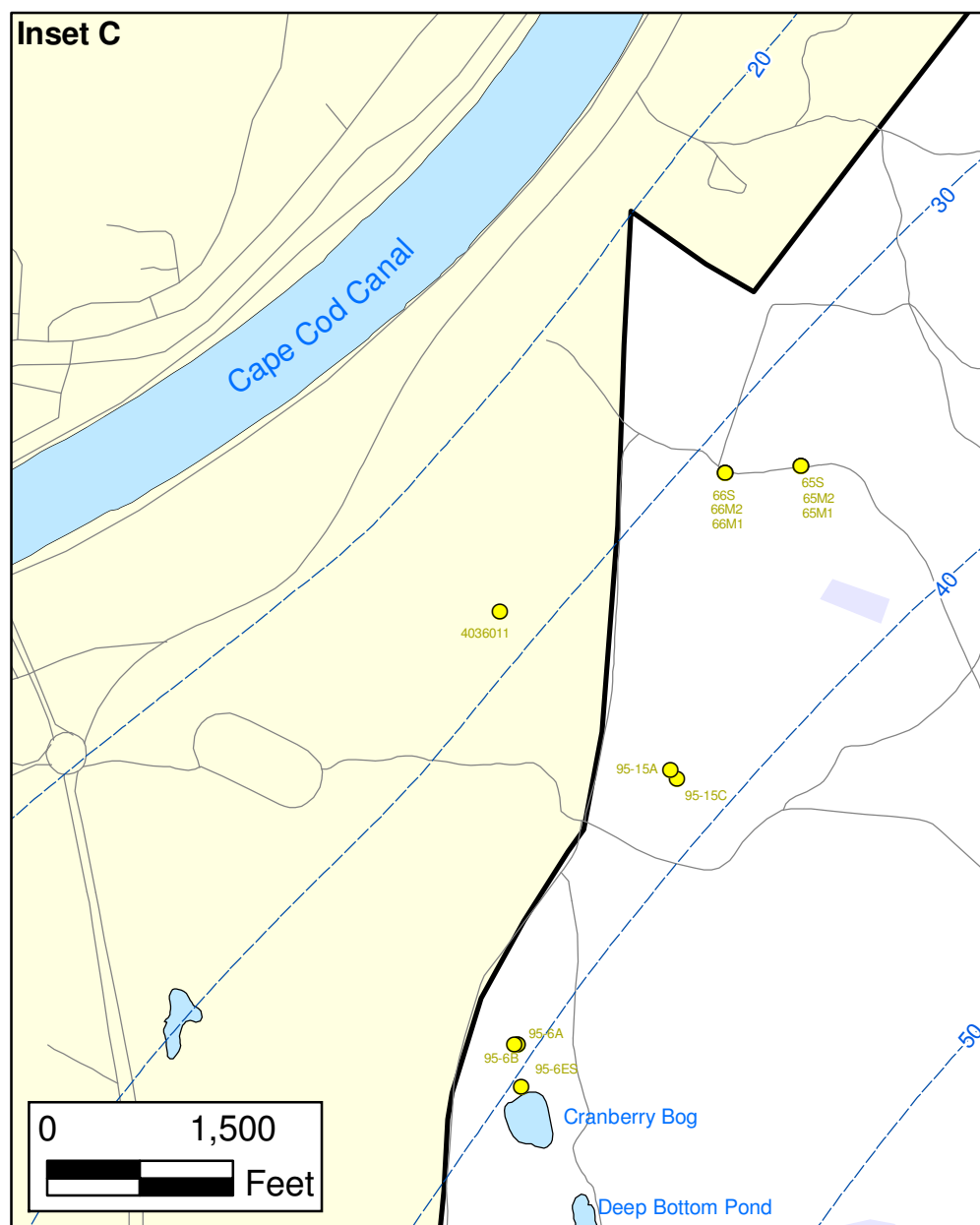
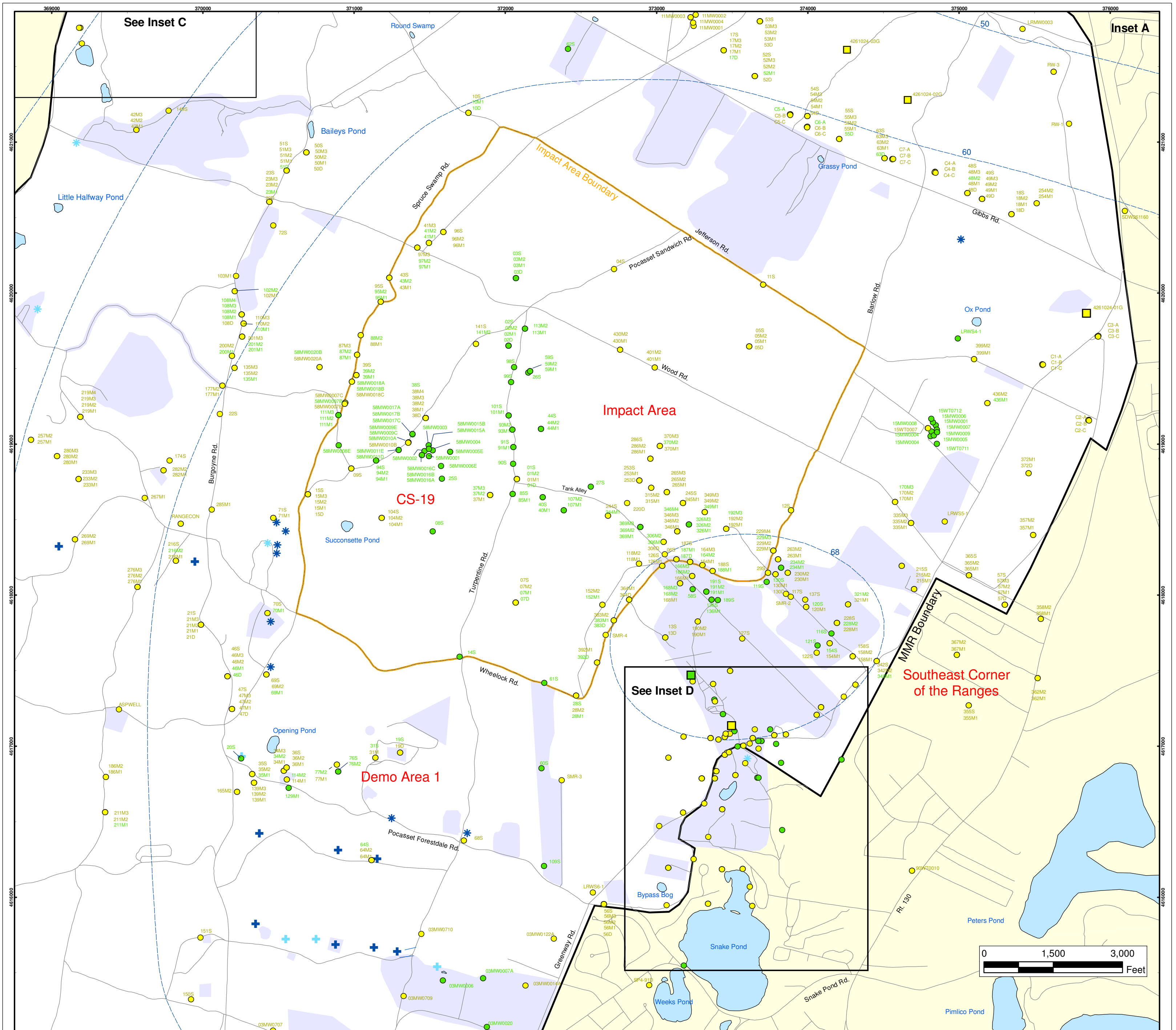


**Chloroform in Groundwater Compared to Maximum Contaminant Level/Health Advisories
 Validated Data as of 06/23/06**

FIGURE 4



Chloroform in Groundwater Compared to Maximum Contaminant Level/Health Advisories Validated Data as of 06/23/06

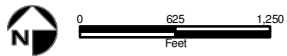
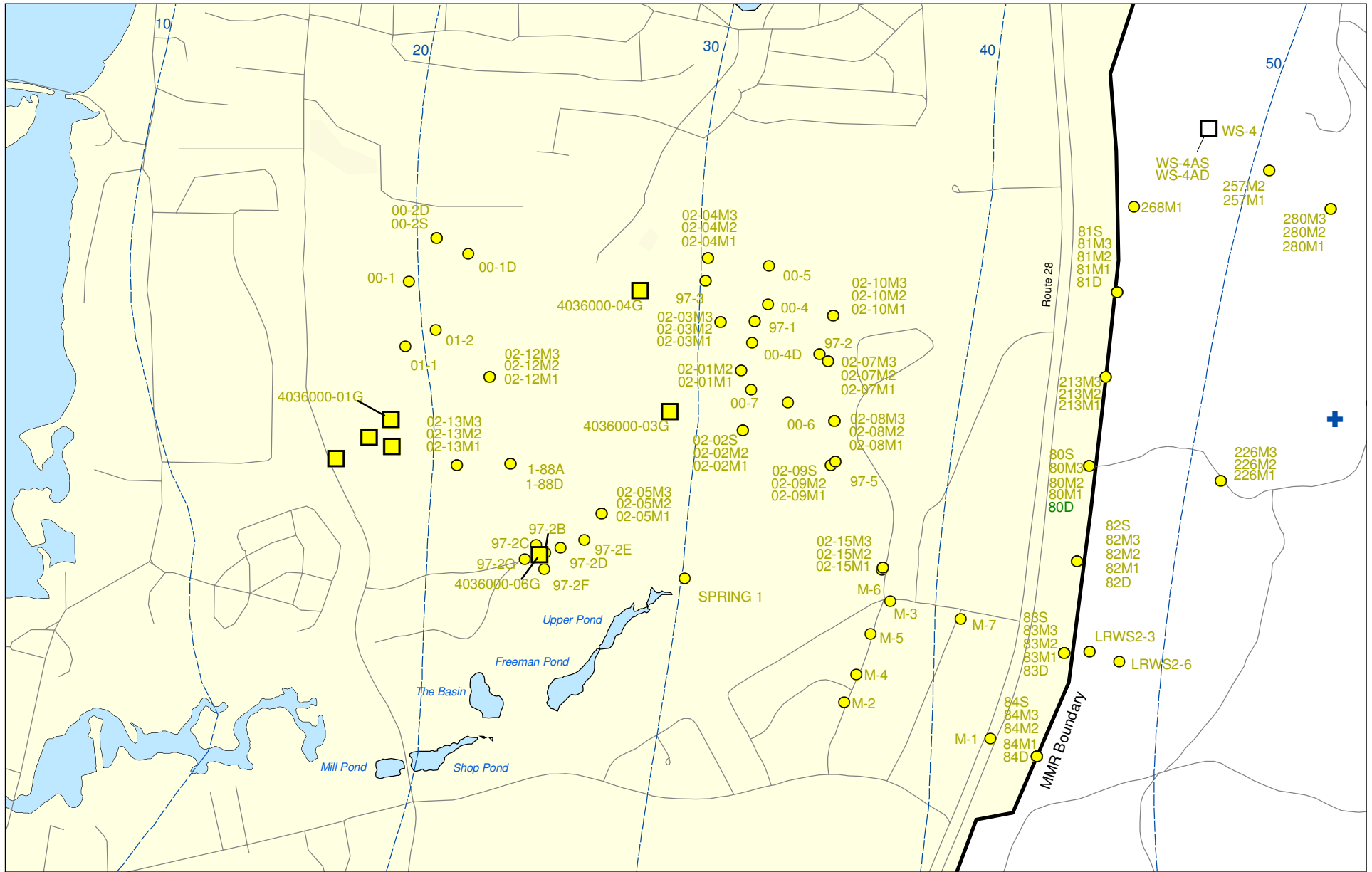
- Validated Detection Less than Maximum Contaminant Level/Health Advisories
- Validated Non-Detect
- Data Pending
- Proposed Monitoring Well
- Military Range Areas
- + Current Gun Position
- * Current Mortar Position
- + Old Gun Position
- * Old Mortar Position
- Validated Non-Detect Water Supply Well
- Validated Detection Less than Maximum Contaminant Level/Health Advisories Water Supply Well
- Water Table Contour (Feet NGVD), AMEC, September 2003

**Impact Area
Groundwater Study Program**

Sources & Notes
Base map data from US Geological Survey
7 1/2 minute Topographic Maps
Source: Office of Geographic and
Environmental Information (MassGIS)
Commonwealth of Massachusetts
Executive Office of Environmental Affairs

AMEC Earth & Environmental, Inc.
Westford, Massachusetts

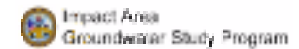
Inset Map
FIGURE
4



Sources & Notes:
 Base map data from US Geological Survey
 7 1/2 minute Topographic maps.
 Source: Office of Geographic and
 Environmental Information (MassGIS)
 Commonwealth of Massachusetts
 Executive Office of Environmental Affairs

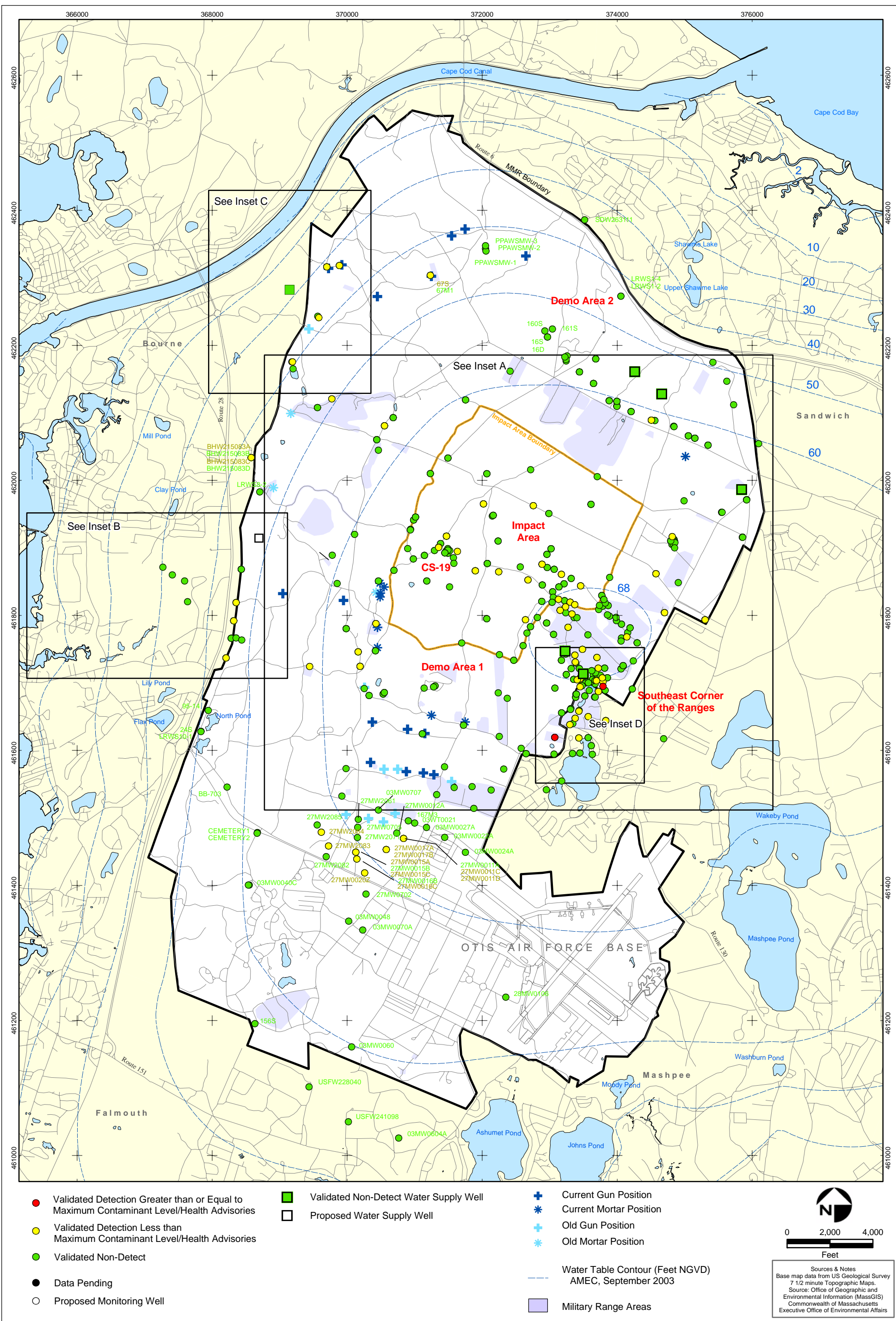
- Validated Detection Less than Maximum Contaminant Level/Health Advisories
- Validated Non-Detect
- + Current Gun Position
- Validated Detection Less than the Maximum Contaminant Level/Health Advisories
- Proposed Water Supply Well
- Water Table Contour (Feet NGVD)
AMEC, September 2003

Chloroform in Groundwater Compared to Maximum Contaminant Level/Health Advisories
 Validated Data as of 06/23/06



AMEC Earth & Environmental, Inc.
 Westford, Massachusetts

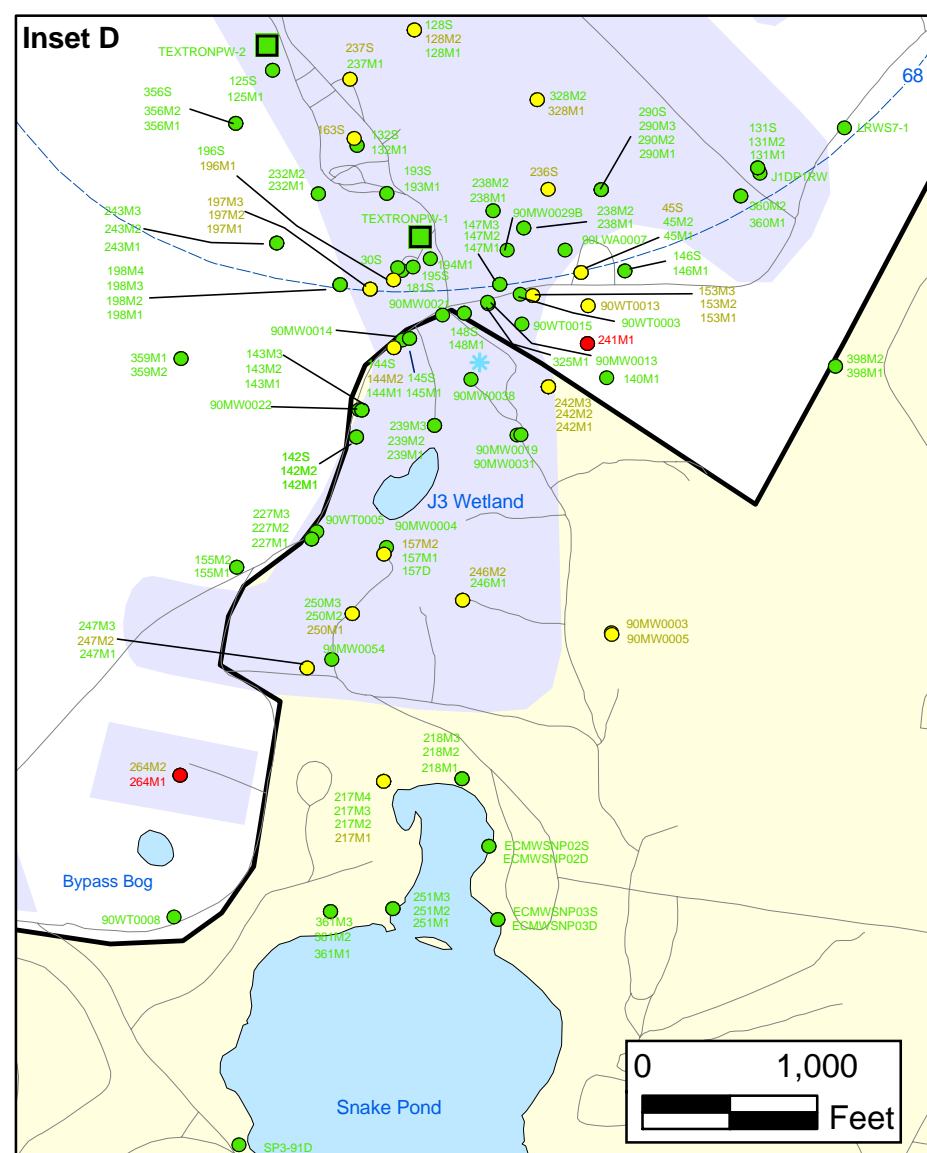
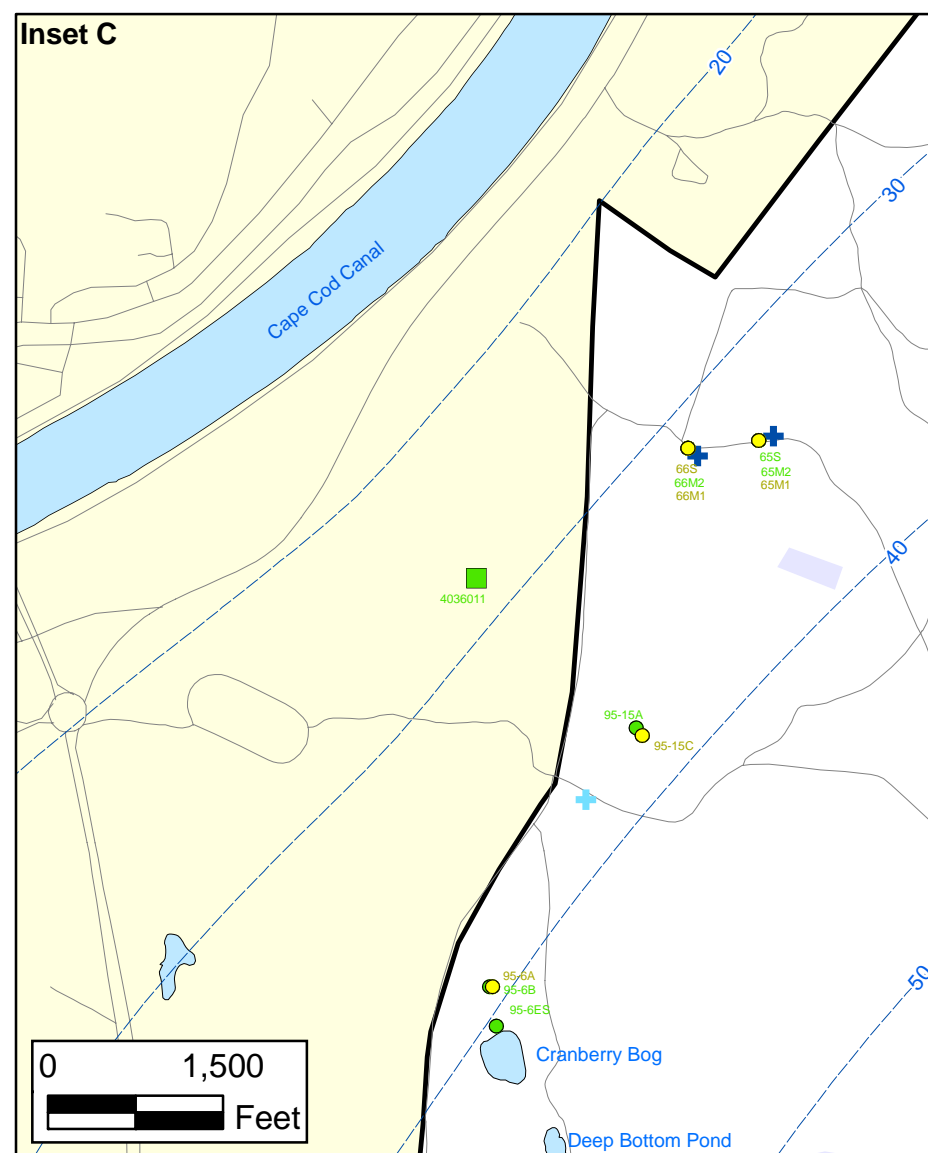
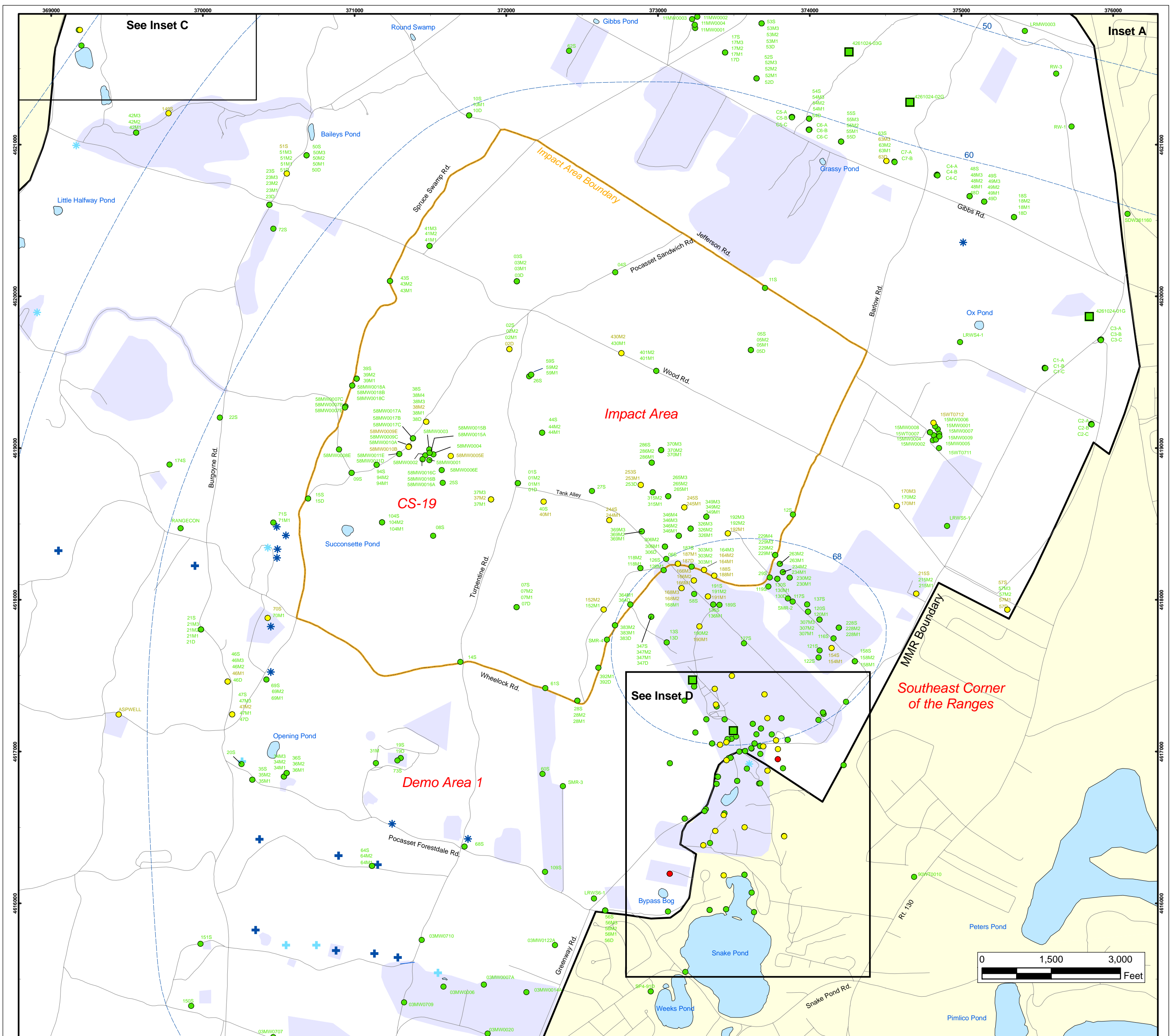
FIGURE
 Inset Map B **4**



Semi-Volatile Organic Compounds (Excluding BEHP) in Groundwater Compared to Maximum Contaminant Level/Health Advisories
Validated Data as of 06/23/06

AMEC Earth & Environmental, Inc.
 Westford, Massachusetts

FIGURE
5



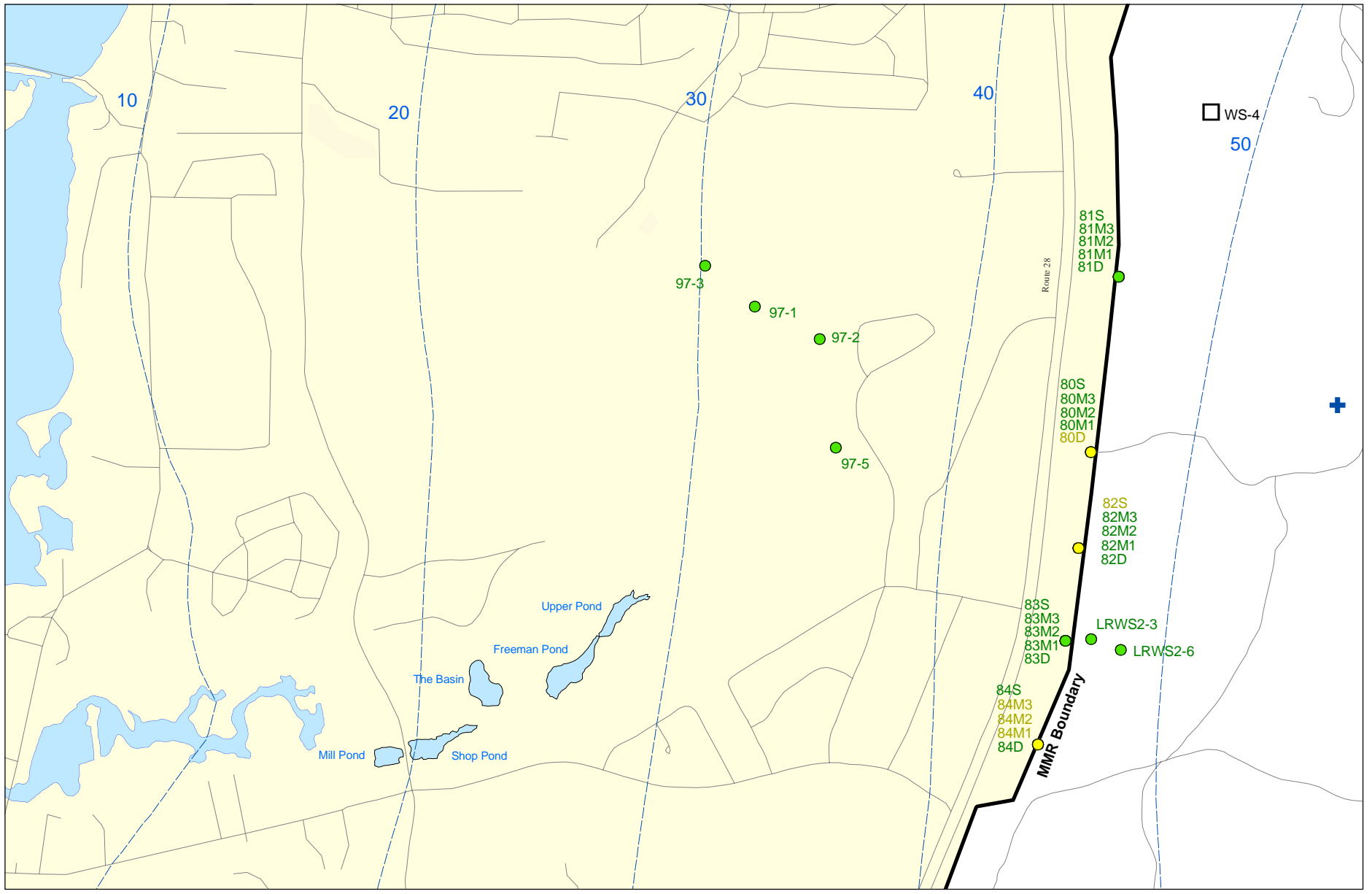
Semi-Volatile Organic Compounds (Excluding BEHP) in Groundwater Compared to Maximum Contaminant Level/Health Advisories Validated Data as of 06/23/06

- Validated Detection Greater than or Equal to Maximum Contaminant Level/Health Advisories
- Validated Detection Less than Maximum Contaminant Level/Health Advisories
- Validated Non-Detect
- Data Pending
- Proposed Monitoring Well
- Military Range Areas
- Current Gun Position
- Current Mortar Position
- Old Gun Position
- Old Mortar Position
- Validated Non-Detect Water Supply Well
- Water Table Contour (Feet NGVD), AMEC, September 2003

Impact Area Groundwater Study Program

AMEC Earth & Environmental, Inc.
Westford, Massachusetts

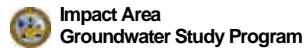
FIGURE 5
Inset Map



Sources & Notes:
 Base map data from US Geological Survey
 7 1/2 minute Topographic maps.
 Source: Office of Geographic and
 Environmental Information (MassGIS)
 Commonwealth of Massachusetts
 Executive Office of Environmental Affairs

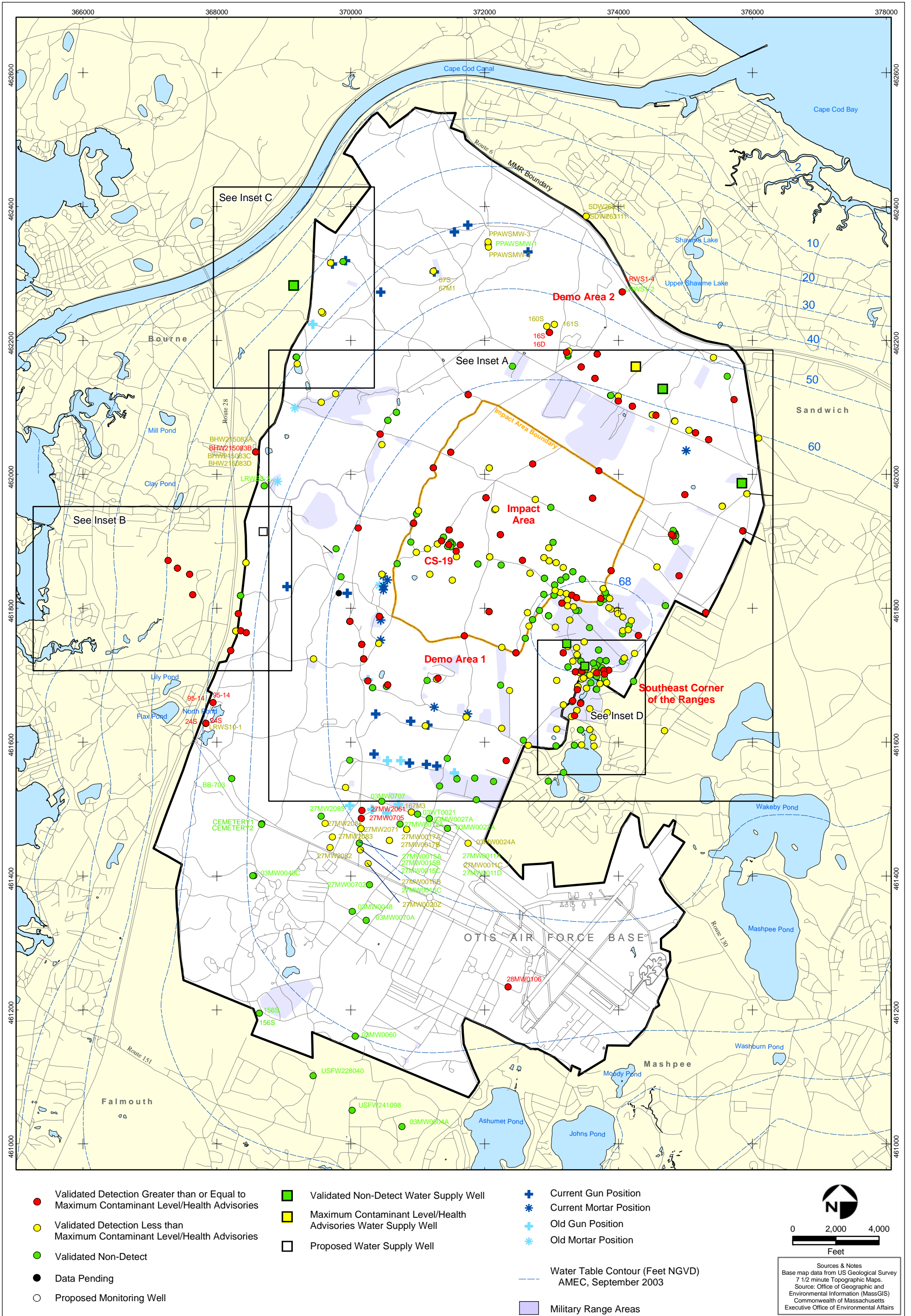
- Validated Detection Less than Maximum Contaminant Level/Health Advisories
- Validated Non-Detect
- Proposed Water Supply Well
- + Current Gun Position
- Water Table Contour (Feet NGVD), AMEC, September 2003

Semi-Volatile Organic Compounds (Excluding BEHP) in Groundwater Compared to Maximum Contaminant Level/Health Advisories Validated Data as of 06/23/06



AMEC Earth & Environmental, Inc.
 Westford, Massachusetts

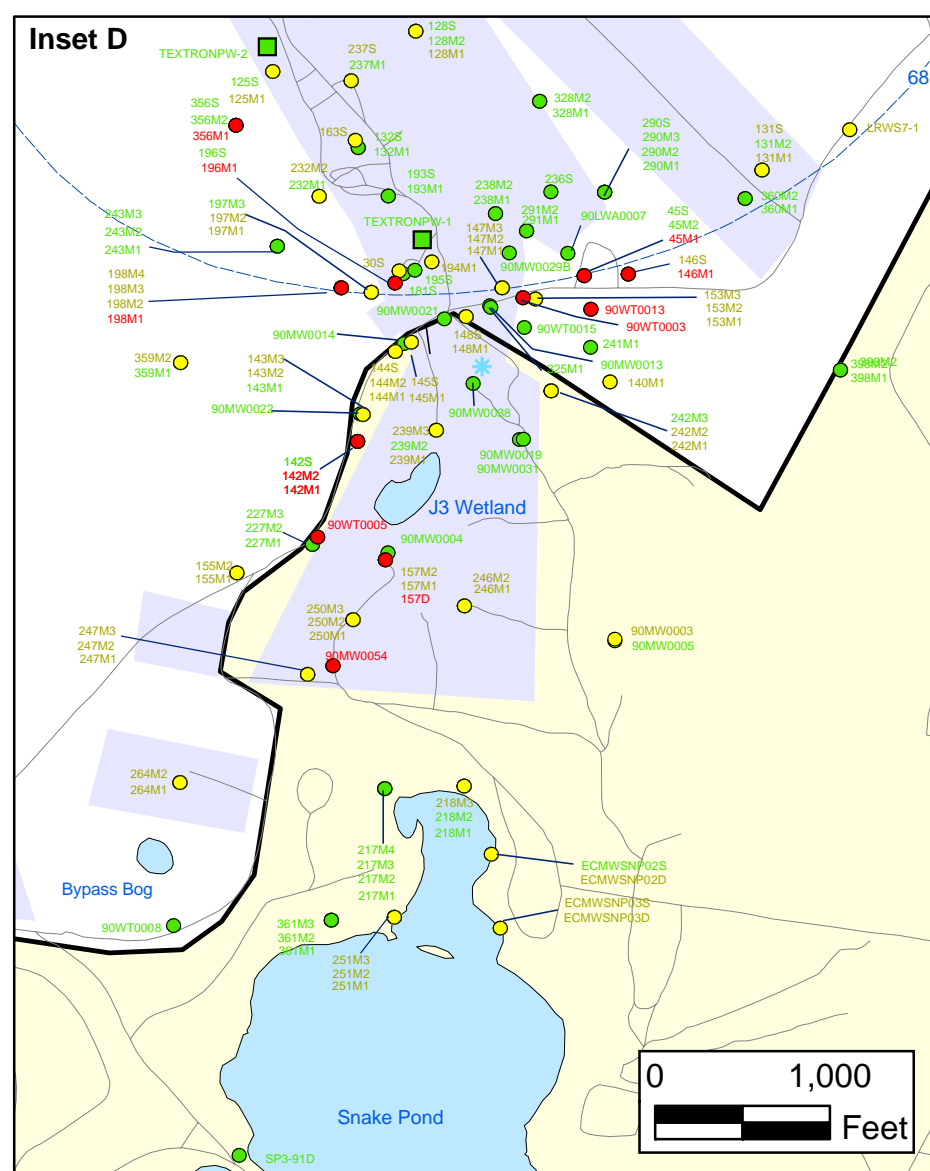
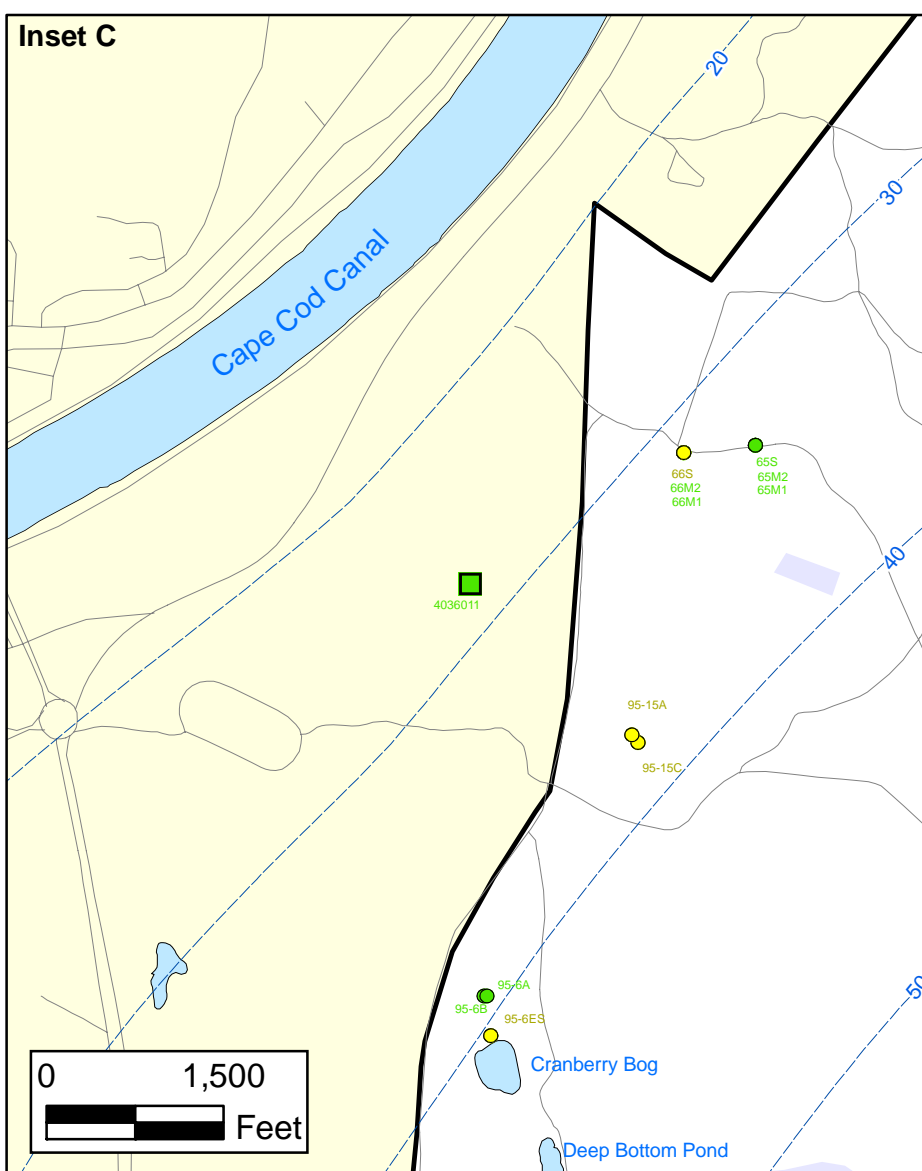
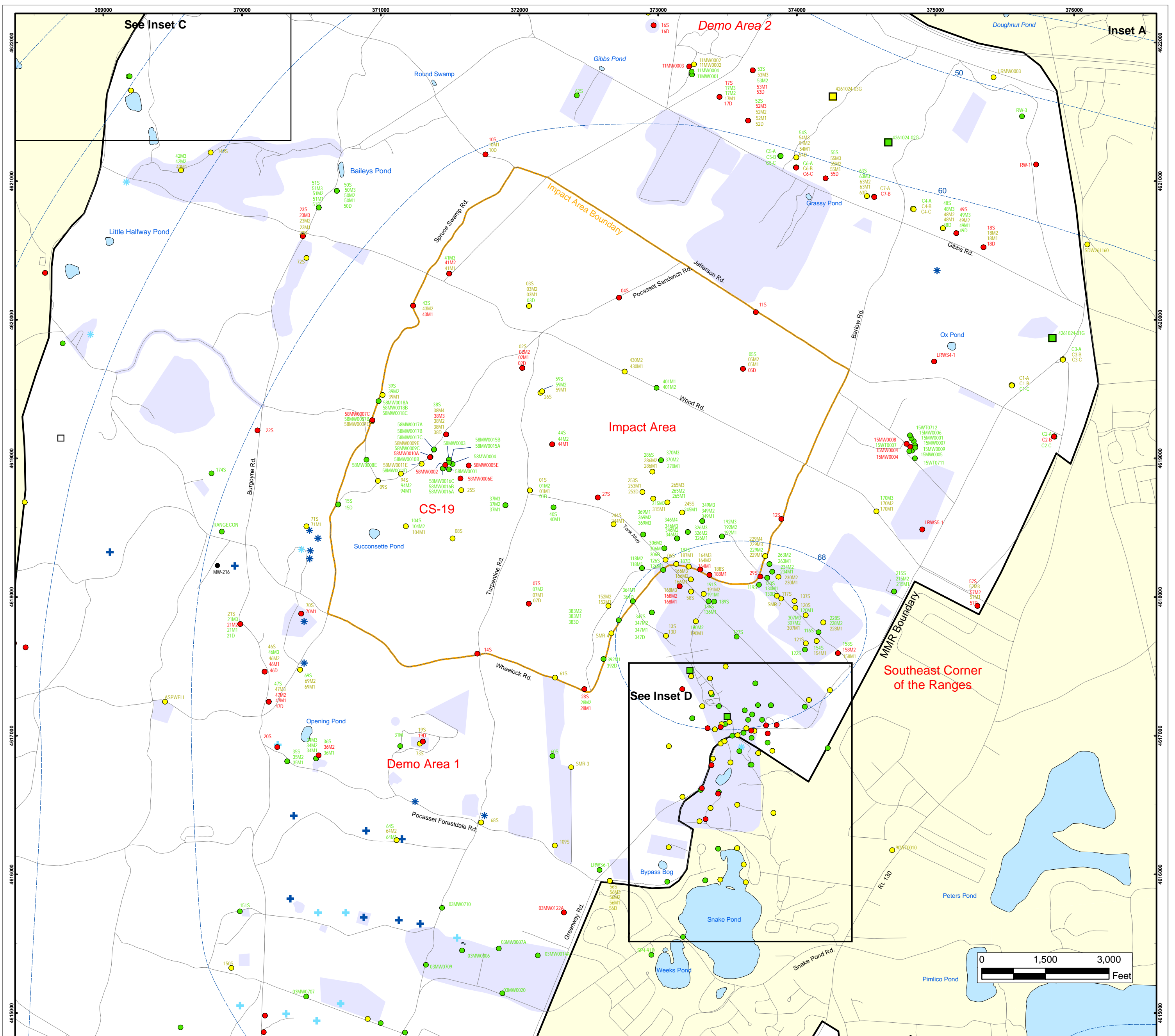
Inset Map B **FIGURE 5**



**BEHP in Groundwater
 Compared to a 4 ppb Concentration
 Validated Data as of 06/23/06**

**FIGURE
 6**

AMEC Earth & Environmental, Inc.
 Westford, Massachusetts



BEHP in Groundwater Compared to Maximum Contaminant Level/Health Advisories Validated Data as of 06/23/06

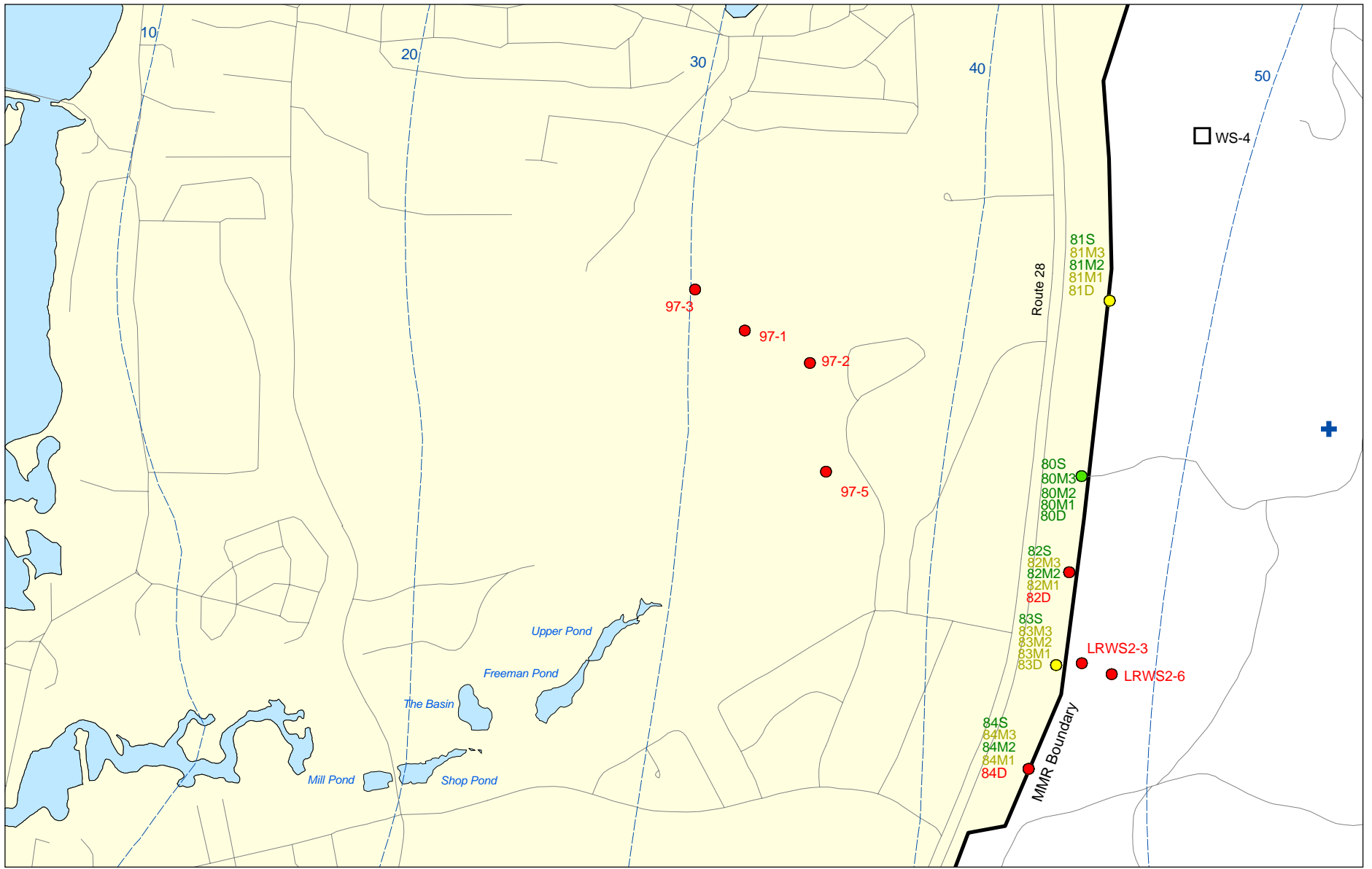
- Validated Detection Greater than or Equal to Maximum Contaminant Level/Health Advisories
- Validated Detection Less than Maximum Contaminant Level/Health Advisories
- Validated Non-Detect
- Data Pending
- Proposed Monitoring Well
- Military Ranges
- + Current Gun Position
- * Current Mortar Position
- + Old Gun Position
- * Old Mortar Position
- Validated Non-Detect Water Supply Well
- Water Table Contour (Feet NGVD), AMEC, September 2003

AMEC Earth & Environmental, Inc.
Westford, Massachusetts

Sources & Notes
Base map data from US Geological Survey
7.1/2 minute Topographic Maps
Source: Office of Geographic and
Environmental Information (MassGIS)
Commonwealth of Massachusetts
Executive Office of Environmental Affairs

FIGURE 6

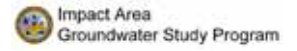
Inset Map



Sources & Notes:
 Base map data from US Geological Survey
 7 1/2 minute Topographic maps.
 Source: Office of Geographic and
 Environmental Information (MassGIS)
 Commonwealth of Massachusetts
 Executive Office of Environmental Affairs

- Validated Detection Greater than or Equal to Maximum Contaminant Level/Health Advisories
- Validated Detection Less than Maximum Contaminant Level/Health Advisories
- Validated Non-Detect
- + Current Gun Position
- Proposed Water Supply Well
- Water Table Contour (Feet NGVD)
AMEC, September 2003

BEHP in Groundwater Compared to Maximum Contaminant Level/Health Advisories Validated Data as of 06/23/06



AMEC Earth & Environmental, Inc.
Westford, Massachusetts

FIGURE
Inset Map B 6