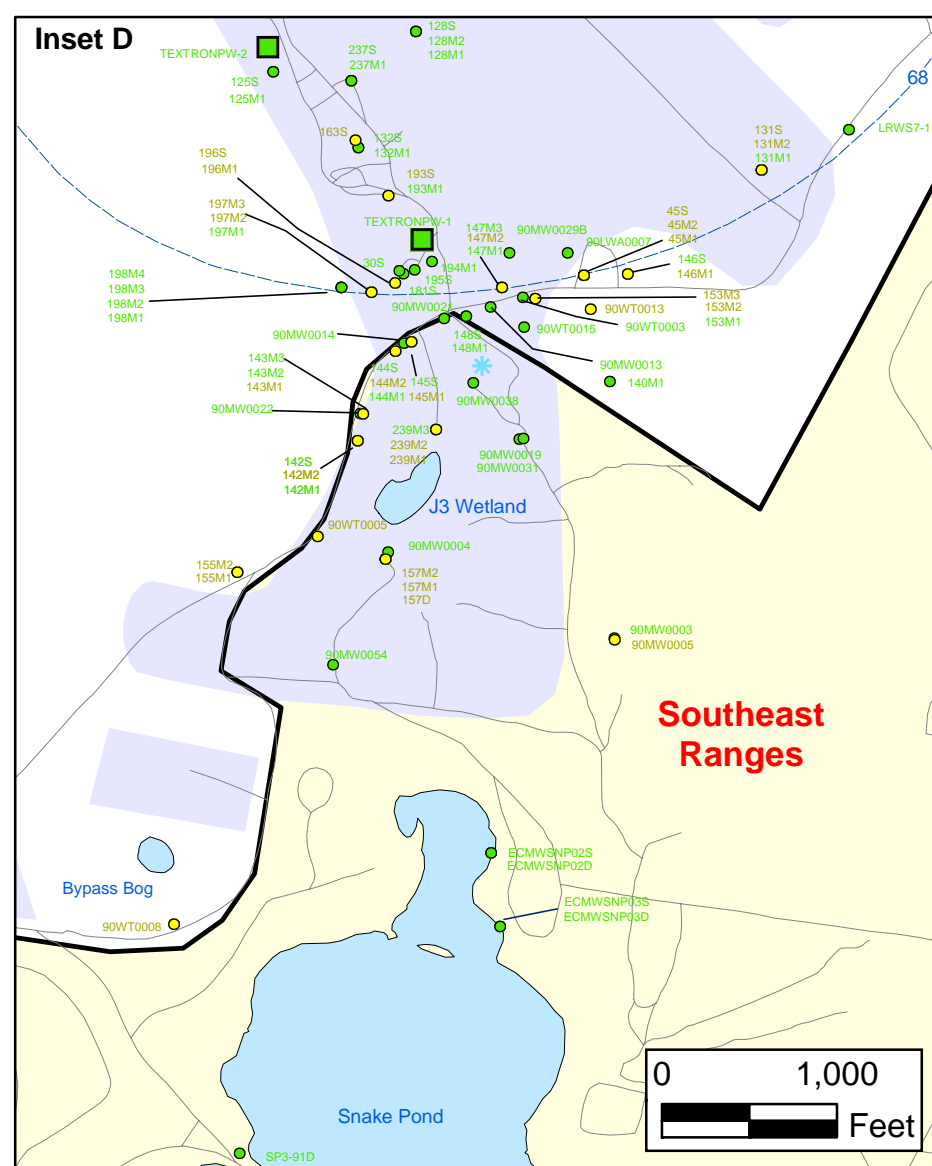
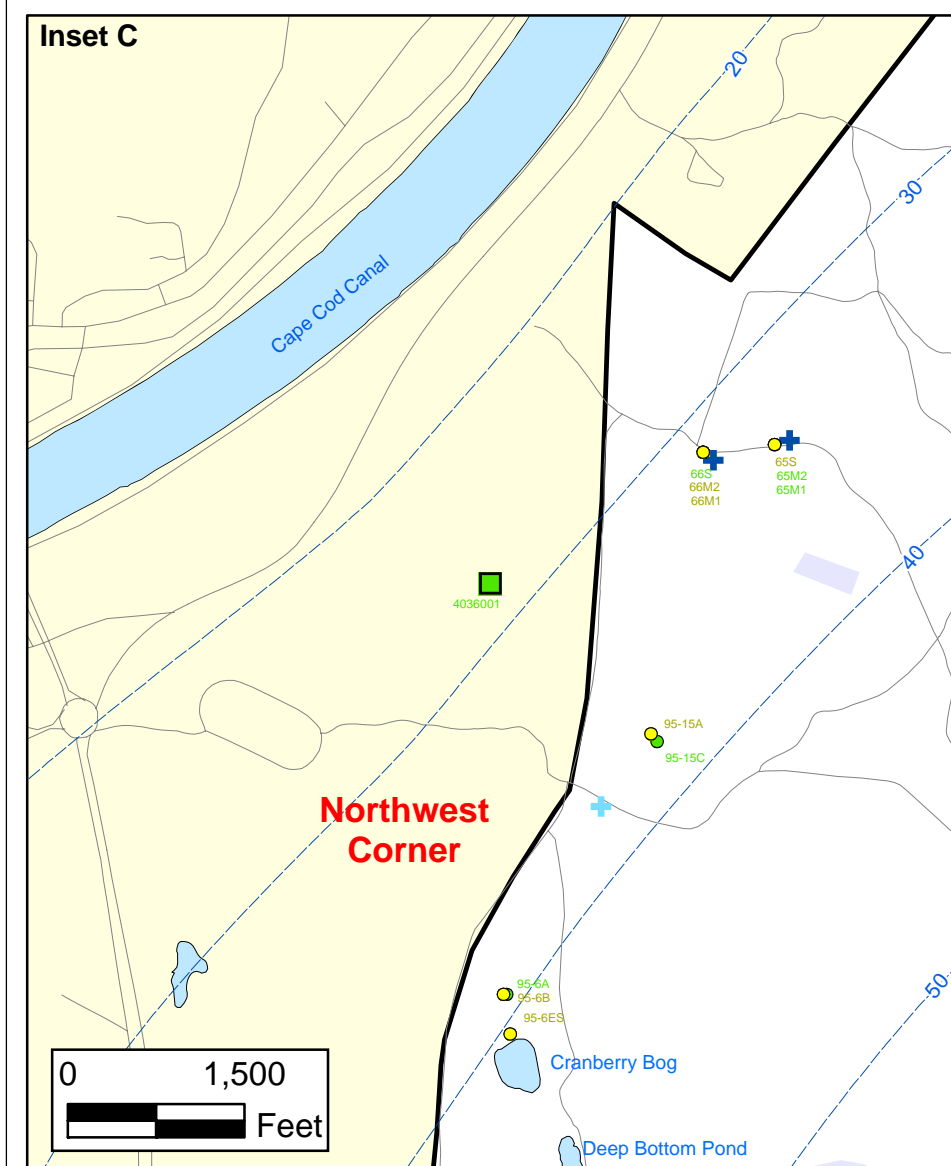
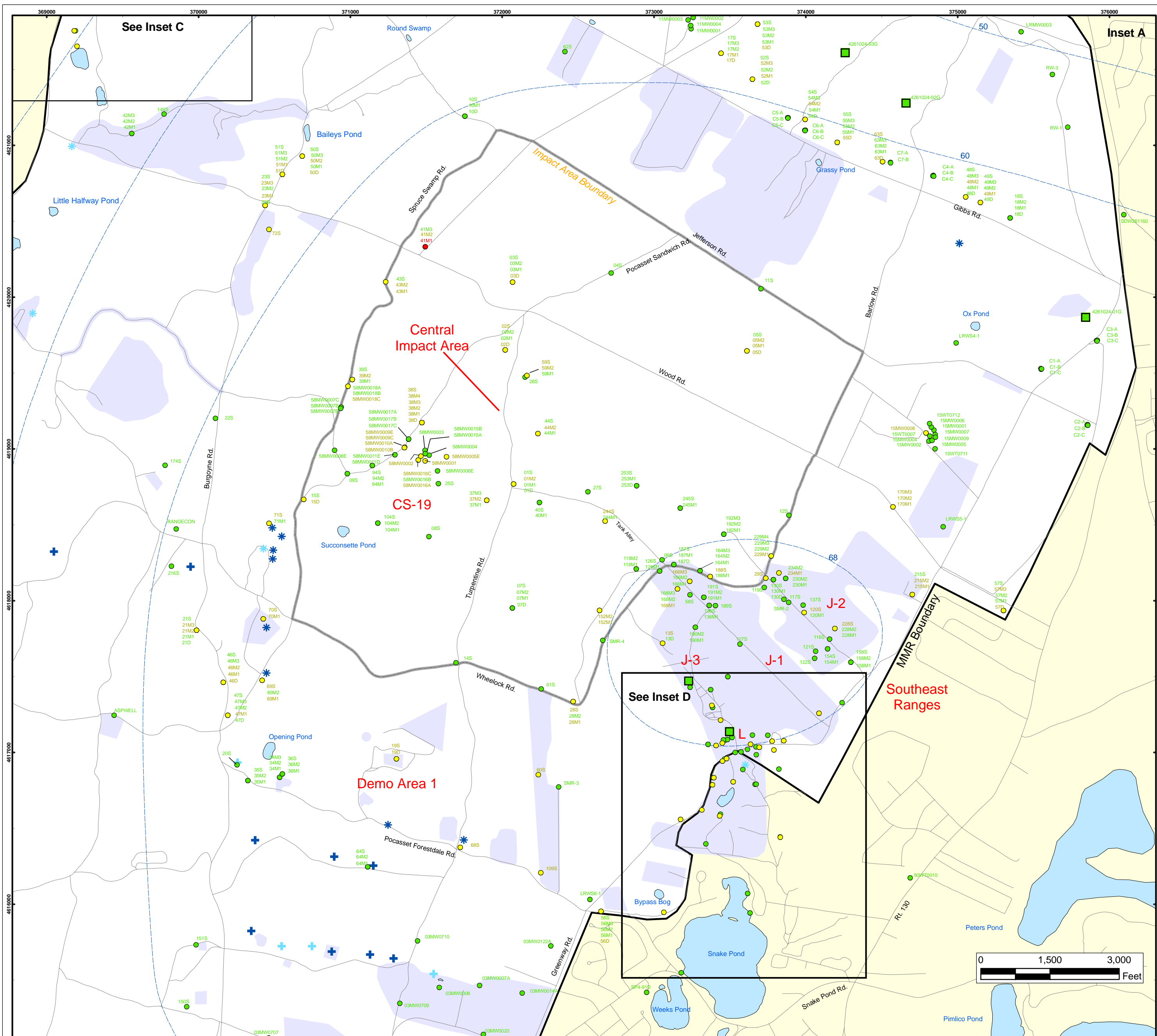


Herbicides & Pesticides in Groundwater Compared to Maximum Contaminant Level/Health Advisories Validated Data as of 12/29/06

AMEC Earth & Environmental, Inc.
Westford, Massachusetts

FIGURE

7



Herbicides and Pesticides in Groundwater Compared to Maximum Contaminant Level/Health Advisories Validated Data as of 12/29/06

- Validated Detection Greater than or Equal to Maximum Contaminant Level/Health Advisories
- Validated Detection Less than Maximum Contaminant Level/Health Advisories
- Validated Non-Detect
- Military Range Areas
- + Current Gun Position
- * Current Mortar Position
- + Old Gun Position
- * Old Mortar Position
- Validated Non-Detect Water Supply Well
- Water Table Contour (Feet NGVD), AMEC, September 2003

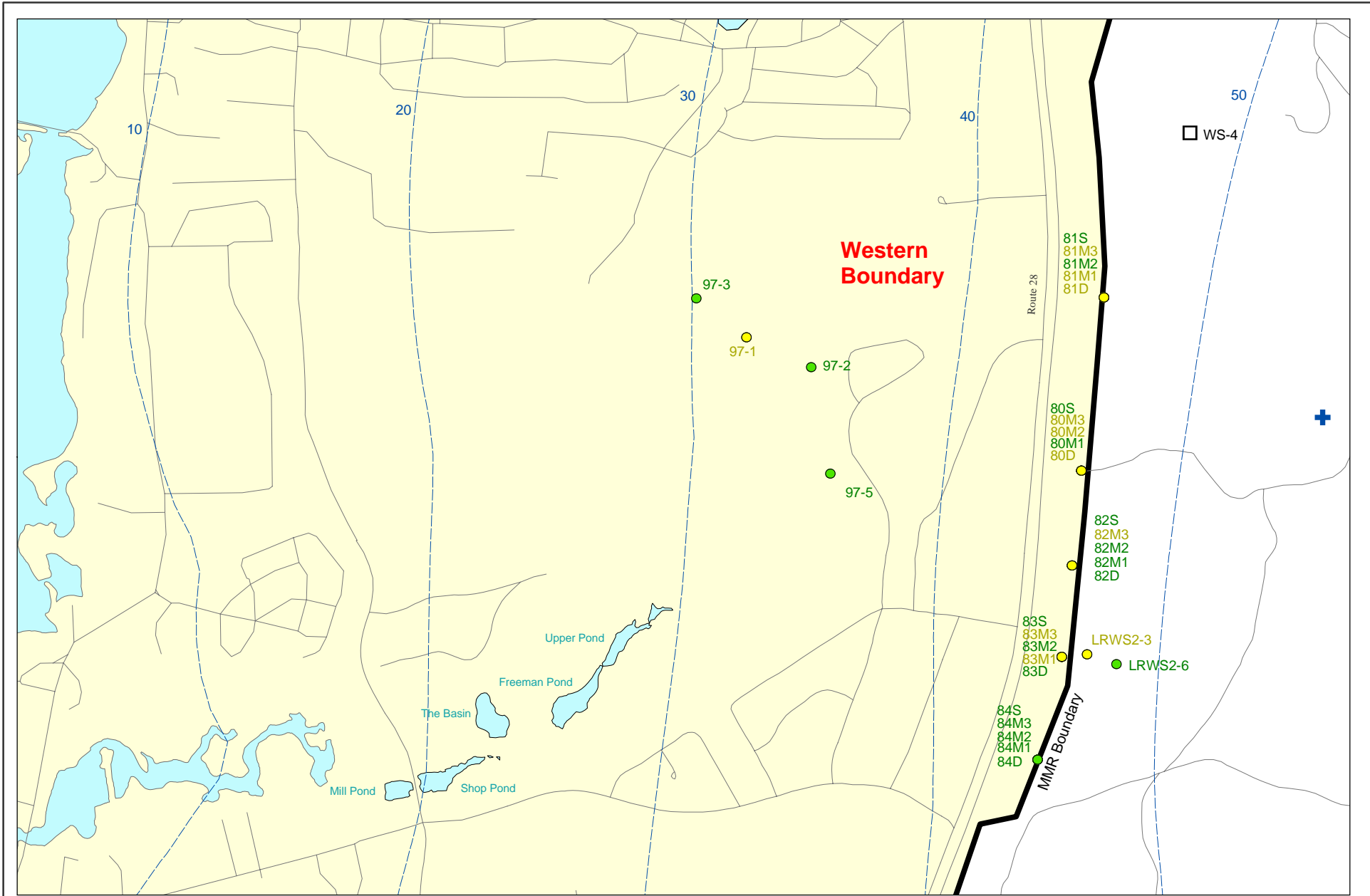
Note: Map dot colors are representative of the highest historical concentration at each well and not the current concentration level. Historical data presented on this figure range from November 1996 through 2006.

Impact Area Groundwater Study Program

AMEC Earth & Environmental, Inc.
Westford, Massachusetts

Sources & Notes
Base map data from US Geological Survey
7 1/2 minute Topographic Maps
Source: Office of Geographic and Environmental Information (MassGIS)
Commonwealth of Massachusetts
Executive Office of Environmental Affairs

FIGURE
7



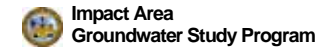
Sources & Notes:
 Base map data from US Geological Survey
 7 1/2 minute Topographic maps.
 Source: Office of Geographic and
 Environmental Information (MassGIS)
 Commonwealth of Massachusetts
 Executive Office of Environmental Affairs

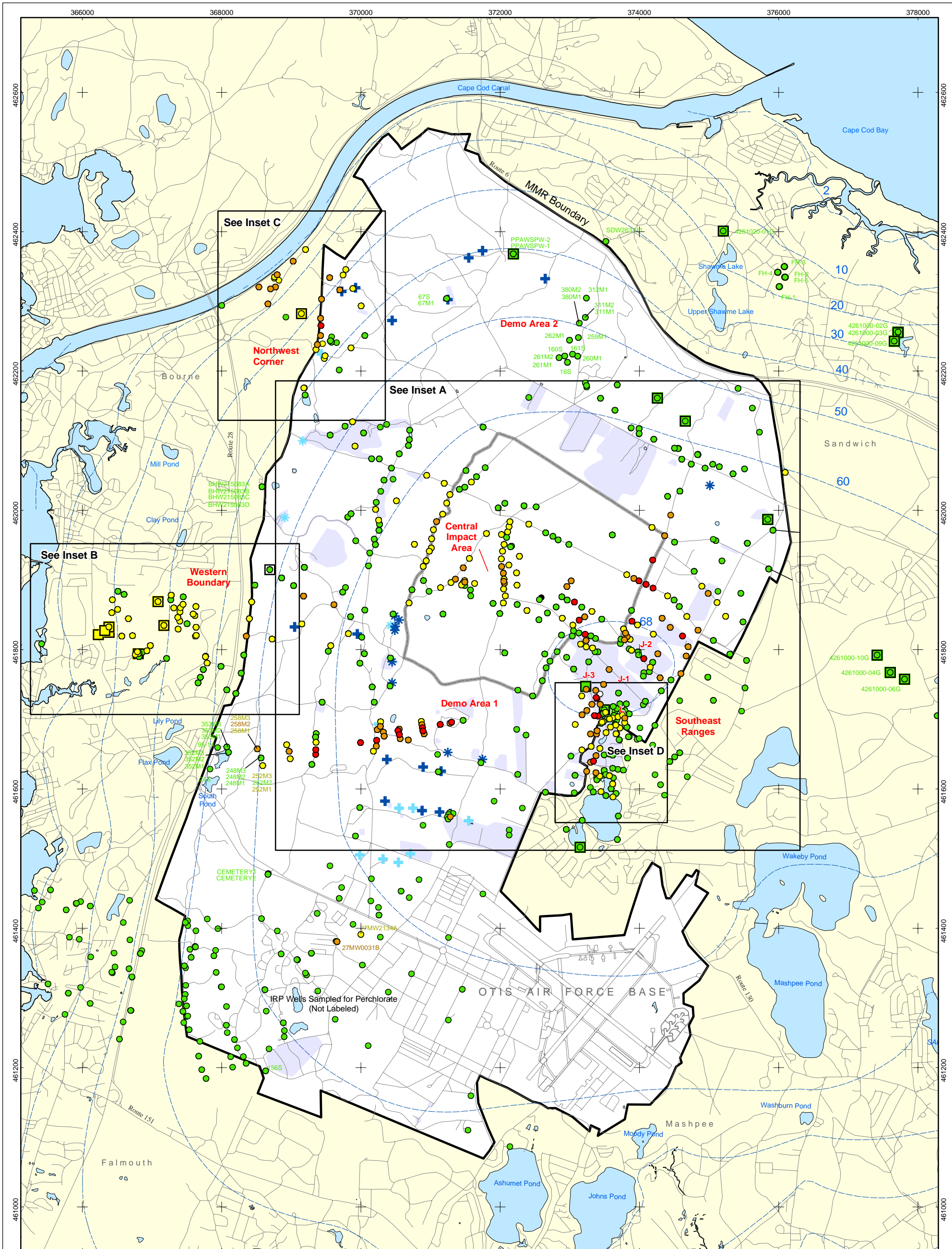
AMEC Earth & Environmental, Inc.
 Westford, Massachusetts

- Validated Detection Less than Maximum Contaminant Level/Health Advisories
- Validated Non-Detect
- Proposed Water Supply Well
- + Current Gun Position
- Water Table Contour (Feet NGVD), AMEC, September 2003

Note: Map dot colors are representative of the highest historical concentration at each well and not the current concentration level. Historical data presented on this figure range from November 1996 through 2006.

Herbicides & Pesticides in Groundwater Compared to Maximum Contaminant Level/Health Advisories Validated Data as of 12/29/06



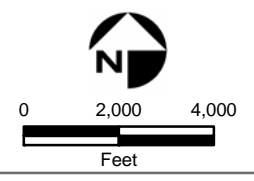


- Validated Detection Greater than or Equal to 24 ppb
- Validated Detection Greater than or Equal to 2 and Less than 24 ppb
- Validated Detection Greater than Non-Detect and Less than 2 ppb
- Validated Non-Detect

Note: Map dot colors are representative of the highest historical concentration at each well and not the current concentration level. Historical data presented on this figure range from November 1996 through 2006.

- Data Pending
- Proposed Monitoring Well
- Current Gun Position
- Current Mortar Position
- Old Gun Position
- Old Mortar Position

- Validated Non-Detect Water Supply Well
- Validated Detection Less than 2 ppb Water Supply Well
- Proposed Water Supply Well
- Water Table Contour (Feet NGVD) AMEC, September 2003
- Military Range Areas

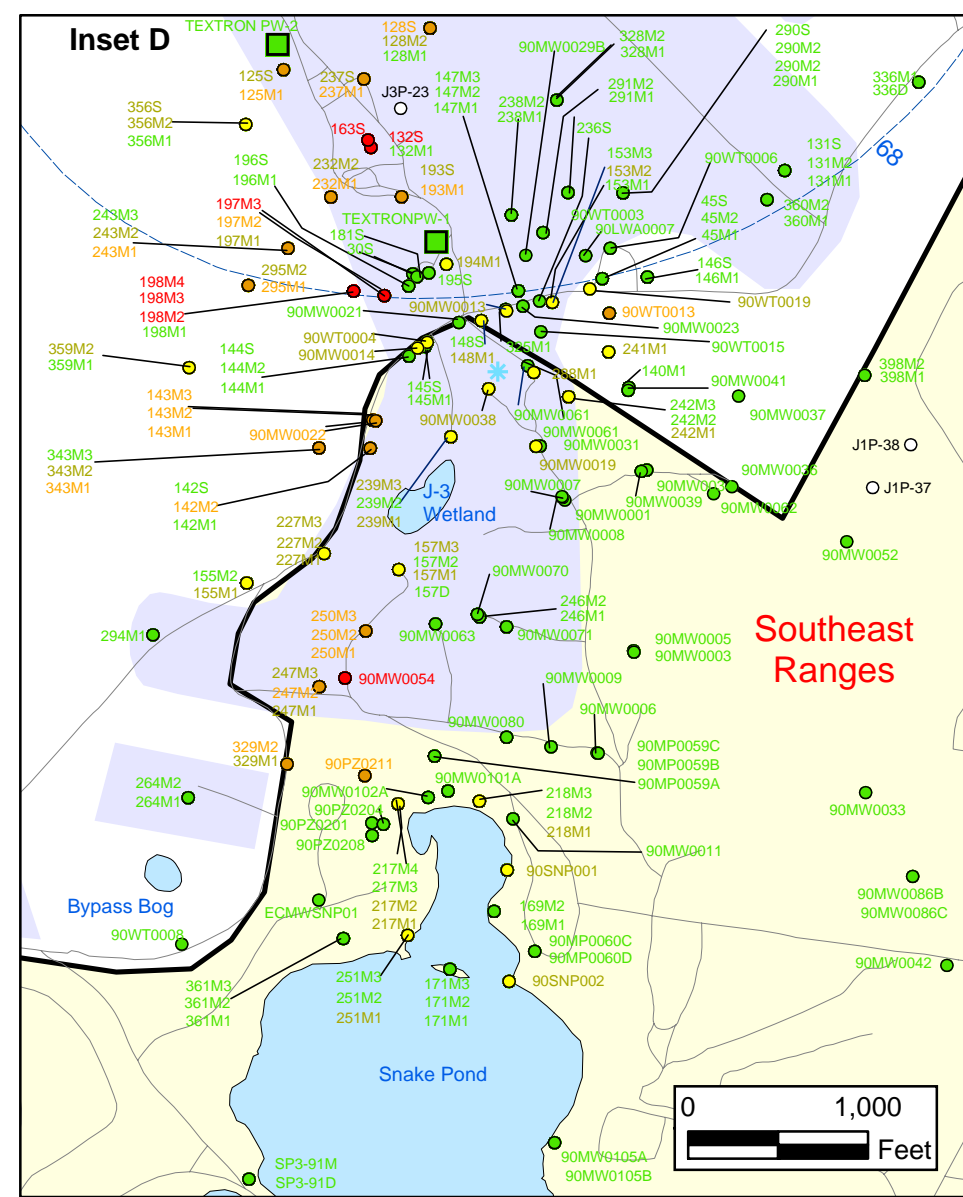
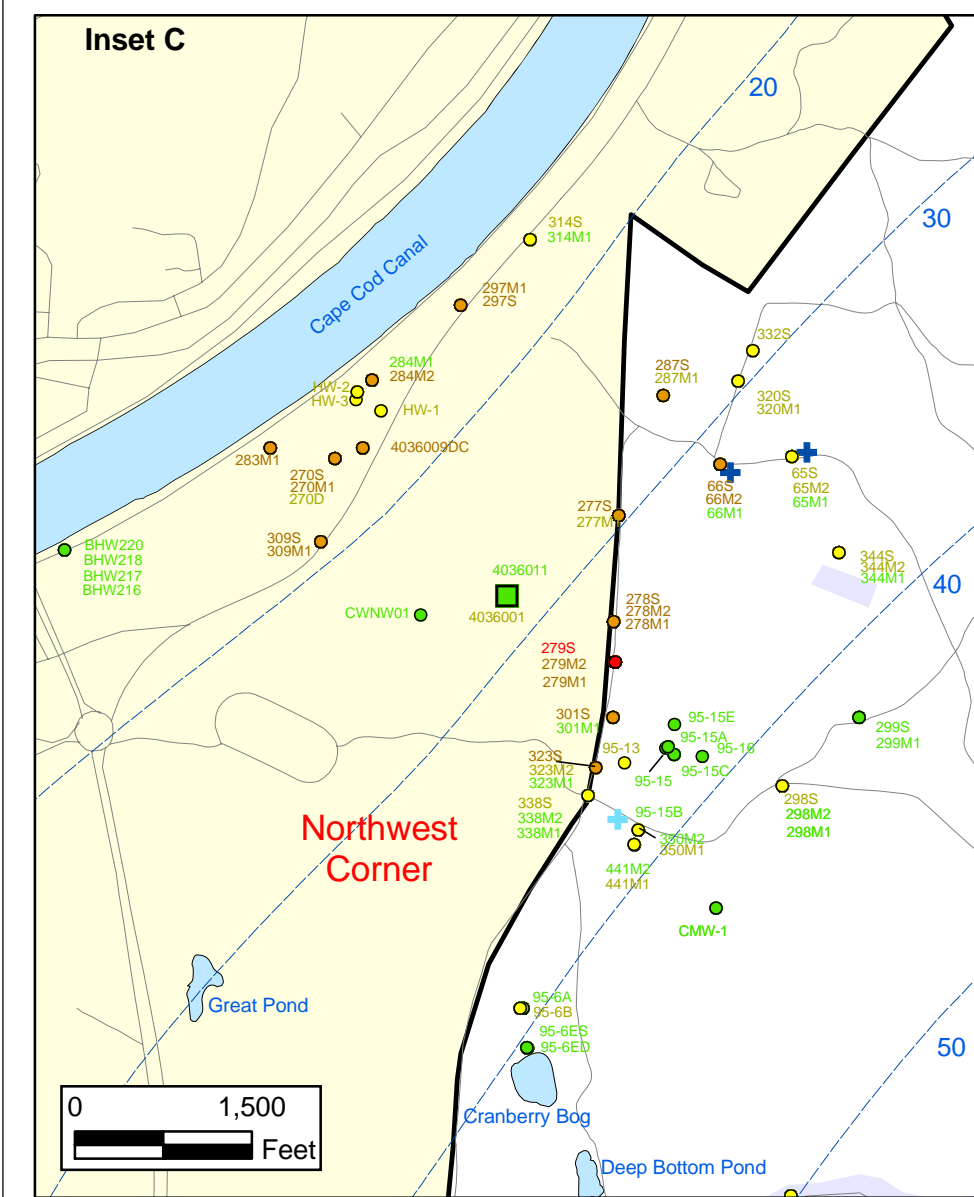
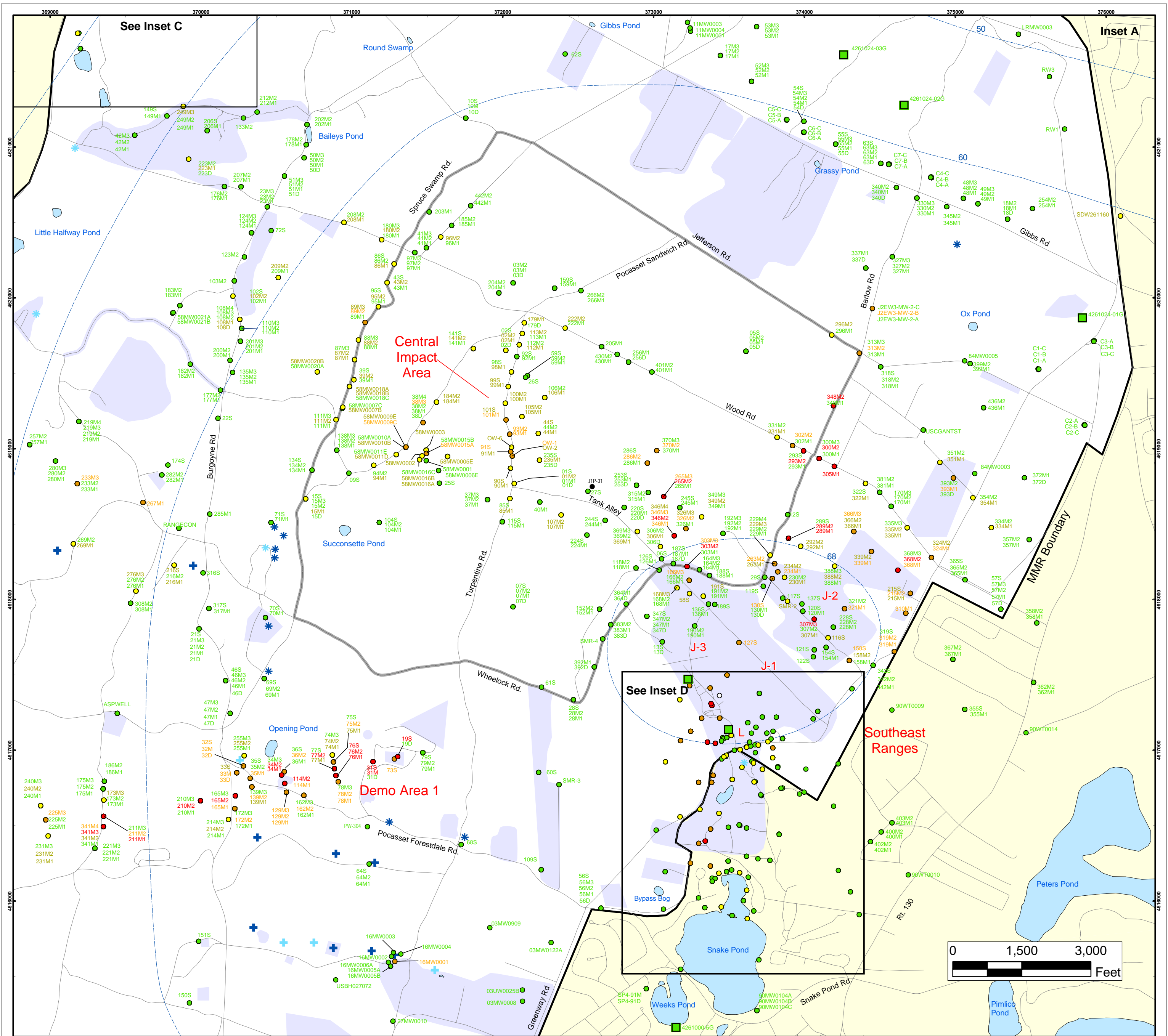


Sources & Notes
 Base map data from US Geological Survey 7 1/2 minute Topographic Maps.
 Source: Office of Geographic and Environmental Information (MassGIS) Commonwealth of Massachusetts Executive Office of Environmental Affairs

AMEC Earth & Environmental, Inc.
 Westford, Massachusetts

**Perchlorate in Groundwater
 Compared to a 2 ppb Concentration
 Validated Data as of 12/29/06**

J:\GIS\2007\Monthlies\01.January\8_Perchlorate\Perch_Overall_Jan07.pdf
 G:\MMR_COE\Work\2007\Monthlies\01.January\07\8_Perch\Perch_Overall_Jan07.mxd
 January 9, 2007 DWN: JBB KMP CHKD: AW



Perchlorate in Groundwater Compared to a 2 PPB Concentration Validated Data as of 12/29/06

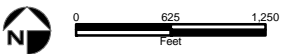
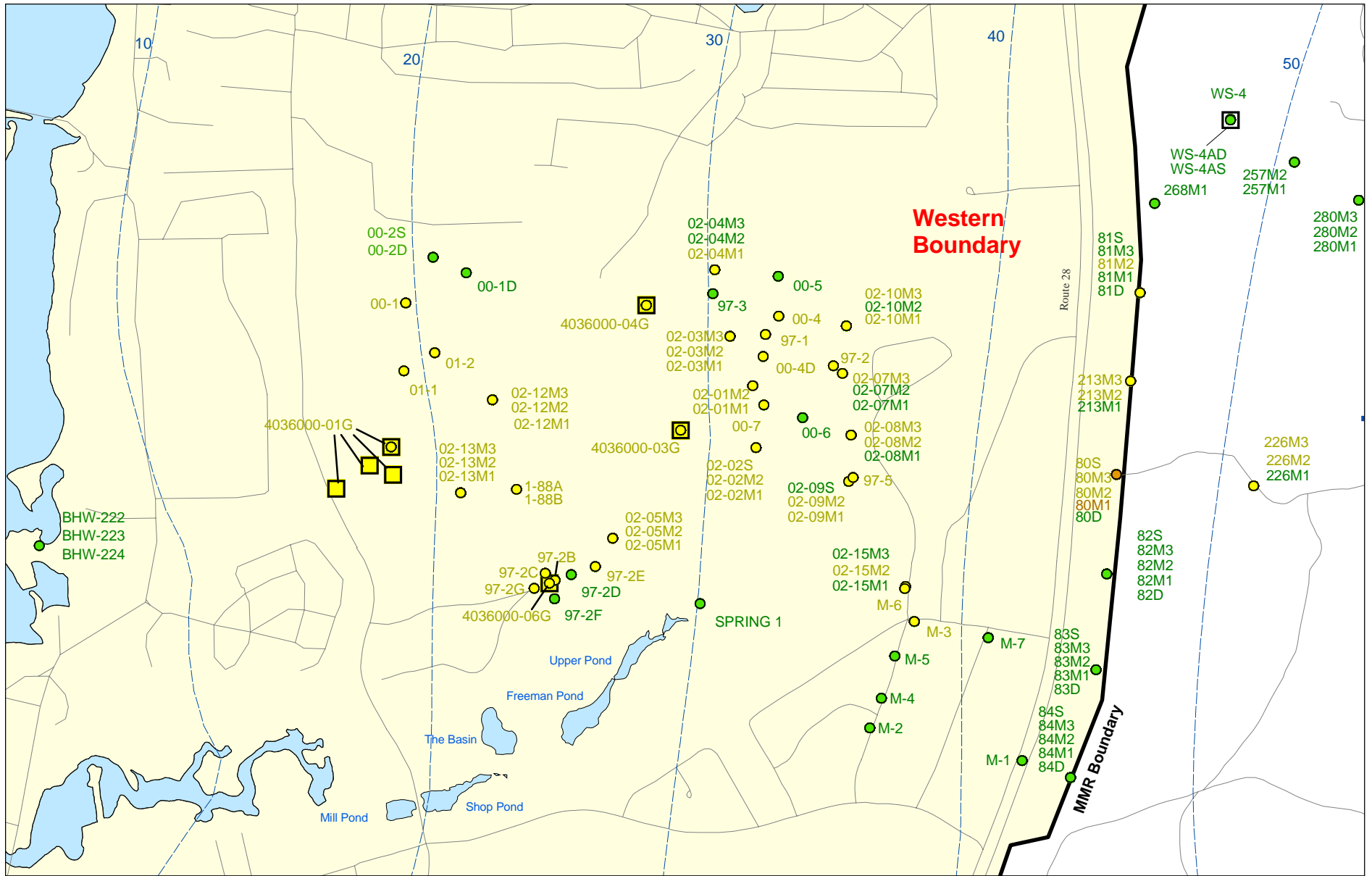
- Validated Detection Greater than or Equal to 24 ppb
- Validated Detection Greater than or Equal to 2 and Less than 24 ppb
- Validated Detection Less than 2 ppb
- Validated Non-Detect
- Data Pending
- Proposed Monitoring Well
- Military Range Areas
- ⊕ Current Gun Position
- ⊕ Current Mortar Position
- ⊕ Old Gun Position
- ⊕ Old Mortar Position
- Validated Non-Detect Water Supply Well
- Water Table Contour (Feet NGVD), AMEC, September 2003

Note: Map dot colors are representative of the highest historical concentration at each well and not the current concentration level. Historical data presented on this figure range from November 1996 through 2006.

Impact Area Groundwater Study Program

AMEC Earth & Environmental, Inc.
Westford, Massachusetts

FIGURE 8
Inset Map



Sources & Notes:
 Base map data from US Geological Survey
 7 1/2 minute Topographic maps.
 Source: Office of Geographic and
 Environmental Information (MassGIS)
 Commonwealth of Massachusetts
 Executive Office of Environmental Affairs

- Validated Detection Greater than or Equal to 2 and Less than 24 ppb
- Validated Detection Greater than Non-Detect and Less than 2 ppb
- Validated Non-Detect

- Validated Detection Less than 2 ppb Water Supply Well
- Proposed Water Supply Well
- +
- Current Gun Position
- Water Table Contour (Feet NGVD)
 AMEC, September 2003

Note: Map dot colors are representative of the highest historical concentration at each well and not the current concentration level.
 Historical data presented on this figure range from November 1996 through 2006.

**Perchlorate in Groundwater
 Compared to a 2 ppb Concentration
 Validated Data as of 12/29/06**

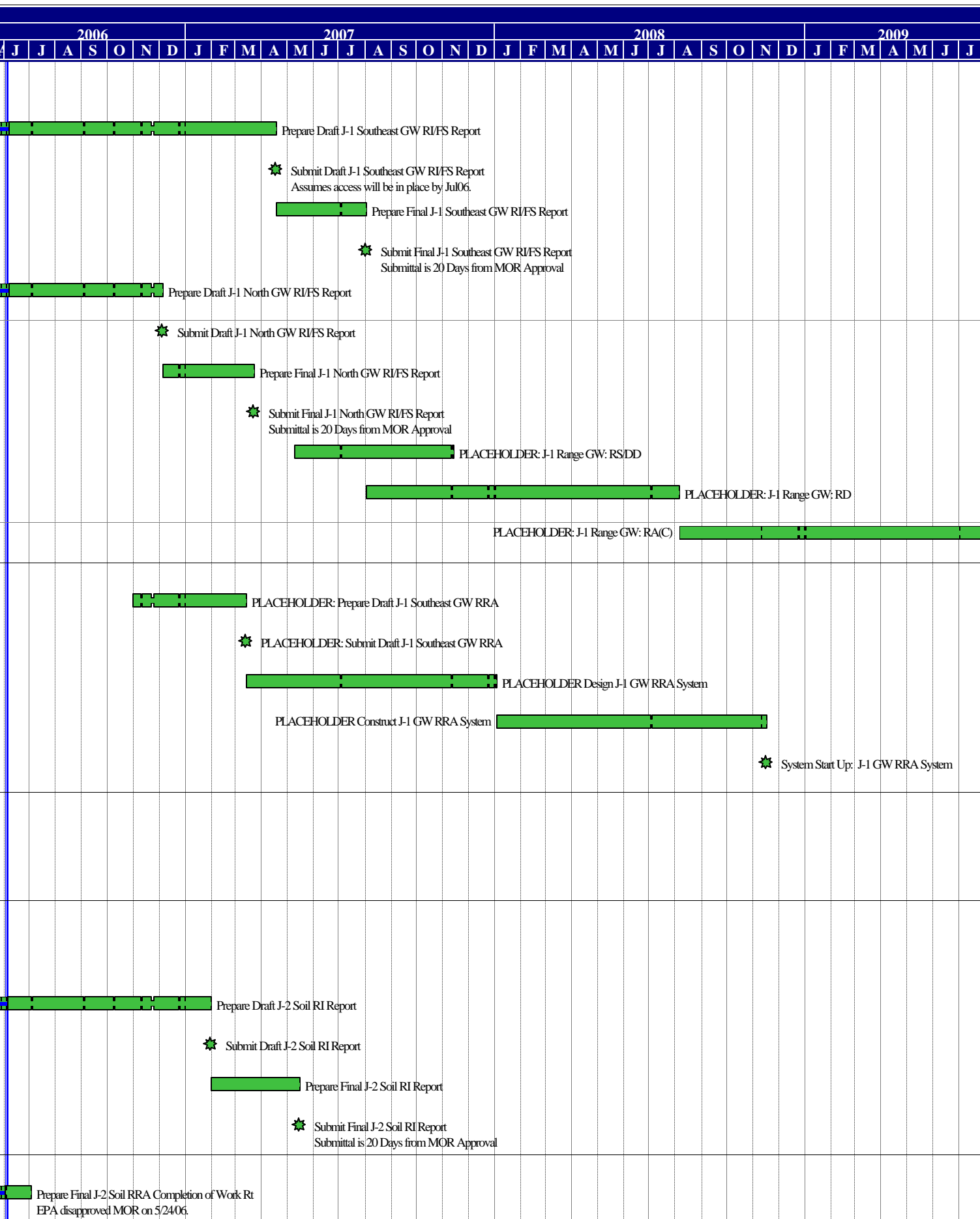


AMEC Earth & Environmental, Inc.
 Westford, Massachusetts

Inset Map B **8**

Activity ID	Activity Description	Proposed Enforceable Milestone	Orig Dur	Rem Dur	Early Start RCS 3/12/06	Early Finish RCS 3/12/06	Anticipated Start	Anticipated Finish	Variance	2006												2007												2008												2009																																																																			
										J				J				A				S				O				N				D				J				F				M				A				M				J				J				A				S				O				N				D				J				F				M				A				M				J				J			
Demo 1																																																																																																																	
Demo 1 Soil - Closure FY '06																																																																																																																	
Demo 1 Soil: RRA																																																																																																																	
00145	Prepare Final Demo 1 RRA Soil Compl of Work Rpt			153*	41*	22DEC05A	30MAY06	22DEC05A	01AUG06	-44	[Green Bar]												Prepare Final Demo 1 RRA Soil Compl of Work Rpt preparing RCL																																																																																										
00159	Submit Final RRA Demo1 Soil Compl of Work Rpt			0	0		30MAY06		01AUG06	-44	[Green Bar]												* Submit Final RRA Demo1 Soil Compl of Work Rpt Submittal is 20 Days from MOR Approval																																																																																										
Demo 1 Groundwater - Closure FY '07																																																																																																																	
Demo 1 Groundwater: Remedy Selection																																																																																																																	
31561	Prepare Red Line Strike Out D1 GW DDRS for EPA			85*	0*	05JAN06A	31MAR06	05JAN06A	28APR06A	-20																																																																																																							
31570	EPA Finalize Demo 1 GW Decision Doc/Response Sum			10	10	17APR06	28APR06	01MAY06A	16JUN06	-34	[Green Bar]												EPA Finalize Demo 1 GW Decision Doc/Response Sum																																																																																										
RD/RA Demo 1: Groundwater Operable Unit																																																																																																																	
31572	Demo 1 GW Construct Wells and Pipes: RA(C)			317*	143*	22SEP05A	29DEC06	22SEP05A	29DEC06	0	[Green Bar]												Demo 1 GW Construct Wells and Pipes: RA(C)																																																																																										
31575	PLACEHOLDER: Demo 1 GW Construct Building: RA(C)			211*	211*	13MAR06*	29DEC06	01AUG06*	31MAY07	-108	[Green Bar]												PLACEHOLDER: Demo 1 GW Construct Building: RA(C)																																																																																										
31574	Start-Up Demo 1 GW: RA(C)	31MAY07		0	0	29DEC06*		31MAY07		-108													* Start-Up Demo 1 GW: RA(C) Start Up subject to change pending finalization of building contract.																																																																																										
J-1 Range																																																																																																																	
J-1 Range Soil																																																																																																																	
J-1 Range Soil: Remedial Investigation																																																																																																																	
02118	Prepare Draft J-1 Soil RI Report			135*	135*	14SEP06	29MAR07	12JUN06	26DEC06	66	[Green Bar]												Prepare Draft J-1 Soil RI Report																																																																																										
02119	Submit Draft J-1 Soil RI Report	26DEC06		0	0		29MAR07		26DEC06	66													* Submit Draft J-1 Soil RI Report																																																																																										
02121	Prepare Final J-1 Soil RI Report			75*	75*	30MAR07	13JUL07	27DEC06	11APR07	66	[Green Bar]												Prepare Final J-1 Soil RI Report																																																																																										
02123	Submit Final J-1 Soil RI Report			0	0		13JUL07		11APR07	66													* Submit Final J-1 Soil RI Report Submittal is 20 Days from MOR Approval																																																																																										
J-1 Range Soil: Feasibility Study																																																																																																																	
02128	Scoping Meeting for J-1 Soil FSSR			1	1	30MAR07	30MAR07	27DEC06	27DEC06	66													Scoping Meeting for J-1 Soil FSSR																																																																																										
02129	J-1 Soil FS Screening Report Preparation			60	60	02APR07	22JUN07	28DEC06	22MAR07	66	[Green Bar]												J-1 Soil FS Screening Report Preparation																																																																																										
02131	Submit Draft J-1 Soil FS Screening Report	22MAR07		0	0		22JUN07		22MAR07	66													* Submit Draft J-1 Soil FS Screening Report																																																																																										
02134	Revise J-1 Soil Draft FS Screening Report			75	75	25JUN07	08OCT07	23MAR07	06JUL07	66	[Green Bar]												Revise J-1 Soil Draft FS Screening Report																																																																																										
02136	Submit Final J-1 Soil FS Screening Report			0	0		08OCT07		06JUL07	66													* Submit Final J-1 Soil FS Screening Report Submittal is 20 Days from MOR Approval																																																																																										
02137	Prepare Draft J-1 Soil FS			90	90	11SEP07	17JAN08	08JUN07	12OCT07	66	[Green Bar]												Prepare Draft J-1 Soil FS																																																																																										
02139	Submit Draft J-1 Soil FS	12OCT07		0	0		17JAN08		12OCT07	66													* Submit Draft J-1 Soil FS																																																																																										
02141	Prepare Final J-1 Soil FS			75*	75*	18JAN08	01MAY08	15OCT07	30JAN08	66	[Green Bar]												Prepare Final J-1 Soil FS																																																																																										
02143	Submit Final J-1 Soil FS			0	0		01MAY08		30JAN08	66													* Submit Final J-1 Soil FS Submittal is 20 Days from MOR Approval																																																																																										
02166	PLACEHOLDER: J-1 Range Soil: RSDD			132	132	04APR08	07OCT08	15OCT07	18APR08	121	[Green Bar]												PLACEHOLDER: J-1 Range Soil: RSDD																																																																																										

Activity ID	Activity Description	Proposed Enforceable Milestone	Orig Dur	Rem Dur	Early Start RCS 3/12/06	Early Finish RCS 3/12/06	Anticipated Start	Anticipated Finish	Variance	
J-1 Range Groundwater										
J-1 Range GW: Remedial Invest./Feasibility Study										
10066	Prepare Draft J-1 Southeast GW RI/FS Report			279*	220*	25APR06	15JAN07	13MAR06A	18APR07	-67
10070	Submit Draft J-1 Southeast GW RI/FS Report	18APR07		0	0		15JAN07		18APR07	-67
10071	Prepare Final J-1 Southeast GW RI/FS Report			75*	75*	16JAN07	30APR07	19APR07	02AUG07	-67
10090	Submit Final J-1 Southeast GW RI/FS Report			0	0		30APR07		02AUG07	-67
10116	Prepare Draft J-1 North GW RI/FS Report			186*	127*	08JUN06	04JUN07	13MAR06A	06DEC06	126
10120	Submit Draft J-1 North GW RI/FS Report	06DEC06		0	0		04JUN07		06DEC06	126
10121	Prepare Final J-1 North GW RI/FS Report			75*	75*	05JUN07	18SEP07	07DEC06	23MAR07	126
10140	Submit Final J-1 North GW RI/FS Report			0	0		18SEP07		23MAR07	126
02164	PLACEHOLDER: J-1 Range GW: RS/DD			132	132	04OCT07	09APR08	10MAY07	13NOV07	104
02174	PLACEHOLDER: J-1 Range GW: RD			260	260	09AUG07	12AUG08	03AUG07	06AUG08	4
02184	PLACEHOLDER: J-1 Range GW: RA(C)			303	303	13AUG08	15OCT09	07AUG08	09OCT09	4
J-1 Range Groundwater: RRA										
02185	PLACEHOLDER: Prepare Draft J-1 Southeast GW RRA			90	90	22JUN06*	30OCT06	01NOV06*	13MAR07	-91
02186	PLACEHOLDER: Submit Draft J-1 Southeast GW RRA	13MAR07		0	0		30OCT06		13MAR07	-91
02187	PLACEHOLDER Design J-1 GW RRA System			208	208	31OCT06	24AUG07	14MAR07	03JAN08	-91
02191	PLACEHOLDER Construct J-1 GW RRA System			225	225	27AUG07	10JUL08	04JAN08	17NOV08	-91
02188	System Start Up: J-1 GW RRA System			0	0		10JUL08		17NOV08	-91
Long Term Monitoring Sampling Program										
00534	Prepare Final J-1 Interim GW Monitoring Plan			87*	0*	28NOV05A	10APR06	28NOV05A	03APR06A	5
00535	Submit Final J-1 Interim GW Monitoring Plan	13APR06	Y	0	0		10APR06		03APR06A	5
J-2 Range										
J-2 Range Soil										
J-2 Range Soil: Remedial Investigation										
00325	Prepare Draft J-2 Soil RI Report			178*	165*	07JUL06	22JAN07	16MAY06A	31JAN07	-7
00327	Submit Draft J-2 Soil RI Report	31JAN07		0	0		22JAN07		31JAN07	-7
00329	Prepare Final J-2 Soil RI Report			75*	75*	23JAN07	07MAY07	01FEB07	16MAY07	-7
00331	Submit Final J-2 Soil RI Report			0	0		07MAY07		16MAY07	-7
J-2 Range Soil: RRA										
03213	Prepare Final J-2 Soil RRA Completion of Work Rt			153*	21*	22NOV05A	04MAY06	22NOV05A	03JUL06	-41



Activity ID	Activity Description	Proposed Enforceable Milestone	Orig Dur	Rem Dur	Early Start RCS 3/12/06	Early Finish RCS 3/12/06	Anticipated Start	Anticipated Finish	Variance	2006												2007												2008												2009												
										J	J	A	S	O	N	D	J	F	M	A	M	J	J	A	S	O	N	D	J	F	M	A	M	J	J	A	S	O	N	D	J	F	M	A	M	J	J											
										Submit Final J-2 Soils RRA Completion of Work Rt Submittal is 20 Days from MOR Approval																																																
03214	Submit Final J-2 Soils RRA Completion of Work Rt			0	0		04MAY06		03JUL06	-41																																																
J-2 Range Soil: Feasibility Study																																																										
00332	Scoping Meeting for J-2 Soil FSSR			1	1	23JAN07	23JAN07	01FEB07	01FEB07	-7	Scoping Meeting for J-2 Soil FSSR																																															
00334	J-2 Soil FS Screening Report Preparation			60	60	24JAN07	17APR07	02FEB07	26APR07	-7	█ J-2 Soil FS Screening Report Preparation																																															
00336	Submit Draft J-2 Soil FS Screening Report	26APR07		0	0		17APR07		26APR07	-7	★ Submit Draft J-2 Soil FS Screening Report																																															
00338	Revise J-2 Soil Draft FS Screening Report			75	75	18APR07	01AUG07	27APR07	10AUG07	-7	█ Revise J-2 Soil Draft FS Screening Report																																															
00340	Submit Final J-2 Soil FS Screening Report			0	0		01AUG07		10AUG07	-7	★ Submit Final J-2 Soil FS Screening Report Submittal is 20 Days from MOR Approval																																															
00342	Prepare Draft J-2 Soil FS			90	90	05JUL07	07NOV07	16JUL07	19NOV07	-7	█ Prepare Draft J-2 Soil FS																																															
00344	Submit Draft J-2 Soil FS	19NOV07		0	0		07NOV07		19NOV07	-7	★ Submit Draft J-2 Soil FS																																															
00346	Prepare Final J-2 Soil FS			75*	75*	08NOV07	25FEB08	20NOV07	05MAR08	-7	█ Prepare Final J-2 Soil FS																																															
00348	Submit Final J-2 Soil FS			0	0		25FEB08		05MAR08	-7	★ Submit Final J-2 Soil FS Submittal is 20 Days from MOR Approval																																															
00390	PLACEHOLDER: J-2 Range Soil: RS/DD			132	132	29JAN08	31JUL08	20NOV07	23MAY08	48	█ PLACEHOLDER: J-2 Range Soil: RS/DD																																															
J-2 Range Groundwater																																																										
J-2 Range GW: Remedial Invest./Feasibility Study																																																										
00347	Implement J-2 GW Field Program			711*	0*	23JUN03A	18APR06	23JUN03A	19APR06A	-1																																																
00349	Validate J-2 GW Data			656*	0*	09OCT03A	18MAY06	09OCT03A	19MAY06A	-1																																																
00699	J-2 GW Prepare Draft RI/FS			153*	127*			27APR06A	06DEC06	0	█ J-2 GW Prepare Draft RI/FS																																															
00352	Submit Draft J-2 GW RI/FS Report	06DEC06		0	0		11OCT06		06DEC06	-37	★ Submit Draft J-2 GW RI/FS Report																																															
00353	Prepare Final J-2 GW RI/FS Report			75*	75*	12OCT06	31JAN07	07DEC06	23MAR07	-37	█ Prepare Final J-2 GW RI/FS Report																																															
00355	Submit Final J-2 GW RI/FS Report			0	0		31JAN07		23MAR07	-37	★ Submit Final J-2 GW RI/FS Report Submittal is 20 Days from MOR Approval																																															
00367	PLACEHOLDER: J-2 Range GW: RS/DD			132	132	11SEP07	17MAR08	22JAN07	25JUL07	165	█ PLACEHOLDER: J-2 Range GW: RS/DD																																															
00368	PLACEHOLDER: J-2 Range GW: RD			169	169	18JUN07	13FEB08	26FEB07	19OCT07	80	█ PLACEHOLDER: J-2 Range GW: RD																																															
00369	PLACEHOLDER: J-2 Range GW: RA(C)			306	306	14FEB08	22APR09	22OCT07	30DEC08	80	█ PLACEHOLDER: J-2 Range GW: RA(C)																																															
J-2 Range Groundwater: RRA																																																										
00403	Construction J-2 GW RRA Sys (N.Plume only)			317*	143*	22SEP05A	29DEC06	22SEP05A	29DEC06	0	█ Construction J-2 GW RRA Sys (N.Plume only)																																															
00404	System Start Up: J-2 GW RRA Sys (N.Plume only)	29DEC06		0	0		29DEC06*		29DEC06*	0	★ System Start Up: J-2 GW RRA Sys (N.Plume only)																																															
Long Term Monitoring Sampling Program																																																										
00320	Prepare Final J-2E Interim GW Monitoring Plan			84*	0*	14DEC05A	26APR06	14DEC05A	14APR06A	8																																																
00322	Submit Final J-2E Interim GW Monitoring Plan	24APR06	Y	0	0		26APR06		14APR06A	8																																																



Start Date 01FEB03
 Finish Date 20DEC69
 Data Date 04JUN06
 Run Date 15JUN06 08:25

U142
 Sheet 3 of 12
 RCS - by Area w/TARGET bars
 as of 04JUN06

milestone colors
 █ Milestone > 90 days Out
 █ Milestone < 90 days Out

Activity ID	Activity Description	Proposed Enforceable Milestone	Orig Dur	Rem Dur	Early Start RCS 3/12/06	Early Finish RCS 3/12/06	Anticipated Start	Anticipated Finish	Variance	2006												2007												2008												2009												
										J	J	A	S	O	N	D	J	F	M	A	M	J	J	A	S	O	N	D	J	F	M	A	M	J	J	A	S	O	N	D	J	F	M	A	M	J	J											
J-3 Range																																																										
J-3 Range Soils - Closure FY '07																																																										
J-3 Range Soil: Remedial Investigation																																																										
02221	Prepare Final J-3 Soil RI Report			117*	61*	16MAR06	29JUN06	16MAR06A	29AUG06	-42	Prepare Final J-3 Soil RI Report awaiting agency comments (overdue 05APR06)																																															
02223	Submit Final J-3 Soil RI Report			0	0		29JUN06		29AUG06	-42	* Submit Final J-3 Soil RI Report Submittal is 20 Days from MOR Approval																																															
02300	PLACEHOLDER: J-3 Range Soil: FS			184*	184*	02JUN06	12JUL07	12JUL06	04APR07	70	PLACEHOLDER: J-3 Range Soil: FS																																															
02302	PLACEHOLDER: J-3 Range Soil: RD			95	95	19APR07	30AUG07	11JAN07	23MAY07	70	PLACEHOLDER: J-3 Range Soil: RD																																															
02301	PLACEHOLDER: J-3 Range Soil: RS/DD			132	132	14JUN07	18DEC07	11JAN07	16JUL07	110	PLACEHOLDER: J-3 Range Soil: RS/DD																																															
02304	PLACEHOLDER: J-3 Range Soil: RA(C)			155	155	31AUG07	08APR08	24MAY07	31DEC07	70	PLACEHOLDER: J-3 Range Soil: RA(C)																																															
J-3 Range Groundwater																																																										
J-3 Range GW: Remedial Invest./Feasibility Study																																																										
02234	Implement J-3 GW Field Program			484*	0*	03APR04A	22MAR06	03APR04A	28MAR06A	-4																																																
02236	Validate J-3 GW Data			442*	0*	01AUG04A	10MAY06	01AUG04A	05MAY06A	3																																																
10000	Prepare Draft J-3 GW RI/FS Report			186*	127*	23MAR06	14MAR07	13MAR06A	06DEC06	68	Prepare Draft J-3 GW RI/FS Report																																															
10002	Submit Draft J-3 GW RI/FS Report	06DEC06		0	0		14MAR07		06DEC06	68	* Submit Draft J-3 GW RI/FS Report																																															
10009	Prepare Final J-3 GW RI/FS Report			75*	75*	15MAR07	27JUN07	07DEC06	23MAR07	68	Prepare Final J-3 GW RI/FS Report																																															
10022	Submit Final J-3 GW RI/FS Report			0	0		27JUN07		23MAR07	68	* Submit Final J-3 GW RI/FS Report Submittal is 20 Days from MOR Approval																																															
02258	PLACEHOLDER: J-3 Range GW: RS/DD			130	130	09AUG07	13FEB08	29DEC06	29JUN07	159	PLACEHOLDER: J-3 Range GW: RS/DD																																															
02259	PLACEHOLDER: J-3 Range GW: RD			134	134	06JUN07	28MAR08	26FEB07	31AUG07	147	PLACEHOLDER: J-3 Range GW: RD																																															
02260	PLACEHOLDER: J-3 Range GW: RA(C)			213	213	31MAR08	12FEB09	03SEP07	30JUN08	159	PLACEHOLDER: J-3 Range GW: RA(C)																																															
J-3 Range Groundwater: RRA																																																										
03365	Construct J-3 GW RRA Treatment System			317*	143*	22SEP05A	29DEC06	22SEP05A	29DEC06	0	Construct J-3 GW RRA Treatment System																																															
03366	Start Up J-3 GW RRA Treatment System	29DEC06		0	0		29DEC06*		29DEC06*	0	* Start Up J-3 GW RRA Treatment System																																															
L Range																																																										
L Range Soils - Closure FY '06																																																										
L Range Soil: Remedial Investigation																																																										
02316	Prepare Final L Soil RI Report			179*	61*	14DEC05A	06JUN06	14DEC05A	29AUG06	-59	Prepare Final L Soil RI Report FS is not required since soil contaminants are expected to pose no significant risk awaiting agency comments (overdue 6JAN06) Date may change pending UXO evaluation/field wk.																																															
02317	Submit Final L Soil RI Report			0	0		06JUN06		29AUG06	-59	* Submit Final L Soil RI Report Submittal is 20 Days from MOR Approval																																															



Activity ID	Activity Description	Proposed Enforceable Milestone	Orig Dur	Rem Dur	Early Start RCS 3/12/06	Early Finish RCS 3/12/06	Anticipated Start	Anticipated Finish	Variance	2006												2007												2008												2009																																																																																							
										J				J				A				S				O				N				D				J				F				M				A				M				J				J				A				S				O				N				D				J				F				M				A				M				J				J				A				S				O				N				D			
L Range Groundwater - Closure FY '07																																																																																																																																					
L Range Groundwater: Remedial Investigation																																																																																																																																					
0600	Prepare Draft L.GW Risk Assessment Report			130*	0*	28NOV05A	26APR06	28NOV05A	15MAY06A	-13																																																																																																																											
0602	Submit Draft L.GW Risk Assessment Report	26APR06	N	0	0		26APR06		15MAY06A	-13																																																																																																																											
0622	Prepare Final L.GW Risk Assessment Report			74*	61*	27APR06	11AUG06	16MAY06A	29AUG06	-12																																																																																																																											
0624	Submit Final L.GW Risk Assessment Report			0	0		11AUG06		29AUG06	-12																																																																																																																											
L-Range Groundwater Feasibility Study																																																																																																																																					
0703	Prepare Draft L.GW FS			121*	121*	23AUG06	04JAN07	27JUN06	20DEC06	9																																																																																																																											
0705	Submit Draft L.GW FS	20DEC06		0	0		04JAN07		20DEC06	9																																																																																																																											
0724	Prepare Final L.GW FS			75*	75*	05JAN07	19APR07	21DEC06	06APR07	9																																																																																																																											
0726	Submit Final L.GW FS			0	0		19APR07		06APR07	9																																																																																																																											
0727	PLACEHOLDER: GW L-Range RSDD			151	151			01FEB07	31AUG07	0																																																																																																																											
Long Term Monitoring Sampling Program																																																																																																																																					
00289	Prepare Final L Interim GW Monitoring Plan			154*	41*	21DEC05A	06JUN06	21DEC05A	01AUG06	-39																																																																																																																											
00291	Submit Final L Interim GW Monitoring Plan			0	0		06JUN06		01AUG06	-39																																																																																																																											
Central Impact Area																																																																																																																																					
CIA Soil																																																																																																																																					
CIA Soil: Remedial Investigation																																																																																																																																					
03011	Field Investigations Soil FI			97	26	19NOV03A	27APR06	19NOV03A	11JUL06	-51																																																																																																																											
03014	Lab Analysis/Data Validation Soil FI			144	70	26DEC03A	23JUN06	26DEC03A	12SEP06	-55																																																																																																																											
00261	Prepare Draft CIA Soil RI Report			725*	182*	04APR04A	29DEC06	04APR04A	23FEB07	-39																																																																																																																											
00262	Submit Draft Final CIA Soil RI Report	23FEB07		0	0		29DEC06		23FEB07	-39																																																																																																																											
00263	Prepare Final CIA Soil RI Report			75	75	02JAN07	16APR07	26FEB07	08JUN07	-39																																																																																																																											
00292	Submit Final CIA Soil RI Report			0	0		16APR07		08JUN07	-39																																																																																																																											
22146	Prepare Final Post Screen Invest CIA SourceAreaWP			223*	23*	16AUG05A	12APR06	16AUG05A	06JUL06	-59																																																																																																																											
22148	Submit Final Post Screen Invest CIA SourceAreaWP			0	0		12APR06		06JUL06	-59																																																																																																																											
22150	PLACEHOLDER: Post Screening Invest CIA Field Prgm			236*	130*	03JAN06A	25SEP06	03JAN06A	11DEC06	-51																																																																																																																											
CIA Soil: RRA Targets 23/42																																																																																																																																					
03122	Prepare Final Draft CIA Compl of Wk Target 23/42			242*	45*	19AUG05A	07JUN06	19AUG05A	07AUG06	-42																																																																																																																											
03123	Submit Final CIA Completion of WkRt Target 23/42			0	0		07JUN06		07AUG06	-42																																																																																																																											

milestone colors
 Milestone > 90 days Out
 Milestone < 90 days Out

Activity ID	Activity Description	Proposed Enforceable Milestone	Orig Dur	Rem Dur	Early Start RCS 3/12/06	Early Finish RCS 3/12/06	Anticipated Start	Anticipated Finish	Variance	2006												2007												2008												2009												
										J	J	A	S	O	N	D	J	F	M	A	M	J	J	A	S	O	N	D	J	F	M	A	M	J	J	A	S	O	N	D	J	F	M	A	M	J	J	A	S	O	N	D						
Treatability Study											Treatability Study (Includes Technologies for CIA and Gun & Mortar Positions) Schedule subject to change pending approval of work plan.																																															
03083	Treatability Study			899*	524*	06DEC04A	03JAN08	06DEC04A	23JUN08	-122																																																
CIA Groundwater																																																										
CIA Groundwater: Remedial Investigation																																																										
02030	Prepare Final CIA GW Report			629*	75*	19MAR04A	26JUN06	19MAR04A	19SEP06	-59	Prepare Final CIA GW Report awaiting DEP comments																																															
02035	Submit Final CIA GW Rpt Addendum (TM 01-6)			0	0		26JUN06		19SEP06	-59	Submit Final CIA GW Rpt Addendum (TM 01-6) EPA letter 11/2/05 removed ENF deadline.																																															
32579	PLACEHOLDER: CIA GW: RD			261	261	07DEC07	11DEC08	04FEB08	06FEB09	-39	PLACEHOLDER: CIA GW: RD																																															
32580	PLACEHOLDER: CIA GW: RA(C)			427	427	12DEC08	11AUG10	09FEB09	05OCT10	-39	PLACEHOLDER: CIA GW: RA(C)																																															
Long Term Monitoring Sampling Program																																																										
LT3020	Prepare Final CIA Interim GW Monitoring Plan			152*	61*	25JAN06A	06JUN06	25JAN06A	29AUG06	-59	Prepare Final CIA Interim GW Monitoring Plan preparing RCL to DEP comments																																															
LT3022	Submit Final CIA Interim GW Monitoring Plan			0	0		06JUN06		29AUG06	-59	Submit Final CIA Interim GW Monitoring Plan																																															
CIA Soil & GW: Feasibility Study																																																										
22110	CIA Soil & GW FS Screening Report Preparation			409*	123*	14APR05A	30JUN06	14APR05A	30NOV06	-103	CIA Soil & GW FS Screening Report Preparation																																															
22120	Submit Draft CIA Soil & GW FS Screening Report	30NOV06		0	0		30JUN06		30NOV06	-103	Submit Draft CIA Soil & GW FS Screening Report Schedule to be revised after scoping mt w/Agency A TBD date was requested on 9/19/05.																																															
22398	Model FS Screening Report Scenarios			124	153	16JUN03A	17OCT06	16JUN03A	15JAN07	-59	Model FS Screening Report Scenarios Schedule to be revised after scoping meeting with Agencies.																																															
22130	Prepare Final CIA Draft Soil & GW FS Screen Rpt			75	75	03JUL06	18OCT06	01DEC06	19MAR07	-103	Prepare Final CIA Draft Soil & GW FS Screen Rpt																																															
22140	Submit Final CIA Soil & GW FS Screening Report			0	0		18OCT06		19MAR07	-103	Submit Final CIA Soil & GW FS Screening Report Submittal is 20 days from MOR Approval																																															
22210	Prepare Draft CIA Soil & GW FS			135	135	03JAN07	11JUL07	27FEB07	04SEP07	-39	Prepare Draft CIA Soil & GW FS																																															
22220	Submit Draft CIA Soil & GW FS	04SEP07		0	0		11JUL07		04SEP07	-39	Submit Draft CIA Soil & GW FS																																															
22230	Prepare Final CIA Soil & GW FS			105	105	12JUL07	06DEC07	05SEP07	01FEB08	-39	Prepare Final CIA Soil & GW FS																																															
22240	Submit Final CIA Soil & GW FS			0	0		06DEC07		01FEB08	-39	Submit Final CIA Soil & GW FS Submittal is 20 Days from MOR Approval																																															
CIA Soil & GW: Remedy Selection																																																										
32505	CIA Soil & GW RS Plan Scoping Meeting	05SEP07		1	1	12JUL07	12JUL07	05SEP07	05SEP07	-39	CIA Soil & GW RS Plan Scoping Meeting																																															
32510	Prepare Draft CIA Soil & GW Remedy Selection Pln			60	60	13JUL07	04OCT07	06SEP07	29NOV07	-39	Prepare Draft CIA Soil & GW Remedy Selection Pln																																															
32520	Revise Draft CIA Soil & GW Remedy Selection Plan			75	75	05OCT07	22JAN08	30NOV07	17MAR08	-39	Revise Draft CIA Soil & GW Remedy Selection Plan																																															
32530	Submit CIA Soil & GW Remedy Selection Plan	17MAR08		0	0		22JAN08		17MAR08	-39	Submit CIA Soil & GW Remedy Selection Plan																																															
32540	CIA Soil & GW Public Comment Period for RS			21	21	23JAN08	20FEB08	18MAR08	15APR08	-39	CIA Soil & GW Public Comment Period for RS																																															
32550	Draft CIA Soil & GW Decision Doc/ Resp Summary			64	64	21FEB08	20MAY08	16APR08	15JUL08	-39	Draft CIA Soil & GW Decision Doc/ Resp Summary																																															

Start Date 01FEB03
 Finish Date 20DEC69
 Data Date 04JUN06
 Run Date 15JUN06 08:26

U142
 Sheet 6 of 12
 RCS - by Area w/TARGET bars
 as of 04JUN06

milestone colors
 Milestone > 90 days Out
 Milestone < 90 days Out

Activity ID	Activity Description	Proposed Enforceable Milestone	Orig Dur	Rem Dur	Early Start RCS 3/12/06	Early Finish RCS 3/12/06	Anticipated Start	Anticipated Finish	Variance
32560	EPA Prepare CIA Final Draft Dec Doc/Response Sum		20	20	21MAY08	17JUN08	16JUL08	12AUG08	-39
32570	EPA Submit CIA Final Decision Doc/Response Sum		0	0		17JUN08		12AUG08	-39
32571	PLACEHOLDER: CIA Soil: RD		303	303	08NOV07	14JAN09	07JAN08	10MAR09	-39
32578	PLACEHOLDER: CIA Soil: RA(C)		758	758	15JAN09	27DEC11	11MAR09	21FEB12	-39

Western Boundary

Western Boundary - Closure FY '06

Western Boundary: Remedial Investigation

03473	Prepare Western Boundary Draft RI Report		560*	34*	28APR04A		28APR04A	21JUL06	-93
03483	Submit Western Boundary Draft RI Report	21JUL06	0	0		09JUN06		21JUL06	-29
03494	Prepare Final Western Boundary RI Report		75*	75*	12JUN06	26SEP06	24JUL06	07NOV06	-29
03495	Submit Final Western Boundary RI Report		0	0		26SEP06		07NOV06	-29
03496	PLACEHOLDER: Western Boundary FS		132	132	12JUN06	20DEC06	24JUL06	01FEB07	-29

Northwest Corner

Northwest Corner - Closure FY '07

Northwest Corner: Remedial Investigation

03446	Prepare Final Northwest Corner RI Rpt		140*	65*	16FEB06A	12JUN06	16FEB06A	08SEP06	-59
03448	Submit Final Northwest Corner RI Rpt		0	0		12JUN06		08SEP06	-59

Long Term Monitoring Sampling Program

N01520	Prepare Final NWC Interim GW Monitoring Plan		177*	51*	02DEC05A	06JUN06	02DEC05A	15AUG06	-49
N01522	Submit Final NWC Interim GW Monitoring Plan		0	0		06JUN06		15AUG06	-49

Northwest Corner: Feasibility Study

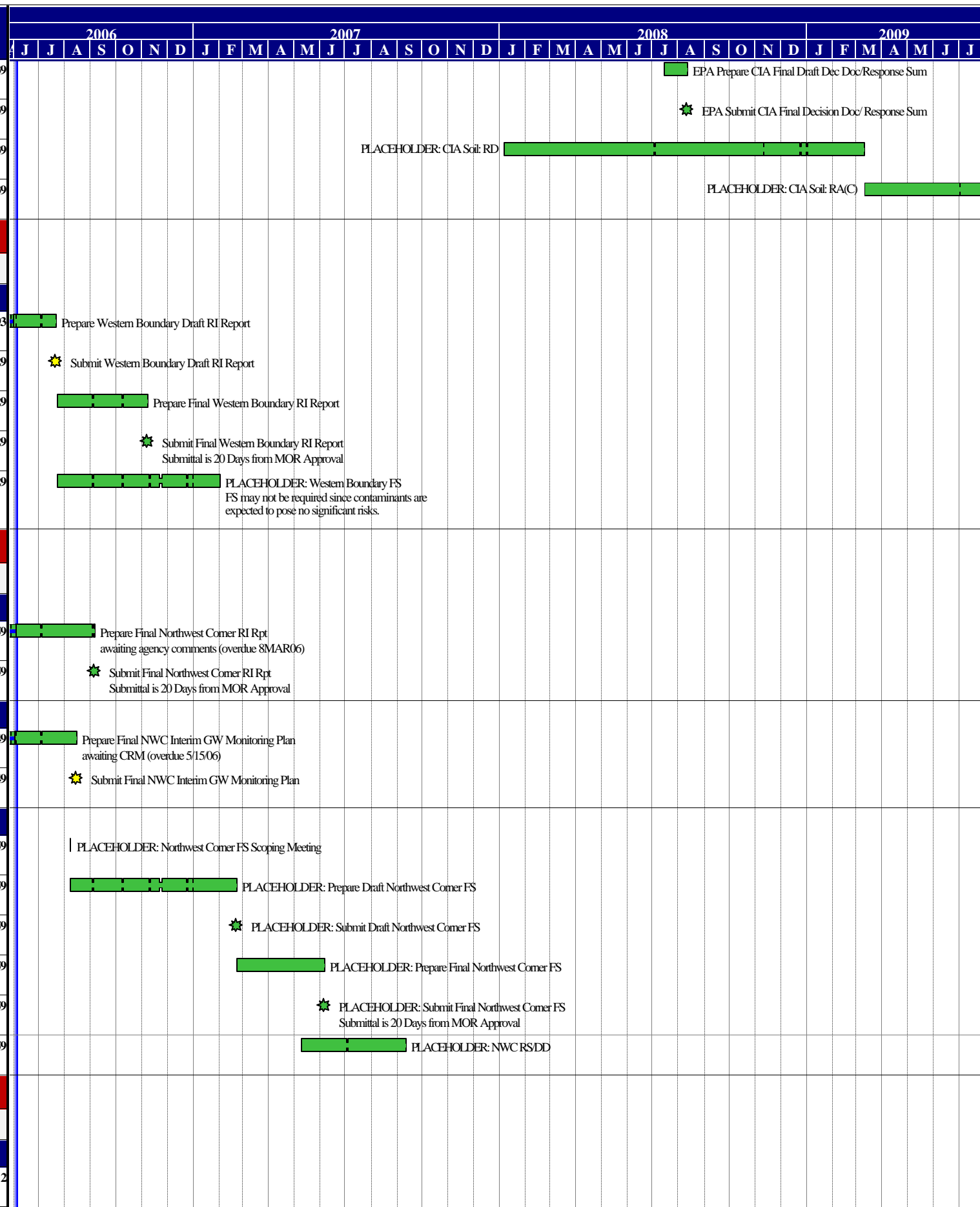
03450	PLACEHOLDER: Northwest Corner FS Scoping Meeting	08AUG06	1	1	15MAY06	15MAY06	08AUG06	08AUG06	-59
03451	PLACEHOLDER: Prepare Draft Northwest Corner FS		135	135	16MAY06	29NOV06	09AUG06	22FEB07	-59
03452	PLACEHOLDER: Submit Draft Northwest Corner FS		0	0		29NOV06		22FEB07	-59
03453	PLACEHOLDER: Prepare Final Northwest Corner FS		75	75	29NOV06	15MAR07	22FEB07	06JUN07	-59
03454	PLACEHOLDER: Submit Final Northwest Corner FS		0	0		15MAR07		06JUN07	-59
03455	PLACEHOLDER: NWC RSDD		88	88	16FEB07	19JUN07	10MAY07	11SEP07	-59

Demo 2

Demo 2 Groundwater - Closure FY '07

Demo 2 Groundwater: Remedial Investigation

01564	Implement Demo 2 RI Field Program		189*	0*	16JUN05A	22MAR06	16JUN05A	20MAR06A	2
-------	-----------------------------------	--	------	----	----------	---------	----------	----------	---



milestone colors

- Milestone > 90 days Out
- Milestone < 90 days Out



Activity ID	Activity Description	Proposed Enforceable Milestone	Orig Dur	Rem Dur	Early Start RCS 3/12/06	Early Finish RCS 3/12/06	Anticipated Start	Anticipated Finish	Variance	2006												2007												2008												2009												
										J	J	A	S	O	N	D	J	F	M	A	M	J	J	A	S	O	N	D	J	F	M	A	M	J	J	A	S	O	N	D	J	F	M	A	M	J	J											
01565	Lab Analysis Data Validation Demo 2			149*	0*	14SEP05A	14APR06	14SEP05A	19APR06A	-3																																																
01558	Prepare Draft Demo 2 GW RI Report			54*	0*	17APR06	01MAY06	20MAR06A	30MAY06A	-20	Prepare Draft Demo 2 GW RI Report																																															
01559	Submit Draft Demo 2 GW RI Report	11MAY06	N	0	0		01MAY06		30MAY06A	-20	Submit Draft Demo 2 GW RI Report This report will be finalized as part of a combined RI/FS.																																															
Long Term Monitoring Sampling Program																																																										
D20170	Prepare Final Demo 2 Interim GW Monitoring Plan			160*	25*	17NOV05A	08MAY06	17NOV05A	10JUL06	-43	Prepare Final Demo 2 Interim GW Monitoring Plan awaiting MOR approval (overdue 9FEB06)																																															
D20172	Submit Final Demo 2 Interim GW Monitoring Plan			0	0		08MAY06		10JUL06	-43	Submit Final Demo 2 Interim GW Monitoring Plan																																															
Demo 2 GW: Remedial Invest./Feasibility Study																																																										
01563	Scoping Meeting for Demo 2 GW FS			1	1	06JUL06	06JUL06	22JUN06*	22JUN06	9	Scoping Meeting for Demo 2 GW FS																																															
01574	Prepare Draft Demo 2 GW RI/FS			104	104	07NOV06	21MAY07	23JUN06	21NOV06	125	Prepare Draft Demo 2 GW RI/FS																																															
01577	Submit Draft Demo 2 GW RI/FS	21NOV06		0	0		21MAY07		21NOV06	125	Submit Draft Demo 2 GW RI/FS																																															
01578	Prepare Final Demo 2 GW RI/FS			75	75	22MAY07	04SEP07	22NOV06	12MAR07	125	Prepare Final Demo 2 GW RI/FS																																															
01603	Submit Final Demo 2 GW RI/FS			0	0		04SEP07		12MAR07	125	Submit Final Demo 2 GW RI/FS Submittal is 20 Days from MOR Approval																																															
Demo 2 Groundwater: Remedy Selection																																																										
01605	GWRS Plan Scoping Meeting			1	1	08AUG07	08AUG07	13FEB07	13FEB07	125	GWRS Plan Scoping Meeting																																															
01608	Prepare Draft Remedy Selection Plan			30	30	09AUG07	19SEP07	14FEB07	27MAR07	125	Prepare Draft Remedy Selection Plan																																															
01609	Revise Draft Remedy Selection Plan			38	38	20SEP07	13NOV07	28MAR07	18MAY07	125	Revise Draft Remedy Selection Plan																																															
01611	Submit Remedy Selection Plan	18MAY07		0	0		13NOV07		18MAY07	125	Submit Remedy Selection Plan																																															
01613	Public Comment Period			21	21	14NOV07	12DEC07	21MAY07	18JUN07	125	Public Comment Period																																															
01615	Draft Decision Doc/ Response Summary	27JUN07		7	7	13DEC07	21DEC07	19JUN07	27JUN07	125	Draft Decision Doc/ Response Summary																																															
01623	EPA Prepare Final Draft Dec Doc/Response Sum			6	6	24DEC07	02JAN08	28JUN07	06JUL07	125	EPA Prepare Final Draft Dec Doc/Response Sum																																															
01624	EPA Submit Final Decision Doc/ Response Summary			0	0		02JAN08		06JUL07	125	EPA Submit Final Decision Doc/ Response Summary																																															
Gun & Mortar																																																										
Gun & Mortar Soils																																																										
Gun & Mortar Soils: Remedial Investigation																																																										
01200	Prepare Final G&M Soil GP-6 Letter Report			120*	0*	05JUL05A	23DEC05A	05JUL05A	23DEC05A	0																																																
01210	Submit Final G&M Soil GP-6 Letter Report			0	0		23DEC05A		23DEC05A	0																																																
00606	Prepare Draft G&M GW & Soil RI Workplan			145*	23*	08DEC05A	12MAY06	08DEC05A	06JUL06	-37	Prepare Draft G&M GW & Soil RI Workplan																																															
00607	Submit Draft G&M GW & Soil RI Workplan	06JUL06		0	0		12MAY06		06JUL06	-37	Submit Draft G&M GW & Soil RI Workplan																																															
00608	Prepare Final G&M GW & Soil RI Workplan			75	75	15MAY06	29AUG06	07JUL06	23OCT06	-37	Prepare Final G&M GW & Soil RI Workplan																																															
00609	Submit Final G&M GW & Soil RI Workplan			0	0		29AUG06		23OCT06	-37	Submit Final G&M GW & Soil RI Workplan Submittal is 20 Days from MOR Approval																																															

Activity ID	Activity Description	Proposed Enforceable Milestone	Orig Dur	Rem Dur	Early Start RCS 3/12/06	Early Finish RCS 3/12/06	Anticipated Start	Anticipated Finish	Variance	2006												2007												2008												2009												
										J	J	A	S	O	N	D	J	F	M	A	M	J	J	A	S	O	N	D	J	F	M	A	M	J	J	A	S	O	N	D	J	F	M	A	M	J	J											
Former A Range																																																										
Former A Range - Closure FY '07																																																										
Former A Range: Remedial Investigation																																																										
01586	Prepare Draft Former A Range RI Report			144*	83*	09MAR06A	03AUG06	09MAR06A	29SEP06	-40	[Green bar]												Prepare Draft Former A Range RI Report																																			
01587	Submit Draft Former A Range RI Report	29SEP06		0	0		03AUG06		29SEP06	-40	[Green bar]												* Submit Draft Former A Range RI Report																																			
01588	Prepare Final Former A Range RI Report			75	75	04AUG06	21NOV06	02OCT06	22JAN07	-40	[Green bar]												Prepare Final Former A Range RI Report																																			
01589	Submit Final Former A Range RI Report			0	0		21NOV06		22JAN07	-40	[Green bar]												* Submit Final Former A Range RI Report Submittal is 20 Days from MOR Approval																																			
01702	PLACEHOLDER: Former A: FSSR/FS			233	233	04AUG06	22NOV07	02OCT06	31AUG07	58	[Green bar]												PLACEHOLDER: Former A: FSSR/FS																																			
01703	PLACEHOLDER: Former A: RSDD			129	129			01JUN07	30NOV07	0	[Green bar]												PLACEHOLDER: Former A: RSDD																																			
Former K Range																																																										
Former K Range - Closure FY '06																																																										
Former K Range: Remedial Investigation																																																										
01551	PLACEHOLDER: Supplemental Field Investigation			90	90			26JUN06	01NOV06	0	[Green bar]												PLACEHOLDER: Supplemental Field Investigation Assumes (4) drive points to be installed.																																			
01510	Prepare Final Former K Range RI Report			268*	125*	04NOV05A	28APR06	04NOV05A	04DEC06	-149	[Green bar]												Prepare Final Former K Range RI Report Note: Draft recommends that NORRA is required, resolving agency comments																																			
01511	Submit Final Former K Range RI Report			0	0		28APR06		04DEC06	-149	[Green bar]												* Submit Final Former K Range RI Report Submittal is 20 Days from MOR Approval																																			
01720	PLACEHOLDER: Former K: FSSR/FS			331	331	03APR06	23JUL07	26JUN06	12OCT07	-59	[Green bar]												PLACEHOLDER: Former K: FSSR/FS																																			
Long Term Monitoring Sampling Program																																																										
01550	Prepare Final K Range Interim GW Monitoring Plan			174*	61*	21DEC05A	06JUN06	21DEC05A	29AUG06	-59	[Green bar]												Prepare Final K Range Interim GW Monitoring Plan awaiting agency comments (overdue 12JAN06)																																			
01552	Submit Final K Range Interim GW Monitoring Plan			0	0		06JUN06		29AUG06	-59	[Green bar]												* Submit Final K Range Interim GW Monitoring Plan Submittal is 20 days from MOR Approval																																			
Phase II B																																																										
Phase II (b) - Closure FY '06																																																										
Phase II (b): Remedial Investigation																																																										
01560	Prepare Final 2b RI Report			866*	65*	01APR03A	12JUN06	01APR03A	05SEP06	-59	[Green bar]												Prepare Final 2b RI Report awaiting agency comments (overdue 4/03)																																			
01570	Submit Final Phase 2b RI Rpt (TM 02-6)			0	0		12JUN06		05SEP06	-59	[Green bar]												* Submit Final Phase 2b RI Rpt (TM 02-6) Submittal is 20 Days from MOR Approval																																			
Ammunition Supply Point																																																										
Ammunition Supply Point - Closure FY '06																																																										
Ammunition Supply Point: RRA																																																										
00902	Prepare Final ASP RRA Work Plan			47	47	01FEB06A	16MAY06	01FEB06A	09AUG06	-59	[Green bar]												Prepare Final ASP RRA Work Plan Duration assumes accelerated reviews: EPA 10 days, RCL 10 days, Approve CRM 10 days, MOR 5 days, Approve MOR 2 days, Final 20 days, awaiting RCL approval or CRM (overdue 8MAY06)																																			
00903	Submit Final ASP RRA Work Plan			0	0		16MAY06		09AUG06	-59	[Green bar]												* Submit Final ASP RRA Work Plan Submittal is 20 Days from MOR Approval																																			
00904	PLACEHOLDER: Implement ASP RRA Field Program			6	6	19APR06	31MAY06	21AUG06	28AUG06	-62	[Green bar]												PLACEHOLDER: Implement ASP RRA Field Program																																			

milestone colors

- [Green bar] Milestone > 90 days Out
- [Yellow bar] Milestone < 90 days Out

Activity ID	Activity Description	Proposed Enforceable Milestone	Orig Dur	Rem Dur	Early Start RCS 3/12/06	Early Finish RCS 3/12/06	Anticipated Start	Anticipated Finish	Variance	2006												2007												2008												2009											
										J	J	A	S	O	N	D	J	F	M	A	M	J	J	A	S	O	N	D	J	F	M	A	M	J	J	A	S	O	N	D	J	F	M	A	M	J	J										
01607	Validate Data SAR RI Field Program		36*	36*	28MAR06	17MAY06	21JUN06	10AUG06	-59	█ Validate Data SAR RI Field Program																																															
01598	Prepare Draft SAR RI Report		135	135	30MAR06	10OCT06	22JUN06	08JAN07	-59	█ Prepare Draft SAR RI Report																																															
01601	Submit Draft SAR RI Report	08JAN07	0	0		10OCT06		08JAN07	-59	★ Submit Draft SAR RI Report																																															
01602	Prepare Final SAR RI Report		75	75	11OCT06	30JAN07	09JAN07	23APR07	-59	█ Prepare Final SAR RI Report																																															
01599	Submit Final SAR RI Report		0	0		30JAN07		23APR07	-59	★ Submit Final SAR RI Report Submittal is 20 Days from MOR Approval																																															
01756	PLACEHOLDER: SAR: FS		223	223	11OCT06	27AUG07	09JAN07	19NOV07	-59	█ PLACEHOLDER: SAR: FS																																															
Small Arms Range: RRA																																																									
01800	Prepare Draft SAR RRA Work Plan		20	20	24MAR06	04MAY06	02OCT06*	30OCT06	-123	█ Prepare Draft SAR RRA Work Plan																																															
01802	Submit Draft SAR RRA Work Plan	30OCT06	0	0		04MAY06		30OCT06	-123	★ Submit Draft SAR RRA Work Plan																																															
01804	Prepare Final SAR RRA Work Plan		47	47	05MAY06	21AUG06	31OCT06	10JAN07	-95	█ Prepare Final SAR RRA Work Plan Assumes accelerated review cycle.																																															
01806	Submit Final SAR RRA Work Plan		0	0		21AUG06		10JAN07	-95	★ Submit Final SAR RRA Work Plan Submittal is 20 Days from MOR Approval																																															
01808	PLACEHOLDER: Implement SAR RRA Field Program		10	10	25JUL06	05SEP06	12DEC06	26DEC06	-75	█ PLACEHOLDER: Implement SAR RRA Field Program																																															
01810	Lab Analysis Data Validation SAR RRA		20	20	14AUG06	24OCT06	03JAN07	30JAN07	-65	█ Lab Analysis Data Validation SAR RRA																																															
01812	Prepare Draft SAR RRA Completion of Work Rt		40	40	25OCT06	02JAN07	31JAN07	27MAR07	-60	█ Prepare Draft SAR RRA Completion of Work Rt FS will be added in the future, if the RRA does not reduce contaminants to pose no significant risk.																																															
01814	Submit Draft SAR RRA Completion of Work Rt	27MAR07	0	0		02JAN07		27MAR07	-60	★ Submit Draft SAR RRA Completion of Work Rt																																															
01816	Prepare Final SAR RRA Completion of Work Rt		47	47	03JAN07	16APR07	28MAR07	31MAY07	-33	█ Prepare Final SAR RRA Completion of Work Rt Assumes accelerated review cycle.																																															
01818	Submit Final SAR RRA Completion of Work Rt		0	0		16APR07		31MAY07	-33	★ Submit Final SAR RRA Completion of Work Rt Submittal is 20 Days from MOR Approval																																															
Training Area																																																									
Training Areas																																																									
Training Areas																																																									
00890	Prepare Final Training Areas Data Summary Report		254	25	15FEB05A	14APR06	15FEB05A	10JUL06	-59	█ Prepare Final Training Areas Data Summary Report awaiting MOR approval (overdue 14DEC05)																																															
00895	Submit Final Training Areas Data Summary Report		0	0		14APR06		10JUL06	-59	★ Submit Final Training Areas Data Summary Report Submittal is 20 Days from MOR Approval																																															

milestone colors
 Milestone > 90 days Out
 Milestone < 90 days Out