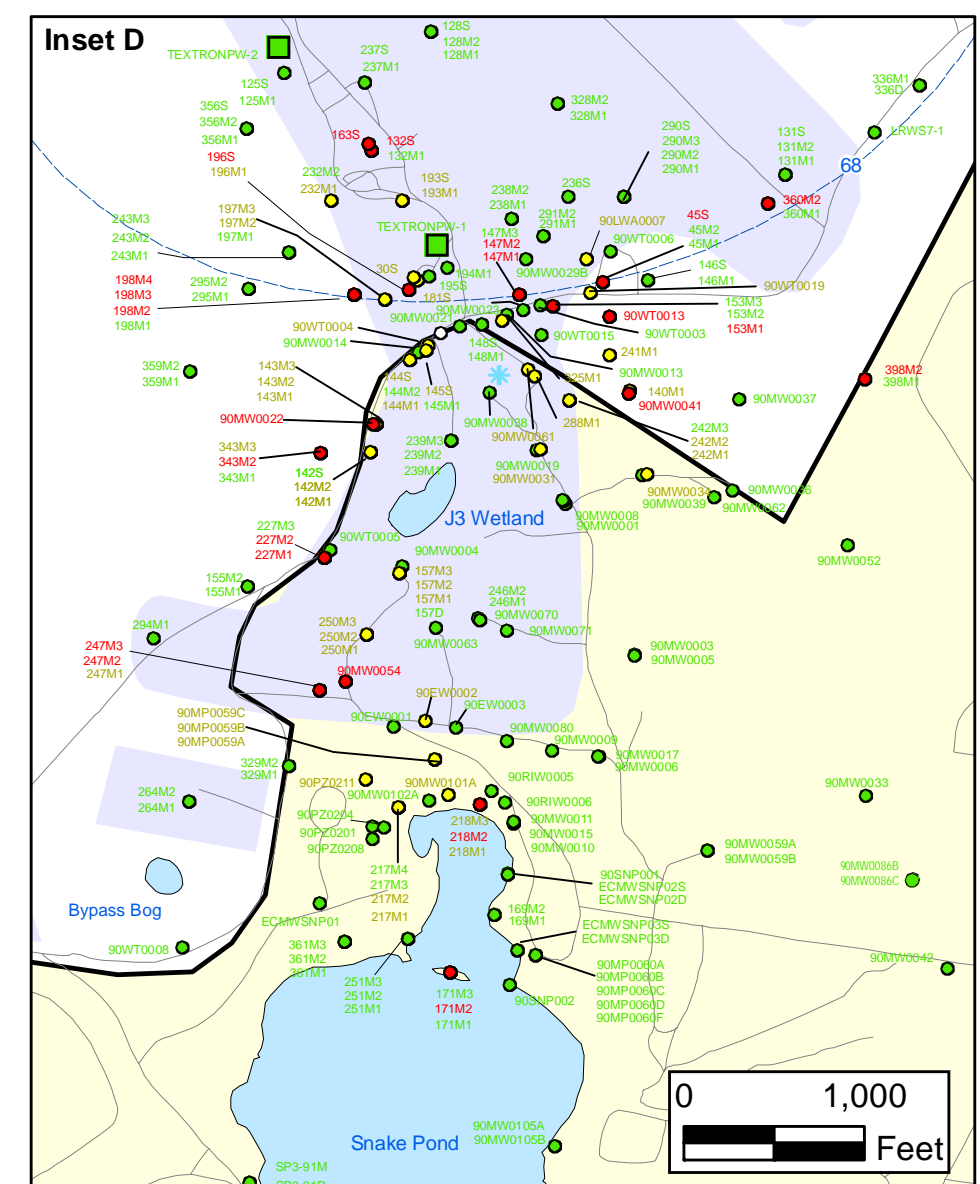
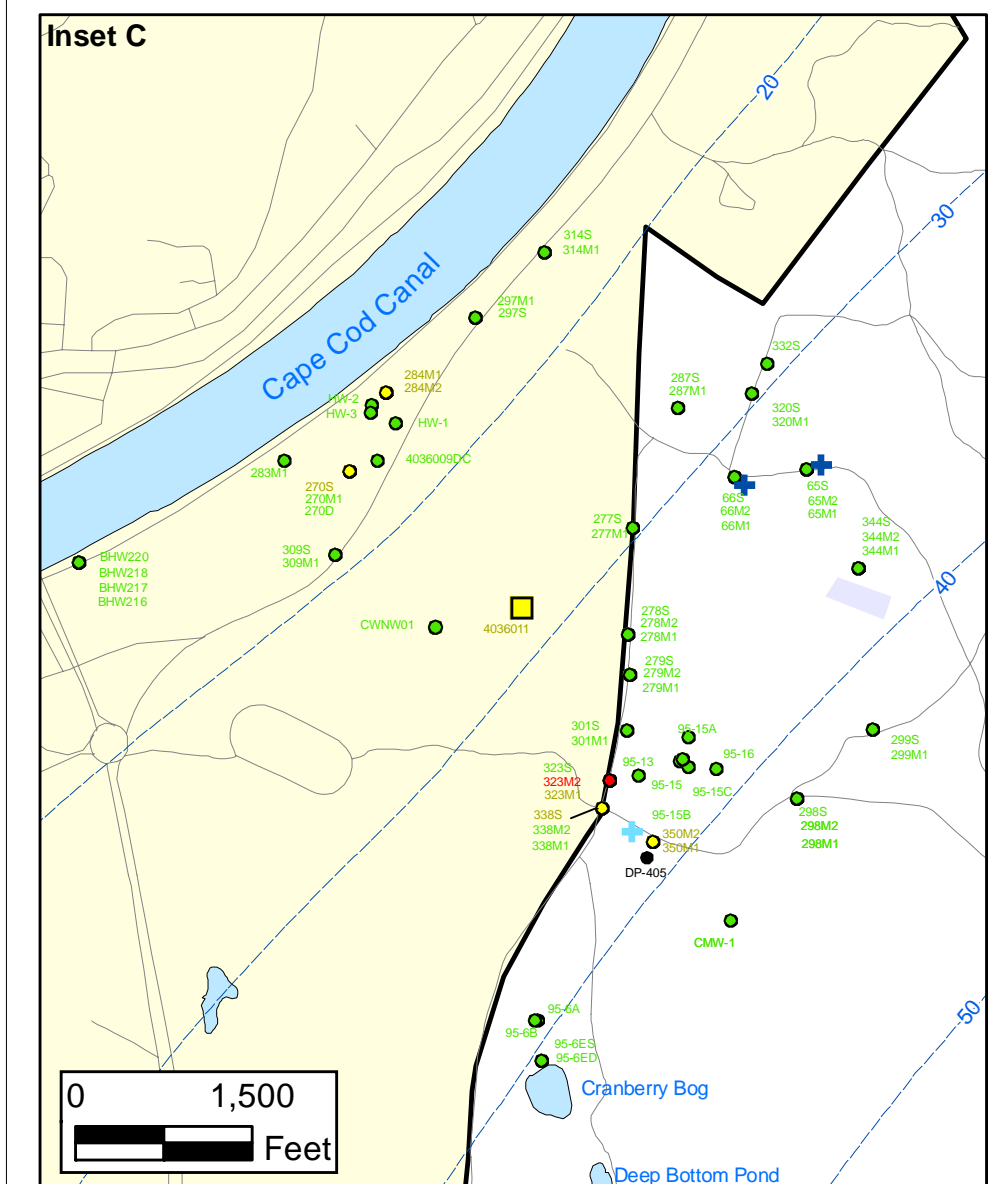
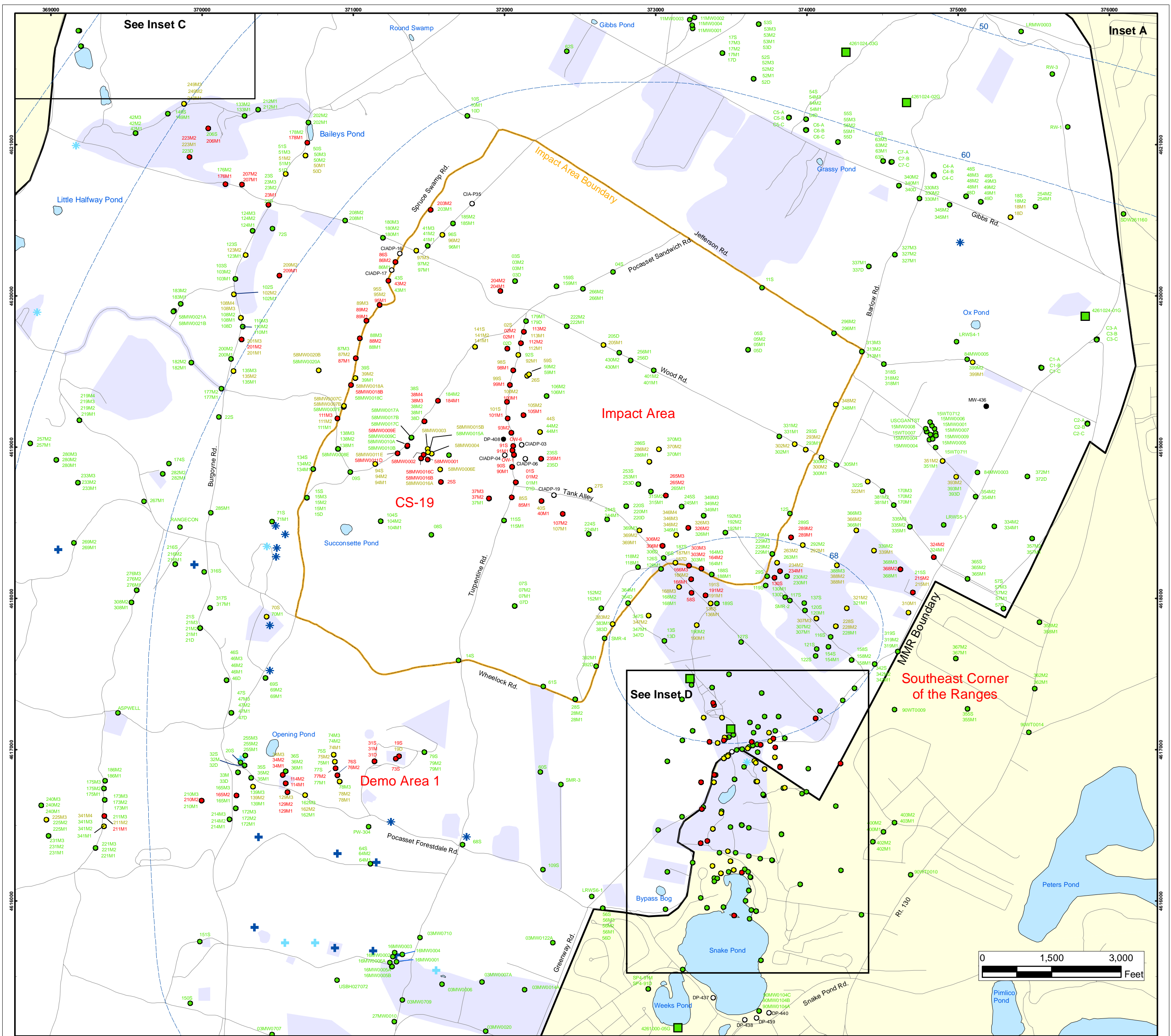


**Explosives in Groundwater Compared to Maximum Contaminant Level/Health Advisories**  
 Validated Data as of 04/21/06

**FIGURE 1**





### Explosives in Groundwater Compared to Maximum Contaminant Level/Health Advisories

Validated Data as of 04/21/06

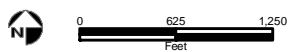
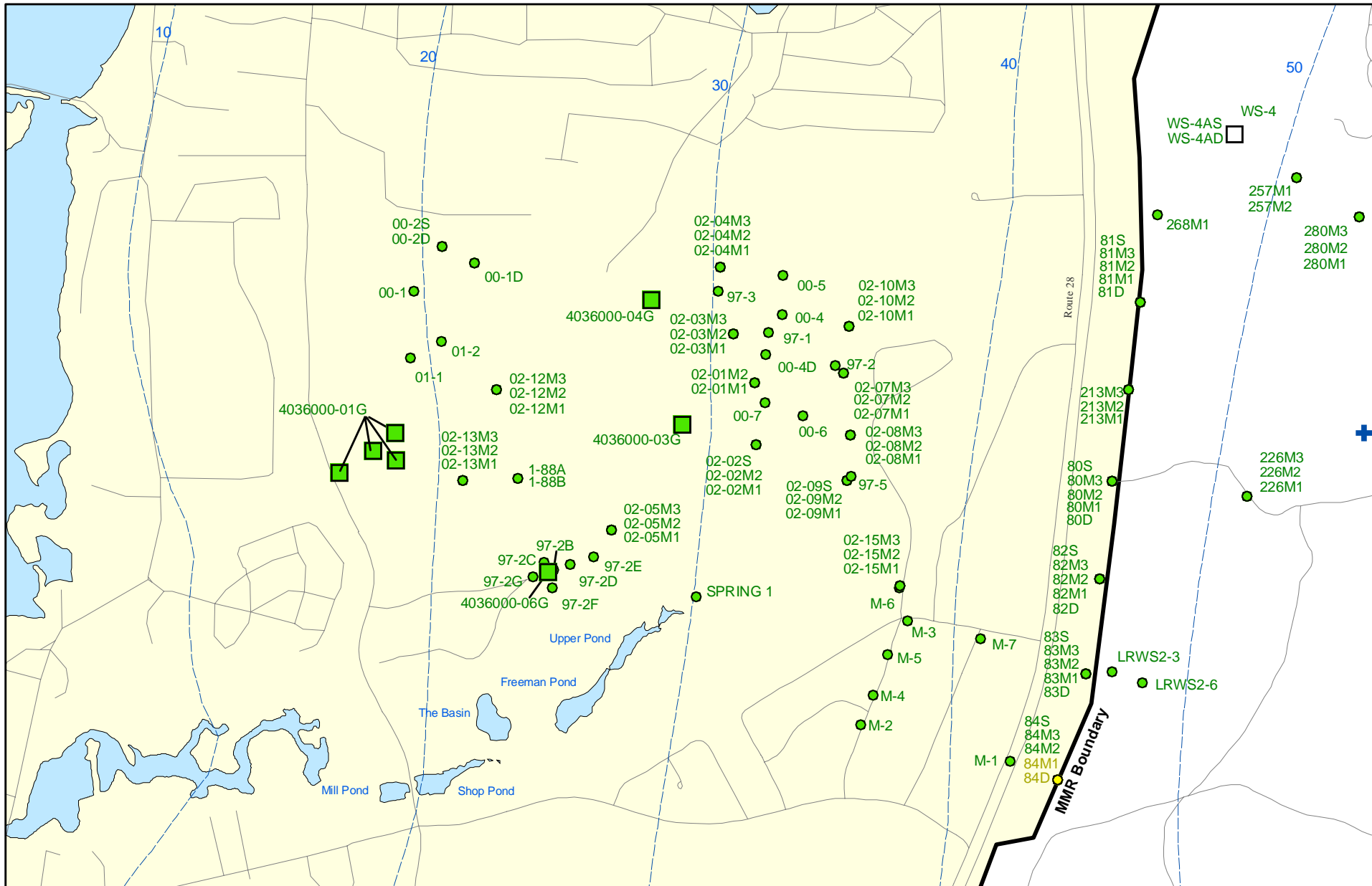
- Validated Detection Greater than or Equal to Maximum Contaminant Level/Health Advisories
- Validated Detection Less than Maximum Contaminant Level/Health Advisories
- Validated Non-Detect
- Data Pending
- Proposed Monitoring Well
- Military Range Areas
- + Current Gun Position
- \* Current Mortar Position
- + Old Gun Position
- \* Old Mortar Position
- Validated Non-Detect Water Supply Well
- Validated Detection Less than Maximum Contaminant Level/Health Advisories Water Supply Well
- Water Table Contour (Feet NGVD), AMEC, September 2003

AMEC Earth & Environmental, Inc.  
Westford, Massachusetts

Sources & Notes  
Base map data from US Geological Survey  
7 1/2 minute Topographic Maps  
Source: Office of Geographic and  
Environmental Information (MassGIS)  
Environmental Information  
Executive Office of Environmental Affairs

**FIGURE 1**

**Inset Map**



Sources & Notes:  
 Base map data from US Geological Survey  
 7 1/2 minute Topographic maps.  
 Source: Office of Geographic and  
 Environmental Information (MassGIS)  
 Commonwealth of Massachusetts  
 Executive Office of Environmental Affairs

- Validated Detection Less than Maximum Contaminant Level/Health Advisories
- Validated Non-Detect
- + Current Gun Position

- Validated Non-Detect Water Supply Well
- Proposed Water Supply Well
- Water Table Contour (Feet NGVD)  
AMEC, September 2003

**Explosives in Groundwater Compared to  
 Maximum Contaminant Level/Health Advisories  
 Validated Data as of 04/21/06**

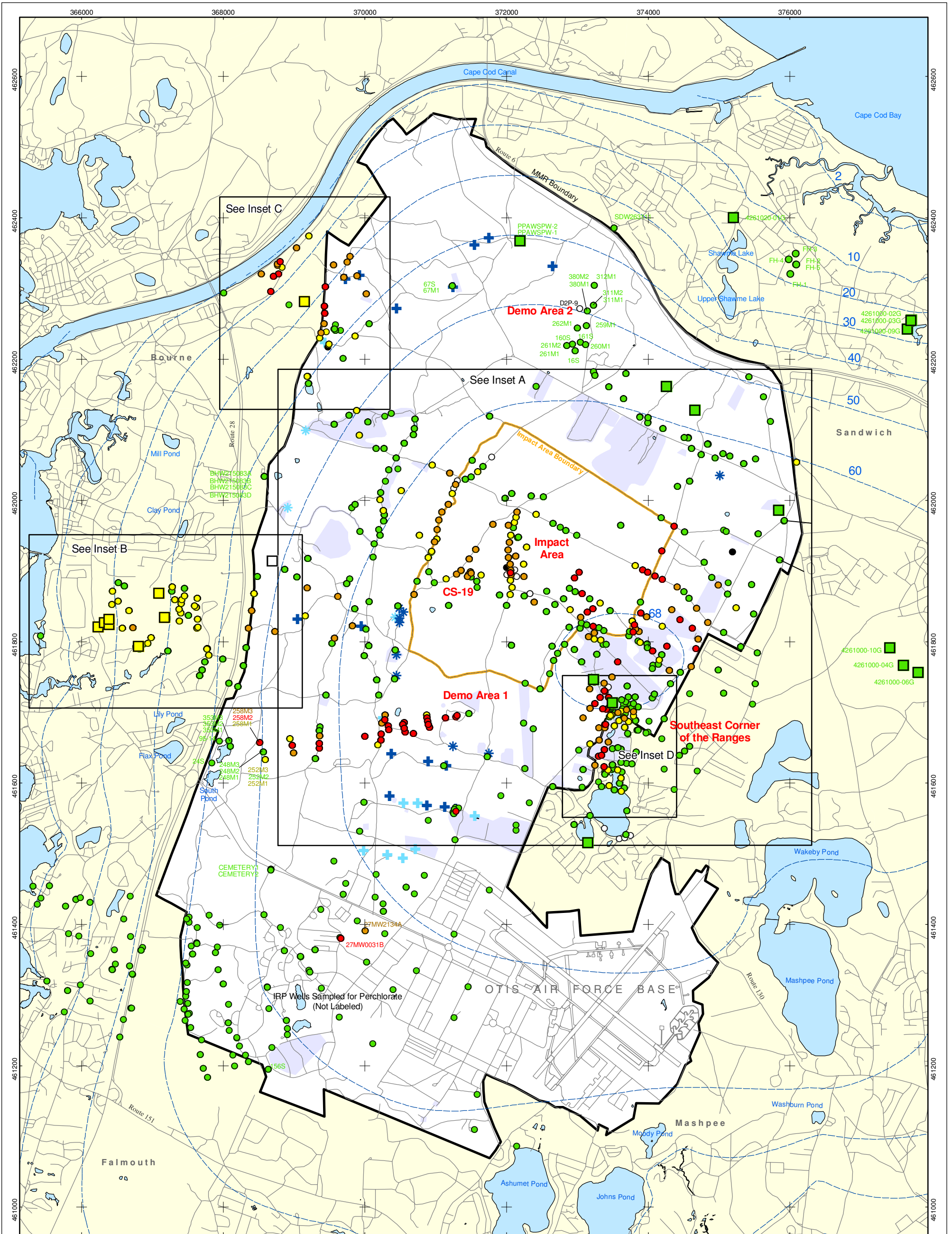


AMEC Earth & Environmental, Inc.  
 Westford, Massachusetts


Inset Map B

FIGURE  
**1**





● Validated Detection Greater than or Equal to 4 ppb	■ Validated Non-Detect Water Supply Well	⊕ Current Gun Position
● Validated Detection Greater than or Equal to 1 and Less than 4 ppb	■ Validated Detection Less than 1 ppb Water Supply Well	⊛ Current Mortar Position
● Validated Detection Greater than Non-Detect and Less than 1 ppb	□ Proposed Water Supply Well	⊕ Old Gun Position
● Validated Non-Detect		⊛ Old Mortar Position
● Data Pending		--- Water Table Contour (Feet NGVD) AMEC, September 2003
○ Proposed Monitoring Well		■ Military Range Areas

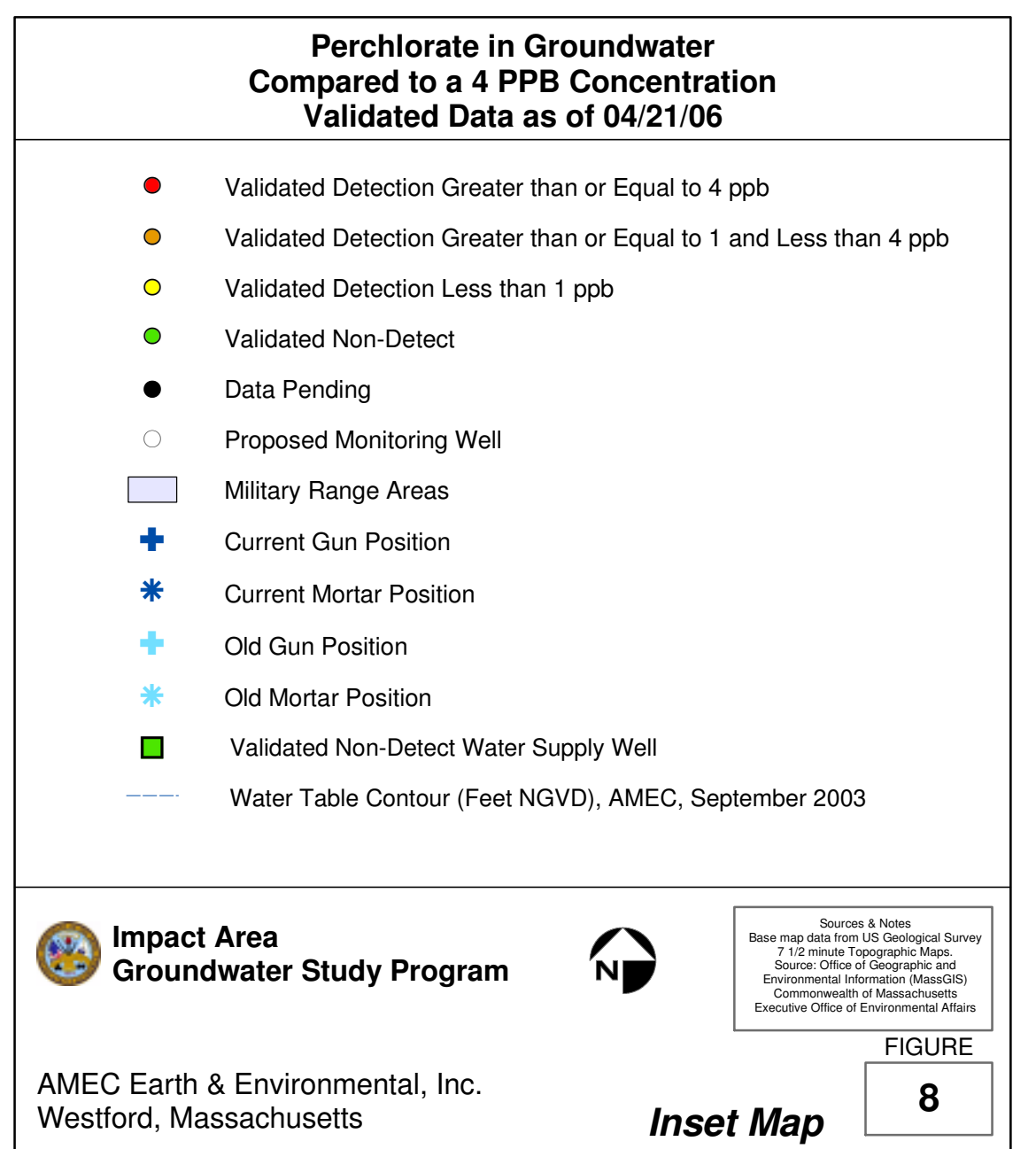
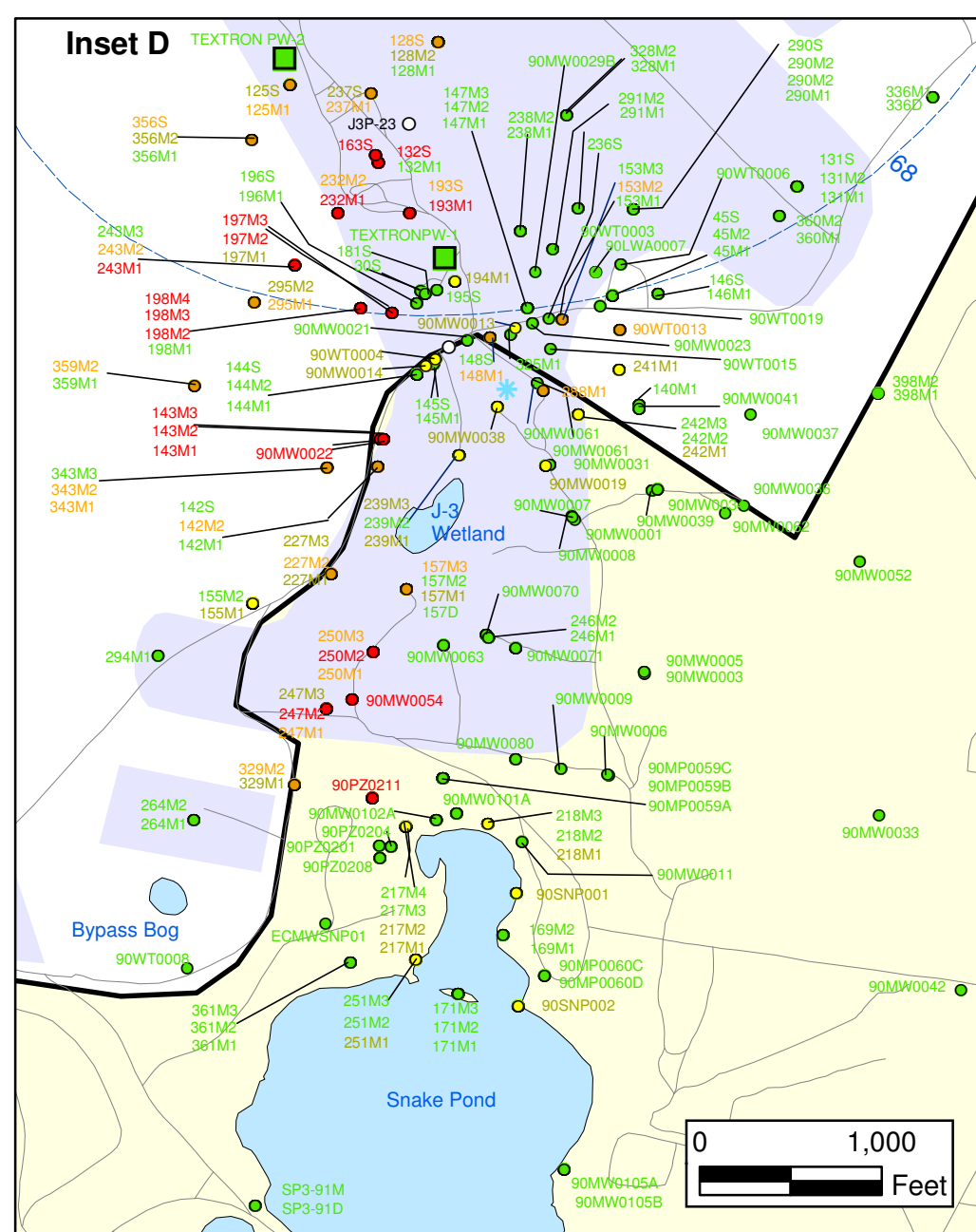
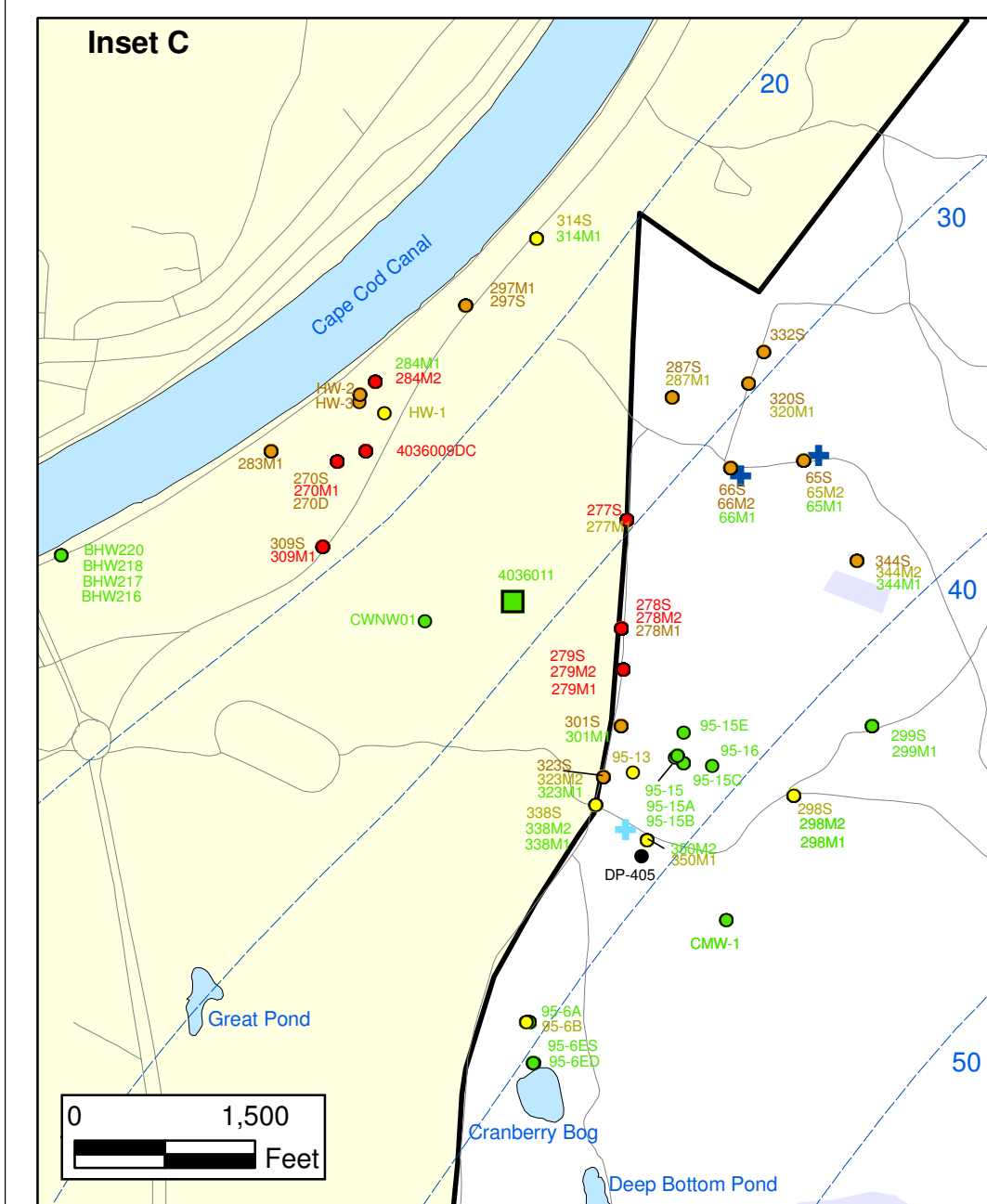
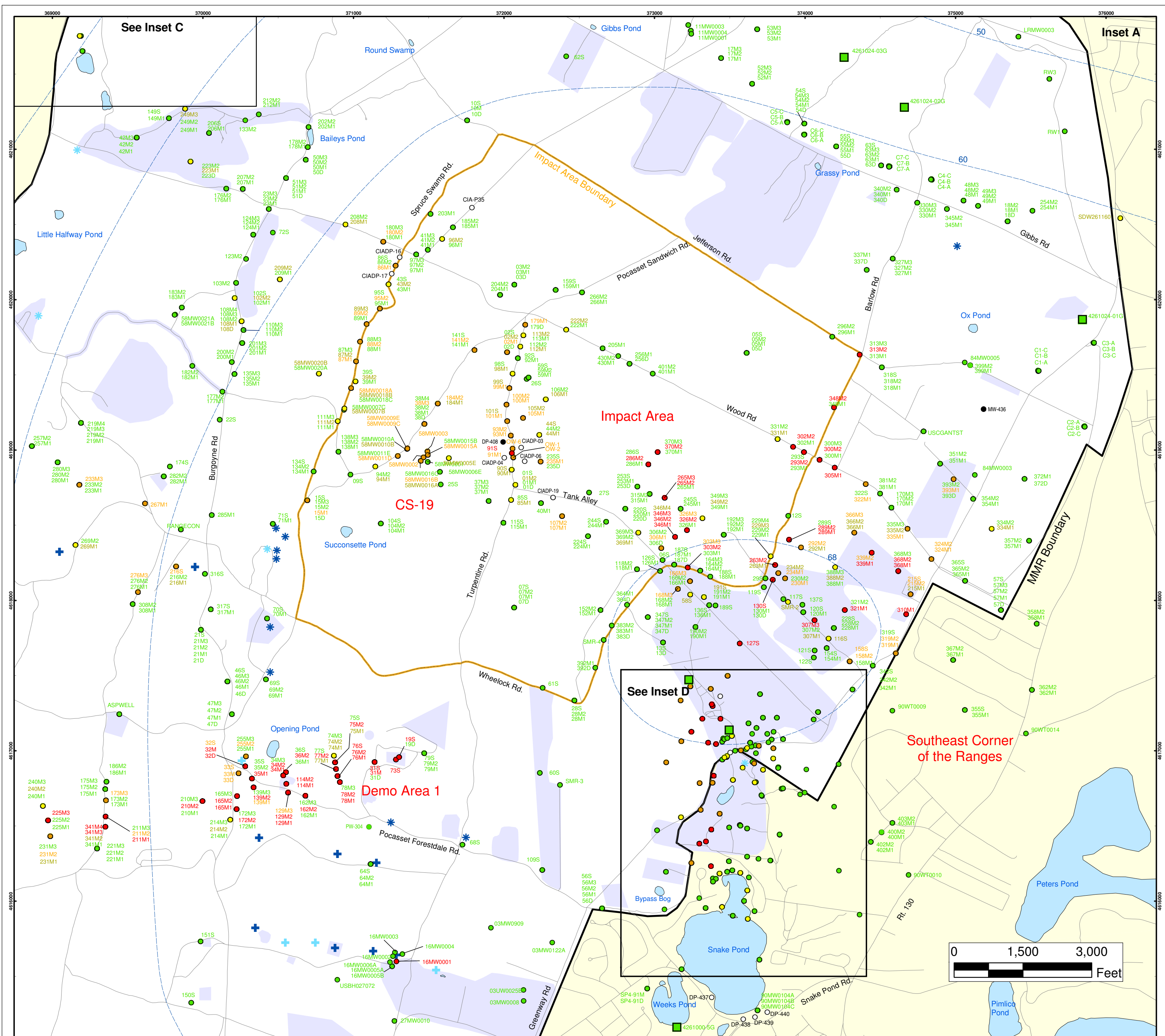
  
 0 2,000 4,000  
 Feet

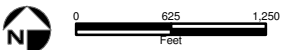
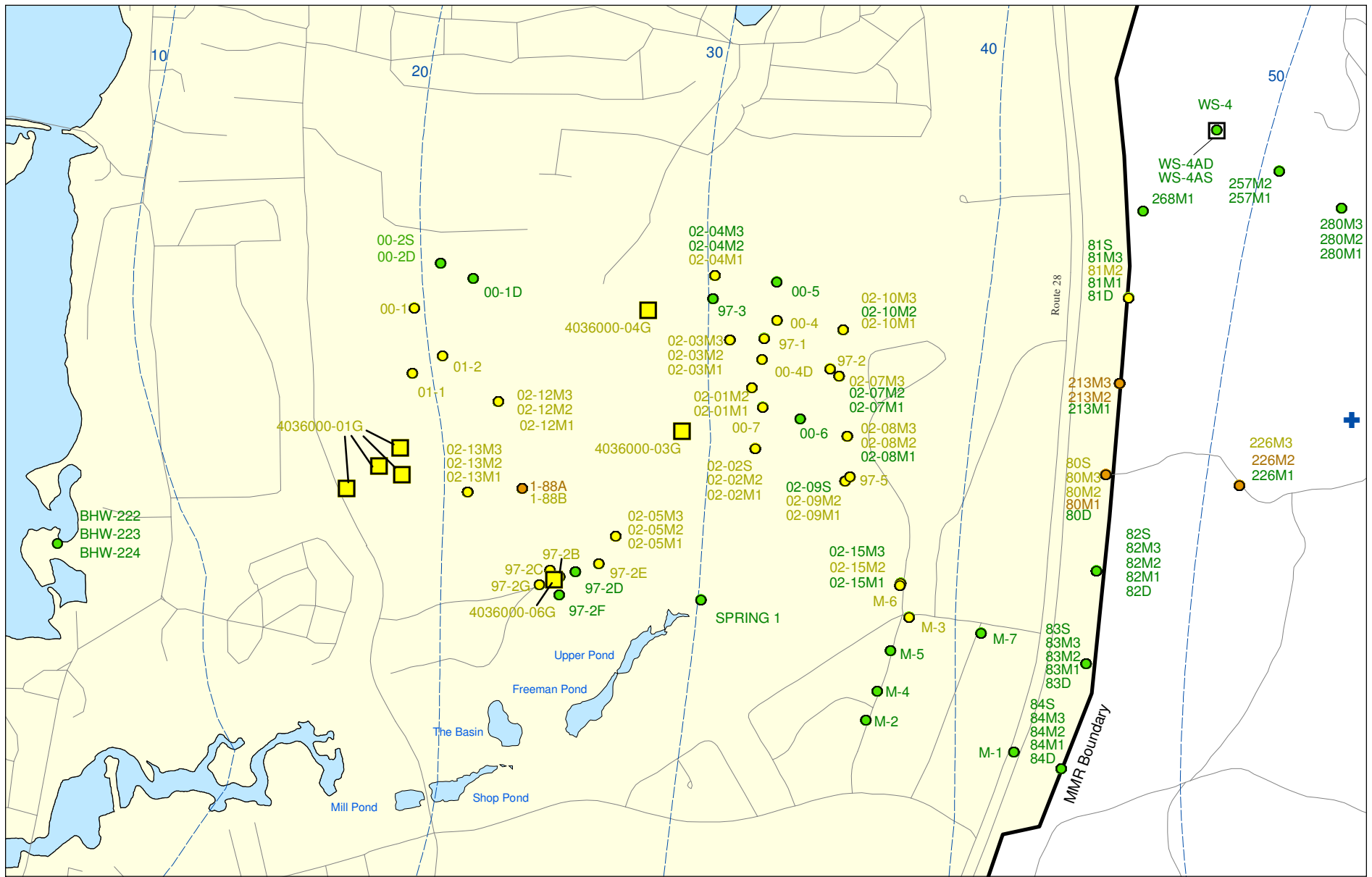
Sources & Notes  
 Base map data from US Geological Survey  
 7 1/2 minute Topographic Maps.  
 Sources: Office of Geographic and  
 Environmental Information (MassGIS)  
 Commonwealth of Massachusetts  
 Executive Office of Environmental Affairs

**Perchlorate in Groundwater Compared to a 4 ppb Concentration**  
**Validated Data as of 04/21/06**

FIGURE  
8







Sources & Notes:  
 Base map data from US Geological Survey  
 7 1/2 minute Topographic maps.  
 Source: Office of Geographic and  
 Environmental Information (MassGIS)  
 Commonwealth of Massachusetts  
 Executive Office of Environmental Affairs

- Validated Detection Greater than or Equal to 1 and Less than 4 ppb
- Validated Detection Greater than Non-Detect and Less than 1 ppb
- Validated Non-Detect
- +
- Current Gun Position
- Validated Detection Less than 1 ppb Water Supply Well
- Proposed Water Supply Well
- Water Table Contour (Feet NGVD)  
 AMEC, September 2003

**Perchlorate in Groundwater  
 Compared to a 4 ppb Concentration  
 Validated Data as of 04/21/06**



AMEC Earth & Environmental, Inc.  
 Westford, Massachusetts

**Inset Map B** **8**





Activity ID	Activity Description	Enforceable Milestone	Orig Dur	Rem Dur	Early Start	Early Finish	Anticipated Start	Anticipated Finish	Variance	2006												2007												2008											
										D J F M A M J J A S O N D												D J F M A M J J A S O N D												D J F M A M J J A S O N D											
										D	J	F	M	A	M	J	J	A	S	O	N	D	D	J	F	M	A	M	J	J	A	S	O	N	D	D	J	F	M	A	M	J	J	A	S
31572	Demo 1 GW Construct Wells and Pipes: RA(C)		317*	268*	03OCT05	29DEC06	22SEP05A	29DEC06	0	Demo 1 GW Construct Wells and Pipes: RA(C)																																			
31575	PLACEHOLDER: Demo 1 GW Construct Building: RA(C)			249*	249*		03JAN06*	29DEC06	0	PLACEHOLDER: Demo 1 GW Construct Building: RA(C)																																			
31574	Start-Up Demo 1 GW: RA(C)	29DEC06	0	0	29DEC06		29DEC06		0	* Start-Up Demo 1 GW: RA(C) Start Up subject to change pending finalization of contract and agreement with Textron.																																			

## J-1 Range

### J-1 Range Soil

#### J-1 Range Soil: Remedial Investigation

02120	J-1 Geophysical Soil Response			260*	162*	29JUN05A	05JUN06	29JUN05A	08AUG06	-45	J-1 Geophysical Soil Response 45 day delay due to extended field program	
02118	Prepare Draft J-1 Soil RI Report			135*	135*	12MAY06	24NOV06	18JUL06	31JAN07	-46	Prepare Draft J-1 Soil RI Report	
02119	Submit Draft J-1 Soil RI Report	24NOV06		0	0		24NOV06		31JAN07	-46	* Submit Draft J-1 Soil RI Report J-2 priority 2/3 grids. Increased field duration	
02121	Prepare Final J-1 Soil RI Report			75*	75*	27NOV06	13MAR07	01FEB07	16MAY07	-46	Prepare Final J-1 Soil RI Report	
02123	Submit Final J-1 Soil RI Report			0	0		13MAR07		16MAY07	-46	* Submit Final J-1 Soil RI Report Submittal is 20 Days from MOR Approval	

#### J-1 Range Soil: Feasibility Study

02128	Scoping Meeting for J-1 Soil FSSR			1	1	27NOV06	27NOV06	01FEB07	01FEB07	-46	Scoping Meeting for J-1 Soil FSSR	
02129	J-1 Soil FS Screening Report Preparation			60	60	28NOV06	21FEB07	02FEB07	26APR07	-46	J-1 Soil FS Screening Report Preparation	
02131	Submit Draft J-1 Soil FS Screening Report	21FEB07		0	0		21FEB07		26APR07	-46	* Submit Draft J-1 Soil FS Screening Report	
02134	Revise J-1 Soil Draft FS Screening Report			75	75	22FEB07	06JUN07	27APR07	10AUG07	-46	Revise J-1 Soil Draft FS Screening Report	
02136	Submit Final J-1 Soil FS Screening Report			0	0		06JUN07		10AUG07	-46	* Submit Final J-1 Soil FS Screening Report Submittal is 20 Days from MOR Approval	
02137	Prepare Draft J-1 Soil FS			90	90	10MAY07	13SEP07	16JUL07	19NOV07	-46	Prepare Draft J-1 Soil FS	
02139	Submit Draft J-1 Soil FS	13SEP07		0	0		13SEP07		19NOV07	-46	* Submit Draft J-1 Soil FS	
02141	Prepare Final J-1 Soil FS			75*	75*	14SEP07	31DEC07	20NOV07	05MAR08	-46	Prepare Final J-1 Soil FS	
02143	Submit Final J-1 Soil FS			0	0		31DEC07		05MAR08	-46	* Submit Final J-1 Soil FS Submittal is 20 Days from MOR Approval	
02166	PLACEHOLDER: J-1 Range Soil: RSDD			132	132	03DEC07	05JUN08	07FEB08	11AUG08	-46	PLACEHOLDER: J-1 Range Soil: RSDD	

### J-1 Range Groundwater

#### J-1 Range Groundwater: Remedial Investigation

02133	Implement J-1 GW Field Program			478*	79*	30APR04A	29MAR06	30APR04A	29MAR06	0	Implement J-1 GW Field Program Assumes: (5) wells remaining P-30, P-31, P-32, P-37, P-38 and real estate access will take (2) months.	
02135	Validate J-1 GW Data			500*	101*	30APR04A	28APR06	30APR04A	28APR06	0	Validate J-1 GW Data	
02138	Prepare Draft J-1 GW RI Report			135	135	13MAR06	20SEP06	13MAR06	20SEP06	0	Prepare Draft J-1 GW RI Report	
02140	Submit Draft J-1 GW RI Report	20SEP06		0	0		20SEP06		20SEP06	0	* Submit Draft J-1 GW RI Report	

**milestone colors**

Milestone > 90 days Out

Milestone < 90 days Out





Activity ID	Activity Description	Enforceable Milestone	Orig Dur	Rem Dur	Early Start RCS 82105	Early Finish RCS 82105	Anticipated Start	Anticipated Finish	Variance	2006												2007												2008											
										D	J	F	M	A	M	J	J	A	S	O	N	D	J	F	M	A	M	J	J	A	S	O	N	D	J	F	M	A	M	J	J	A	S	O	N
<b>J-2 Range</b>																																													
<b>J-2 Range Soil</b>																																													
<b>J-2 Range Soil: Remedial Investigation</b>																																													
00314	Implement J-2 Geophysical Investig Field Program		361*	146*	12JAN05A	18JUL06	12JAN05A	17JUL06	10		Implement J-2 Geophysical Investig Field Program																																		
00325	Prepare Draft J-2 Soil RI Report		135*	135*	29JUN06	12JAN07	28JUN06	12JAN07	0		Prepare Draft J-2 Soil RI Report																																		
00327	Submit Draft J-2 Soil RI Report	12JAN07	0	0		12JAN07		12JAN07	0		Submit Draft J-2 Soil RI Report																																		
00329	Prepare Final J-2 Soil RI Report		75*	75*	15JAN07	27APR07	15JAN07	27APR07	0		Prepare Final J-2 Soil RI Report																																		
00331	Submit Final J-2 Soil RI Report		0	0		27APR07		27APR07	0		Submit Final J-2 Soil RI Report Submittal is 20 Days from MOR Approval																																		
<b>J-2 Range Soil: RRA</b>																																													
03210	Implement J2 Soil RRA Field Program		445*	0*	14JAN04A	28SEP05	14JAN04A	20OCT05A	-15		Implement J2 Soil RRA Field Program																																		
03211	Prepare Draft J-2 Soil RRA Completion of Work Rt		51*	0*	16SEP05	21NOV05	08SEP05A	21NOV05A	0		Prepare Draft J-2 Soil RRA Completion of Work Rt																																		
03212	Submit Draft J-2 Soils RRA Completion of Work Rt	21NOV05	Y	0	0	21NOV05		21NOV05A	0		Submit Draft J-2 Soils RRA Completion of Work Rt																																		
03213	Prepare Final J-2 Soil RRA Completion of Work Rt		74*	67*	22NOV05	13MAR06	22NOV05A	13MAR06	0		Prepare Final J-2 Soil RRA Completion of Work Rt																																		
03214	Submit Final J-2 Soils RRA Completion of Work Rt		0	0		13MAR06		13MAR06	0		Submit Final J-2 Soils RRA Completion of Work Rt Submittal is 20 Days from MOR Approval																																		
<b>J-2 Range Soil: Feasibility Study</b>																																													
00332	Scoping Meeting for J-2 Soil FSSR		1	1	15JAN07	15JAN07	15JAN07	15JAN07	0		Scoping Meeting for J-2 Soil FSSR																																		
00334	J-2 Soil FS Screening Report Preparation		60	60	16JAN07	09APR07	16JAN07	09APR07	0		J-2 Soil FS Screening Report Preparation																																		
00336	Submit Draft J-2 Soil FS Screening Report	09APR07	0	0		09APR07		09APR07	0		Submit Draft J-2 Soil FS Screening Report																																		
00338	Revise J-2 Soil Draft FS Screening Report		75	75	10APR07	24JUL07	10APR07	24JUL07	0		Revise J-2 Soil Draft FS Screening Report																																		
00340	Submit Final J-2 Soil FS Screening Report		0	0		24JUL07		24JUL07	0		Submit Final J-2 Soil FS Screening Report Submittal is 20 Days from MOR Approval																																		
00342	Prepare Draft J-2 Soil FS		90	90	26JUN07	30OCT07	26JUN07	30OCT07	0		Prepare Draft J-2 Soil FS																																		
00344	Submit Draft J-2 Soil FS	30OCT07	0	0		30OCT07		30OCT07	0		Submit Draft J-2 Soil FS																																		
00346	Prepare Final J-2 Soil FS		75*	75*	31OCT07	15FEB08	31OCT07	15FEB08	0		Prepare Final J-2 Soil FS																																		
00348	Submit Final J-2 Soil FS		0	0		15FEB08		15FEB08	0		Submit Final J-2 Soil FS Submittal is 20 Days from MOR Approval																																		
00390	PLACEHOLDER: J-2 Range Soil: RS/DD		132	132	21JAN08	23JUL08	21JAN08	23JUL08	0		PLACEHOLDER: J-2 Range Soil: RS/DD																																		
<b>J-2 Range Groundwater</b>																																													
<b>J-2 Range Groundwater: Remedial Investigation</b>																																													
00347	Implement J-2 GW Field Program		598*	0*	23JUN03A	17NOV05	23JUN03A	02NOV05A	10		Implement J-2 GW Field Program																																		
00349	Validate J-2 GW Data		542*	2*	09OCT03A	20DEC05	09OCT03A	06DEC05	10		Validate J-2 GW Data																																		
00351	Prepare Draft J-2 GW RI Report		135	135	15NOV05	30MAY06	05DEC05	16JUN06	-13		Prepare Draft J-2 GW RI Report																																		

**milestone colors**

- Milestone > 90 days Out
- Milestone < 90 days Out



Activity ID	Activity Description	Enforceable Milestone	Orig Dur	Rem Dur	Early Start RCS 8/21/05	Early Finish RCS 8/21/05	Anticipated Start	Anticipated Finish	Variance	2006												2007												2008																							
										D J F M A M J J A S O N D												D J F M A M J J A S O N D												D J F M A M J J A S O N D																							
										D	J	F	M	A	M	J	J	A	S	O	N	D	J	F	M	A	M	J	J	A	S	O	N	D	J	F	M	A	M	J	J	A	S	O	N	D	J										
00352	Submit Draft J-2 GW RI Report	3MAY06		0	0		30MAY06		16JUN06	-13													*																																		
00353	Prepare Final J-2 GW RI Report			75*	75*	31MAY06	14SEP06	19JUN06	03OCT06	-13																																															
00355	Submit Final J-2 GW RI Report			0	0		14SEP06		03OCT06	-13																																															
00300	Prepare Draft J-2E Interim GW Monitoring Plan			37*	10*			24OCT05A	16DEC05	0																																															
00302	Submit Draft J-2E Interim GW Monitoring Plan			0	0				16DEC05	0													*																																		
00320	Prepare Final J-2E Interim GW Monitoring Plan			75*	75*			19DEC05	06APR06	0																																															
00322	Submit Final J-2E Interim GW Monitoring Plan			0	0				06APR06	0													*																																		

**J-2 Range Groundwater: RRA**

00391	Prepare Final J-2 GW RRA Plan			164*	12*	27APR05A	14NOV05	27APR05A	20DEC05	-24																																												
00401	Submit Final J-2 GW RRA Plan	20DEC05		0	0		14NOV05		20DEC05	-24													*																															
00403	Construction J-2 GW RRA Sys (N.Plume only)			317*	268*	03OCT05	29DEC06	22SEP05A	29DEC06	0																																												
00404	System Start Up: J-2 GW RRA Sys (N.Plume only)	29DEC06		0	0		29DEC06		29DEC06	0													*																															

**J-2 Range Groundwater: Feasibility Study**

00356	Scoping Meeting for J-2 GW FSSR			1	1	31MAY06	31MAY06	19JUN06	19JUN06	-13																																												
00357	J-2 GW FS Screening Report Preparation			30	30	01JUN06	13JUL06	20JUN06	01AUG06	-13																																												
00358	Submit Draft J-2 GW FS Screening Report	13JUL06		0	0		13JUL06		01AUG06	-13													*																															
00359	Prepare Final J-2 GW Draft FS Screening Report			35	35	14JUL06	31AUG06	02AUG06	20SEP06	-13																																												
00360	Submit Final J-2 GW FS Screening Report			0	0		31AUG06		20SEP06	-13													*																															
00364	Prepare Draft J-2 GW FS			90	90	07AUG06	14DEC06	24AUG06	05JAN07	-14																																												
00363	Submit Draft J-2 GW FS	14DEC06		0	0		14DEC06		05JAN07	-14													*																															
00365	Prepare Final J-2 GW FS			75*	75*	15DEC06	02APR07	08JAN07	20APR07	-14																																												
00366	Submit Final J-2 GW FS			0	0		02APR07		20APR07	-14													*																															
00368	PLACEHOLDER: J-2 Range GW: RD			169	169	08DEC06	14SEP07	29DEC06	24AUG07	15																																												
00367	PLACEHOLDER: J-2 Range GW: RS/DD			132	132	06MAR07	06SEP07	26MAR07	26SEP07	-14																																												
00369	PLACEHOLDER: J-2 Range GW: RA(C)			306	306	17SEP07	24NOV08	27AUG07	31OCT08	15																																												

Start Date 01FEB03  
 Finish Date 20DEC69  
 Data Date 04DEC05  
 Run Date 08DEC05 16:45

U113  
 Sheet 5 of 16  
 RCS - by Area w/TARGET bars  
 as of 04DEC05

milestone colors  
 Milestone > 90 days Out  
 Milestone < 90 days Out

Activity ID	Activity Description	Enforceable Milestone	Orig Dur	Rem Dur	Early Start RCS 8/21/05	Early Finish RCS 8/21/05	Anticipated Start	Anticipated Finish	Variance	2006												2007												2008												
										D	J	F	M	A	M	J	J	A	S	O	N	D	D	J	F	M	A	M	J	J	A	S	O	N	D	D	J	F	M	A	M	J	J	A	S	O
<b>J-3 Range</b>																																														
<b>J-3 Range Soils - Closure FY '07</b>																																														
<b>J-3 Range Soil: Remedial Investigation</b>																																														
02217	Prepare Draft J-3 Soil RI Report			137*	49*	28JUL05A	14FEB06	28JUL05A	14FEB06	0	[Green Bar]	Prepare Draft J-3 Soil RI Report																																		
02219	Submit Draft J-3 Soil RI Report	14FEB06		0	0		14FEB06		14FEB06	0	[Green Bar]	Submit Draft J-3 Soil RI Report																																		
02221	Prepare Final J-3 Soil RI Report			75*	75*	15FEB06	01JUN06	15FEB06	01JUN06	0	[Green Bar]	Prepare Final J-3 Soil RI Report																																		
02223	Submit Final J-3 Soil RI Report			0	0		01JUN06		01JUN06	0	[Green Bar]	Submit Final J-3 Soil RI Report Submittal is 20 Days from MOR Approval																																		
02300	PLACEHOLDER: J-3 Range Soil: FS			281*	281*	15FEB06	04APR07	15FEB06	28MAR07	5	[Green Bar]	PLACEHOLDER: J-3 Range Soil: FS																																		
02302	PLACEHOLDER: J-3 Range Soil: RD			95	95	12MAR07	23JUL07	04JAN07	16MAY07	47	[Green Bar]	PLACEHOLDER: J-3 Range Soil: RD																																		
02301	PLACEHOLDER: J-3 Range Soil: RS/DD			132	132	14DEC06	19JUN07	01MAR07	03SEP07	-53	[Green Bar]	PLACEHOLDER: J-3 Range Soil: RS/DD																																		
02304	PLACEHOLDER: J-3 Range Soil: RA(C)			155	155	24JUL07	28FEB08	17MAY07	21DEC07	47	[Green Bar]	PLACEHOLDER: J-3 Range Soil: RA(C)																																		
<b>J-3 Range Soil: RRA</b>																																														
03309	Prepare Final J-3 Soils RRA Completion of Wk Rt			126*	0*	26MAY05A	21OCT05	26MAY05A	23NOV05A	-22	[Green Bar]	Prepare Final J-3 Soils RRA Completion of Wk Rt																																		
03310	Submit Final J-3 Soils RRA Completion of Work Rt	28NOV05	Y	0	0		21OCT05		23NOV05A	-22	[Green Bar]	Submit Final J-3 Soils RRA Completion of Work Rt Submittal is 20 Days from MOR Approval 10/26/05																																		
<b>J-3 Range Groundwater</b>																																														
<b>J-3 Range Groundwater: Remedial Investigation</b>																																														
02234	Implement J-3 GW Field Program			460*	52*	03APR04A	13OCT05	03APR04A	03MAR06	-76	[Green Bar]	Implement J-3 GW Field Program Assumes: (5) Snake Pond drive points -76 day delay - awaiting real estate access.																																		
02236	Validate J-3 GW Data			431*	96*	01AUG04A	05DEC05	01AUG04A	21APR06	-95	[Green Bar]	Validate J-3 GW Data																																		
02238	Prepare Draft J-3 GW RI Report			135	135	27OCT05	11MAY06	17MAR06	26SEP06	-95	[Green Bar]	Prepare Draft J-3 GW RI Report																																		
02240	Submit Draft J-3 GW RI Report	11MAY06		0	0		11MAY06		26SEP06	-95	[Green Bar]	Submit Draft J-3 GW RI Report																																		
02242	Prepare Final J-3 GW RI Report			75	75	12MAY06	28AUG06	27SEP06	17JAN07	-95	[Green Bar]	Prepare Final J-3 GW RI Report																																		
02244	Submit Final J-3 GW RI Report			0	0		28AUG06		17JAN07	-95	[Green Bar]	Submit Final J-3 GW RI Report Submittal is 20 Days from MOR Approval																																		
<b>J-3 Range Groundwater: RRA</b>																																														
03355	Design J-3 GW RRA Treatment System			320*	0*	22JUL04A	03OCT05	22JUL04A	11AUG05A	36	[Green Bar]	Design J-3 GW RRA Treatment System																																		
03365	Construct J-3 GW RRA Treatment System			317*	268*	03OCT05	29DEC06	22SEP05A	29DEC06	0	[Green Bar]	Construct J-3 GW RRA Treatment System																																		
03366	Start Up J-3 GW RRA Treatment System	29DEC06		0	0	29DEC06		29DEC06		0	[Green Bar]	Start Up J-3 GW RRA Treatment System																																		
<b>J-3/L Range: Groundwater: Feasibility Study</b>																																														
02251	J-3/L GW FS Scoping Meeting/Screening Discussion			1	1	01AUG06	01AUG06	19DEC06	19DEC06	-95	[Green Bar]	J-3/L GW FS Scoping Meeting/Screening Discussion																																		
02252	Prepare Draft J-3/L GW FS			90	90	02AUG06	11DEC06	20DEC06	26APR07	-96	[Green Bar]	Prepare Draft J-3/L GW FS																																		

Start Date  
Finish Date  
Data Date  
Run Date

01FEB03  
20DEC69  
04DEC05  
08DEC05 16:45

U113

Sheet 6 of 16

RCS - by Area w/TARGET bars  
as of 04DEC05

milestone colors  
[Green Bar] Milestone > 90 days Out  
[Yellow Bar] Milestone < 90 days Out





Activity ID	Activity Description	Enforceable Milestone	Orig Dur	Rem Dur	Early Start RCS 8/21/05	Early Finish RCS 8/21/05	Anticipated Start	Anticipated Finish	Variance	2006												2007												2008											
										D	J	F	M	A	M	J	J	A	S	O	N	D	D	J	F	M	A	M	J	J	A	S	O	N	D	D	J	F	M	A	M	J	J	A	S
<b>Central Impact Area</b>																																													
<b>CIA Soil</b>																																													
<b>CIA Soil: Remedial Investigation</b>																																													
00261	Prepare Draft CIA Soil RI Report			442*	24*	04APR04A	23NOV05	04APR04A	09JAN06	-29	<p>Prepare Draft CIA Soil RI Report Milestone may change based on EPA's request to include the PSI data in the RI report.</p>																																		
00262	Submit Draft Final CIA Soil RI Report	09JAN06		0	0		23NOV05		09JAN06	-29	<p>Submit Draft Final CIA Soil RI Report</p>																																		
00263	Prepare Final CIA Soil RI Report			75	75	25NOV05	15MAR06	10JAN06	26APR06	-30	<p>Prepare Final CIA Soil RI Report</p>																																		
00292	Submit Final CIA Soil RI Report			0	0		15MAR06		26APR06	-30	<p>Submit Final CIA Soil RI Report Submittal is 20 Days from MOR Approval</p>																																		
<b>CIA Soil: Focused Investigation</b>																																													
03011	Field Investigations Soil FI			97	50	19NOV03A	15MAY06	19NOV03A	15MAY06	0	<p>Field Investigations Soil FI</p>																																		
03014	Lab Analysis/Data Validation Soil FI			144	80	26DEC03A	12JUL06	26DEC03A	12JUL06	0	<p>Lab Analysis/Data Validation Soil FI</p>																																		
03021	Revise Draft Report Soil FI			65	60	17NOV04A	05OCT06	17NOV04A	05OCT06	0	<p>Revise Draft Report Soil FI Awaiting Agency Comments</p>																																		
03023	Submit Revised Draft Report Soil FI	05OCT06		0	0		05OCT06		05OCT06	0	<p>Submit Revised Draft Report Soil FI</p>																																		
03024	Prepare Final Report Soil FI			75	75	06OCT06	25JAN07	05OCT06	25JAN07	0	<p>Prepare Final Report Soil FI</p>																																		
03025	Submit Final Report Soil FI			0	0		25JAN07		25JAN07	0	<p>Submit Final Report Soil FI Submittal is 20 Days from MOR Approval</p>																																		
<b>CIA Soil: RRA Targets 23/42</b>																																													
03120	Prepare Draft CIA Completion of Work Targ 23/42			46*	0*	15JUN05A	18AUG05A	15JUN05A	18AUG05A	0	<p>Prepare Draft CIA Completion of Work Targ 23/42</p>																																		
03121	Submit Draft CIA Completion of Work Rpt 42 & 23	18AUG05	Y	0	0		18AUG05A		18AUG05A	0	<p>Submit Draft CIA Completion of Work Rpt 42 &amp; 23</p>																																		
03122	Prepare Final Draft CIA Compl of Wk Target 23/42			134*	62*	19AUG05A	07DEC05	19AUG05A	06MAR06	-59	<p>Prepare Final Draft CIA Compl of Wk Target 23/42 59 day delay - extended EPA comment duration</p>																																		
03123	Submit Final CIA Completion of WkRt Target 23/42			0	0		07DEC05		06MAR06	-59	<p>Submit Final CIA Completion of WkRt Target 23/42 Submittal is 20 Days from MOR Approval</p>																																		
<b>Treatability Study</b>																																													
03083	Treatability Study			72*	470*	06DEC04A	29JUN07	06DEC04A	11OCT07	-73	<p>Treatability Study (Includes Technologies for CIA and Gun &amp; Mortar Positions) Schedule subject to change pending approval of work plan.</p>																																		
<b>CIA Soil &amp; GW: Feasibility Study</b>																																													
22110	CIA Soil & GW FS Screening Report Preparation			306*	145*	14APR05A	07OCT05	14APR05A	30JUN06	-182	<p>CIA Soil &amp; GW FS Screening Report Preparation</p>																																		
22120	Submit Draft CIA Soil & GW FS Screening Report	07OCT05		0	0		07OCT05		30JUN06	-182	<p>Submit Draft CIA Soil &amp; GW FS Screening Report Schedule to be revised after scoping mt w/Agency A TBD date was requested on 9/19/05.</p>																																		
22398	Model FS Screening Report Scenarios			124	153	16JUN03A	05OCT05	16JUN03A	13JUL06	-192	<p>Model FS Screening Report Scenarios Schedule to be revised after scoping meeting with Agencies.</p>																																		
22130	Prepare Final CIA Draft Soil & GW FS Screen Rpt			75	75	11OCT05	30JAN06	03JUL06	18OCT06	-182	<p>Prepare Final CIA Draft Soil &amp; GW FS Screen Rpt</p>																																		
22140	Submit Final CIA Soil & GW FS Screening Report			0	0		30JAN06		18OCT06	-182	<p>Submit Final CIA Soil &amp; GW FS Screening Report Submittal is 20 days from MOR Approval</p>																																		
22143	Prepare Draft Post Screen Invst CIA Source Area WP			124*	0*	14JUN05A	15AUG05A	14JUN05A	15AUG05A	0	<p>Prepare Draft Post Screen Invst CIA Source Area WP</p>																																		

Start Date 01FEB03  
 Finish Date 20DEC69  
 Data Date 04DEC05  
 Run Date 08DEC05 16:45

U113  
 Sheet 8 of 16  
 RCS - by Area w/TARGET bars  
 as of 04DEC05

**milestone colors**  
 Milestone > 90 days Out  
 Milestone < 90 days Out





Activity ID	Activity Description	Enforceable Milestone	Orig Dur	Rem Dur	Early Start RCS 82105	Early Finish RCS 82105	Anticipated Start	Anticipated Finish	Variance	2006												2007												2008																				
										D	J	F	M	A	M	J	J	A	S	O	N	D	J	F	M	A	M	J	J	A	S	O	N	D	J	F	M	A	M	J	J	A	S	O	N	D	J							
03483	Submit Western Boundary Draft RI Report	24FEB06		0	0		24FEB06		17APR06	-36						*	Submit Western Boundary Draft RI Report 11/2/05 EPA extension granted to 2/24/06																																					
03494	Prepare Final Western Boundary RI Report			75	75	27FEB06	12JUN06	18APR06	02AUG06	-36																																												
03495	Submit Final Western Boundary RI Report			0	0		12JUN06		02AUG06	-36																																												
03496	PLACEHOLDER: Western Boundary FS			132	132			18APR06	24OCT06	0																																												

### Northwest Corner

#### Northwest Corner - Closure FY '07

#### Northwest Corner: Remedial Investigation

03443	Air Dispersion Model			140*	0*	16MAR05A	26AUG05A	16MAR05A	26AUG05A	0
N01500	Prepare Draft NWC Interim GW Monitoring Plan			37*	0*			10OCT05A	01DEC05A	0
N01502	Submit Draft NWC Interim GW Monitoring Plan			0	0				01DEC05A	0
03444	Prepare Draft Northwest Corner RI Rpt			135*	50*	02AUG05A	15FEB06	02AUG05A	15FEB06	0
NW1150	Submit Draft Northwest Corner RI Rpt	15FEB06		0	0		15FEB06		15FEB06	0
N01520	Prepare Final NWC Interim GW Monitoring Plan			77*	76*			02DEC05A	24MAR06	0
N01522	Submit Final NWC Interim GW Monitoring Plan			0	0				24MAR06	0
03446	Prepare Final Northwest Corner RI Rpt			75*	75*	16FEB06	02JUN06	16FEB06	02JUN06	0
03448	Submit Final Northwest Corner RI Rpt			0	0		02JUN06		02JUN06	0

#### Northwest Corner: Feasibility Study

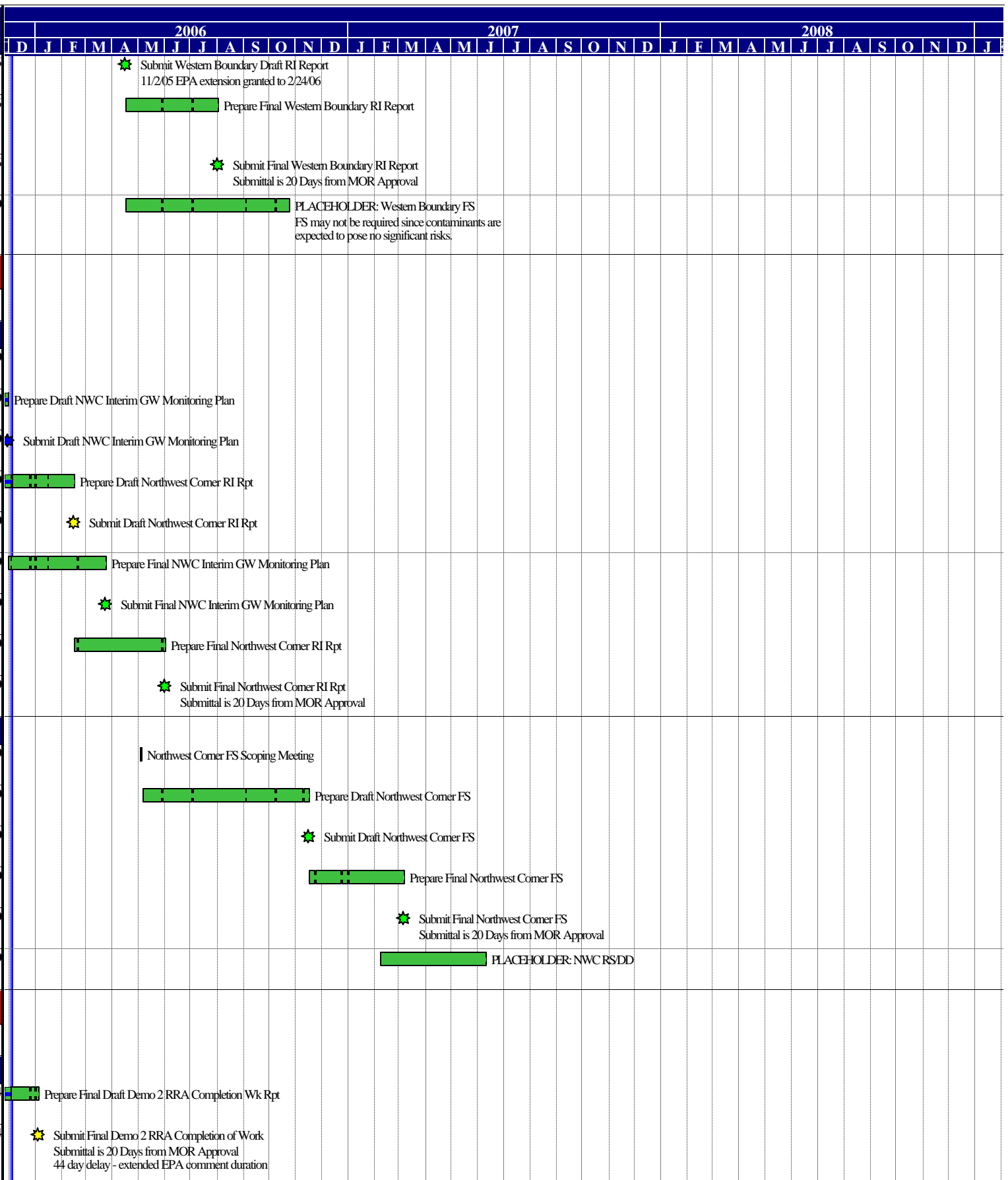
03450	Northwest Corner FS Scoping Meeting	05MAY06		1	1	05MAY06	05MAY06	05MAY06	05MAY06	0
03451	Prepare Draft Northwest Corner FS			135	135	08MAY06	17NOV06	08MAY06	17NOV06	0
03452	Submit Draft Northwest Corner FS	17NOV06		0	0		17NOV06		17NOV06	0
03453	Prepare Final Northwest Corner FS			75	75	20NOV06	07MAR07	17NOV06	07MAR07	0
03454	Submit Final Northwest Corner FS			0	0		07MAR07		07MAR07	0
03455	PLACEHOLDER: NWC RSDD			88	88	08FEB07	11JUN07	08FEB07	11JUN07	0

### Demo 2

#### Demo 2 Soil - Closure FY '06

#### Demo 2 Soil: RRA

01580	Prepare Final Draft Demo 2 RRA Completion Wk Rpt			150*	22*	01JUN05A	28OCT05	01JUN05A	05JAN06	-44
01590	Submit Final Demo 2 RRA Completion of Work			0	0		28OCT05		05JAN06	-44







Activity ID	Activity Description	Enforceable Milestone	Orig Dur	Rem Dur	Early Start RCS 8/21/05	Early Finish RCS 8/21/05	Anticipated Start	Anticipated Finish	Variance	2006												2007												2008															
										D	J	F	M	A	M	J	J	A	S	O	N	D	D	J	F	M	A	M	J	J	A	S	O	N	D	D	J	F	M	A	M	J	J	A	S	O	N	D	J
01609	Revise Draft Remedy Selection Plan		38	38	22MAY07	13JUL07	17OCT07	10DEC07	-105																																								
01611	Submit Remedy Selection Plan	13JUL07	0	0		13JUL07		10DEC07	-105																																								
01613	Public Comment Period		21	21	16JUL07	13AUG07	11DEC07	10JAN08	-105																																								
01615	Draft Decision Doc/ Response Summary	27AUG07	7	7	14AUG07	22AUG07	11JAN08	21JAN08	-105																																								
01623	EPA Prepare Final Draft Dec Doc/Response Sum		6	6	23AUG07	30AUG07	22JAN08	29JAN08	-105																																								
01624	EPA Submit Final Decision Doc/ Response Summary		0	0		30AUG07		29JAN08	-105																																								

## Gun & Mortar

### Gun & Mortar Soils

#### Gun & Mortar Soils: Remedial Investigation

Activity ID	Activity Description	Enforceable Milestone	Orig Dur	Rem Dur	Early Start	Early Finish	Anticipated Start	Anticipated Finish	Variance	Gantt Chart (2006-2008)																																			
00606	Prepare Draft G&M GW & Soil RI Workplan		78*	81*	17NOV05	30DEC05	08DEC05A	31MAR06	-62																																				
00607	Submit Draft G&M GW & Soil RI Workplan	30DEC05	0	0		30DEC05		31MAR06	-62																																				
00608	Prepare Final G&M GW & Soil RI Workplan		75	75	03JAN06	19APR06	03APR06	18JUL06	-62																																				
00609	Submit Final G&M GW & Soil RI Workplan		0	0		19APR06		18JUL06	-62																																				
00610	PLACEHOLDER: Implement G&M RI Soil Field Program		85	85	23MAR06	21JUL06	20JUN06	19OCT06	-62																																				
00611	Lab Analysis Data Validation G&M RI Soil		100	100	12APR06	31AUG06	11JUL06	04DEC06	-62																																				
00555	Prepare Draft G&M Soil RI Report		135	135	14JUL06	26JAN07	12OCT06	25APR07	-63																																				
01000	Prepare Draft G&M Soil GP-6 Letter Report		43	0	27APR05A	01JUL05A	27APR05A	01JUL05A	0																																				
01100	Submit Draft G&M Soil GP-6 Letter Report	22JUN05	N	0		01JUL05A		01JUL05A	0																																				
01200	Prepare Final G&M Soil GP-6 Letter Report		149*	44*	05JUL05A	01DEC05	05JUL05A	07FEB06	-45																																				
01210	Submit Final G&M Soil GP-6 Letter Report		0	0		01DEC05		07FEB06	-45																																				
00556	Submit Draft G&M Soil RI Report	26JAN07	0	0		26JAN07		25APR07	-63																																				
00557	Prepare Final G&M Soil RI Report		75	75	29JAN07	11MAY07	26APR07	09AUG07	-63																																				
00558	Submit Final G&M Soil RI Report		0	0		11MAY07		09AUG07	-63																																				

#### Gun & Mortar Soils: Feasibility Study

00559	Scoping Meeting for G&M Soils FSSR		1	1	29JAN07	29JAN07	26APR07	26APR07	-63																																				
00560	G&M Soils FS Screening Report Preparation		30	30	30JAN07	12MAR07	27APR07	07JUN07	-63																																				
00561	Submit Draft G&M Soils FS Screening Report		0	0		12MAR07		07JUN07	-63																																				
00562	Prepare Final G&M Soils Draft FS Screening Report		75	75	13MAR07	25JUN07	08JUN07	21SEP07	-63																																				

Start Date: 01FEB03  
 Finish Date: 20DEC69  
 Data Date: 04DEC05  
 Run Date: 08DEC05 16:45

U113  
 Sheet 12 of 16  
 RCS - by Area w/TARGET bars  
 as of 04DEC05

**milestone colors**

- Milestone > 90 days Out
- Milestone < 90 days Out



Activity ID	Activity Description	Enforceable Milestone	Orig Dur	Rem Dur	Early Start RCS 82105	Early Finish RCS 82105	Anticipated Start	Anticipated Finish	Variance	2006												2007												2008												
										D	J	F	M	A	M	J	J	A	S	O	N	D	D	J	F	M	A	M	J	J	A	S	O	N	D	D	J	F	M	A	M	J	J	A	S	O
<b>Former K Range</b>																																														
<b>Former K Range - Closure FY '06</b>																																														
<b>Former K Range: Remedial Investigation</b>																																														
01506	Field Investigation Former K			15	0	11AUG04A	15APR05A	11AUG04A	15APR05A	0																																				
01507	Receive/Validate Former K Data			45	0	31AUG04A	13JUN05A	31AUG04A	13JUN05A	0																																				
01508	Prepare Former K Range RI Report			50	0	02MAY05A	03NOV05	02MAY05A	03NOV05A	0																																				
01509	Submit Draft Former K Range RI Report	03NOV05	Y	0	0		03NOV05		03NOV05A	0																																				
01510	Prepare Final Draft Former K Range RI Report			75	56	04NOV05	24FEB06	04NOV05A	24FEB06	0	Prepare Final Draft Former K Range RI Report Note: Draft recommends that NO RRA is required. awaiting agency comments																																			
01511	Submit Final Former K Range RI Report			0	0		24FEB06		24FEB06	0	Submit Final Former K Range RI Report Submittal is 20 Days from MOR Approval																																			
01530	Prepare Draft K Range Interim GW Monitoring Plan			26*	9*			07NOV05A	15DEC05	0	Prepare Draft K Range Interim GW Monitoring Plan																																			
K01500	Submit Draft K Range Interim GW Monitoring Plan			0	0				15DEC05	0	Submit Draft K Range Interim GW Monitoring Plan																																			
01550	Prepare Final K Range Interim GW Monitoring Plan			75*	75*			16DEC05	05APR06	0	Prepare Final K Range Interim GW Monitoring Plan																																			
01552	Submit Final K Range Interim GW Monitoring Plan			0	0				05APR06	0	Submit Final K Range Interim GW Monitoring Plan																																			
01720	PLACEHOLDER: Former K: FSSR/FS			331	331	04NOV05	01MAR07	27JAN06	18MAY07	-56	PLACEHOLDER: Former K: FSSR/FS																																			
<b>Phase II B</b>																																														
<b>Phase II (b) - Closure FY '06</b>																																														
<b>Phase II (b): Remedial Investigation</b>																																														
01560	Prepare Final 2b RI Report			797*	121*	01APR03A	15FEB06	01APR03A	26MAY06	-71	Prepare Final 2b RI Report FS is not currently scheduled since soil contaminants are expected to pose no significant risk. Sites having no work proposed will be grouped together & recommended to be closed out.																																			
01570	Submit Final Phase 2b RI Rpt (TM 02-6)			0	0		15FEB06		26MAY06	-71	Submit Final Phase 2b RI Rpt (TM 02-6) Submittal is 20 Days from MOR Approval																																			
<b>Ammunition Supply Point</b>																																														
<b>Ammunition Supply Point - Closure FY '06</b>																																														
<b>Ammunition Supply Point: RRA</b>																																														
00900	Prepare Draft ASP RRA Work Plan			32	32	03OCT05*	17NOV05	14DEC05*	31JAN06	-48	Prepare Draft ASP RRA Work Plan																																			
00901	Submit Draft ASP RRA Work Plan	31JAN06		0	0		17NOV05		31JAN06	-48	Submit Draft ASP RRA Work Plan																																			
00902	Prepare Final ASP RRA Work Plan			47	47	18NOV05	09MAR06	01FEB06	07APR06	-21	Prepare Final ASP RRA Work Plan Duration assumes accelerated reviews: EPA 10 days, RCL 10 days, Approve CRM 10 days, MOR 5 days, Approve MOR 2 days. Final 20 days.																																			
00903	Submit Final ASP RRA Work Plan			0	0		09MAR06		07APR06	-21	Submit Final ASP RRA Work Plan Submittal is 20 Days from MOR Approval																																			
00904	PLACEHOLDER: Implement ASP RRA Field Program			30	30	09FEB06	25MAY06	13MAR06	21APR06	24	PLACEHOLDER: Implement ASP RRA Field Program																																			
00909	Lab Analysis Data Validation ASP RRA			30	30	02MAR06	22JUN06	31MAR06	11MAY06	29	Lab Analysis Data Validation ASP RRA																																			

**milestone colors**

- Milestone > 90 days Out
- Milestone < 90 days Out





Activity ID	Activity Description	Enforceable Milestone	Orig Dur	Rem Dur	Early Start RCS 82105	Early Finish RCS 82105	Anticipated Start	Anticipated Finish	Variance	2006												2007												2008											
										D J F M A M J J A S O N D												J F M A M J J A S O N D												J F M A M J J A S O N D											
										D	J	F	M	A	M	J	J	A	S	O	N	D	J	F	M	A	M	J	J	A	S	O	N	D	J	F	M	A	M	J	J	A	S	O	N
01595	Submit Final SAR RI Workplan		0	0		16NOV05		19JAN06	-41																																				
01597	Implement SAR RI Field Program		17*	17*	22NOV05*	19JAN06	02FEB06	27FEB06	-26																																				
01607	Validate Data SAR RI Field Program		37*	37*	23DEC05	17MAR06	02FEB06	27MAR06	-6																																				
01598	Prepare Draft SAR RI Report		135	135	27JAN06	08AUG06	06FEB06	16AUG06	-6																																				
01601	Submit Draft SAR RI Report	08AUG06	0	0		08AUG06		16AUG06	-6																																				
01602	Prepare Final SAR RI Report		75	75	09AUG06	27NOV06	17AUG06	06DEC06	-7																																				
01599	Submit Final SAR RI Report		0	0		27NOV06		06DEC06	-7																																				
01756	PLACEHOLDER: SAR: FS		223	223	09AUG06	25JUN07	17AUG06	05JUL07	-7																																				

**Small Arms Range: RRA**

01800	Prepare Draft SAR RRA Work Plan		30	30	03JAN06*	14FEB06	03JAN06*	14FEB06	0																																				
01802	Submit Draft SAR RRA Work Plan	14FEB06	0	0		14FEB06		14FEB06	0																																				
01804	Prepare Final SAR RRA Work Plan		75	75	15FEB06	01JUN06	15FEB06	01JUN06	0																																				
01806	Submit Final SAR RRA Work Plan		0	0		01JUN06		01JUN06	0																																				
01808	PLACEHOLDER: Implement SAR RRA Field Program		30	30	04MAY06	15JUN06	04MAY06	15JUN06	0																																				
01810	Lab Analysis Data Validation SAR RRA		50	50	24MAY06	03AUG06	24MAY06	03AUG06	0																																				
01812	Prepare Draft SAR RRA Completion of Work Rt		45	45	04AUG06	06OCT06	04AUG06	06OCT06	0																																				
01814	Submit Draft SAR RRA Completion of Work Rt	06OCT06	0	0		06OCT06		06OCT06	0																																				
01816	Prepare Final SAR RRA Completion of Work Rt		74	74	10OCT06	26JAN07	10OCT06	26JAN07	0																																				
01818	Submit Final SAR RRA Completion of Work Rt		0	0		26JAN07		26JAN07	0																																				

**Training Area**

**Training Areas**

Training Areas																																														
00890	Prepare Final Training Areas Data Summary Report		254*	52*	15FEB05A	16NOV05	15FEB05A	17FEB06	-62																																					
00895	Submit Final Training Areas Data Summary Report		0	0		16NOV05		17FEB06	-62																																					

milestone colors

- Milestone > 90 days Out
- Milestone < 90 days Out