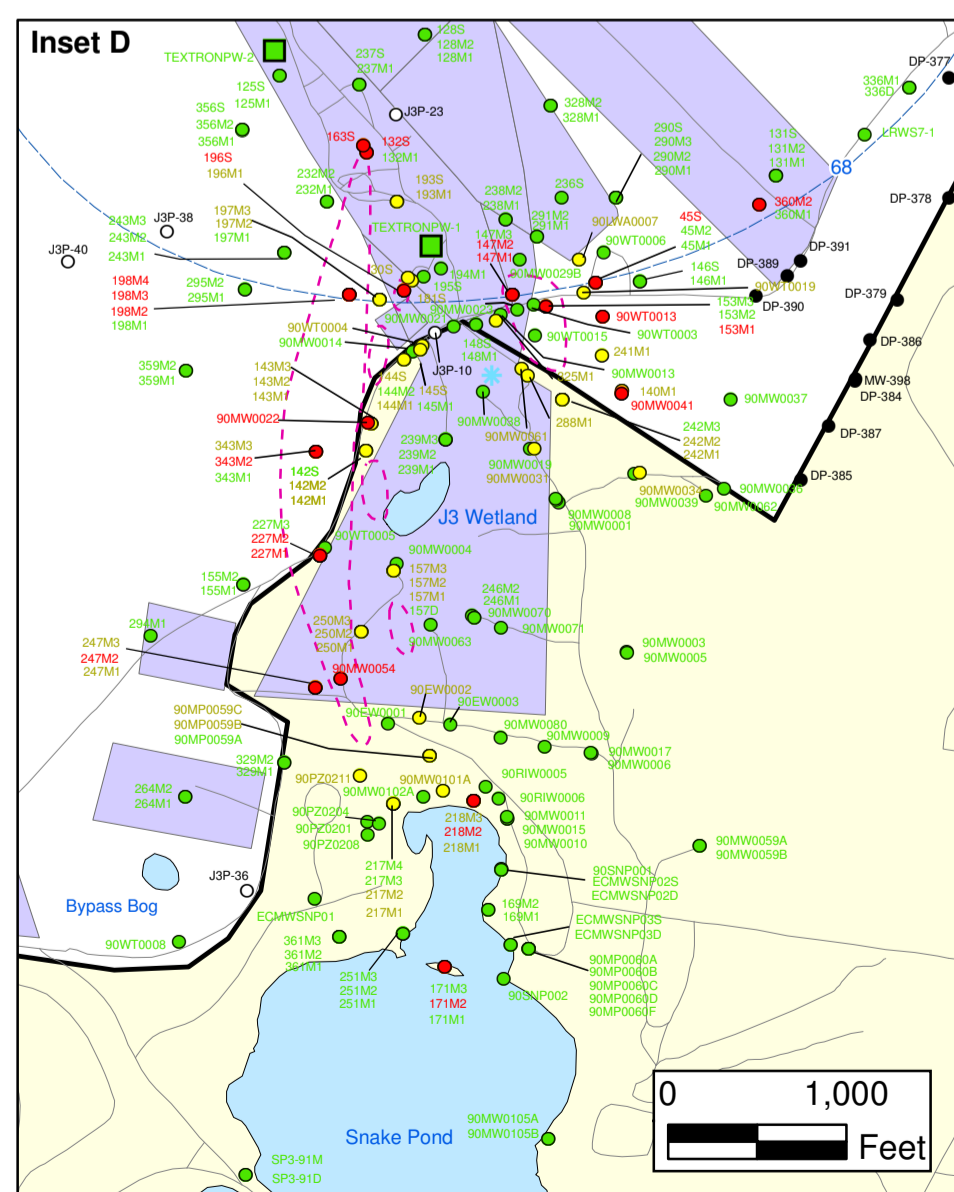
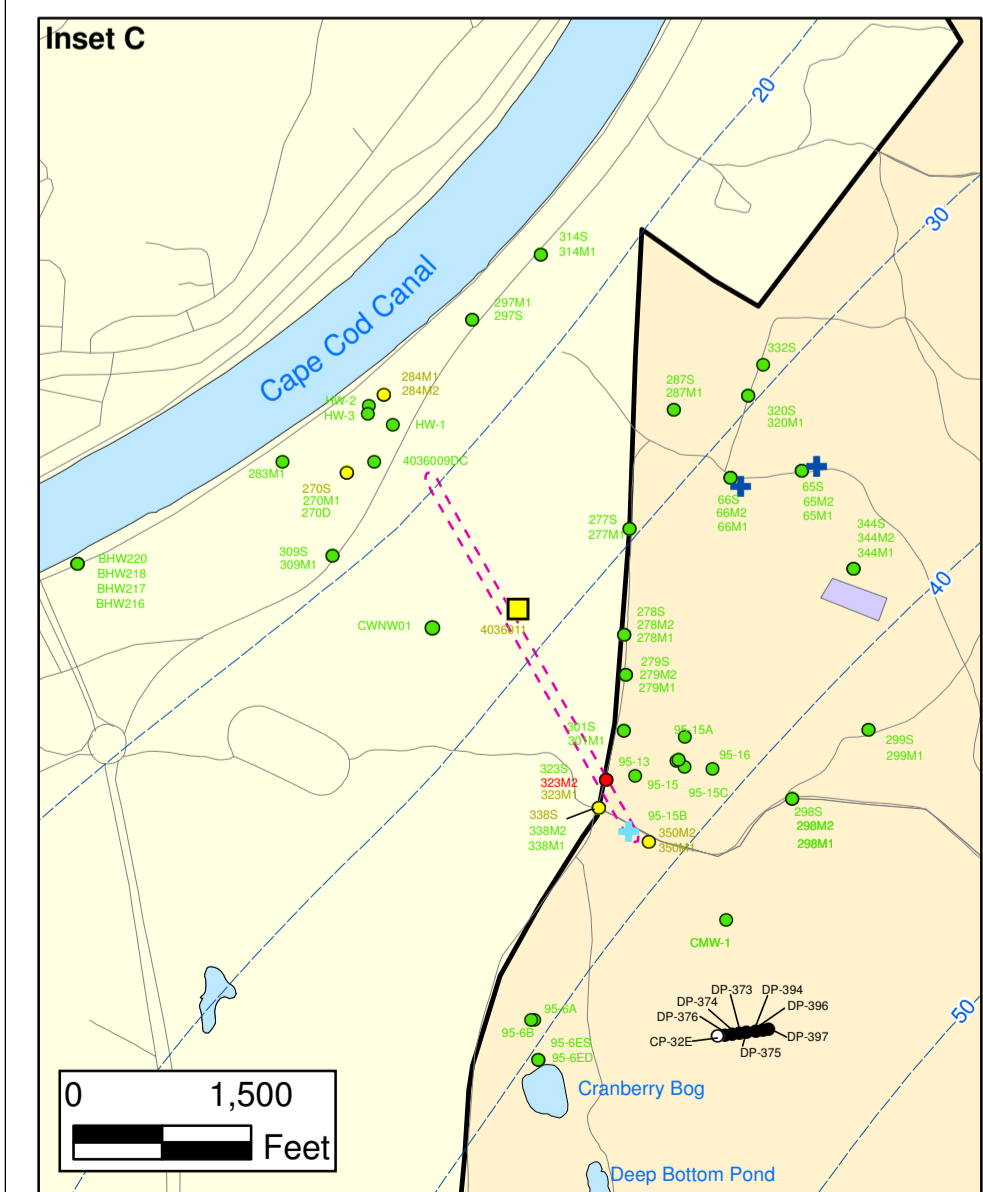
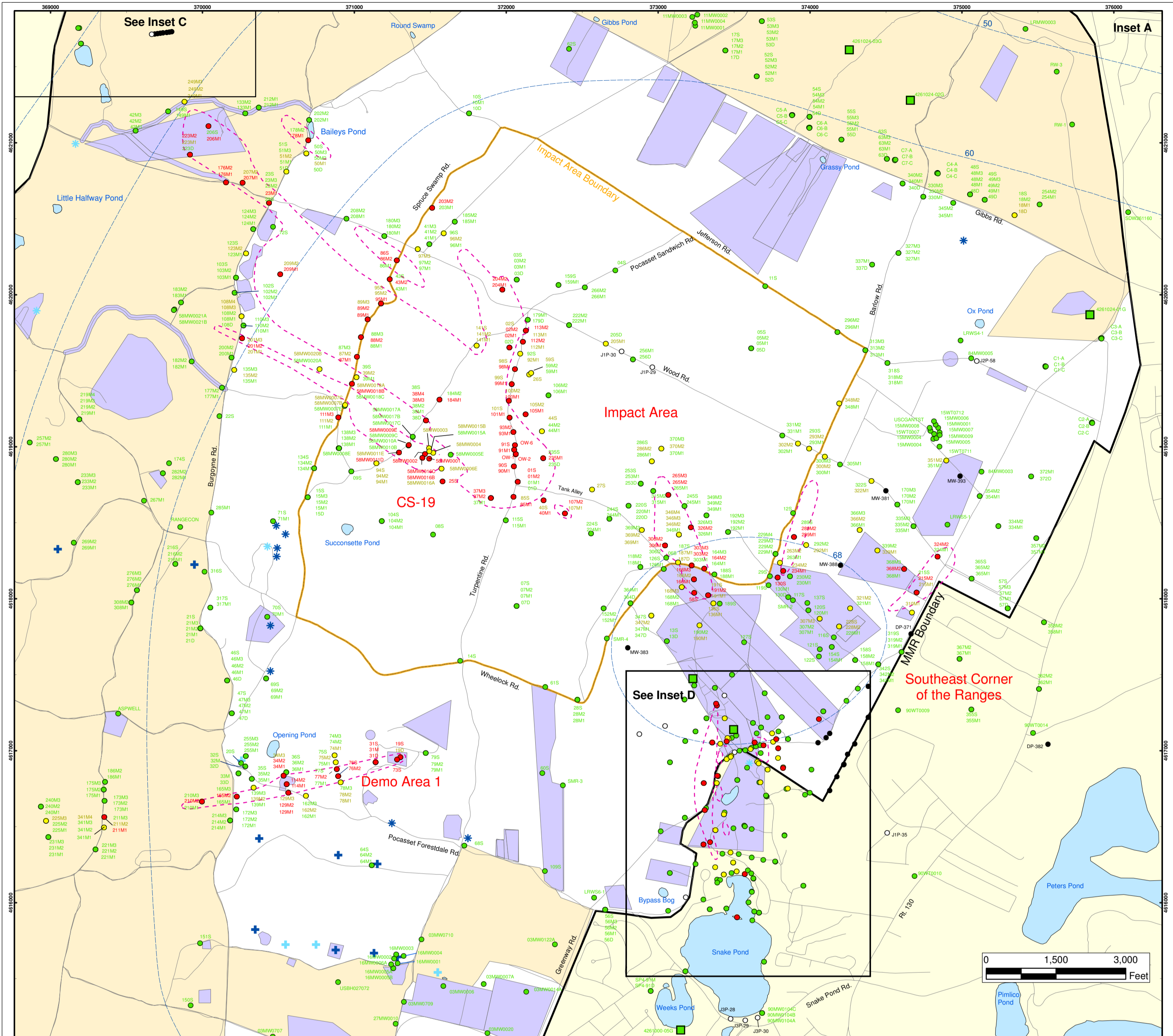


Explosives in Groundwater Compared to Maximum Contaminant Level/Health Advisories Validated Data as of 09/23/05

FIGURE 1



Explosives in Groundwater Compared to Maximum Contaminant Level/Health Advisories

Validated Data as of 09/23/05

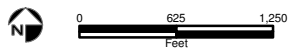
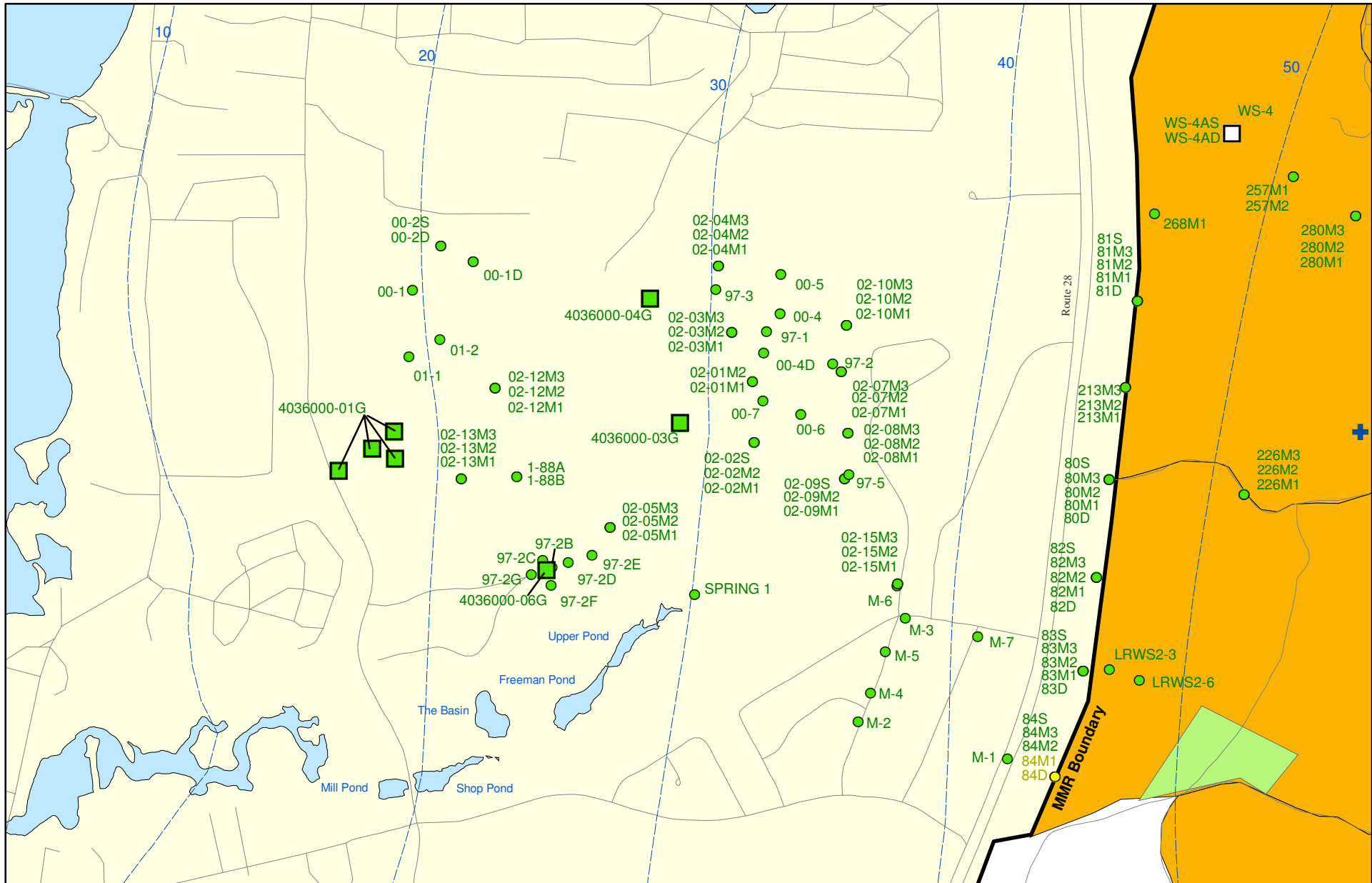
- Validated Detection Greater than or Equal to Maximum Contaminant Level/Health Advisories
- Validated Detection Less than Maximum Contaminant Level/Health Advisories
- Validated Non-Detect
- No Data Available
- Proposed Monitoring Well
- Military Training Areas
- Military Ranges
- Current Gun Position
- Old Gun Position
- Old Mortar Position
- Validated Non-Detect Water Supply Well
- Validated Detection Less than Maximum Contaminant Level/Health Advisories Water Supply Well
- Water Table Contour (Feet NGVD), AMEC, September 2003
- Area of RDX Detections Greater than 2.0 ppb
- Central Impact Area 7/15/03
- Demo 1 12/21/04
- SE Ranges (Jacobs Eng.) 10/21/04
- NWC 1/27/05

Impact Area Groundwater Study Program

AMEC Earth & Environmental, Inc.
Westford, Massachusetts

Sources & Notes
Base map data from US Geological Survey 7 1/2 minute Topographic Maps.
Source: Office of Geographic and Environmental Information (MassGIS)
Commonwealth of Massachusetts
Executive Office of Environmental Affairs

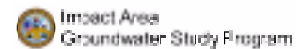
FIGURE 1
Inset Map



Sources & Notes:
 Base map data from US Geological Survey
 7 1/2 minute Topographic maps.
 Source: Office of Geographic and
 Environmental Information (MassGIS)
 Commonwealth of Massachusetts
 Executive Office of Environmental Affairs

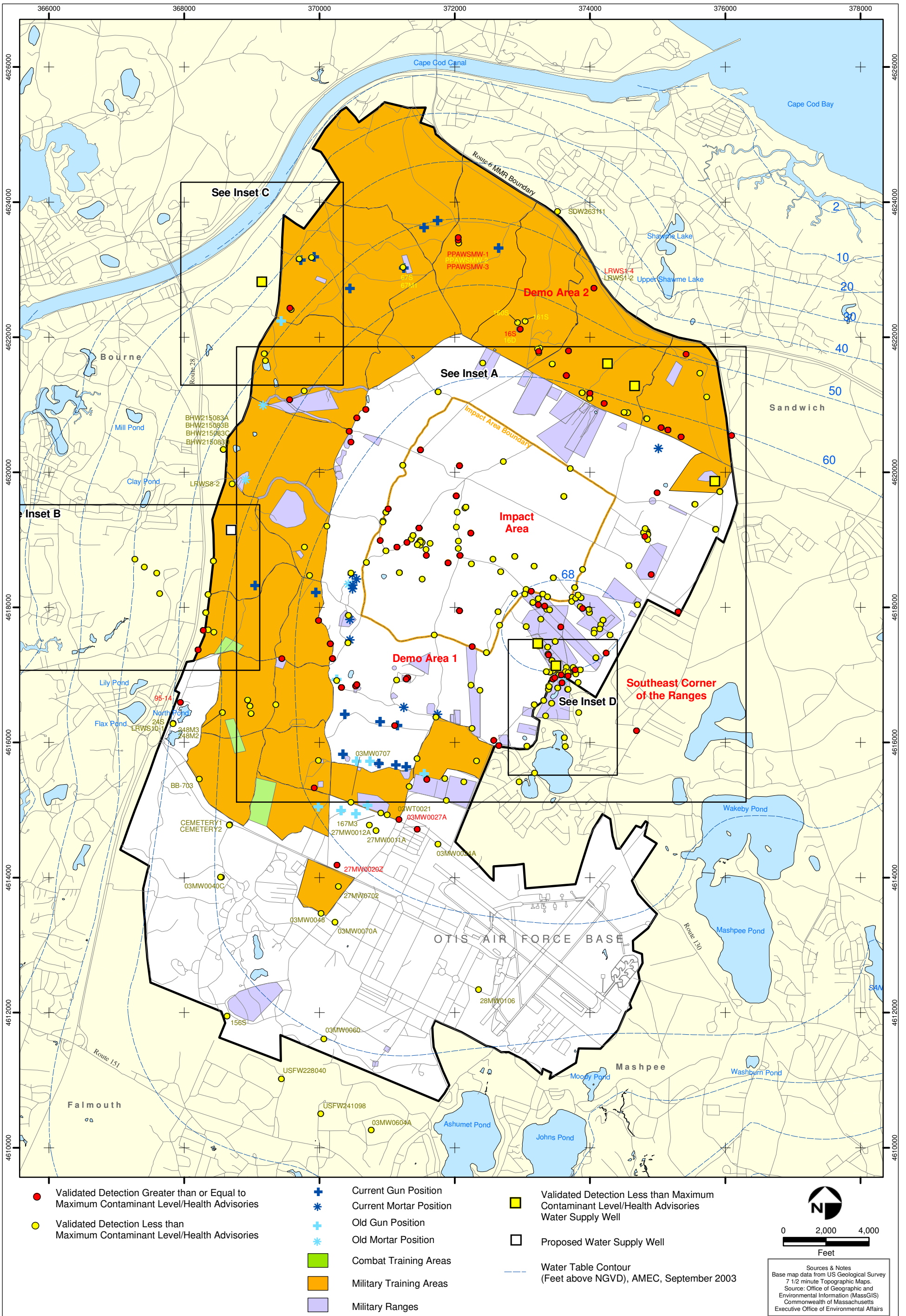
- Validated Detection Less than Maximum Contaminant Level/Health Advisories
- Validated Non-Detect
- + Current Gun Position
- Validated Non-Detect Water Supply Well
- Proposed Water Supply Well
- Combat Training Areas
- Military Training Areas
- Water Table Contour (Feet NGVD)
AMEC, September 2003

Explosives in Groundwater Compared to Maximum Contaminant Level/Health Advisories Validated Data as of 09/23/05



AMEC Earth & Environmental, Inc.
 Westford, Massachusetts

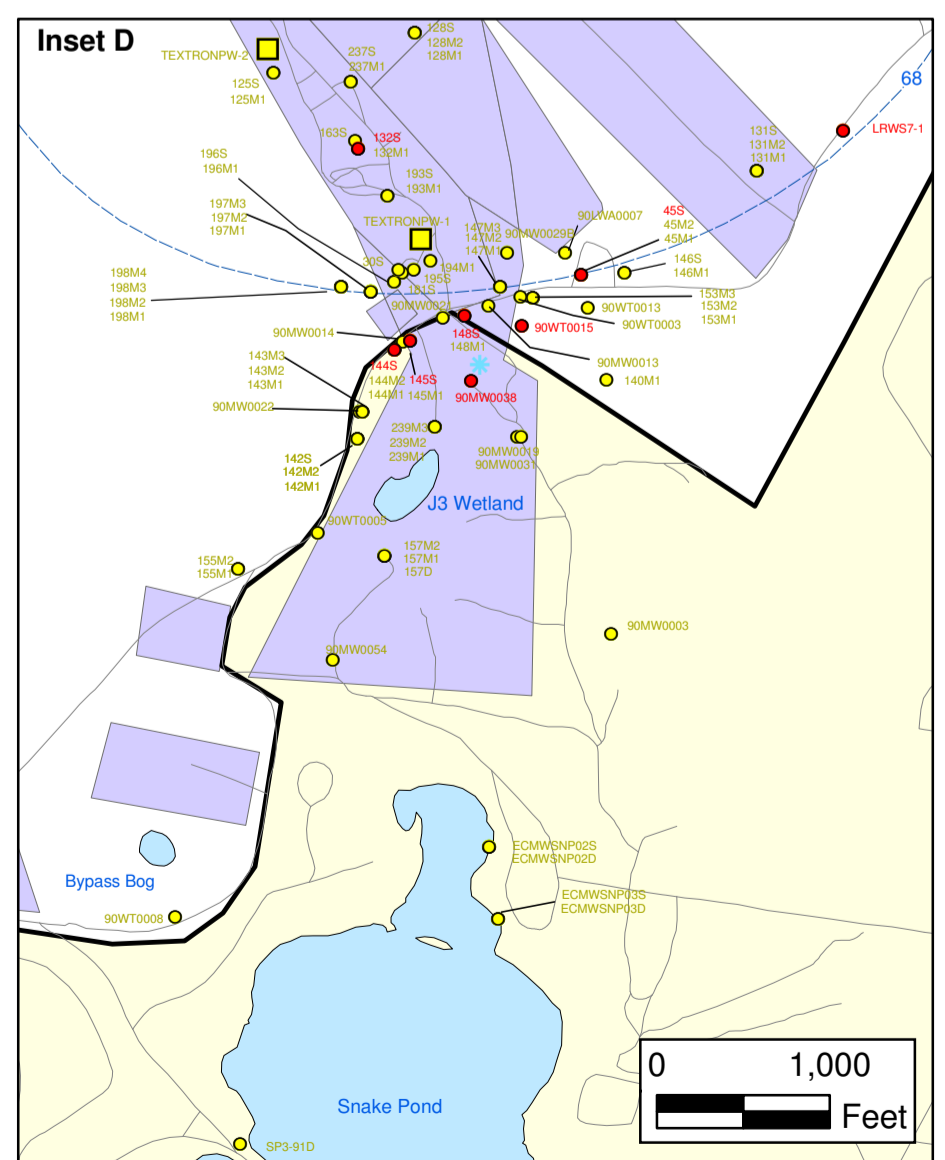
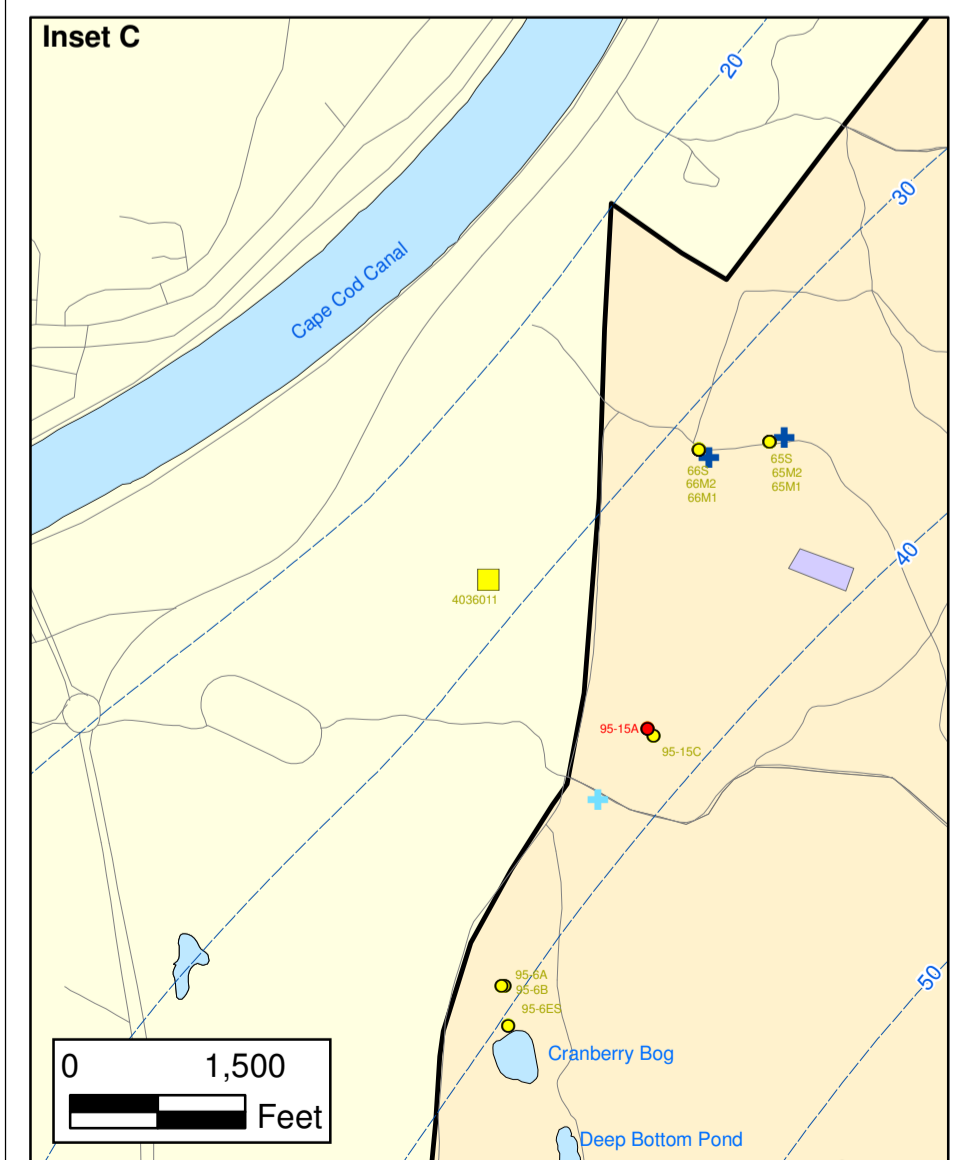
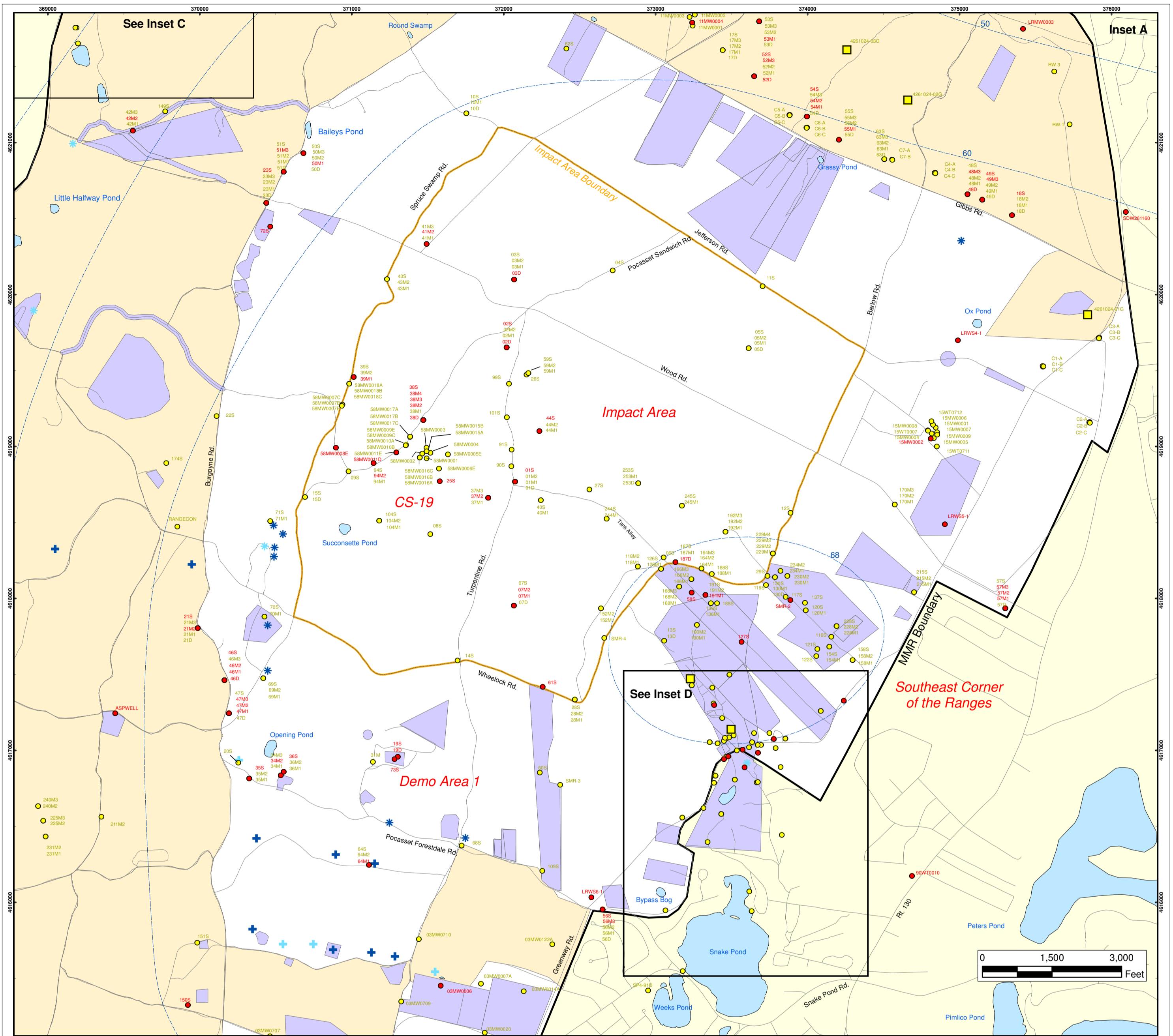
FIGURE
Inset Map B 1



Metals in Groundwater Compared to Maximum Contaminant Level/Health Advisories Validated Data as of 09/23/05

FIGURE 2

AMEC Earth & Environmental, Inc.
 Westford, Massachusetts



Metals in Groundwater Compared to Maximum Contaminant Level/Health Advisories Validated Data as of 09/23/05

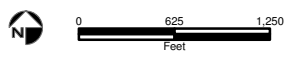
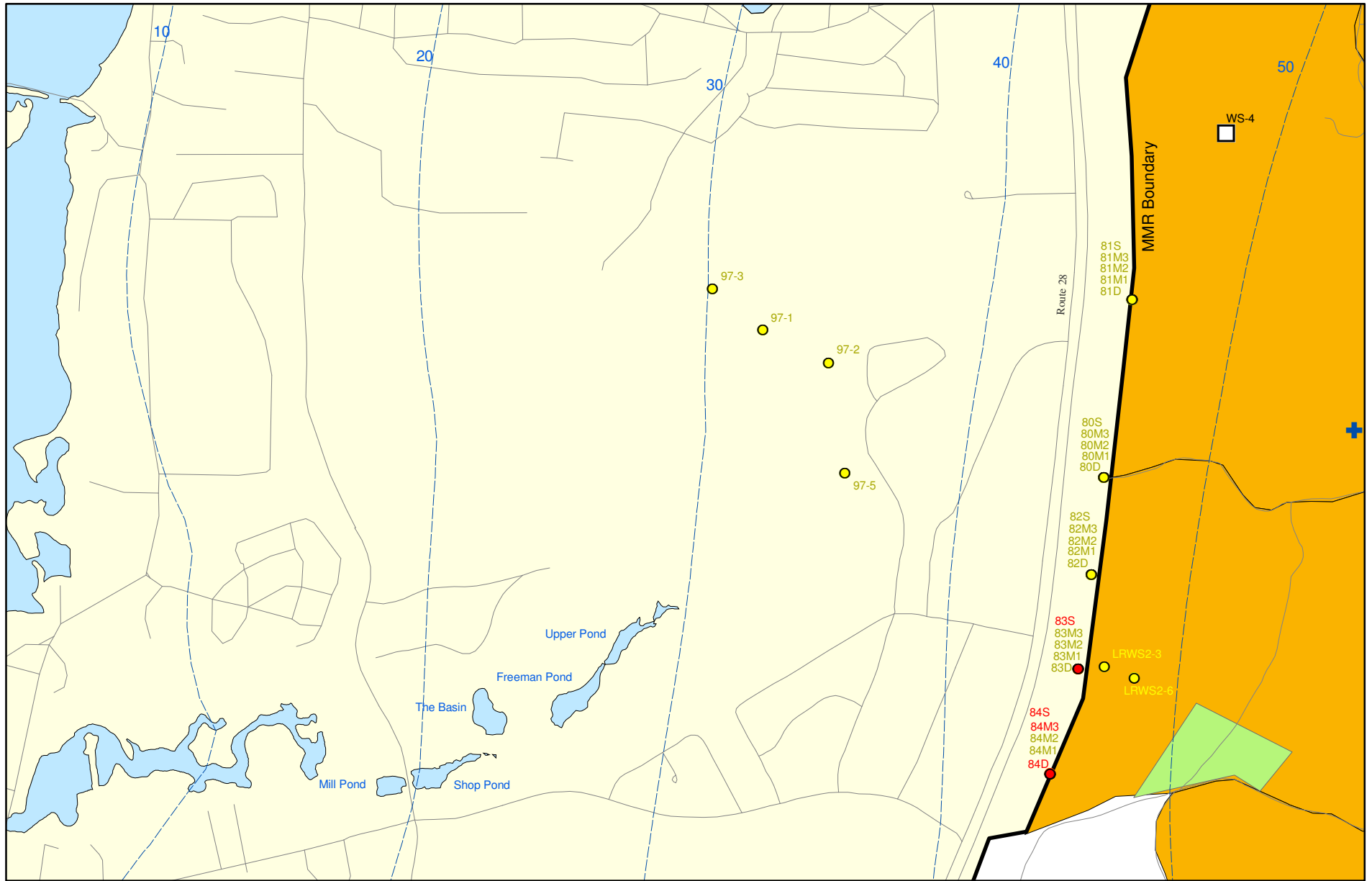
- Validated Detection Greater than or Equal to Maximum Contaminant Level/Health Advisories
- Validated Detection Less than Maximum Contaminant Level/Health Advisories
- Military Training Areas
- Military Ranges
- + Current Gun Position
- * Current Mortar Position
- + Old Gun Position
- * Old Mortar Position
- Validated Detection Less than Maximum Contaminant Level/Health Advisories
- Water Supply Well
- Water Table Contour (Feet NGVD), AMEC, September 2003

Impact Area Groundwater Study Program

Sources & Notes
 Base map data from US Geological Survey
 7.12 minute Topographic Maps
 Source: Office of Geographic and Environmental Information (MassGIS)
 Commonwealth of Massachusetts
 Executive Office of Environmental Affairs

AMEC Earth & Environmental, Inc.
Westford, Massachusetts

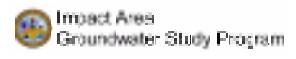
Inset Map 2



Sources & Notes:
 Base map data from US Geological Survey
 7 1/2 minute Topographic maps.
 Source: Office of Geographic and
 Environmental Information (MassGIS)
 Commonwealth of Massachusetts
 Executive Office of Environmental Affairs

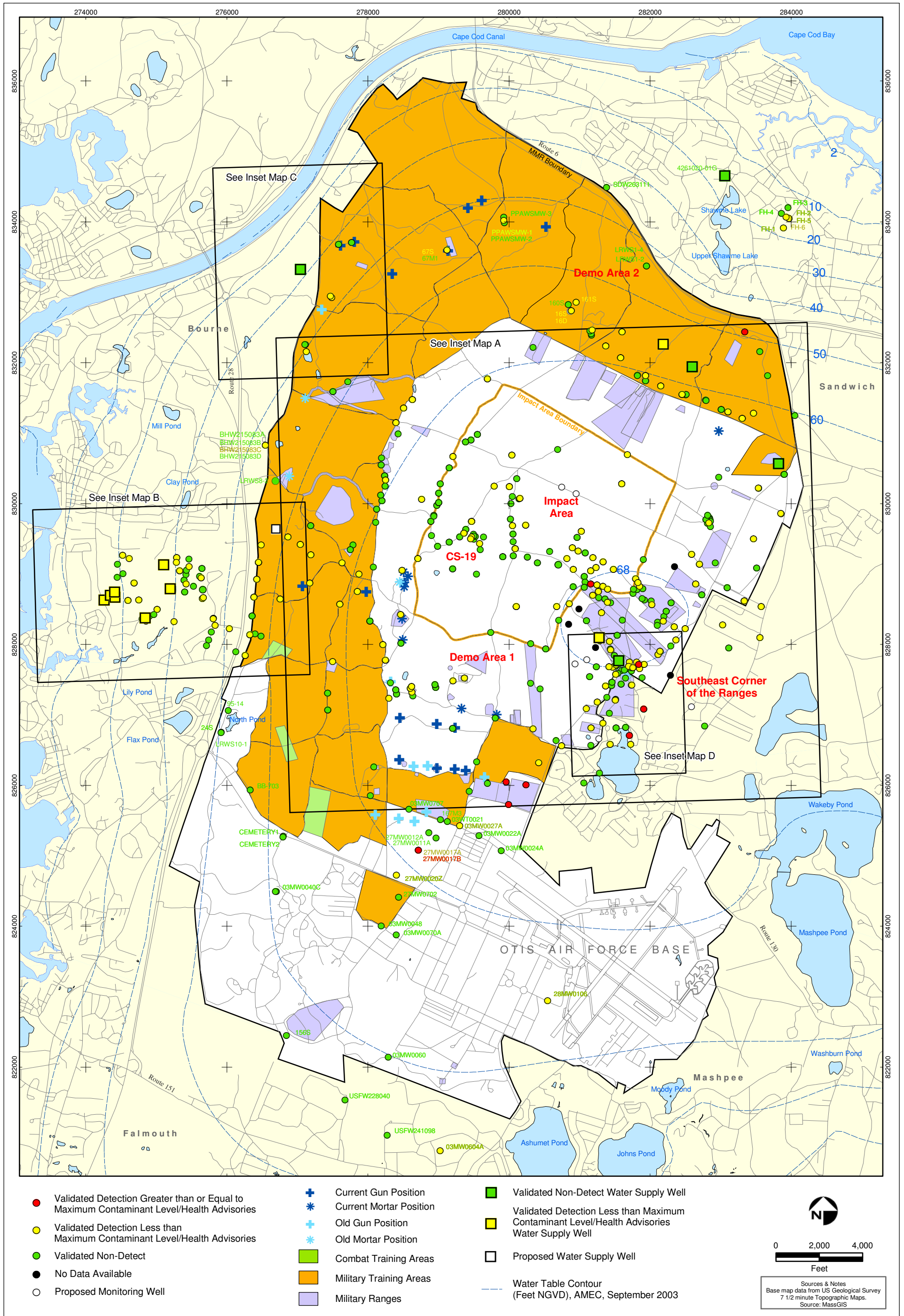
- Validated Detection Greater than or Equal to Maximum Contaminant Level/Health Advisories
- Validated Detection Less than Maximum Contaminant Level/Health Advisories
- +
- Proposed Water Supply Well
- Combat Training Areas
- Military Training Areas
- Water Table Contour (Feet NGVD)
AMEC, September 2003

**Metals in Groundwater Compared to
 Maximum Contaminant Level/Health Advisories
 Validated Data as of 09/23/05**



AMEC Earth & Environmental, Inc.
 Westford, Massachusetts

FIGURE
Inset Map B 2



Volatile Organic Compounds (Excluding Chloroform) in Groundwater Compared to Maximum Contaminant Level/Health Advisories Validated Data as of 09/23/05

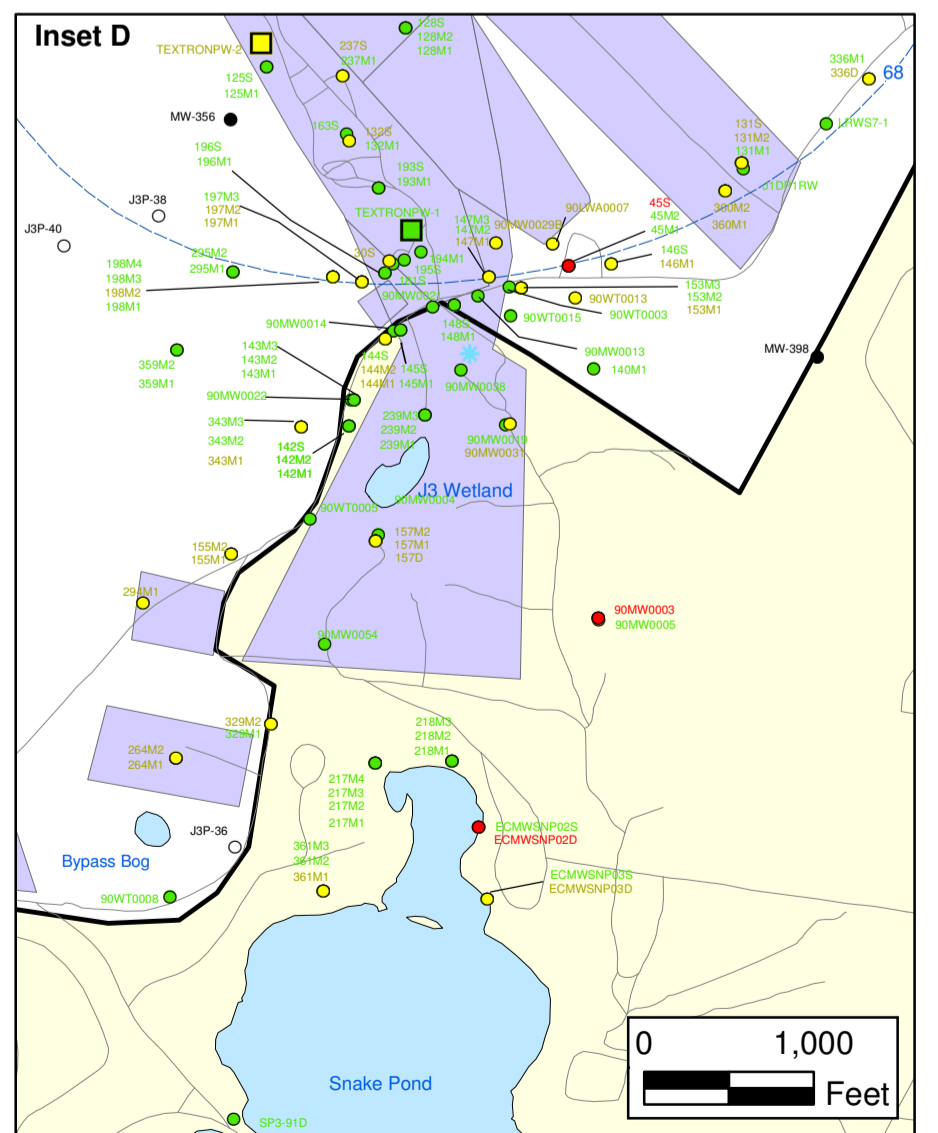
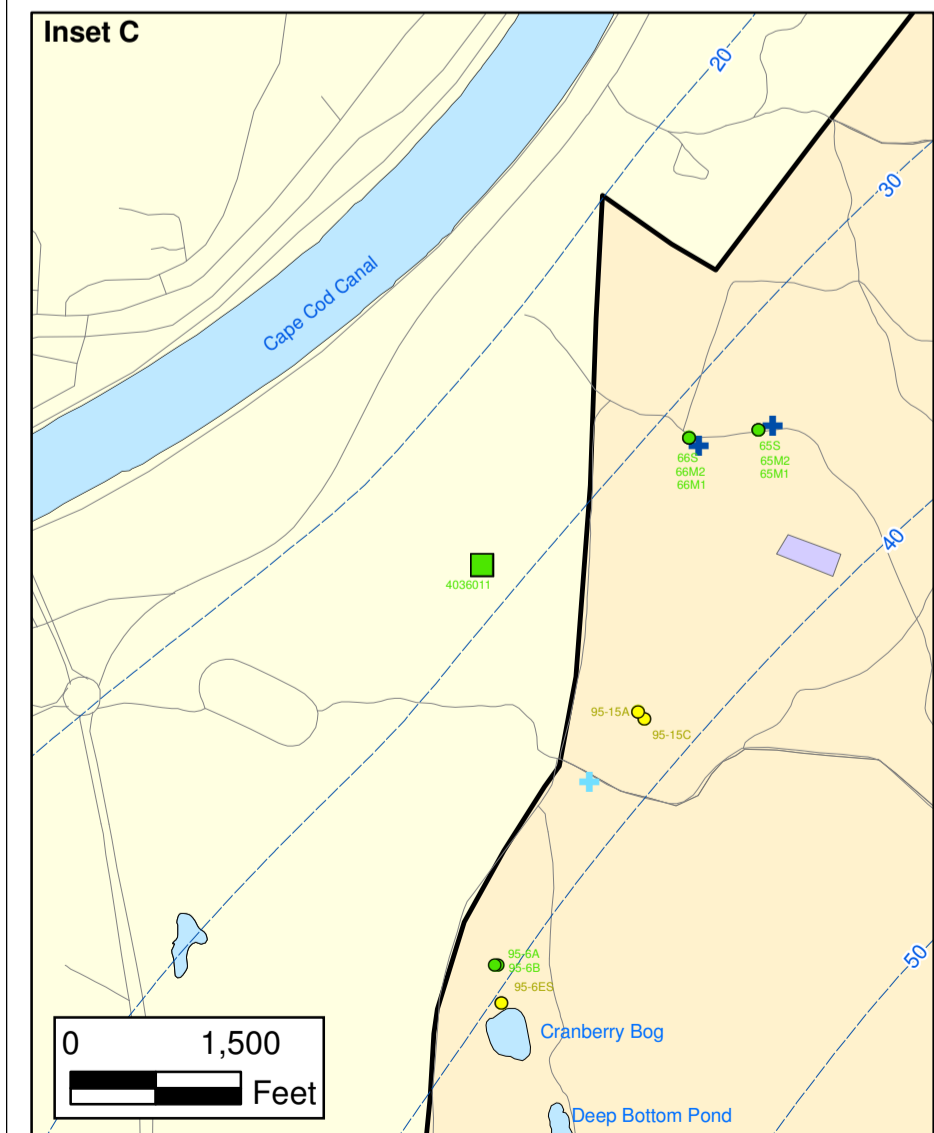
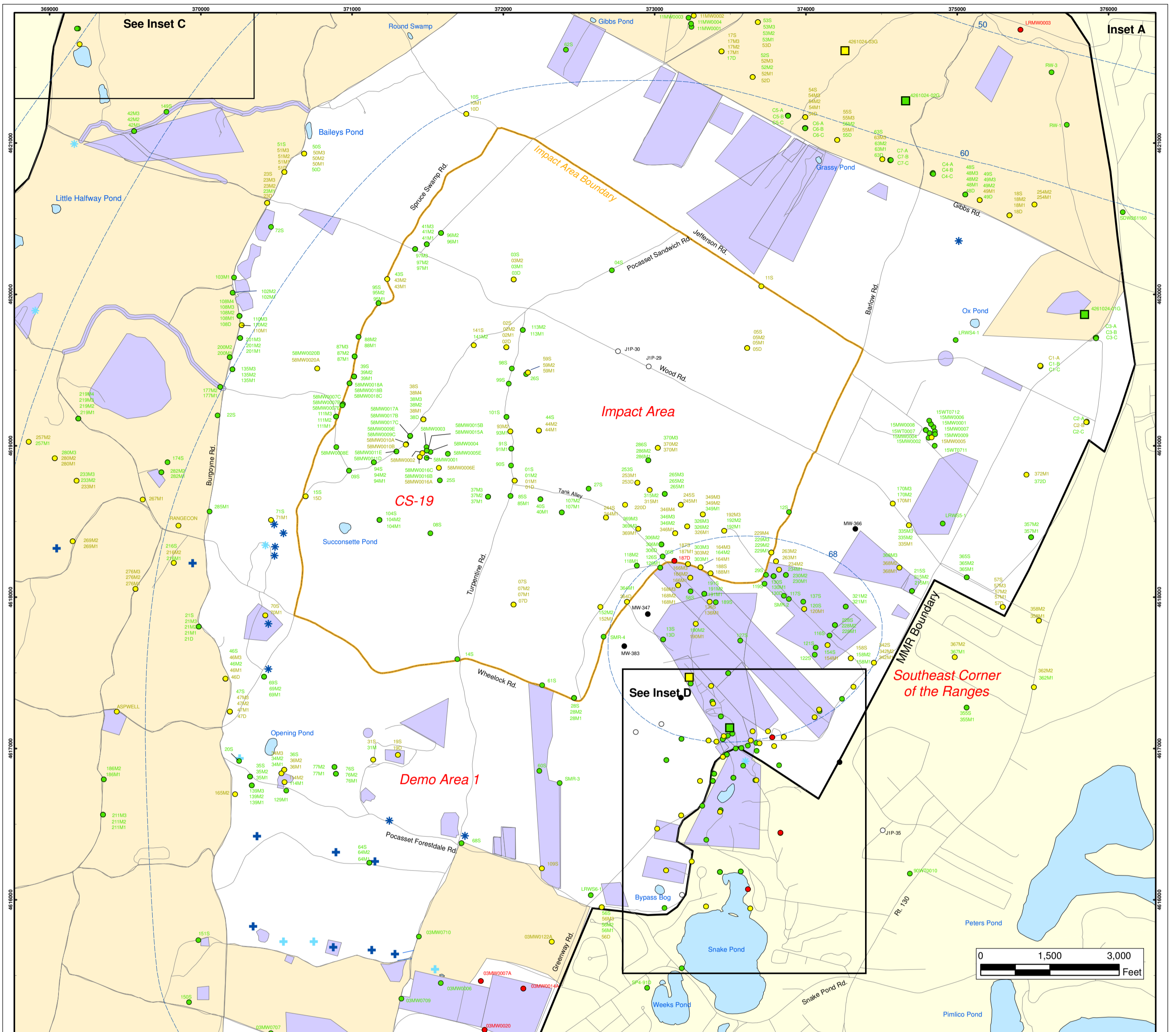
FIGURE 3

AMEC Earth & Environmental, Inc.
Westford, Massachusetts

J:\GIS\Oct2005\monthly\VOC_overall.pdf
G:\MMR_COE\Work2005\Monthly\Oct2005\3_VOC\VOC_overall.mxd
October 1, 2005 DWN: ABF CHKD: MD



Impact Area Groundwater Study Program



Volatile Organic Compounds (Excluding Chloroform) in Groundwater Compared to Maximum Contaminant Level/Health Advisories Validated Data as of 09/23/05

- Validated Detection Greater than or Equal to Maximum Contaminant Level/Health Advisories
- Validated Detection Less than Maximum Contaminant Level/Health Advisories
- Validated Non-Detect
- No Data Available
- Proposed Monitoring Well
- Military Training Areas
- Military Ranges
- ⊕ Current Gun Position
- ⊕ Current Mortar Position
- ⊕ Old Gun Position
- ⊕ Old Mortar Position
- Validated Non-Detect Water Supply Well
- Validated Detection Less than Maximum Contaminant Level/Health Advisories Water Supply Well
- Water Table Contour (Feet NGVD), AMEC, September 2003

Impact Area Groundwater Study Program

AMEC Earth & Environmental, Inc.
Westford, Massachusetts

FIGURE 3
Inset Map

