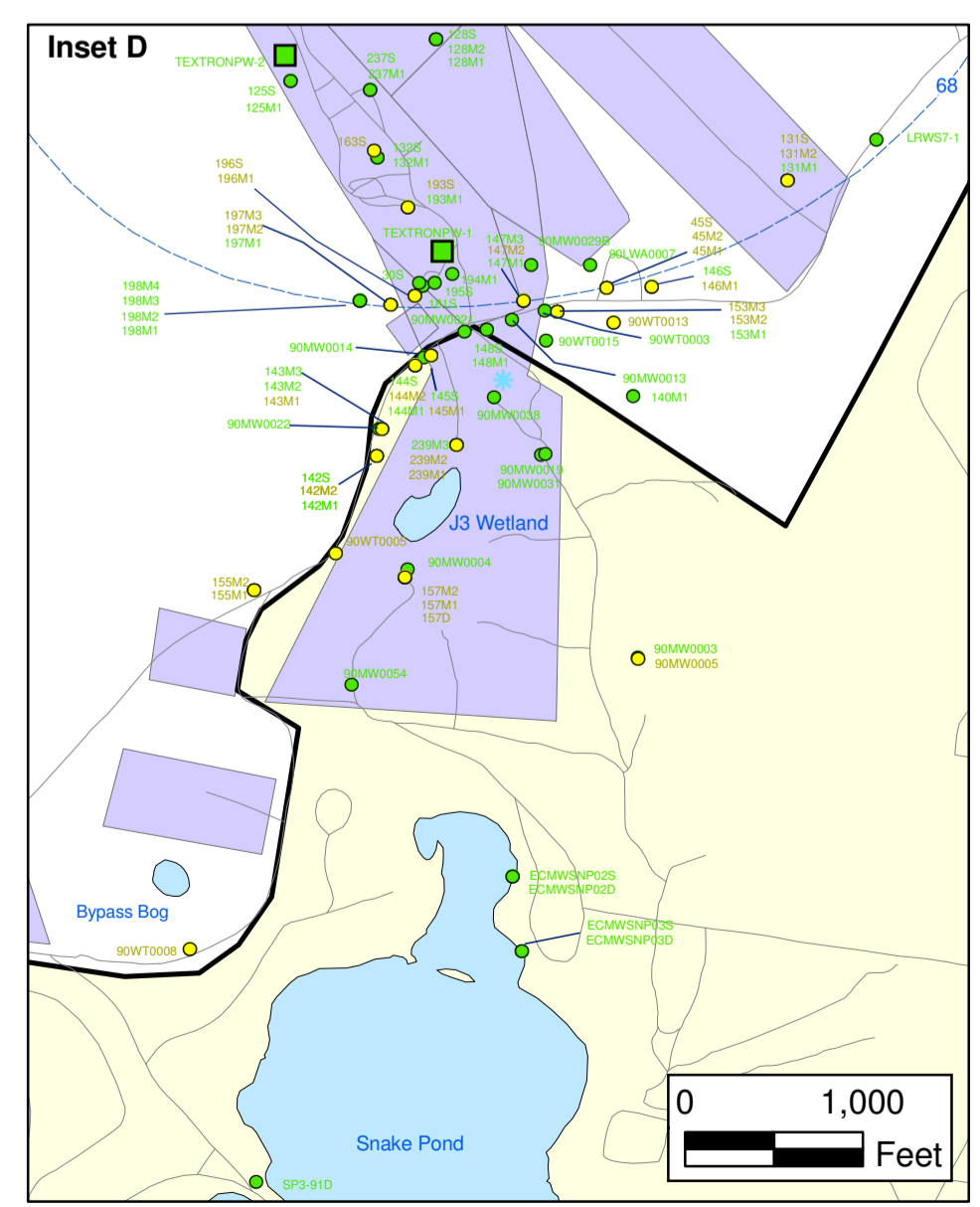
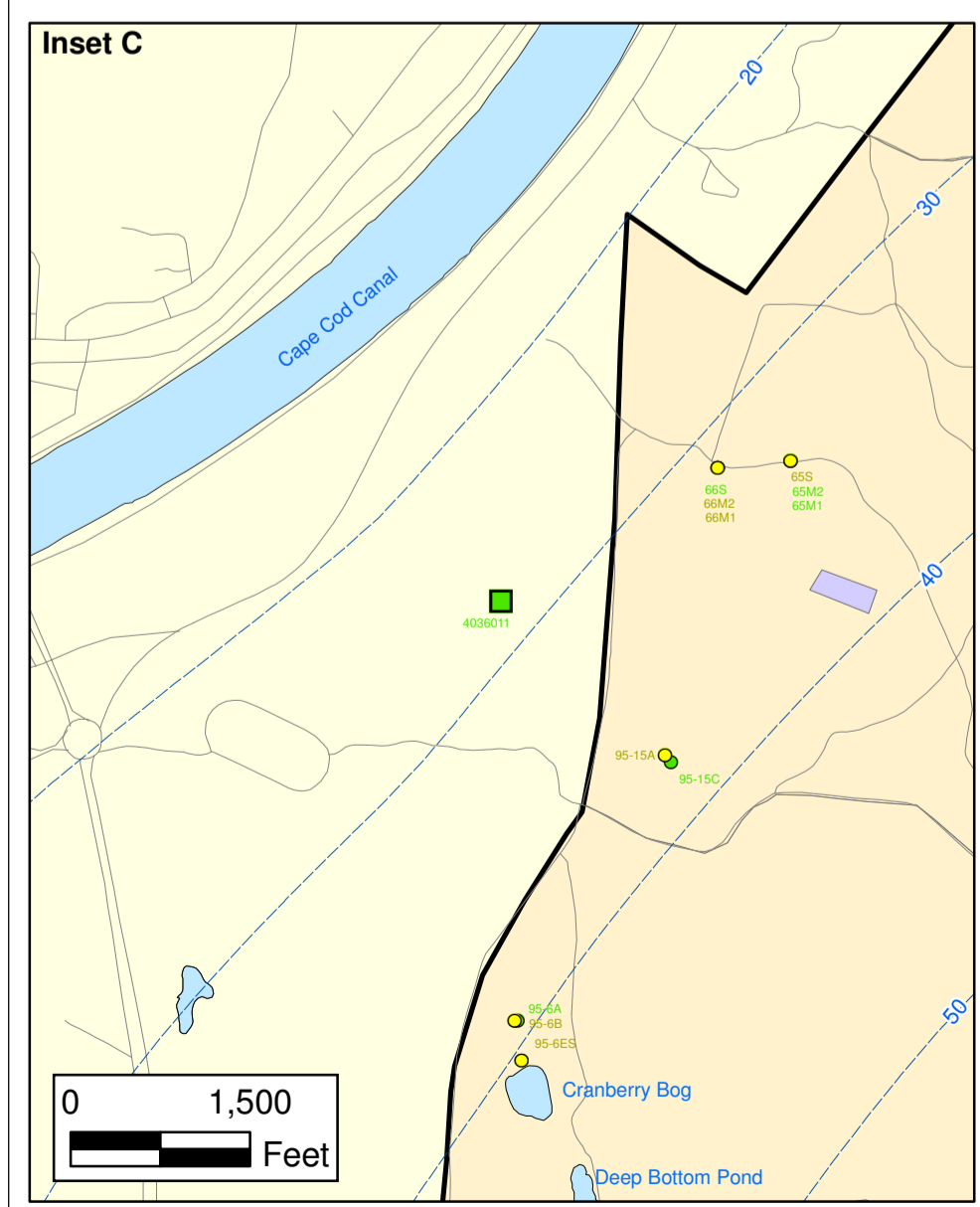
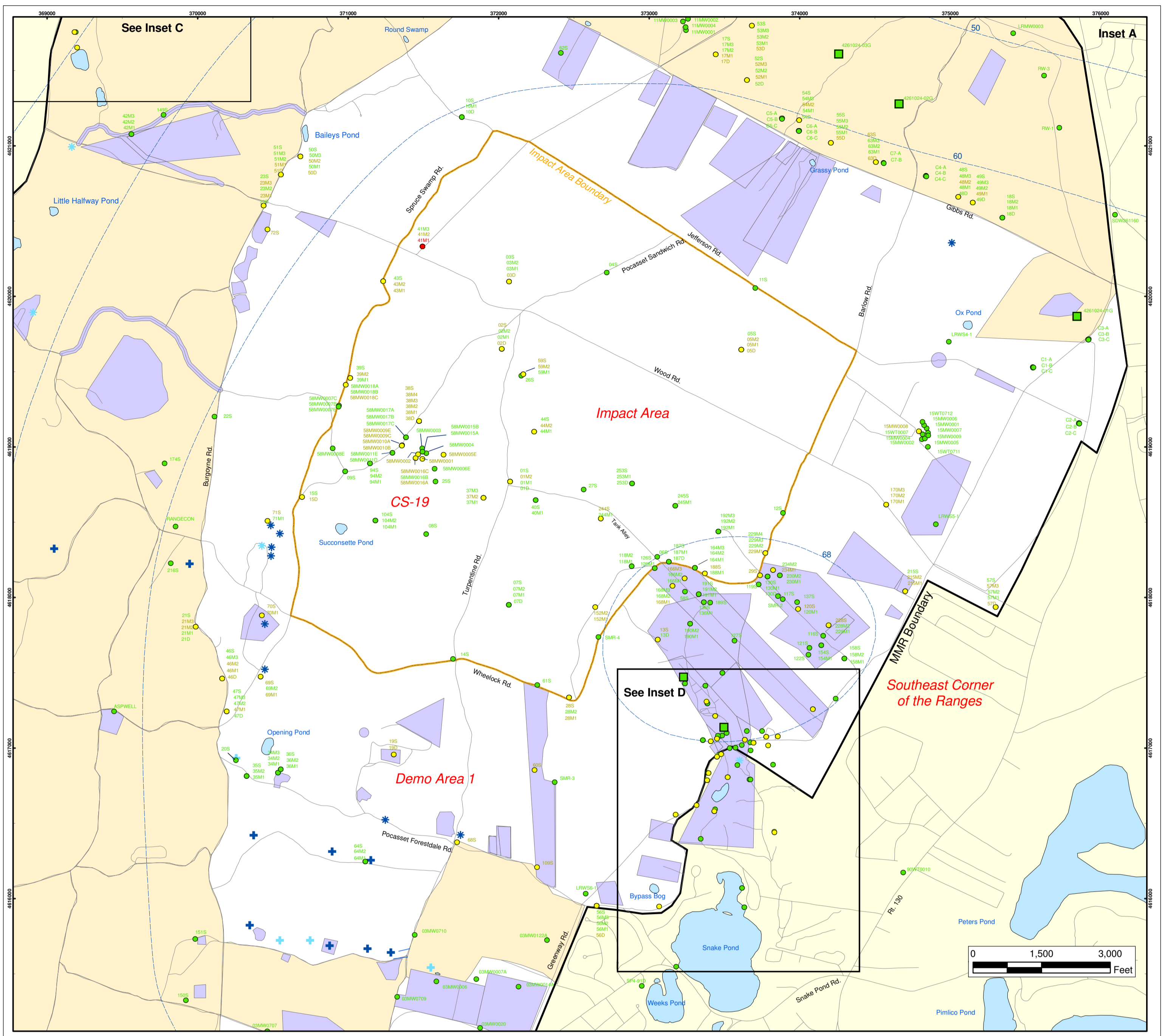


**Herbicides & Pesticides in Groundwater Compared to Maximum Contaminant Level/Health Advisories**  
 Validated Data as of 03/25/05

AMEC Earth & Environmental, Inc.  
 Westford, Massachusetts

FIGURE

7



### Herbicides and Pesticides in Groundwater Compared to Maximum Contaminant Level/Health Advisories Validated Data as of 03/25/05

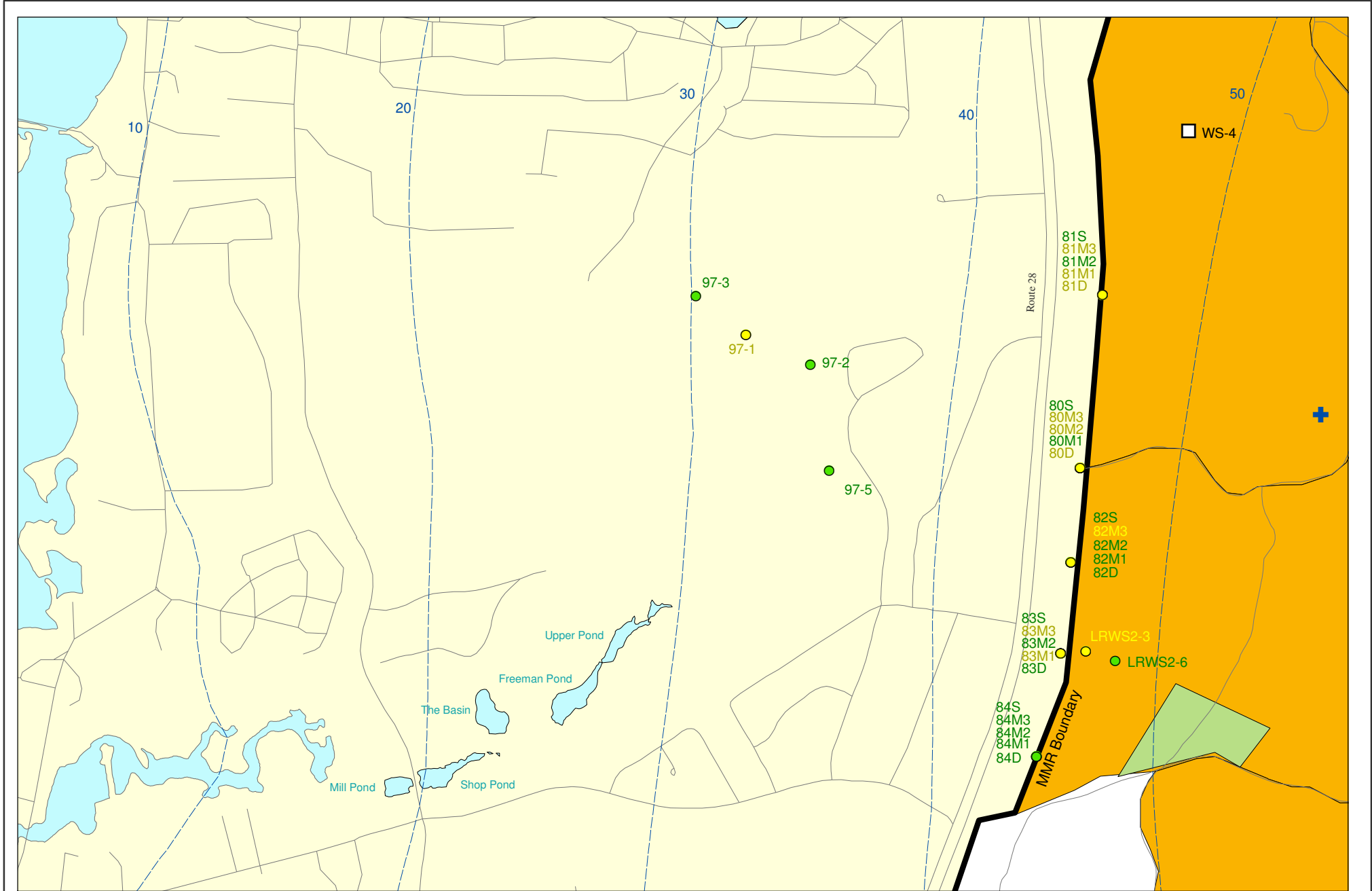
- Validated Detection Greater than or Equal to Maximum Contaminant Level/Health Advisories
- Validated Detection Less than Maximum Contaminant Level/Health Advisories
- Validated Non-Detect
- Military Training Areas
- Military Ranges
- + Current Gun Position
- \* Current Mortar Position
- + Old Gun Position
- \* Old Mortar Position
- Validated Non-Detect Water Supply Well
- Water Table Contour (Feet NGVD), AMEC, September 2003

**Impact Area  
Groundwater Study Program**

Sources & Notes  
Base map data from US Geological Survey  
7 1/2 minute Topographic Maps.  
Source: Office of Geographic and  
Environmental Information (MassGIS)  
Commonwealth of Massachusetts  
Executive Office of Environmental Affairs

AMEC Earth & Environmental, Inc.  
Westford, Massachusetts

**Inset Map**  
**FIGURE 7**



Sources & Notes:  
 Base map data from US Geological Survey  
 7 1/2 minute Topographic maps.  
 Source: Office of Geographic and  
 Environmental Information (MassGIS)  
 Commonwealth of Massachusetts  
 Executive Office of Environmental Affairs

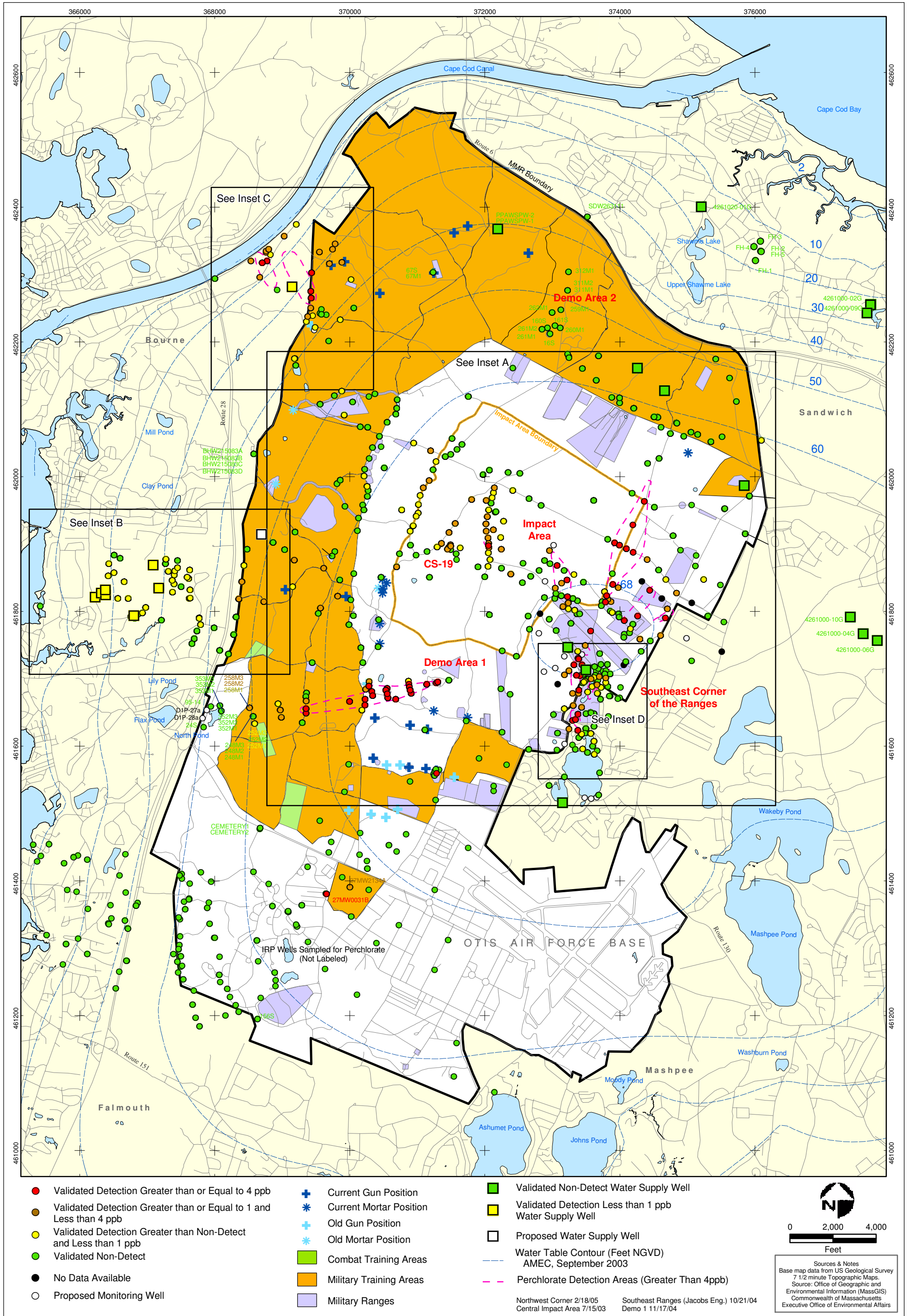
AMEC Earth & Environmental, Inc.  
 Westford, Massachusetts

- Validated Detection Less than Maximum Contaminant Level/Health Advisories
- Validated Non-Detect
- Proposed Water Supply Well
- + Current Gun Position
- Combat Training Areas
- Military Training Areas
- Water Table Contour (Feet NGVD), AMEC, September 2003

**Herbicides & Pesticides in Groundwater Compared to Maximum Contaminant Level/Health Advisories Validated Data as of 03/25/05**

Impact Area  
 Groundwater Study Program

FIGURE  
**Inset Map B** **7**

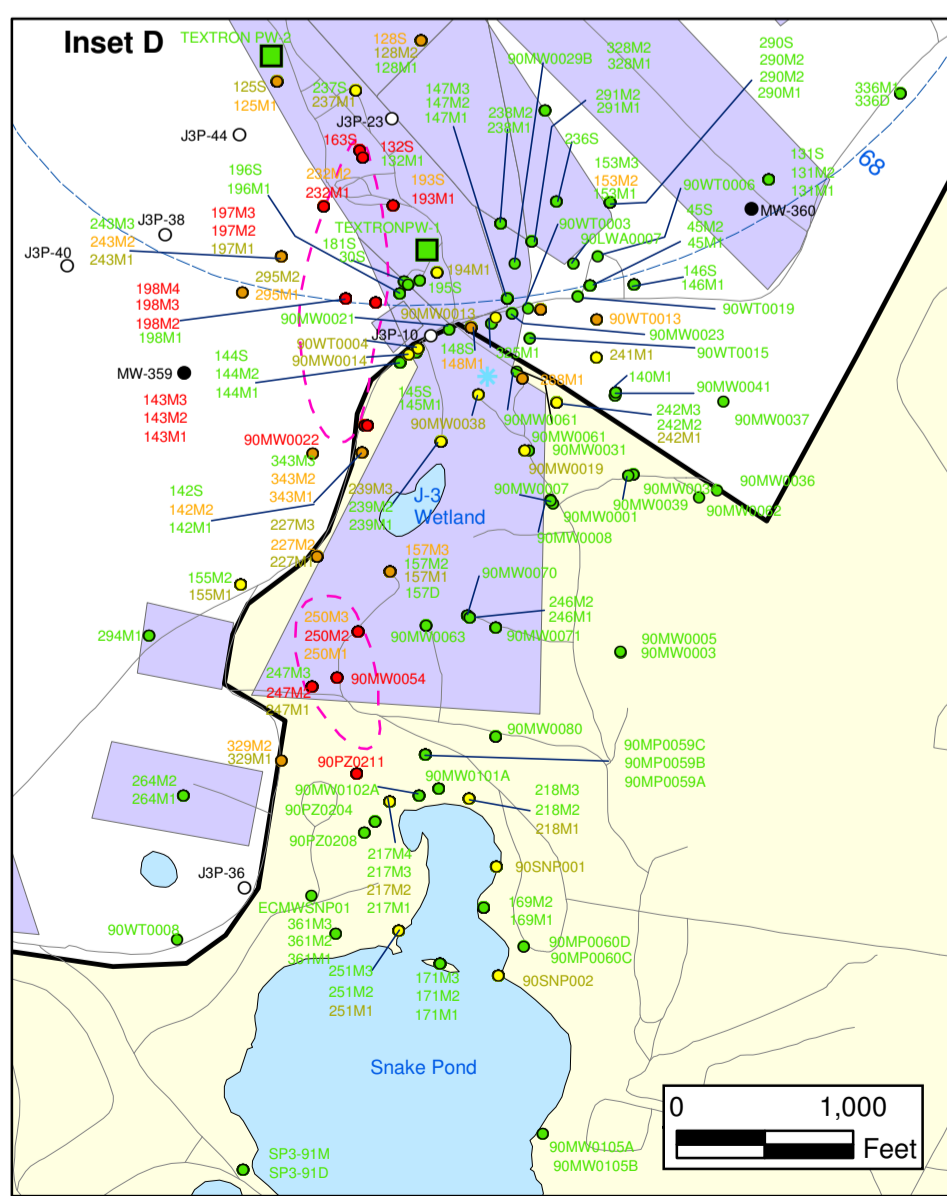
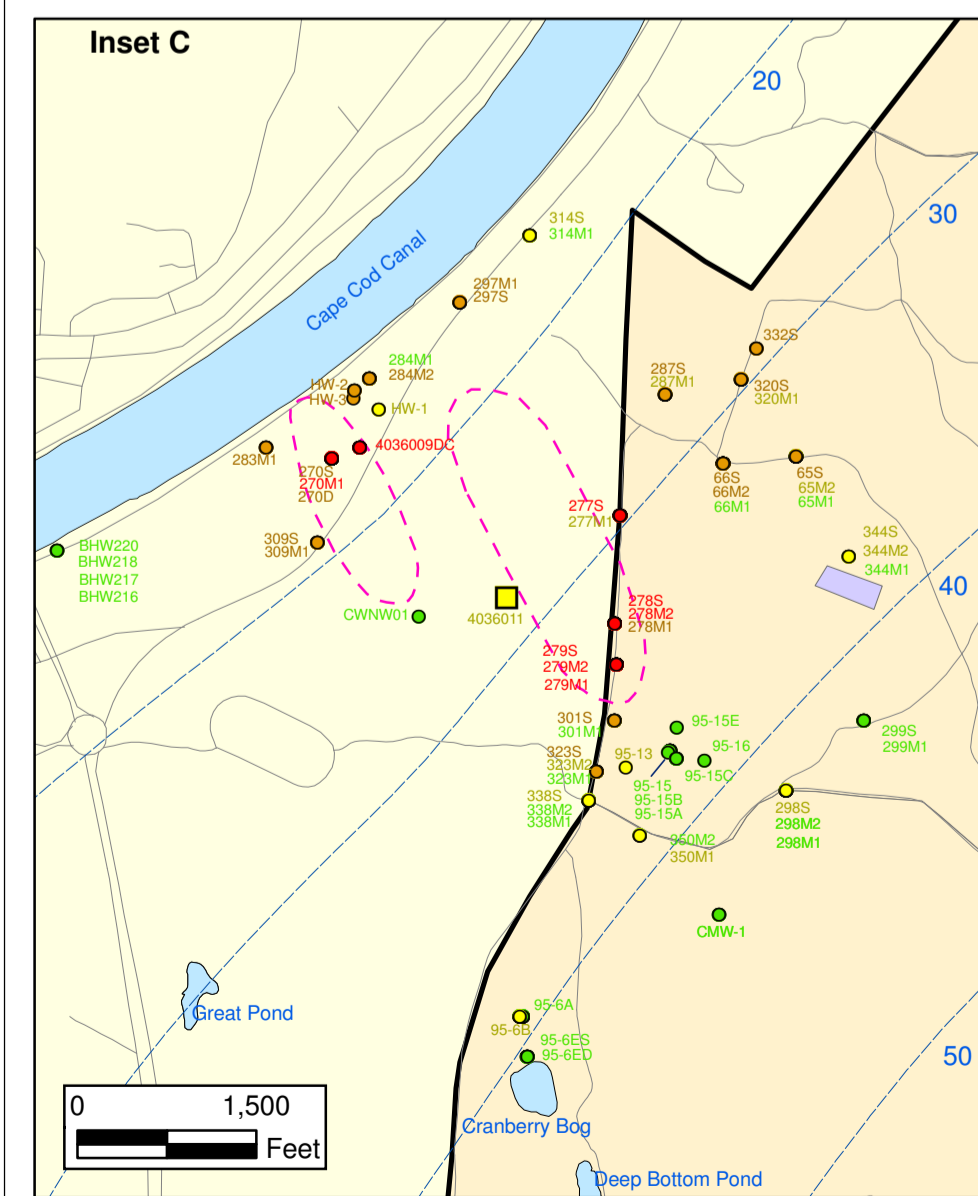
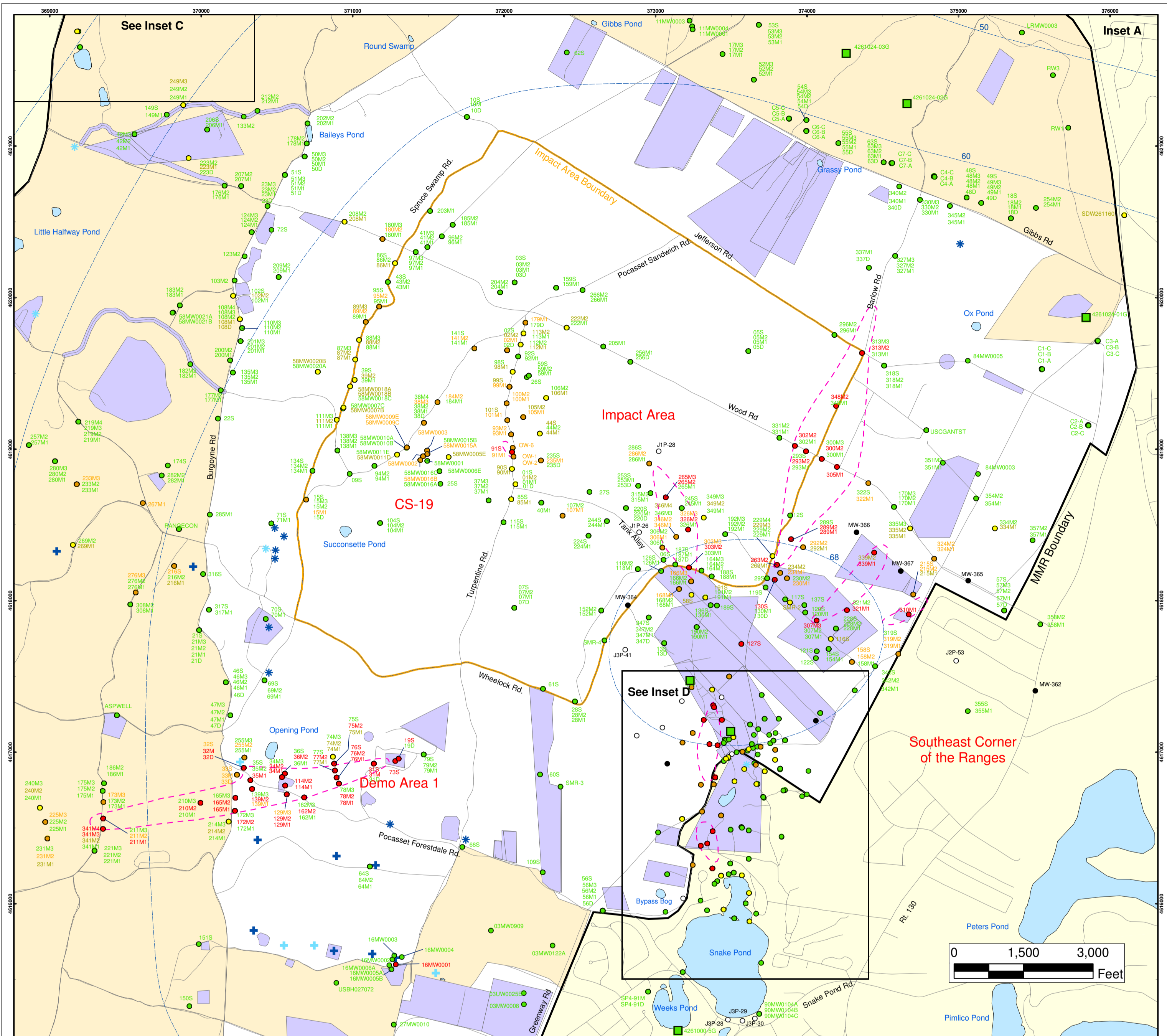


AMEC Earth & Environmental, Inc.  
 Westford, Massachusetts

**Perchlorate in Groundwater  
 Compared to a 4 ppb Concentration  
 Validated Data as of 03/25/05**

FIGURE

8



### Perchlorate in Groundwater Compared to a 4 PPB Concentration Validated Data as of 03/25/05

- Validated Detection Greater than or Equal to 4 ppb
- Validated Detection Greater than or Equal to 1 and Less than 4 ppb
- Validated Detection Less than 1 ppb
- Validated Non-Detect
- No Data Available
- Proposed Monitoring Well
- Military Training Areas
- Military Ranges
- + Current Gun Position
- \* Current Mortar Position
- + Old Gun Position
- \* Old Mortar Position
- Validated Non-Detect Water Supply Well
- Validated Detection Less Than 1 ppb Water Supply Well
- Water Table Contour (Feet NGVD), AMEC, September 2003
- Perchlorate Detection Areas Greater than 4ppb\*

\*Southeast Ranges 10/21/04; Central Impact Area 7/15/03; Demo 1 11/17/04; NorthWest Corner 2/18/05

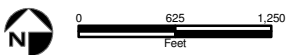
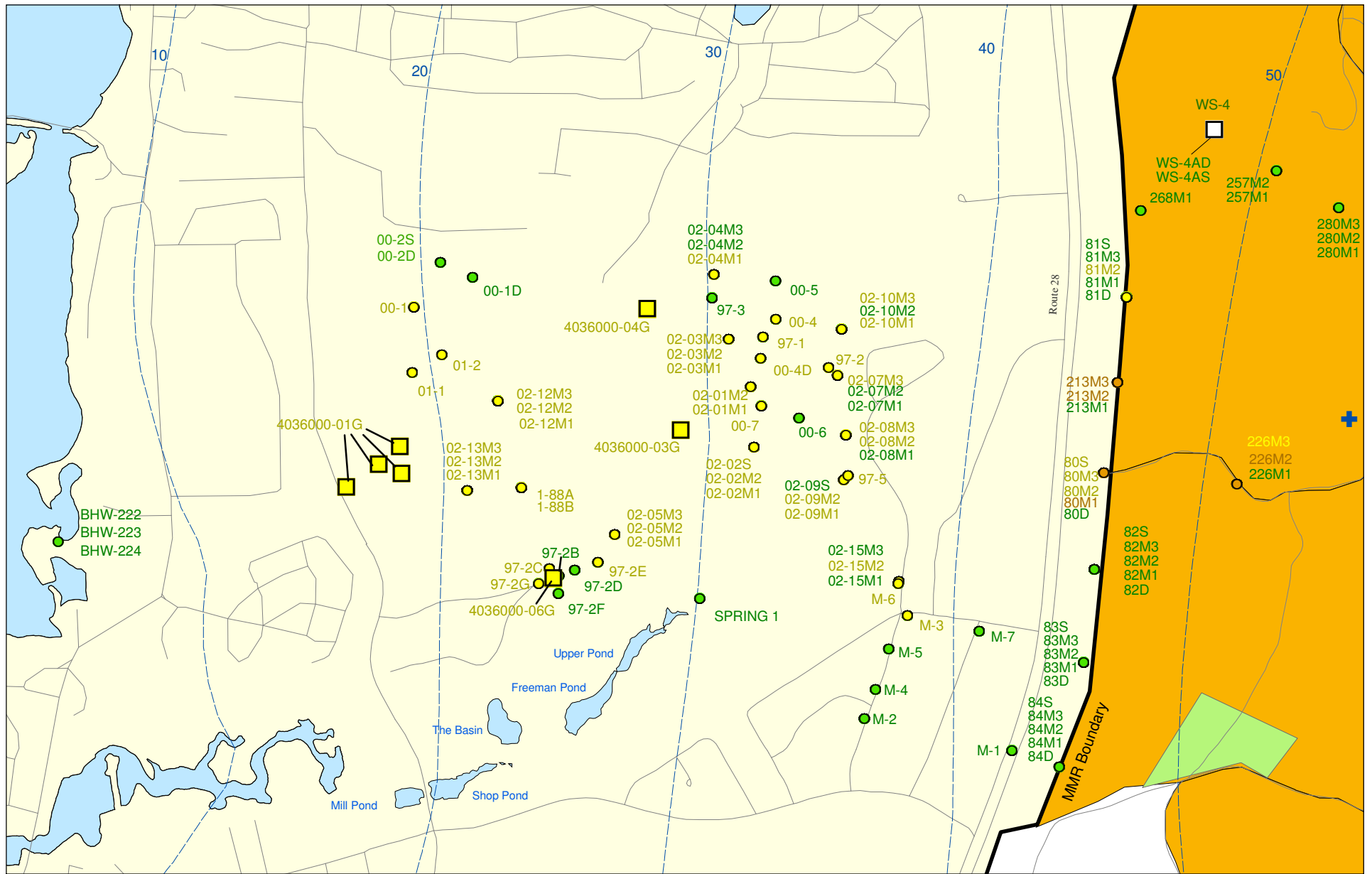
**Impact Area  
Groundwater Study Program**

AMEC Earth & Environmental, Inc.  
Westford, Massachusetts

Sources & Notes  
Base map data from US Geological Survey  
7 1/2 minute Topographic Maps  
Source: Office of Geographic and  
Environmental Information (MassGIS)  
Commonwealth of Massachusetts  
Executive Office of Environmental Affairs

**FIGURE**  
**8**

**Inset Map**



Sources & Notes:  
 Base map data from US Geological Survey  
 7 1/2 minute Topographic maps.  
 Source: Office of Geographic and  
 Environmental Information (MassGIS)  
 Commonwealth of Massachusetts  
 Executive Office of Environmental Affairs

- Validated Detection Greater than or Equal to 1 and Less than 4 ppb
- Validated Detection Greater than Non-Detect and Less than 1 ppb
- Validated Non-Detect
- ⊕ Current Gun Position

- Validated Detection Less than 1 ppb Water Supply Well
- Proposed Water Supply Well
- Combat Training Areas
- Military Training Areas
- - - Water Table Contour (Feet NGVD)  
 AMEC, September 2003

**Perchlorate in Groundwater  
 Compared to a 4 ppb Concentration  
 Validated Data as of 03/25/05**



AMEC Earth & Environmental, Inc.  
 Westford, Massachusetts