
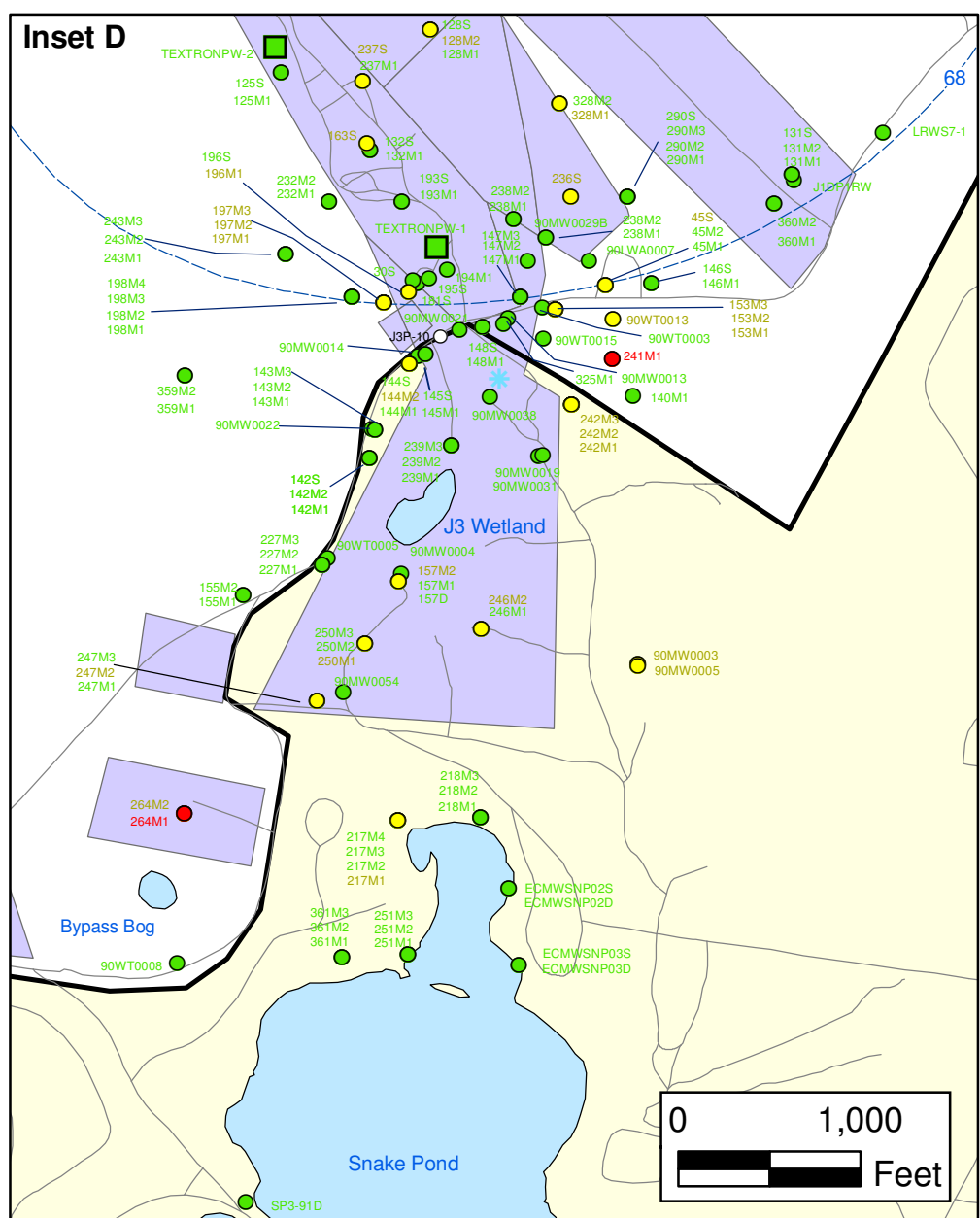
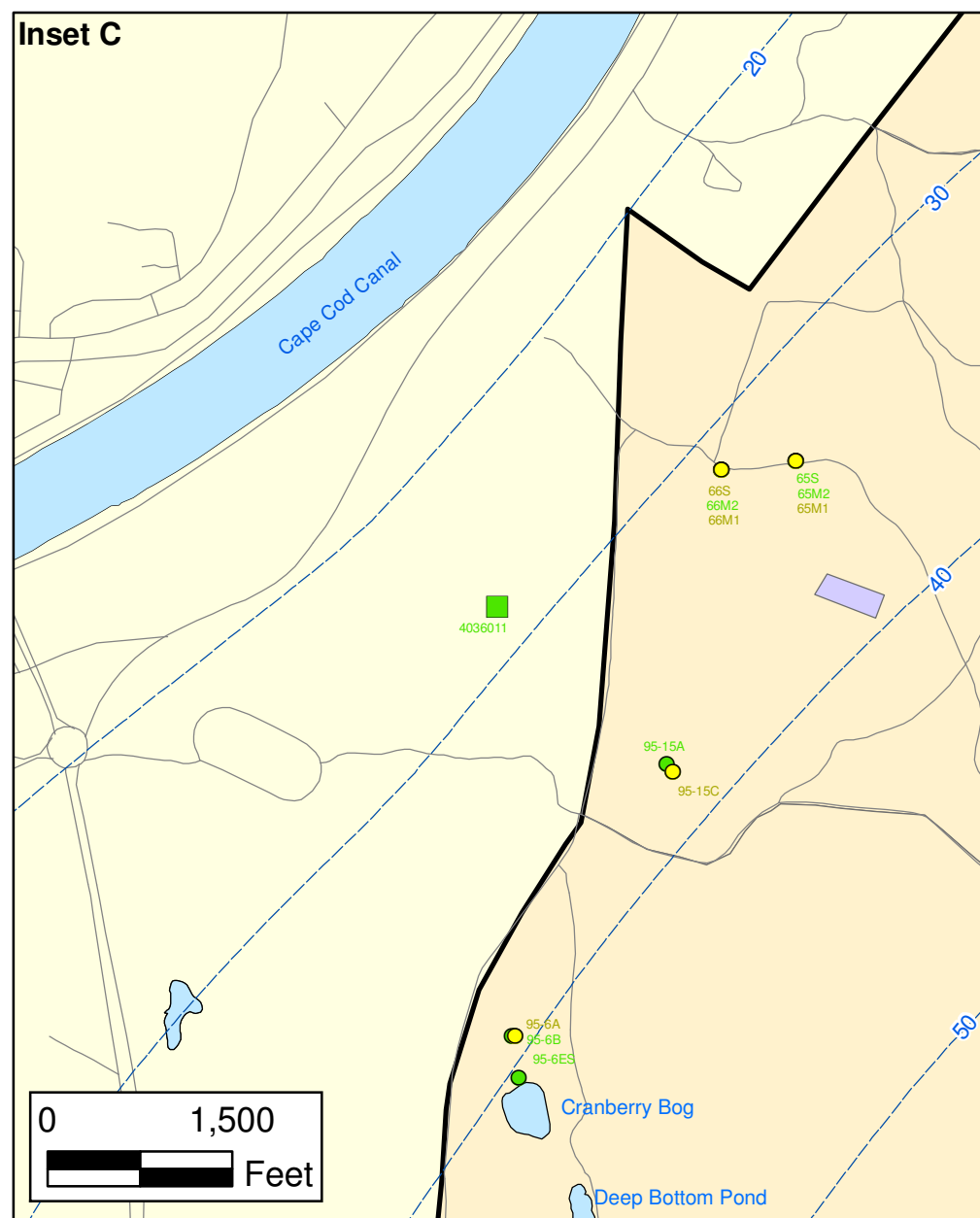
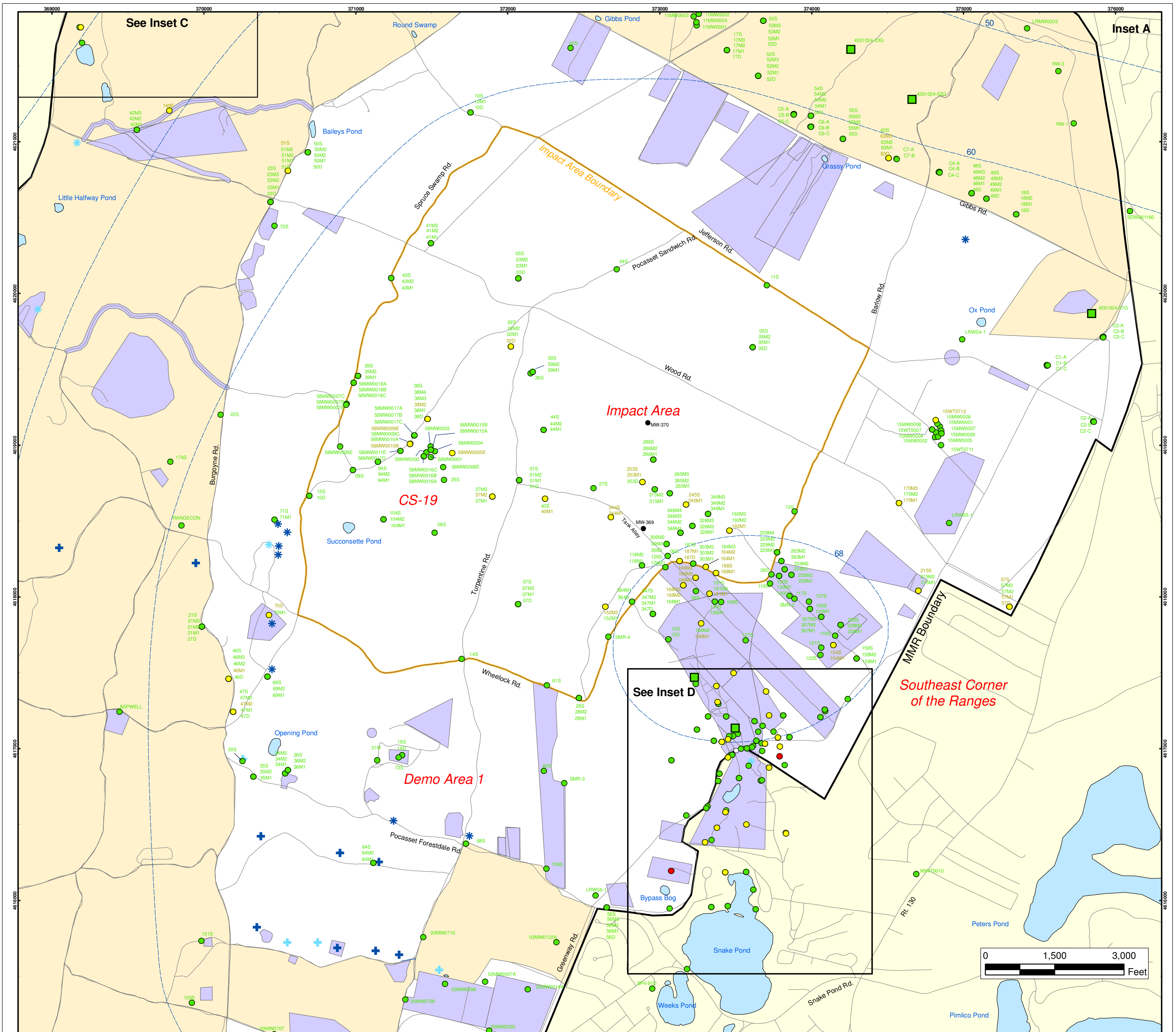


● Validated Detection Greater than or Equal to Maximum Contaminant Level/Health Advisories	⊕ Current Gun Position	■ Validated Non-Detect Water Supply Well
● Validated Detection Less than Maximum Contaminant Level/Health Advisories	⊛ Current Mortar Position	□ Proposed Water Supply Well
● Validated Non-Detect	⊕ Old Gun Position	--- Water Table Contour (Feet NGVD) AMEC, September 2003
● No Data Available	⊛ Old Mortar Position	
○ Proposed Monitoring Well	■ Combat Training Areas	
	■ Military Training Areas	
	■ Military Ranges	

  
 0 2,000 4,000  
 Feet  
 Sources & Notes  
 Base map data from US Geological Survey  
 7 1/2 minute Topographic Maps.  
 Source: Office of Geographic and  
 Environmental Information (MassGIS)  
 Commonwealth of Massachusetts  
 Executive Office of Environmental Affairs

**Semi-Volatile Organic Compounds (Excluding BEHP) in Groundwater  
 Compared to Maximum Contaminant Level/Health Advisories  
 Validated Data as of 06/24/05**

**FIGURE  
 5**



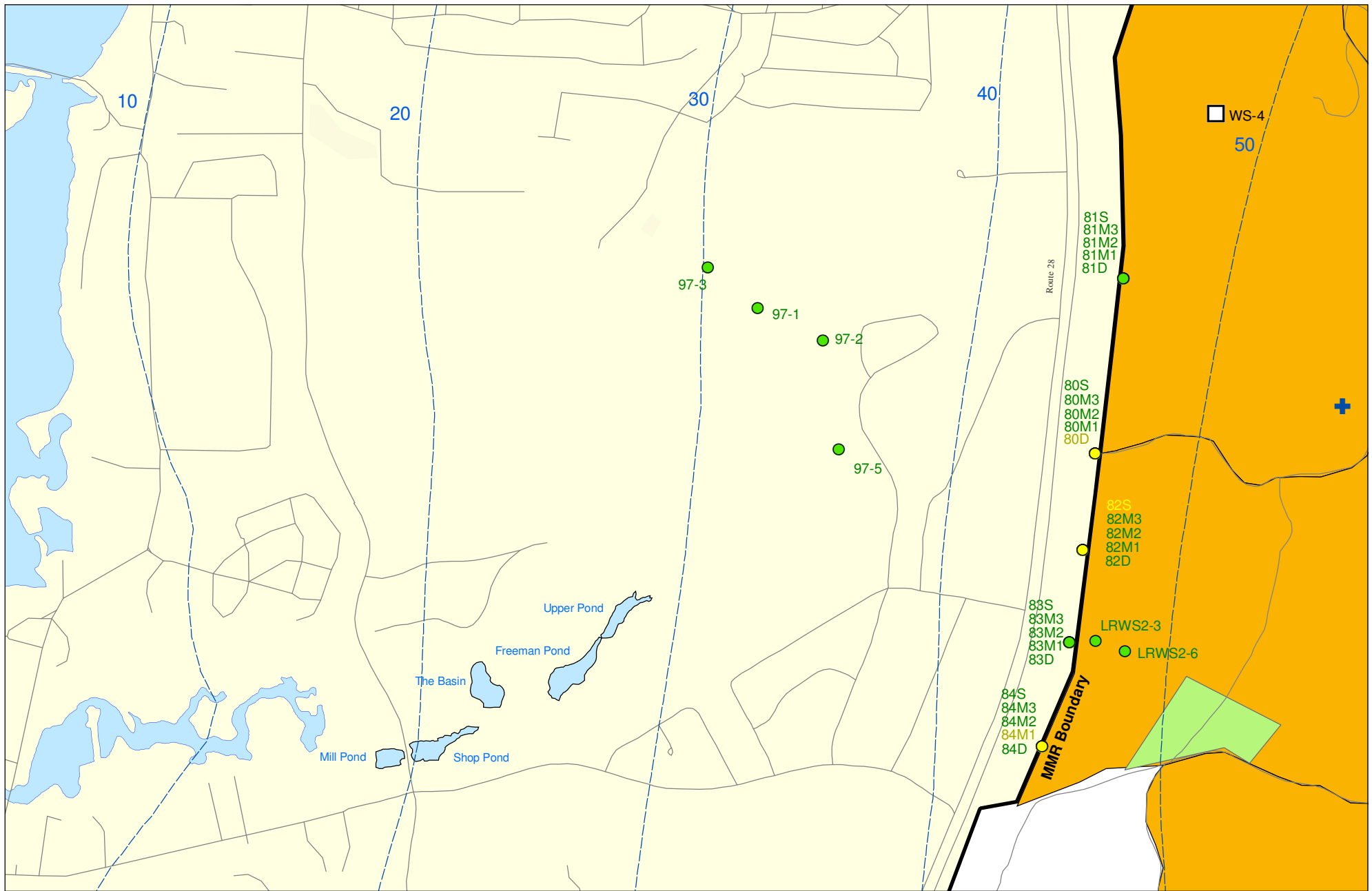
### Semi-Volatile Organic Compounds (Excluding BEHP) in Groundwater Compared to Maximum Contaminant Level/Health Advisories Validated Data as of 06/24/05


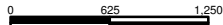
- Validated Detection Greater than or Equal to Maximum Contaminant Level/Health Advisories
- Validated Detection Less than Maximum Contaminant Level/Health Advisories
- Validated Non-Detect
- No Data Available
- Proposed Monitoring Well
- Military Training Areas
- Military Ranges
- ⊕ Current Gun Position
- ⊕ Current Mortar Position
- ⊕ Old Gun Position
- ⊕ Old Mortar Position
- Validated Non-Detect Water Supply Well
- Water Table Contour (Feet NGVD), AMEC, September 2003

**Impact Area Groundwater Study Program**

AMEC Earth & Environmental, Inc.  
Westford, Massachusetts








**FIGURE 5**  
**Inset Map**



**Sources & Notes:**  
 Base map data from US Geological Survey  
 7 1/2 minute Topographic maps.  
 Source: Office of Geographic and  
 Environmental Information (MassGIS)  
 Commonwealth of Massachusetts  
 Executive Office of Environmental Affairs

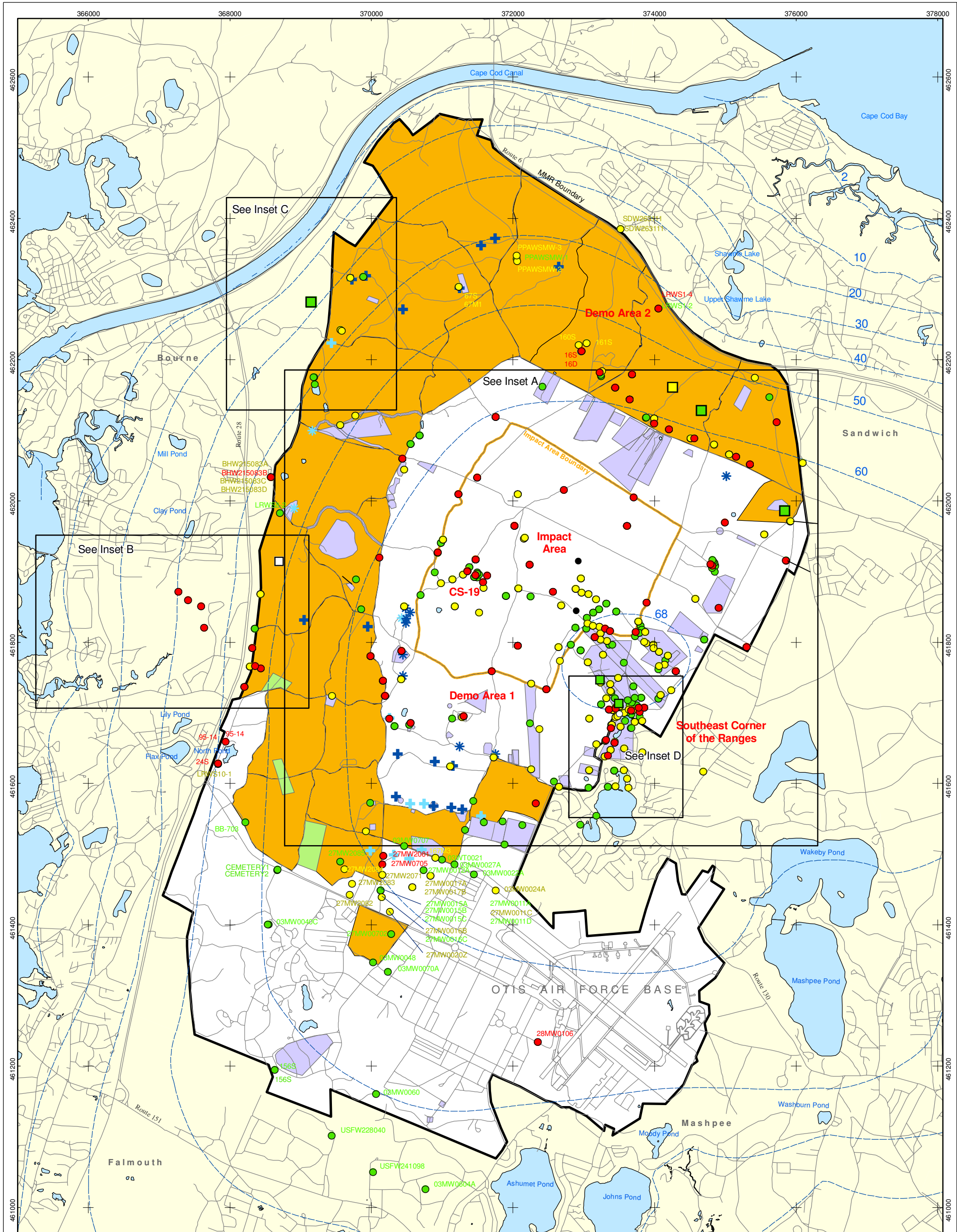
AMEC Earth & Environmental, Inc.  
 Westford, Massachusetts

-  Validated Detection Less than Maximum Contaminant Level/Health Advisories
-  Validated Non-Detect
-  Current Gun Position
-  Proposed Water Supply Well
-  Combat Training Areas
-  Military Training Areas
-  Water Table Contour (Feet NGVD), AMEC, September 2003

**Semi-Volatile Organic Compounds (Excluding BEHP) in Groundwater  
 Compared to Maximum Contaminant Level/Health Advisories  
 Validated Data as of 06/24/05**


**Impact Area  
 Groundwater Study Program**

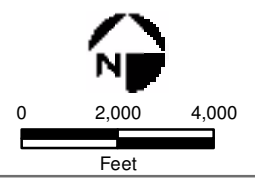
**Inset Map B** FIGURE 5



- Validated Detection Greater than or Equal to Maximum Contaminant Level/Health Advisories
- Validated Detection Less than Maximum Contaminant Level/Health Advisories
- Validated Non-Detect
- No Data Available
- Proposed Monitoring Well

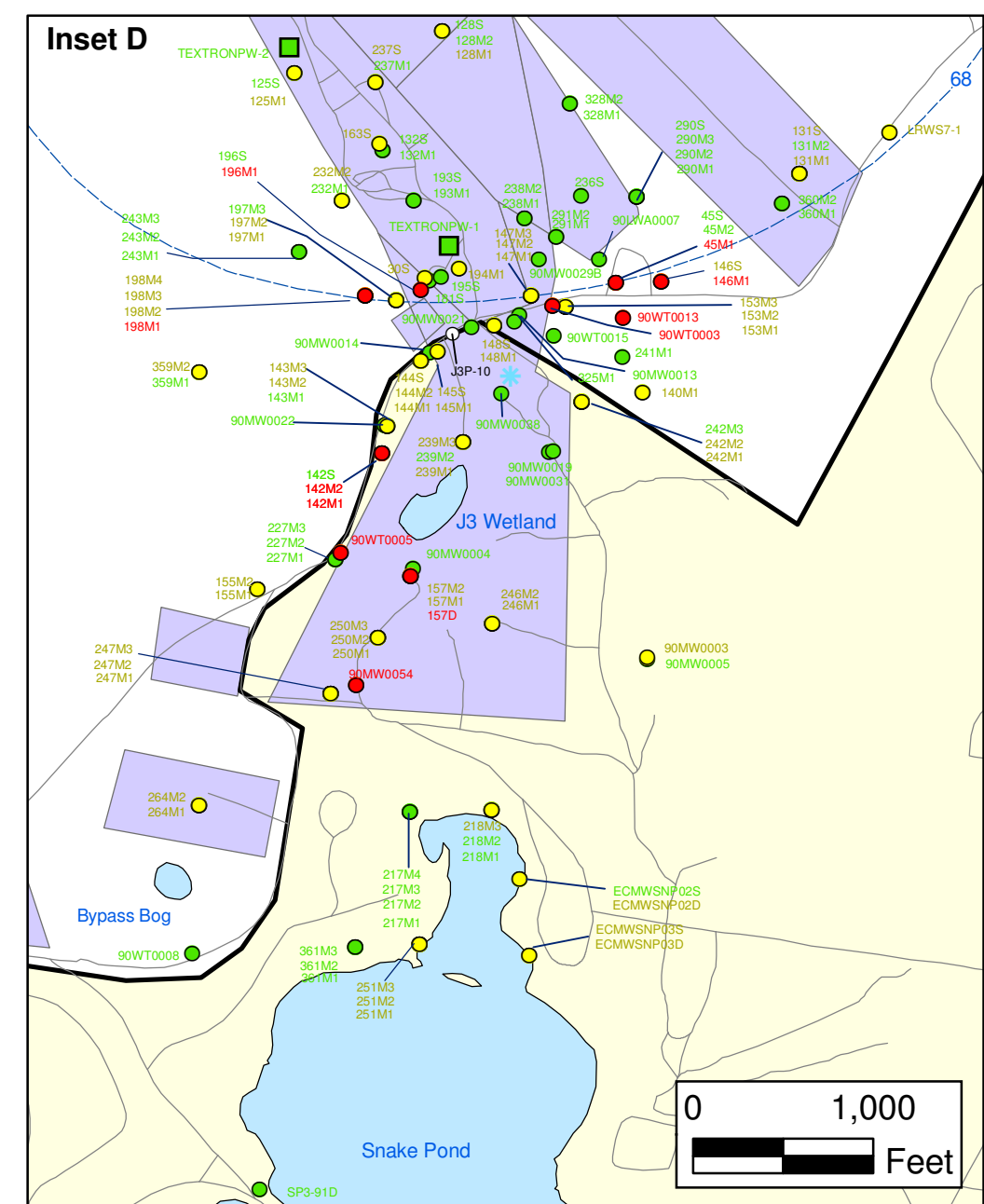
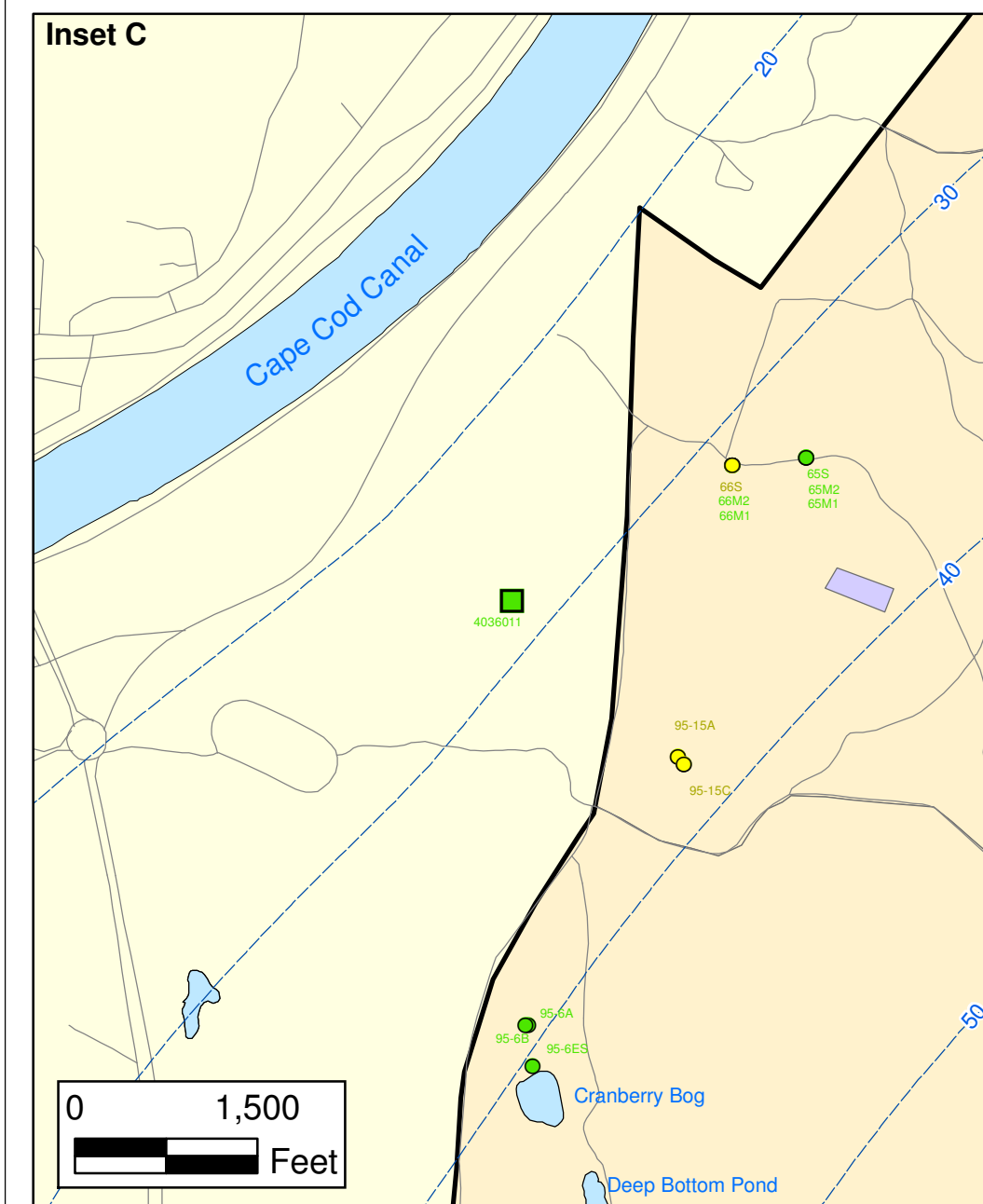
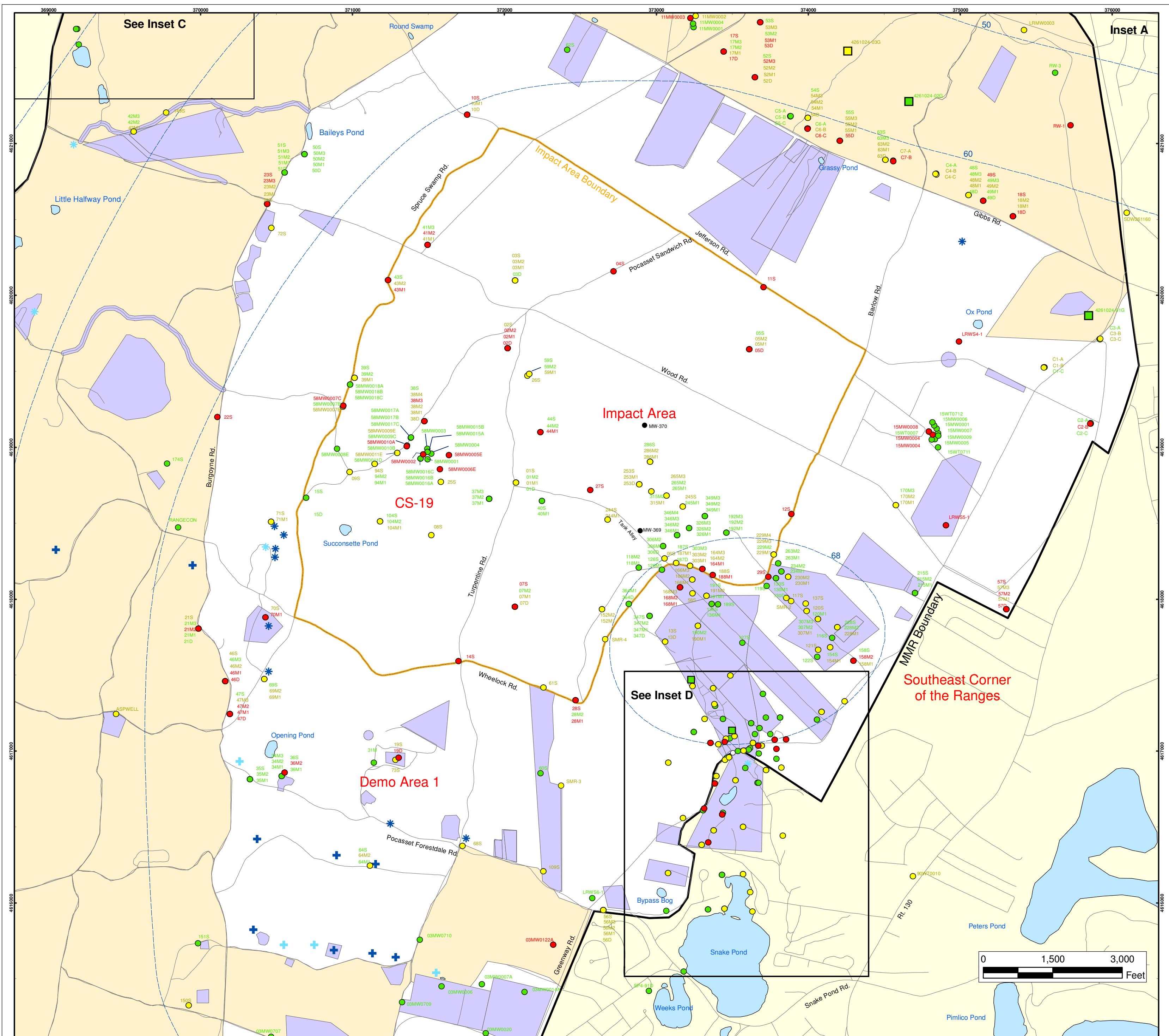
- + Current Gun Position
- \* Current Mortar Position
- + Old Gun Position
- \* Old Mortar Position
- Combat Training Areas
- Military Training Areas
- Military Ranges

- Validated Non-Detect Water Supply Well
- Maximum Contaminant Level/Health Advisories Water Supply Well
- Proposed Water Supply Well
- Water Table Contour (Feet NGVD) AMEC, September 2003



Sources & Notes  
 Base map data from US Geological Survey 7 1/2 minute Topographic Maps.  
 Source: Office of Geographic and Environmental Information (MassGIS) Commonwealth of Massachusetts Executive Office of Environmental Affairs

**BEHP in Groundwater  
 Compared to a 4 ppb Concentration  
 Validated Data as of 06/24/05**



### BEHP in Groundwater Compared to Maximum Contaminant Level/Health Advisories Validated Data as of 06/24/05

- Validated Detection Greater than or Equal to Maximum Contaminant Level/Health Advisories
- Validated Detection Less than Maximum Contaminant Level/Health Advisories
- Validated Non-Detect
- No Data Available
- Proposed Monitoring Well
- Military Training Areas
- Military Ranges
- + Current Gun Position
- \* Current Mortar Position
- + Old Gun Position
- \* Old Mortar Position
- Validated Non-Detect Water Supply Well
- Water Table Contour (Feet NGVD), AMEC, September 2003

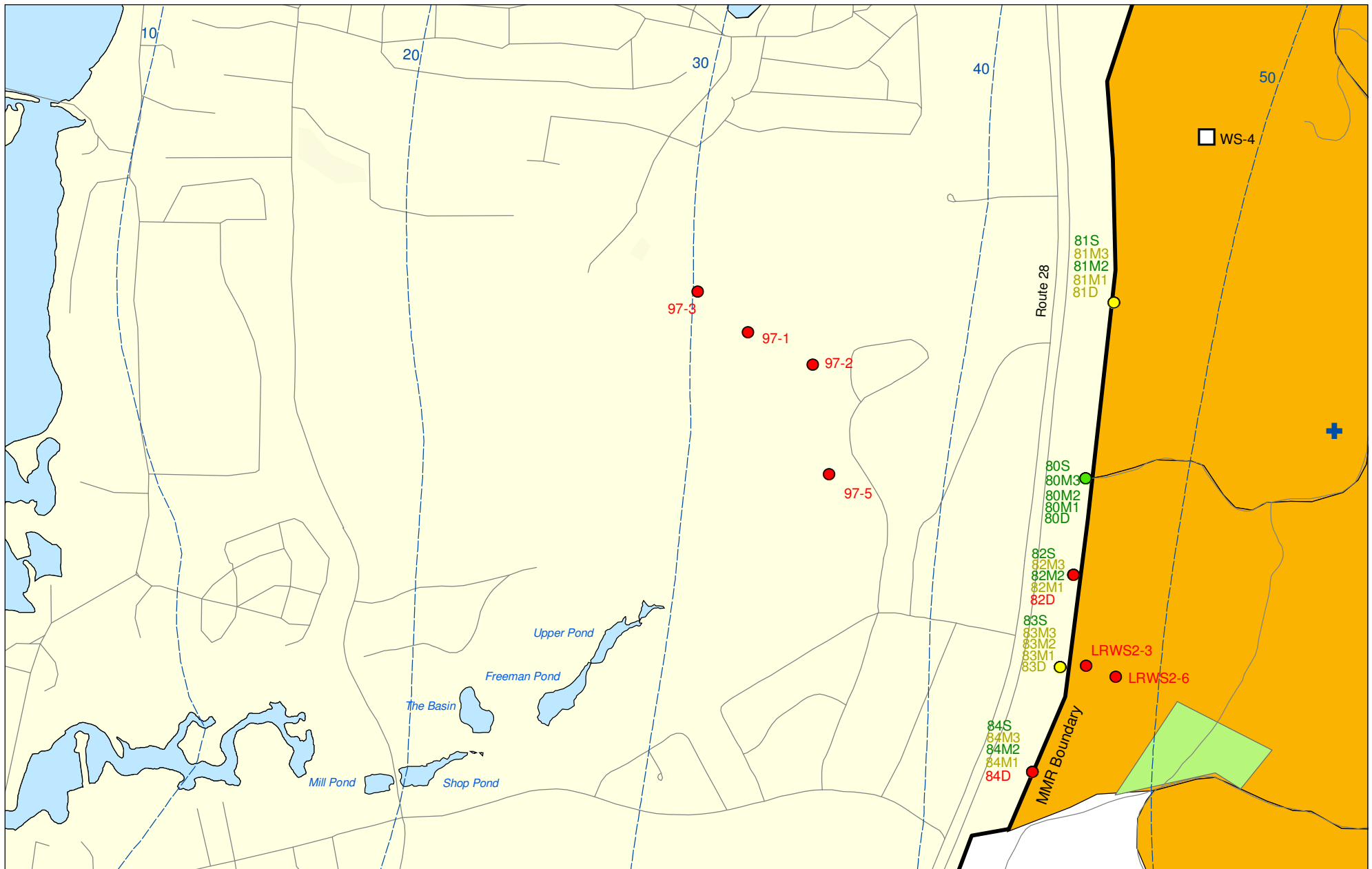
**Impact Area Groundwater Study Program**


AMEC Earth & Environmental, Inc.  
Westford, Massachusetts





Sources & Notes  
Base map data from US Geological Survey 7 1/2 minute Topographic Maps.  
Source: Office of Geographic and Environmental Information (MassGIS) Commonwealth of Massachusetts  
Executive Office of Environmental Affairs

**FIGURE 6**

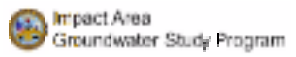
**Inset Map**




  
 0 625 1,250
   
 Feet
   
 Sources & Notes:
   
 Base map data from US Geological Survey
   
 7 1/2 minute Topographic maps.
   
 Source: Office of Geographic and
   
 Environmental Information (MassGIS)
   
 Commonwealth of Massachusetts
   
 Executive Office of Environmental Affairs

- Validated Detection Greater than or Equal to Maximum Contaminant Level/Health Advisories
- Validated Detection Less than Maximum Contaminant Level/Health Advisories
- Validated Non-Detect
- + Current Gun Position
-  Proposed Water Supply Well
-  Combat Training Areas
-  Military Training Areas
-  Water Table Contour (Feet NGVD) AMEC, September 2003

**BEHP in Groundwater Compared to Maximum Contaminant Level/Health Advisories**  
Validated Data as of 06/24/05



AMEC Earth & Environmental, Inc.  
Westford, Massachusetts

FIGURE  
**Inset Map B** **6**