

Volatile Organic Compounds (Excluding Chloroform) in Groundwater Compared to Maximum Contaminant Level/Health Advisories Validated Data as of 06/24/05

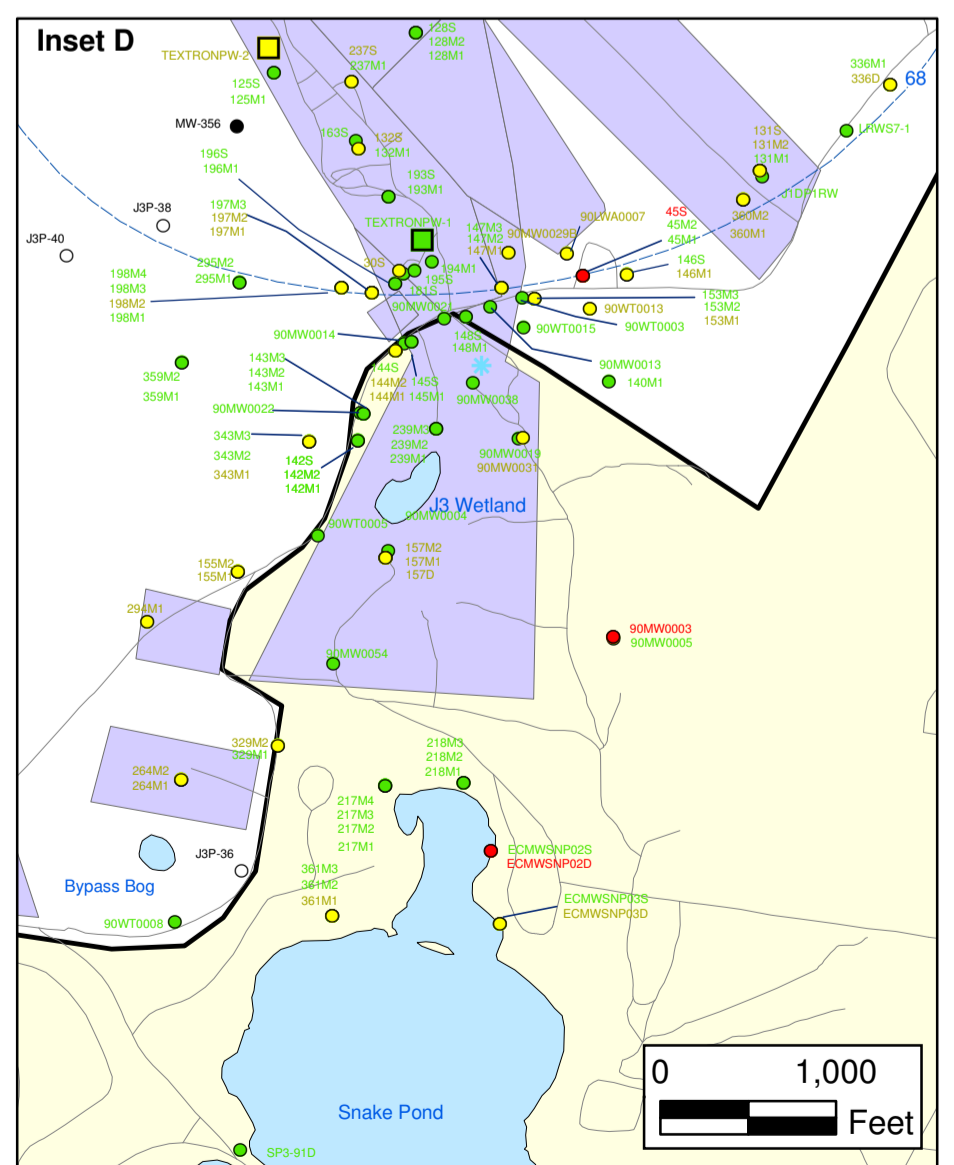
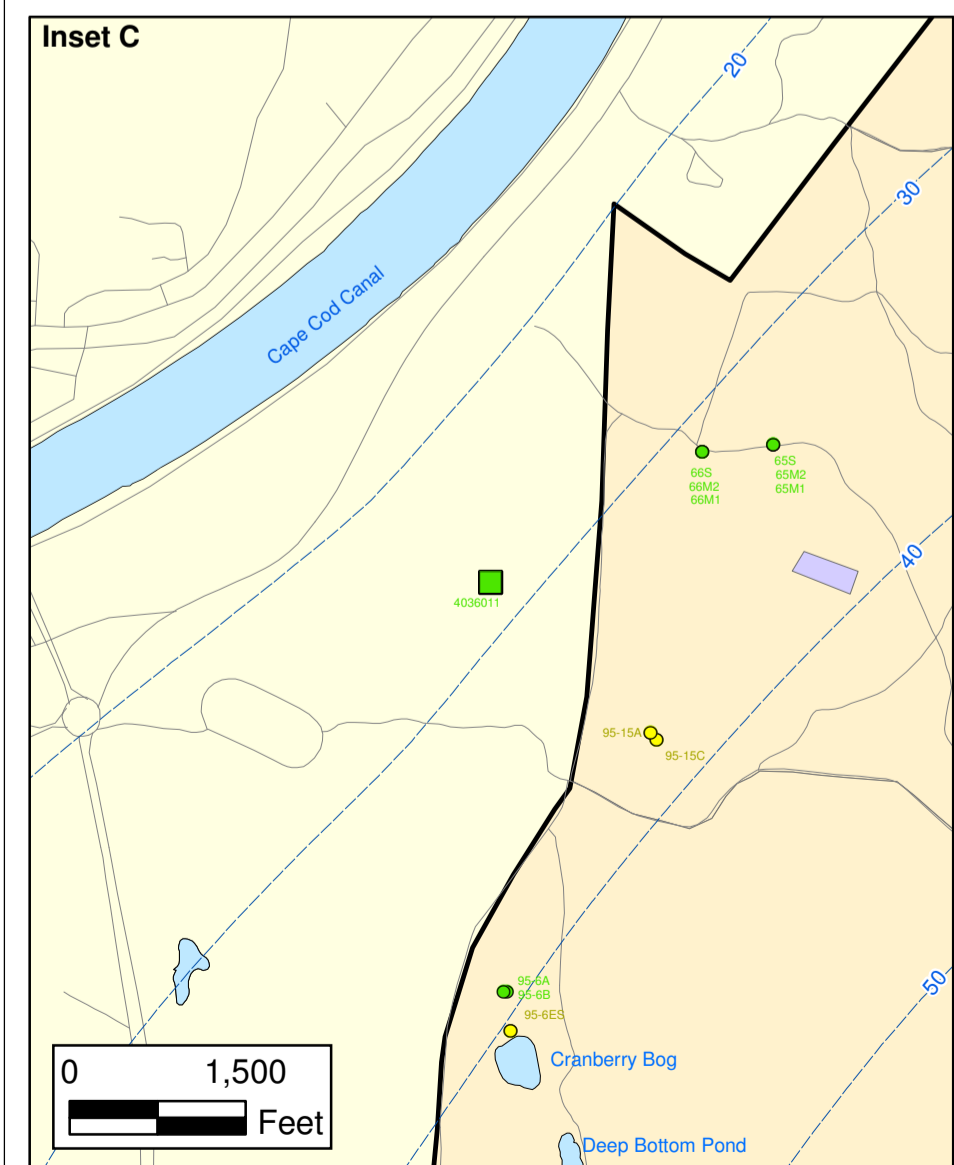
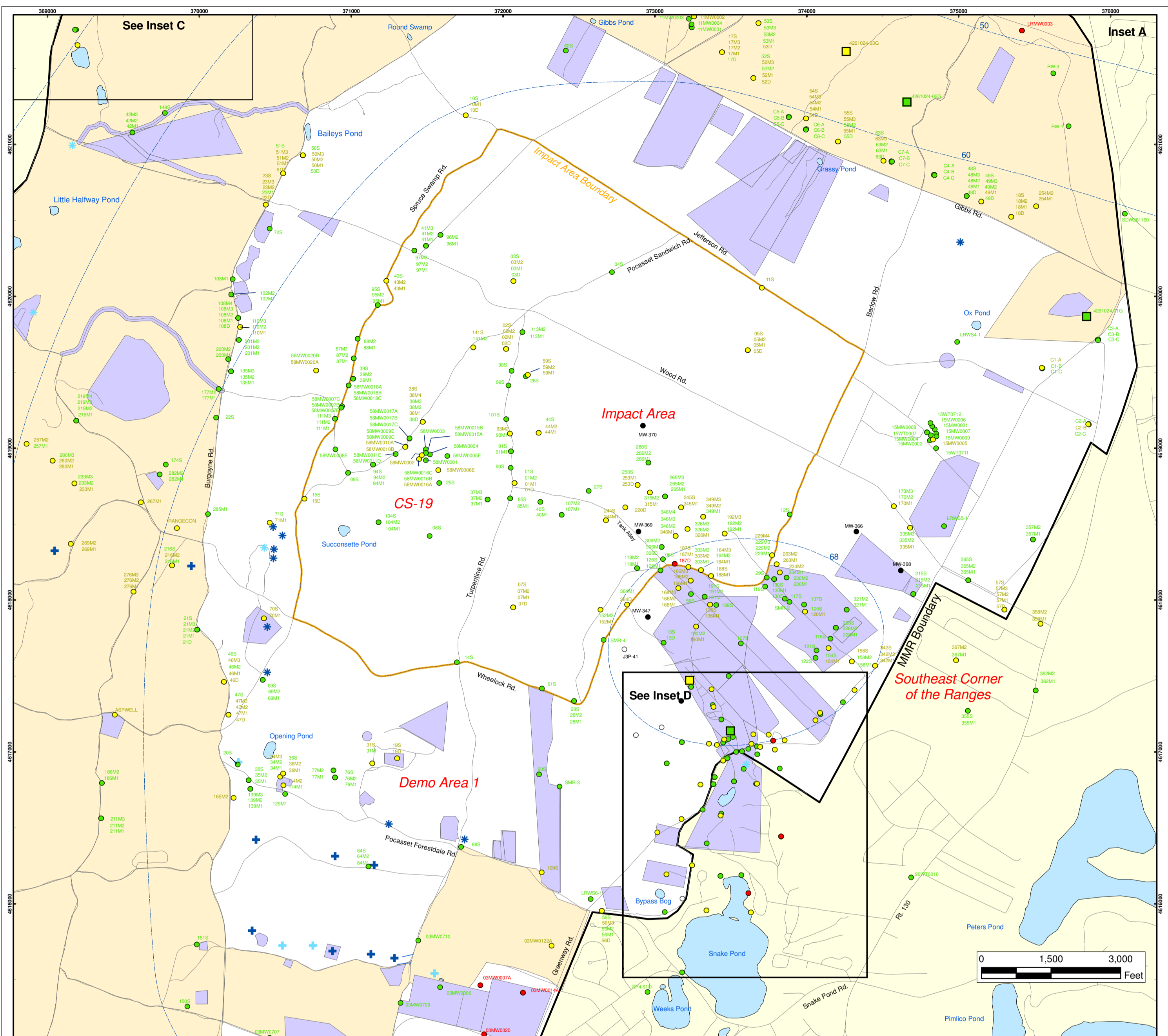
FIGURE 3

AMEC Earth & Environmental, Inc.
 Westford, Massachusetts

J:\GIS\July2005\monthly\VOC_overall.pdf
 G:\MMR_COE\Work2005\Monthly\July2005\3_VOC\VOC_overall.mxd
 July 1, 2005 DWN: DNB ABF CHKD: MD



Impact Area Groundwater Study Program



Volatile Organic Compounds (Excluding Chloroform) in Groundwater Compared to Maximum Contaminant Level/Health Advisories Validated Data as of 06/24/05

- Validated Detection Greater than or Equal to Maximum Contaminant Level/Health Advisories
- Validated Detection Less than Maximum Contaminant Level/Health Advisories
- Validated Non-Detect
- No Data Available
- Proposed Monitoring Well
- Military Training Areas
- Military Ranges
- + Current Gun Position
- * Current Mortar Position
- + Old Gun Position
- * Old Mortar Position
- Validated Non-Detect Water Supply Well
- Validated Detection Less than Maximum Contaminant Level/Health Advisories Water Supply Well
- Water Table Contour (Feet NGVD), AMEC, September 2003

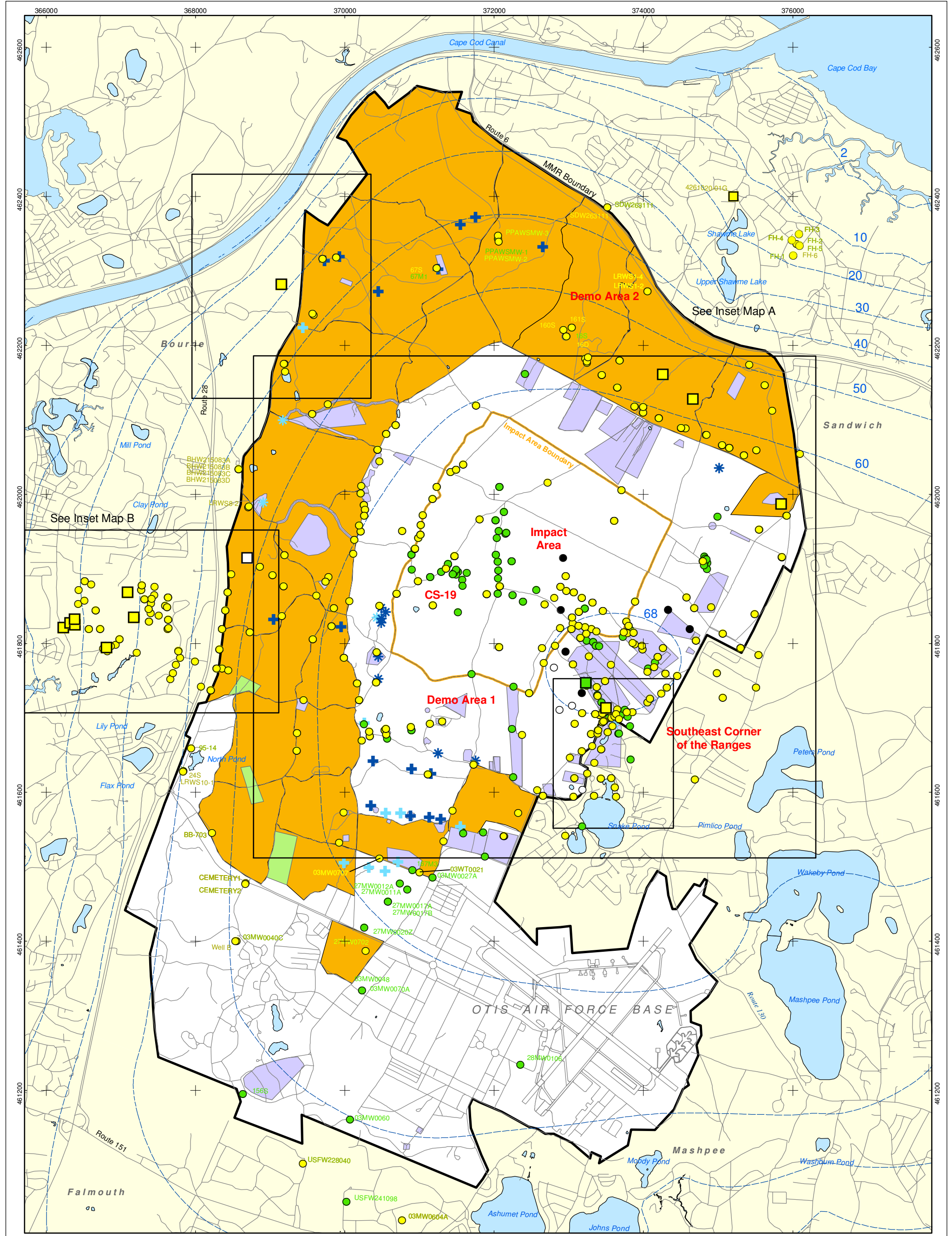
Impact Area Groundwater Study Program

AMEC Earth & Environmental, Inc.
Westford, Massachusetts

Sources & Notes
Base map data from US Geological Survey
7.12 minute Topographic Maps.
Source: Office of Geographic and Environmental Information (MassGIS)
Commonwealth of Massachusetts
Executive Office of Environmental Affairs

FIGURE **3**

Inset Map



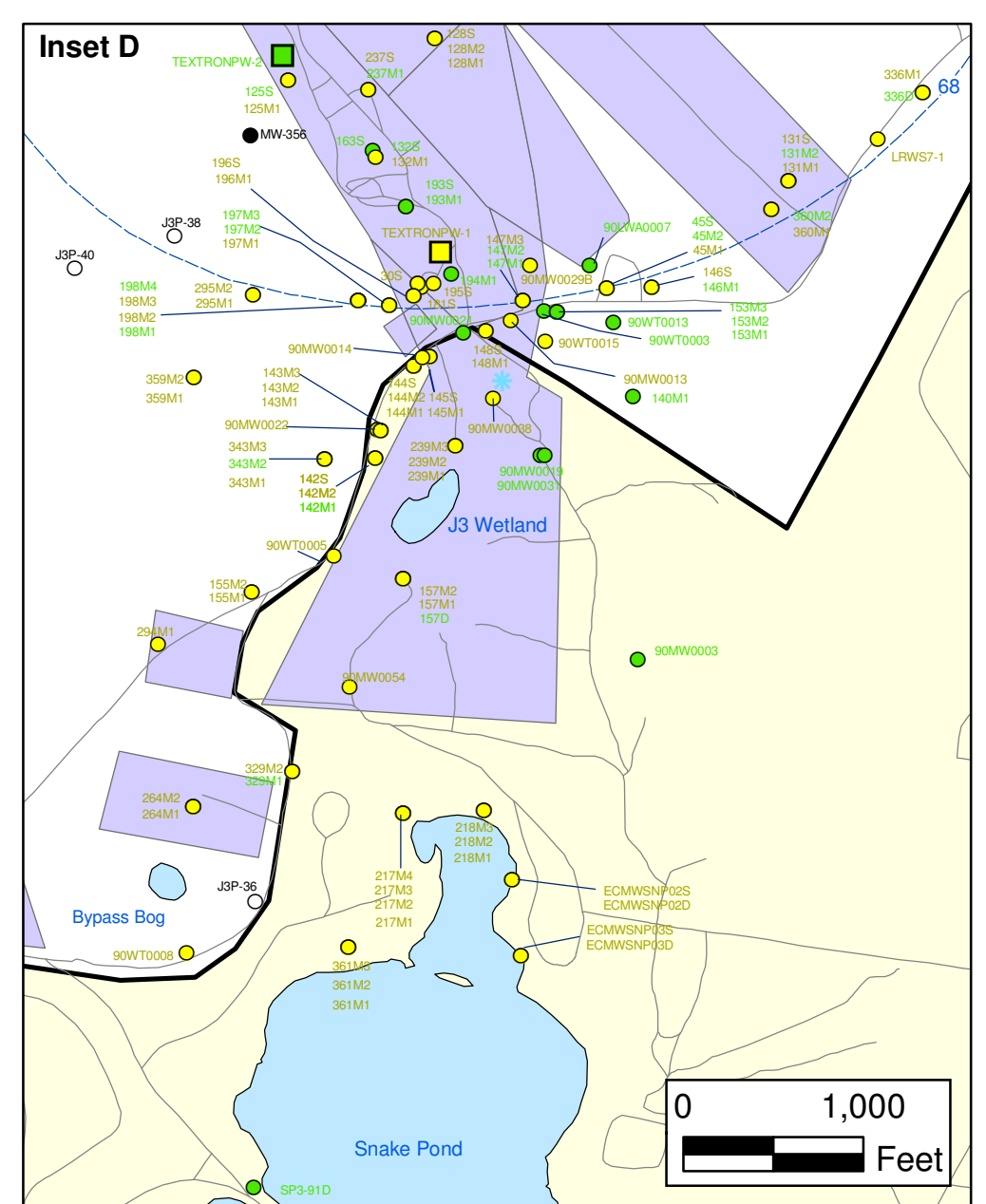
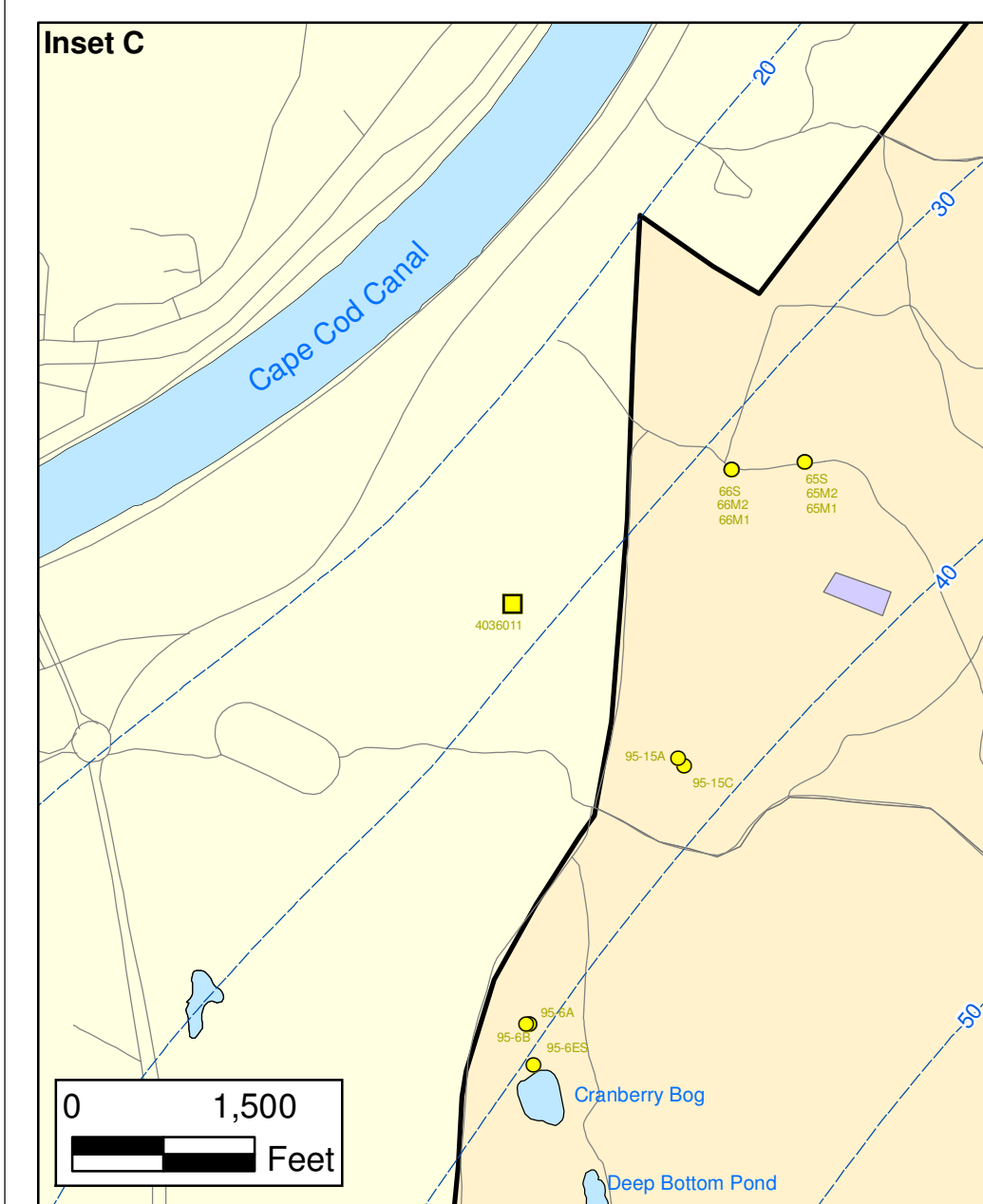
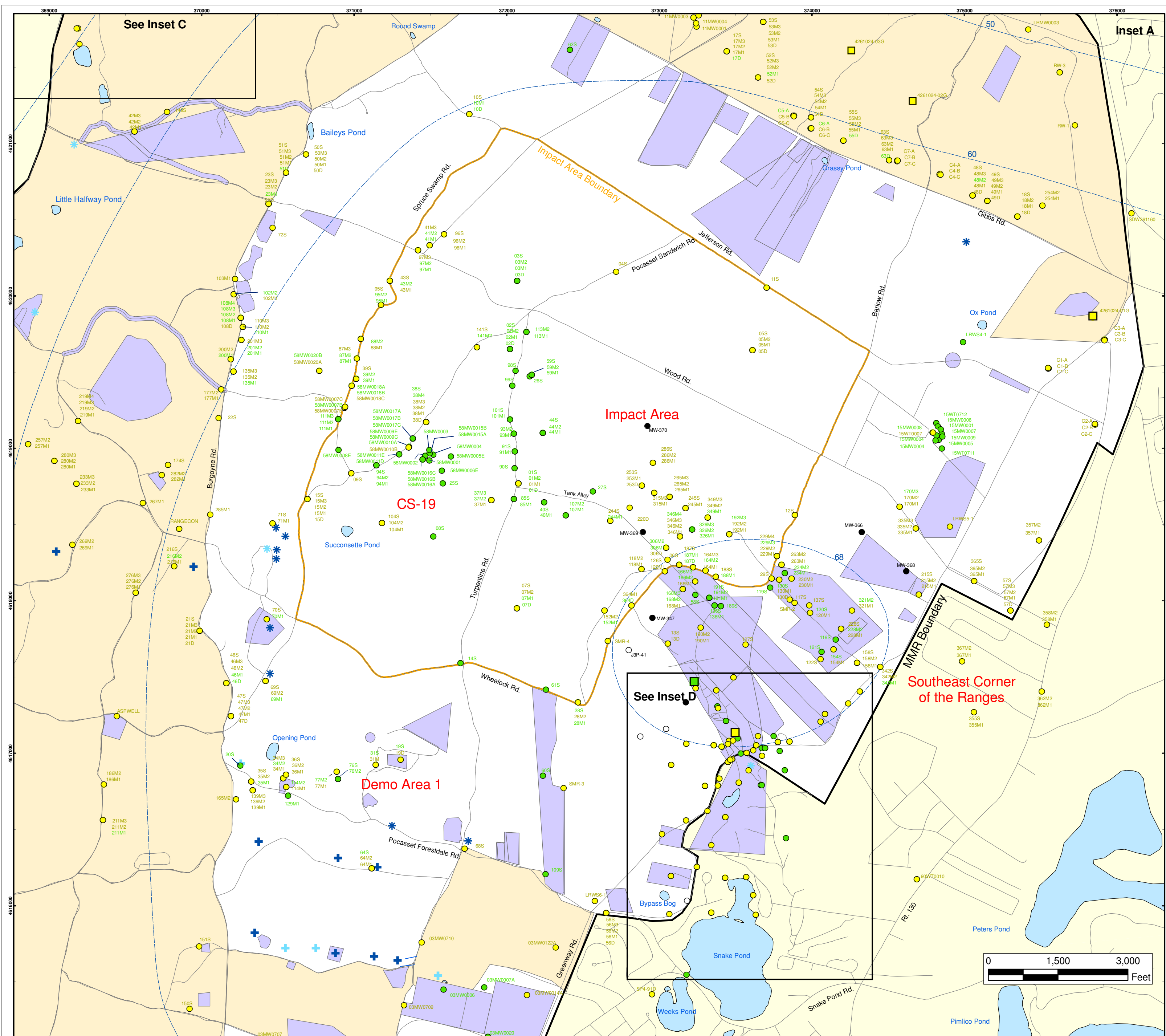
● Validated Detection Greater than or Equal to Maximum Contaminant Level/Health Advisories	⊕ Current Gun Position	■ Validated Non-Detect Water Supply Well
● Validated Detection Less than the Maximum Contaminant Level/Health Advisories	⊕ Old Gun Position	■ Validated Detection Less than the Maximum Contaminant Level/Health Advisories
● Validated Non-Detect	⊕ Old Mortar Position	□ Proposed Water Supply Well
● No Data Available	■ Combat Training Areas	---
○ Proposed Monitoring Well	■ Military Training Areas	---
	■ Military Ranges	---

Water Table Contour (Feet NGVD)
AMEC, September 2003

0 2,000 4,000
Feet

Sources & Notes
Base map data from US Geological Survey
7 1/2 minute Topographic Maps.
Source: Office of Geographic and
Environmental Information (MassGIS)
Commonwealth of Massachusetts
Executive Office of Environmental Affairs

**Chloroform in Groundwater Compared to
Maximum Contaminant Level/Health Advisories
Validated Data as of 06/24/05**



Chloroform in Groundwater Compared to Maximum Contaminant Level/Health Advisories Validated Data as of 06/24/05

- Validated Detection Less than Maximum Contaminant Level/Health Advisories
- Validated Non-Detect
- No Data Available
- Proposed Monitoring Well
- Military Training Areas
- Military Ranges
- + Current Gun Position
- * Current Mortar Position
- + Old Gun Position
- * Old Mortar Position
- Validated Non-Detect Water Supply Well
- Validated Detection Less than Maximum Contaminant Level/Health Advisories Water Supply Well
- Water Table Contour (Feet NGVD), AMEC, September 2003

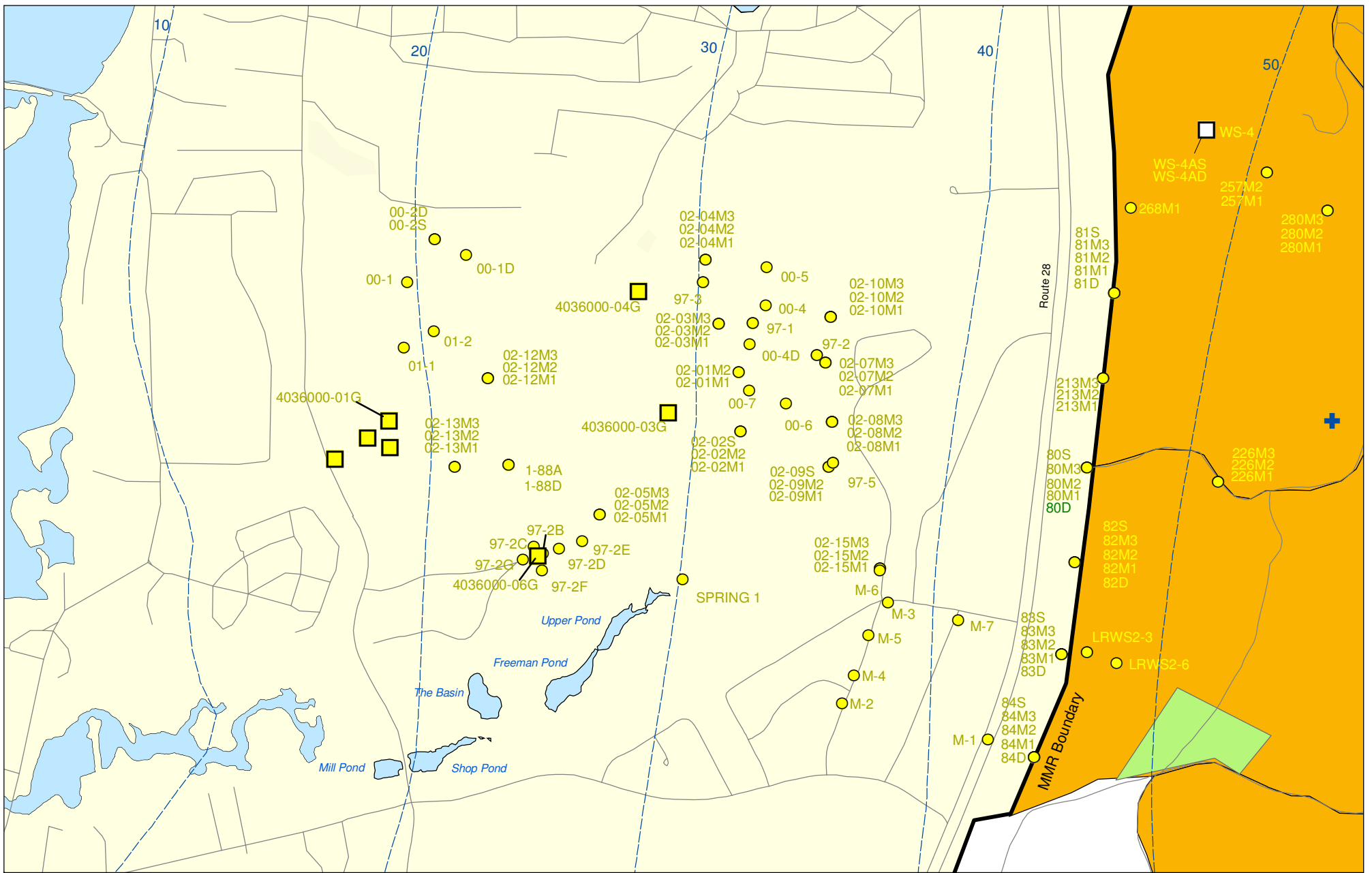
**Impact Area
Groundwater Study Program**

AMEC Earth & Environmental, Inc.
Westford, Massachusetts

Sources & Notes
Base map data from US Geological Survey
7 1/2 minute Topographic Maps
Source: Office of Geographic and
Environmental Information (MassGIS)
Commonwealth of Massachusetts
Executive Office of Environmental Affairs

FIGURE
4

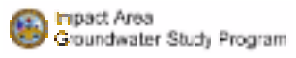
Inset Map



Sources & Notes:
 Base map data from US Geological Survey
 7 1/2 minute Topographic maps.
 Source: Office of Geographic and
 Environmental Information (MassGIS)
 Commonwealth of Massachusetts
 Executive Office of Environmental Affairs

- Validated Detection Less than Maximum Contaminant Level/Health Advisories
- Validated Non-Detect
- + Current Gun Position
- Validated Detection Less than Maximum Contaminant Level/Health Advisories
- Proposed Water Supply Well
- Combat Training Areas
- Military Training Areas
- Water Table Contour (Feet NGVD)

Chloroform in Groundwater Compared to Maximum Contaminant Level/Health Advisories
Validated Data as of 06/24/05



AMEC Earth & Environmental, Inc.
 Westford, Massachusetts

AMEC, September 2003

FIGURE
Inset Map B 4