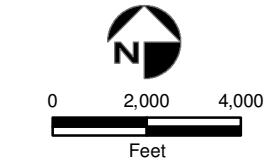


- Validated Detection Greater than or Equal to Maximum Contaminant Level/Health Advisories
- Validated Detection Less than Maximum Contaminant Level/Health Advisories
- Validated Non-Detect
- No Data Available
- Proposed Monitoring Well

- + Current Gun Position
- \* Current Mortar Position
- + Old Gun Position
- \* Old Mortar Position
- Combat Training Areas
- Military Training Areas
- Military Ranges

- Validated Non-Detect Water Supply Well
- Validated Detection Less than Maximum Contaminant Level/Health Advisories Water Supply Well
- Proposed Water Supply Well
- Water Table Contour (Feet NGVD) AMEC, September 2003
- - - Area of RDX Detections Greater than 2.0 ppb



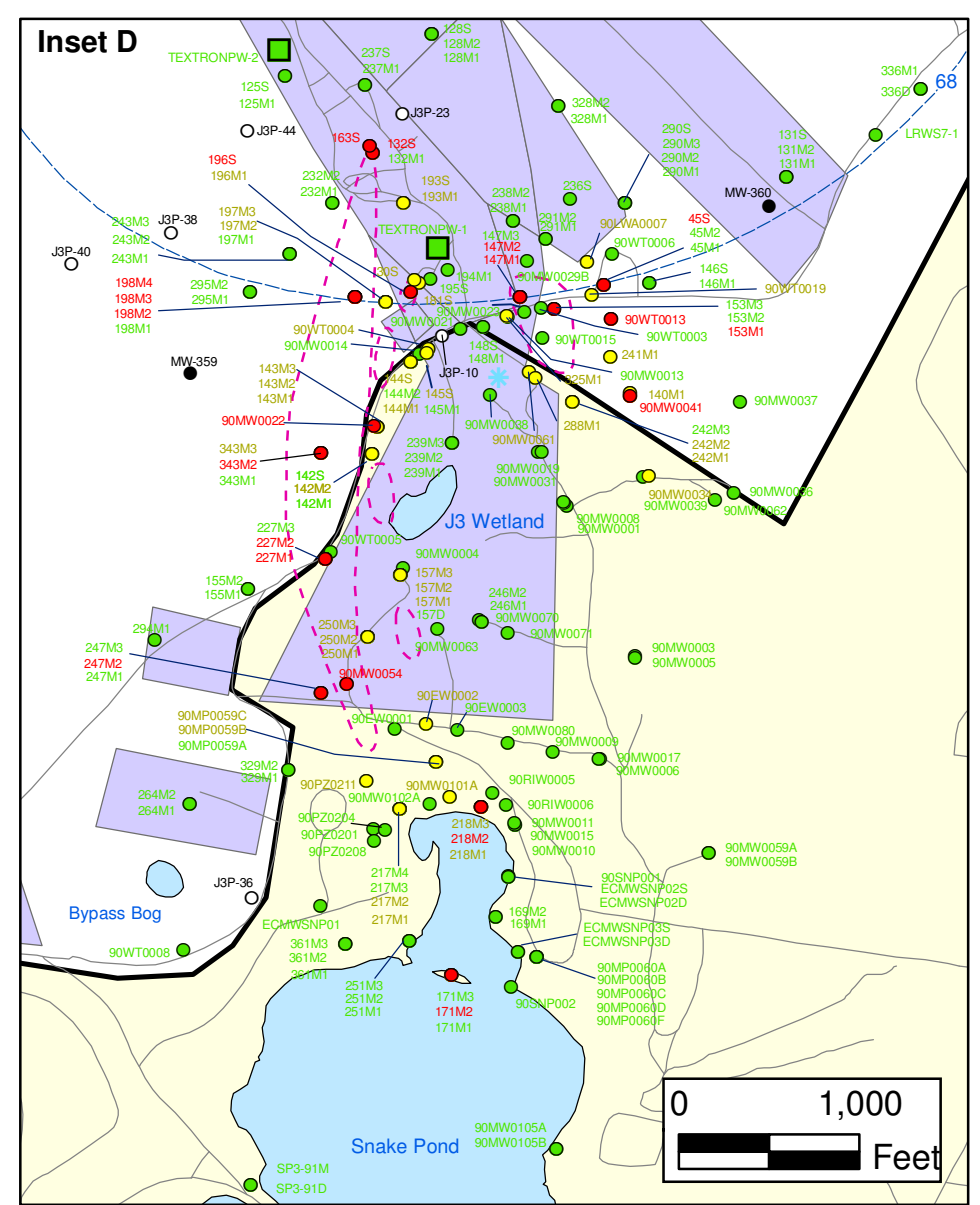
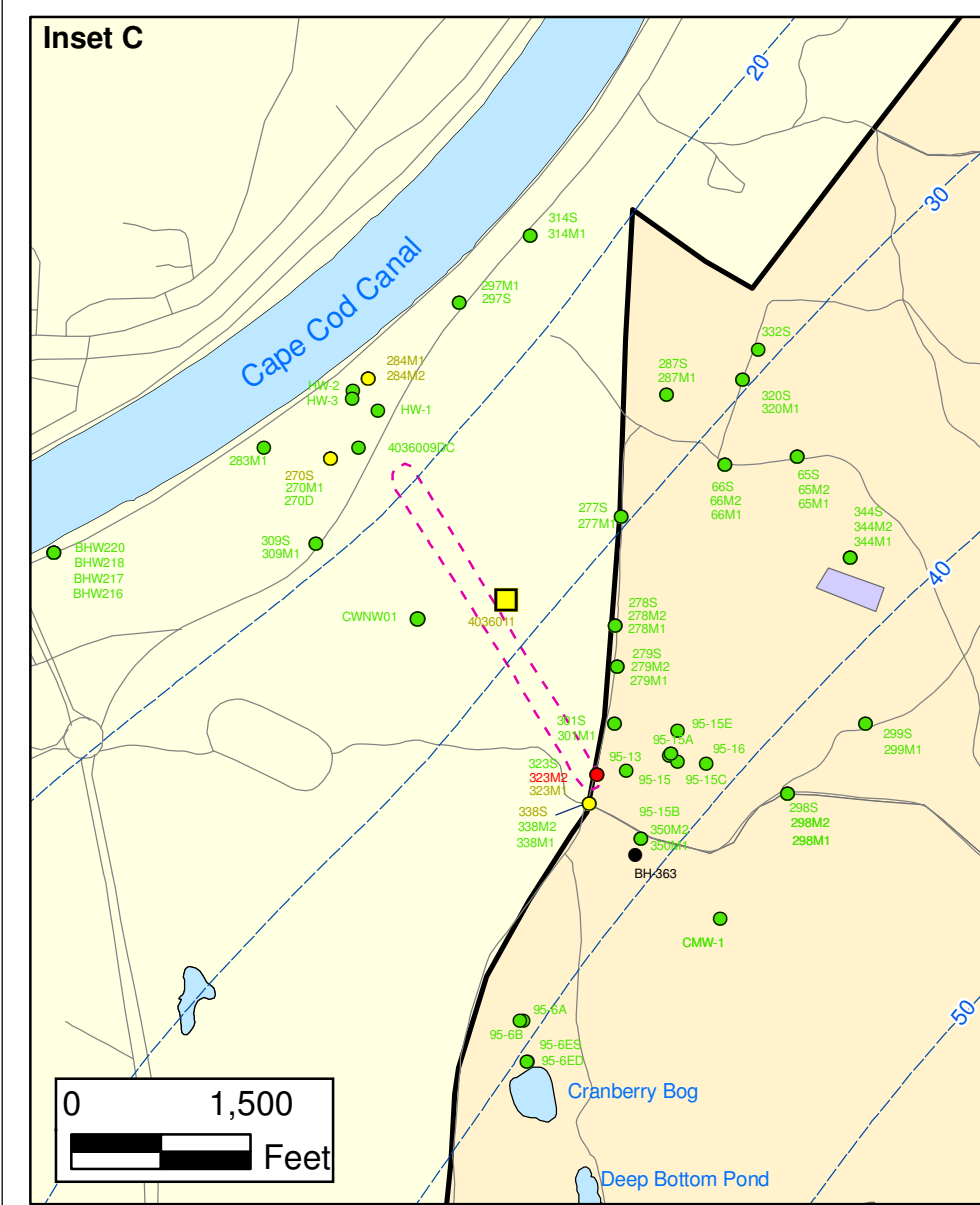
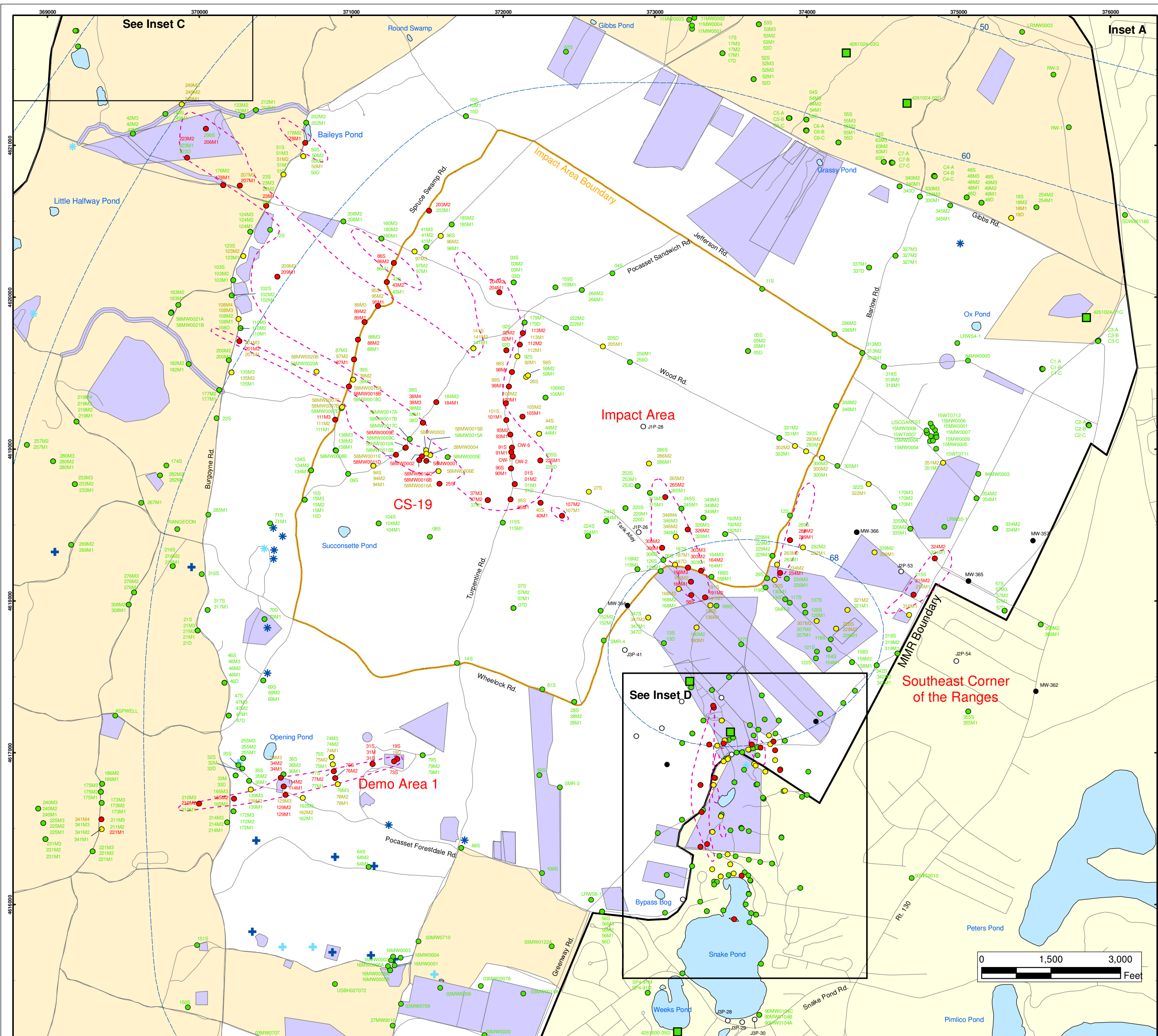
Sources & Notes  
 Base map data from US Geological Survey  
 7 1/2 minute Topographic Maps.  
 Source: Office of Geographic and  
 Environmental Information (MassGIS)  
 Commonwealth of Massachusetts  
 Executive Office of Environmental Affairs

**DRAFT**

AMEC Earth & Environmental, Inc.  
 Westford, Massachusetts

**Explosives in Groundwater Compared to  
 Maximum Contaminant Level/Health Advisories  
 Validated Data as of 02/25/05**

**FIGURE  
 1**



### Explosives in Groundwater Compared to Maximum Contaminant Level/Health Advisories

Validated Data as of 02/25/05

- Validated Detection Greater than or Equal to Maximum Contaminant Level/Health Advisories
- Validated Detection Less than Maximum Contaminant Level/Health Advisories
- Validated Non-Detect
- No Data Available
- Proposed Monitoring Well
- Military Training Areas
- Military Ranges
- Current Gun Position
- Current Mortar Position
- Old Gun Position
- Old Mortar Position
- Validated Non-Detect Water Supply Well
- Validated Detection Less than Maximum Contaminant Level/Health Advisories Water Supply Well
- Water Table Contour (Feet NGVD), AMEC, September 2003
- Area of RDX Detections Greater than 2.0 ppb  
Central Impact Area 7/15/03  
SE Ranges (Jacobs Eng.) 10/21/04

**Impact Area Groundwater Study Program**

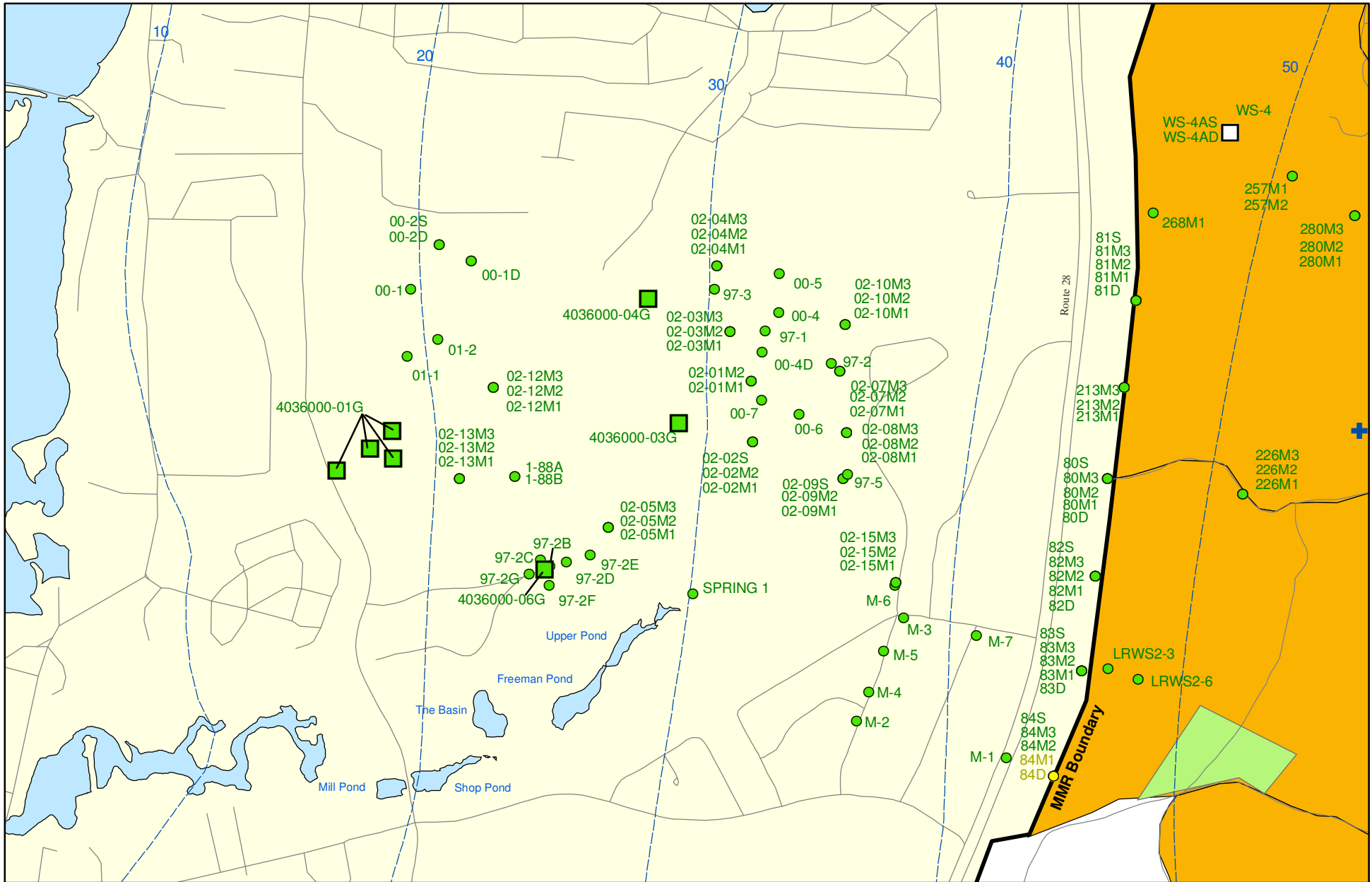
**DRAFT**

AMEC Earth & Environmental, Inc.  
Westford, Massachusetts

Sources & Notes  
Base map data from US Geological Survey  
7 1/2 minute Topographic Maps  
Source: Office of Geographic and Environmental Information (MassGIS)  
Commonwealth of Massachusetts  
Executive Office of Environmental Affairs

**FIGURE 1**

**Inset Map**



Sources & Notes:  
 Base map data from US Geological Survey  
 7 1/2 minute Topographic maps  
 Source: Office of Geographic and  
 Environmental Information (MassGIS)  
 Commonwealth of Massachusetts  
 Executive Office of Environmental Affairs

- Validated Detection Less than Maximum Contaminant Level/Health Advisories
- Validated Non-Detect
- + Current Gun Position
- Validated Non-Detect Water Supply Well
- Proposed Water Supply Well
- Combat Training Areas
- Military Training Areas
- Water Table Contour (Feet NGVD)  
AMEC, September 2003

**Explosives in Groundwater Compared to Maximum Contaminant Level/Health Advisories Validated Data as of 02/25/05**

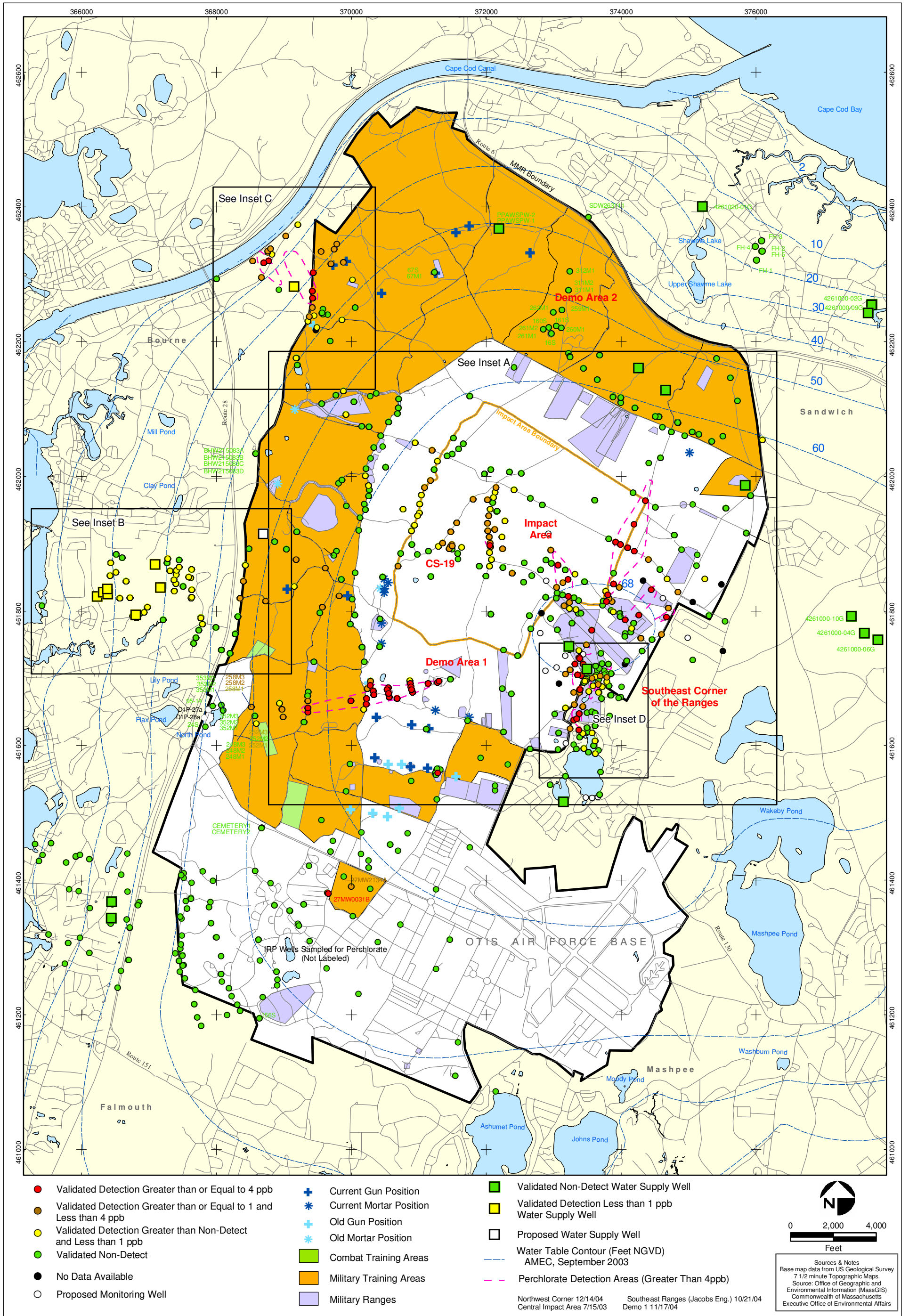
Impact Area  
Groundwater Study Program

AMEC Earth & Environmental, Inc.  
Westford, Massachusetts

**DRAFT**

*Inset Map B*

FIGURE  
**1**

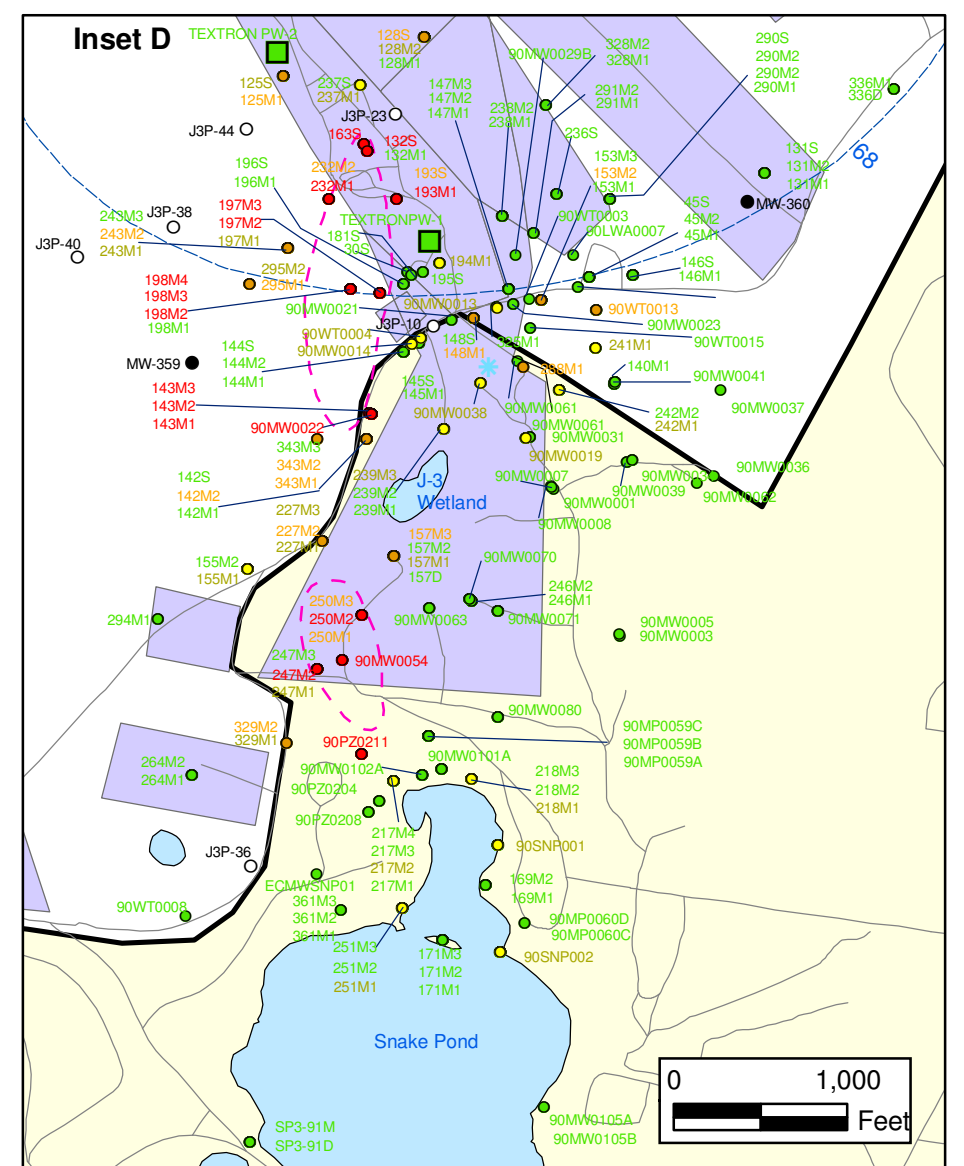
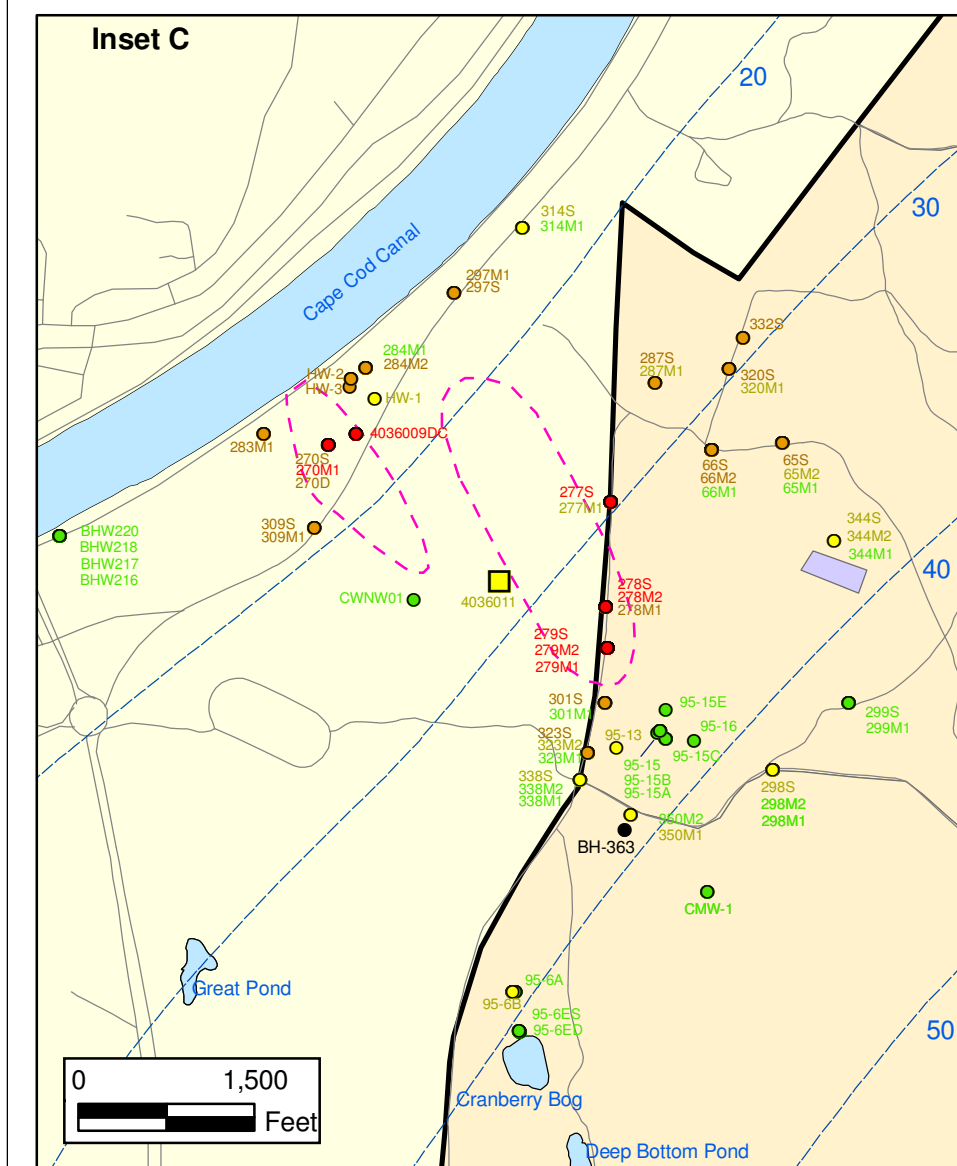
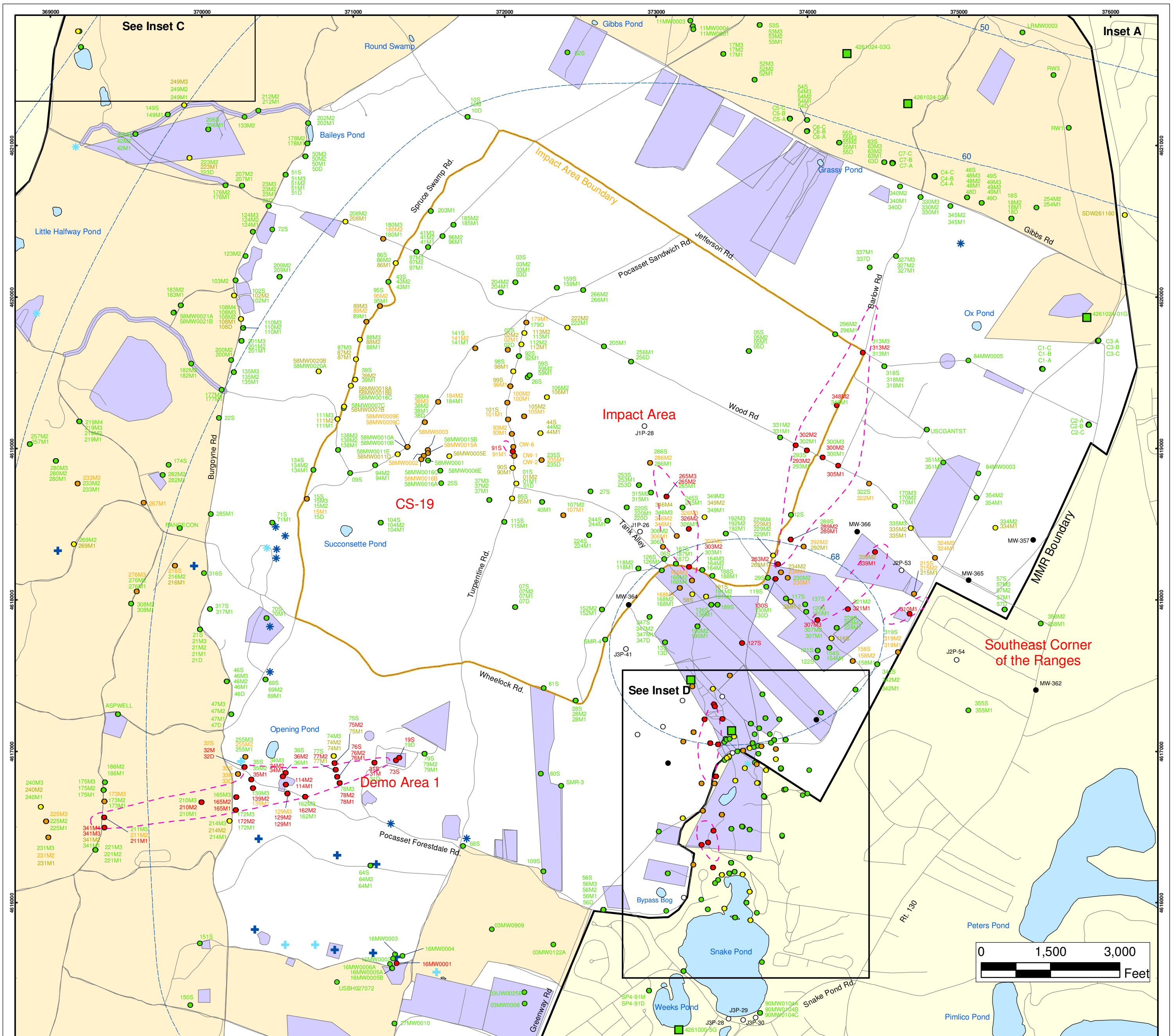


**DRAFT**  
 AMEC Earth & Environmental, Inc.  
 Westford, Massachusetts

**Perchlorate in Groundwater  
 Compared to a 4 ppb Concentration  
 Validated Data as of 02/25/05**

FIGURE

8



### Perchlorate in Groundwater Compared to a 4 PPB Concentration Validated Data as of 02/25/05

- Validated Detection Greater than or Equal to 4 ppb
- Validated Detection Greater than or Equal to 1 and Less than 4 ppb
- Validated Detection Less than 1 ppb
- Validated Non-Detect
- No Data Available
- Proposed Monitoring Well
- Military Training Areas
- Military Ranges
- ⊕ Current Gun Position
- ⊕ Current Mortar Position
- ⊕ Old Gun Position
- ⊕ Old Mortar Position
- Validated Non-Detect Water Supply Well
- Validated Detection Less Than 1 ppb Water Supply Well
- Water Table Contour (Feet NGVD), AMEC, September 2003
- - - Perchlorate Detection Areas Greater than 4ppb\*

\*Southeast Ranges 10/21/04; Central Impact Area 7/15/03; Demo 1 11/17/04; NorthWest Corner 12/14/04

**Impact Area Groundwater Study Program**

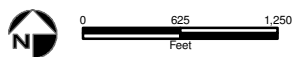
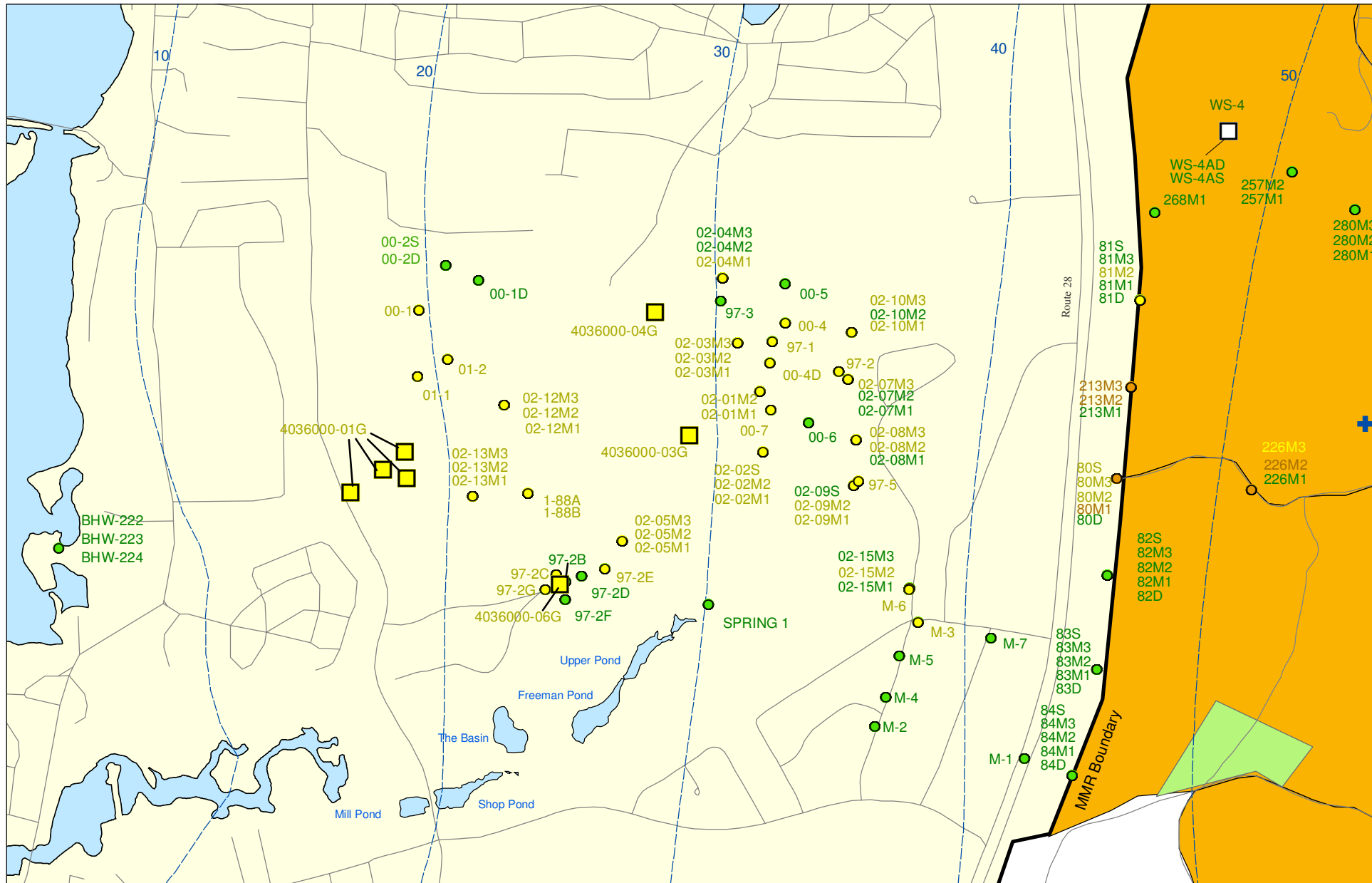
**DRAFT**

AMEC Earth & Environmental, Inc.  
Westford, Massachusetts

Sources & Notes  
Base map data from U.S. Geological Survey  
7 1/2 minute Topographic Maps.  
Source: Office of Geographic and  
Environmental Information (MassGIS)  
Commonwealth of Massachusetts  
Executive Office of Environmental Affairs

**FIGURE 8**

**Inset Map**



Sources & Notes:  
 Base map data from US Geological Survey  
 7 1/2 minute Topographic maps.  
 Source: Office of Geographic and  
 Environmental Information (MassGIS)  
 Commonwealth of Massachusetts  
 Executive Office of Environmental Affairs

- Validated Detection Greater than or Equal to 1 and Less than 4 ppb
- Validated Detection Greater than Non-Detect and Less than 1 ppb
- Validated Non-Detect
- ⊕ Current Gun Position

- Validated Detection Less than 1 ppb Water Supply Well
- Proposed Water Supply Well
- Combat Training Areas
- Military Training Areas
- Water Table Contour (Feet NGVD)  
 AMEC, September 2003

**Perchlorate in Groundwater  
 Compared to a 4 ppb Concentration  
 Validated Data as of 02/25/05**



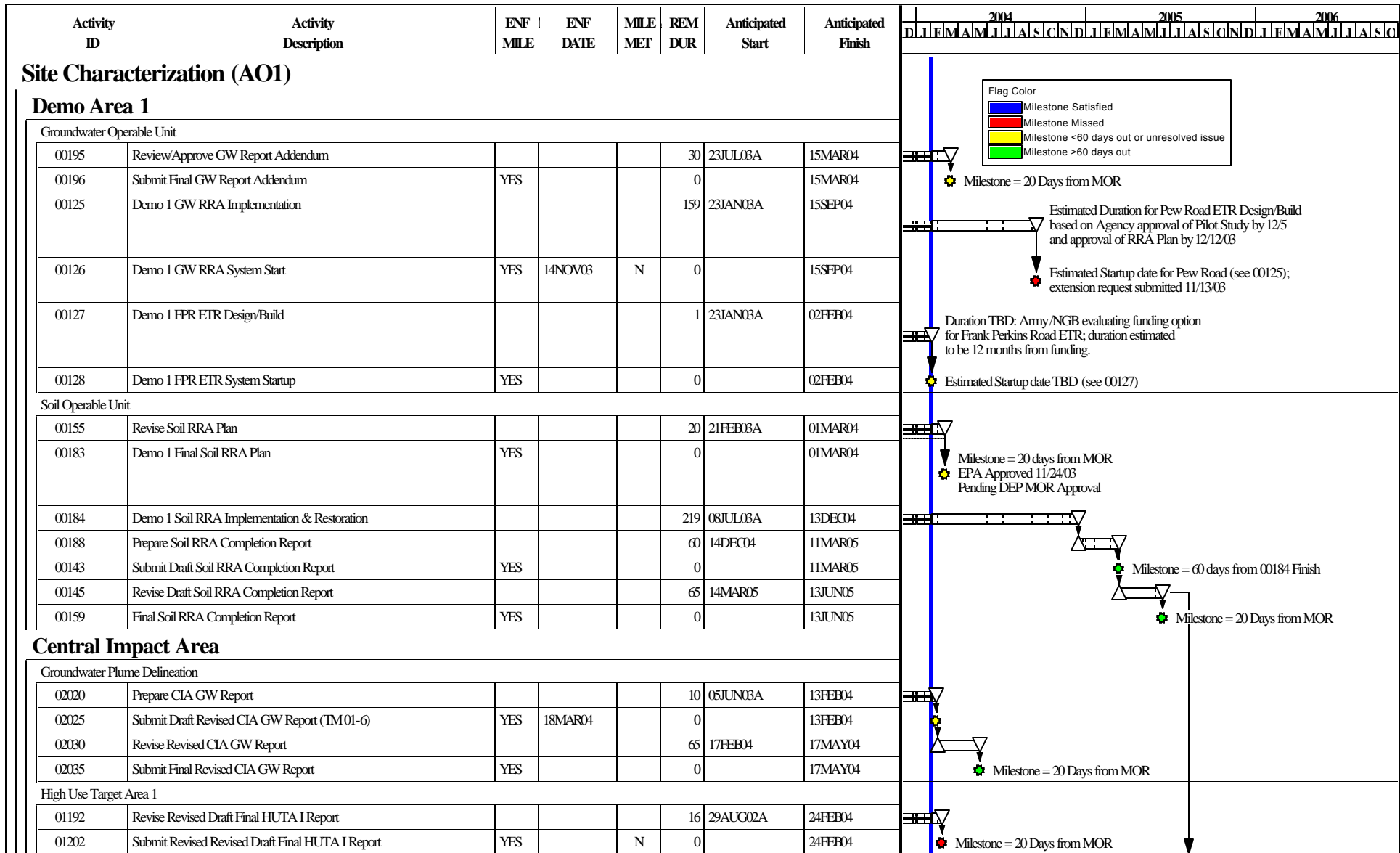


Figure 9

Start Date 29FEB00  
 Finish Date 31JUL09  
 Data Date 01FEB04  
 Run Date 09FEB04 14:21



DRAFT

UB09

Sheet 1 of 13

Combined Schedule for the  
 Impact Area GW Study Program  
 as of 01FEB04

| Date | Revision | Checked | Approved |
|------|----------|---------|----------|
|      |          |         |          |
|      |          |         |          |
|      |          |         |          |
|      |          |         |          |

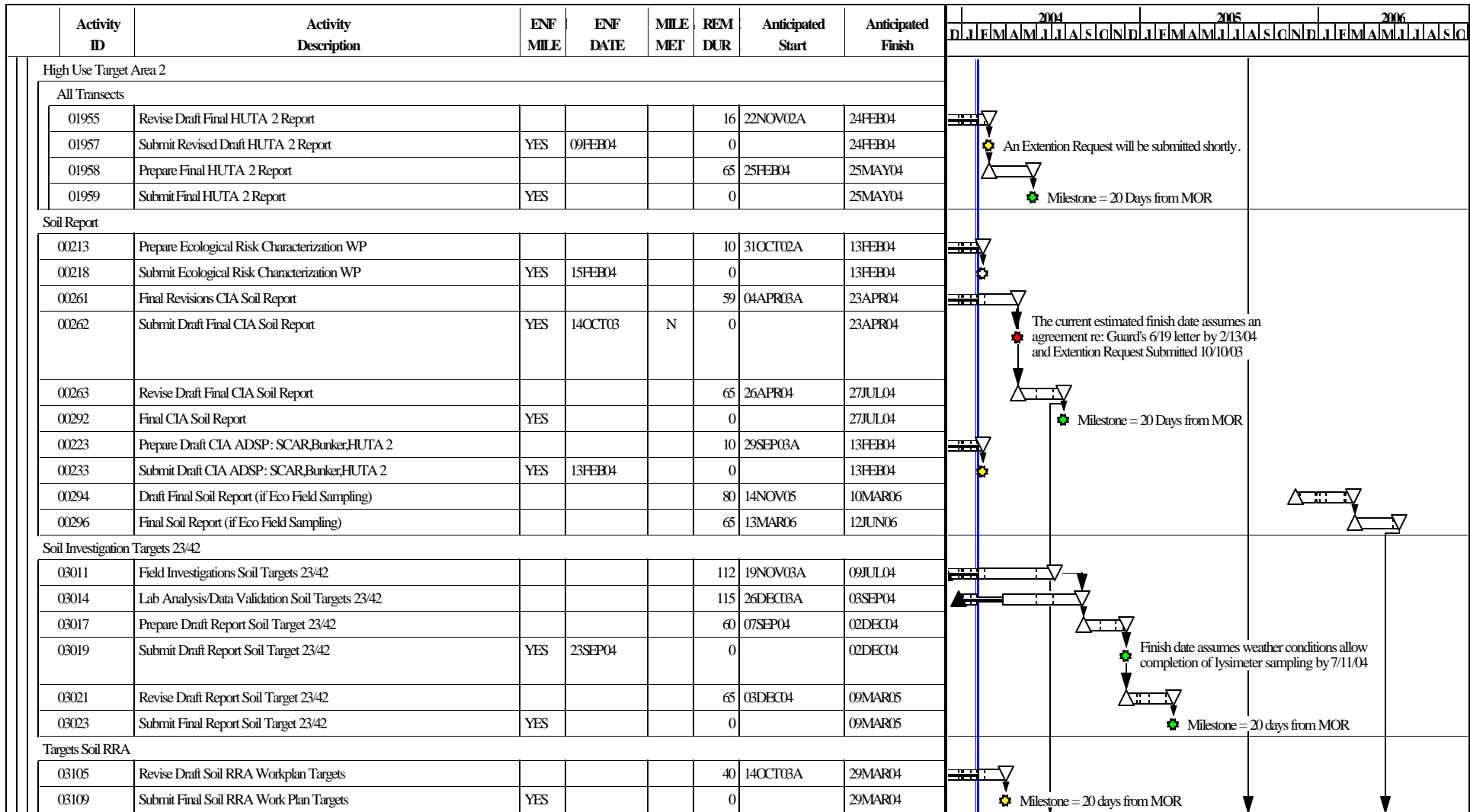


Figure 9

Start Date 29FEB00  
 Finish Date 31JUL09  
 Data Date 01FEB04  
 Run Date 09FEB04 14:21



DRAFT

UB09

Sheet 2 of 13

Combined Schedule for the  
 Impact Area GW Study Program  
 as of 01FEB04

© Primavera Systems, Inc.

| Date | Revision | Checked | Approved |
|------|----------|---------|----------|
|      |          |         |          |
|      |          |         |          |
|      |          |         |          |
|      |          |         |          |



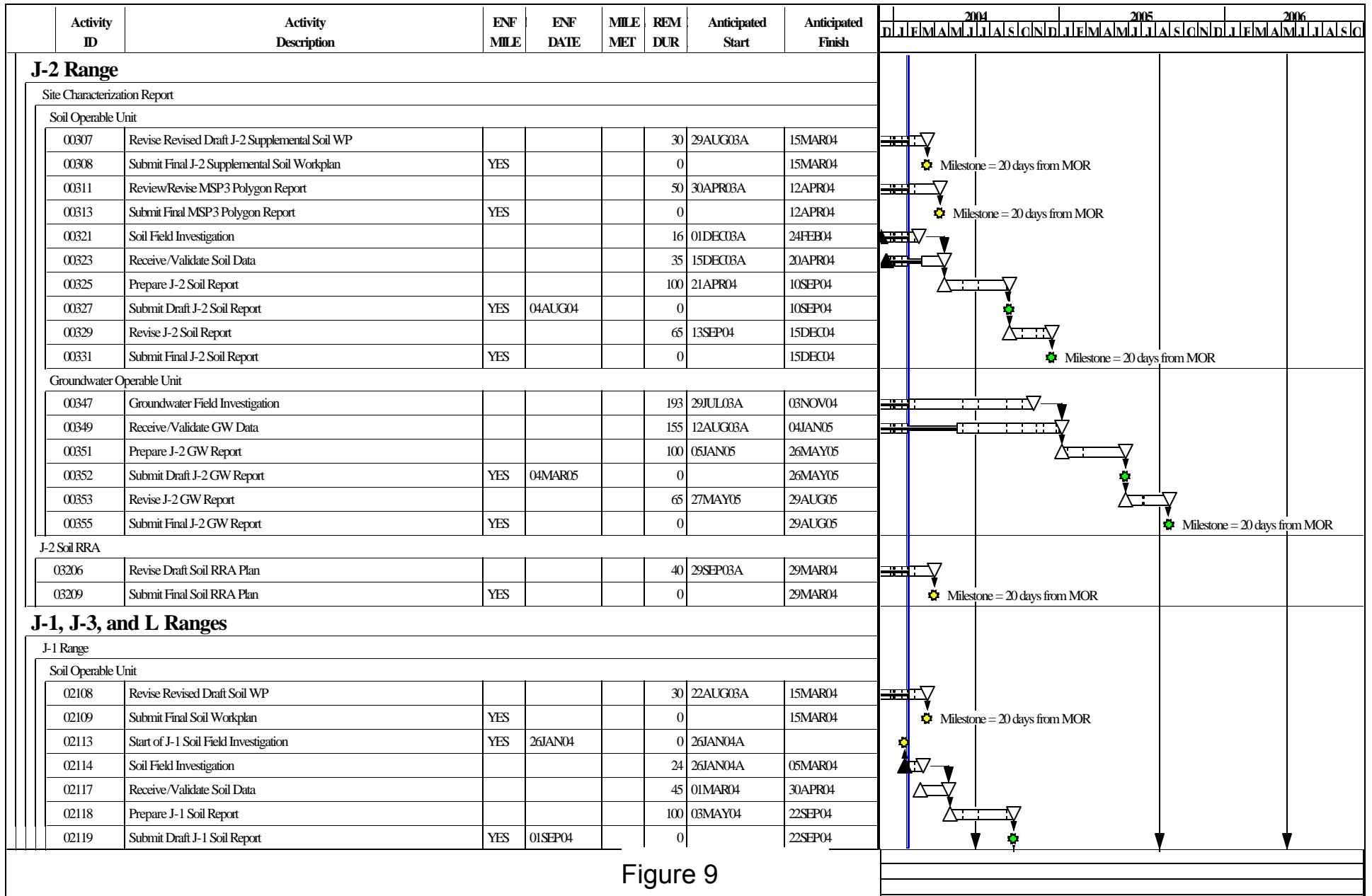


Figure 9

| Start Date      29FEB00<br>Finish Date     31JUL09<br>Data Date       01FEB04<br>Run Date        09FEB04 14:21<br><br>© Primavera Systems, Inc. | <br><b>DRAFT</b> | <b>UB09</b><br><b>Sheet 3 of 13</b><br><b>Combined Schedule for the Impact Area GW Study Program as of 01FEB04</b> | <table border="1"> <thead> <tr> <th>Date</th> <th>Revision</th> <th>Checked</th> <th>Approved</th> </tr> </thead> <tbody> <tr><td> </td><td> </td><td> </td><td> </td></tr> <tr><td> </td><td> </td><td> </td><td> </td></tr> <tr><td> </td><td> </td><td> </td><td> </td></tr> </tbody> </table> | Date | Revision | Checked | Approved |  |  |  |  |  |  |  |  |  |  |  |  |
|---|------------------|--|---|------|----------|---------|----------|--|--|--|--|--|--|--|--|--|--|--|--|
| Date  | Revision         | Checked  | Approved  |      |          |         |          |  |  |  |  |  |  |  |  |  |  |  |  |
|   |                  |  |   |      |          |         |          |  |  |  |  |  |  |  |  |  |  |  |  |
|   |                  |  |   |      |          |         |          |  |  |  |  |  |  |  |  |  |  |  |  |
|   |                  |  |   |      |          |         |          |  |  |  |  |  |  |  |  |  |  |  |  |

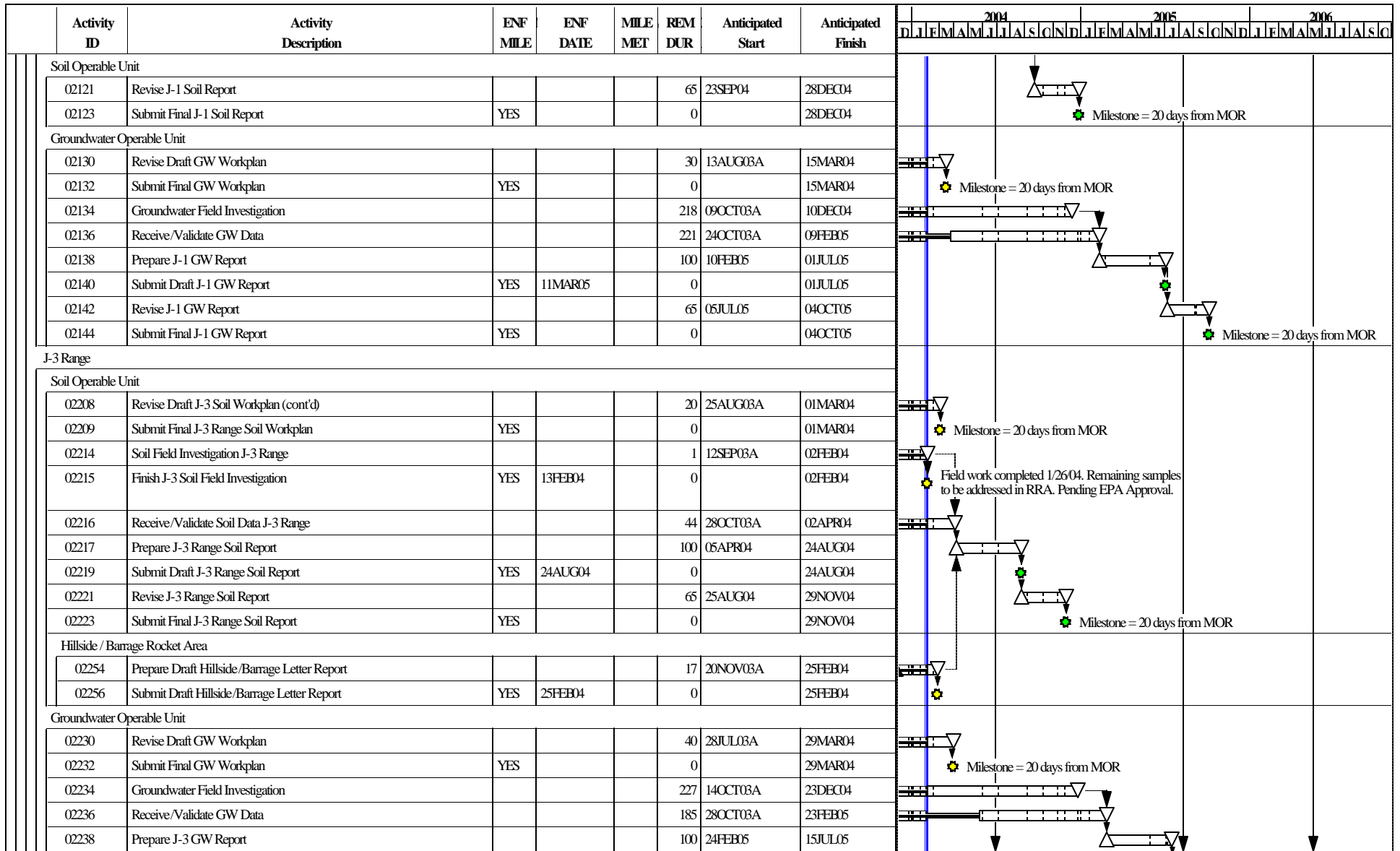


Figure 9

Start Date 29FEB00  
 Finish Date 31JUL09  
 Data Date 01FEB04  
 Run Date 09FEB04 14:21



DRAFT

UB09

Sheet 4 of 13

Combined Schedule for the  
 Impact Area GW Study Program  
 as of 01FEB04

| Date | Revision | Checked | Approved |
|------|----------|---------|----------|
|      |          |         |          |
|      |          |         |          |
|      |          |         |          |
|      |          |         |          |

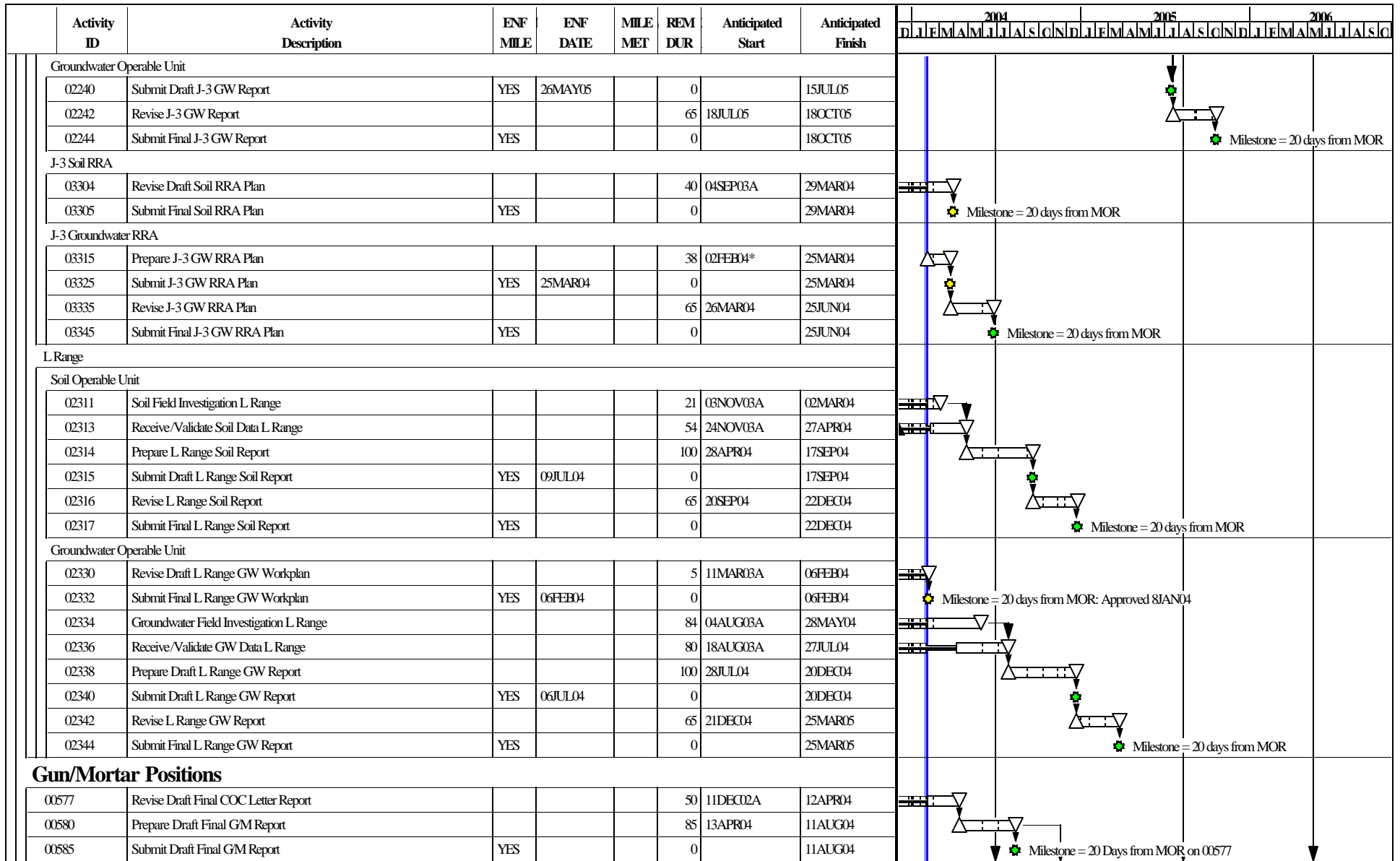


Figure 9

Start Date 29FEB00  
 Finish Date 31JUL09  
 Data Date 01FEB04  
 Run Date 09FEB04 14:21

Early Bar  
 Progress Bar

**DRAFT**

© Primavera Systems, Inc.

**UB09** **Sheet 5 of 13**

**Combined Schedule for the  
 Impact Area GW Study Program  
 as of 01FEB04**

| Date | Revision | Checked | Approved |
|------|----------|---------|----------|
|      |          |         |          |
|      |          |         |          |
|      |          |         |          |
|      |          |         |          |
|      |          |         |          |

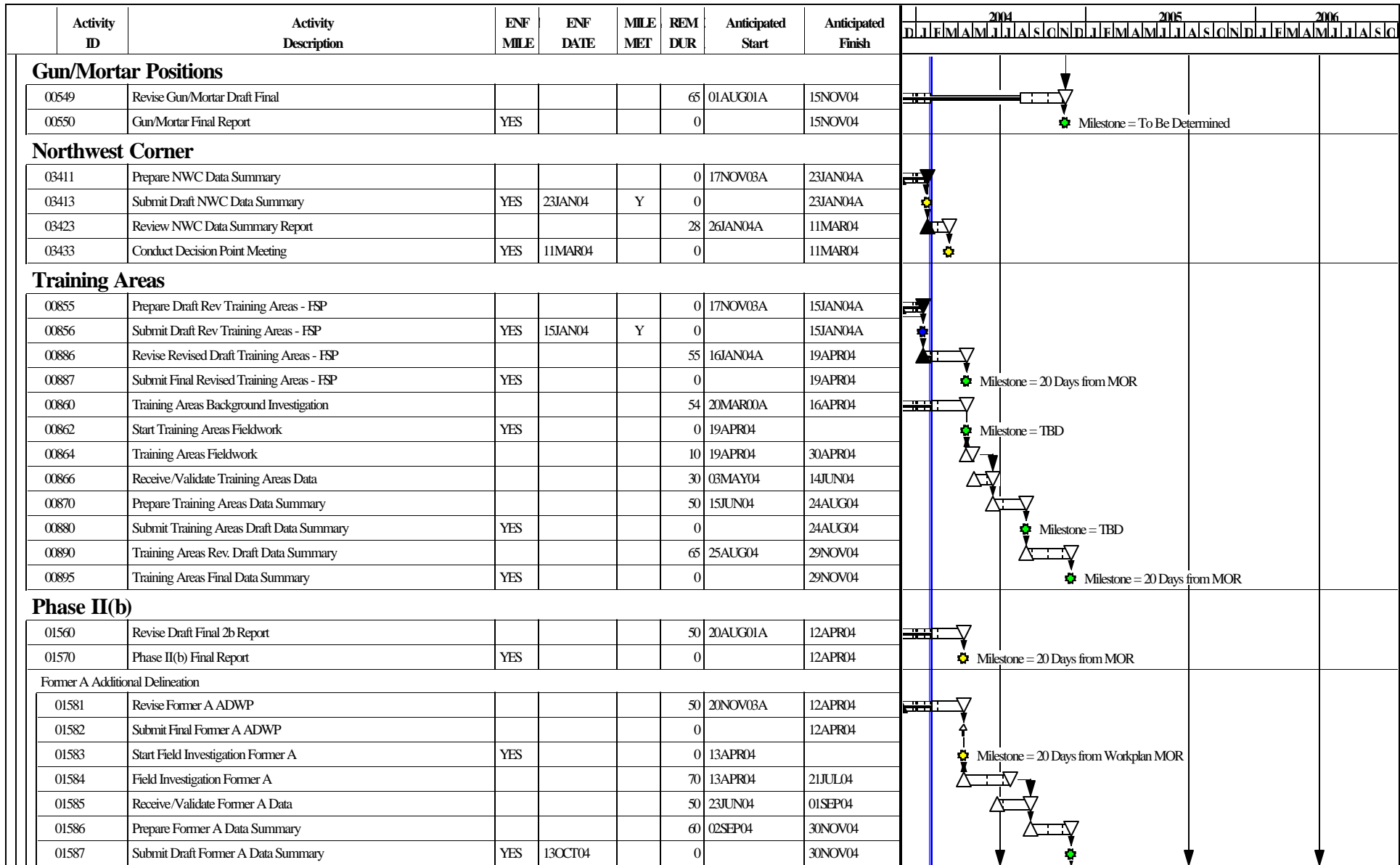


Figure 9

Start Date 29FEB00  
 Finish Date 31JUL09  
 Data Date 01FEB04  
 Run Date 09FEB04 14:21



DRAFT

UB09

Sheet 6 of 13

Combined Schedule for the  
 Impact Area GW Study Program  
 as of 01FEB04

| Date | Revision | Checked | Approved |
|------|----------|---------|----------|
|      |          |         |          |
|      |          |         |          |
|      |          |         |          |

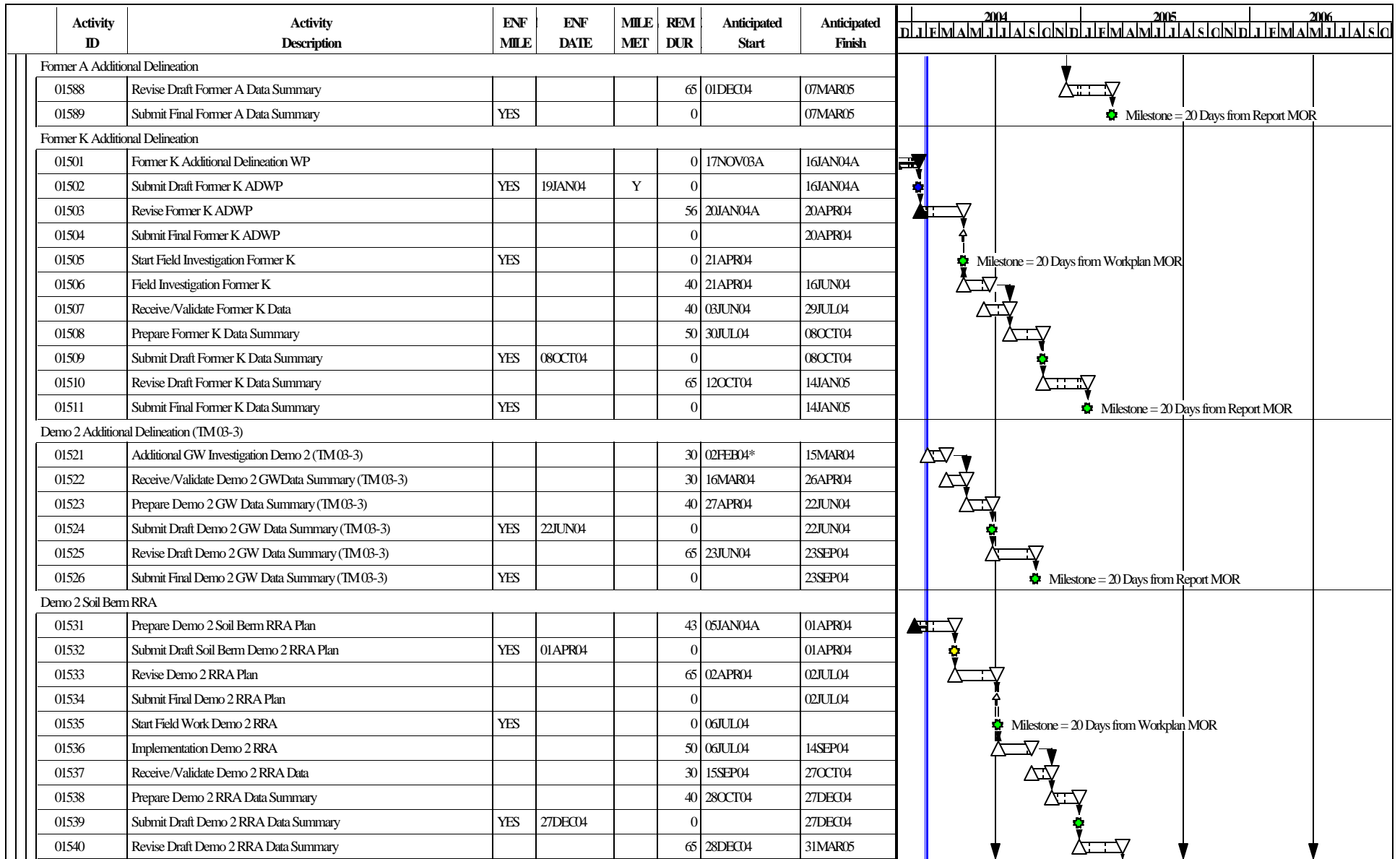


Figure 9

Start Date 29FEB00  
 Finish Date 31JUL09  
 Data Date 01FEB04  
 Run Date 09FEB04 14:21



DRAFT

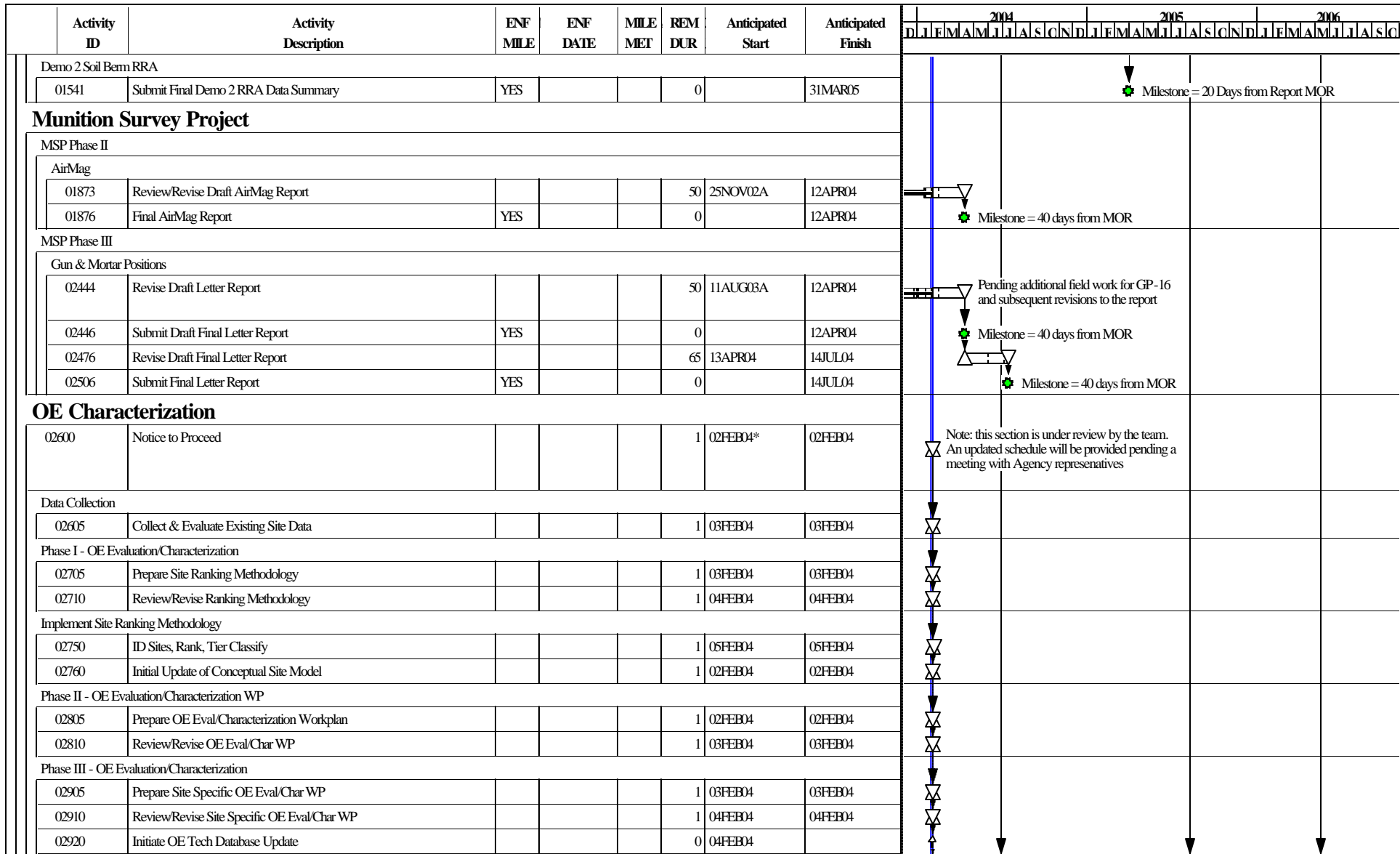
UB09

Sheet 7 of 13

Combined Schedule for the  
 Impact Area GW Study Program  
 as of 01FEB04

© Primavera Systems, Inc.

| Date | Revision | Checked | Approved |
|------|----------|---------|----------|
|      |          |         |          |
|      |          |         |          |
|      |          |         |          |



Note: this section is under review by the team. An updated schedule will be provided pending a meeting with Agency representatives

Figure 9

Start Date 29FEB00 Early Bar  
 Finish Date 31JUL09 Progress Bar  
 Data Date 01FEB04  
 Run Date 09FEB04 14:21

DRAFT

UB09 Sheet 8 of 13

Combined Schedule for the  
Impact Area GW Study Program  
as of 01FEB04

| Date | Revision | Checked | Approved |
|------|----------|---------|----------|
|      |          |         |          |
|      |          |         |          |
|      |          |         |          |
|      |          |         |          |

| Activity ID                                | Activity Description                             | ENF MILE | ENF DATE | MILE MET | REM DUR | Anticipated Start | Anticipated Finish | 2004   |   |   |   |   |   |   |   |   |   |   |   | 2005 |   |   |   |   |   |   |   |   |   |   |   | 2006 |   |   |   |   |   |   |   |   |   |   |   |
|--|--|----------|----------|----------|---------|-------------------|--------------------|--|---|---|---|---|---|---|---|---|---|---|---|------|---|---|---|---|---|---|---|---|---|---|---|------|---|---|---|---|---|---|---|---|---|---|---|
|  |  |          |          |          |         |                   |                    | D  | J | F | M | A | M | J | J | A | S | O | N | D    | J | F | M | A | M | J | J | A | S | O | N | D    | J | F | M | A | M | J | J | A | S | O | N |
| Phase III - OE Evaluation/Characterization |  |          |          |          |         |                   |                    |  |   |   |   |   |   |   |   |   |   |   |   |      |   |   |   |   |   |   |   |   |   |   |   |      |   |   |   |   |   |   |   |   |   |   |   |
| 02930                                      | Initiate Evaluation of Priority Sites            |          |          |          | 0       | 05FEB04           |                    |  |   |   |   |   |   |   |   |   |   |   |   |      |   |   |   |   |   |   |   |   |   |   |   |      |   |   |   |   |   |   |   |   |   |   |   |
| 02940                                      | Initiate Draft Site Specific OE Report           |          |          |          | 0       | 20JUL04           |                    |  |   |   |   |   |   |   |   |   |   |   |   |      |   |   |   |   |   |   |   |   |   |   |   |      |   |   |   |   |   |   |   |   |   |   |   |
| <b>Western Boundary</b>                    |  |          |          |          |         |                   |                    |  |   |   |   |   |   |   |   |   |   |   |   |      |   |   |   |   |   |   |   |   |   |   |   |      |   |   |   |   |   |   |   |   |   |   |   |
| 03463                                      | Field Investigation (Soil & Groundwater)         |          |          |          | 54      | 03FEB03A          | 16APR04            |  |   |   |   |   |   |   |   |   |   |   |   |      |   |   |   |   |   |   |   |   |   |   |   |      |   |   |   |   |   |   |   |   |   |   |   |
| 03473                                      | Prepare Western Boundary Draft Report            |          |          |          | 110     | 19APR04           | 22SEP04            |  |   |   |   |   |   |   |   |   |   |   |   |      |   |   |   |   |   |   |   |   |   |   |   |      |   |   |   |   |   |   |   |   |   |   |   |
| 03483                                      | Submit Western Boundary Draft Report             | YES      | 01SEP04  |          | 0       |                   | 22SEP04            |  |   |   |   |   |   |   |   |   |   |   |   |      |   |   |   |   |   |   |   |   |   |   |   |      |   |   |   |   |   |   |   |   |   |   |   |
| <b>Program Wide Activities</b>             |  |          |          |          |         |                   |                    |  |   |   |   |   |   |   |   |   |   |   |   |      |   |   |   |   |   |   |   |   |   |   |   |      |   |   |   |   |   |   |   |   |   |   |   |
| Military Munitions Management Plan         |  |          |          |          |         |                   |                    |  |   |   |   |   |   |   |   |   |   |   |   |      |   |   |   |   |   |   |   |   |   |   |   |      |   |   |   |   |   |   |   |   |   |   |   |
| 03513                                      | Prepare Revised Draft Munitions Managment Plan   |          |          |          | 0       | 28OCT03A          | 23DEC03A           |  |   |   |   |   |   |   |   |   |   |   |   |      |   |   |   |   |   |   |   |   |   |   |   |      |   |   |   |   |   |   |   |   |   |   |   |
| 03523                                      | Submit Revised Draft Munitions Managment Plan    | YES      | 01MAR04  | Y        | 0       |                   | 23DEC03A           |  |   |   |   |   |   |   |   |   |   |   |   |      |   |   |   |   |   |   |   |   |   |   |   |      |   |   |   |   |   |   |   |   |   |   |   |
| OE and Range Residue Materials Disposition |  |          |          |          |         |                   |                    |  |   |   |   |   |   |   |   |   |   |   |   |      |   |   |   |   |   |   |   |   |   |   |   |      |   |   |   |   |   |   |   |   |   |   |   |
| 03552                                      | Revise Draft OE and RR Material Disposition Plan |          |          |          | 50      | 04NOV03A          | 12APR04            |  |   |   |   |   |   |   |   |   |   |   |   |      |   |   |   |   |   |   |   |   |   |   |   |      |   |   |   |   |   |   |   |   |   |   |   |
| 03553                                      | Submit Final OE and RR Material Disposition Plan | YES      |          |          | 0       |                   | 12APR04            | Milestone = 20 days from MOR   |   |   |   |   |   |   |   |   |   |   |   |      |   |   |   |   |   |   |   |   |   |   |   |      |   |   |   |   |   |   |   |   |   |   |   |
| IDM Material Disposition                   |  |          |          |          |         |                   |                    |  |   |   |   |   |   |   |   |   |   |   |   |      |   |   |   |   |   |   |   |   |   |   |   |      |   |   |   |   |   |   |   |   |   |   |   |
| 03583                                      | Prepare Revised Draft IDM Materials Disp. Plan   |          |          |          | 14      | 24DEC03A          | 20FEB04            |  |   |   |   |   |   |   |   |   |   |   |   |      |   |   |   |   |   |   |   |   |   |   |   |      |   |   |   |   |   |   |   |   |   |   |   |
| 03593                                      | Submit Revised Draft IDM Materials Disp. Plan    |          |          |          | 0       |                   | 20FEB04            |  |   |   |   |   |   |   |   |   |   |   |   |      |   |   |   |   |   |   |   |   |   |   |   |      |   |   |   |   |   |   |   |   |   |   |   |
| 03603                                      | Prepare Final IDM Materials Disp. Plan           |          |          |          | 65      | 23FEB04           | 21MAY04            | Draft submitted 11/3/03 was disapproved 12/23/03<br>EPA REQUESTED RESUBMITTAL ON 2/20/04 |   |   |   |   |   |   |   |   |   |   |   |      |   |   |   |   |   |   |   |   |   |   |   |      |   |   |   |   |   |   |   |   |   |   |   |
| 03613                                      | Submit Final IDM Materials Disp. Plan            | YES      |          |          | 0       |                   | 21MAY04            | Milestone = 20 days from MOR   |   |   |   |   |   |   |   |   |   |   |   |      |   |   |   |   |   |   |   |   |   |   |   |      |   |   |   |   |   |   |   |   |   |   |   |
| Blow In Place (BIP) Summary Reports        |  |          |          |          |         |                   |                    |  |   |   |   |   |   |   |   |   |   |   |   |      |   |   |   |   |   |   |   |   |   |   |   |      |   |   |   |   |   |   |   |   |   |   |   |
| 03633                                      | Submit 7/02-9/02 Draft Report                    |          |          |          | 0       |                   | 12DEC03A           |  |   |   |   |   |   |   |   |   |   |   |   |      |   |   |   |   |   |   |   |   |   |   |   |      |   |   |   |   |   |   |   |   |   |   |   |
| 03643                                      | Submit 1/03-3/03 Draft Report                    |          |          |          | 0       |                   | 12MAR04*           |  |   |   |   |   |   |   |   |   |   |   |   |      |   |   |   |   |   |   |   |   |   |   |   |      |   |   |   |   |   |   |   |   |   |   |   |
| 03653                                      | Submit 4/03-6/03 Draft Report                    |          |          |          | 0       |                   | 09APR04*           |  |   |   |   |   |   |   |   |   |   |   |   |      |   |   |   |   |   |   |   |   |   |   |   |      |   |   |   |   |   |   |   |   |   |   |   |
| 03663                                      | Submit 7/03-9/03 Draft Report                    |          |          |          | 0       |                   | 07MAY04*           |  |   |   |   |   |   |   |   |   |   |   |   |      |   |   |   |   |   |   |   |   |   |   |   |      |   |   |   |   |   |   |   |   |   |   |   |
| 03673                                      | Submit 10/03-12/03 Draft Report                  |          |          |          | 0       |                   | 11JUN04*           |  |   |   |   |   |   |   |   |   |   |   |   |      |   |   |   |   |   |   |   |   |   |   |   |      |   |   |   |   |   |   |   |   |   |   |   |
| 03683                                      | Submit 10/02-12/02 Draft Report                  |          |          |          | 0       |                   | 17FEB04*           |  |   |   |   |   |   |   |   |   |   |   |   |      |   |   |   |   |   |   |   |   |   |   |   |      |   |   |   |   |   |   |   |   |   |   |   |
| <b>Groundwater Monitoring Programs</b>     |  |          |          |          |         |                   |                    |  |   |   |   |   |   |   |   |   |   |   |   |      |   |   |   |   |   |   |   |   |   |   |   |      |   |   |   |   |   |   |   |   |   |   |   |
| 08310                                      | Review/Revise Site-Wide Perchlorate Report       |          |          |          | 42      | 20DEC02A          | 31MAR04            |  |   |   |   |   |   |   |   |   |   |   |   |      |   |   |   |   |   |   |   |   |   |   |   |      |   |   |   |   |   |   |   |   |   |   |   |
| 08315                                      | Final Site-Wide Perchlorate Report               | YES      | 13JAN04  |          | 0       |                   | 31MAR04            | Milestone = 20 days from MOR: Approved 12DEC03A<br>Extension to 31Mar04 was Requested    |   |   |   |   |   |   |   |   |   |   |   |      |   |   |   |   |   |   |   |   |   |   |   |      |   |   |   |   |   |   |   |   |   |   |   |
| LTGM Sampling for 2004                     |  |          |          |          |         |                   |                    |  |   |   |   |   |   |   |   |   |   |   |   |      |   |   |   |   |   |   |   |   |   |   |   |      |   |   |   |   |   |   |   |   |   |   |   |
| 08350                                      | Prepare/Submit PEP Frequency Summary             |          |          |          | 15      | 20JAN04A          | 23FEB04            |  |   |   |   |   |   |   |   |   |   |   |   |      |   |   |   |   |   |   |   |   |   |   |   |      |   |   |   |   |   |   |   |   |   |   |   |

Figure 9

Start Date 29FEB00  
 Finish Date 31JUL09  
 Data Date 01FEB04  
 Run Date 09FEB04 14:21



DRAFT

UB09

Sheet 9 of 13

Combined Schedule for the  
 Impact Area GW Study Program  
 as of 01FEB04

| Date | Revision | Checked | Approved |
|------|----------|---------|----------|
|      |          |         |          |
|      |          |         |          |
|      |          |         |          |

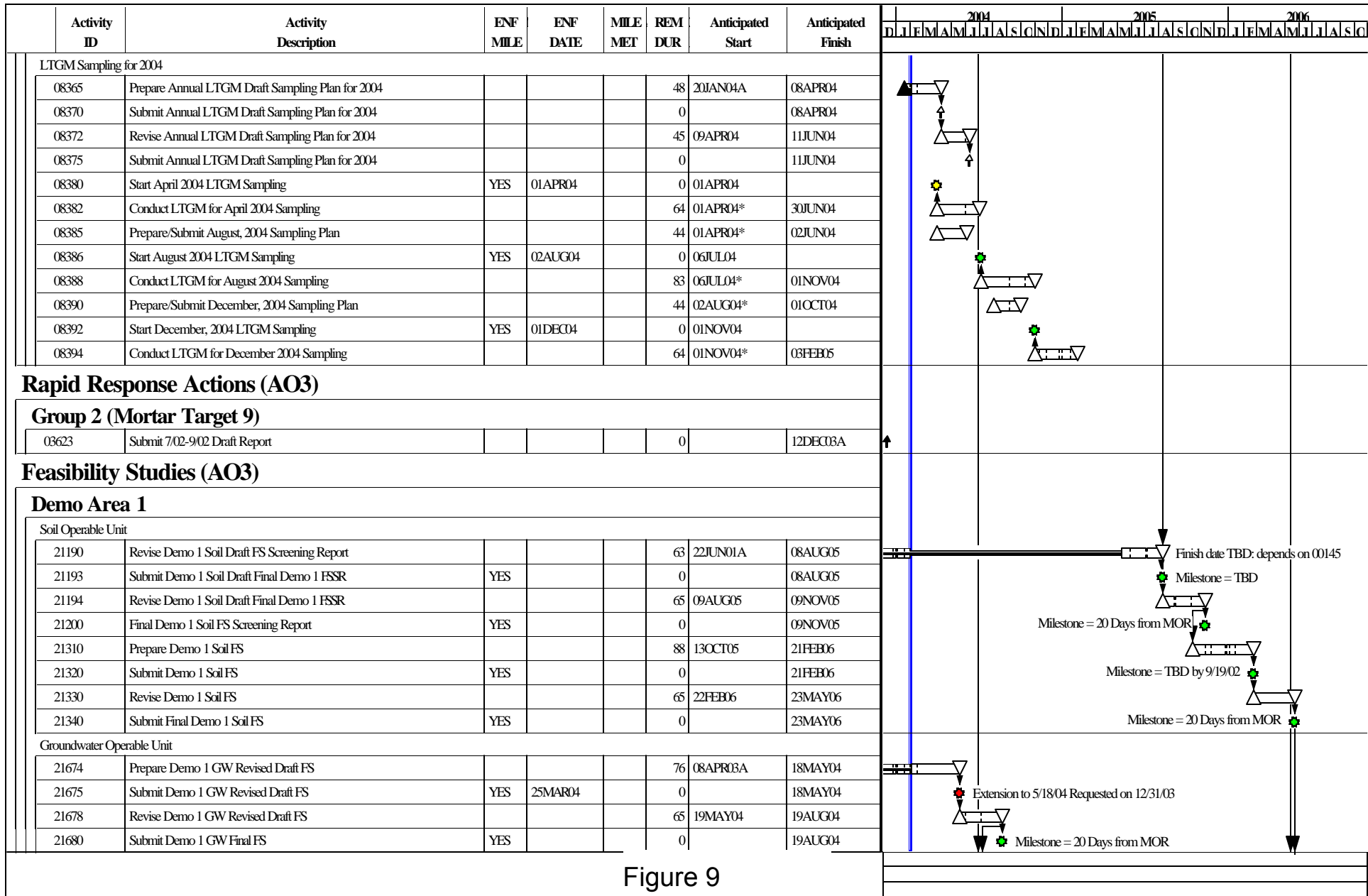
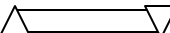



Figure 9

Start Date 29FEB00  
 Finish Date 31JUL09  
 Data Date 01FEB04  
 Run Date 09FEB04 14:21

 Early Bar  
 Progress Bar

DRAFT

© Primavera Systems, Inc.

UB09 Sheet 10 of 13

Combined Schedule for the  
 Impact Area GW Study Program  
 as of 01FEB04

| Date | Revision | Checked | Approved |
|------|----------|---------|----------|
|      |          |         |          |
|      |          |         |          |
|      |          |         |          |



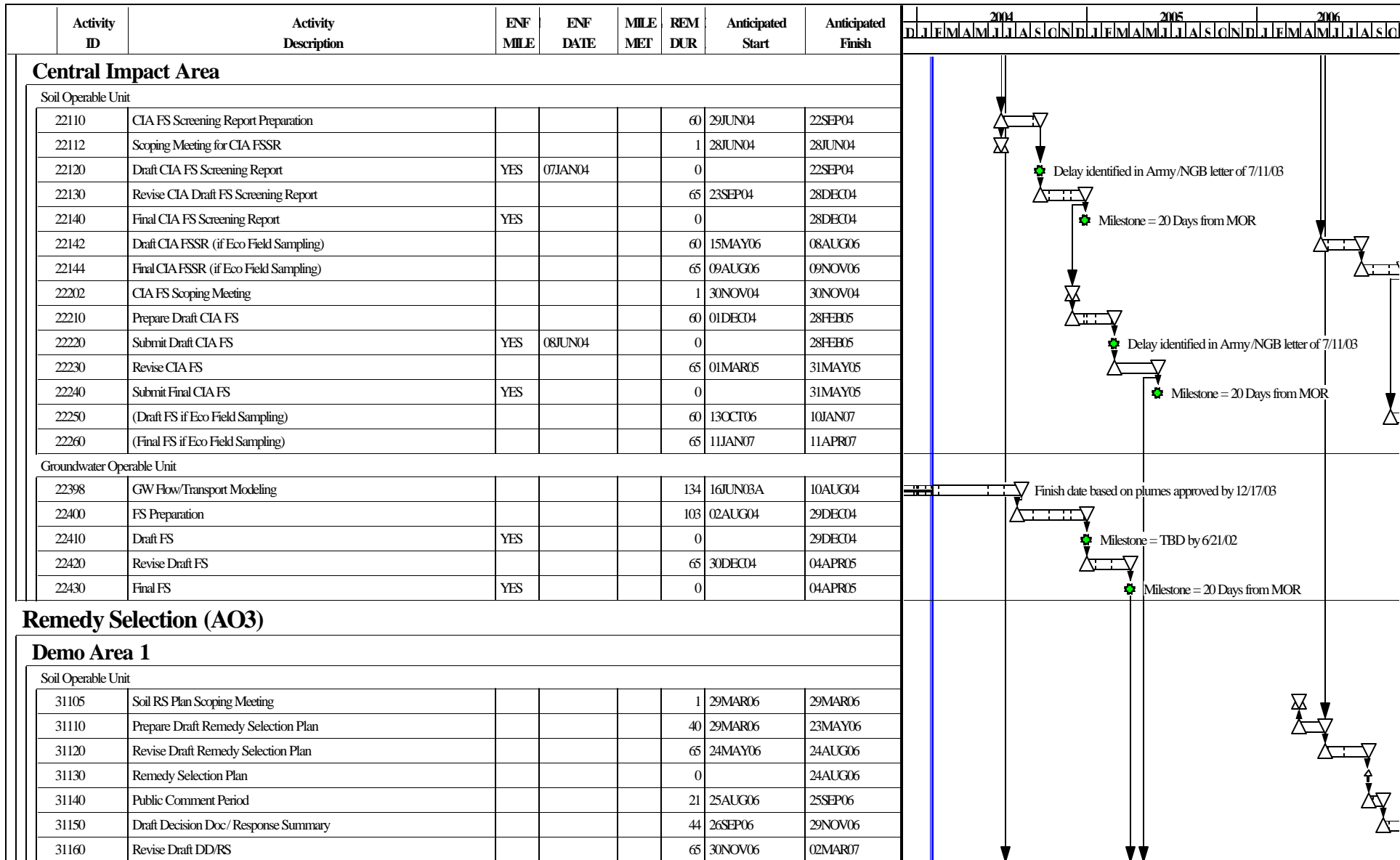


Figure 9

Start Date 29FEB00  
 Finish Date 31JUL09  
 Data Date 01FEB04  
 Run Date 09FEB04 14:21



DRAFT

UB09

Sheet 11 of 13

Combined Schedule for the  
 Impact Area GW Study Program  
 as of 01FEB04

© Primavera Systems, Inc.

| Date | Revision | Checked | Approved |
|------|----------|---------|----------|
|      |          |         |          |
|      |          |         |          |
|      |          |         |          |
|      |          |         |          |

| Activity ID                | Activity Description                           | ENF MILE | ENF DATE | MILE MET | REM DUR | Anticipated Start | Anticipated Finish | 2004 2005 2006<br>D J F M A M J J A S O N D J F M A M J J A S O N D J F M A M J J A S O N D |  |  |  |  |  |  |  |  |  |  |  |
|----------------------------|--|----------|----------|----------|---------|-------------------|--------------------|---|--|--|--|--|--|--|--|--|--|--|--|
| Soil Operable Unit         |  |          |          |          |         |                   |                    |   |  |  |  |  |  |  |  |  |  |  |  |
| 31170                      | Final Decision Doc/ Response Summary           |          |          |          | 0       |                   | 02MAR07            |   |  |  |  |  |  |  |  |  |  |  |  |
| Groundwater Operable Unit  |  |          |          |          |         |                   |                    |   |  |  |  |  |  |  |  |  |  |  |  |
| 31505                      | GW RS Plan Scoping Meeting                     |          |          |          | 1       | 09JUL04           | 09JUL04            |   |  |  |  |  |  |  |  |  |  |  |  |
| 31510                      | Prepare Draft Remedy Selection Plan            |          |          |          | 50      | 09JUL04           | 17SEP04            |   |  |  |  |  |  |  |  |  |  |  |  |
| 31515                      | Submit Demo 1 GW Draft RS Plan                 | YES      | 26JUL04  |          | 0       |                   | 17SEP04            |   |  |  |  |  |  |  |  |  |  |  |  |
| 31520                      | Revise Demo 1 GW Draft Remedy Selection Plan   |          |          |          | 65      | 20SEP04           | 22DEC04            |   |  |  |  |  |  |  |  |  |  |  |  |
| 31530                      | Demo 1 GW Remedy Selection Plan                |          |          |          | 0       |                   | 22DEC04            |   |  |  |  |  |  |  |  |  |  |  |  |
| 31540                      | Demo 1 GW Public Comment Period                |          |          |          | 22      | 23DEC04           | 26JAN05            |   |  |  |  |  |  |  |  |  |  |  |  |
| 31550                      | Demo 1 GW Draft Decision Doc/ Response Summary |          |          |          | 60      | 27JAN05           | 21APR05            |   |  |  |  |  |  |  |  |  |  |  |  |
| 31560                      | Revise Demo 1 GW Draft DD/RS                   |          |          |          | 65      | 22APR05           | 25JUL05            |   |  |  |  |  |  |  |  |  |  |  |  |
| 31570                      | Final Demo 1 GW Decision Doc/ Response Summary |          |          |          | 0       |                   | 25JUL05            |   |  |  |  |  |  |  |  |  |  |  |  |
| <b>Central Impact Area</b> |  |          |          |          |         |                   |                    |   |  |  |  |  |  |  |  |  |  |  |  |
| Soil Operable Unit         |  |          |          |          |         |                   |                    |   |  |  |  |  |  |  |  |  |  |  |  |
| 32105                      | Soil RS Plan Scoping Meeting                   |          |          |          | 1       | 03MAY05           | 03MAY05            |   |  |  |  |  |  |  |  |  |  |  |  |
| 32110                      | Prepare Draft Remedy Selection Plan            |          |          |          | 60      | 03MAY05           | 27JUL05            |   |  |  |  |  |  |  |  |  |  |  |  |
| 32120                      | Revise Draft Remedy Selection Plan             |          |          |          | 65      | 28JUL05           | 28OCT05            |   |  |  |  |  |  |  |  |  |  |  |  |
| 32130                      | Remedy Selection Plan                          |          |          |          | 0       |                   | 28OCT05            |   |  |  |  |  |  |  |  |  |  |  |  |
| 32140                      | Public Comment Period                          |          |          |          | 21      | 31OCT05           | 30NOV05            |   |  |  |  |  |  |  |  |  |  |  |  |
| 32150                      | Draft Decision Doc/ Response Summary           |          |          |          | 64      | 01DEC05           | 06MAR06            |   |  |  |  |  |  |  |  |  |  |  |  |
| 32160                      | Revise Draft DD/RS                             |          |          |          | 65      | 07MAR06           | 06JUN06            |   |  |  |  |  |  |  |  |  |  |  |  |
| 32170                      | Final Decision Doc/ Response Summary           |          |          |          | 0       |                   | 06JUN06            |   |  |  |  |  |  |  |  |  |  |  |  |
| 32172                      | Draft DD/RS (if Eco Field Sampling)            |          |          |          | 210     | 12DEC06           | 04OCT07            |   |  |  |  |  |  |  |  |  |  |  |  |
| 32174                      | Final DD/RS (if Eco Field Sampling)            |          |          |          | 65      | 05OCT07           | 08JAN08            |   |  |  |  |  |  |  |  |  |  |  |  |
| Groundwater Operable Unit  |  |          |          |          |         |                   |                    |   |  |  |  |  |  |  |  |  |  |  |  |
| 32505                      | GW RS Plan Scoping Meeting                     |          |          |          | 1       | 07JAN05           | 07JAN05            |   |  |  |  |  |  |  |  |  |  |  |  |
| 32510                      | Prepare Draft Remedy Selection Plan            |          |          |          | 60      | 07JAN05           | 04APR05            |   |  |  |  |  |  |  |  |  |  |  |  |
| 32520                      | Revise Draft Remedy Selection Plan             |          |          |          | 65      | 05APR05           | 06JUL05            |   |  |  |  |  |  |  |  |  |  |  |  |
| 32530                      | Remedy Selection Plan                          |          |          |          | 0       |                   | 06JUL05            |   |  |  |  |  |  |  |  |  |  |  |  |
| 32540                      | Public Comment Period                          |          |          |          | 21      | 07JUL05           | 04AUG05            |   |  |  |  |  |  |  |  |  |  |  |  |
| 32550                      | Draft Decision Doc/ Response Summary           |          |          |          | 64      | 05AUG05           | 04NOV05            |   |  |  |  |  |  |  |  |  |  |  |  |
| 32560                      | Revise Draft DD/RS                             |          |          |          | 65      | 07NOV05           | 10FEB06            |   |  |  |  |  |  |  |  |  |  |  |  |

Figure 9

Start Date 29FEB00  
 Finish Date 31JUL09  
 Data Date 01FEB04  
 Run Date 09FEB04 14:21



DRAFT

© Primavera Systems, Inc.

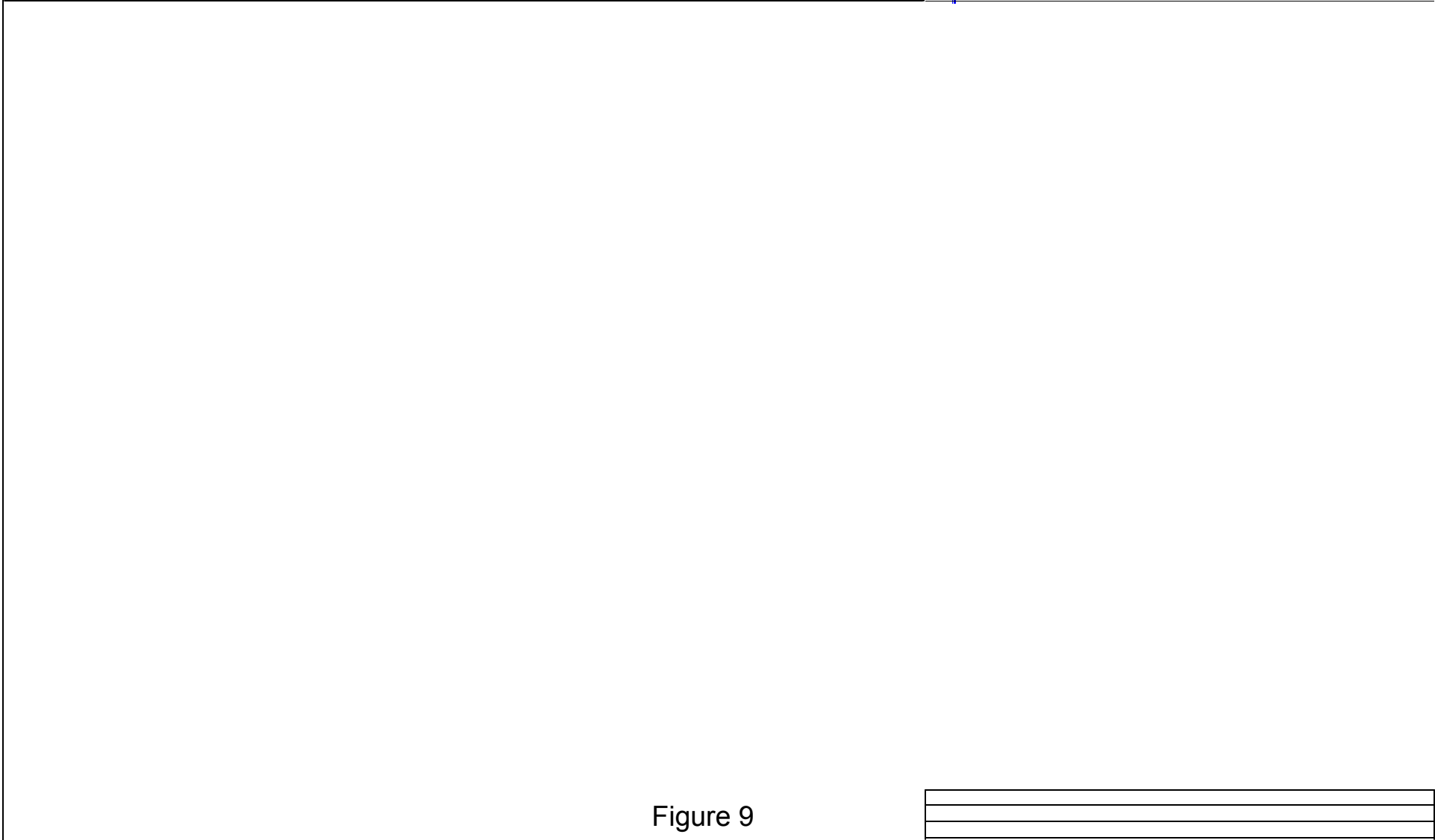
UB09

Sheet 12 of 13

Combined Schedule for the  
 Impact Area GW Study Program  
 as of 01FEB04

| Date | Revision | Checked | Approved |
|------|----------|---------|----------|
|      |          |         |          |
|      |          |         |          |
|      |          |         |          |

| Activity ID               | Activity Description                 | ENF MILE | ENF DATE | MILE MET | REM DUR | Anticipated Start | Anticipated Finish | 2004 |   |   | 2005 |   |   | 2006 |   |   |   |   |   |   |   |   |   |   |   |   |   |   |   |   |   |   |   |   |   |   |
|---------------------------|--------------------------------------|----------|----------|----------|---------|-------------------|--------------------|------|---|---|------|---|---|------|---|---|---|---|---|---|---|---|---|---|---|---|---|---|---|---|---|---|---|---|---|---|
|                           |                                      |          |          |          |         |                   |                    | D    | J | F | M    | A | M | J    | J | A | S | O | N | D | J | F | M | A | M | J | J | A | S | O | N | D | J | F | M | A |
| Groundwater Operable Unit |                                      |          |          |          |         |                   |                    |      |   |   |      |   |   |      |   |   |   |   |   |   |   |   |   |   |   |   |   |   |   |   |   |   |   |   |   |   |
| 32570                     | Final Decision Doc/ Response Summary |          |          |          | 0       |                   | 10FEB06            |      |   |   |      |   |   |      |   |   |   |   |   |   |   |   |   |   |   |   |   |   |   |   |   |   |   |   |   |   |



Start Date 29FEB00  
 Finish Date 31JUL09  
 Data Date 01FEB04  
 Run Date 09FEB04 14:21



**DRAFT**

**UB09** **Sheet 13 of 13**  
  
**Combined Schedule for the  
 Impact Area GW Study Program  
 as of 01FEB04**

| Date | Revision | Checked | Approved |
|------|----------|---------|----------|
|      |          |         |          |
|      |          |         |          |
|      |          |         |          |
|      |          |         |          |
|      |          |         |          |