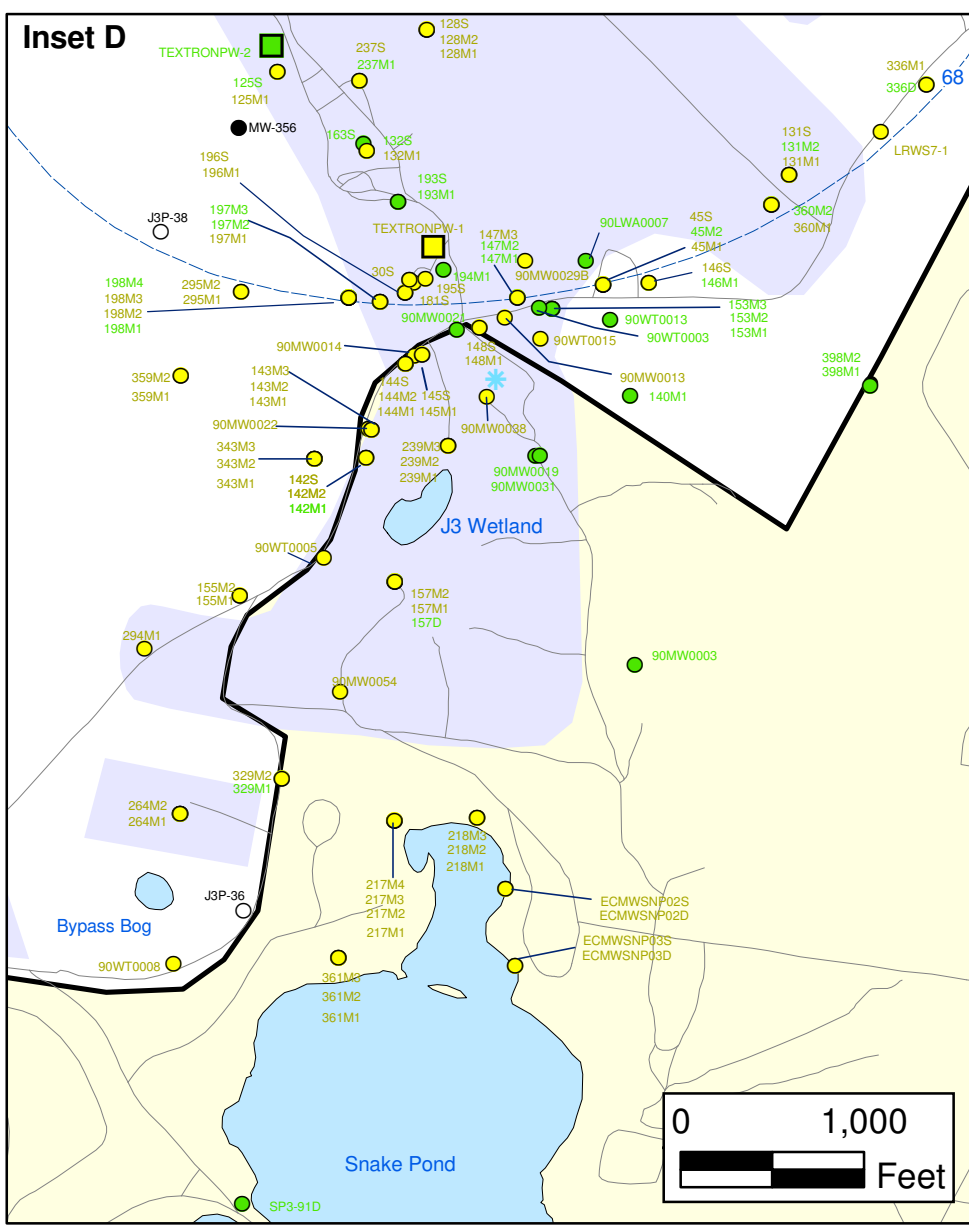
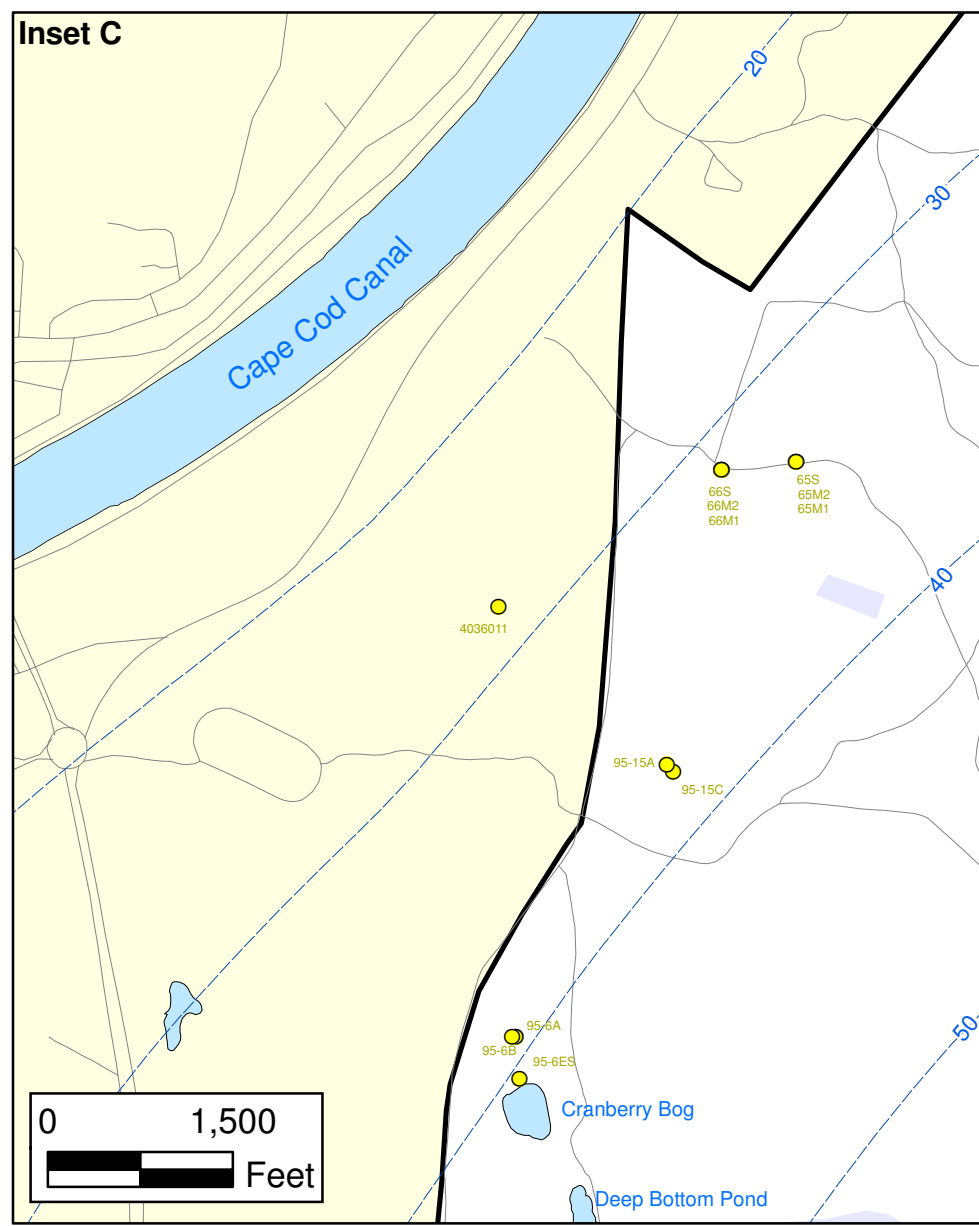
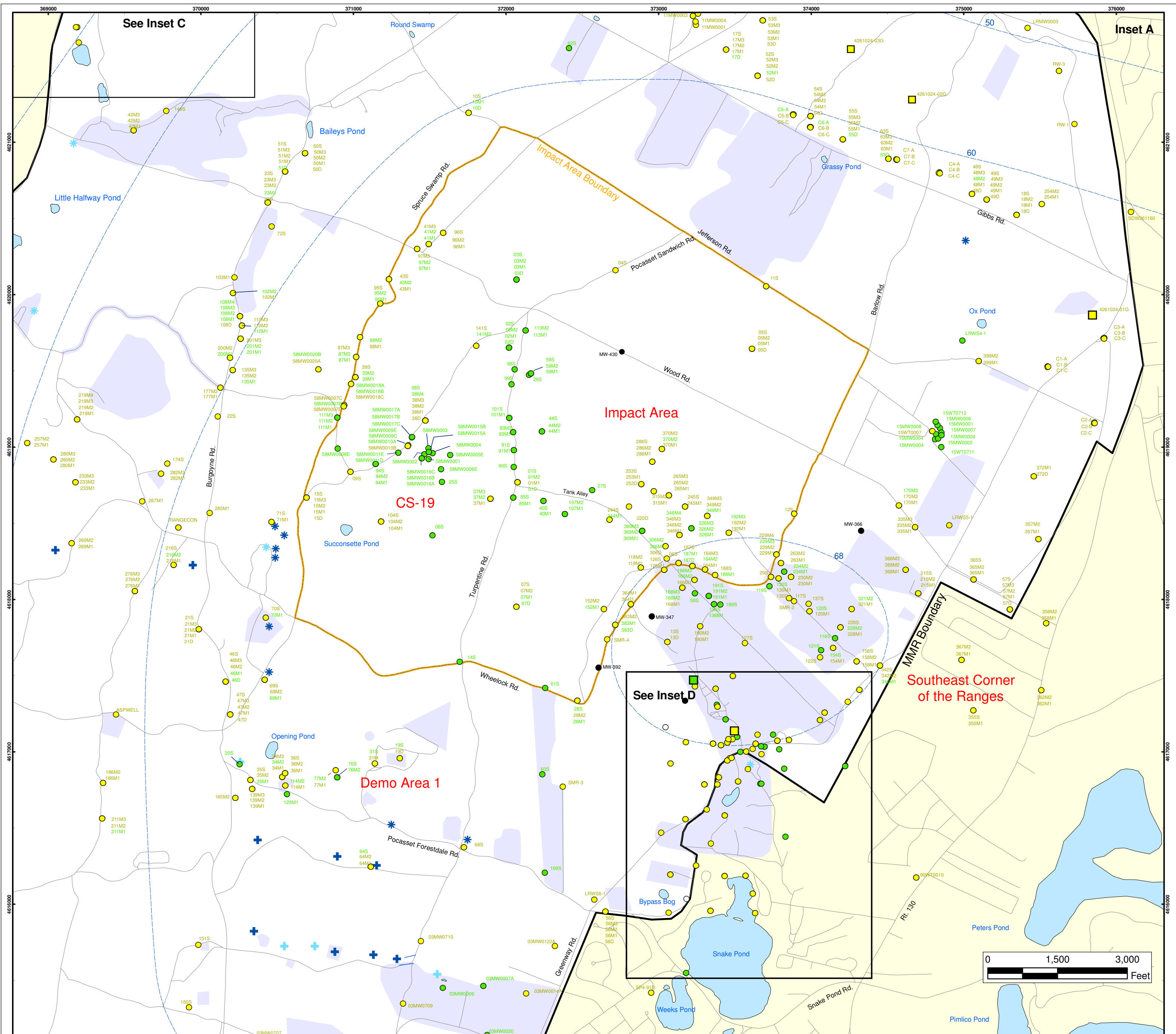


**Chloroform in Groundwater Compared to Maximum Contaminant Level/Health Advisories
 Validated Data as of 12/22/05**

FIGURE 4



Chloroform in Groundwater Compared to Maximum Contaminant Level/Health Advisories
Validated Data as of 12/22/05

- Validated Detection Less than Maximum Contaminant Level/Health Advisories
- Validated Non-Detect
- Data Pending
- Proposed Monitoring Well
- Military Range Areas
- + Current Gun Position
- * Current Mortar Position
- + Old Gun Position
- * Old Mortar Position
- Validated Non-Detect Water Supply Well
- Validated Detection Less than Maximum Contaminant Level/Health Advisories Water Supply Well
- Water Table Contour (Feet NGVD), AMEC, September 2003

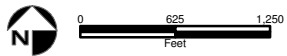
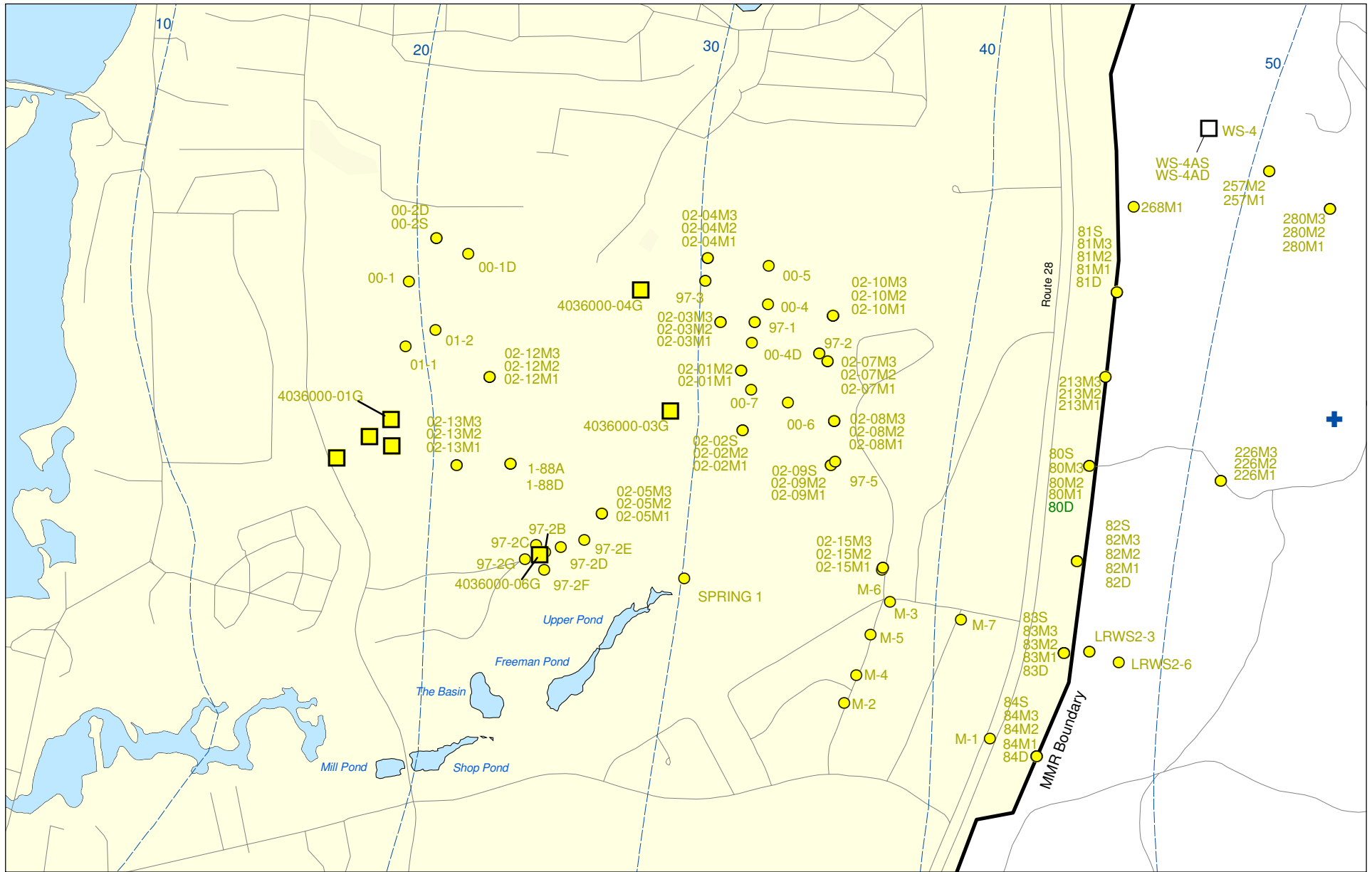
Impact Area Groundwater Study Program

AMEC Earth & Environmental, Inc.
Westford, Massachusetts

Inset Map

FIGURE 4

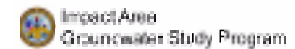
Sources & Notes
Base map data from US Geological Survey 7 1/2 minute Topographic Maps.
Source: Office of Geographic and Environmental Information (MassGIS) Commonwealth of Massachusetts Executive Office of Environmental Affairs



Sources & Notes:
 Base map data from US Geological Survey
 7 1/2 minute Topographic maps.
 Source: Office of Geographic and
 Environmental Information (MassGIS)
 Commonwealth of Massachusetts
 Executive Office of Environmental Affairs

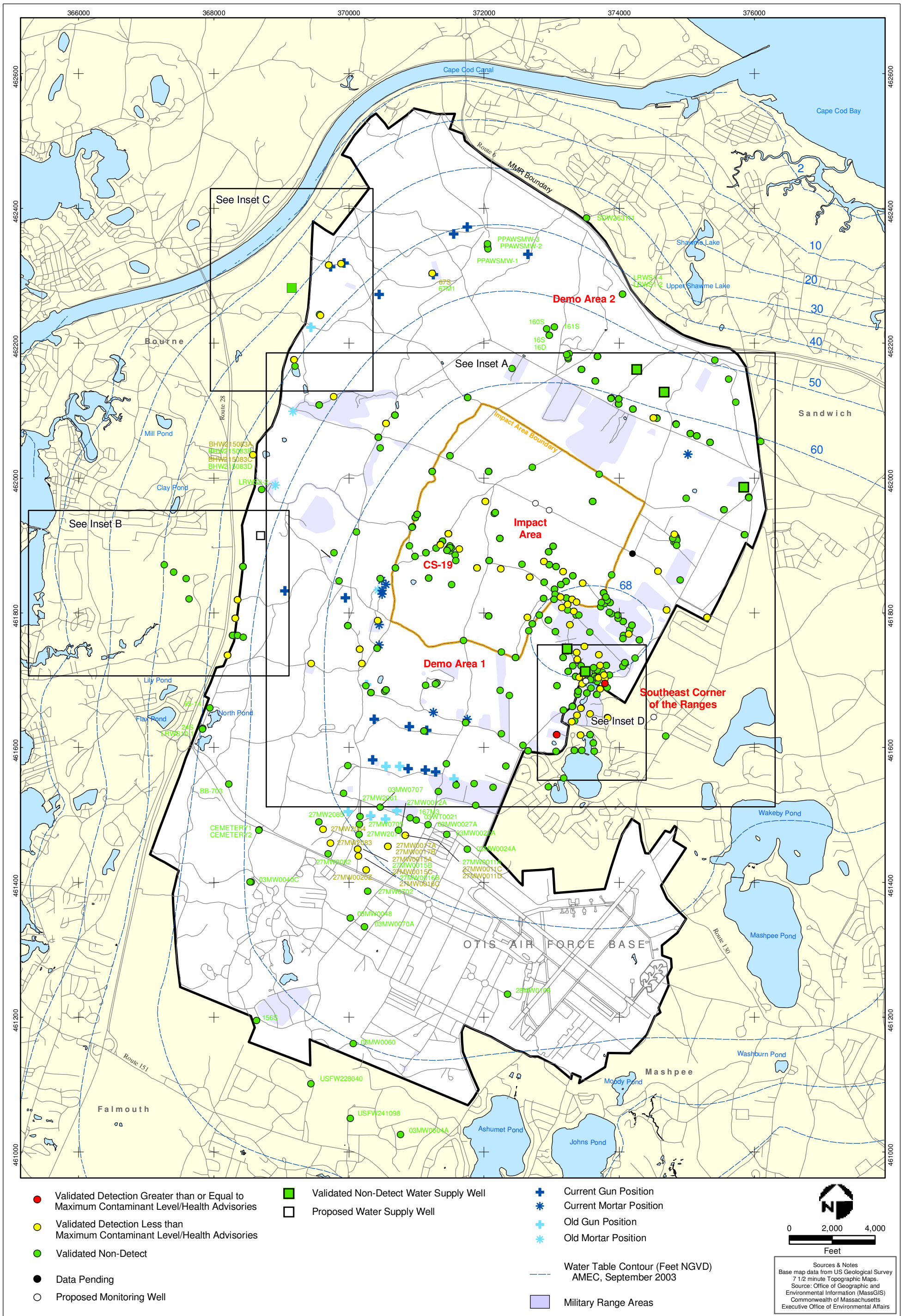
- Validated Detection Less than Maximum Contaminant Level/Health Advisories
- Validated Non-Detect
- + Current Gun Position
- Validated Detection Less than the Maximum Contaminant Level/Health Advisories
- Proposed Water Supply Well
- Water Table Contour (Feet NGVD)
AMEC, September 2003

Chloroform in Groundwater Compared to Maximum Contaminant Level/Health Advisories
 Validated Data as of 12/22/05



AMEC Earth & Environmental, Inc.
 Westford, Massachusetts

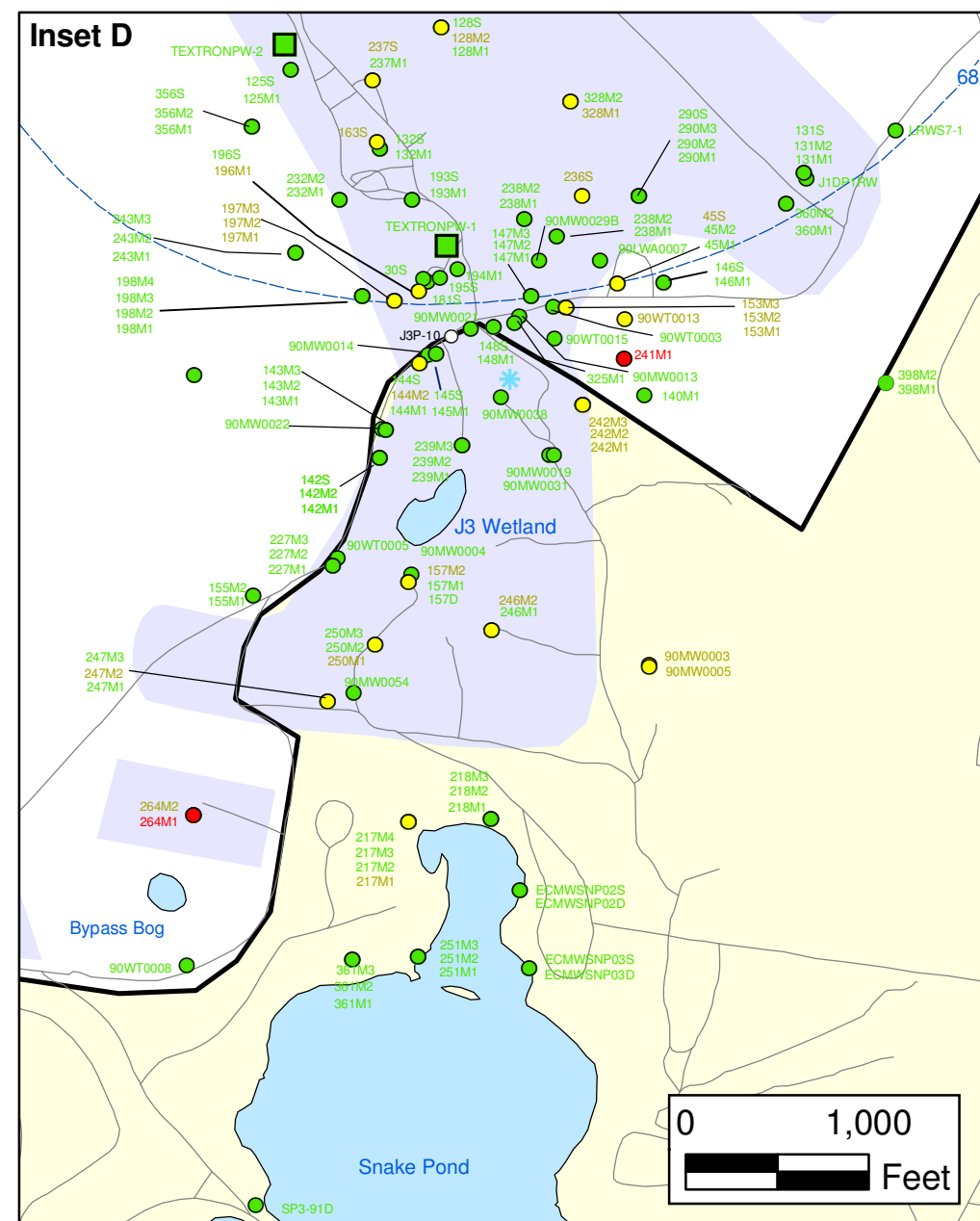
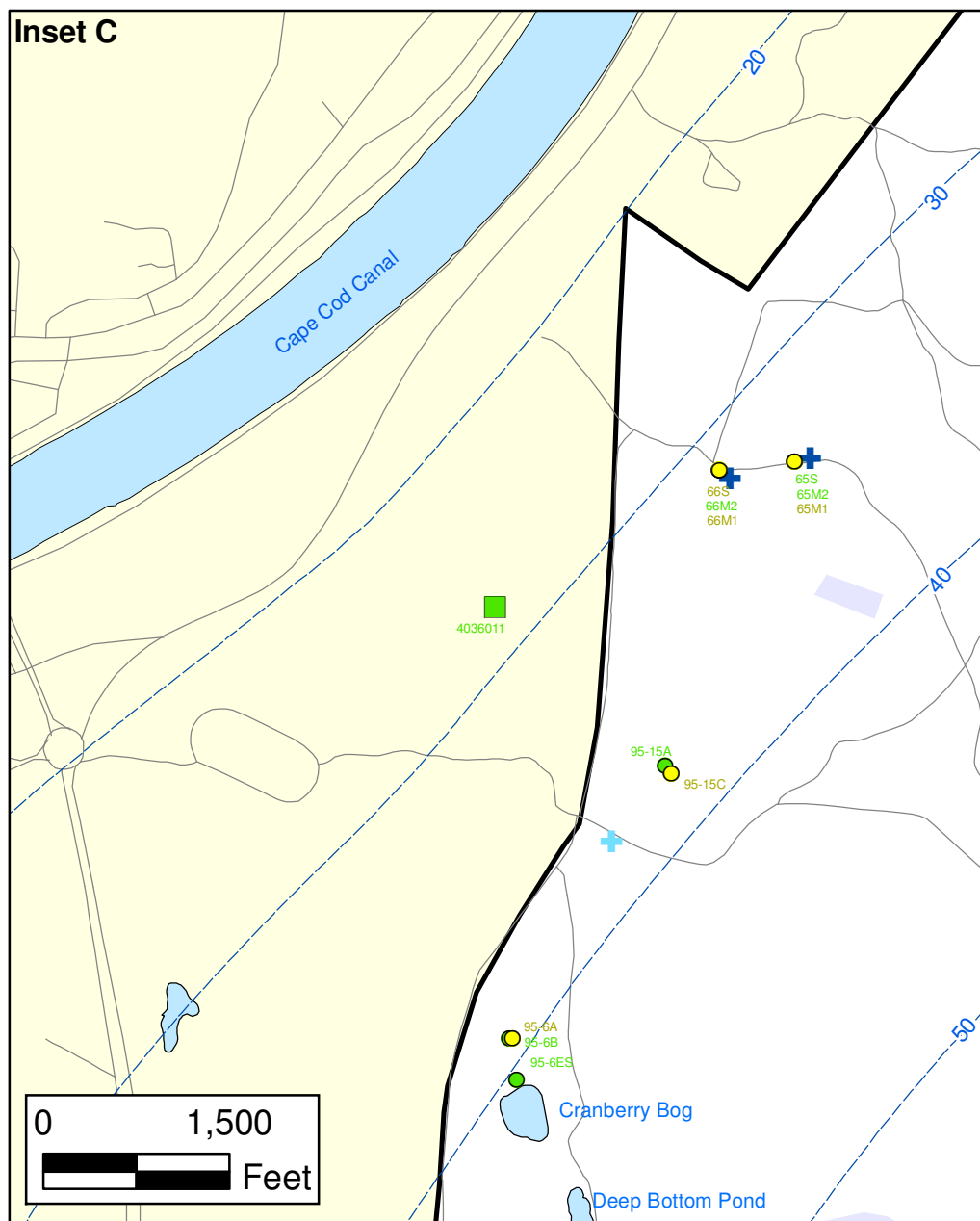
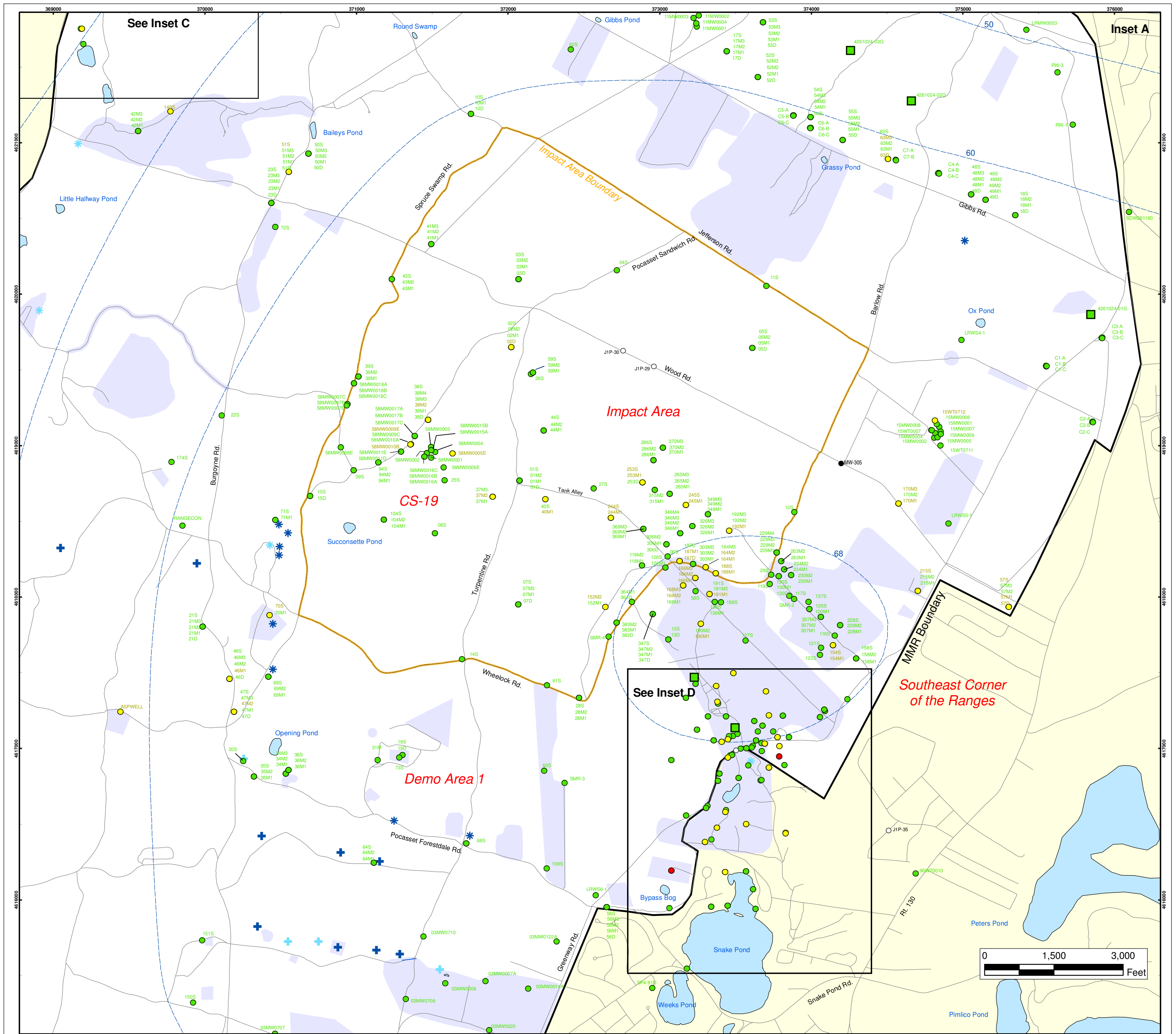
FIGURE
Inset Map B 4



Semi-Volatile Organic Compounds (Excluding BEHP) in Groundwater Compared to Maximum Contaminant Level/Health Advisories
Validated Data as of 12/22/05

AMEC Earth & Environmental, Inc.
 Westford, Massachusetts

FIGURE
5



Semi-Volatile Organic Compounds (Excluding BEHP) in Groundwater Compared to Maximum Contaminant Level/Health Advisories Validated Data as of 12/22/05

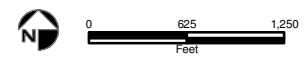
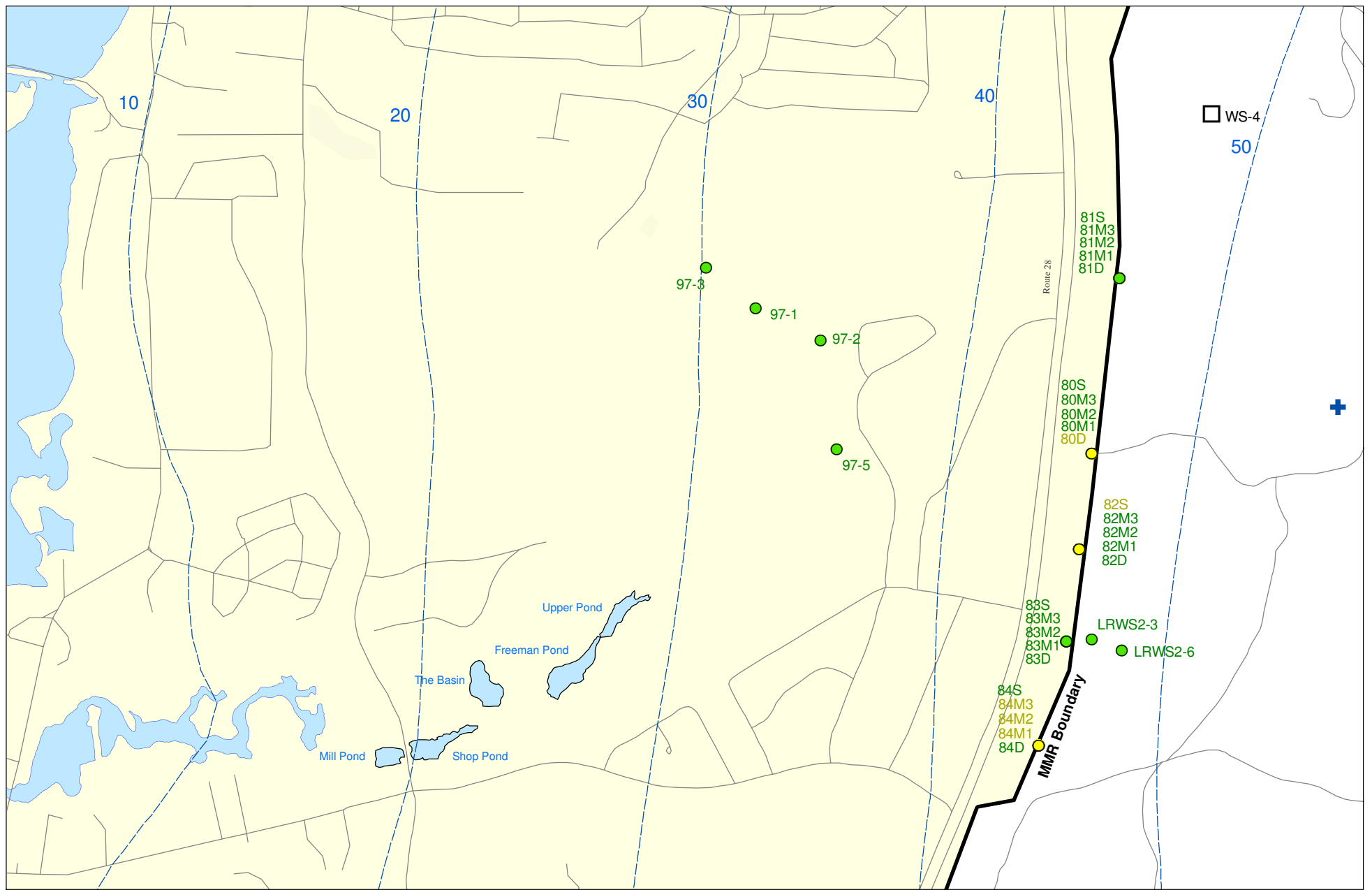
- Validated Detection Greater than or Equal to Maximum Contaminant Level/Health Advisories
- Validated Detection Less than Maximum Contaminant Level/Health Advisories
- Validated Non-Detect
- Data Pending
- Proposed Monitoring Well
- Military Range Areas
- + Current Gun Position
- * Current Mortar Position
- + Old Gun Position
- * Old Mortar Position
- Validated Non-Detect Water Supply Well
- Water Table Contour (Feet NGVD), AMEC, September 2003

Impact Area Groundwater Study Program

AMEC Earth & Environmental, Inc.
Westford, Massachusetts

FIGURE 5

Inset Map



Sources & Notes:
 Base map data from US Geological Survey
 7 1/2 minute Topographic maps.
 Source: Office of Geographic and
 Environmental Information (MassGIS)
 Commonwealth of Massachusetts
 Executive Office of Environmental Affairs

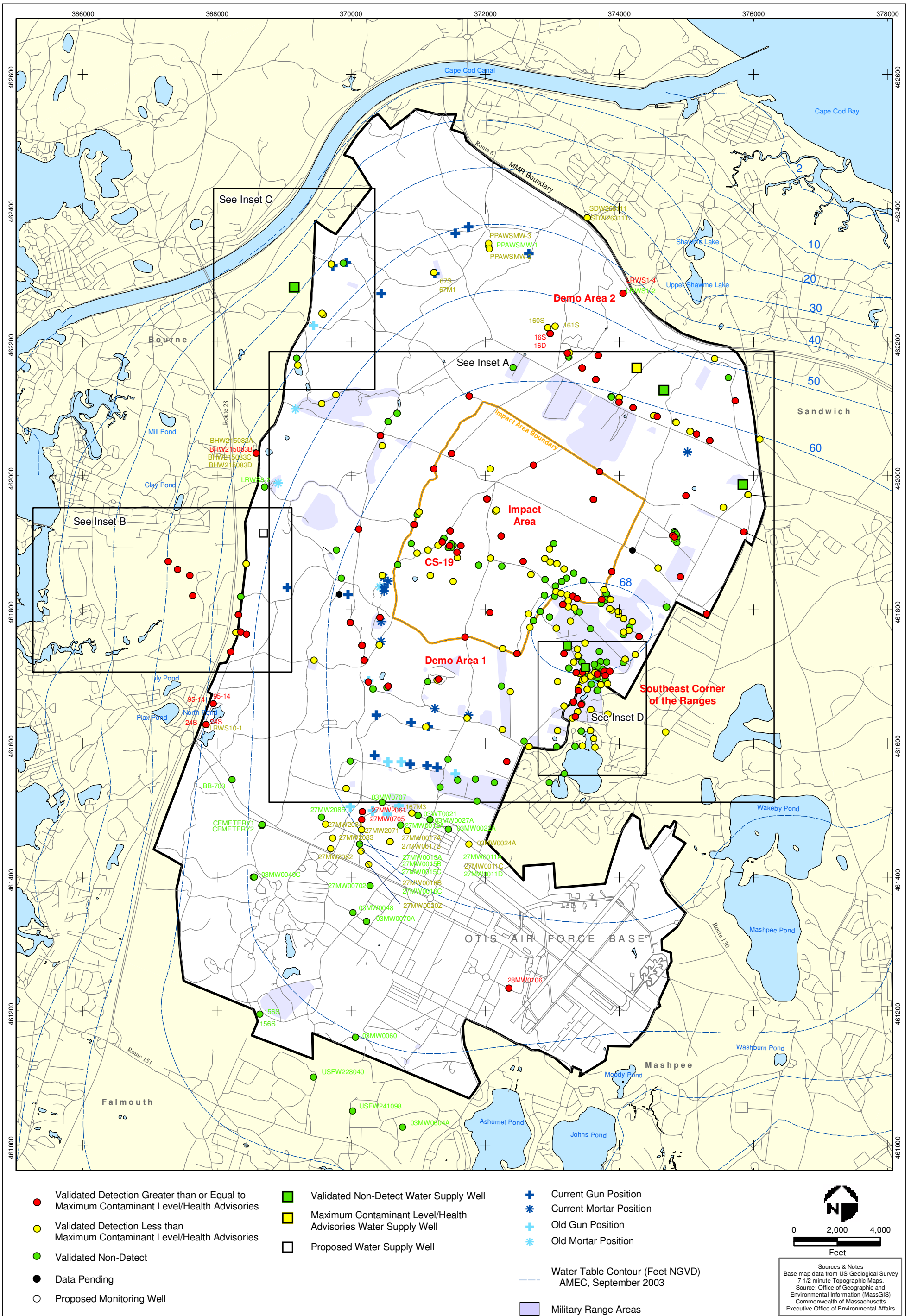
- Validated Detection Less than Maximum Contaminant Level/Health Advisories
- Validated Non-Detect
- Proposed Water Supply Well
- + Current Gun Position
- Water Table Contour (Feet NGVD), AMEC, September 2003

Semi-Volatile Organic Compounds (Excluding BEHP) in Groundwater Compared to Maximum Contaminant Level/Health Advisories Validated Data as of 12/22/05



AMEC Earth & Environmental, Inc.
 Westford, Massachusetts

Inset Map B 5 **FIGURE**

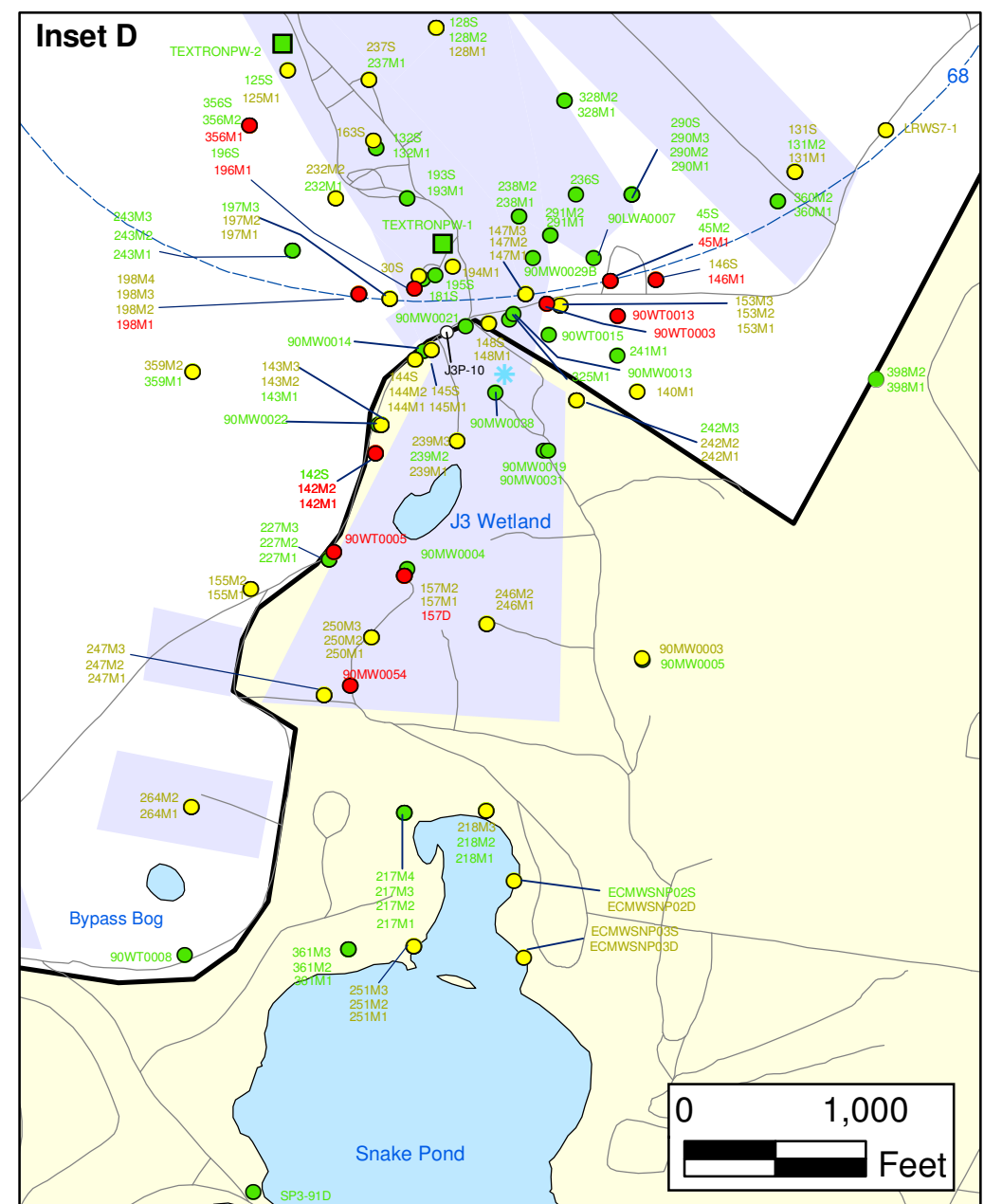
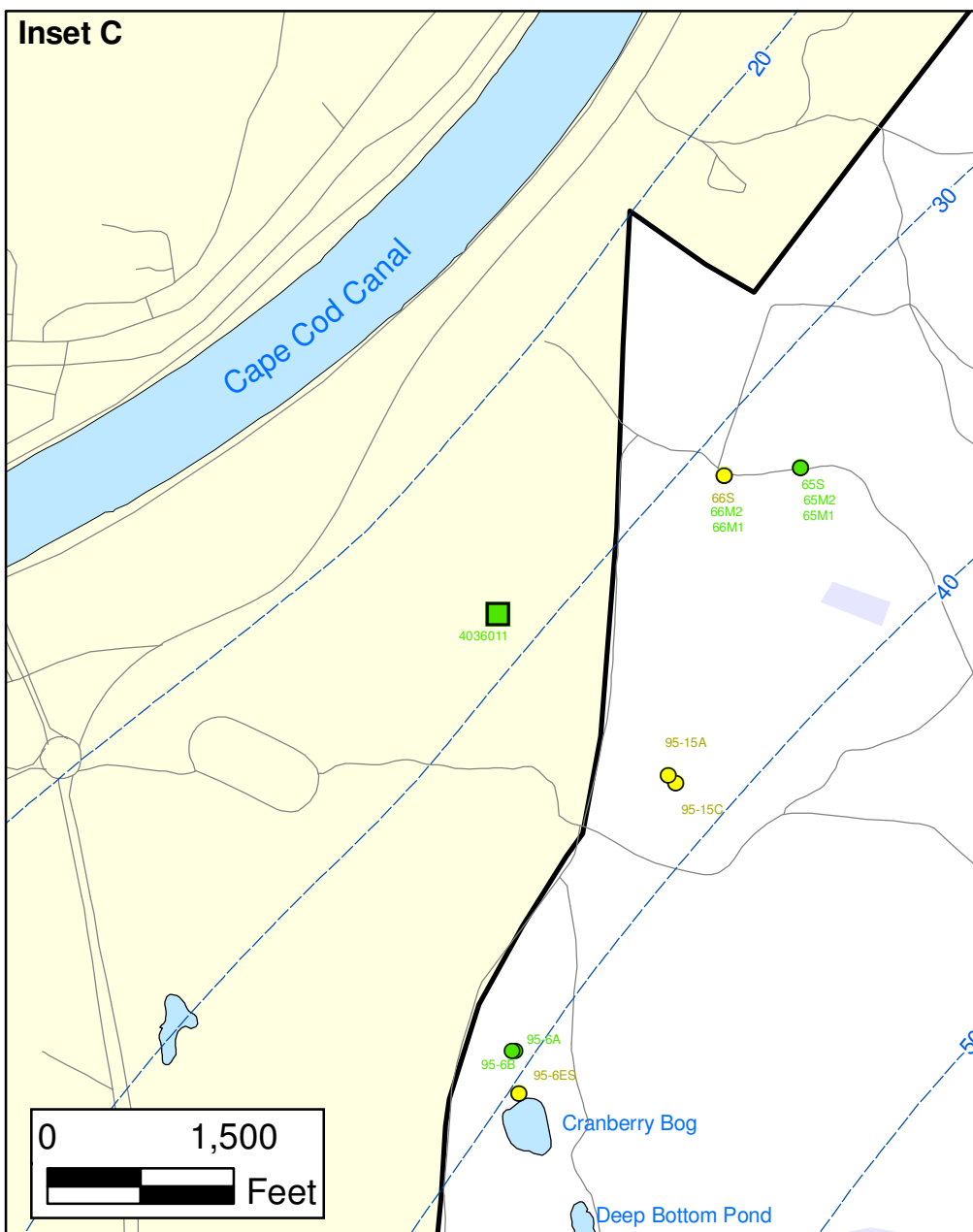
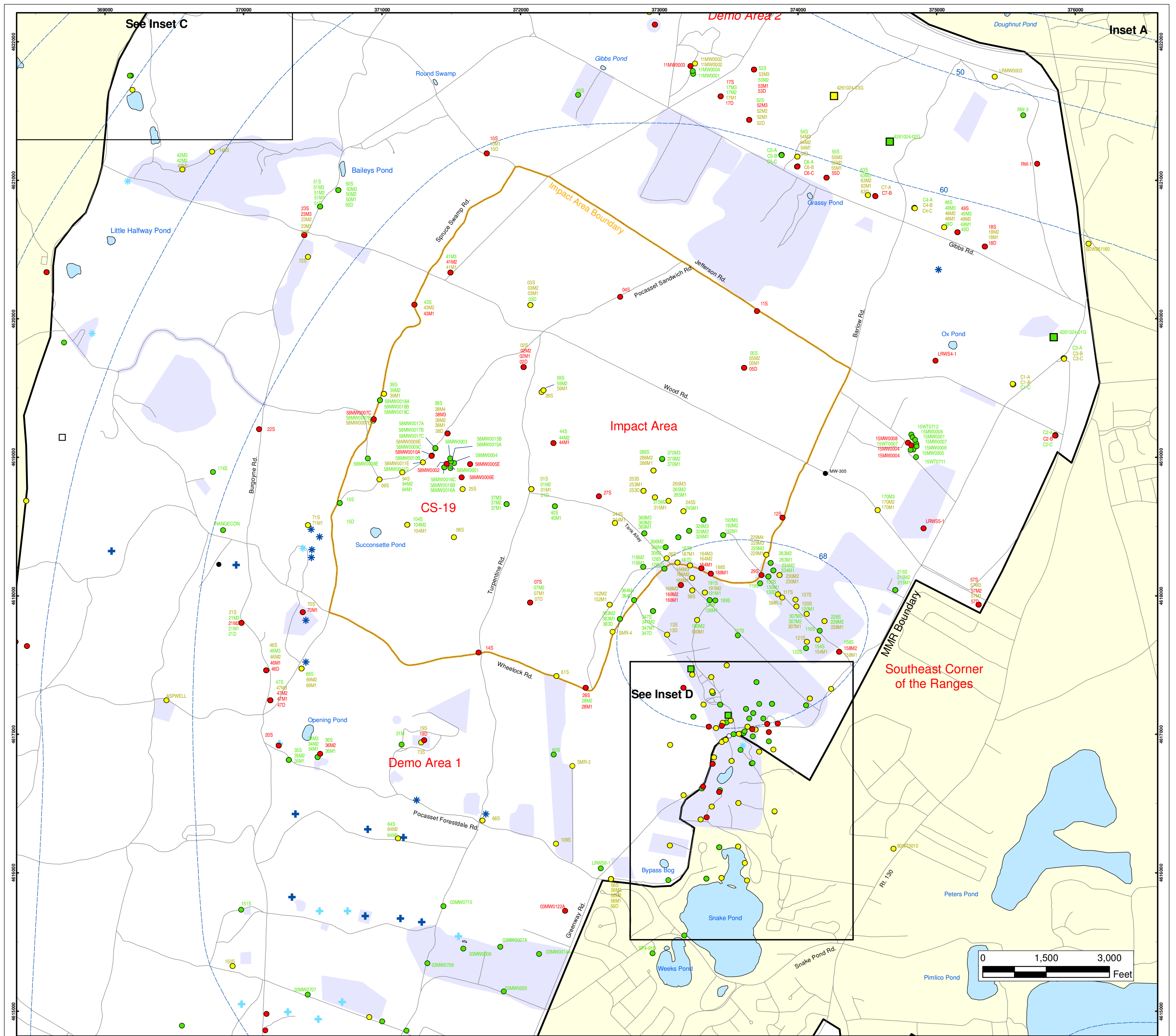


**BEHP in Groundwater
 Compared to a 4 ppb Concentration
 Validated Data as of 12/22/05**

**FIGURE
 6**

AMEC Earth & Environmental, Inc.
 Westford, Massachusetts

J:\GIS\Jan2006\Monthly\perch_overall.pdf
 G:\MMR_COE\Work2006\Monthly\Jan2006\6_BEHP\BEHP_overall.mxd
 January 1, 2006 DWN: JBB ABF CHKD: MW



BEHP in Groundwater Compared to Maximum Contaminant Level/Health Advisories Validated Data as of 12/22/05

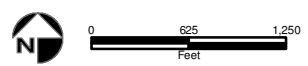
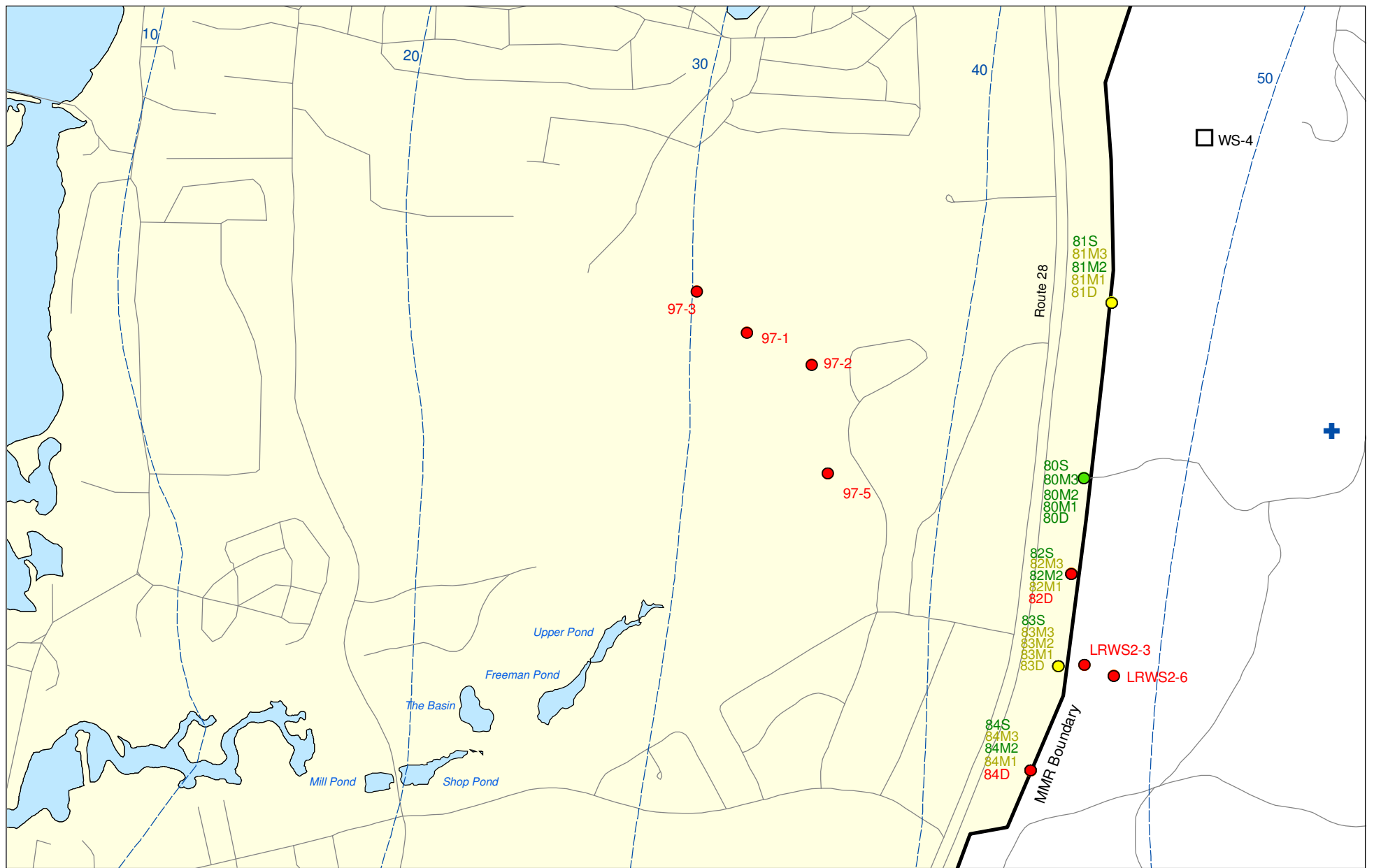
- Validated Detection Greater than or Equal to Maximum Contaminant Level/Health Advisories
- Validated Detection Less than Maximum Contaminant Level/Health Advisories
- Validated Non-Detect
- Data Pending
- Proposed Monitoring Well
- Military Ranges
- + Current Gun Position
- * Current Mortar Position
- + Old Gun Position
- * Old Mortar Position
- Validated Non-Detect Water Supply Well
- Water Table Contour (Feet NGVD), AMEC, September 2003

Impact Area Groundwater Study Program

Sources & Notes
 Base map data from US Geological Survey 7 1/2 minute Topographic Maps.
 Source: Office of Geographic and Environmental Information (MassGIS)
 Commonwealth of Massachusetts
 Executive Office of Environmental Affairs

AMEC Earth & Environmental, Inc.
Westford, Massachusetts

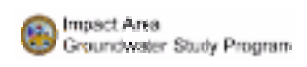
Inset Map
FIGURE 6



Sources & Notes:
 Base map data from US Geological Survey
 7 1/2 minute Topographic maps.
 Source: Office of Geographic and
 Environmental Information (MassGIS)
 Commonwealth of Massachusetts
 Executive Office of Environmental Affairs

- Validated Detection Greater than or Equal to Maximum Contaminant Level/Health Advisories
- Validated Detection Less than Maximum Contaminant Level/Health Advisories
- Validated Non-Detect
- ⊕ Current Gun Position
- Proposed Water Supply Well
- Water Table Contour (Feet NGVD)
 AMEC, September 2003

BEHP in Groundwater Compared to Maximum Contaminant Level/Health Advisories
 Validated Data as of 12/22/05



AMEC Earth & Environmental, Inc.
 Westford, Massachusetts

FIGURE
 Inset Map B **6**