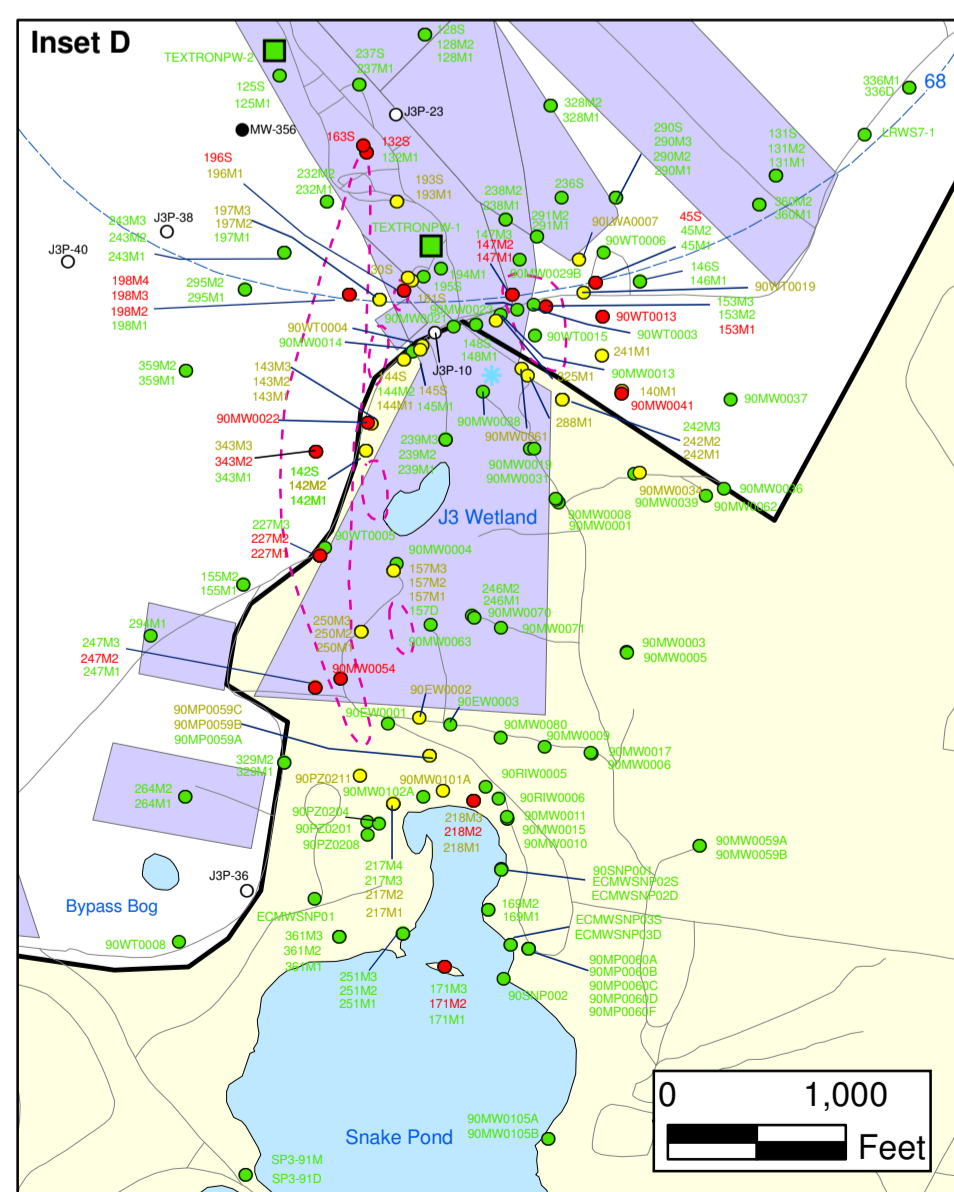
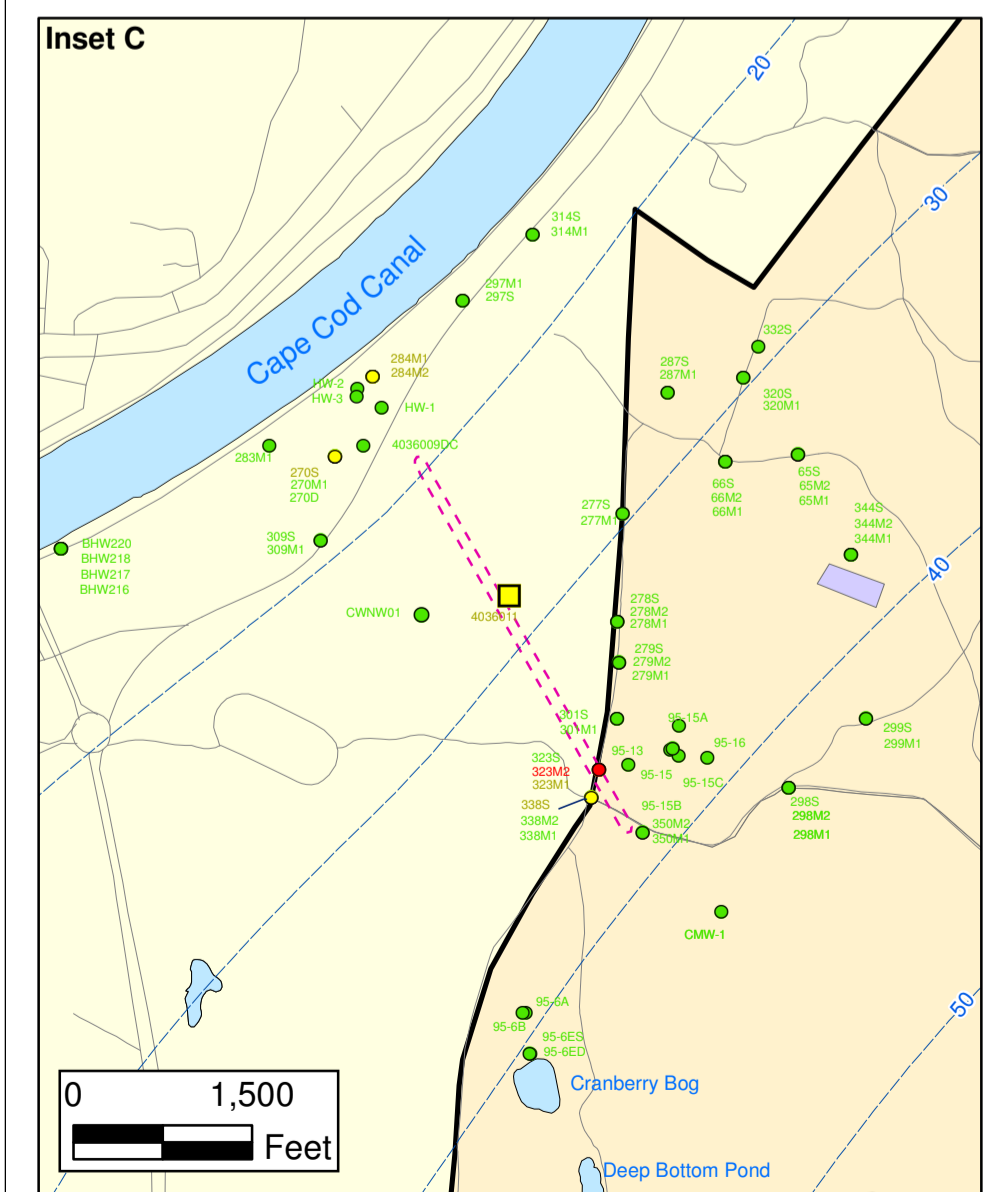
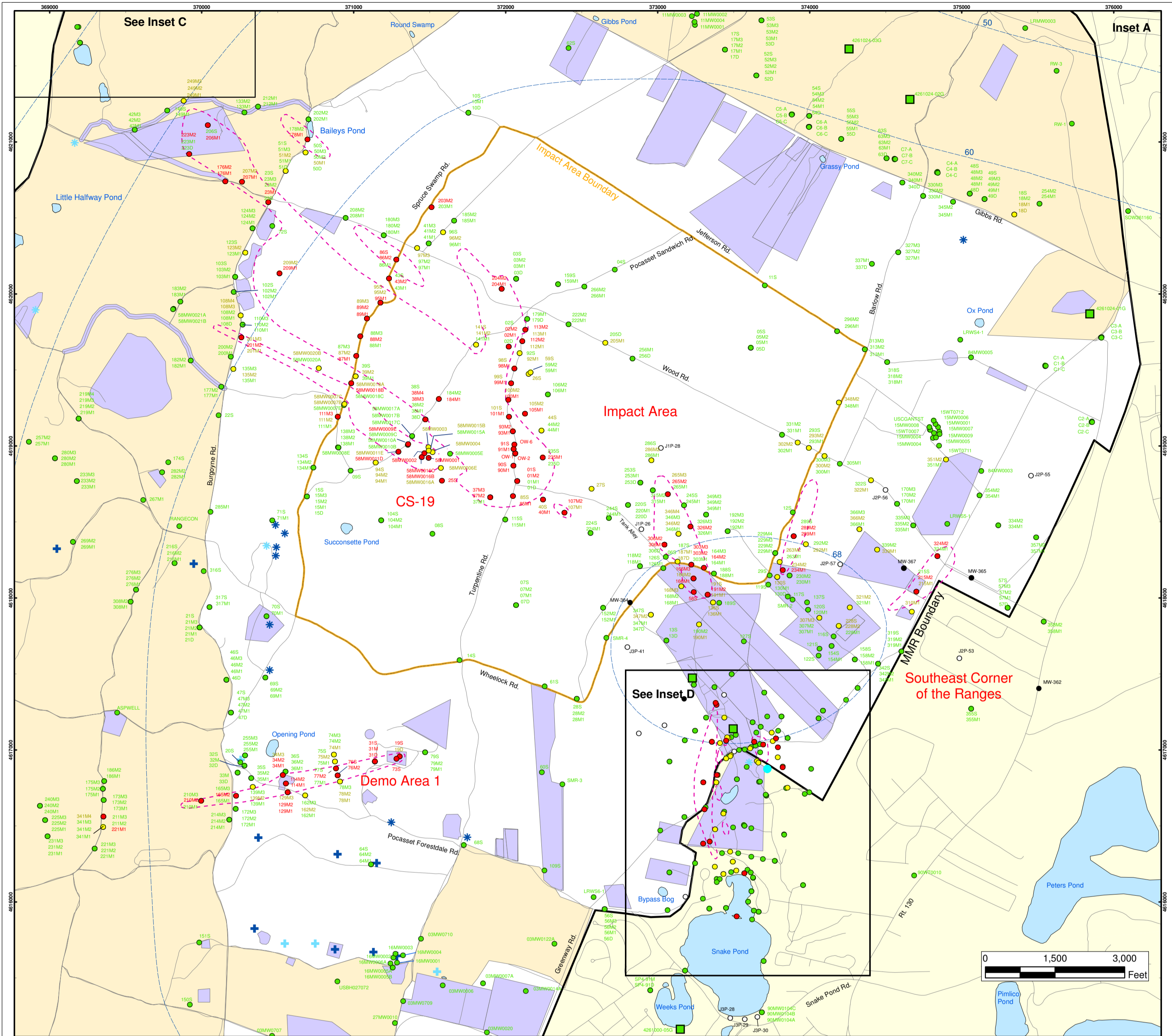


AMEC Earth & Environmental, Inc.
Westford, Massachusetts

Explosives in Groundwater Compared to Maximum Contaminant Level/Health Advisories
Validated Data as of 04/29/05

FIGURE
1



Explosives in Groundwater Compared to Maximum Contaminant Level/Health Advisories Validated Data as of 04/29/05

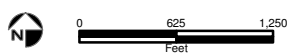
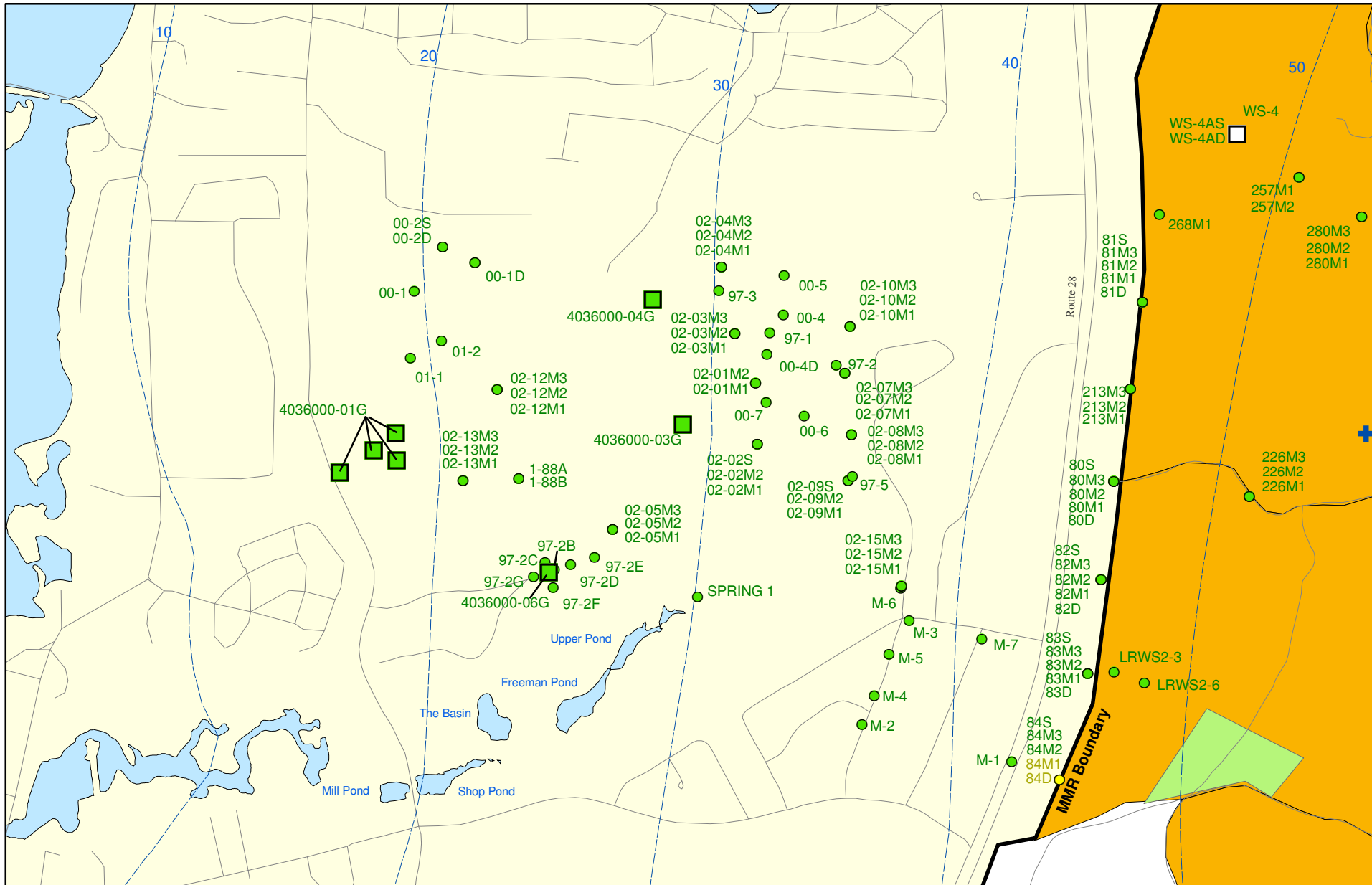
- Validated Detection Greater than or Equal to Maximum Contaminant Level/Health Advisories
- Validated Detection Less than Maximum Contaminant Level/Health Advisories
- Validated Non-Detect
- No Data Available
- Proposed Monitoring Well
- Military Training Areas
- Military Ranges
- ⊕ Current Gun Position
- ⊕ Current Mortar Position
- ⊕ Old Gun Position
- ⊕ Old Mortar Position
- Validated Non-Detect Water Supply Well
- Validated Detection Less than Maximum Contaminant Level/Health Advisories Water Supply Well
- Water Table Contour (Feet NGVD), AMEC, September 2003
- Area of RDX Detections Greater than 2.0 ppb
- Central Impact Area 7/15/03
- Demo 1 12/21/04
- SE Ranges (Jacobs Eng.) 10/21/04
- NWC 1/27/05

Impact Area Groundwater Study Program

AMEC Earth & Environmental, Inc.
Westford, Massachusetts

Sources & Notes
Base map data from US Geological Survey
7 1/2 minute Topographic Maps
Source: Office of Geographic and Environmental Information (MassGIS)
Commonwealth of Massachusetts
Executive Office of Environmental Affairs

FIGURE 1
Inset Map



Sources & Notes:
 Base map data from US Geological Survey
 7 1/2 minute Topographic maps.
 Source: Office of Geographic and
 Environmental Information (MassGIS)
 Commonwealth of Massachusetts
 Executive Office of Environmental Affairs

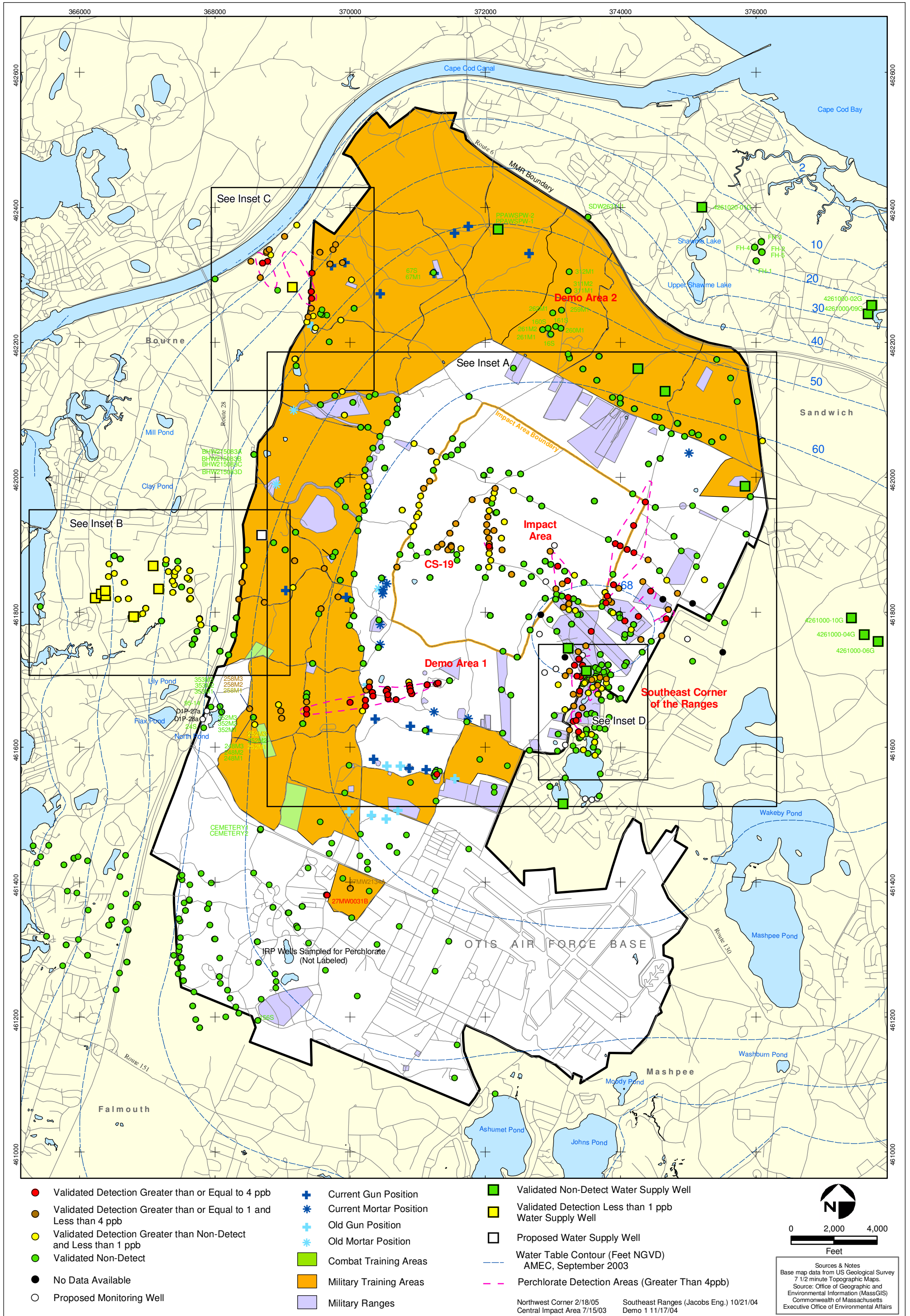
- Validated Detection Less than Maximum Contaminant Level/Health Advisories
- Validated Non-Detect
- + Current Gun Position
- Validated Non-Detect Water Supply Well
- Proposed Water Supply Well
- Combat Training Areas
- Military Training Areas
- Water Table Contour (Feet NGVD)
AMEC, September 2003

Explosives in Groundwater Compared to Maximum Contaminant Level/Health Advisories Validated Data as of 04/29/05



AMEC Earth & Environmental, Inc.
 Westford, Massachusetts

FIGURE
Inset Map B 1

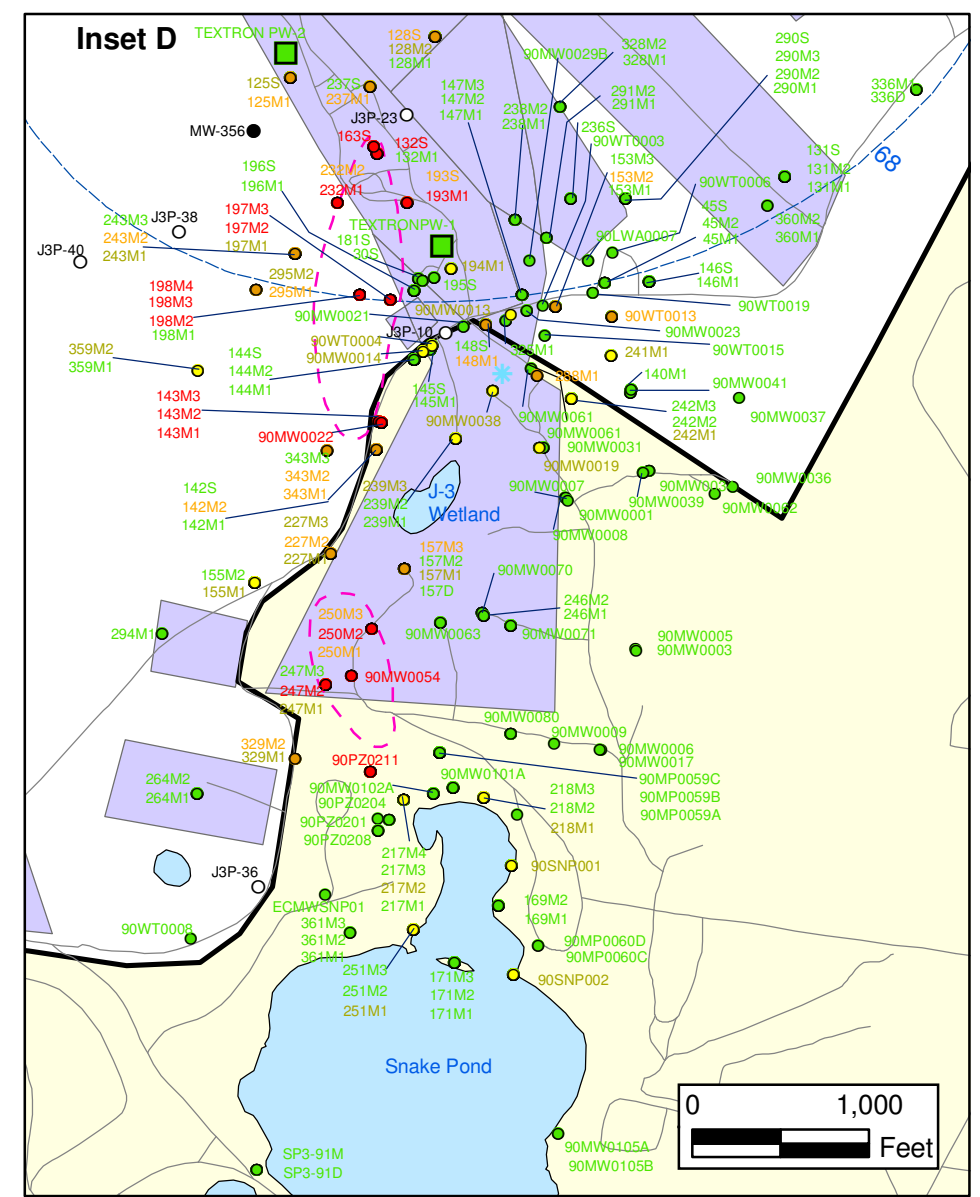
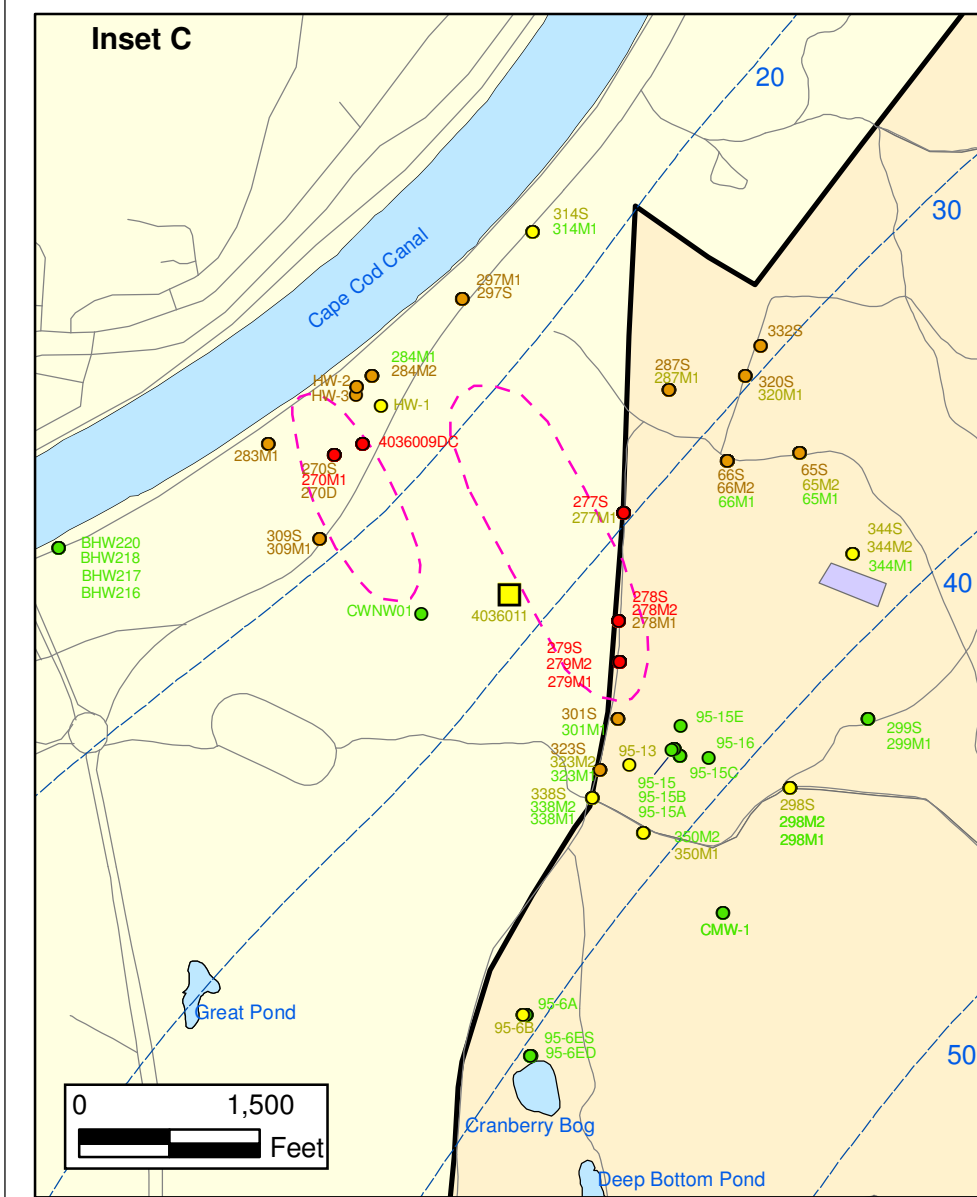
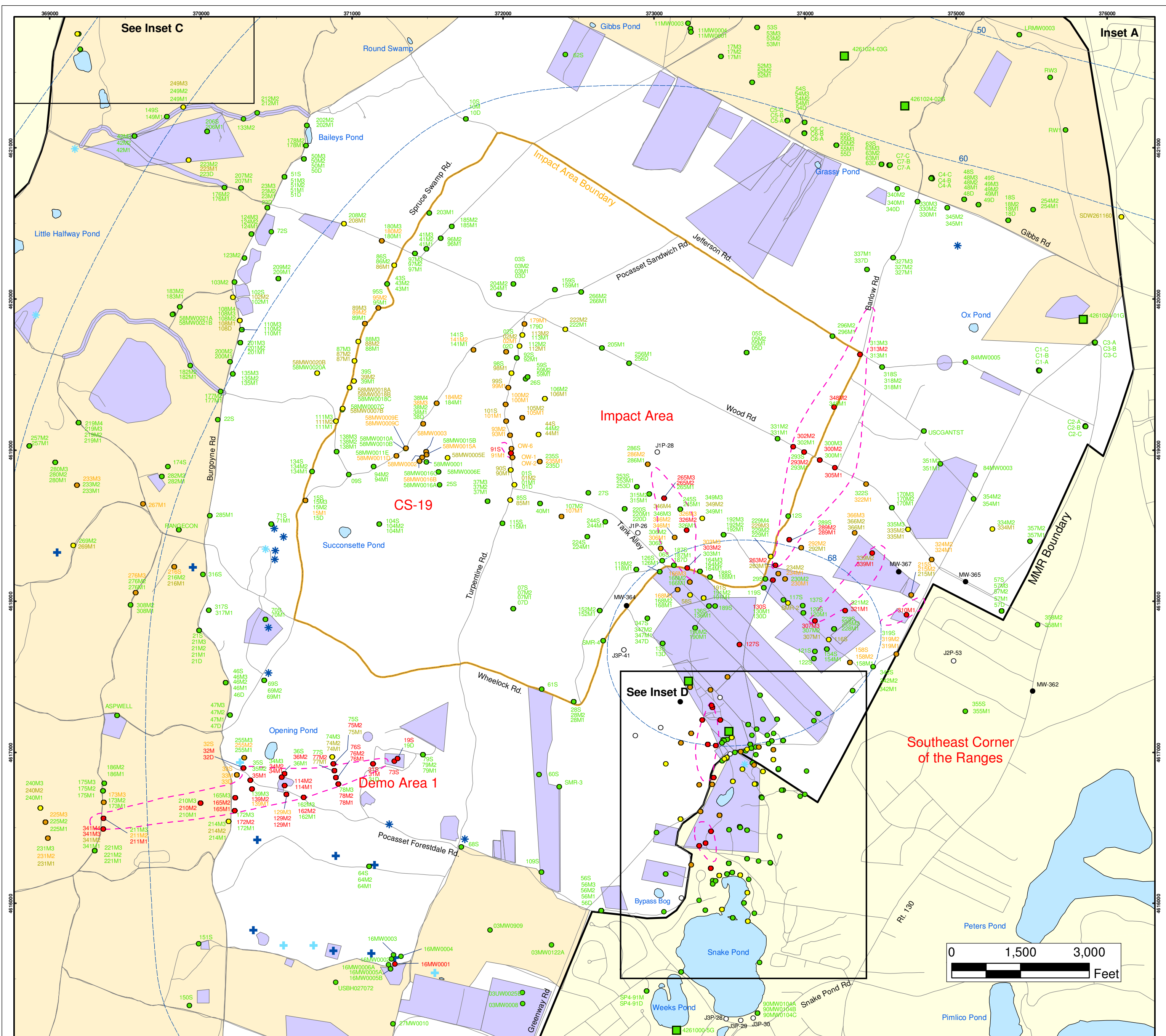


DRAFT
 AMEC Earth & Environmental, Inc.
 Westford, Massachusetts

**Perchlorate in Groundwater
 Compared to a 4 ppb Concentration
 Validated Data as of 04/29/05**

FIGURE

8



Perchlorate in Groundwater Compared to a 4 PPB Concentration Validated Data as of 04/29/05

- Validated Detection Greater than or Equal to 4 ppb
- Validated Detection Greater than or Equal to 1 and Less than 4 ppb
- Validated Detection Less than 1 ppb
- Validated Non-Detect
- No Data Available
- Proposed Monitoring Well
- Military Training Areas
- Military Ranges
- + Current Gun Position
- * Current Mortar Position
- + Old Gun Position
- * Old Mortar Position
- Validated Non-Detect Water Supply Well
- Validated Detection Less Than 1 ppb Water Supply Well
- Water Table Contour (Feet NGVD), AMEC, September 2003
- Perchlorate Detection Areas Greater than 4ppb*

*Southeast Ranges 10/21/04; Central Impact Area 7/15/03; Demo 1 11/17/04; NorthWest Corner 2/18/05

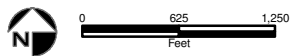
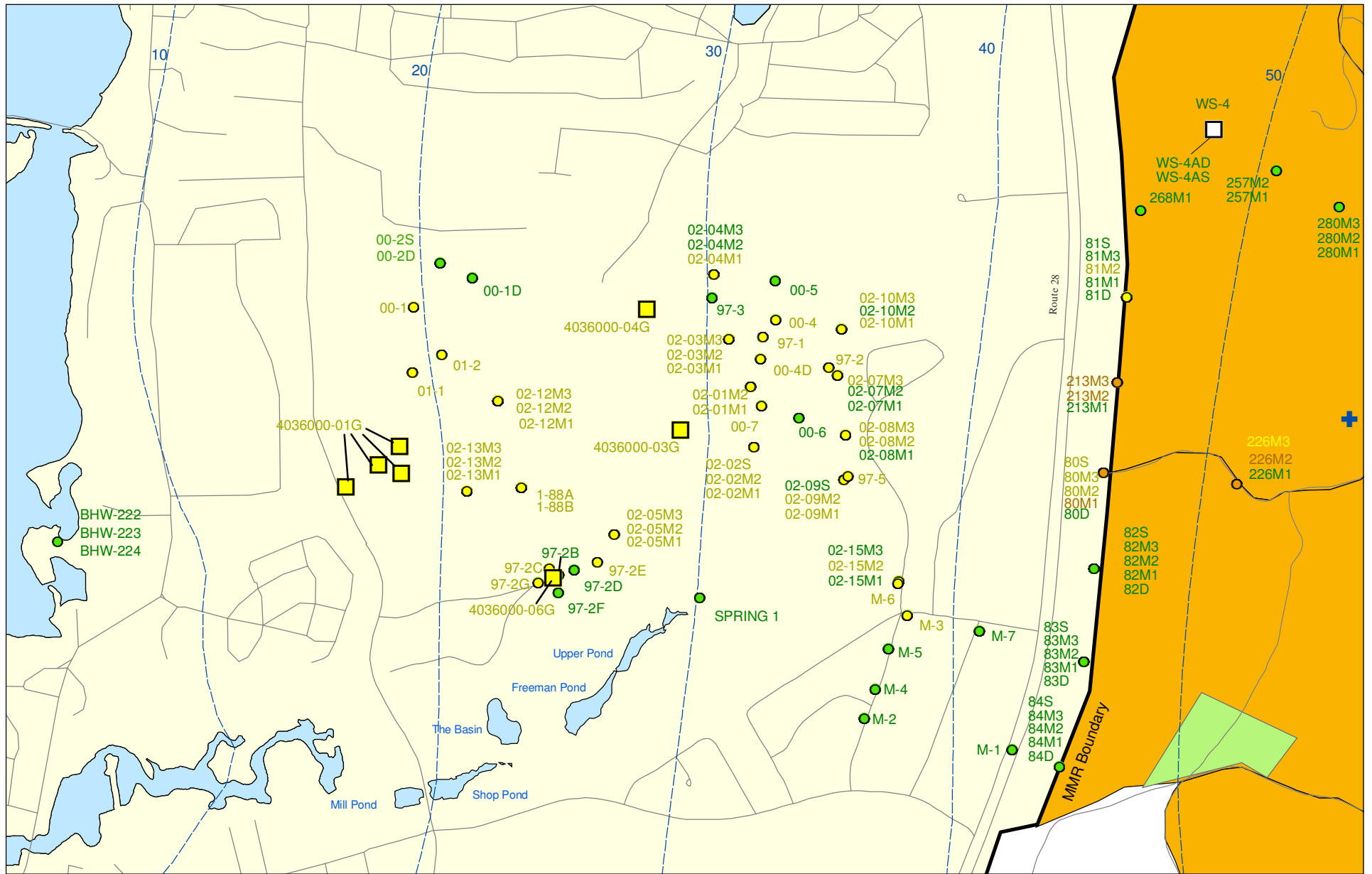
**Impact Area
Groundwater Study Program**

DRAFT

AMEC Earth & Environmental, Inc.
Westford, Massachusetts

FIGURE
8

Inset Map



Sources & Notes:
 Base map data from US Geological Survey
 7 1/2 minute Topographic maps.
 Source: Office of Geographic and
 Environmental Information (MassGIS)
 Commonwealth of Massachusetts
 Executive Office of Environmental Affairs

- Validated Detection Greater than or Equal to 1 and Less than 4 ppb
- Validated Detection Greater than Non-Detect and Less than 1 ppb
- Validated Non-Detect
- + Current Gun Position

- Validated Detection Less than 1 ppb Water Supply Well
- Proposed Water Supply Well
- Combat Training Areas
- Military Training Areas
- Water Table Contour (Feet NGVD)
AMEC, September 2003

**Perchlorate in Groundwater
 Compared to a 4 ppb Concentration
 Validated Data as of 04/29/05**

Impact Area
 Groundwater Study Program

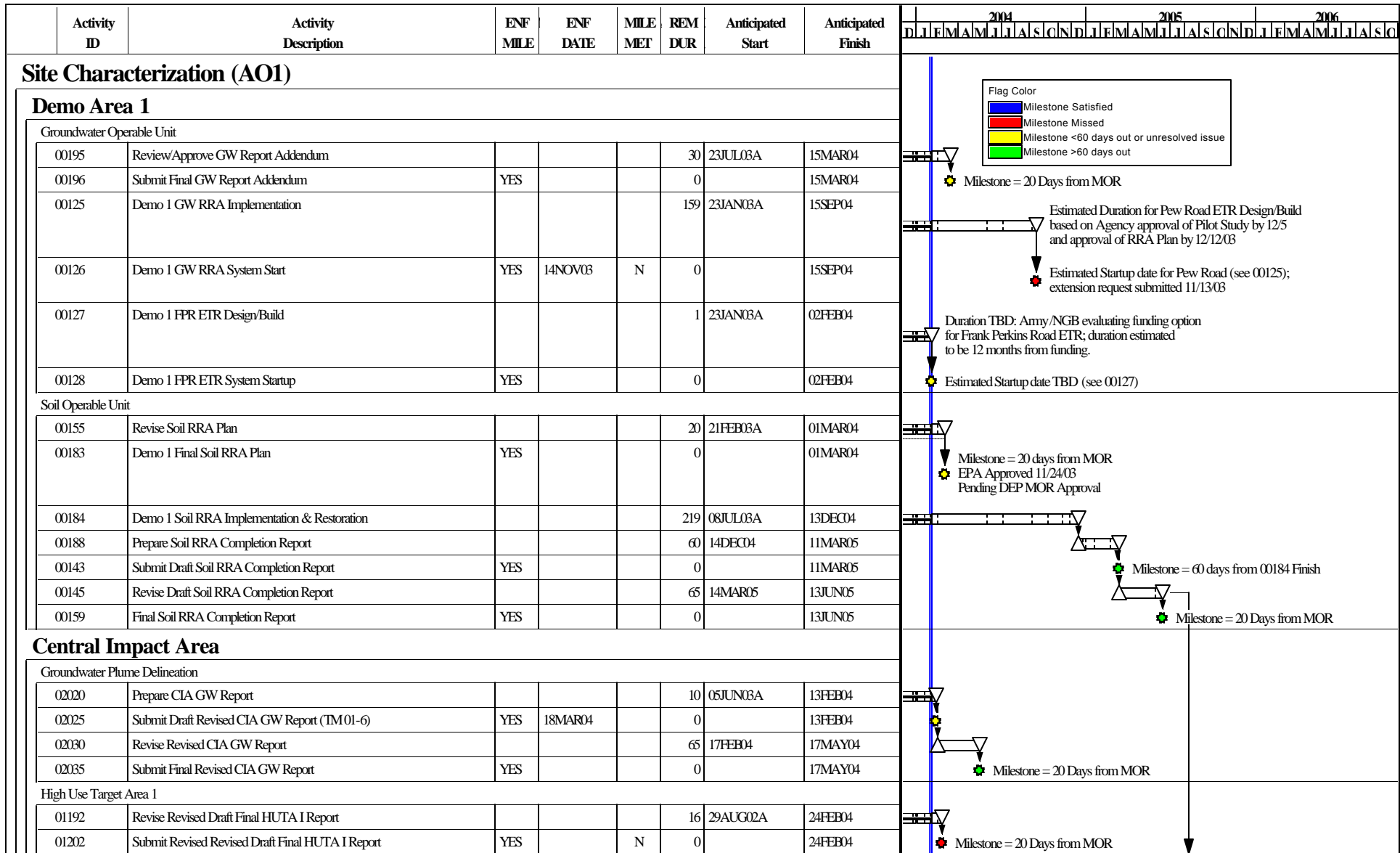


Figure 9

Start Date 29FEB00
 Finish Date 31JUL09
 Data Date 01FEB04
 Run Date 09FEB04 14:21



DRAFT

UB09

Sheet 1 of 13

Combined Schedule for the
 Impact Area GW Study Program
 as of 01FEB04

| Date | Revision | Checked | Approved |
|------|----------|---------|----------|
| | | | |
| | | | |
| | | | |

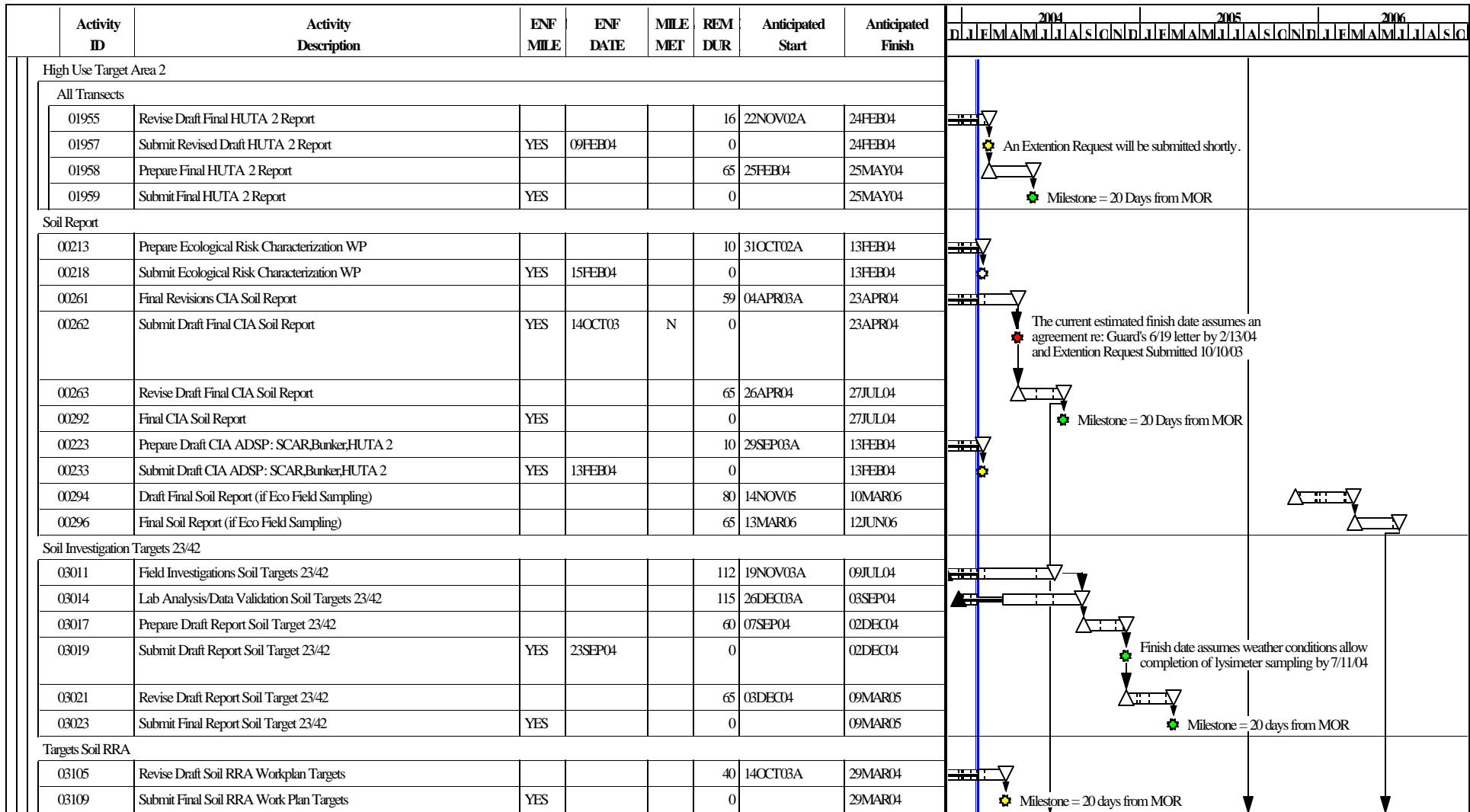


Figure 9

Start Date 29FEB00
 Finish Date 31JUL09
 Data Date 01FEB04
 Run Date 09FEB04 14:21



DRAFT

UB09

Sheet 2 of 13

Combined Schedule for the
 Impact Area GW Study Program
 as of 01FEB04

© Primavera Systems, Inc.

| Date | Revision | Checked | Approved |
|------|----------|---------|----------|
| | | | |
| | | | |
| | | | |
| | | | |

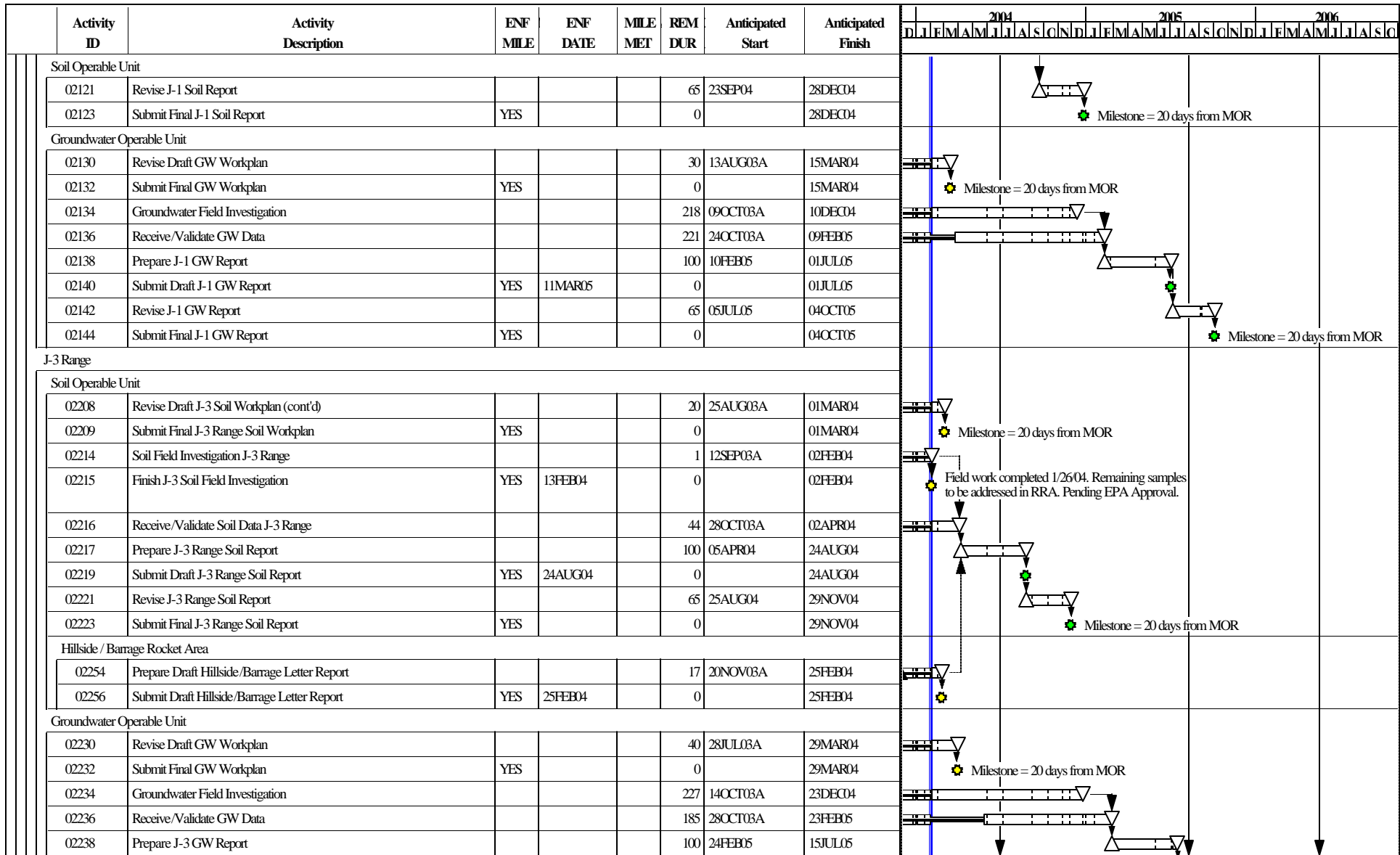


Figure 9

Start Date 29FEB00
 Finish Date 31JUL09
 Data Date 01FEB04
 Run Date 09FEB04 14:21



DRAFT

UB09

Sheet 4 of 13

Combined Schedule for the
 Impact Area GW Study Program
 as of 01FEB04

| Date | Revision | Checked | Approved |
|------|----------|---------|----------|
| | | | |
| | | | |
| | | | |
| | | | |

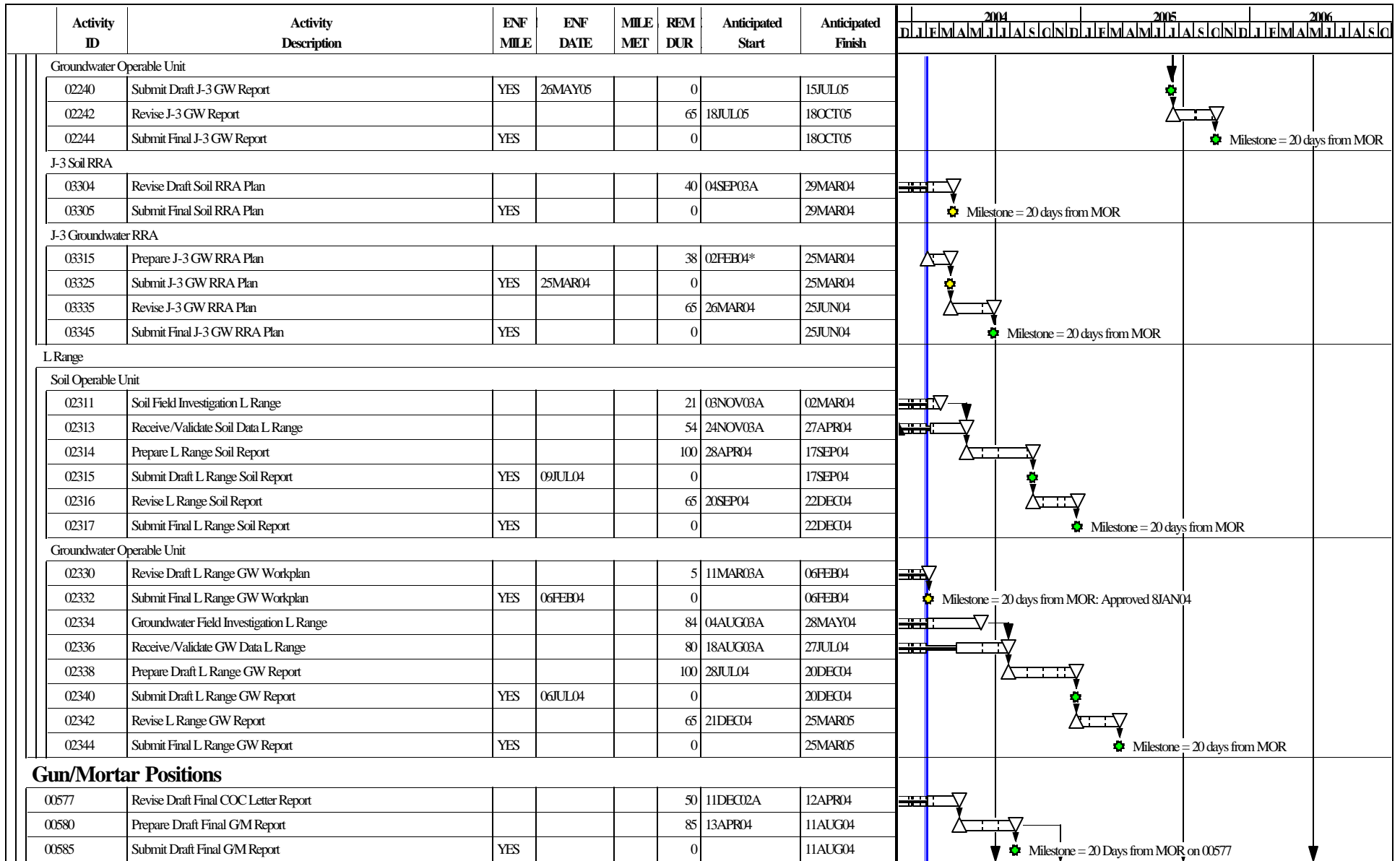


Figure 9

Start Date 29FEB00
 Finish Date 31JUL09
 Data Date 01FEB04
 Run Date 09FEB04 14:21



DRAFT

UB09 Sheet 5 of 13
**Combined Schedule for the
 Impact Area GW Study Program
 as of 01FEB04**

| Date | Revision | Checked | Approved |
|------|----------|---------|----------|
| | | | |
| | | | |
| | | | |
| | | | |

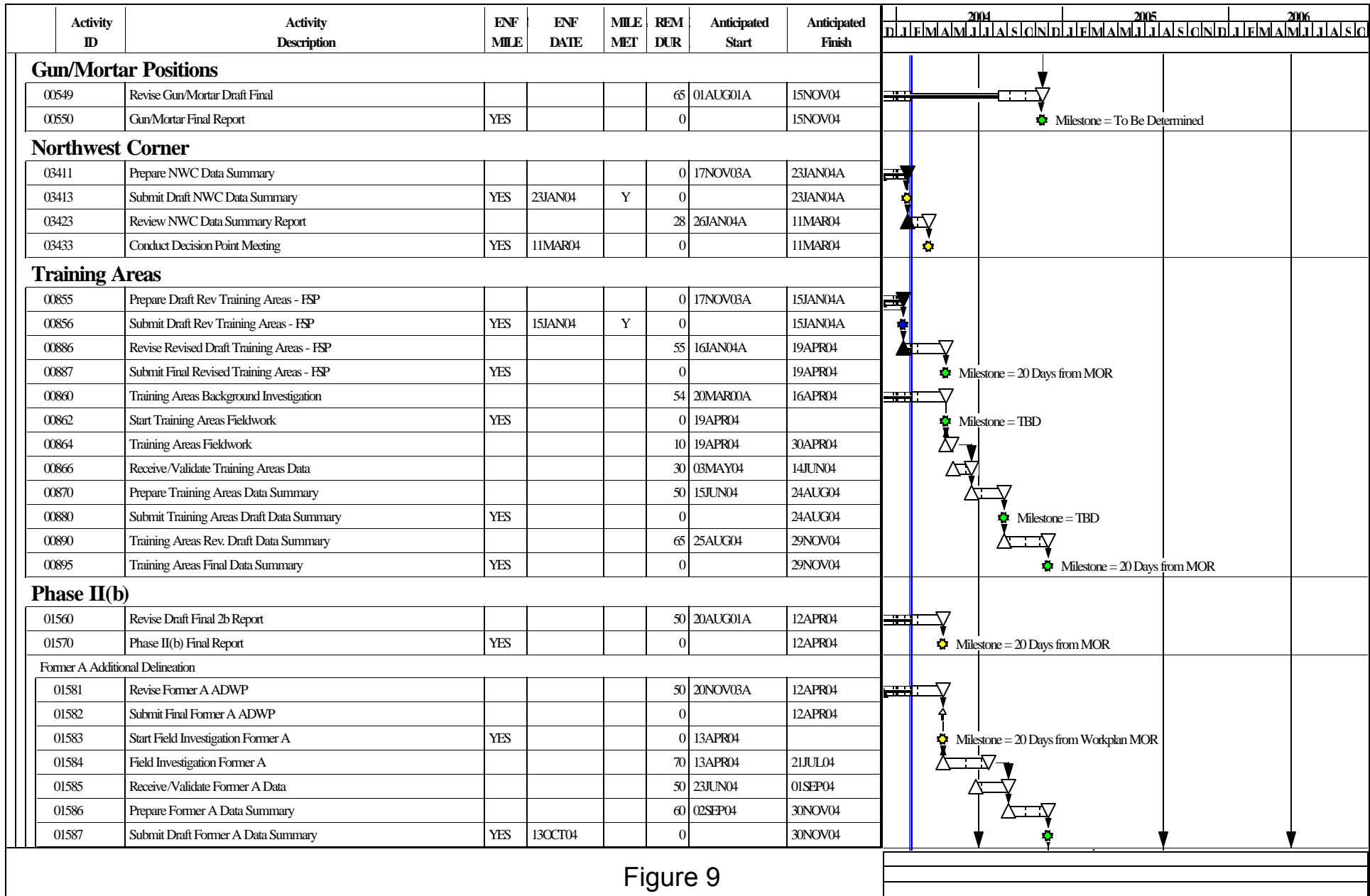


Figure 9

| Start Date 29FEB00 Finish Date 31JUL09 Data Date 01FEB04 Run Date 09FEB04 14:21 | | UB09 | Sheet 6 of 13 | <table border="1"> <thead> <tr> <th>Date</th> <th>Revision</th> <th>Checked</th> <th>Approved</th> </tr> </thead> <tbody> <tr><td> </td><td> </td><td> </td><td> </td></tr> <tr><td> </td><td> </td><td> </td><td> </td></tr> <tr><td> </td><td> </td><td> </td><td> </td></tr> <tr><td> </td><td> </td><td> </td><td> </td></tr> </tbody> </table> | Date | Revision | Checked | Approved | | | | | | | | | | | | | | | | |
|--|--------------|---|----------------------|---|------|----------|---------|----------|--|--|--|--|--|--|--|--|--|--|--|--|--|--|--|--|
| Date | Revision | Checked | Approved | | | | | | | | | | | | | | | | | | | | | |
| | | | | | | | | | | | | | | | | | | | | | | | | |
| | | | | | | | | | | | | | | | | | | | | | | | | |
| | | | | | | | | | | | | | | | | | | | | | | | | |
| | | | | | | | | | | | | | | | | | | | | | | | | |
| © Primavera Systems, Inc. | DRAFT | Combined Schedule for the Impact Area GW Study Program as of 01FEB04 | | | | | | | | | | | | | | | | | | | | | | |

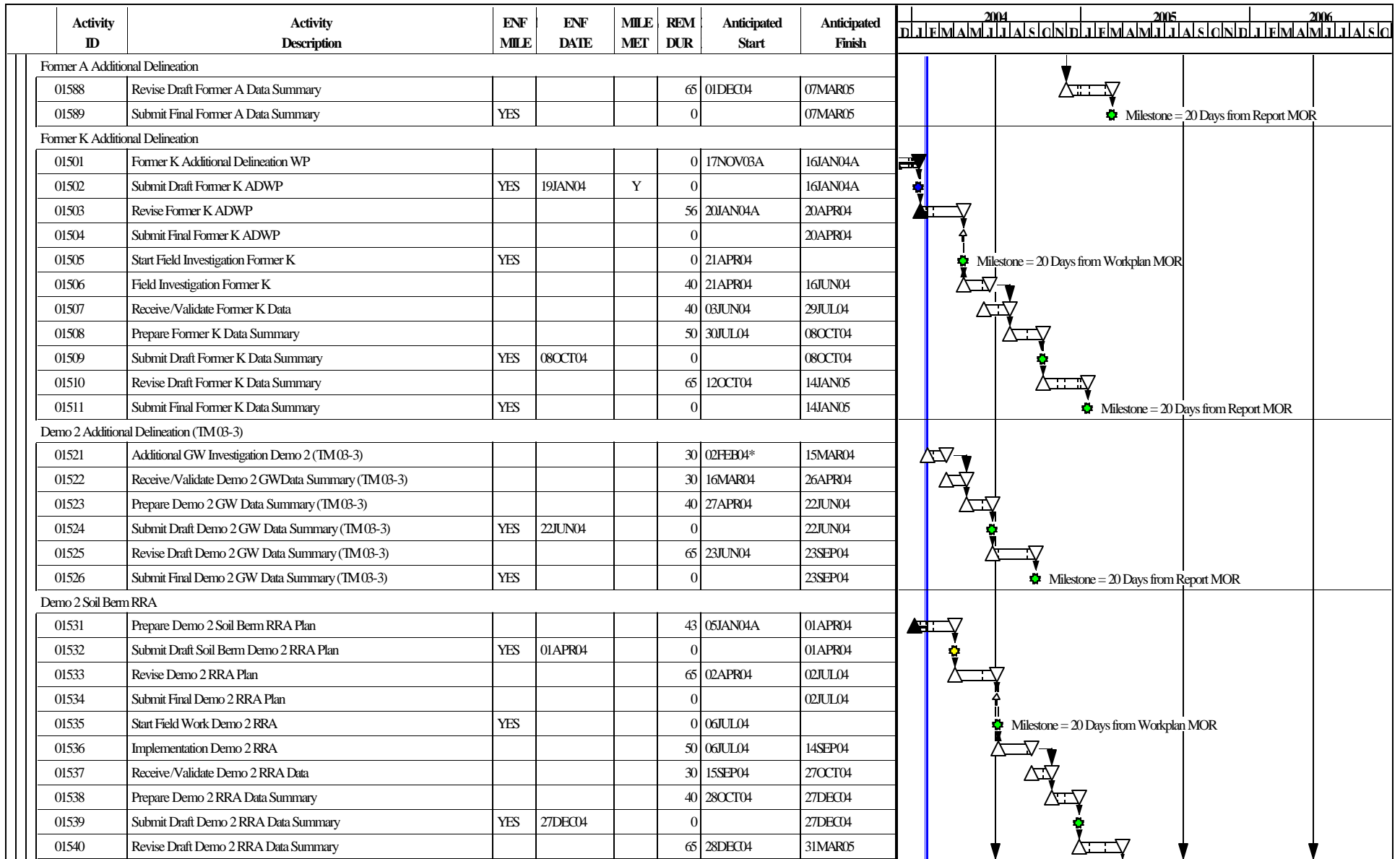


Figure 9

Start Date 29FEB00
 Finish Date 31JUL09
 Data Date 01FEB04
 Run Date 09FEB04 14:21



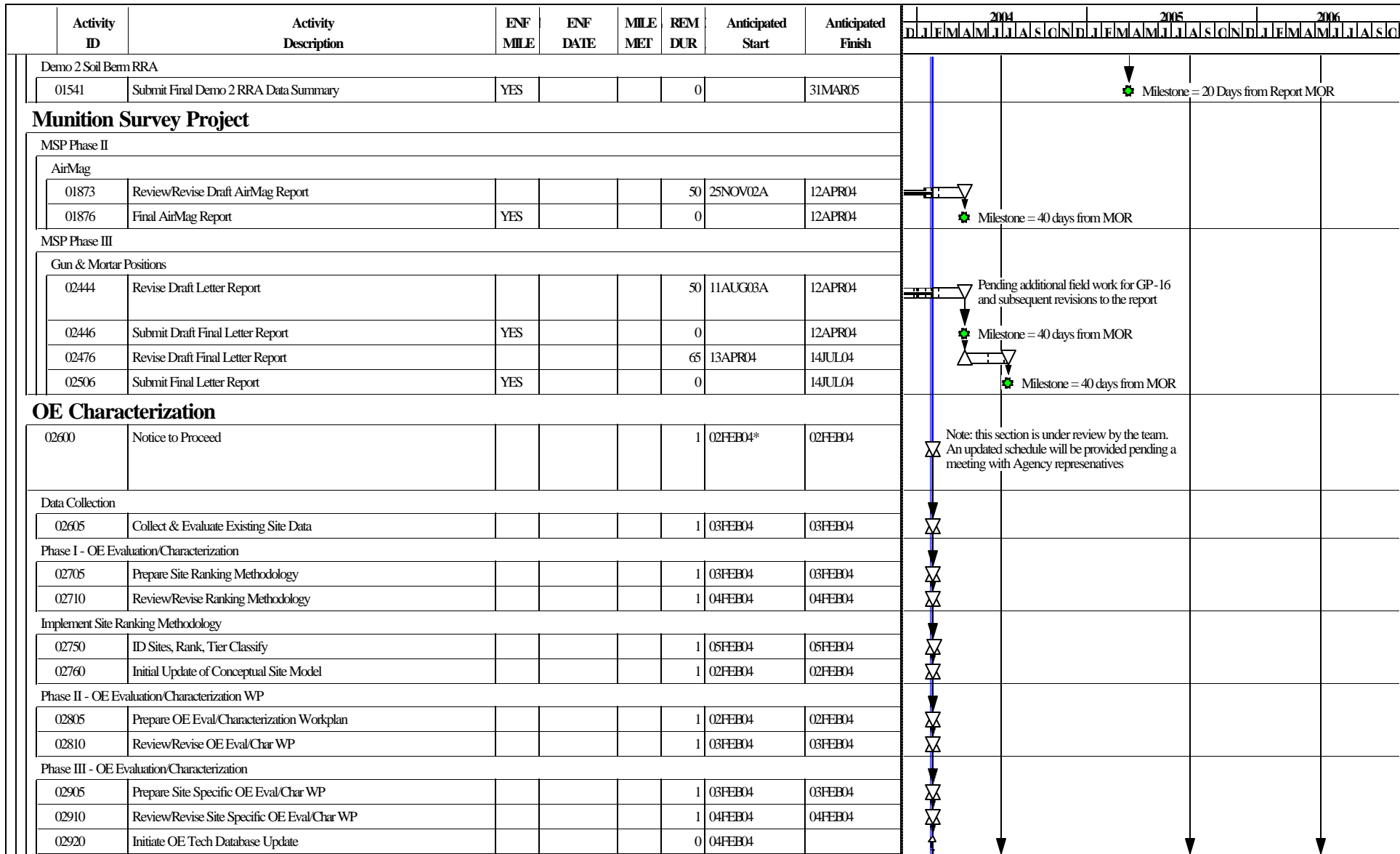
DRAFT

UB09

Sheet 7 of 13

Combined Schedule for the
 Impact Area GW Study Program
 as of 01FEB04

| Date | Revision | Checked | Approved |
|------|----------|---------|----------|
| | | | |
| | | | |
| | | | |



Note: this section is under review by the team. An updated schedule will be provided pending a meeting with Agency representatives

Figure 9

Start Date 29FEB00
 Finish Date 31JUL09
 Data Date 01FEB04
 Run Date 09FEB04 14:21

Early Bar
 Progress Bar

DRAFT

© Primavera Systems, Inc.

UB09 **Sheet 8 of 13**

Combined Schedule for the Impact Area GW Study Program as of 01FEB04

| Date | Revision | Checked | Approved |
|------|----------|---------|----------|
| | | | |
| | | | |
| | | | |
| | | | |
| | | | |

| Activity ID | Activity Description | ENF MILE | ENF DATE | MILE MET | REM DUR | Anticipated Start | Anticipated Finish | 2004 | | | | | | | | | | | | 2005 | | | | | | | | | | | | 2006 | | | | | | | | | | | |
|--|--|----------|----------|----------|---------|-------------------|--------------------|--|---|---|---|---|---|---|---|---|---|---|---|------|---|---|---|---|---|---|---|---|---|---|---|------|---|---|---|---|---|---|---|---|---|---|---|
| | | | | | | | | D | J | F | M | A | M | J | J | A | S | O | N | D | J | F | M | A | M | J | J | A | S | O | N | D | J | F | M | A | M | J | J | A | S | O | N |
| Phase III - OE Evaluation/Characterization | | | | | | | | | | | | | | | | | | | | | | | | | | | | | | | | | | | | | | | | | | | |
| 02930 | Initiate Evaluation of Priority Sites | | | | 0 | 05FEB04 | | | | | | | | | | | | | | | | | | | | | | | | | | | | | | | | | | | | | |
| 02940 | Initiate Draft Site Specific OE Report | | | | 0 | 20JUL04 | | | | | | | | | | | | | | | | | | | | | | | | | | | | | | | | | | | | | |
| Western Boundary | | | | | | | | | | | | | | | | | | | | | | | | | | | | | | | | | | | | | | | | | | | |
| 03463 | Field Investigation (Soil & Groundwater) | | | | 54 | 03FEB03A | 16APR04 | | | | | | | | | | | | | | | | | | | | | | | | | | | | | | | | | | | | |
| 03473 | Prepare Western Boundary Draft Report | | | | 110 | 19APR04 | 22SEP04 | | | | | | | | | | | | | | | | | | | | | | | | | | | | | | | | | | | | |
| 03483 | Submit Western Boundary Draft Report | YES | 01SEP04 | | 0 | | 22SEP04 | | | | | | | | | | | | | | | | | | | | | | | | | | | | | | | | | | | | |
| Program Wide Activities | | | | | | | | | | | | | | | | | | | | | | | | | | | | | | | | | | | | | | | | | | | |
| Military Munitions Management Plan | | | | | | | | | | | | | | | | | | | | | | | | | | | | | | | | | | | | | | | | | | | |
| 03513 | Prepare Revised Draft Munitions Managment Plan | | | | 0 | 28OCT03A | 23DEC03A | | | | | | | | | | | | | | | | | | | | | | | | | | | | | | | | | | | | |
| 03523 | Submit Revised Draft Munitions Managment Plan | YES | 01MAR04 | Y | 0 | | 23DEC03A | | | | | | | | | | | | | | | | | | | | | | | | | | | | | | | | | | | | |
| OE and Range Residue Materials Disposition | | | | | | | | | | | | | | | | | | | | | | | | | | | | | | | | | | | | | | | | | | | |
| 03552 | Revise Draft OE and RR Material Disposition Plan | | | | 50 | 04NOV03A | 12APR04 | | | | | | | | | | | | | | | | | | | | | | | | | | | | | | | | | | | | |
| 03553 | Submit Final OE and RR Material Disposition Plan | YES | | | 0 | | 12APR04 | Milestone = 20 days from MOR | | | | | | | | | | | | | | | | | | | | | | | | | | | | | | | | | | | |
| IDM Material Disposition | | | | | | | | | | | | | | | | | | | | | | | | | | | | | | | | | | | | | | | | | | | |
| 03583 | Prepare Revised Draft IDM Materials Disp. Plan | | | | 14 | 24DEC03A | 20FEB04 | | | | | | | | | | | | | | | | | | | | | | | | | | | | | | | | | | | | |
| 03593 | Submit Revised Draft IDM Materials Disp. Plan | | | | 0 | | 20FEB04 | | | | | | | | | | | | | | | | | | | | | | | | | | | | | | | | | | | | |
| 03603 | Prepare Final IDM Materials Disp. Plan | | | | 65 | 23FEB04 | 21MAY04 | Draft submitted 11/3/03 was disapproved 12/23/03 EPA REQUESTED RESUBMITTAL ON 2/20/04 | | | | | | | | | | | | | | | | | | | | | | | | | | | | | | | | | | | |
| 03613 | Submit Final IDM Materials Disp. Plan | YES | | | 0 | | 21MAY04 | Milestone = 20 days from MOR | | | | | | | | | | | | | | | | | | | | | | | | | | | | | | | | | | | |
| Blow In Place (BIP) Summary Reports | | | | | | | | | | | | | | | | | | | | | | | | | | | | | | | | | | | | | | | | | | | |
| 03633 | Submit 7/02-9/02 Draft Report | | | | 0 | | 12DEC03A | | | | | | | | | | | | | | | | | | | | | | | | | | | | | | | | | | | | |
| 03643 | Submit 1/03-3/03 Draft Report | | | | 0 | | 12MAR04* | | | | | | | | | | | | | | | | | | | | | | | | | | | | | | | | | | | | |
| 03653 | Submit 4/03-6/03 Draft Report | | | | 0 | | 09APR04* | | | | | | | | | | | | | | | | | | | | | | | | | | | | | | | | | | | | |
| 03663 | Submit 7/03-9/03 Draft Report | | | | 0 | | 07MAY04* | | | | | | | | | | | | | | | | | | | | | | | | | | | | | | | | | | | | |
| 03673 | Submit 10/03-12/03 Draft Report | | | | 0 | | 11JUN04* | | | | | | | | | | | | | | | | | | | | | | | | | | | | | | | | | | | | |
| 03683 | Submit 10/02-12/02 Draft Report | | | | 0 | | 17FEB04* | | | | | | | | | | | | | | | | | | | | | | | | | | | | | | | | | | | | |
| Groundwater Monitoring Programs | | | | | | | | | | | | | | | | | | | | | | | | | | | | | | | | | | | | | | | | | | | |
| 08310 | Review/Revise Site-Wide Perchlorate Report | | | | 42 | 20DEC02A | 31MAR04 | | | | | | | | | | | | | | | | | | | | | | | | | | | | | | | | | | | | |
| 08315 | Final Site-Wide Perchlorate Report | YES | 13JAN04 | | 0 | | 31MAR04 | Milestone = 20 days from MOR: Approved 12DEC03A Extension to 31Mar04 was Requested | | | | | | | | | | | | | | | | | | | | | | | | | | | | | | | | | | | |
| LTGM Sampling for 2004 | | | | | | | | | | | | | | | | | | | | | | | | | | | | | | | | | | | | | | | | | | | |
| 08350 | Prepare/Submit PEP Frequency Summary | | | | 15 | 20JAN04A | 23FEB04 | | | | | | | | | | | | | | | | | | | | | | | | | | | | | | | | | | | | |

Figure 9

Start Date 29FEB00
 Finish Date 31JUL09
 Data Date 01FEB04
 Run Date 09FEB04 14:21



DRAFT

UB09

Sheet 9 of 13

Combined Schedule for the
 Impact Area GW Study Program
 as of 01FEB04

| Date | Revision | Checked | Approved |
|------|----------|---------|----------|
| | | | |
| | | | |
| | | | |

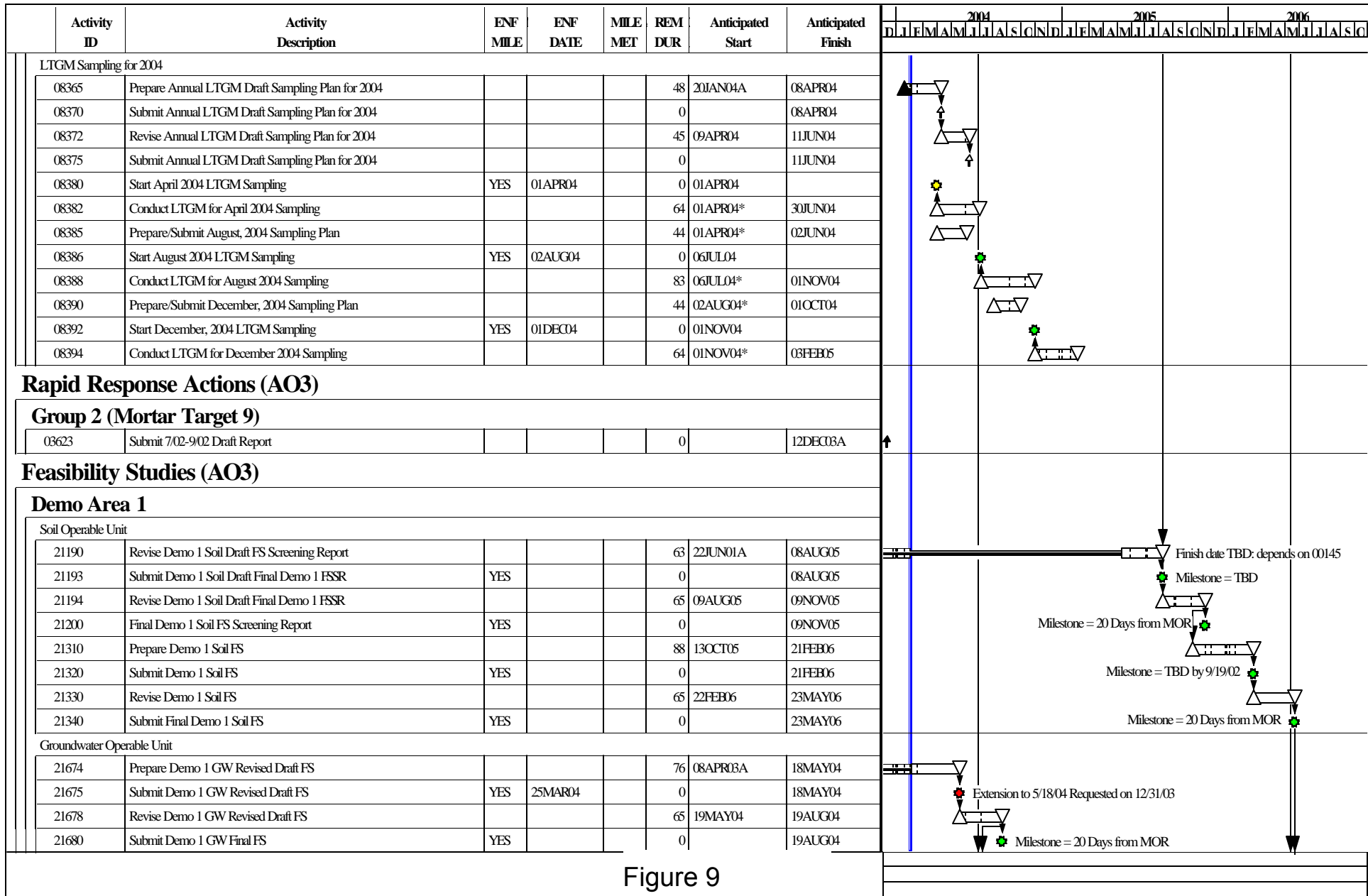


Figure 9

| | | | | | | | | |
|---------------------------|---------------|--------------|-------------|-----------------------|--------------|---|---------|----------|
| Start Date | 29FEB00 | Early Bar | UB09 | Sheet 10 of 13 | Date | Revision | Checked | Approved |
| Finish Date | 31JUL09 | | | | Progress Bar | Combined Schedule for the Impact Area GW Study Program as of 01FEB04 | | |
| Data Date | 01FEB04 | DRAFT | | | | | | |
| Run Date | 09FEB04 14:21 | | | | | | | |
| © Primavera Systems, Inc. | | | | | | | | |

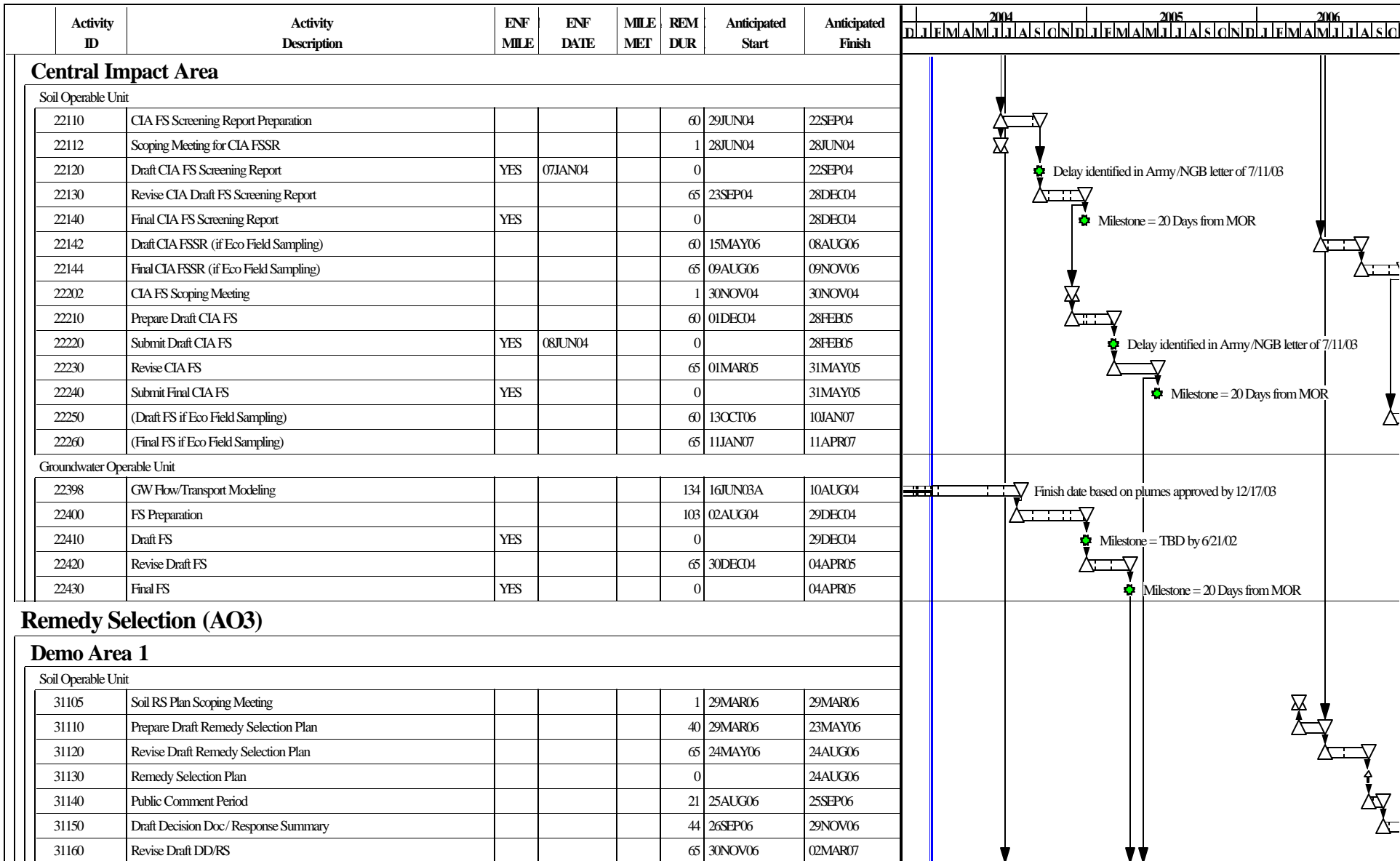


Figure 9

Start Date 29FEB00
 Finish Date 31JUL09
 Data Date 01FEB04
 Run Date 09FEB04 14:21



DRAFT

© Primavera Systems, Inc.

UB09 Sheet 11 of 13

Combined Schedule for the
 Impact Area GW Study Program
 as of 01FEB04

| Date | Revision | Checked | Approved |
|------|----------|---------|----------|
| | | | |
| | | | |
| | | | |

| Activity ID | Activity Description | ENF MILE | ENF DATE | MILE MET | REM DUR | Anticipated Start | Anticipated Finish | 2004 2005 2006 D J F M A M J J A S O N D J F M A M J J A S O N D J F M A M J J A S O N D | | | | | | | | | | | |
|----------------------------|--|----------|----------|----------|---------|-------------------|--------------------|---|--|--|--|--|--|--|--|--|--|--|--|
| Soil Operable Unit | | | | | | | | | | | | | | | | | | | |
| 31170 | Final Decision Doc/ Response Summary | | | | 0 | | 02MAR07 | | | | | | | | | | | | |
| Groundwater Operable Unit | | | | | | | | | | | | | | | | | | | |
| 31505 | GW RS Plan Scoping Meeting | | | | 1 | 09JUL04 | 09JUL04 | | | | | | | | | | | | |
| 31510 | Prepare Draft Remedy Selection Plan | | | | 50 | 09JUL04 | 17SEP04 | | | | | | | | | | | | |
| 31515 | Submit Demo 1 GW Draft RS Plan | YES | 26JUL04 | | 0 | | 17SEP04 | | | | | | | | | | | | |
| 31520 | Revise Demo 1 GW Draft Remedy Selection Plan | | | | 65 | 20SEP04 | 22DEC04 | | | | | | | | | | | | |
| 31530 | Demo 1 GW Remedy Selection Plan | | | | 0 | | 22DEC04 | | | | | | | | | | | | |
| 31540 | Demo 1 GW Public Comment Period | | | | 22 | 23DEC04 | 26JAN05 | | | | | | | | | | | | |
| 31550 | Demo 1 GW Draft Decision Doc/ Response Summary | | | | 60 | 27JAN05 | 21APR05 | | | | | | | | | | | | |
| 31560 | Revise Demo 1 GW Draft DD/RS | | | | 65 | 22APR05 | 25JUL05 | | | | | | | | | | | | |
| 31570 | Final Demo 1 GW Decision Doc/ Response Summary | | | | 0 | | 25JUL05 | | | | | | | | | | | | |
| Central Impact Area | | | | | | | | | | | | | | | | | | | |
| Soil Operable Unit | | | | | | | | | | | | | | | | | | | |
| 32105 | Soil RS Plan Scoping Meeting | | | | 1 | 03MAY05 | 03MAY05 | | | | | | | | | | | | |
| 32110 | Prepare Draft Remedy Selection Plan | | | | 60 | 03MAY05 | 27JUL05 | | | | | | | | | | | | |
| 32120 | Revise Draft Remedy Selection Plan | | | | 65 | 28JUL05 | 28OCT05 | | | | | | | | | | | | |
| 32130 | Remedy Selection Plan | | | | 0 | | 28OCT05 | | | | | | | | | | | | |
| 32140 | Public Comment Period | | | | 21 | 31OCT05 | 30NOV05 | | | | | | | | | | | | |
| 32150 | Draft Decision Doc/ Response Summary | | | | 64 | 01DEC05 | 06MAR06 | | | | | | | | | | | | |
| 32160 | Revise Draft DD/RS | | | | 65 | 07MAR06 | 06JUN06 | | | | | | | | | | | | |
| 32170 | Final Decision Doc/ Response Summary | | | | 0 | | 06JUN06 | | | | | | | | | | | | |
| 32172 | Draft DD/RS (if Eco Field Sampling) | | | | 210 | 12DEC06 | 04OCT07 | | | | | | | | | | | | |
| 32174 | Final DD/RS (if Eco Field Sampling) | | | | 65 | 05OCT07 | 08JAN08 | | | | | | | | | | | | |
| Groundwater Operable Unit | | | | | | | | | | | | | | | | | | | |
| 32505 | GW RS Plan Scoping Meeting | | | | 1 | 07JAN05 | 07JAN05 | | | | | | | | | | | | |
| 32510 | Prepare Draft Remedy Selection Plan | | | | 60 | 07JAN05 | 04APR05 | | | | | | | | | | | | |
| 32520 | Revise Draft Remedy Selection Plan | | | | 65 | 05APR05 | 06JUL05 | | | | | | | | | | | | |
| 32530 | Remedy Selection Plan | | | | 0 | | 06JUL05 | | | | | | | | | | | | |
| 32540 | Public Comment Period | | | | 21 | 07JUL05 | 04AUG05 | | | | | | | | | | | | |
| 32550 | Draft Decision Doc/ Response Summary | | | | 64 | 05AUG05 | 04NOV05 | | | | | | | | | | | | |
| 32560 | Revise Draft DD/RS | | | | 65 | 07NOV05 | 10FEB06 | | | | | | | | | | | | |

Figure 9

Start Date 29FEB00
 Finish Date 31JUL09
 Data Date 01FEB04
 Run Date 09FEB04 14:21



DRAFT

© Primavera Systems, Inc.

UB09

Sheet 12 of 13

Combined Schedule for the
 Impact Area GW Study Program
 as of 01FEB04

| Date | Revision | Checked | Approved |
|------|----------|---------|----------|
| | | | |
| | | | |
| | | | |

