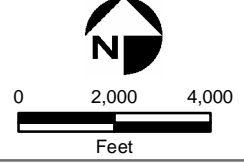


- Validated Detection Greater than or Equal to Maximum Contaminant Level/Health Advisories
- Validated Detection Less than Maximum Contaminant Level/Health Advisories
- Validated Non-Detect
- No Data Available
- Proposed Monitoring Well

- ⊕ Current Gun Position
- ⊛ Current Mortar Position
- ⊕ Old Gun Position
- ⊛ Old Mortar Position
- Combat Training Areas
- Military Training Areas
- Military Ranges

- Validated Non-Detect Water Supply Well
- Validated Detection Less than 1 ppb Water Supply Well
- Proposed Water Supply Well
- Water Table Contour (Feet NGVD) AMEC, September 2003

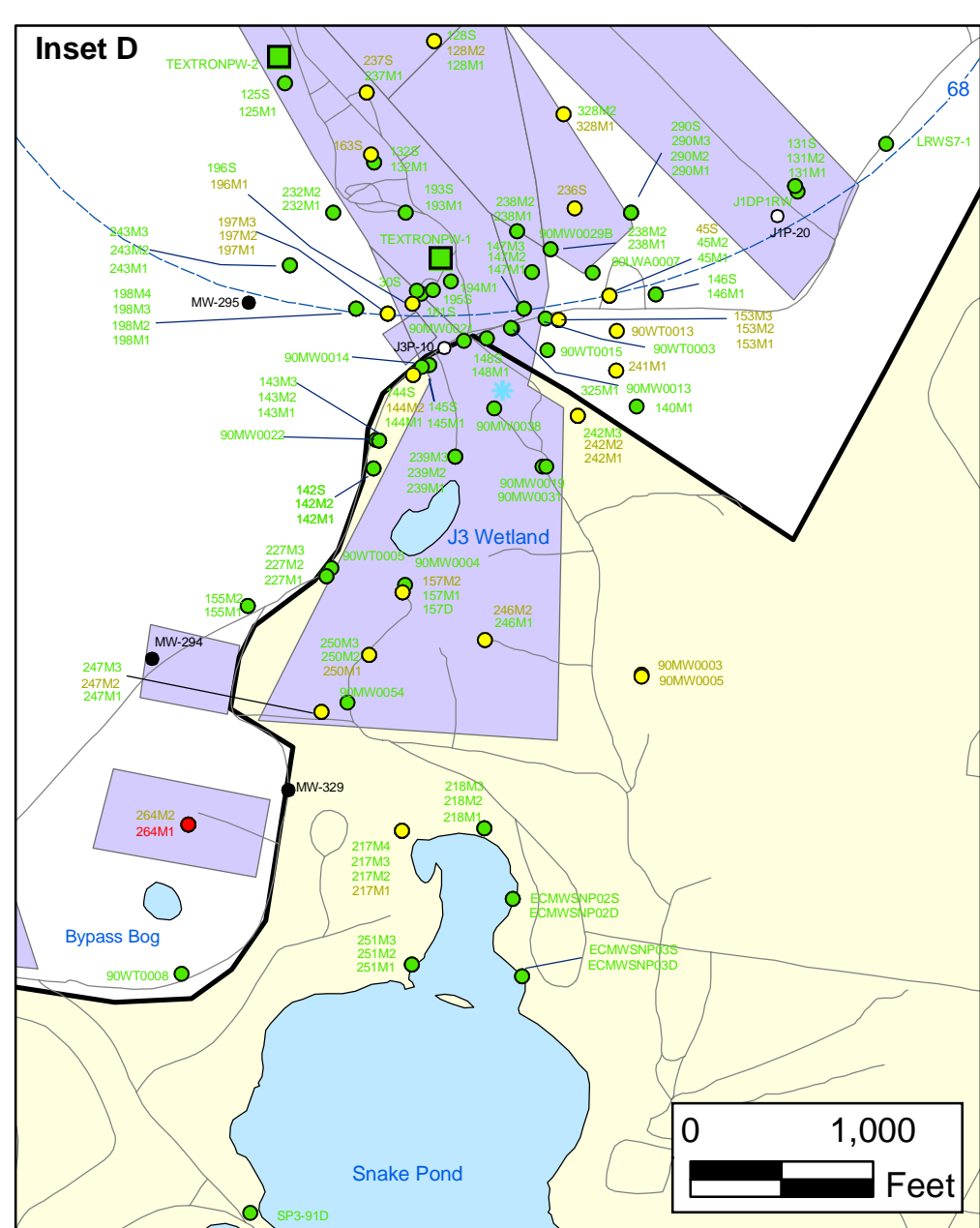
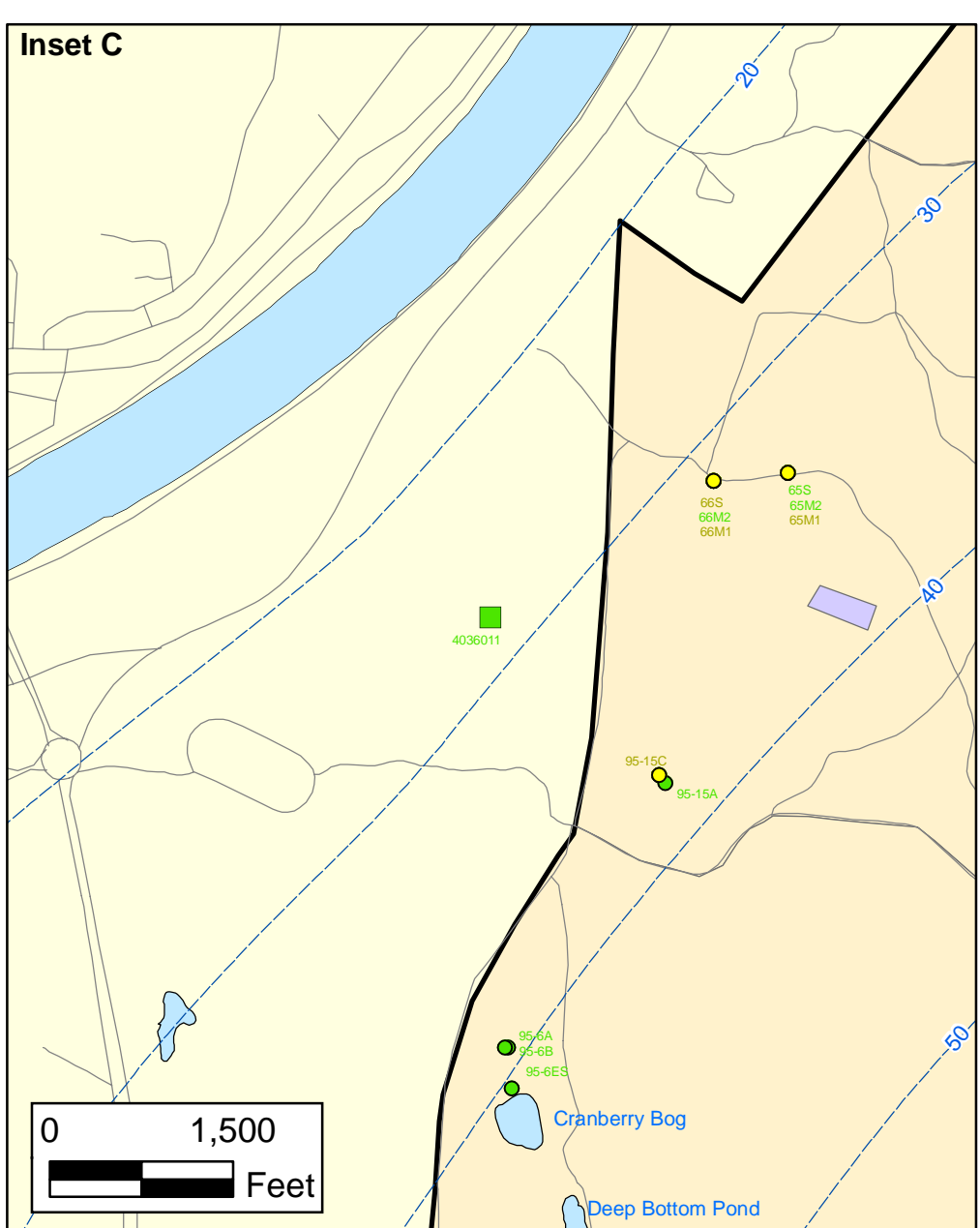
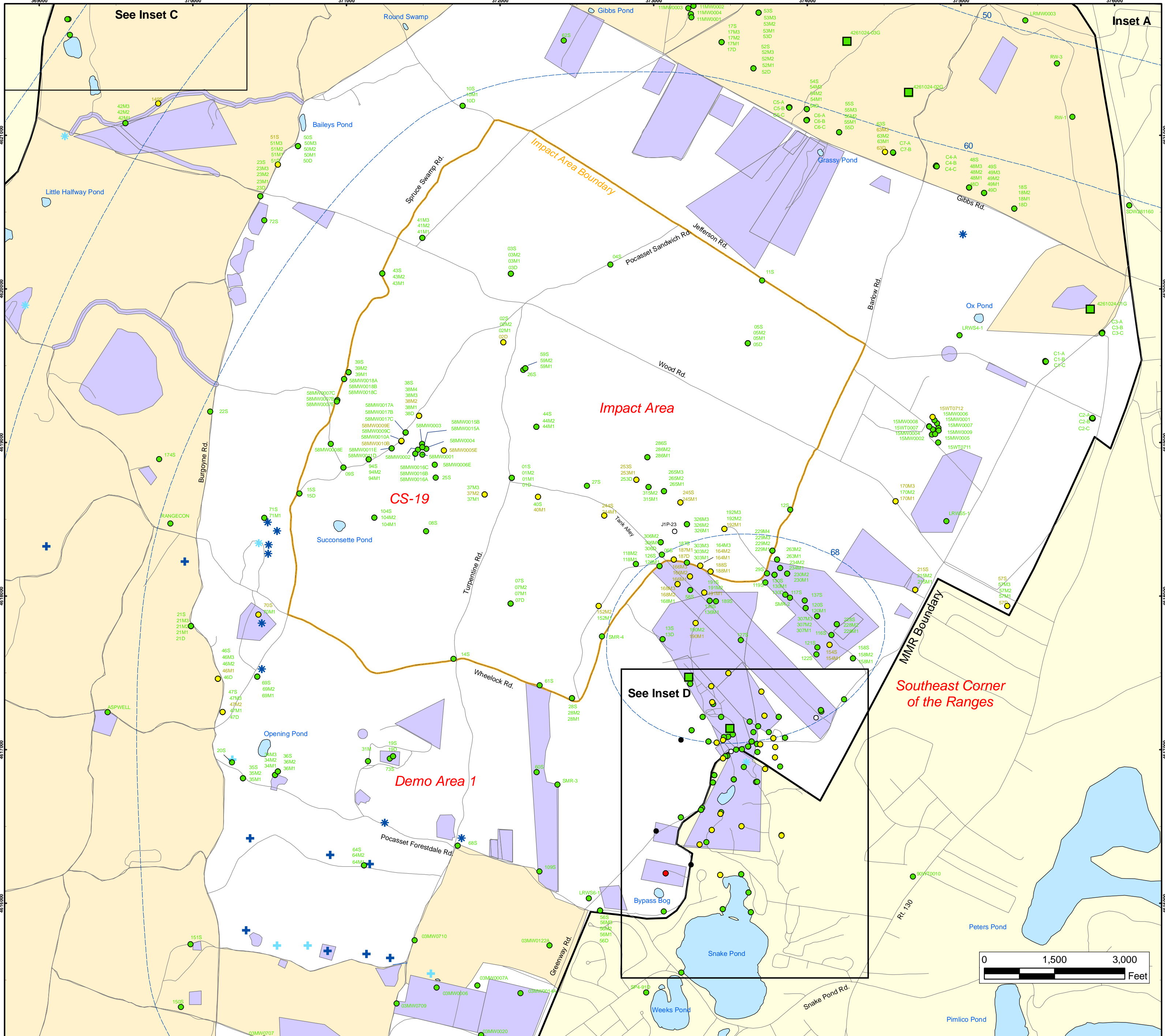


Sources & Notes
 Base map data from US Geological Survey
 7 1/2 minute Topographic Maps.
 Source: Office of Geographic and
 Environmental Information (MassGIS)
 Commonwealth of Massachusetts
 Executive Office of Environmental Affairs

DRAFT
 AMEC Earth & Environmental, Inc.
 Westford, Massachusetts

**Semi-Volatile Organic Compounds (Excluding BEHP) in Groundwater
 Compared to Maximum Contaminant Level/Health Advisories
 Validated Data as of 09/24/04**

FIGURE
5



Semi-Volatile Organic Compounds (excluding BEHP) in Groundwater Compared to Maximum Contaminant Level/Health Advisories Validated Data as of 09/24/04

- Validated Detection Greater than or Equal to Maximum Contaminant Level/Health Advisories
- Validated Detection Less than Maximum Contaminant Level/Health Advisories
- Validated Non-Detect
- No Data Available
- Proposed Monitoring Well
- Military Training Areas
- Military Ranges
- + Current Gun Position
- * Current Mortar Position
- + Old Gun Position
- * Old Mortar Position
- Validated Non-Detect Water Supply Well
- Water Table Contour (Feet NGVD), AMEC, September 2003

Impact Area Groundwater Study Program

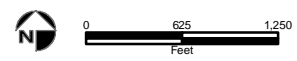
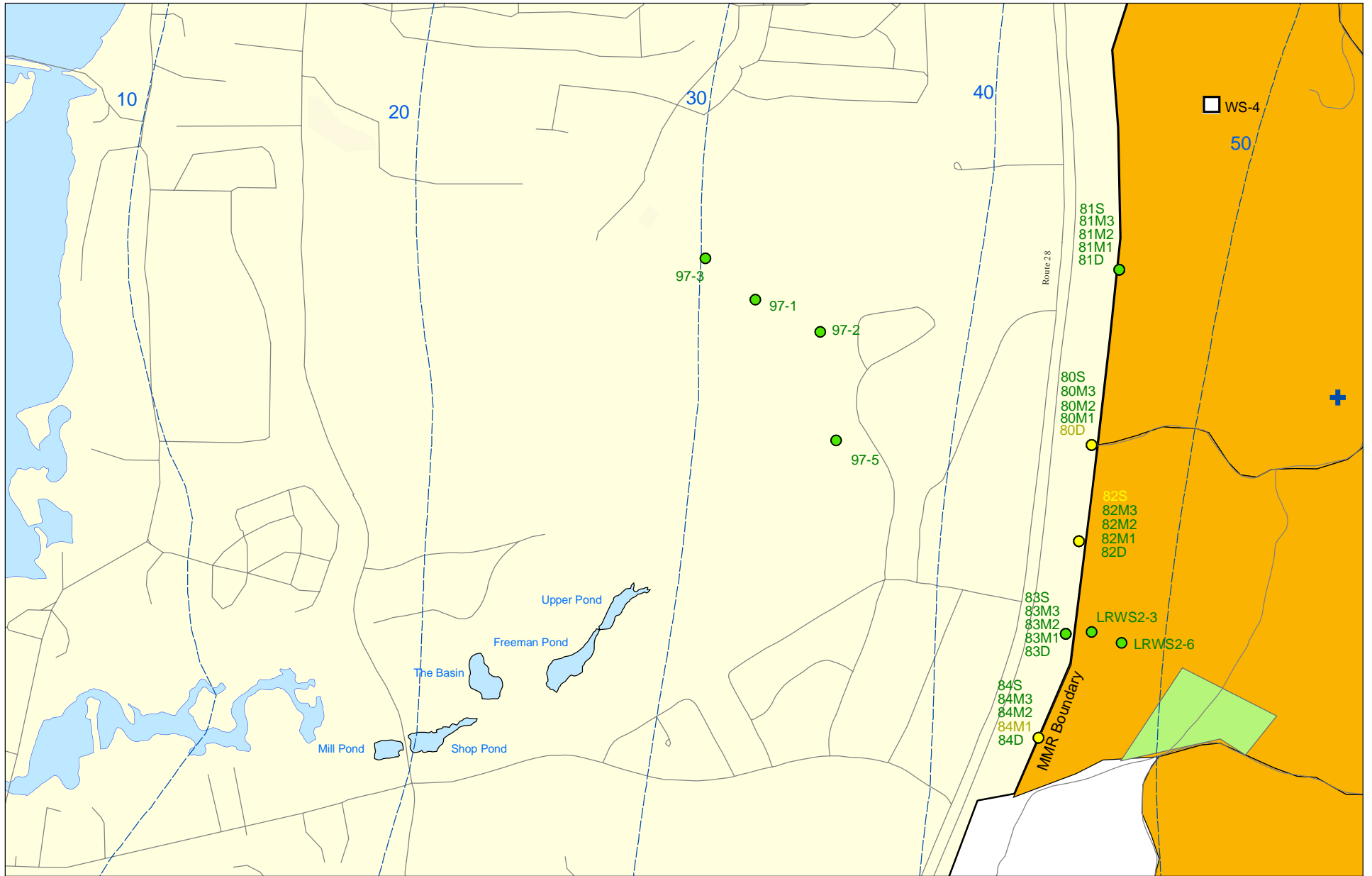
DRAFT

AMEC Earth & Environmental, Inc.
Westford, Massachusetts

Sources & Notes
Base map data from US Geological Survey
7 1/2 minute Topographic Maps
Source: Office of Geographic and Environmental Information (MassGIS)
Commonwealth of Massachusetts
Executive Office of Environmental Affairs

FIGURE 5

Inset Map



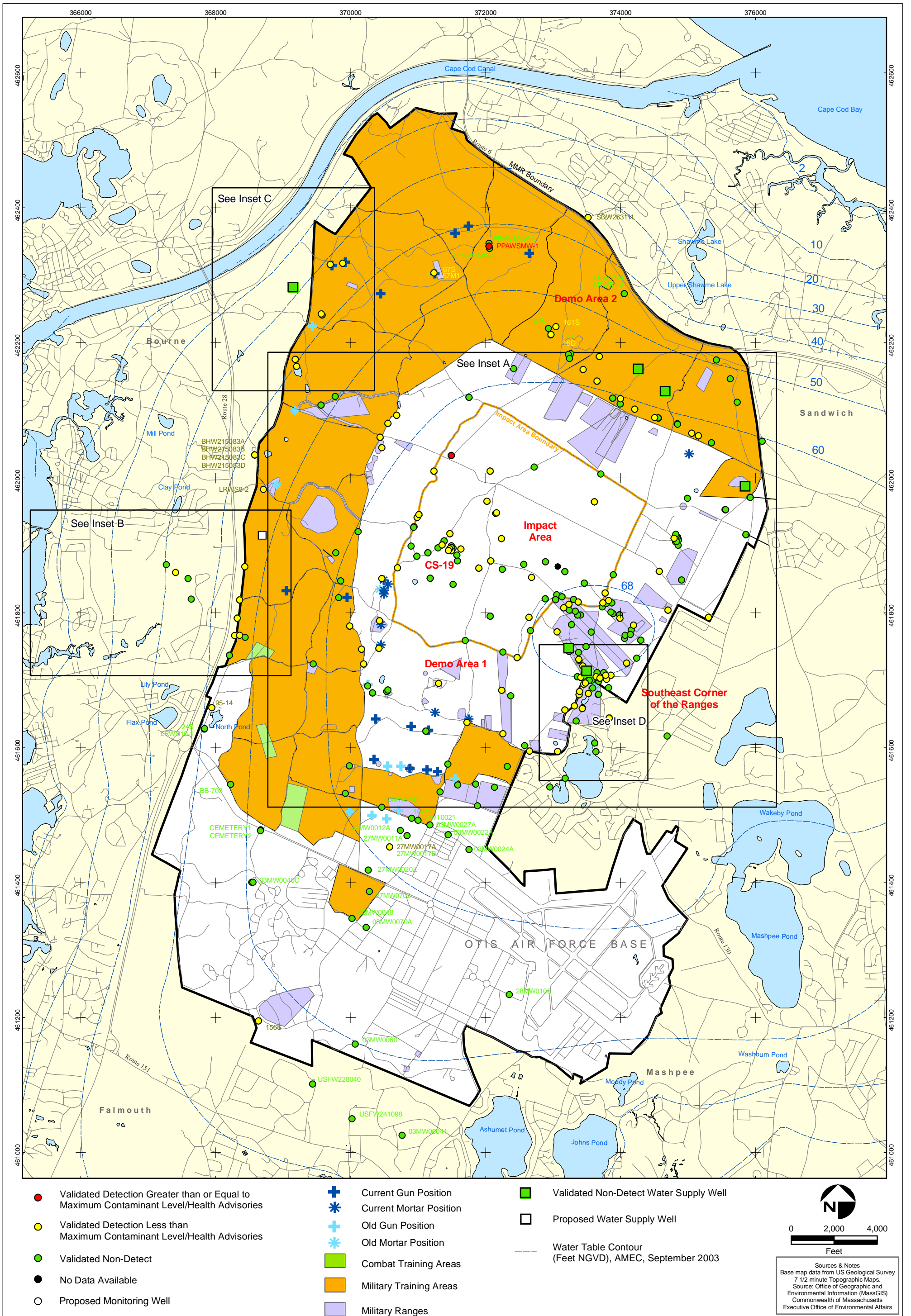
Sources & Notes:
 Base map data from US Geological Survey
 7 1/2 minute Topographic maps.
 Source: MassGIS

- Validated Detection Less than Maximum Contaminant Level/Health Advisories
- Validated Non-Detect
- Proposed Water Supply Well
- + Current Gun Position

- Combat Training Areas
- Military Training Areas

--- Water Table Contour (Feet NGVD), AMEC, September 2003

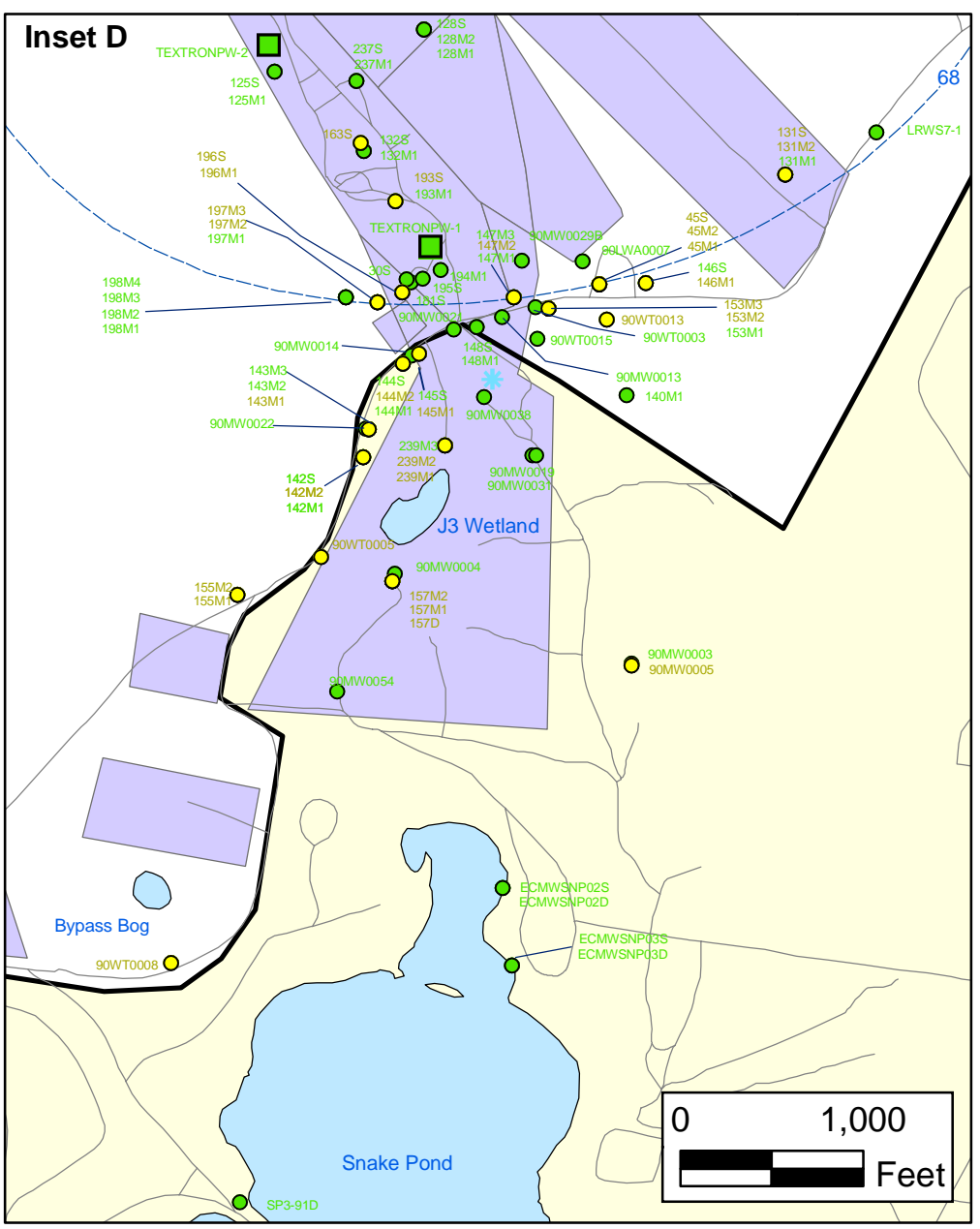
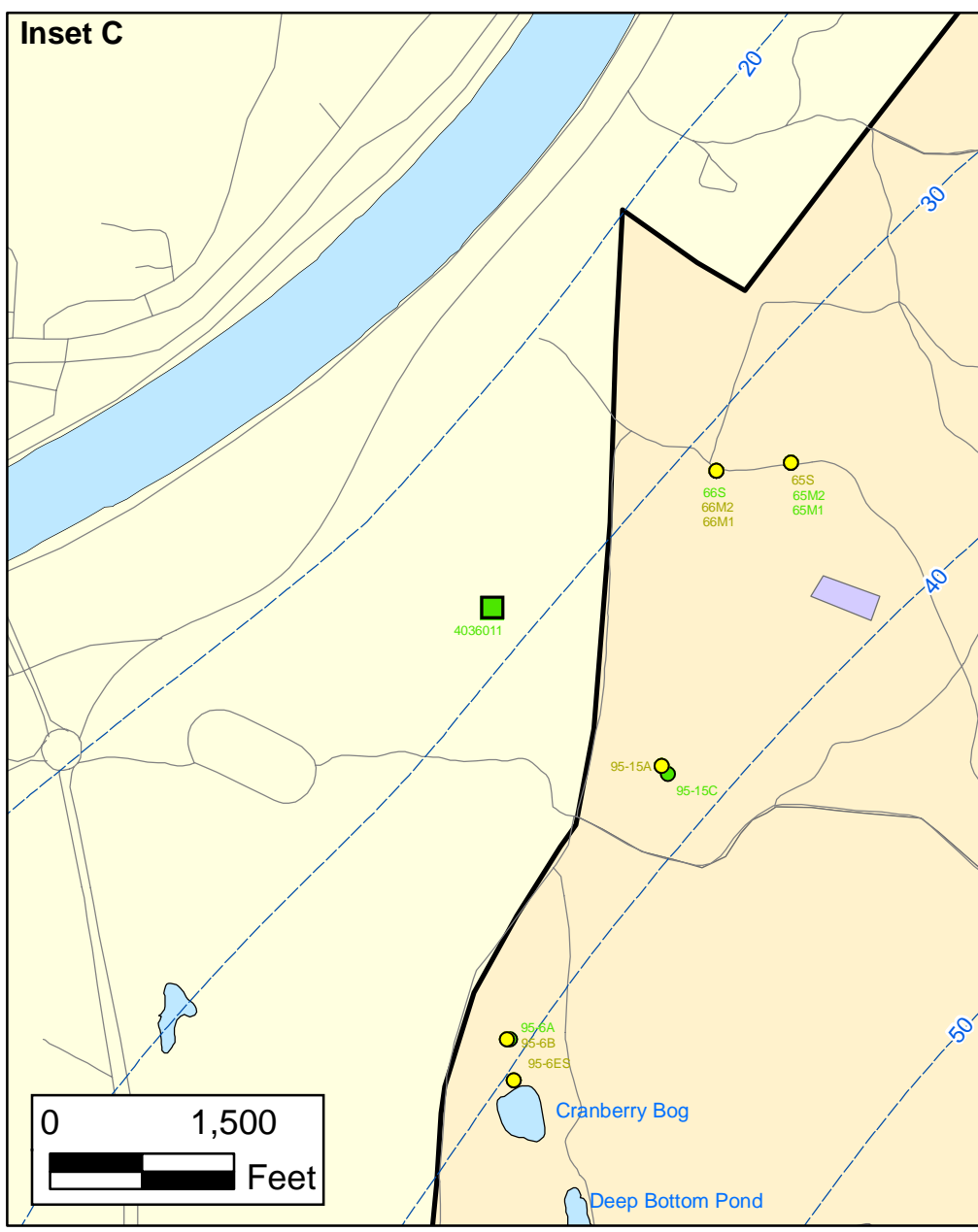
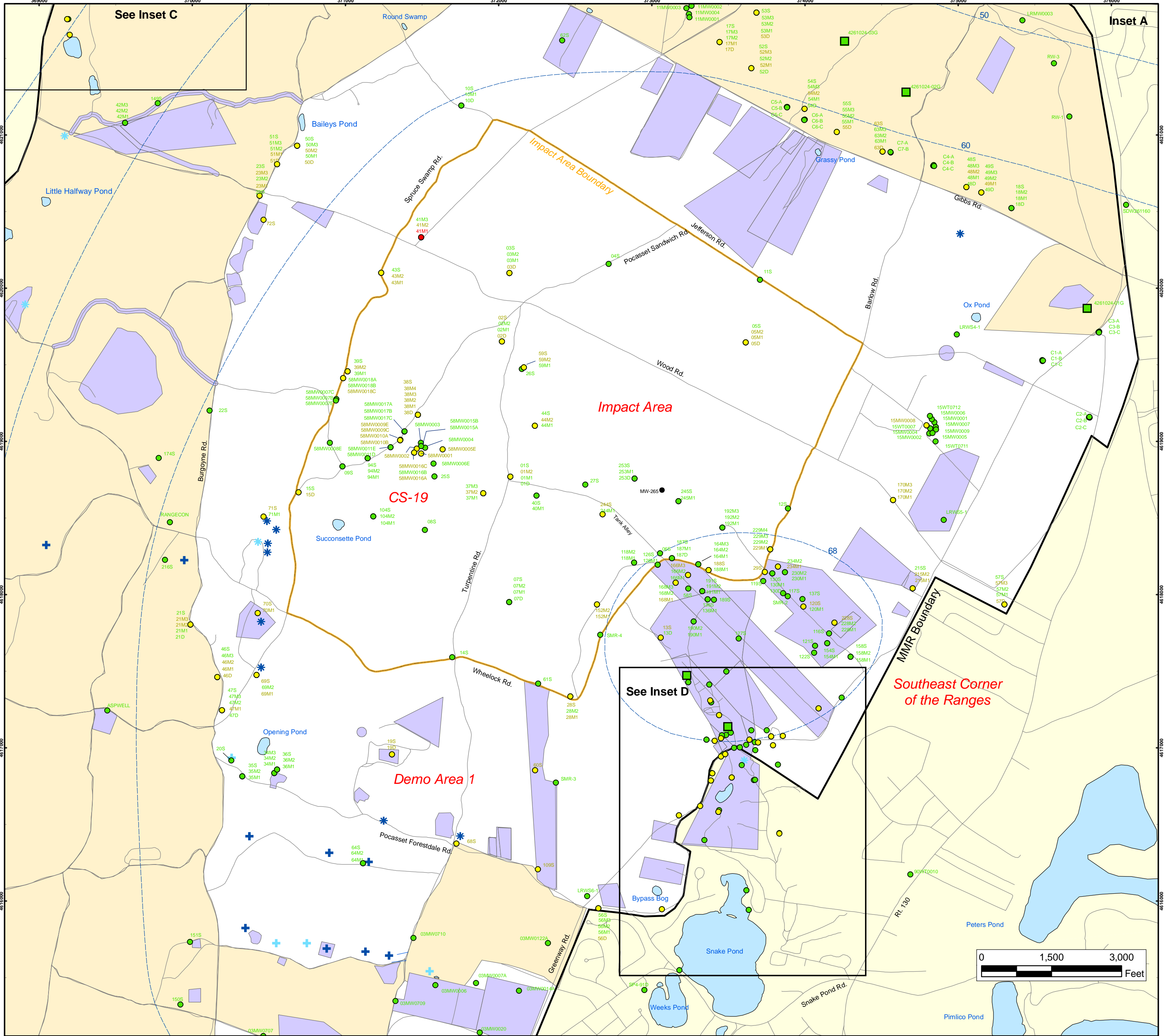
Semi-Volatile Organic Compounds (excluding BEHP) in Groundwater Compared to Maximum Contaminant Level/Health Advisories
 Validated Data as of 09/24/04



DRAFT
 AMEC Earth & Environmental, Inc.
 Westford, Massachusetts

**Herbicides & Pesticides in Groundwater Compared to
 Maximum Contaminant Level/Health Advisories
 Validated Data as of 09/24/04**

**FIGURE
 7**



Herbicides and Pesticides in Groundwater Compared to Maximum Contaminant Level/Health Advisories Validated Data as of 09/24/04

- Validated Detection Greater than or Equal to Maximum Contaminant Level/Health Advisories (Red dot)
- Validated Detection Less than Maximum Contaminant Level/Health Advisories (Yellow dot)
- Validated Non-Detect (Green dot)
- No Data Available (Black dot)
- Proposed Monitoring Well (White circle)
- Military Training Areas (Light orange shaded area)
- Military Ranges (Light purple shaded area)
- Current Gun Position (Blue cross)
- Current Mortar Position (Blue asterisk)
- Old Gun Position (Light blue cross)
- Old Mortar Position (Light blue asterisk)
- Validated Non-Detect Water Supply Well (Green square)
- Validated Detection Less than Maximum Contaminant Level/Health Advisories Water Supply Well (Yellow square)
- Water Table Contour (Feet NGVD), AMEC, September 2003 (Blue dashed line)

Impact Area Groundwater Study Program
DRAFT
 AMEC Earth & Environmental, Inc.
 Westford, Massachusetts

Sources & Notes
 Base map data from US Geological Survey 7 1/2 minute Topographic Maps
 Source: Office of Geographic and Environmental Information (MassGIS) Commonwealth of Massachusetts Executive Office of Environmental Affairs

FIGURE 7
Inset Map

