


- Validated Detection Greater than or Equal to Maximum Contaminant Level/Health Advisories
- Validated Detection Less than Maximum Contaminant Level/Health Advisories
- Validated Non-Detect
- No Data Available
- Proposed Monitoring Well

- ⊕ Current Gun Position
- ⊕ Old Gun Position
- ⊕ Current Mortar Position
- ⊕ Old Mortar Position
- Combat Training Areas
- Military Training Areas
- Military Ranges

- Validated Non-Detect Water Supply Well
- Validated Detection Less than Maximum Contaminant Level/Health Advisories Water Supply Well
- Proposed Water Supply Well
- Water Table Contour (Feet NGVD) AMEC, September 2003
- - - Area of RDX Detections Greater than 2.0 ppb
 Central Impact Area 7/15/03 Demo 1 5/3/04
 SE Ranges (Jacobs Eng.) 10/21/04 NWC 8/17/04


 0 2,000 4,000
 Feet

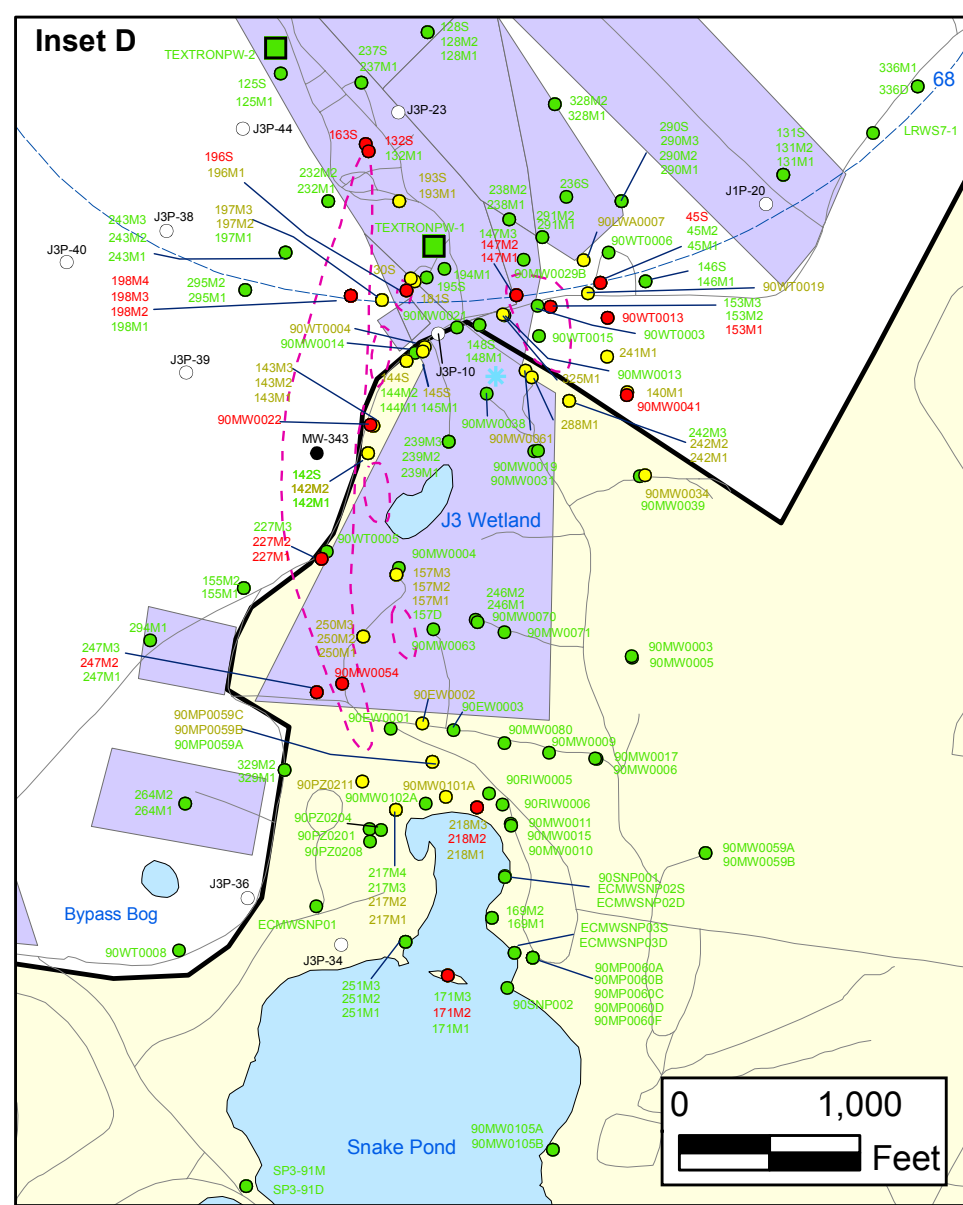
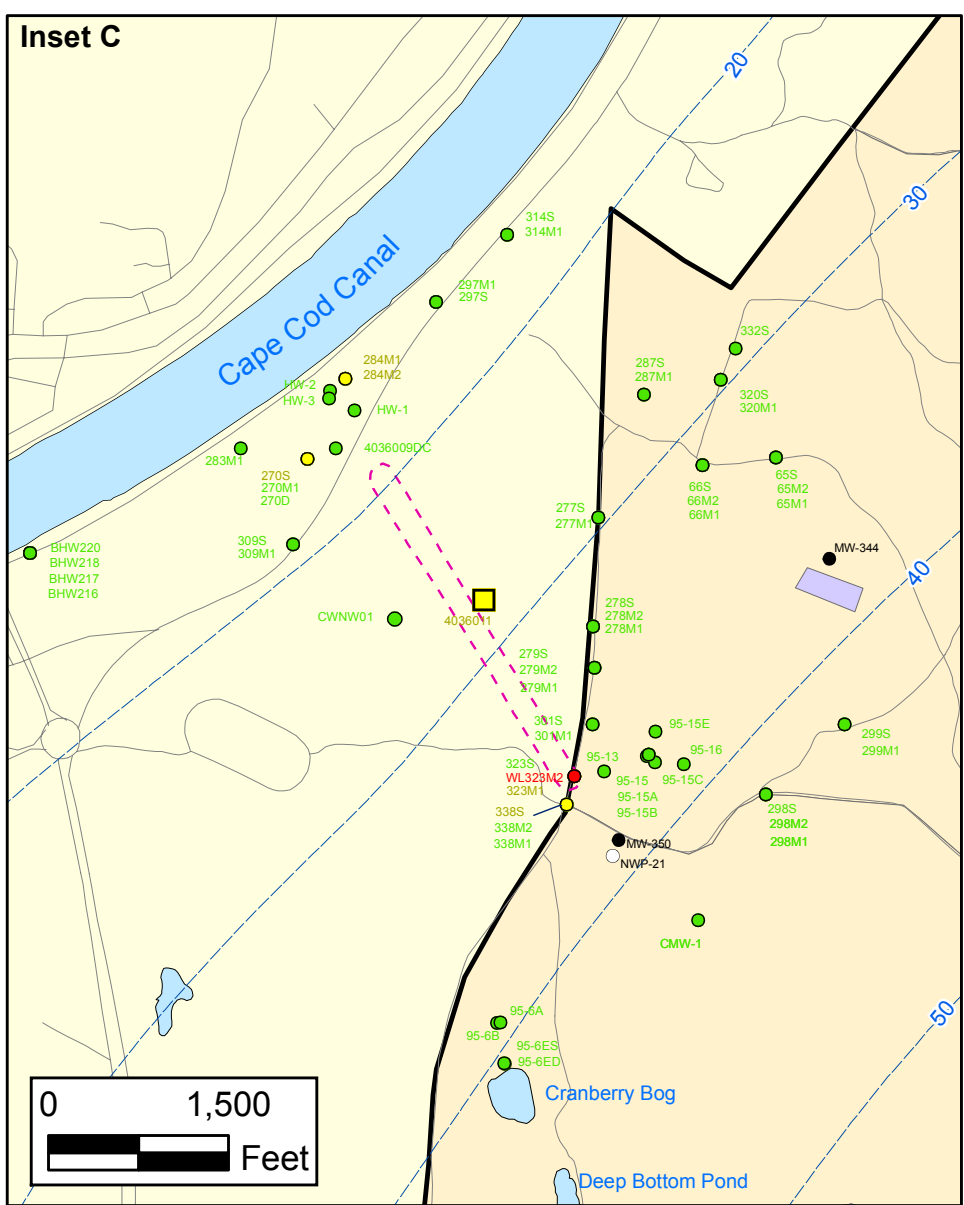
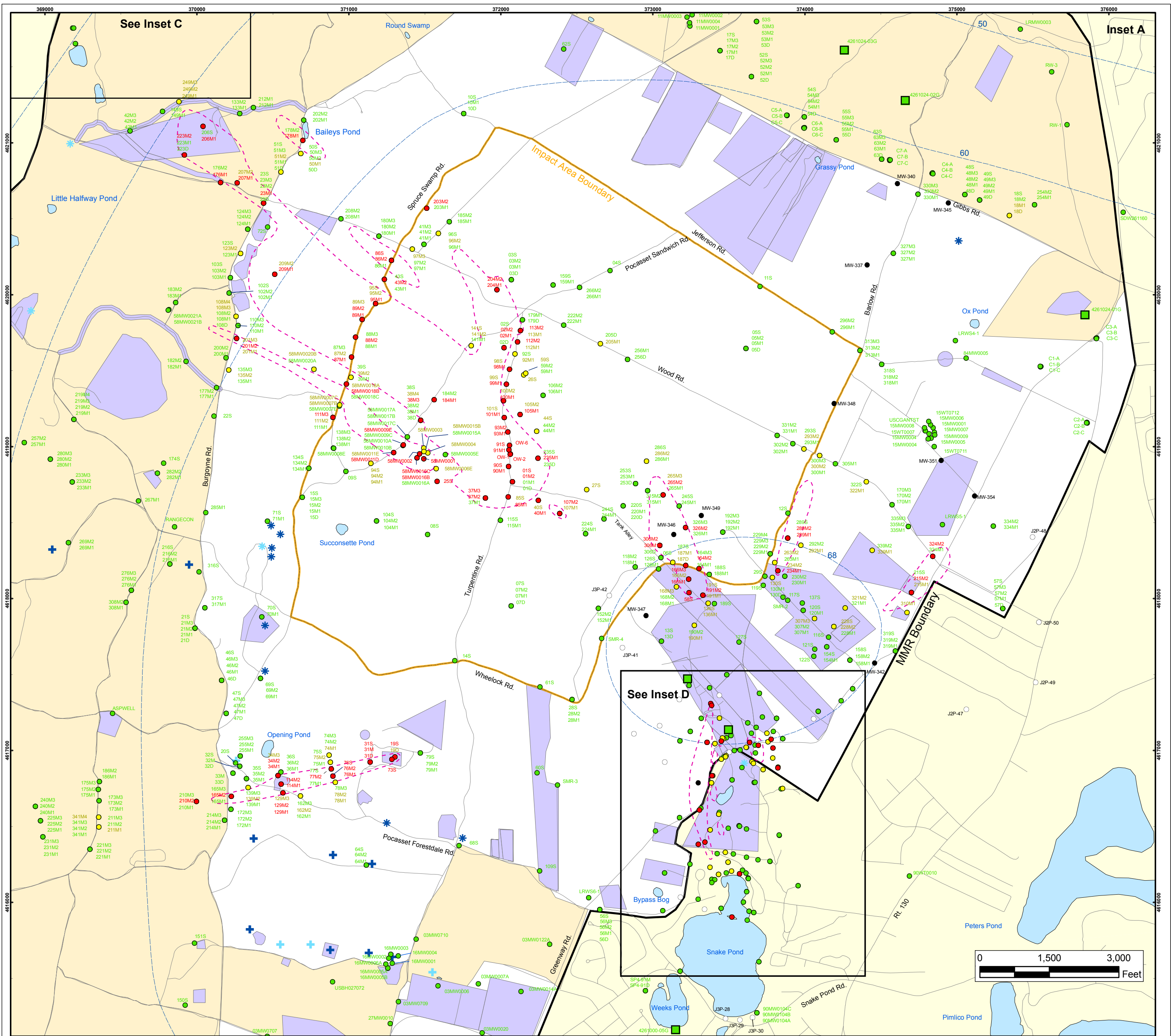
Sources & Notes
 Base map data from US Geological Survey
 7 1/2 minute Topographic Maps.
 Source: Office of Geographic and
 Environmental Information (MassGIS)
 Commonwealth of Massachusetts
 Executive Office of Environmental Affairs

DRAFT
 AMEC Earth & Environmental, Inc.
 Westford, Massachusetts

**Explosives in Groundwater Compared to
 Maximum Contaminant Level/Health Advisories
 Validated Data as of 10/29/04**

**FIGURE
 1**

J:\GIS\Nov2004\Monthly1_Exp\Exp_overall.pdf
 G:\MMR_COE\Work2004\Monthly\Nov2004\1_Exp\Exp_overall.mxd
 November 8, 2004 DNB JBB CHK: CH JPB



Explosives in Groundwater Compared to Maximum Contaminant Level/Health Advisories

Validated Data as of 10/29/04

- Validated Detection Greater than or Equal to Maximum Contaminant Level/Health Advisories
- Validated Detection Less than Maximum Contaminant Level/Health Advisories
- Validated Non-Detect
- No Data Available
- Proposed Monitoring Well
- Military Training Areas
- Military Ranges
- + Current Gun Position
- * Current Mortar Position
- + Old Gun Position
- * Old Mortar Position
- Validated Non-Detect Water Supply Well
- Validated Detection Less than Maximum Contaminant Level/Health Advisories Water Supply Well
- Water Table Contour (Feet NGVD), AMEC, September 2003
- Area of RDX Detections Greater than 2.0 ppb*

Central Impact Area 7/15/03 Demo 1 5/3/04
 SE Ranges (Jacobs Eng.) 10/21/04 NWC 8/17/04

Impact Area Groundwater Study Program

DRAFT

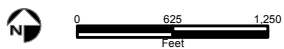
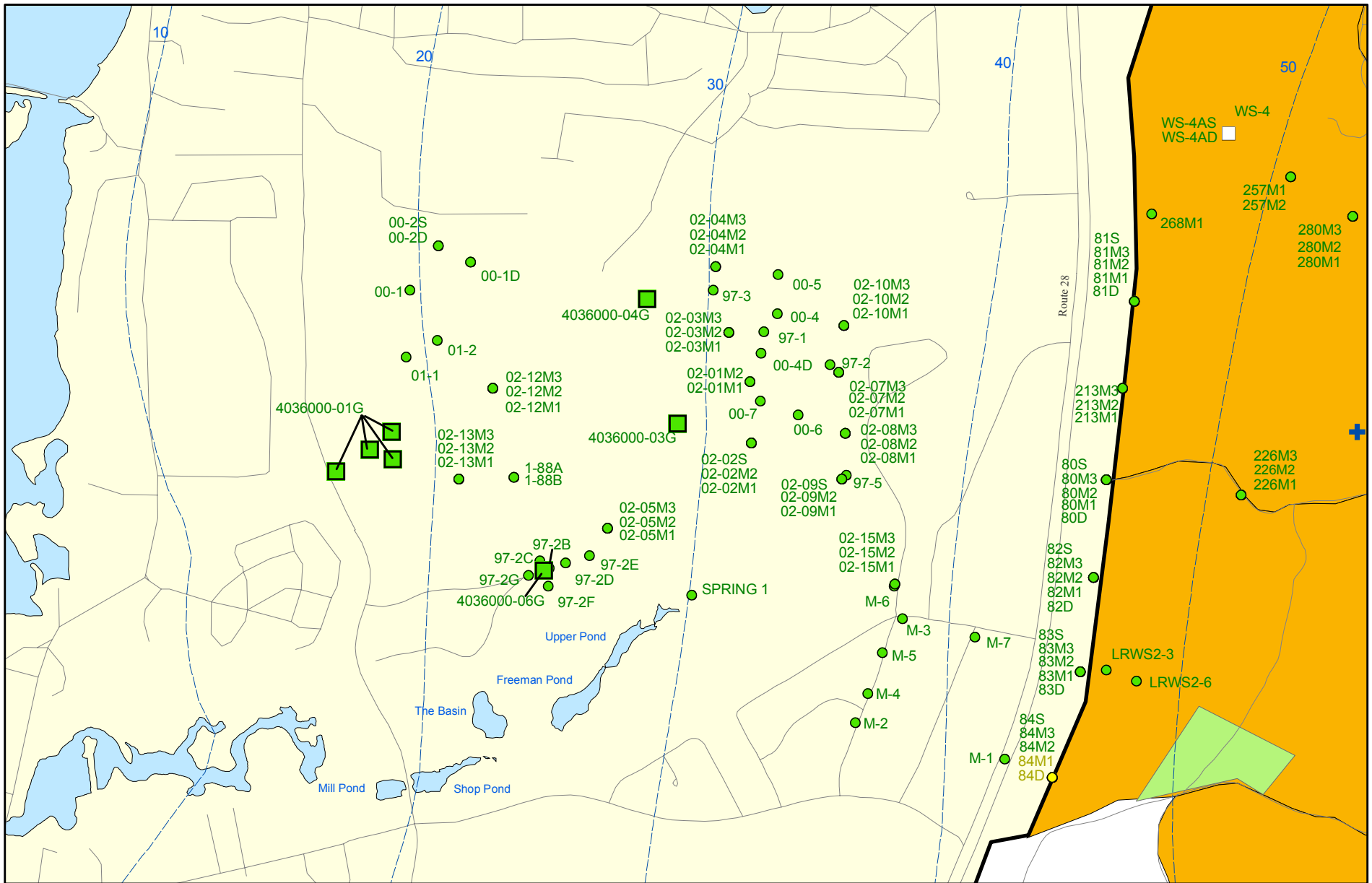
AMEC Earth & Environmental, Inc.
Westford, Massachusetts

Sources & Notes

Base map data from US Geological Survey
7 1/2 minute Topographic Maps
Source: Office of Geographic and
Environmental Information (MassGIS)
Commonwealth of Massachusetts
Executive Office of Environmental Affairs

FIGURE 1

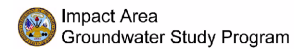
Inset Map



Sources & Notes:
 Base map data from US Geological Survey
 7 1/2 minute Topographic maps.
 Source: Office of Geographic and
 Environmental Information (MassGIS)
 Commonwealth of Massachusetts
 Executive Office of Environmental Affairs

- Validated Detection Less than Maximum Contaminant Level/Health Advisories
- Validated Non-Detect
- + Current Gun Position
- Validated Non-Detect Water Supply Well
- Proposed Water Supply Well
- Combat Training Areas
- Military Training Areas
- Water Table Contour (Feet NGVD)
AMEC, September 2003

**Explosives in Groundwater Compared to
 Maximum Contaminant Level/Health Advisories
 Validated Data as of 10/29/04**



AMEC Earth & Environmental, Inc.
 Westford, Massachusetts

DRAFT

Inset Map B

**FIGURE
 1**