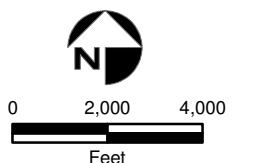


- Validated Detection Greater than or Equal to Maximum Contaminant Level/Health Advisories
- Validated Detection Less than Maximum Contaminant Level/Health Advisories
- Validated Non-Detect
- No Data Available
- Proposed Monitoring Well

- ⊕ Current Gun Position
- ⊕ Current Mortar Position
- ⊕ Old Gun Position
- ⊕ Old Mortar Position
- Combat Training Areas
- Military Training Areas
- Military Ranges

- Validated Non-Detect Water Supply Well
- Validated Detection Less than Maximum Contaminant Level/Health Advisories Water Supply Well
- Proposed Water Supply Well
- Water Table Contour (Feet NGVD) AMEC, September 2003
- - - Area of RDX Detections Greater than 2.0 ppb
 Central Impact Area 7/15/03 Demo 1 5/3/04
 SE Ranges (Jacobs Eng.) 10/21/04 NWC 8/17/04



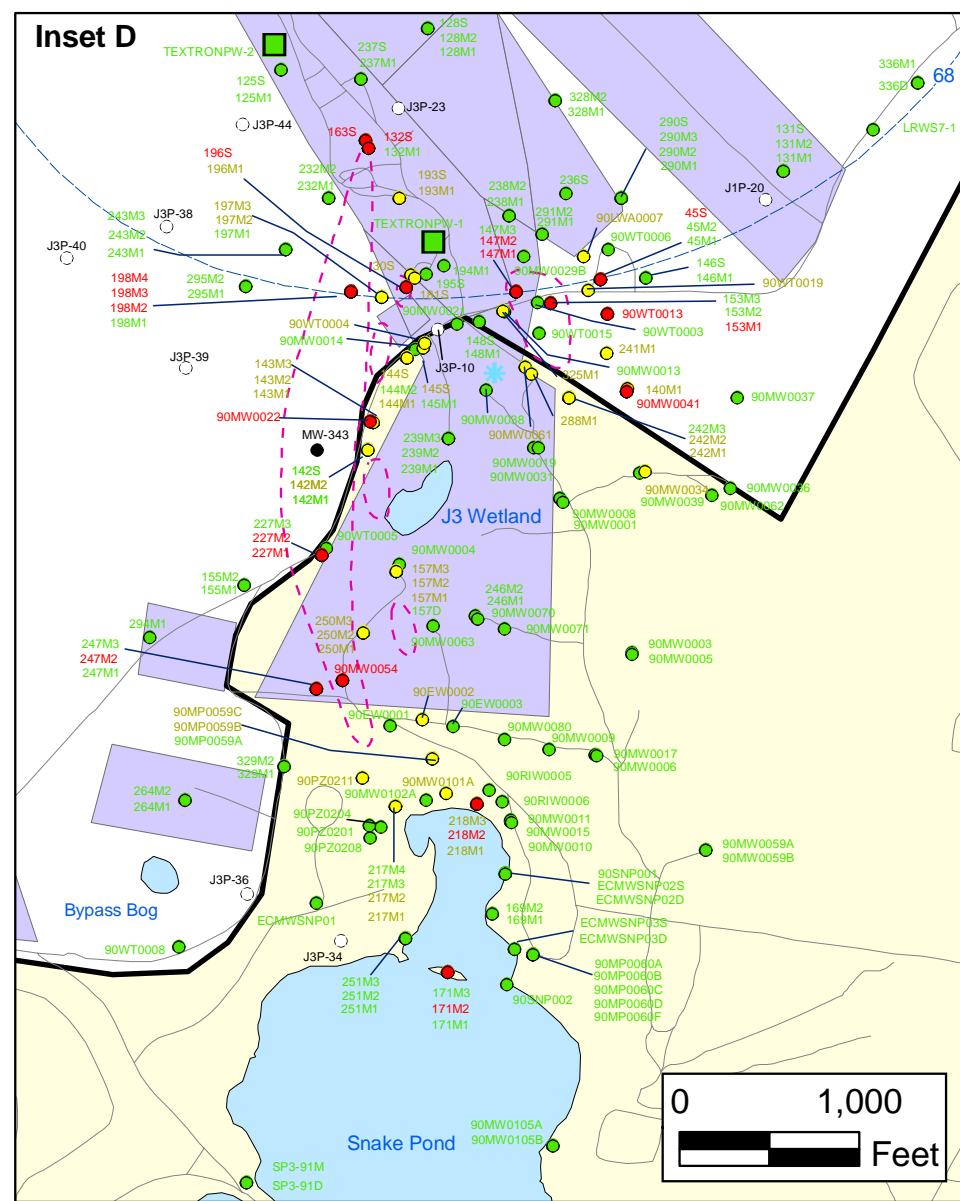
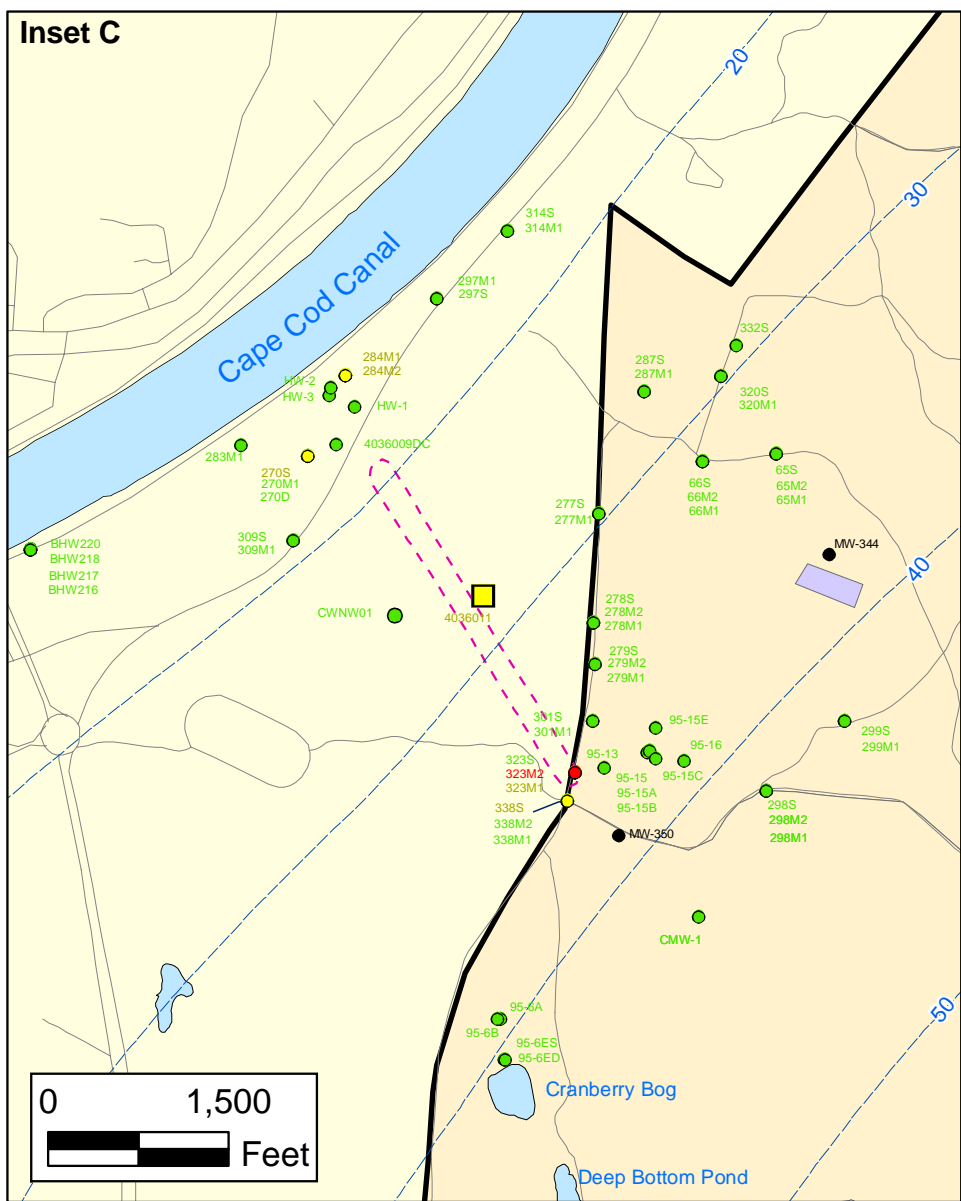
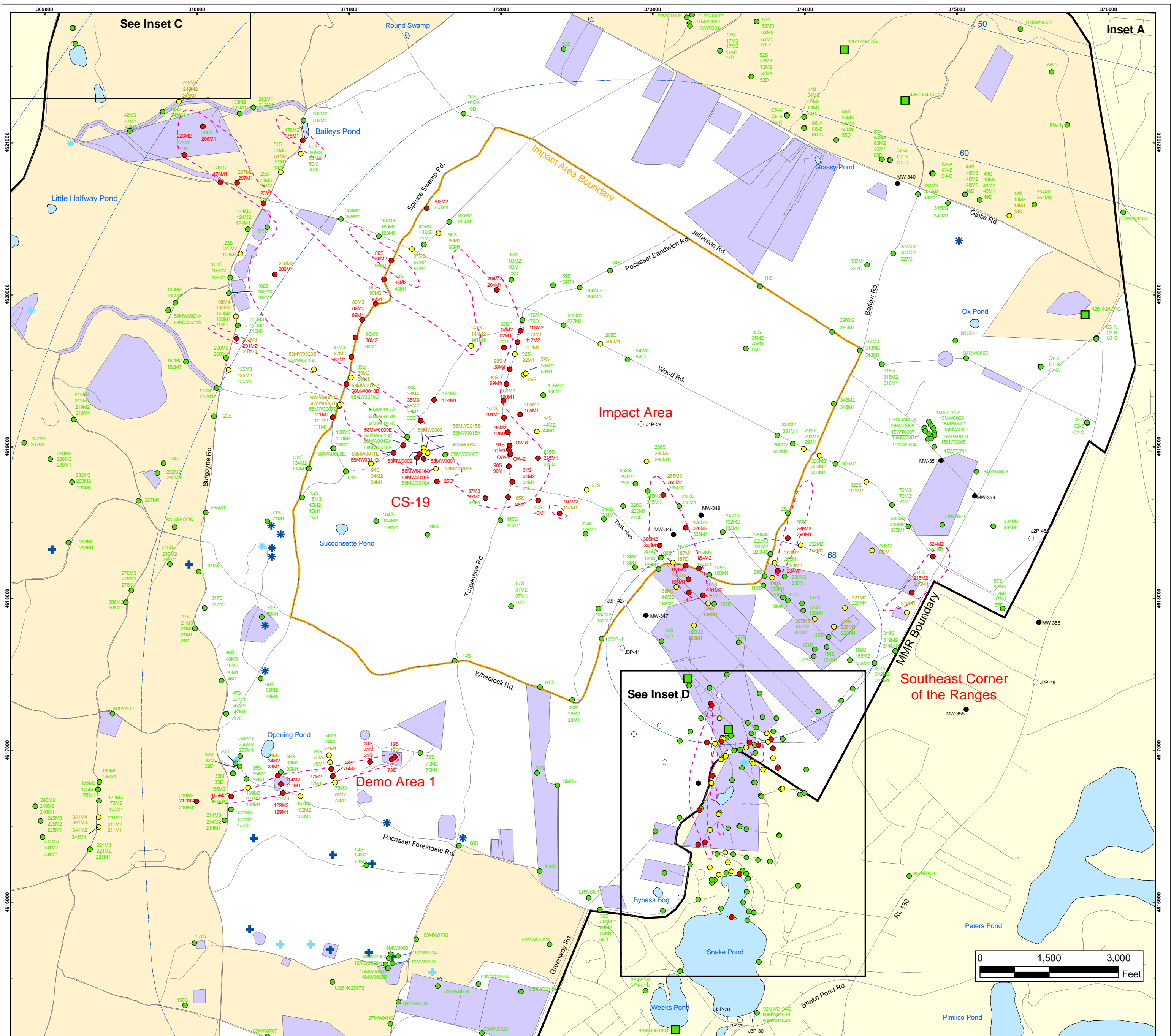
Sources & Notes
 Base map data from US Geological Survey
 7 1/2 minute Topographic Maps
 Source: Office of Geographic and Environmental Information (MassGIS)
 Commonwealth of Massachusetts
 Executive Office of Environmental Affairs

DRAFT
 AMEC Earth & Environmental, Inc.
 Westford, Massachusetts

**Explosives in Groundwater Compared to
 Maximum Contaminant Level/Health Advisories
 Validated Data as of 11/24/04**

**FIGURE
 1**

J:\GIS\Dec2004\Monthly\1_Exp\Exp_overall.pdf
 G:\MMR_COE\Work2004\Monthly\Dec2004\1_Exp\Exp_overall.mxd
 December 3, 2004 DNB JBB CHK: CH JPB



Explosives in Groundwater Compared to Maximum Contaminant Level/Health Advisories

Validated Data as of 11/24/04

- Validated Detection Greater than or Equal to Maximum Contaminant Level/Health Advisories
- Validated Detection Less than Maximum Contaminant Level/Health Advisories
- Validated Non-Detect
- No Data Available
- Proposed Monitoring Well
- Military Training Areas
- Military Ranges
- + Current Gun Position
- * Current Mortar Position
- + Old Gun Position
- * Old Mortar Position
- Validated Non-Detect Water Supply Well
- Validated Detection Less than Maximum Contaminant Level/Health Advisories Water Supply Well
- Water Table Contour (Feet NGVD), AMEC, September 2003
- Area of RDX Detections Greater than 2.0 ppb*

Central Impact Area 7/15/03 Demo 1 5/3/04
 SE Ranges (Jacobs Eng.) 10/21/04 NWC 8/17/04

**Impact Area
Groundwater Study Program**

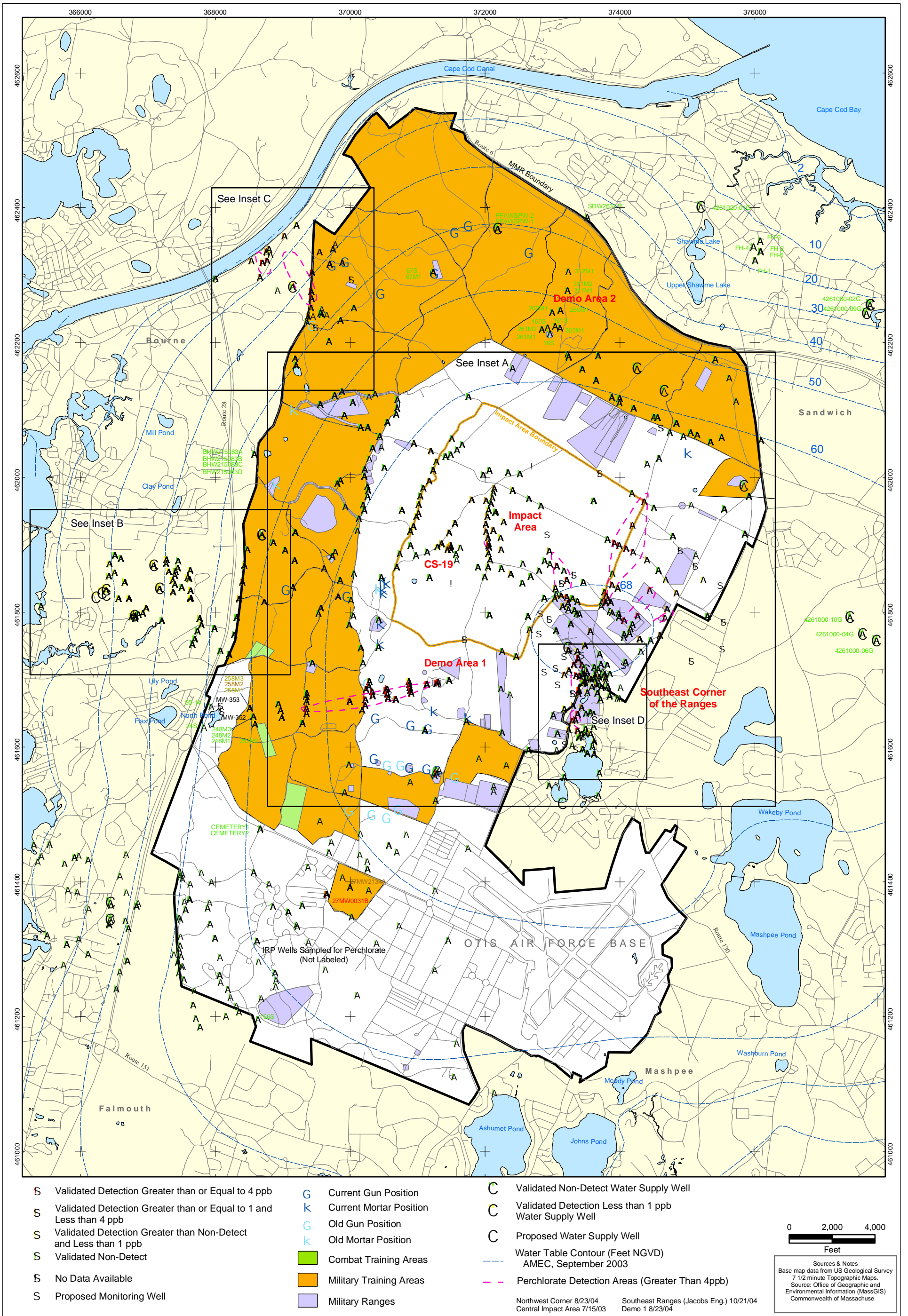
DRAFT

AMEC Earth & Environmental, Inc.
Westford, Massachusetts

**FIGURE
1**

Inset Map

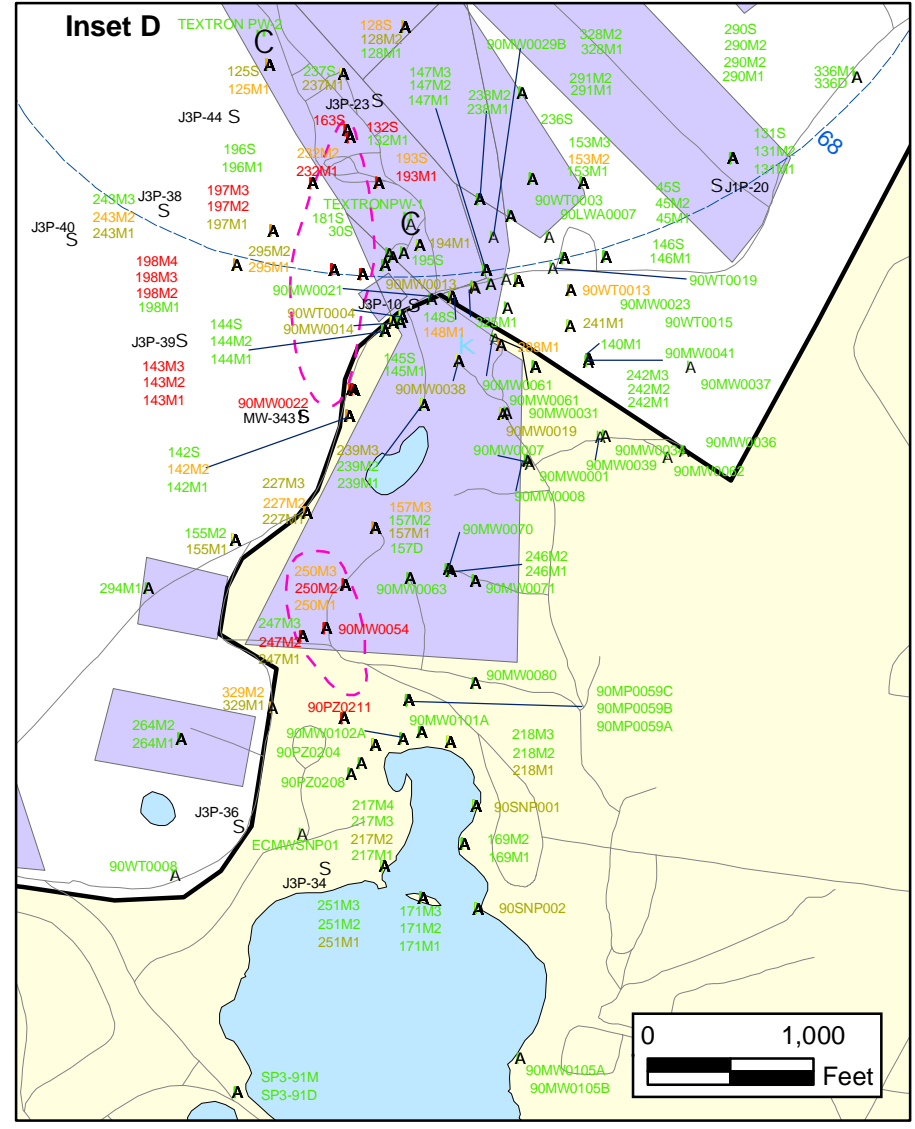
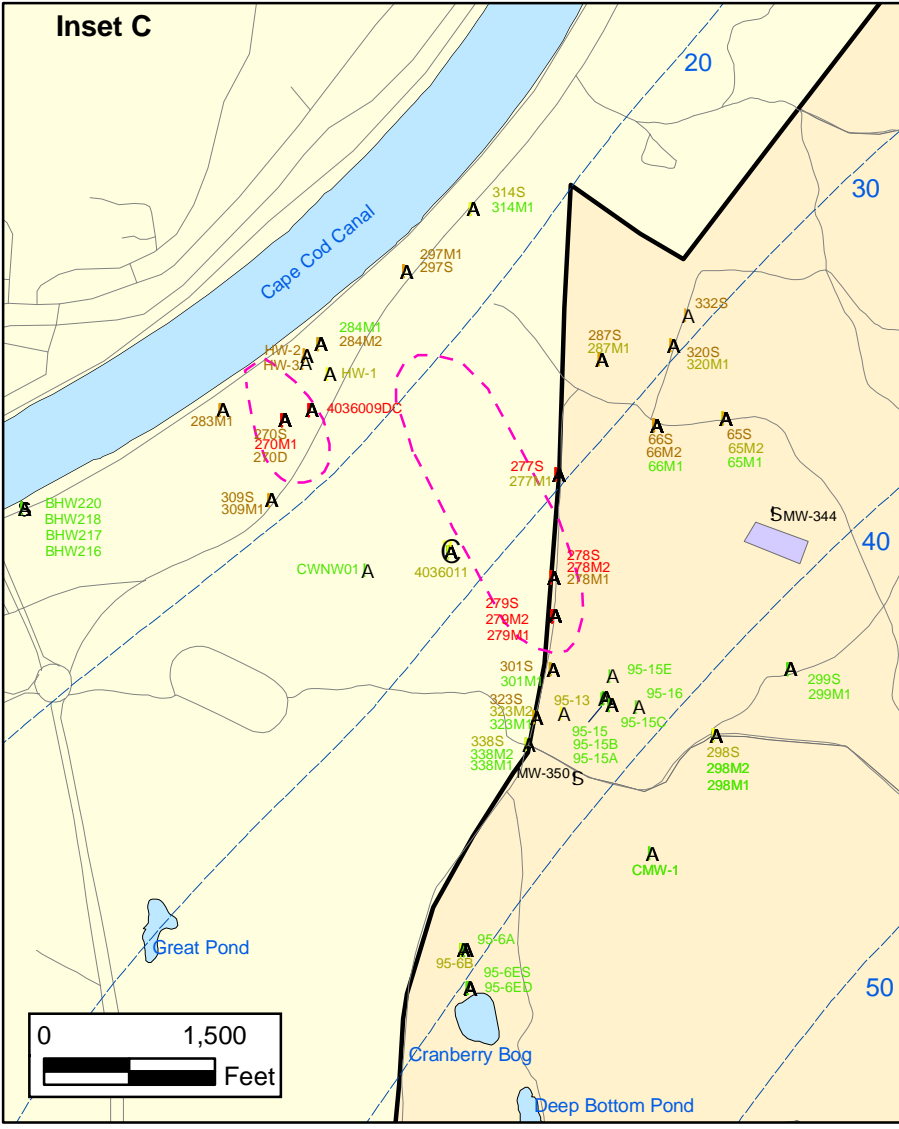
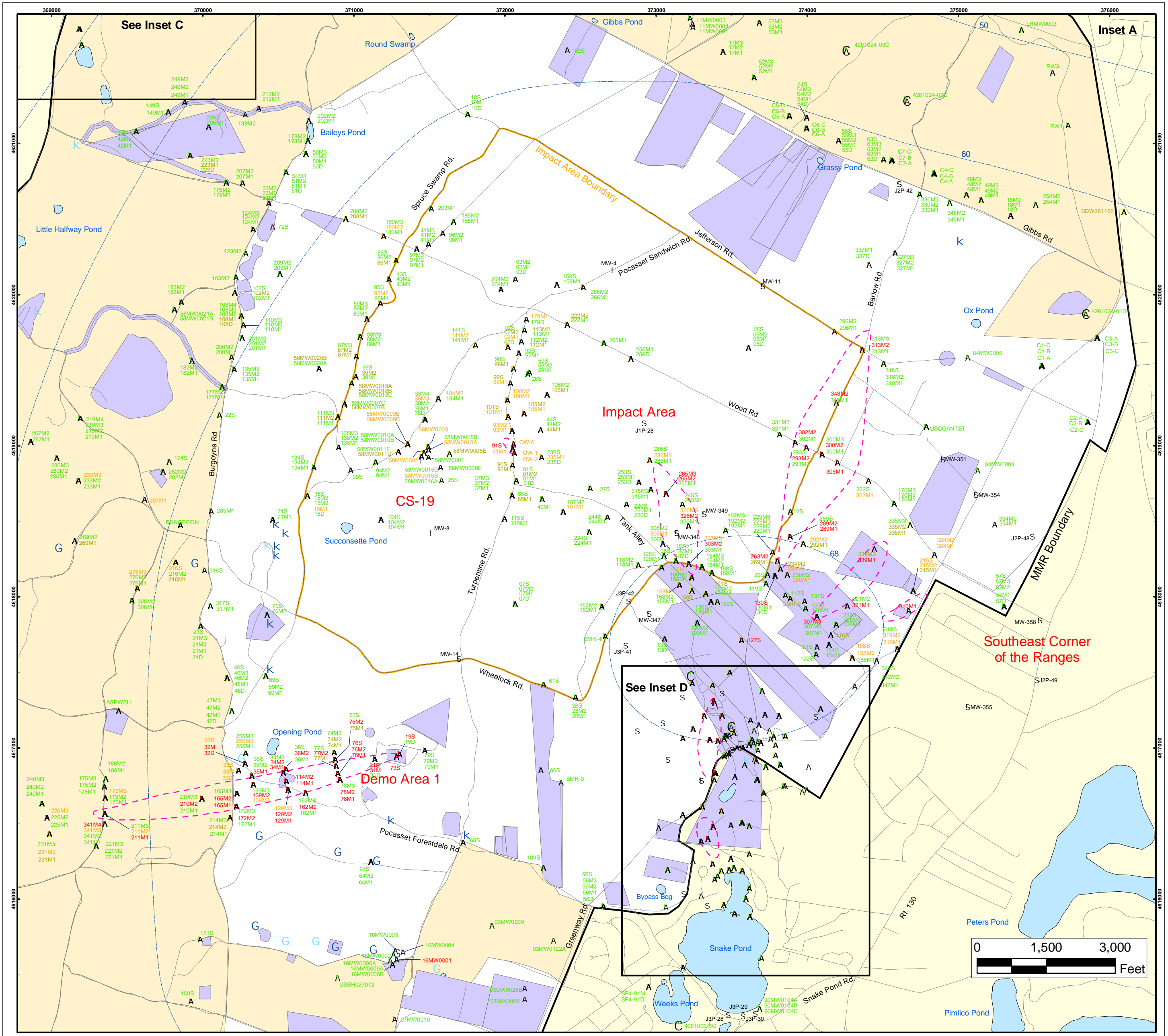
Sources & Notes
 Base map data from US Geological Survey
 7 1/2 minute Topographic Maps
 Source: Office of Geographic and
 Environmental Information (MassGIS)
 Commonwealth of Massachusetts
 Executive Office of Environmental Affairs



DRAFT
 AMEC Earth & Environmental, Inc.
 Westford, Massachusetts

**Perchlorate in Groundwater
 Compared to a 4 ppb Concentration
 Validated Data as of 11/24/04**

**FIGURE
 8**



Perchlorate in Groundwater Compared to a 4 PPB Concentration Validated Data as of 11/24/04

- S Validated Detection Greater than or Equal to 4 ppb
- S Validated Detection Greater than or Equal to 1 and Less than 4 ppb
- S Validated Detection Less than 1 ppb
- S Validated Non-Detect
- A No Data Available
- (Proposed Monitoring Well
- Military Training Areas
- Military Ranges
- G Current Gun Position
- K Current Mortar Position
- G Old Gun Position
- K Old Mortar Position
- Validated Non-Detect Water Supply Well
- Validated Detection Less Than 1 ppb Water Supply Well
- Water Table Contour (Feet NGVD), AMEC, September 2003
- Perchlorate Detection Areas Greater than 4ppb*

*Southeast Ranges 10/21/04; Central Impact Area 7/15/03; Demo 1 8/23/04; North-West Corner 8/23/04

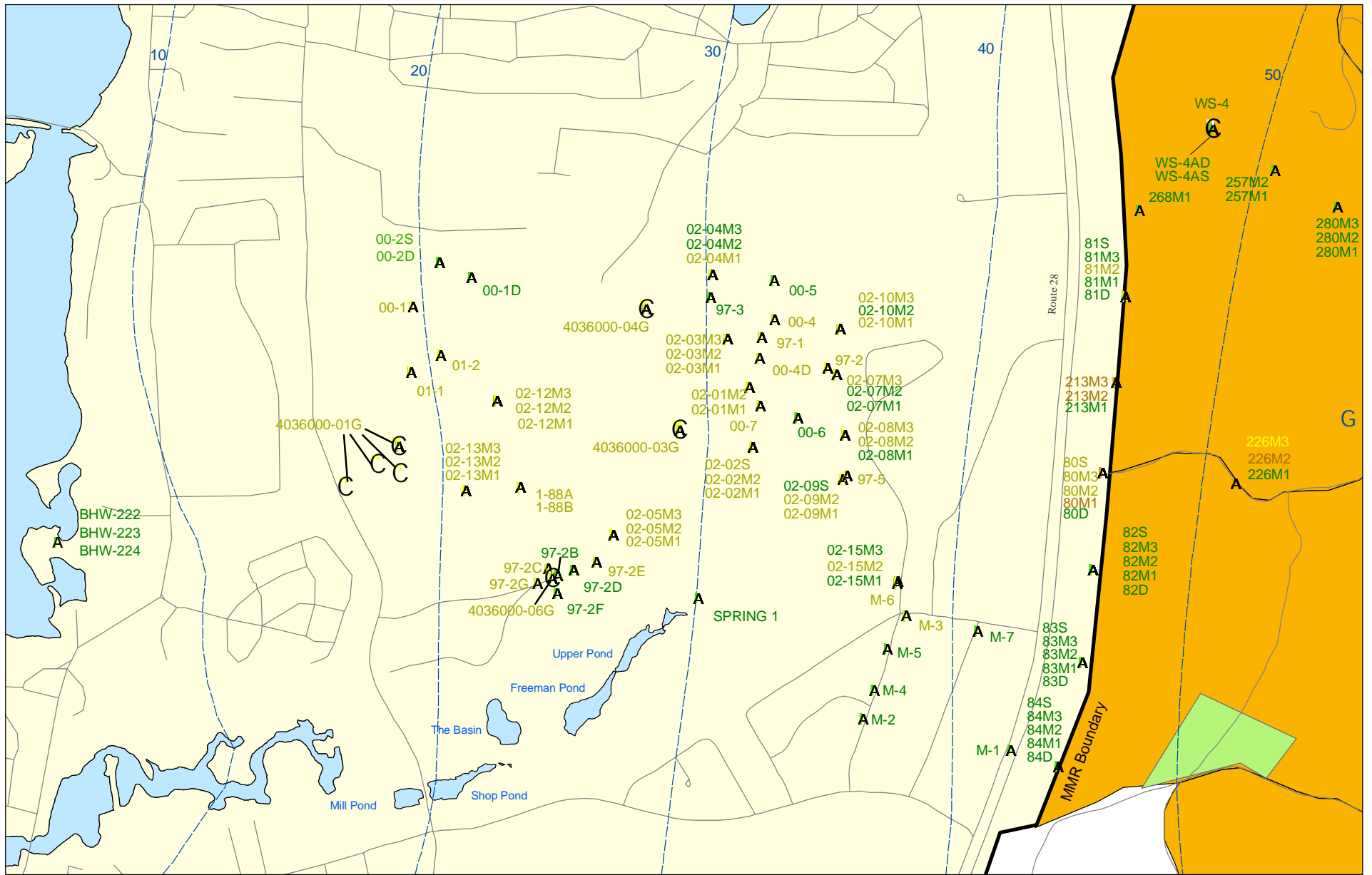
**Impact Area
Groundwater Study Program**

DRAFT

AMEC Earth & Environmental, Inc.
Westford, Massachusetts

**FIGURE
8**

Inset Map



C Validated Detection Less than 1 ppb
 Water Supply Well
 C Proposed Water Supply Well
 Validated Detection Greater than Non-Detect and Less than 1 ppb
 Validated Non-Detect
 Combat Training Areas
 Military Training Areas

**Perchlorate in Groundwater
 Compared to a 4 ppb Concentration
 Validated Data as of 11/24/04**