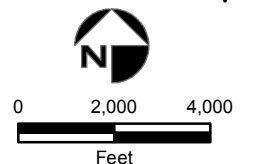


- Validated Detection Greater than or Equal to Maximum Contaminant Level/Health Advisories
- Validated Detection Less than Maximum Contaminant Level/Health Advisories
- Validated Non-Detect
- No Data Available
- Proposed Monitoring Well

- ⊕ Current Gun Position
- ⊕ Current Mortar Position
- ⊕ Old Gun Position
- ⊕ Old Mortar Position
- Combat Training Areas
- Military Training Areas
- Military Ranges

- Validated Non-Detect Water Supply Well
- Validated Detection Less than Maximum Contaminant Level/Health Advisories Water Supply Well
- Proposed Water Supply Well
- Water Table Contour (Feet NGVD) AMEC, September 2003
- Area of RDX Detections Greater than 2.0 ppb
- 2.0 ppb RDX Concentration Contour



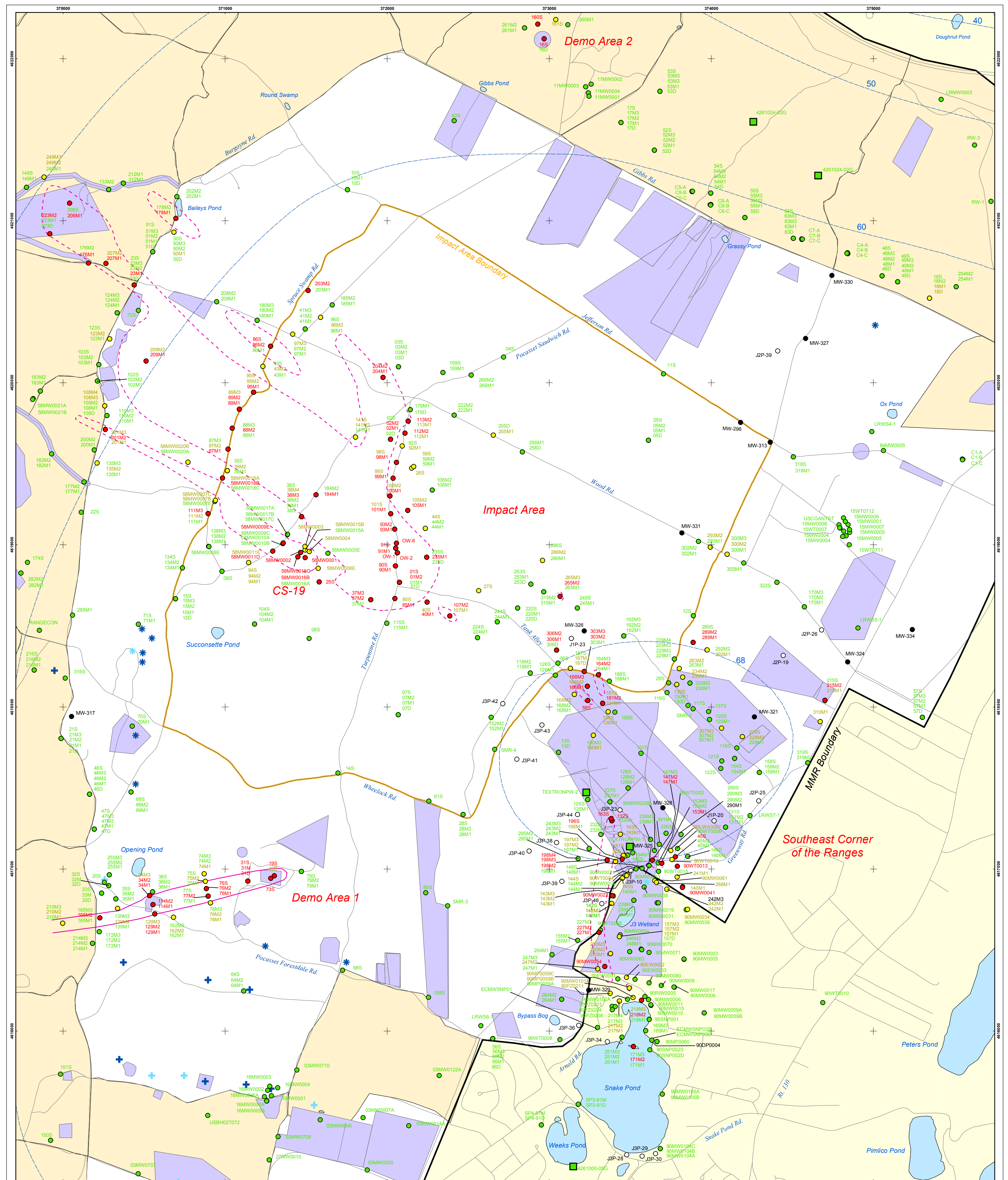
Sources & Notes
 Base map data from US Geological Survey
 7 1/2 minute Topographic Maps.
 Source: Office of Geographic and Environmental Information (MassGIS)
 Commonwealth of Massachusetts
 Executive Office of Environmental Affairs

DRAFT

AMEC Earth & Environmental, Inc.
 Westford, Massachusetts

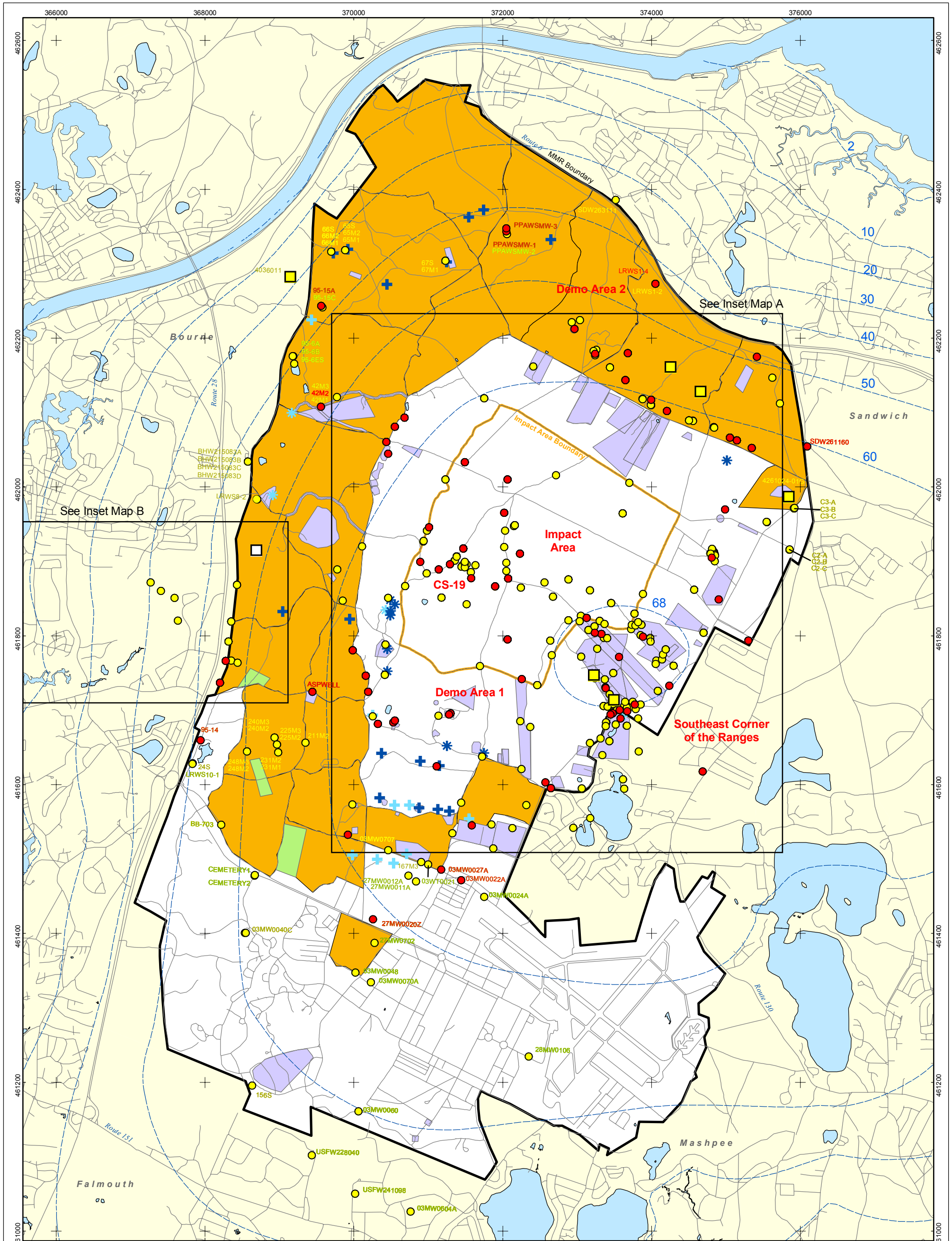
Explosives in Groundwater Compared to Maximum Contaminant Level/Health Advisories Validated Data as of 06/25/04

FIGURE 1

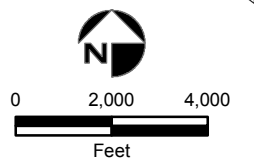


- | | | | |
|--|----------------------------|---------------------------|---|
| ● Validated Detection Greater than or Equal to Maximum Contaminant Level/Health Advisories | ○ No Data Available | ⊕ Current Gun Position | ■ Validated Non-Detect Water Supply Well |
| ● Validated Detection Less than Maximum Contaminant Level/Health Advisories | ○ Proposed Monitoring Well | ⊕ Current Mortar Position | --- Water Table Contour (Feet NGVD) |
| ● Validated Non-Detect | ■ Military Training Areas | ⊕ Old Gun Position | --- AMEC, September 2003 |
| | ■ Military Ranges | ⊕ Old Mortar Position | - - - Area of RDX Detections Greater than 2.0 ppb |
| | | | --- 2.0 ppb RDX Concentration Contour |

DRAFT
Explosives in Groundwater Compared to Maximum Contaminant Level/Health Advisories Validated Data as of 06/25/04
Impact Area Groundwater Study Program Inset Map A
FIGURE 1



- | | | |
|--|---------------------------|---|
| ● Validated Detection Greater than or Equal to Maximum Contaminant Level/Health Advisories | ⊕ Current Gun Position | ■ Validated Detection Less than Maximum Contaminant Level/Health Advisories |
| ● Validated Detection Less than Maximum Contaminant Level/Health Advisories | ⊕ Current Mortar Position | □ Proposed Water Supply Well |
| ● No Data Available | ⊕ Old Gun Position | --- Water Table Contour (Feet above NGVD) |
| | ⊕ Old Mortar Position | --- AMEC, September 2003 |
| | ■ Combat Training Areas | |
| | ■ Military Training Areas | |
| | ■ Military Ranges | |

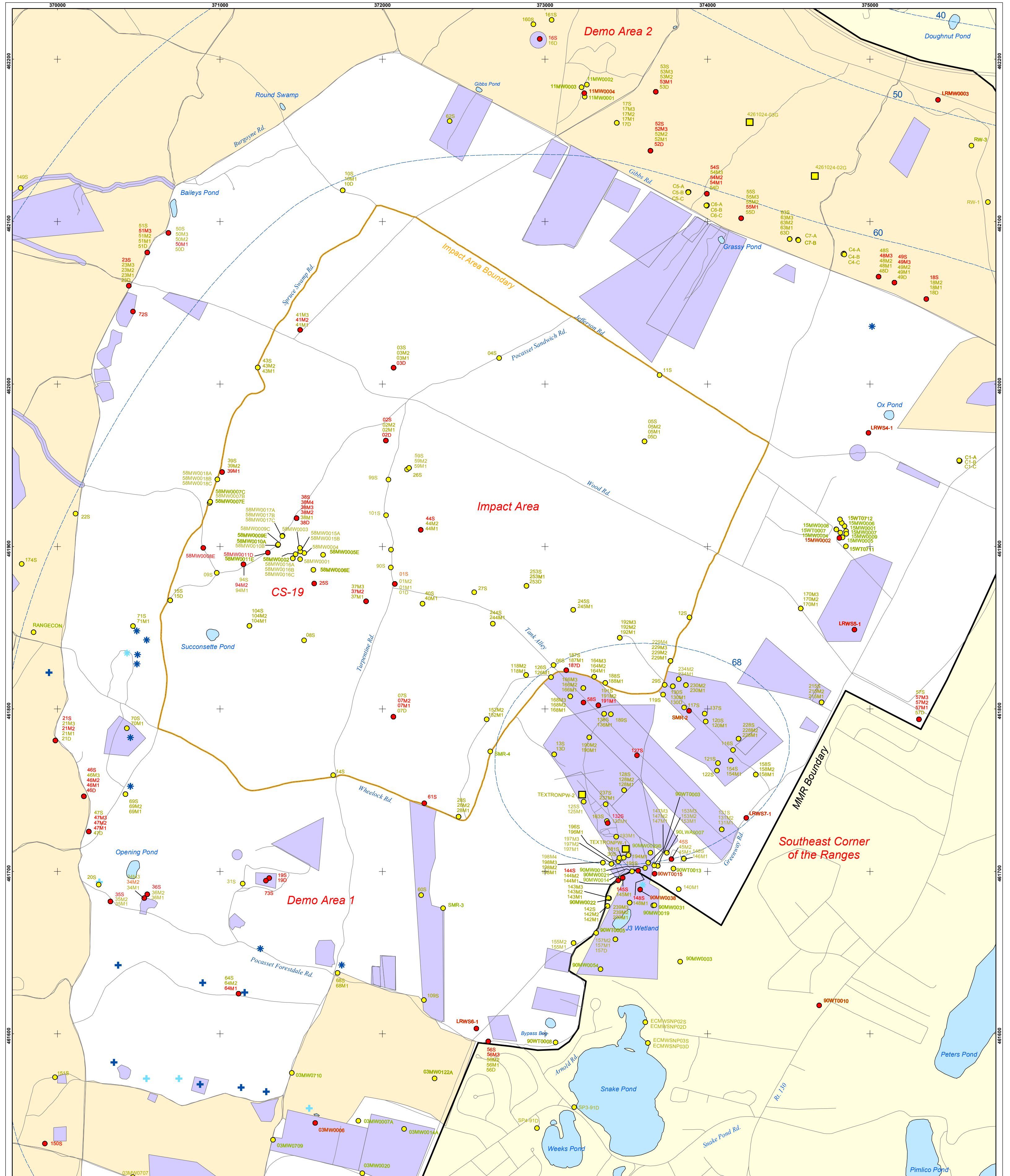


Sources & Notes
 Base map data from US Geological Survey
 7 1/2 minute Topographic Maps
 Source: Office of Geographic and Environmental Information (MassGIS)
 Commonwealth of Massachusetts
 Executive Office of Environmental Affairs

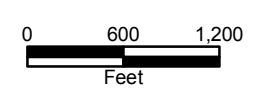
DRAFT
 AMEC Earth & Environmental, Inc.
 Westford, Massachusetts

**Metals in Groundwater Compared to
 Maximum Contaminant Level/Health Advisories
 Validated Data as of 06/25/04**

FIGURE
2



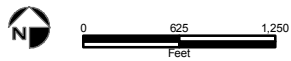
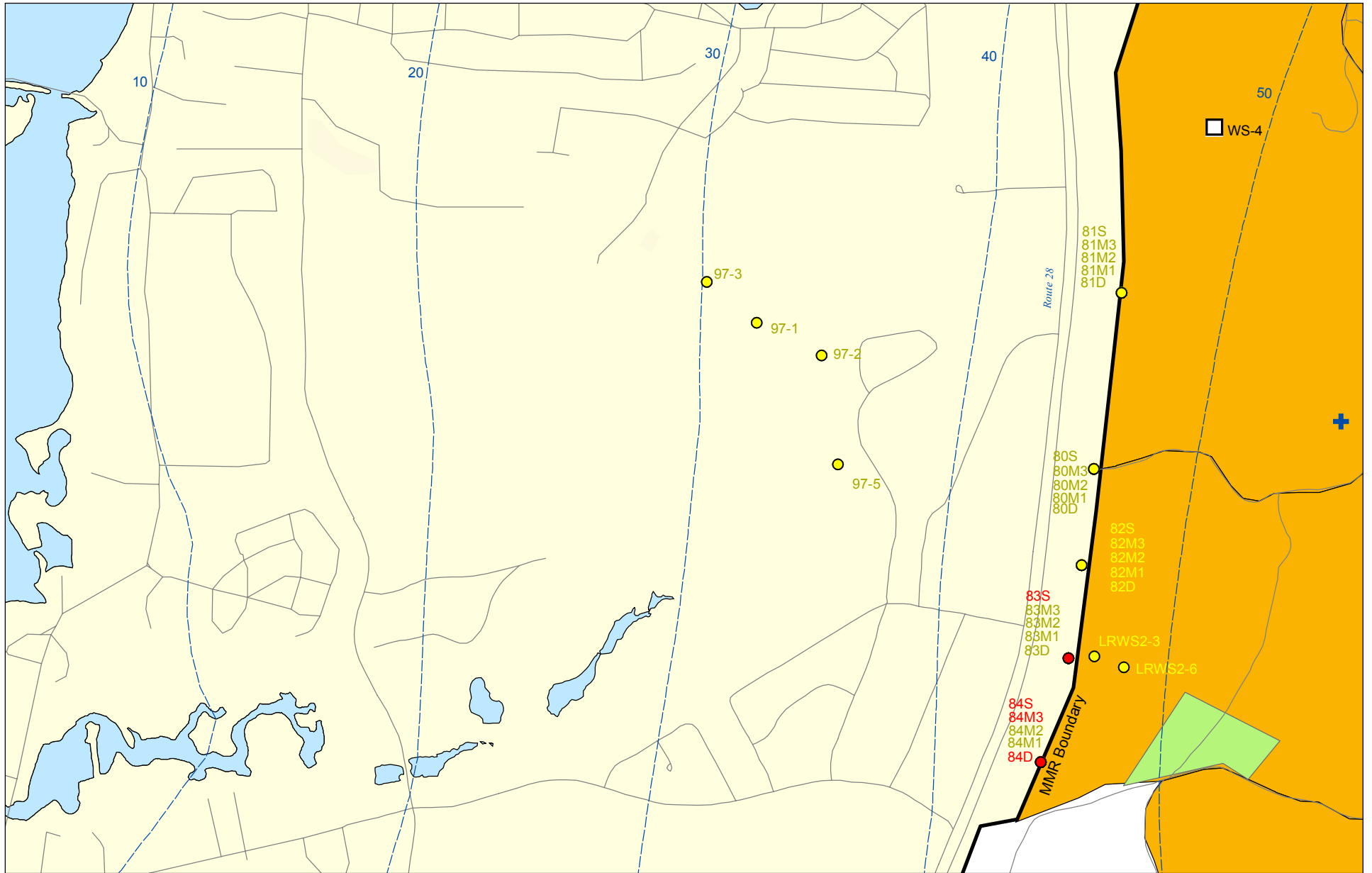
- Validated Detection Greater than or Equal to Maximum Contaminant Level/Health Advisories
- Validated Detection Less than Maximum Contaminant Level/Health Advisories
- No Data Available
- Military Training Areas
- Military Ranges
- + Current Gun Position
- * Current Mortar Position
- + Old Gun Position
- * Old Mortar Position
- Validated Detection Less than Maximum Contaminant Level/Health Advisories Water Supply Well
- Water Table Contour (Feet NGVD)
- AMEC, September 2003



Sources & Notes
 Base map data from US Geological Survey
 7 1/2 minute Topographic Maps
 Source: Office of Geographic and
 Environmental Information (MassGIS)
 Commonwealth of Massachusetts
 Executive Office of Environmental Affairs

DRAFT
 AMEC Earth & Environmental, Inc.
 Westford, Massachusetts

**Metals in Groundwater Compared to
 Maximum Contaminant Level/Health Advisories
 Validated Data as of 06/25/04**



Sources & Notes:
 Base map data from US Geological Survey
 7 1/2 minute Topographic maps.
 Source: Office of Geographic and
 Environmental Information (MassGIS)
 Commonwealth of Massachusetts
 Executive Office of Environmental Affairs

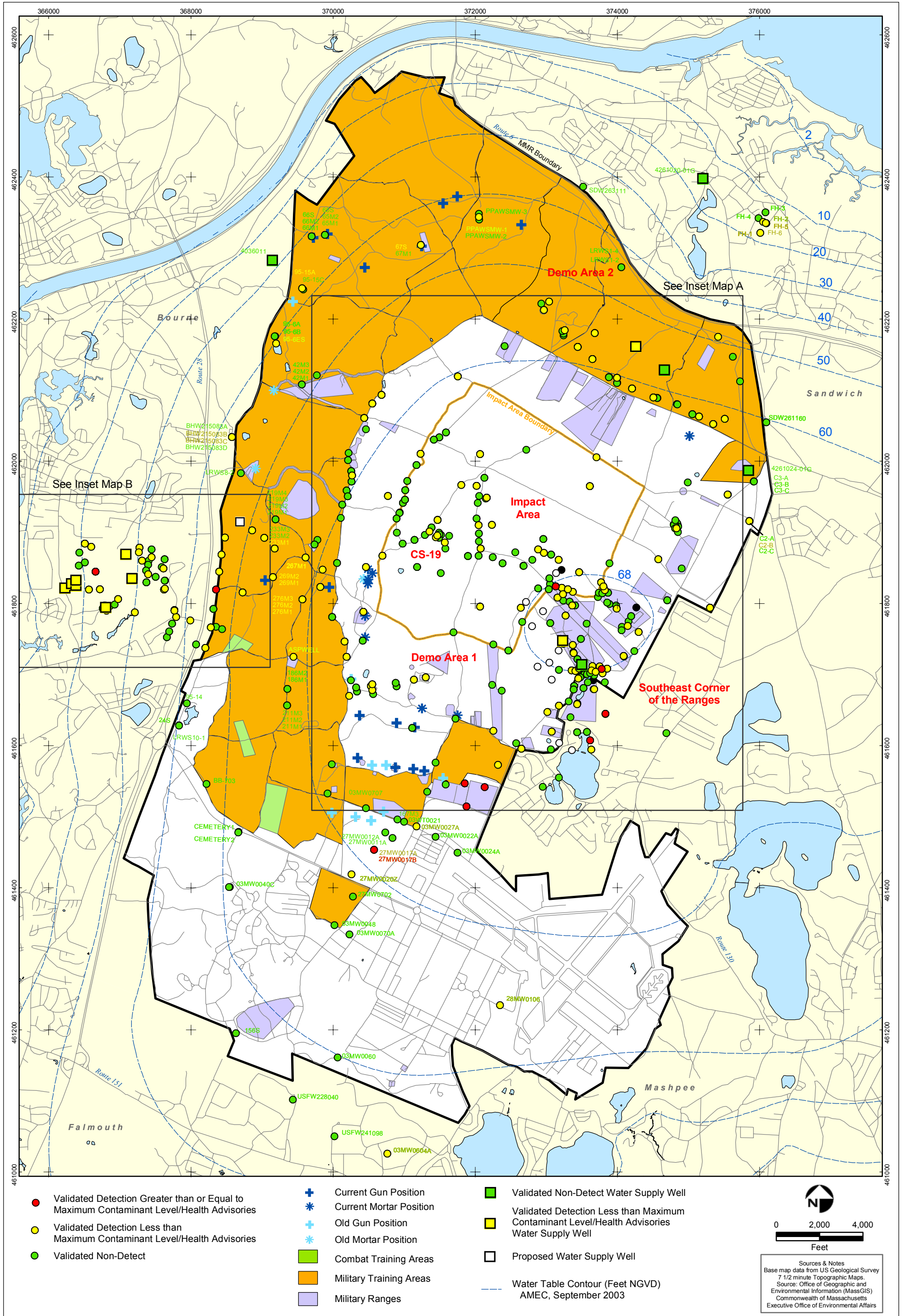
- Validated Detection Greater than or Equal to Maximum Contaminant Level/Health Advisories
- Validated Detection Less than Maximum Contaminant Level/Health Advisories
- ⊕ Current Gun Position
- Proposed Water Supply Well
- Combat Training Areas
- Military Training Areas
- - - Water Table Contour (Feet NGVD)
AMEC, September 2003

**Metals in Groundwater Compared to
 Maximum Contaminant Level/Health Advisories
 Validated Data as of 06/25/04**



AMEC Earth & Environmental, Inc.
 Westford, Massachusetts **DRAFT**

Inset Map B **FIGURE 2**

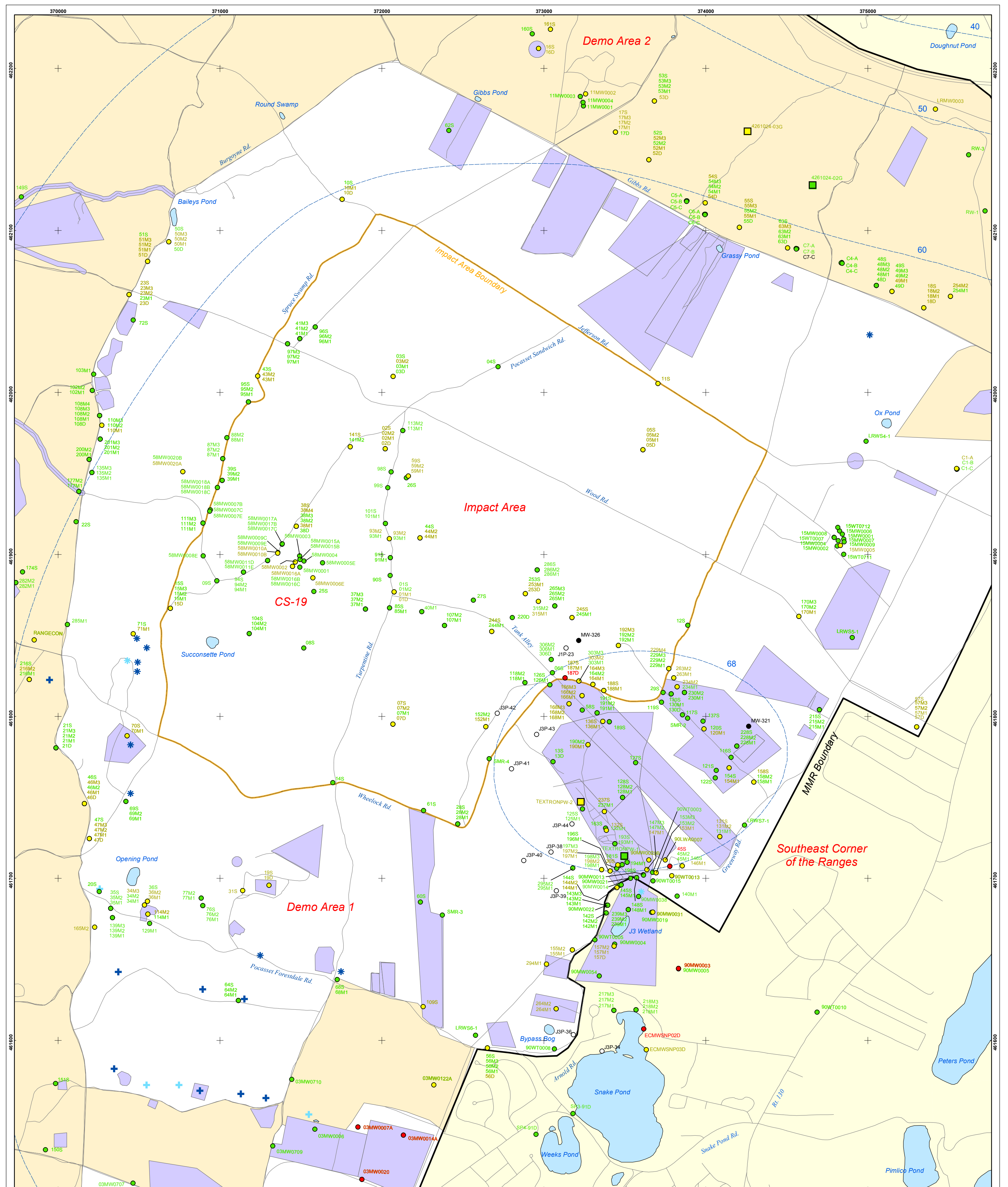


DRAFT

Volatile Organic Compounds (Excluding Chloroform) in Groundwater Compared to Maximum Contaminant Level/Health Advisories
Validated Data as of 06/25/04

AMEC Earth & Environmental, Inc.
 Westford, Massachusetts

FIGURE
3

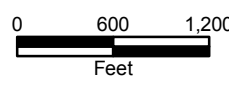


- Validated Detection Greater than or Equal to Maximum Contaminant Level/Health Advisories
- Validated Detection Less than Maximum Contaminant Level/Health Advisories
- Validated Non-Detect

- Military Training Areas
- Military Ranges

- ⊕ Current Gun Position
- ⊕ Current Mortar Position
- ⊕ Old Gun Position
- ⊕ Old Mortar Position

- Validated Non-Detect Water Supply Well
- Validated Detection Less than Maximum Contaminant Level/Health Advisories Water Supply Well
- Water Table Contour (Feet NGVD)

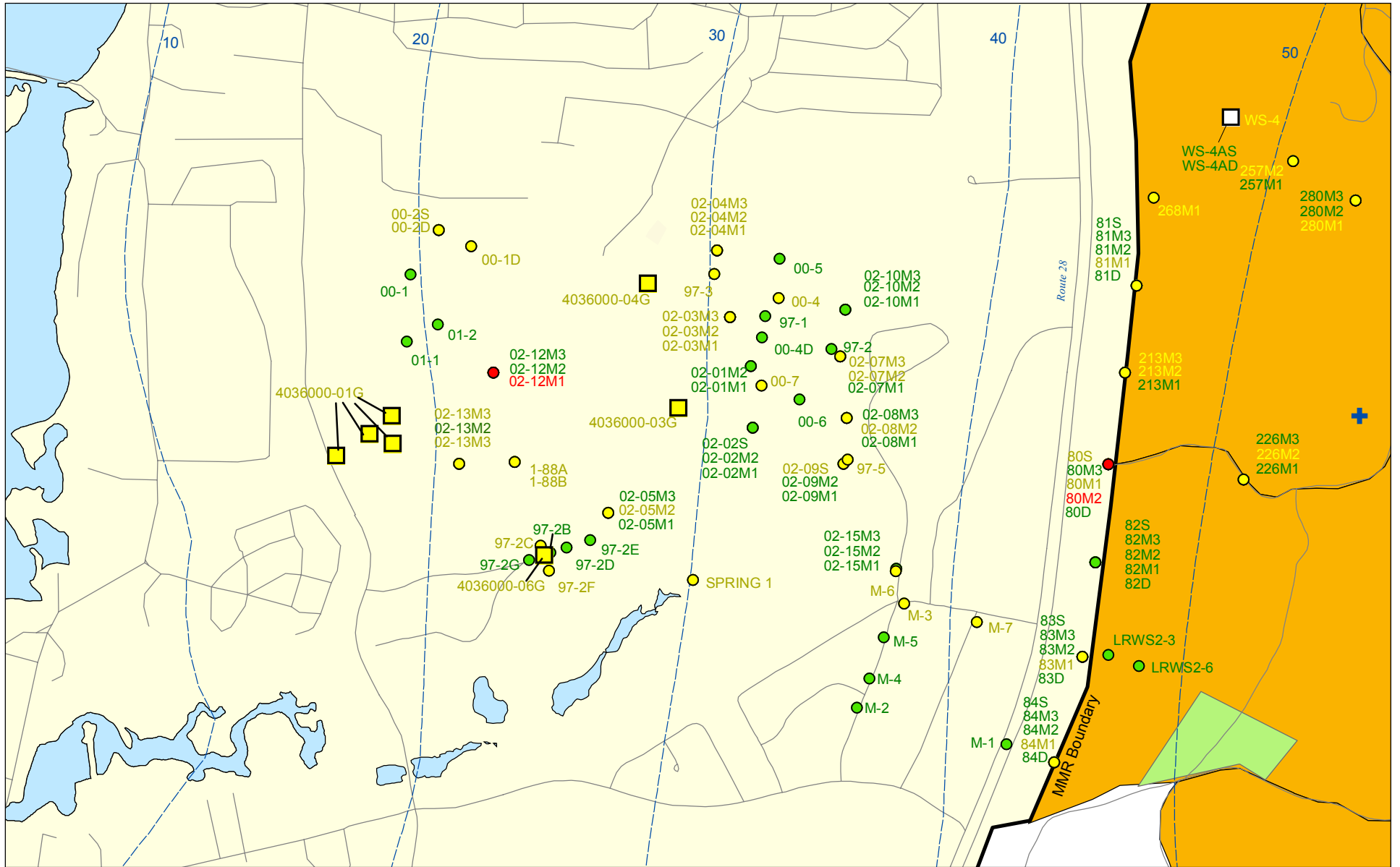


Sources & Notes
 Base map data from US Geological Survey
 7 1/2 minute Topographic Maps
 Source: Office of Geographic and Environmental Information (MassGIS)
 Commonwealth of Massachusetts
 Executive Office of Environmental Affairs

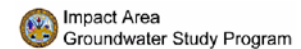
DRAFT
 AMEC Earth & Environmental, Inc.
 Westford, Massachusetts

**Volatile Organic Compounds (Excluding Chloroform) in Groundwater
 Compared to Maximum Contaminant Level/Health Advisories
 Validated Data as of 06/25/04**

**Impact Area
 Groundwater Study Program Inset Map A**



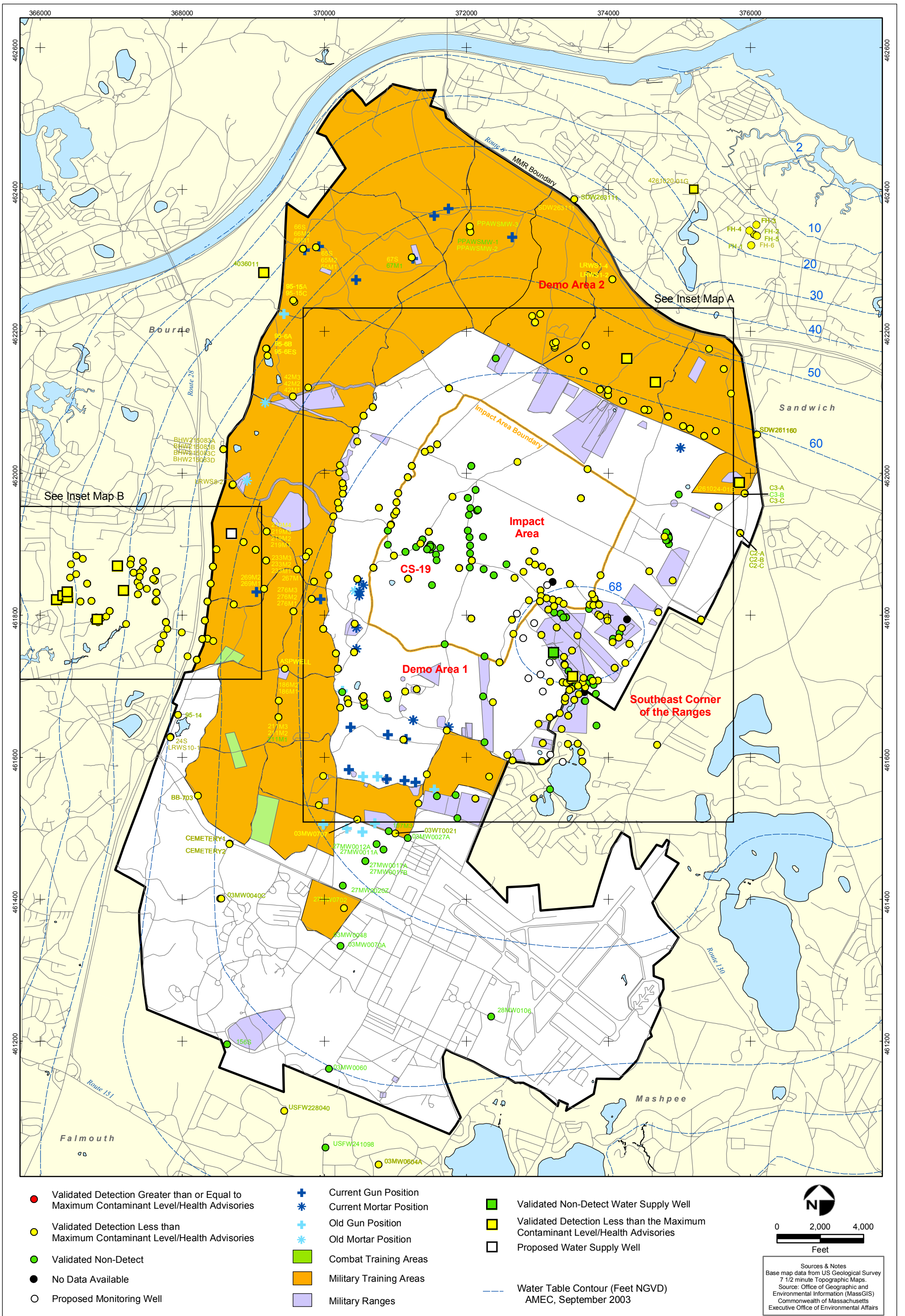
**Volatile Organic Compounds (Excluding Chloroform)
in Groundwater Compared to Maximum
Contaminant Level/Health Advisories
Validated Data as of 06/25/04**



Sources & Notes:
Base map data from US Geological Survey
7 1/2 minute Topographic maps.
Source: Office of Geographic and
Environmental Information (MassGIS)
Commonwealth of Massachusetts
Executive Office of Environmental Affairs

AMEC Earth & Environmental, Inc. **DRAFT**
Westford, Massachusetts

- Validated Detection Greater than or Equal to Maximum Contaminant Level/Health Advisories
- Validated Detection Less than Maximum Contaminant Level/Health Advisories
- Validated Non-Detect
- + Current Gun Position
- Validated Detection Less than Maximum Contaminant Level/Health Advisories Water Supply Well
- Proposed Water Supply Well
- Combat Training Areas
- Military Training Areas
- Water Table Contour (Feet NGVD)
AMEC, September 2003

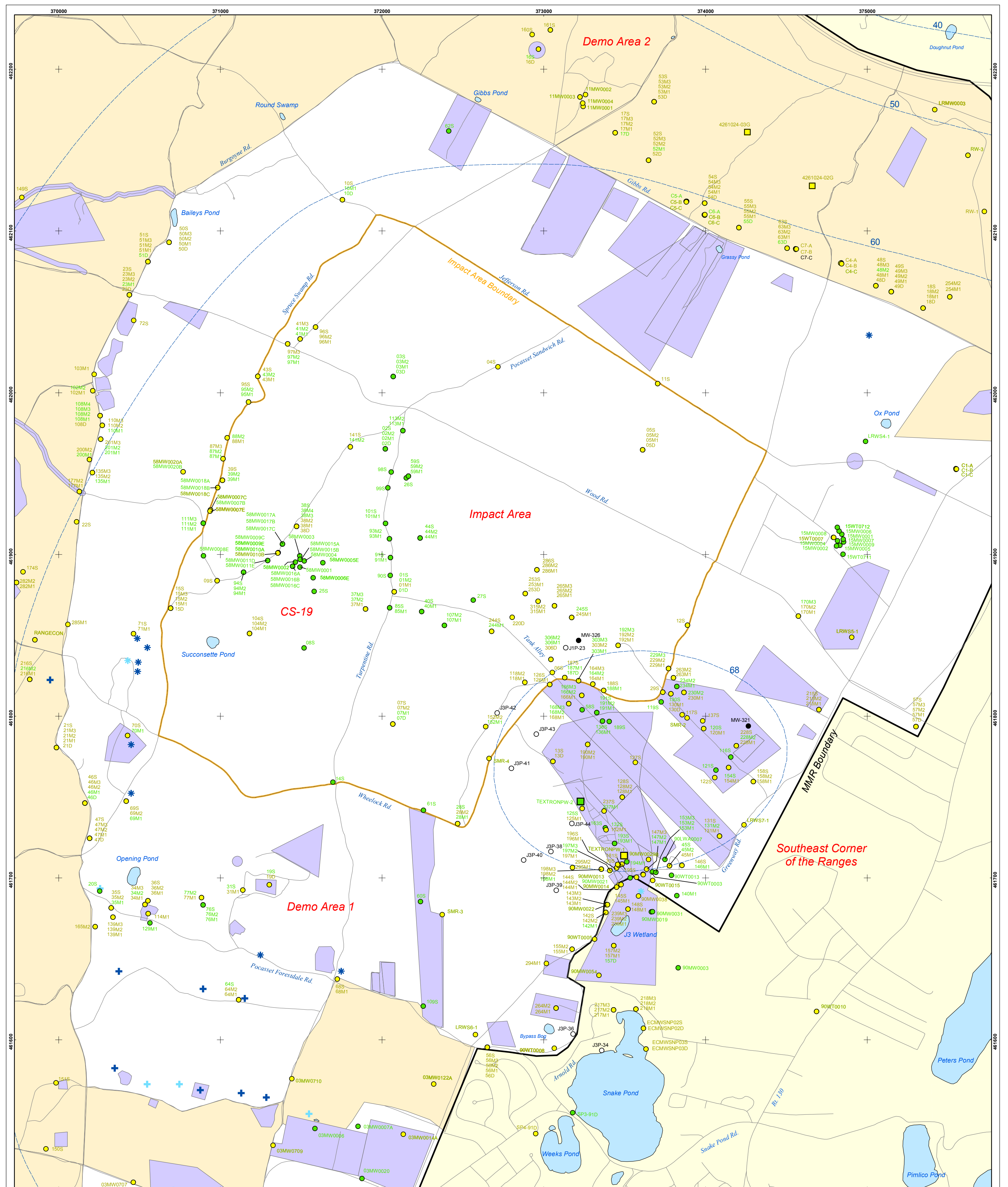


DRAFT

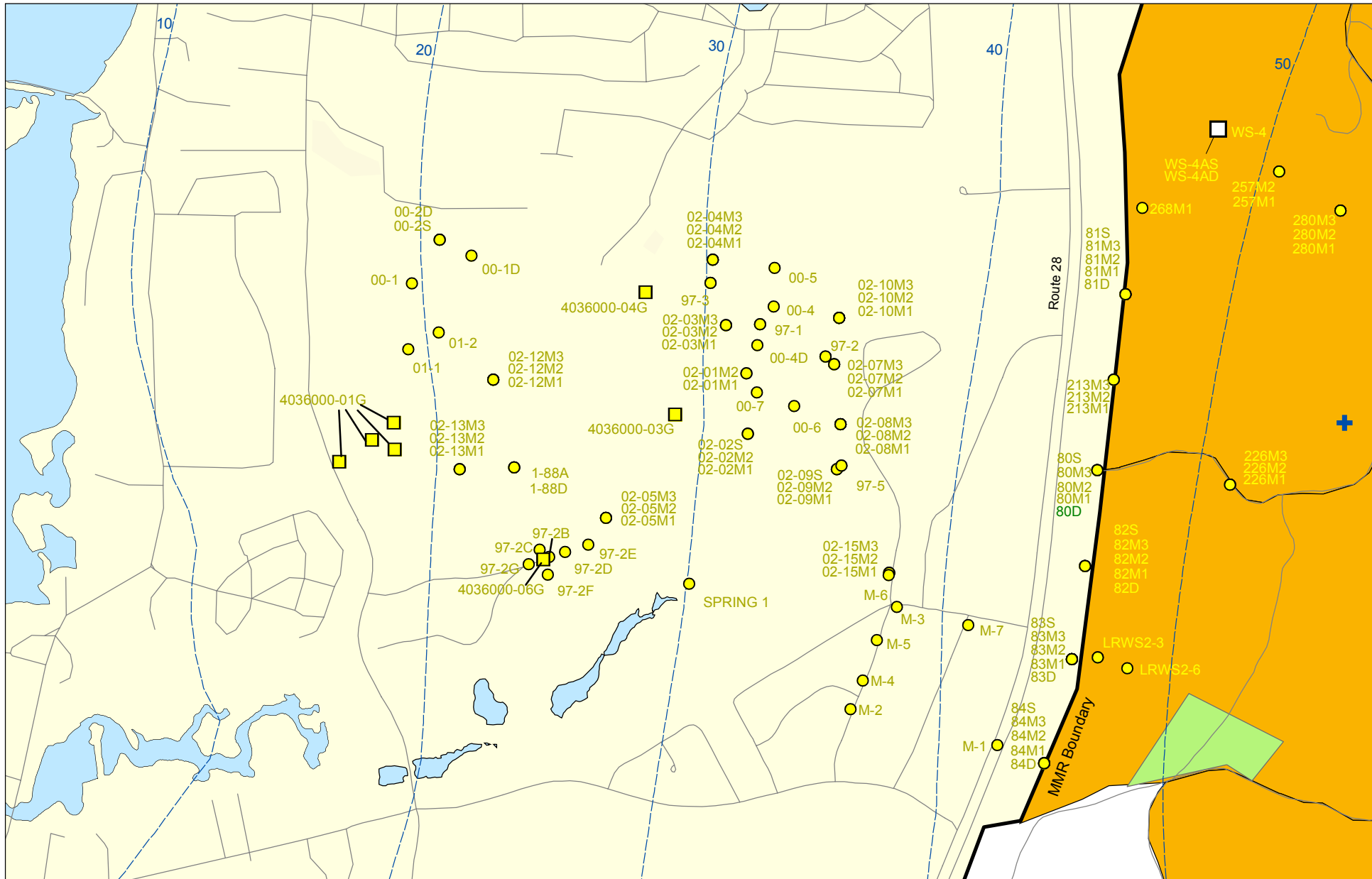
AMEC Earth & Environmental, Inc.
 Westford, Massachusetts

**Chloroform in Groundwater Compared to
 Maximum Contaminant Level/Health Advisories
 Validated Data as of 06/25/04**

**FIGURE
 4**



● Validated Detection Greater than or Equal to Maximum Contaminant Level/Health Advisories	● No Data Available	⊕ Current Gun Position	■ Validated Non-Detect Water Supply Well
● Validated Detection Less than Maximum Contaminant Level/Health Advisories	○ Proposed Monitoring Well	⊕ Current Mortar Position	■ Validated Detection Less than Maximum Contaminant Level/Health Advisories, Water Supply Well
● Validated Non-Detect	■ Military Training Areas	⊕ Old Gun Position	--- Water Table Contour (Feet NGVD)
	■ Military Ranges	⊕ Old Mortar Position	AMEC, September 2003



Sources & Notes:
 Base map data from US Geological Survey
 7 1/2 minute Topographic maps
 Source: Office of Geographic and
 Environmental Information (MassGIS)
 Commonwealth of Massachusetts
 Executive Office of Environmental Affairs

- Validated Detection Less than Maximum Contaminant Level/Health Advisories
- Validated Non-Detect
- + Current Gun Position
- Validated Non-Detect Water Supply Well
- Proposed Water Supply Well
- Combat Training Areas
- Military Training Areas
- Water Table Contour (Feet NGVD)
AMEC, September 2003

Chloroform in Groundwater Compared to Maximum Contaminant Level/Health Advisories Validated Data as of 06/25/04

