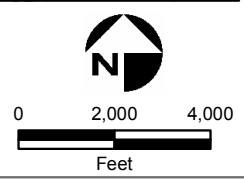


- Validated Detection Greater than or Equal to Maximum Contaminant Level/Health Advisories
- Validated Detection Less than Maximum Contaminant Level/Health Advisories
- Validated Non-Detect
- No Data Available
- Proposed Monitoring Well

- ⊕ Current Gun Position
- ⊛ Current Mortar Position
- ⊕ Old Gun Position
- ⊛ Old Mortar Position
- Combat Training Areas
- Military Training Areas
- Military Ranges

- Validated Non-Detect Water Supply Well
- Proposed Water Supply Well
- Water Table Contour (Feet NGVD) AMEC, September 2003



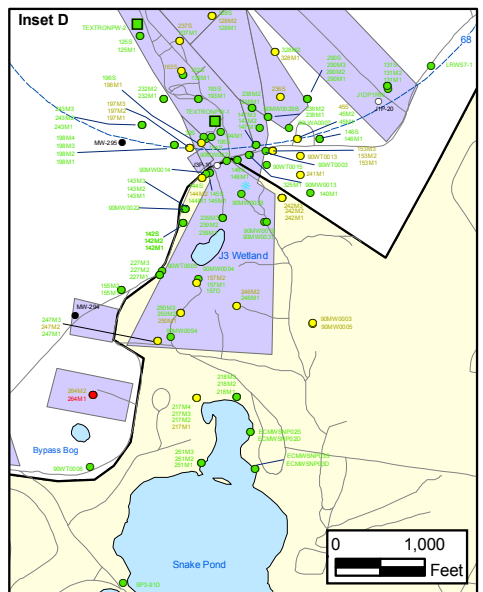
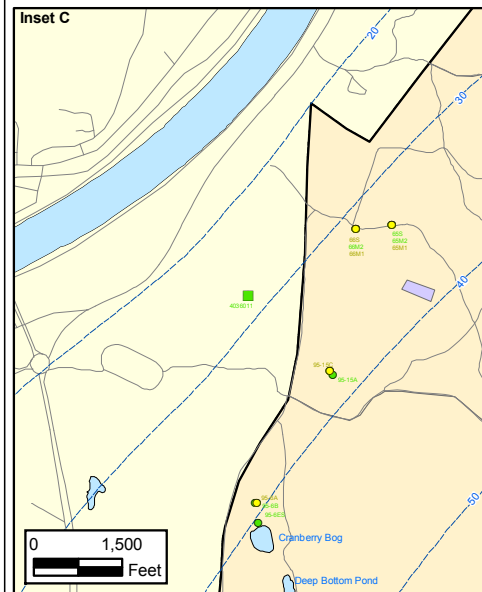
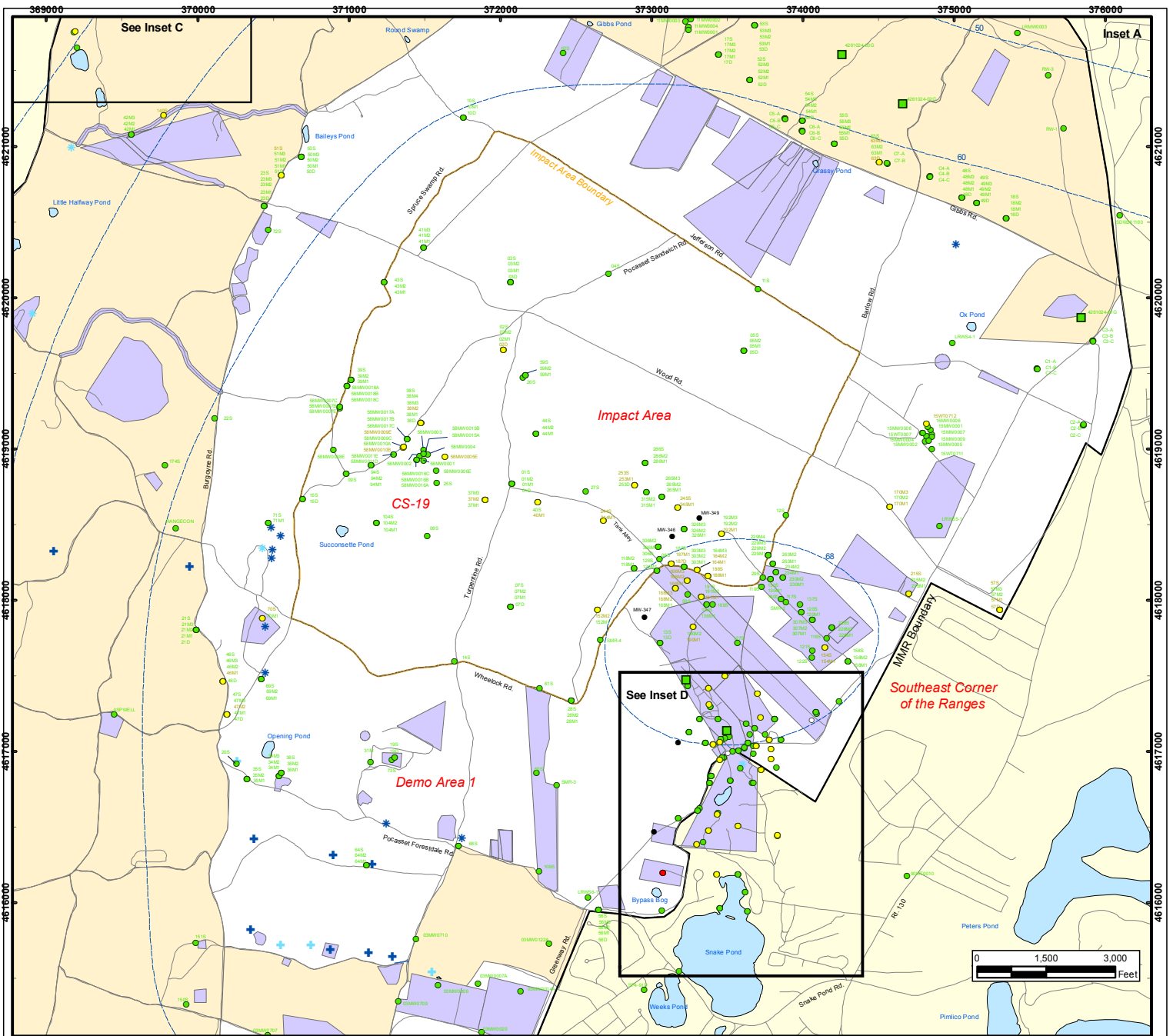
Sources & Notes
 Base map data from US Geological Survey
 7 1/2 minute Topographic Maps.
 Source: Office of Geographic and
 Environmental Information (MassGIS)
 Commonwealth of Massachusetts
 Executive Office of Environmental Affairs

DRAFT
 AMEC Earth & Environmental, Inc.
 Westford, Massachusetts

**Semi-Volatile Organic Compounds (Excluding BEHP) in Groundwater
 Compared to Maximum Contaminant Level/Health Advisories
 Validated Data as of 12/23/04**

FIGURE
5

J:\GIS\Jan2005\monthly\SVOC_overall.pdf
 G:\MMR_COE\Work2005\Monthly\Jan2005\SVOC\SVOC_overall.mxd
 January 3, 2005 DNB JBB JPB ABF



Semi-Volatile Organic Compounds (Excluding BEHP) in Groundwater Compared to Maximum Contaminant Level/Health Advisories Validated Data as of 12/23/04

- Validated Detection Greater than or Equal to Maximum Contaminant Level/Health Advisories
- Validated Detection Less than Maximum Contaminant Level/Health Advisories
- Validated Non-Detect
- No Data Available
- Proposed Monitoring Well
- Military Training Areas
- Military Ranges
- ⊕ Current Gun Position
- ⊕ Current Mortar Position
- ⊕ Old Gun Position
- ⊕ Old Mortar Position
- Validated Non-Detect Water Supply Well
- - - Water Table Contour (Feet NGVD), AMEC, September 2003

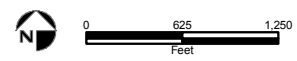
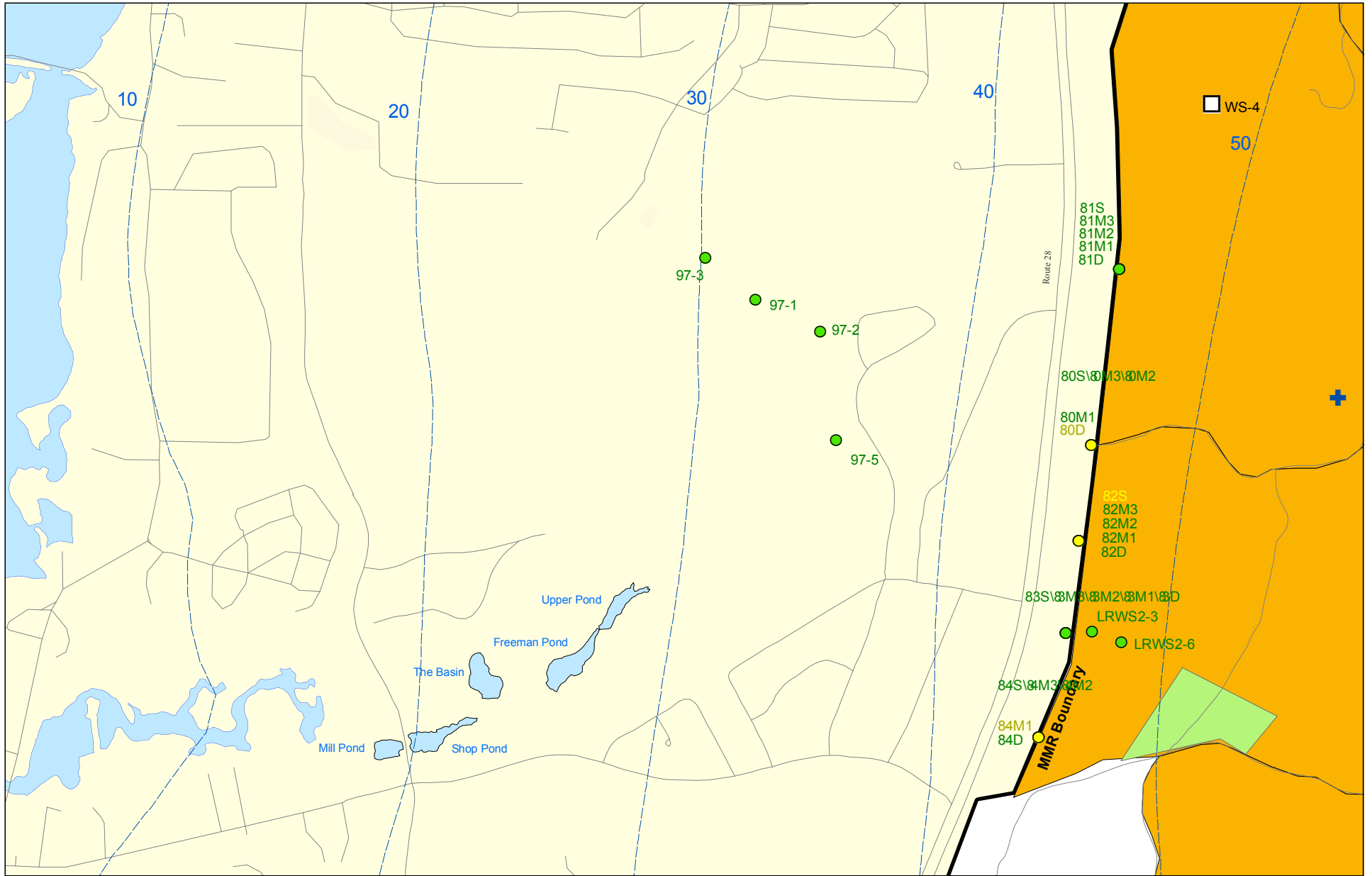
Impact Area Groundwater Study Program

DRAFT

AMEC Earth & Environmental, Inc.
Westford, Massachusetts

Source & Notes:
Base map data from US Geological Survey 7 1/2 minute Topographic Maps.
Source: Office of Geographic and Environmental Information (MAG&E), Commonwealth of Massachusetts, Executive Office of Environmental Affairs.

FIGURE 5
Inset Map



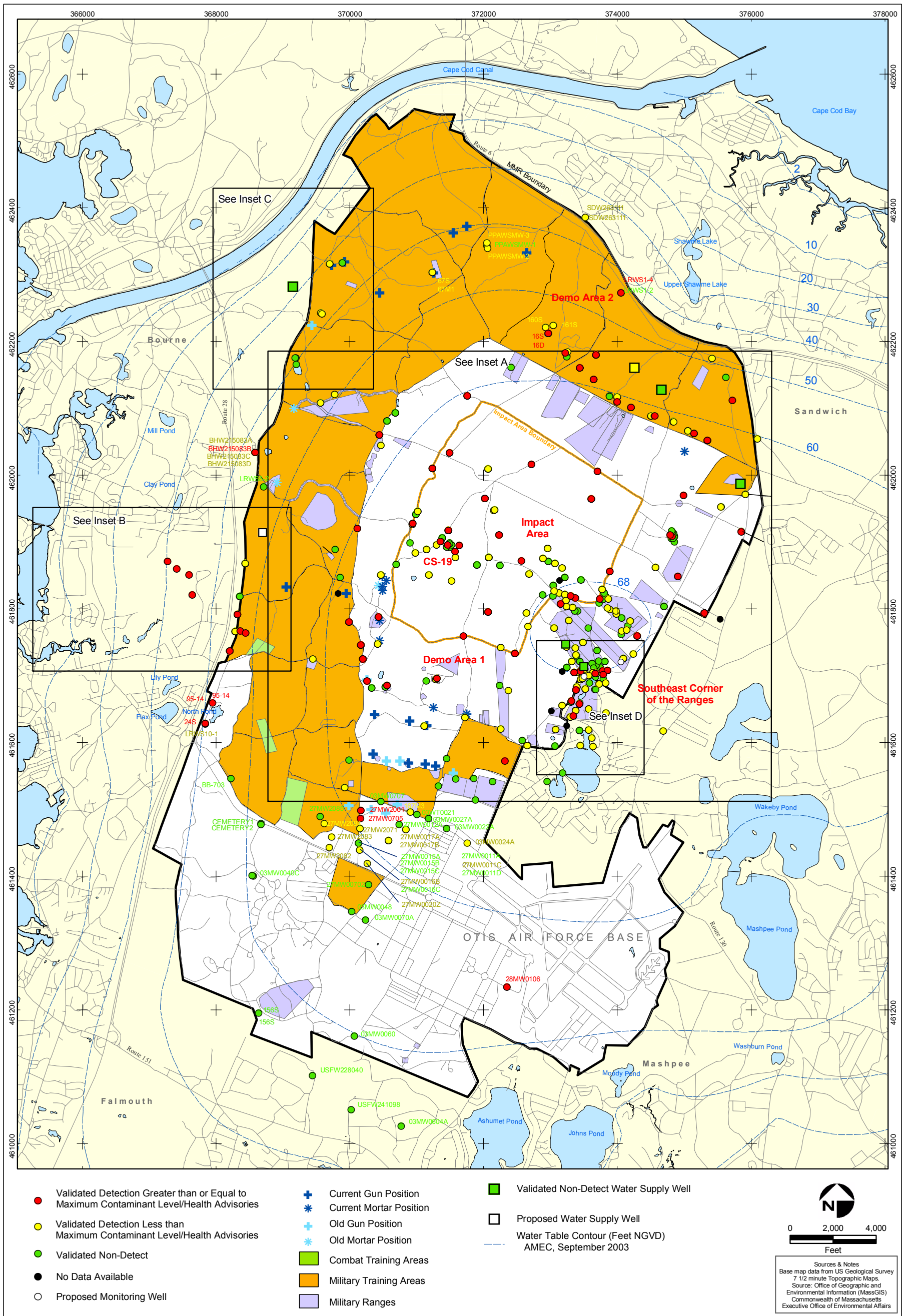
Sources & Notes:
 Base map data from US Geological Survey
 7 1/2 minute Topographic maps.
 Source: MassGIS

- Validated Detection Less than Maximum Contaminant Level/Health Advisories
- Validated Non-Detect
- Proposed Water Supply Well
- + Current Gun Position

- Combat Training Areas
- Military Training Areas

--- Water Table Contour (Feet NGVD), AMEC, September 2003

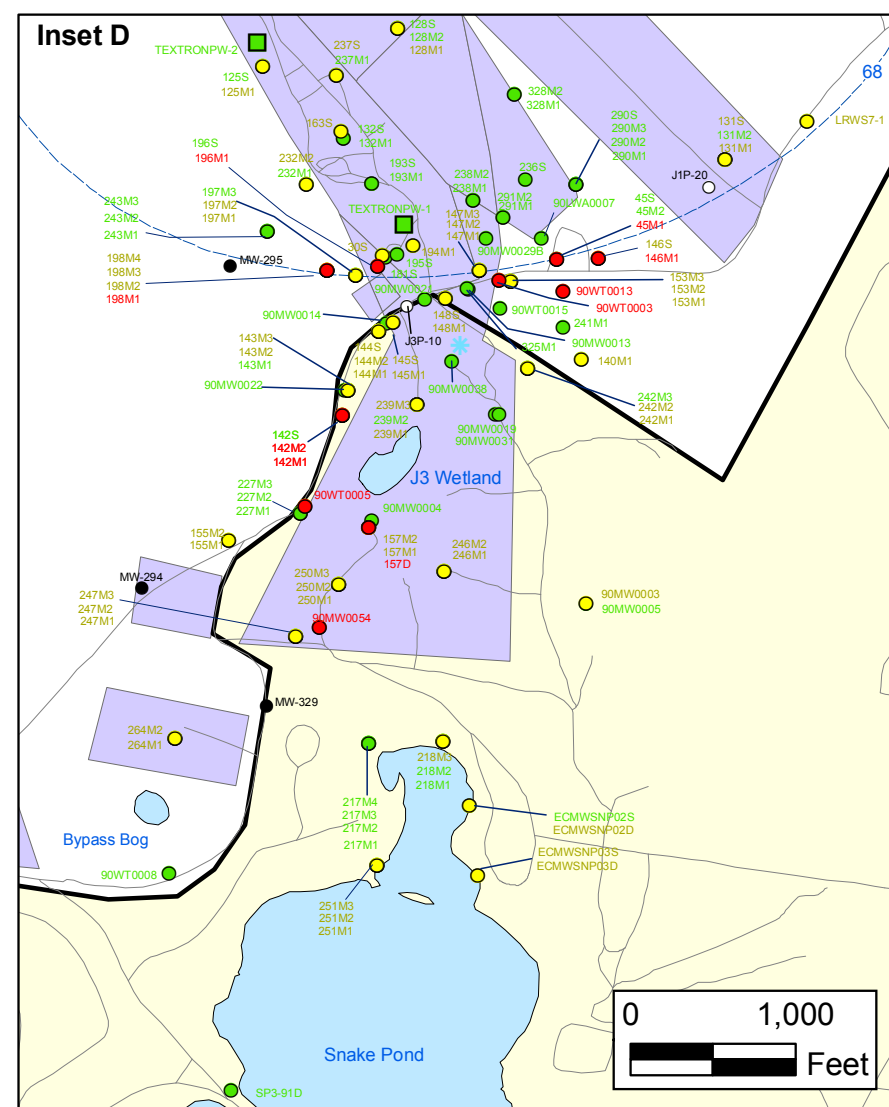
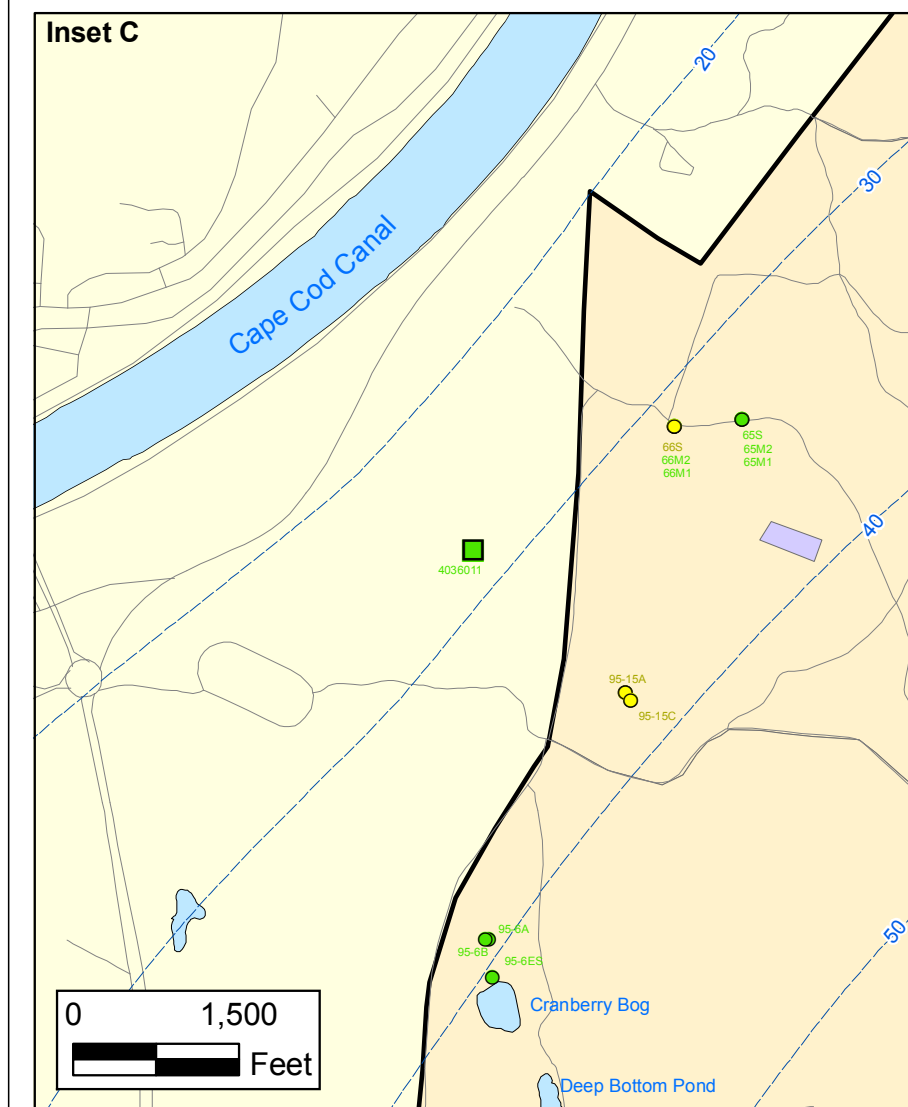
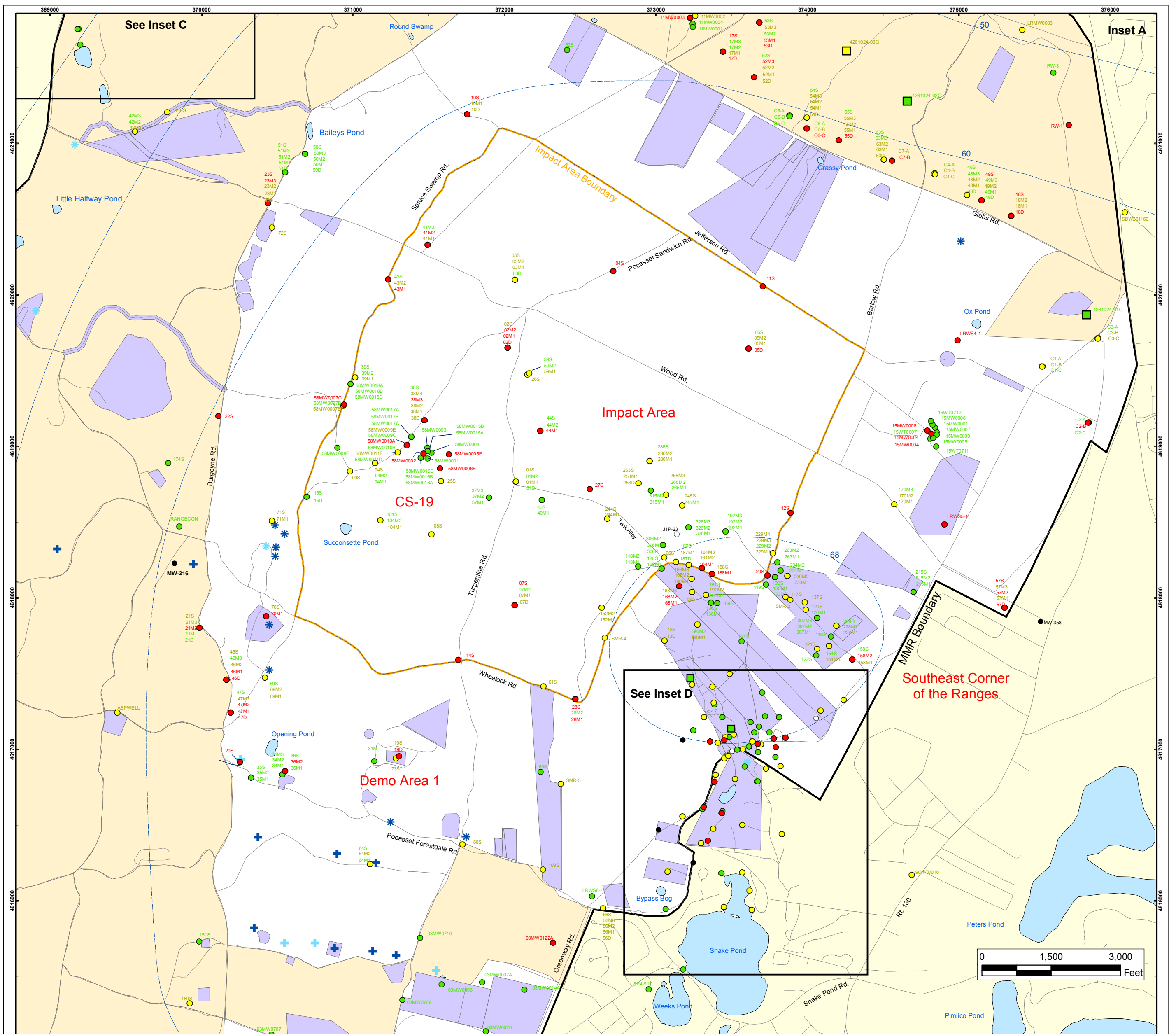
Semi-Volatile Organic Compounds (Excluding BEHP) in Groundwater Compared to Maximum Contaminant Level/Health Advisories
 Validated Data as of 12/23/04



DRAFT
 AMEC Earth & Environmental, Inc.
 Westford, Massachusetts

**BEHP in Groundwater
 Compared to a 4 ppb Concentration
 Validated Data as of 12/23/04**

**FIGURE
 6**



BEHP in Groundwater Compared to Maximum Contaminant Level/Health Advisories Validated Data as of 12/23/04

- Validated Detection Greater than or Equal to Maximum Contaminant Level/Health Advisories
- Validated Detection Less than Maximum Contaminant Level/Health Advisories
- Validated Non-Detect
- No Data Available
- Proposed Monitoring Well
- Military Training Areas
- Military Ranges
- + Current Gun Position
- + Current Mortar Position
- + Old Gun Position
- + Old Mortar Position
- Validated Non-Detect Water Supply Well
- Water Table Contour (Feet NGVD), AMEC, September 2003

Impact Area Groundwater Study Program

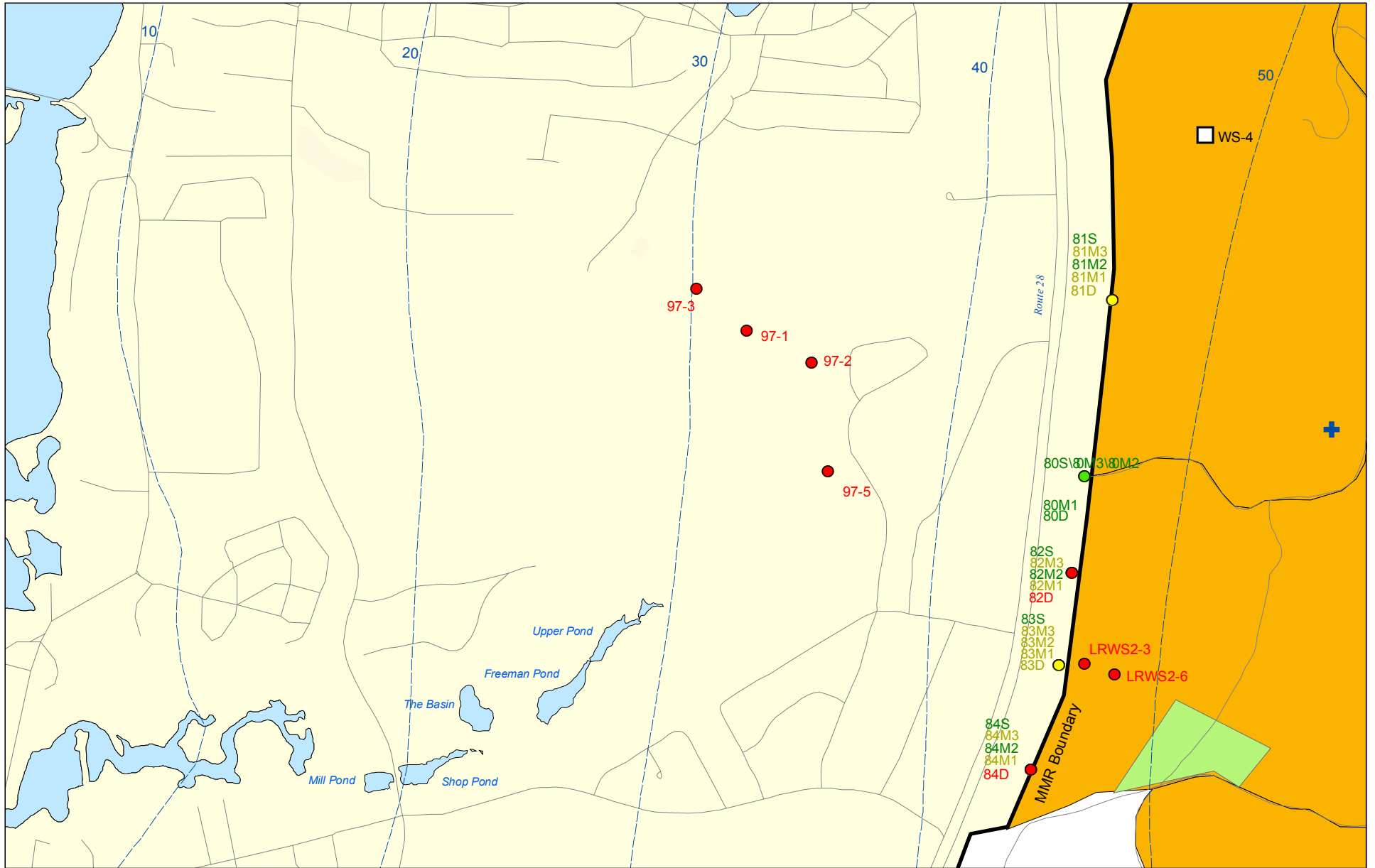
DRAFT

AMEC Earth & Environmental, Inc.
Westford, Massachusetts

Sources & Notes
Base map data from US Geological Survey
7 1/2 minute Topographic Maps
Source: Office of Geographic and Environmental Information (MassGIS)
Commonwealth of Massachusetts
Executive Office of Environmental Affairs

FIGURE
6

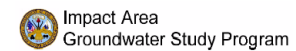
Inset Map



Sources & Notes:
 Base map data from US Geological Survey
 7 1/2 minute Topographic maps.
 Source: Office of Geographic and
 Environmental Information (MassGIS)
 Commonwealth of Massachusetts
 Executive Office of Environmental Affairs

- Validated Detection Greater than or Equal to Maximum Contaminant Level/Health Advisories
- Validated Detection Less than Maximum Contaminant Level/Health Advisories
- Validated Non-Detect
- +
- Current Gun Position
- Proposed Water Supply Well
- Combat Training Areas
- Military Training Areas
- Water Table Contour (Feet NGVD)
 AMEC, September 2003

**BEHP in Groundwater Compared to
 Maximum Contaminant Level/Health Advisories
 Validated Data as of 12/23/04**



AMEC Earth & Environmental, Inc.
 Westford, Massachusetts **DRAFT**

**FIGURE
 Inset Map B 6**