

**DRAFT**

**Volatile Organic Compounds (Excluding Chloroform) in Groundwater  
 Compared to Maximum Contaminant Level/Health Advisories  
 Validated Data as of 12/23/04**

AMEC Earth & Environmental, Inc.  
 Westford, Massachusetts

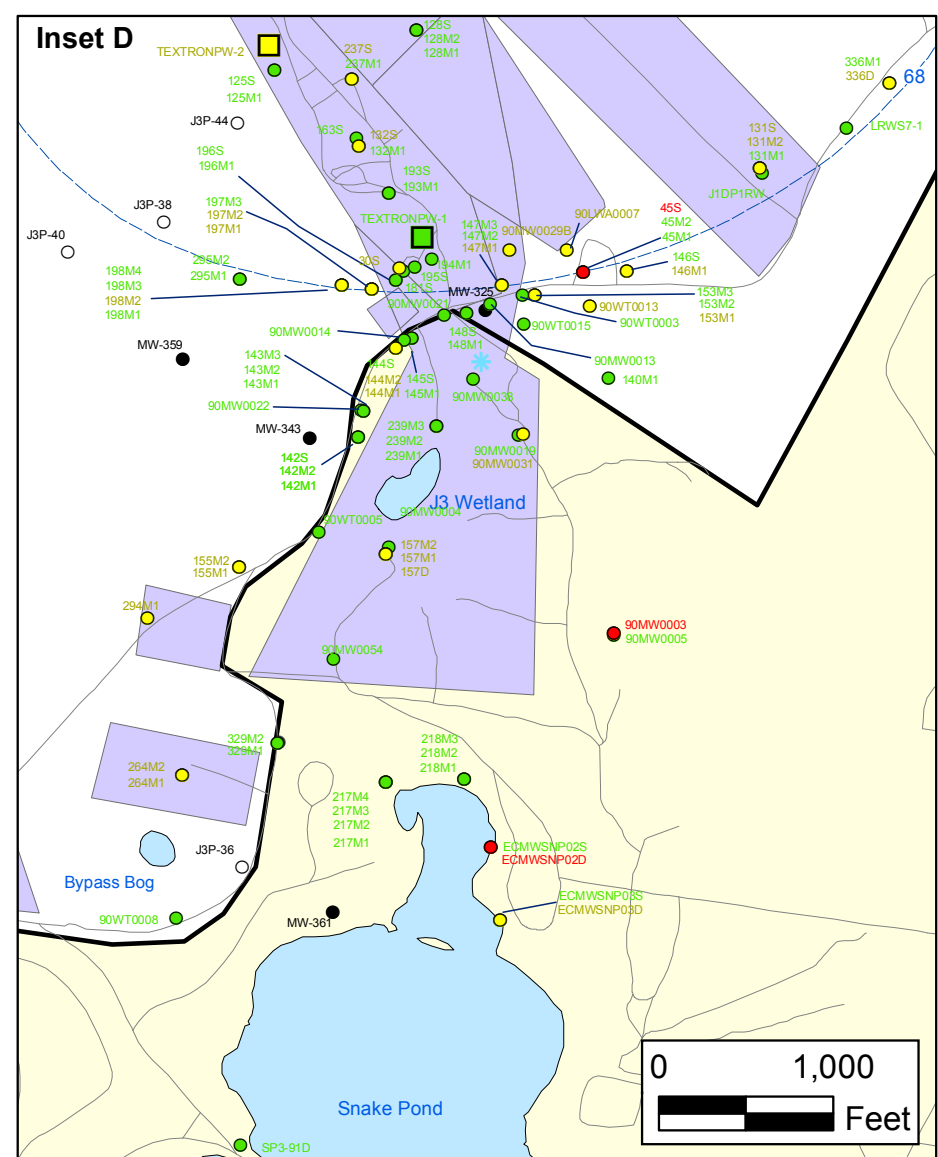
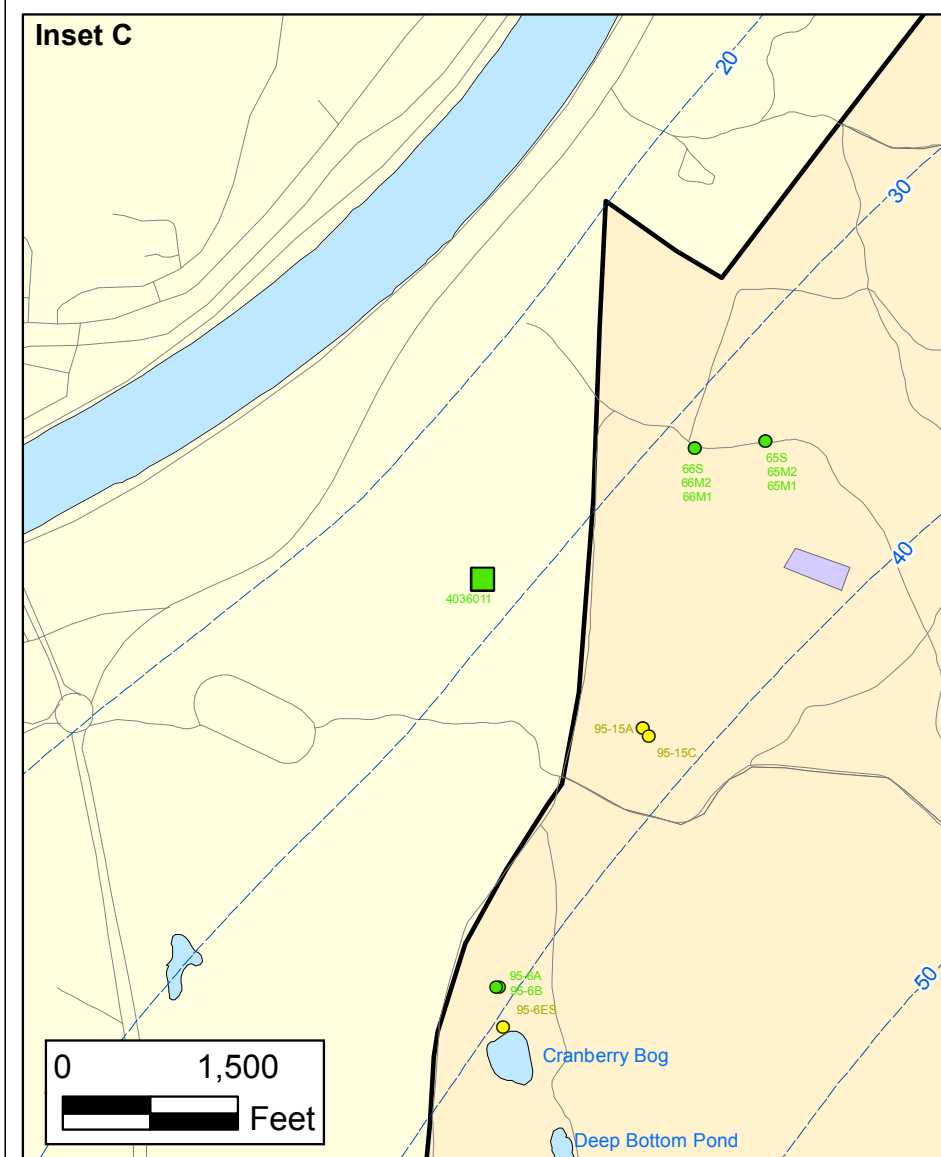
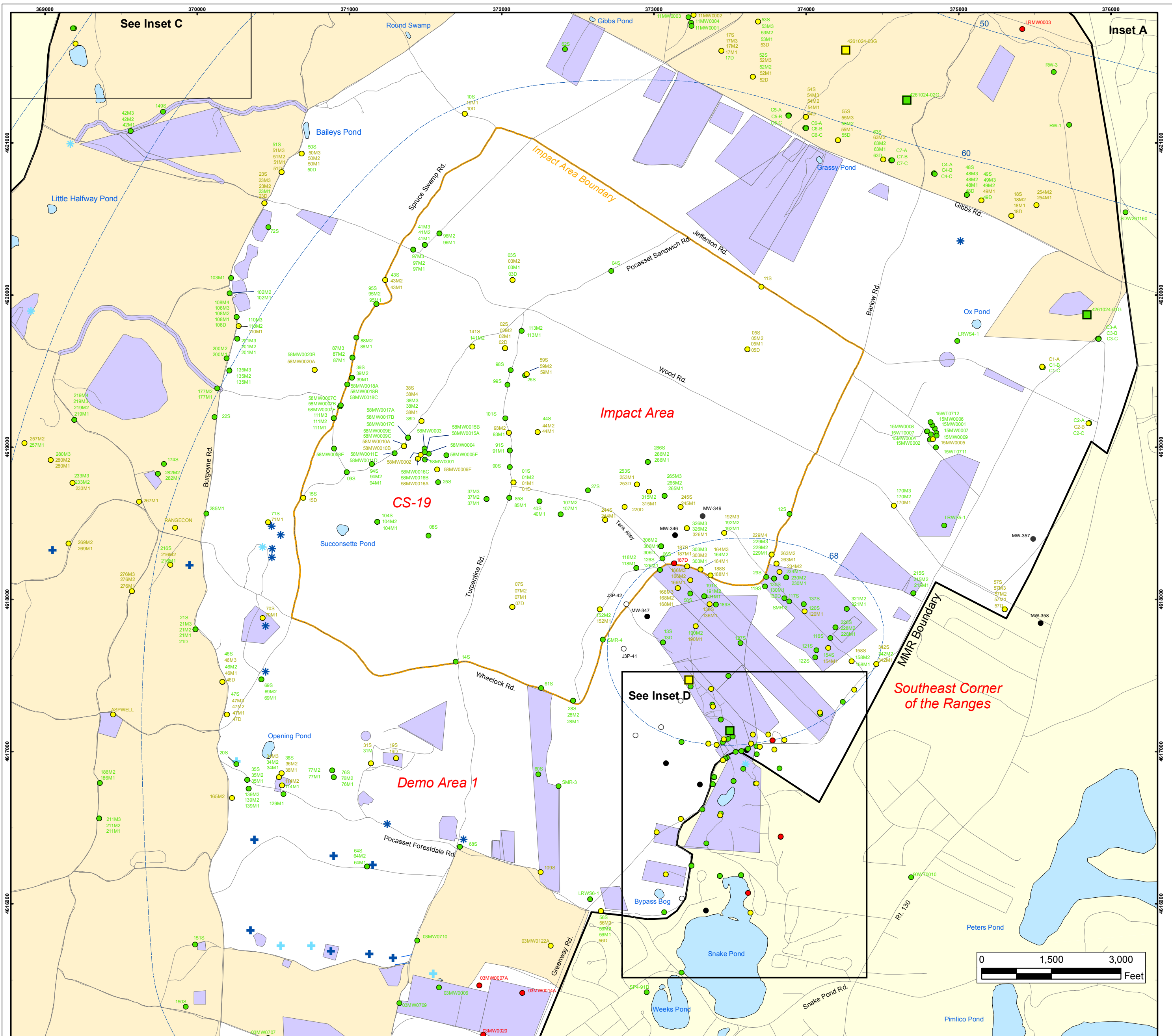
FIGURE  
**3**

J:\GIS\Jan2005\monthly\VOC\_overall.pdf  
 G:\MMR\_COE\Work2005\Monthly\Jan20053\_VOC\VOC\_overall.mxd  
 December 29, 2004 DNB ABF



**Impact Area  
 Groundwater Study Program**





### Volatile Organic Compounds (Excluding Chloroform) in Groundwater Compared to Maximum Contaminant Level/Health Advisories Validated Data as of 12/23/04

- Validated Detection Greater than or Equal to Maximum Contaminant Level/Health Advisories
- Validated Detection Less than Maximum Contaminant Level/Health Advisories
- Validated Non-Detect
- No Data Available
- Proposed Monitoring Well
- Military Training Areas
- Military Ranges
- + Current Gun Position
- \* Current Mortar Position
- + Old Gun Position
- \* Old Mortar Position
- Validated Non-Detect Water Supply Well
- Validated Detection Less than Maximum Contaminant Level/Health Advisories Water Supply Well
- Water Table Contour (Feet NGVD), AMEC, September 2003

**Impact Area  
Groundwater Study Program**

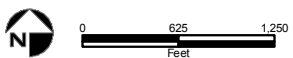
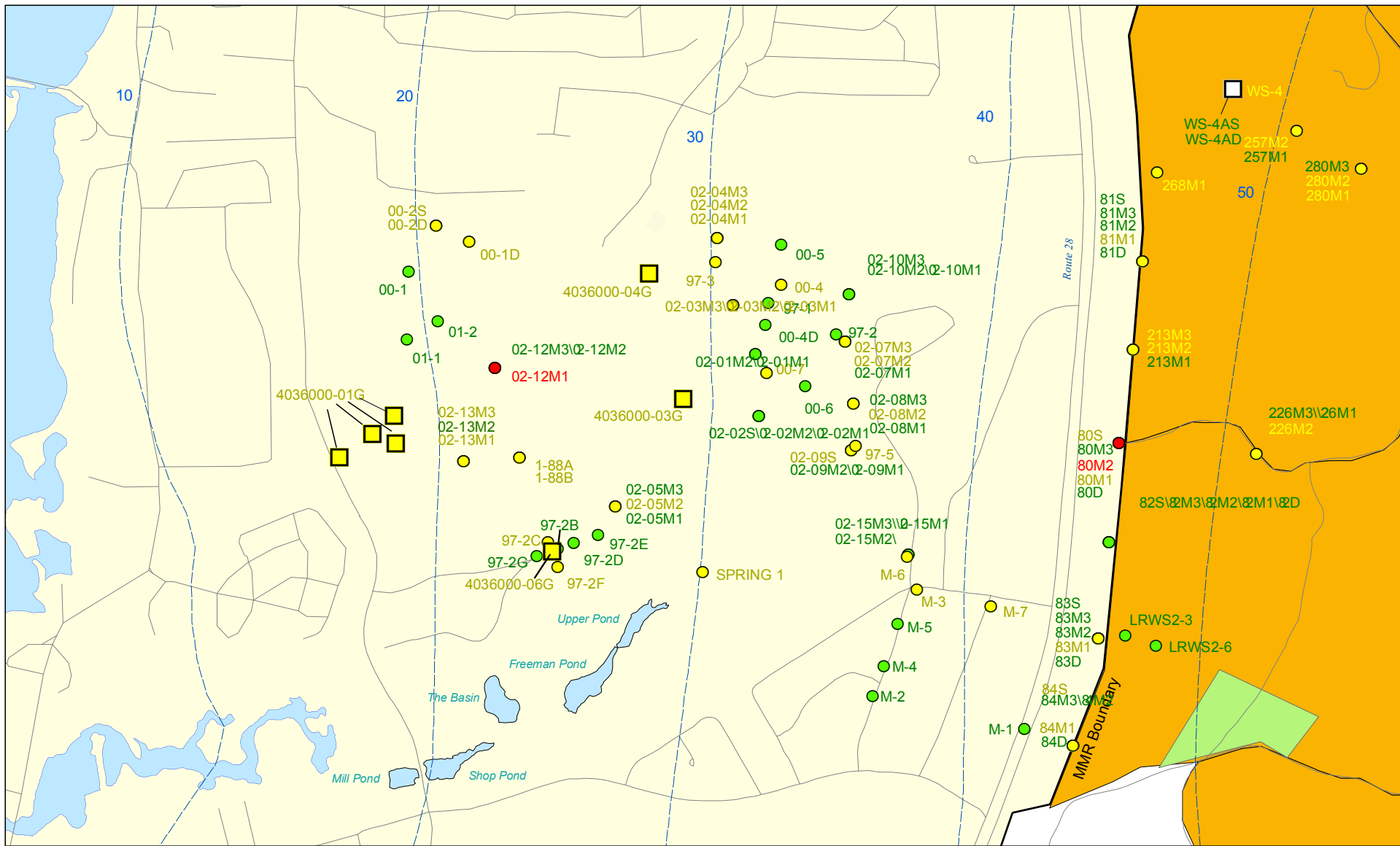
**DRAFT**

AMEC Earth & Environmental, Inc.  
Westford, Massachusetts

**FIGURE  
3**

**Inset Map**

Sources & Notes  
Base map data from US Geological Survey  
7 1/2 minute Topographic Maps  
Source: Office of Geographic and  
Environmental Information (MassGIS)  
Commonwealth of Massachusetts  
Executive Office of Environmental Affairs

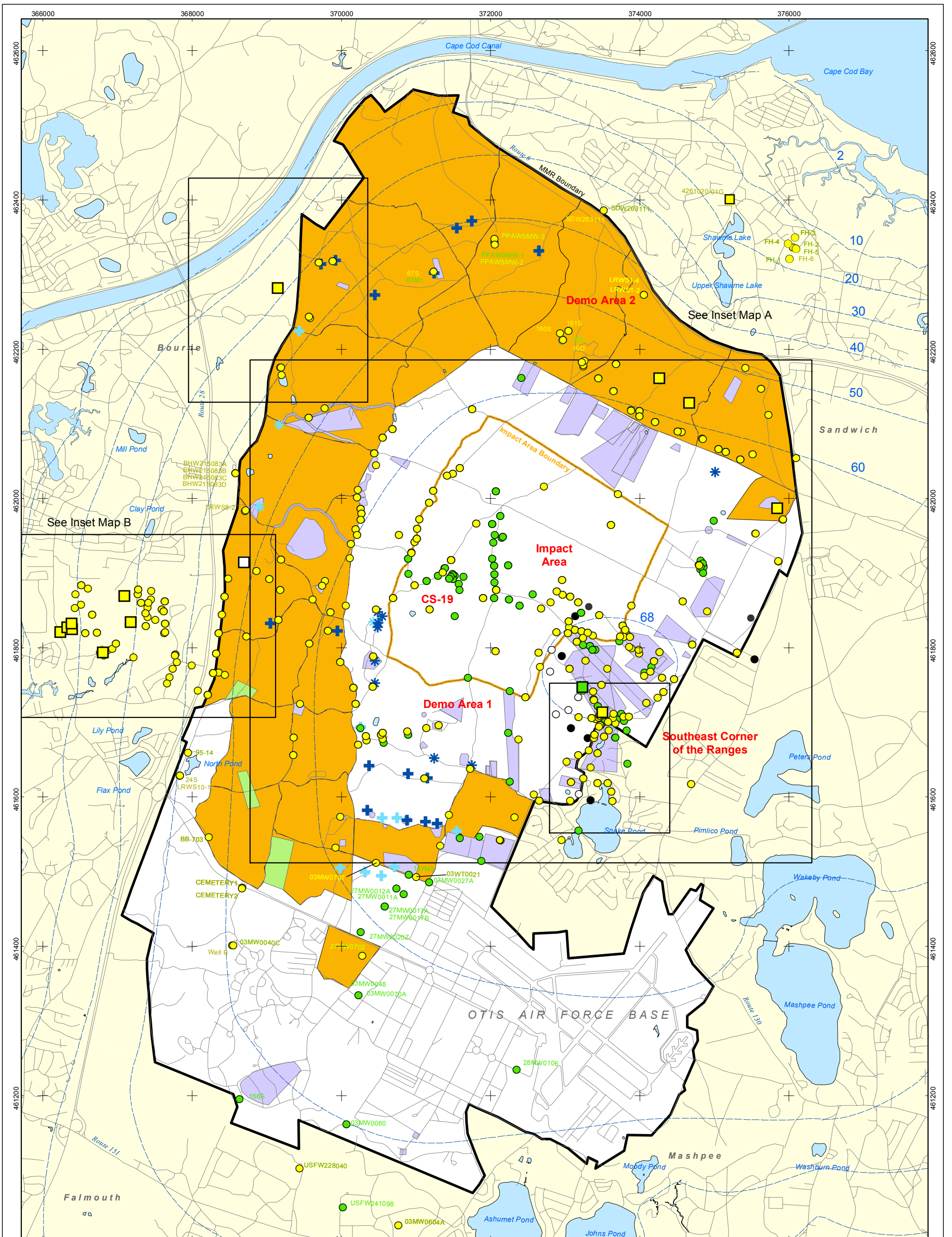


Sources & Notes:  
 Base map data from US Geological Survey  
 7 1/2 minute Topographic maps.  
 Source: MassGIS

- Validated Detection Greater than or Equal to Maximum Contaminant Level/Health Advisories
- Validated Detection Less than Maximum Contaminant Level/Health Advisories
- Validated Non-Detect
- Validated Detection Less than Maximum Contaminant Level/Health Advisories Water Supply Well
- Proposed Water Supply Well
- Combat Training Areas
- Military Training Areas
- Water Table Contour (Feet NGVD), AMEC, September 2003

**Volatile Organic Compounds (Excluding Chloroform) in Groundwater Compared to Maximum Contaminant Level/Health Advisories**  
 Validated Data as of 12/23/04





- Validated Detection Greater than or Equal to Maximum Contaminant Level/Health Advisories
- Validated Detection Less than Maximum Contaminant Level/Health Advisories
- Validated Non-Detect
- No Data Available
- Proposed Monitoring Well

- ⊕ Current Gun Position
- ⊕ Current Mortar Position
- ⊕ Old Gun Position
- ⊕ Old Mortar Position
- Combat Training Areas
- Military Training Areas
- Military Ranges

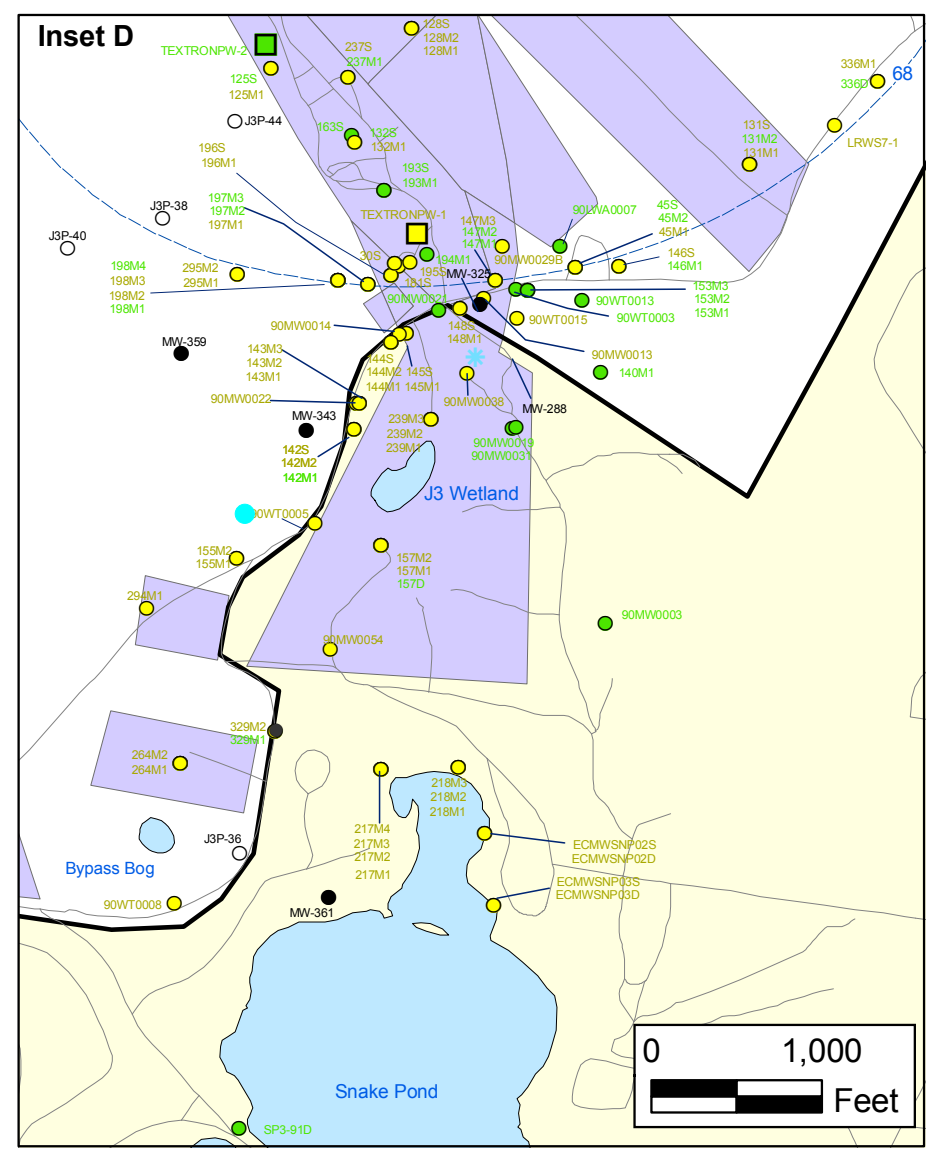
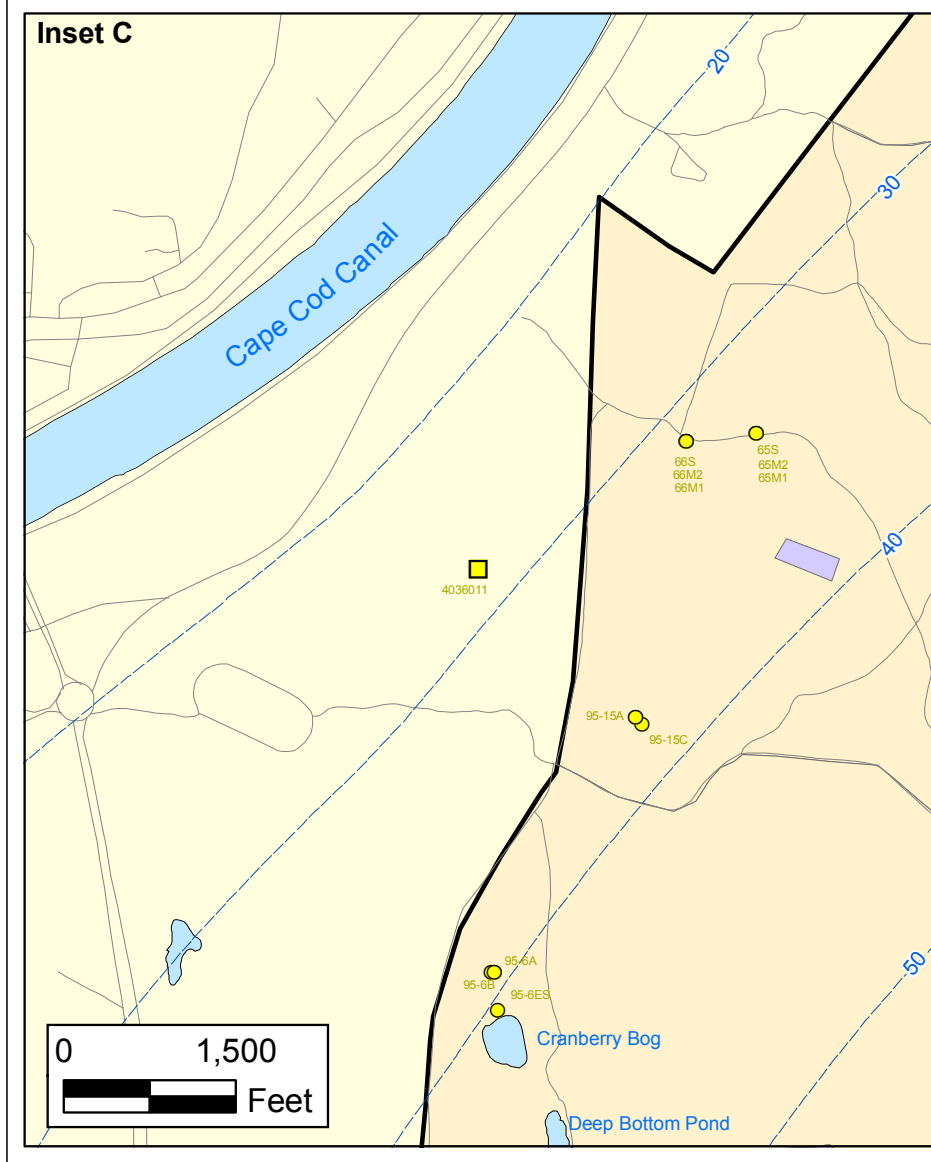
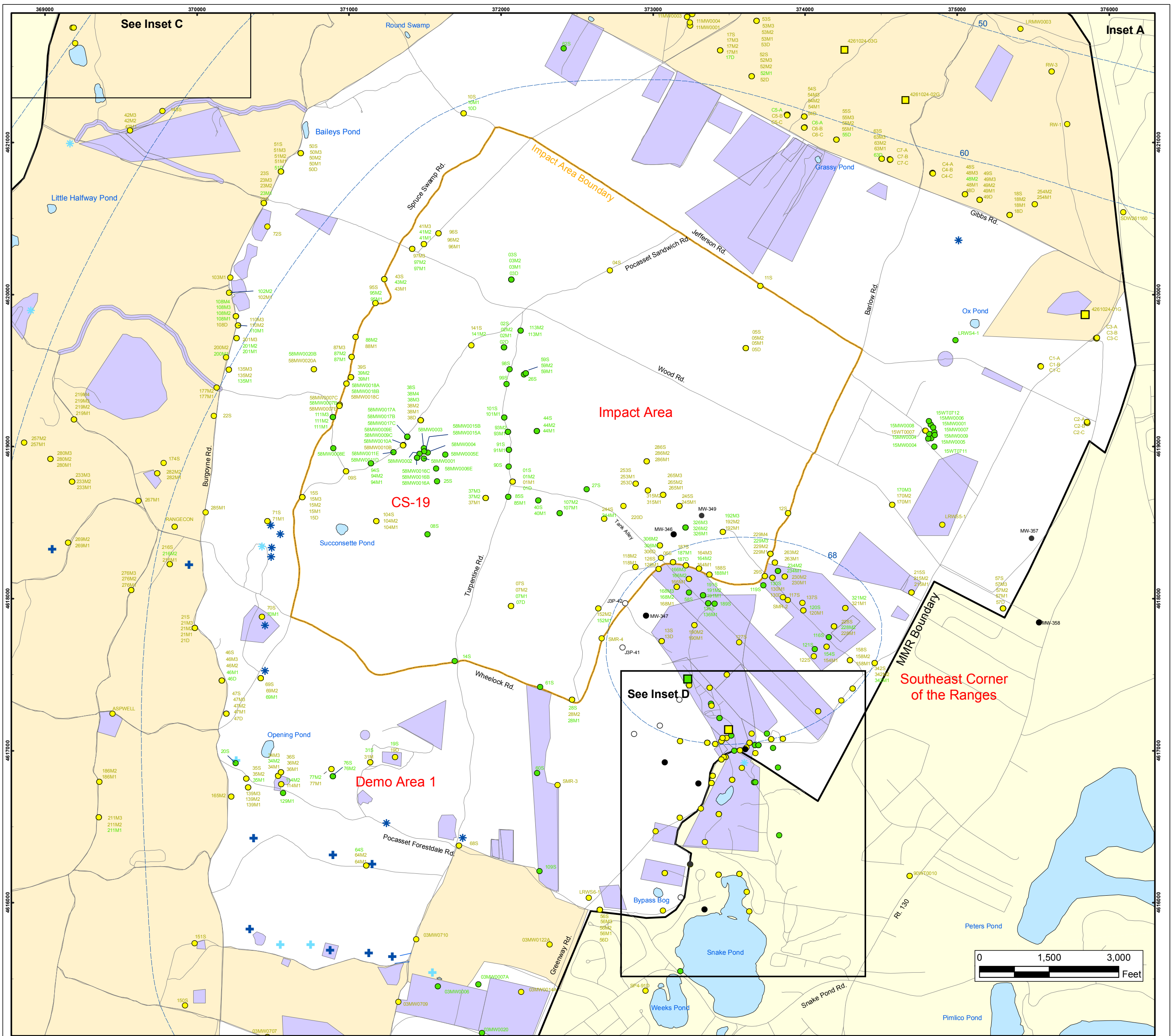
- Validated Non-Detect Water Supply Well
- Validated Detection Less than the Maximum Contaminant Level/Health Advisories
- Proposed Water Supply Well
- Water Table Contour (Feet NGVD)  
AMEC, September 2003

N

0 2,000 4,000  
Feet

Sources & Notes  
Base map data from US Geological Survey  
7 1/2 minute Topographic Maps.  
Source: Office of Geographic and  
Environmental Information (MassGIS)  
Commonwealth of Massachusetts  
Executive Office of Environmental Affairs





### Chloroform in Groundwater Compared to Maximum Contaminant Level/Health Advisories Validated Data as of 12/23/04

- Validated Detection Less than Maximum Contaminant Level/Health Advisories
- Validated Non-Detect
- No Data Available
- Proposed Monitoring Well
- Military Training Areas
- Military Ranges
- + Current Gun Position
- \* Current Mortar Position
- + Old Gun Position
- \* Old Mortar Position
- Validated Non-Detect Water Supply Well
- Validated Detection Less than Maximum Contaminant Level/Health Advisories Water Supply Well
- Water Table Contour (Feet NGVD), AMEC, September 2003

**Impact Area  
Groundwater Study Program**

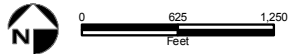
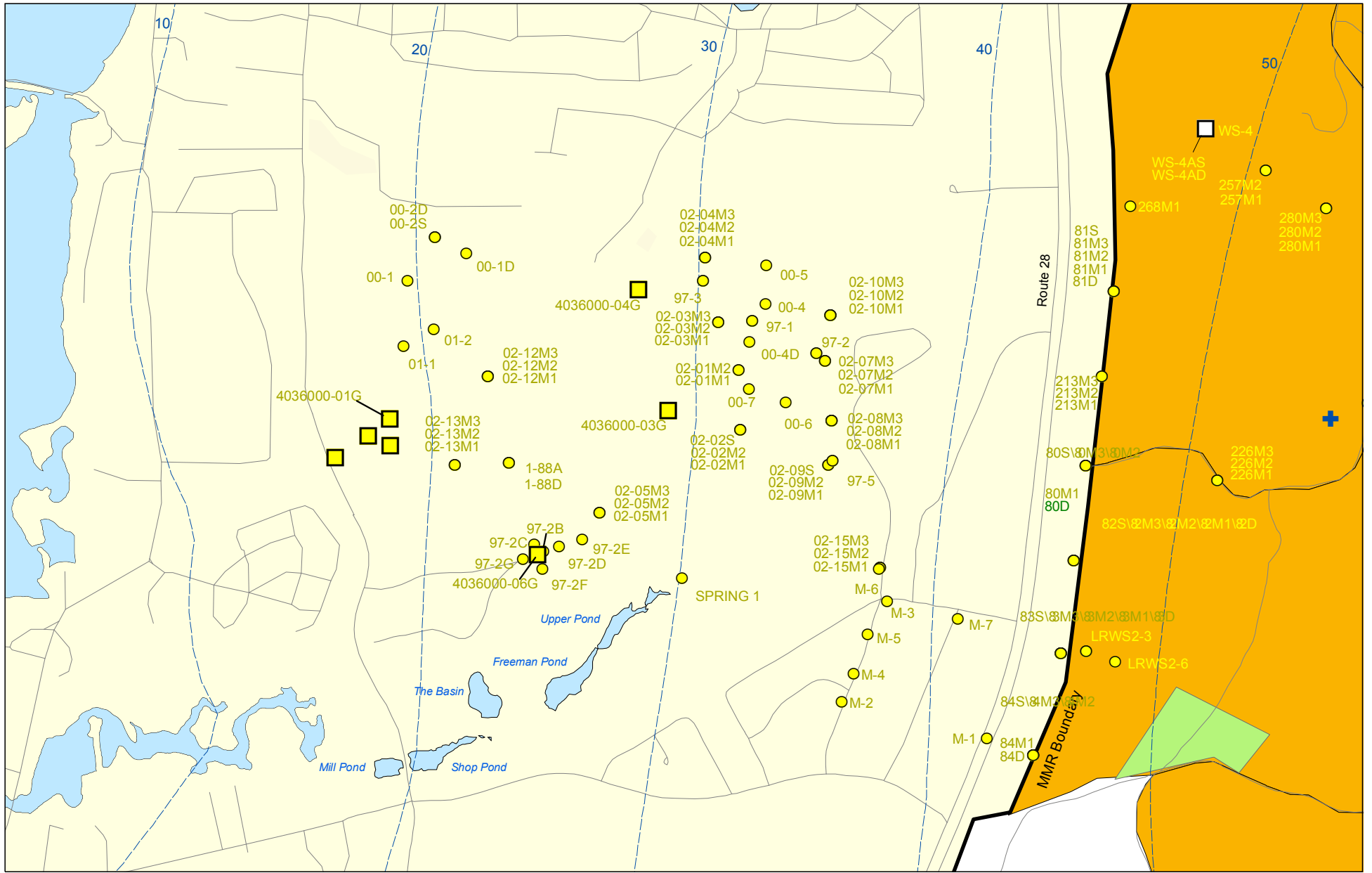
**DRAFT**

AMEC Earth & Environmental, Inc.  
Westford, Massachusetts

Sources & Notes  
Base map data from US Geological Survey  
7 1/2 minute Topographic Maps.  
Source: Office of Geographic and  
Environmental Information (MassGIS)  
Commonwealth of Massachusetts  
Executive Office of Environmental Affairs

FIGURE  
**4**

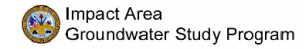
**Inset Map**



Sources & Notes:  
 Base map data from US Geological Survey  
 7 1/2 minute Topographic maps  
 Source: Office of Geographic and  
 Environmental Information (MassGIS)  
 Commonwealth of Massachusetts  
 Executive Office of Environmental Affairs

- Validated Detection Less than Maximum Contaminant Level/Health Advisories
- Validated Non-Detect
- + Current Gun Position
- Validated Detection Less than Maximum Contaminant Level/Health Advisories
- Proposed Water Supply Well
- Combat Training Areas
- Military Training Areas
- Water Table Contour (Feet NGVD)  
AMEC, September 2003

**Chloroform in Groundwater Compared to Maximum Contaminant Level/Health Advisories Validated Data as of 12/23/04**



AMEC Earth & Environmental, Inc.  
 Westford, Massachusetts **DRAFT**

**Inset Map B** **FIGURE 4**