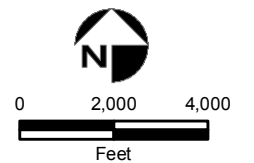


- Validated Detection Greater than or Equal to Maximum Contaminant Level/Health Advisories
- Validated Detection Less than Maximum Contaminant Level/Health Advisories
- Validated Non-Detect
- No Data Available
- Proposed Monitoring Well

- ⊕ Current Gun Position
- ⊛ Current Mortar Position
- ⊕ Old Gun Position
- ⊛ Old Mortar Position
- Combat Training Areas
- Military Training Areas
- Military Ranges

- Validated Non-Detect Water Supply Well
- Validated Detection Less than Maximum Contaminant Level/Health Advisories Water Supply Well
- Proposed Water Supply Well
- Water Table Contour (Feet NGVD) AMEC, September 2003
- - - Area of RDX Detections Greater than 2.0 ppb  
 Central Impact Area 7/15/03 Demo 1 12/21/04  
 SE Ranges (Jacobs Eng.) 10/21/04 NWC 8/17/04



Sources & Notes  
 Base map data from US Geological Survey  
 7 1/2 minute Topographic Maps.  
 Source: Office of Geographic and  
 Environmental Information (MassGIS)  
 Commonwealth of Massachusetts  
 Executive Office of Environmental Affairs

**DRAFT**

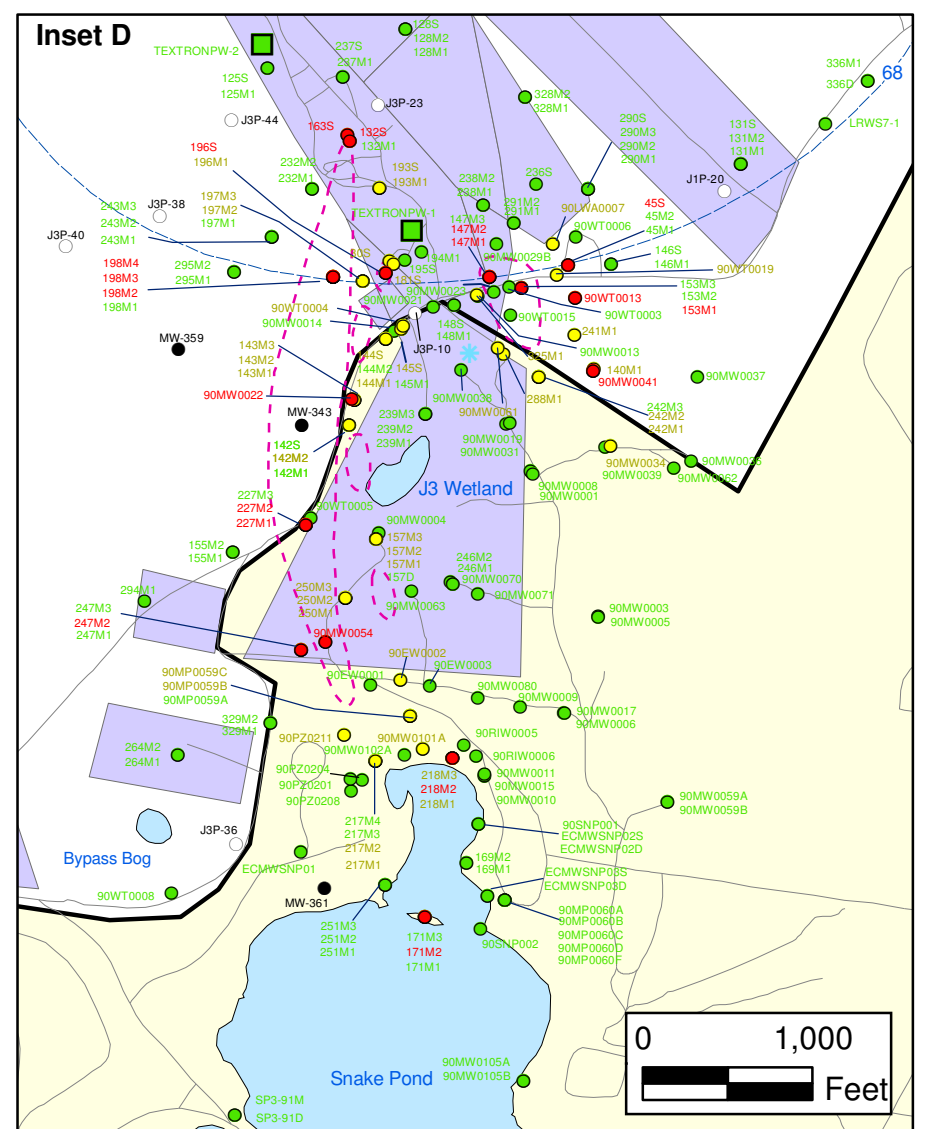
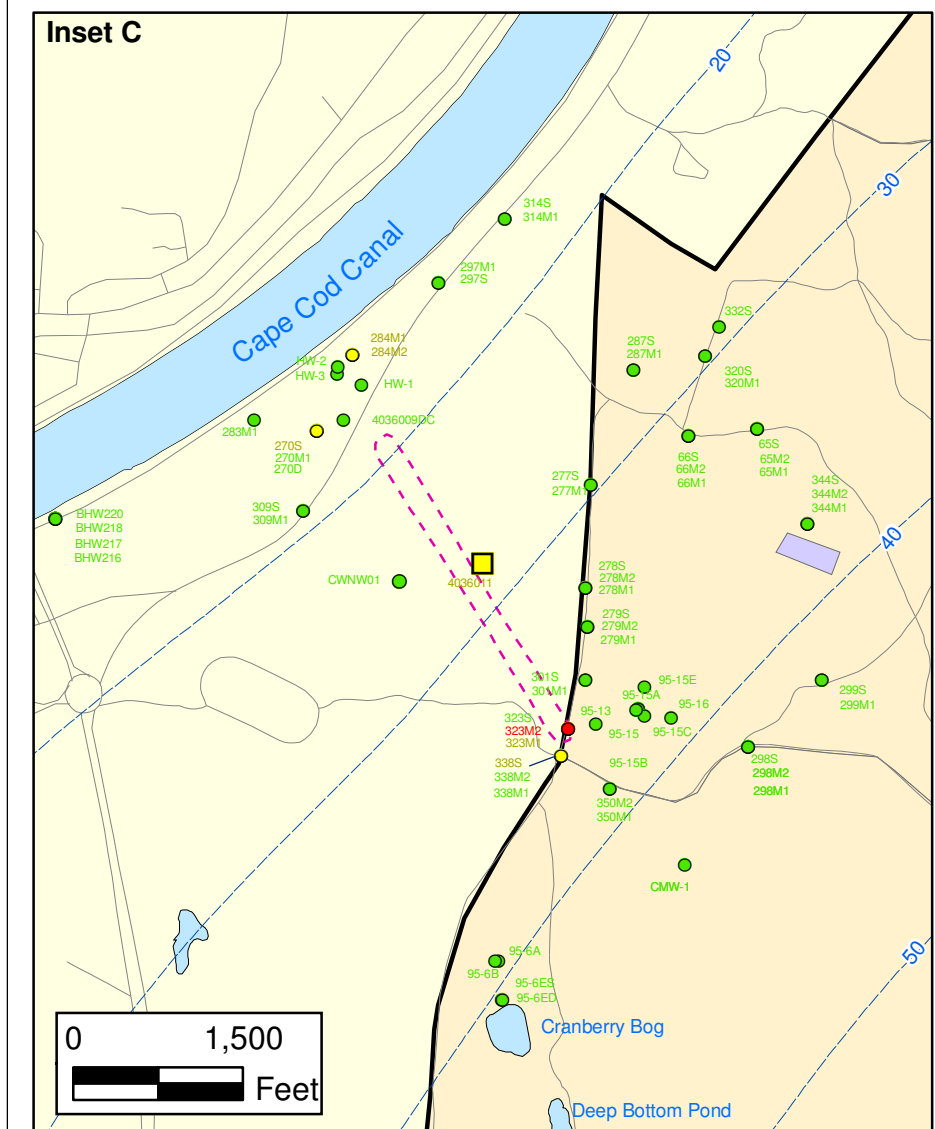
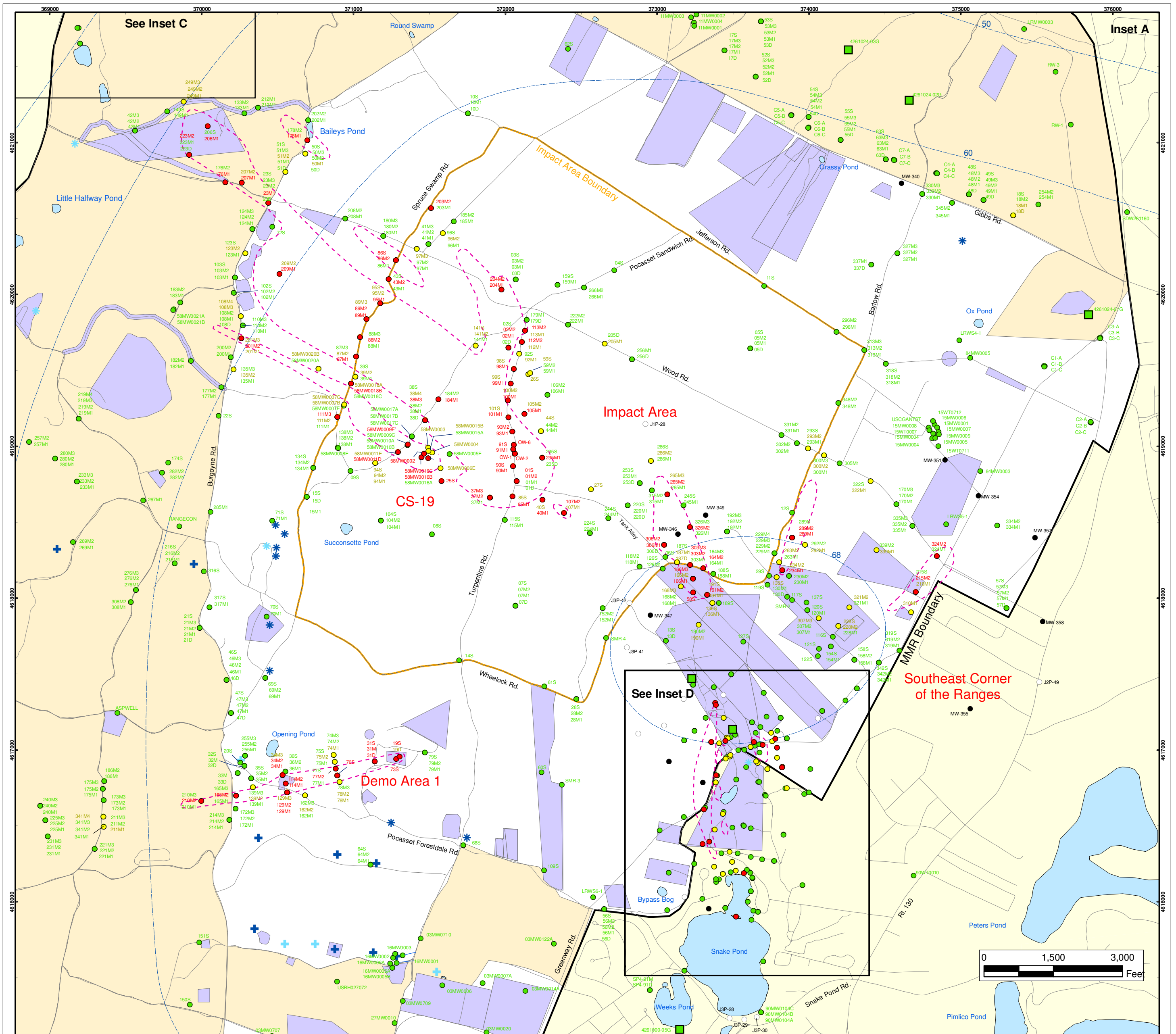
AMEC Earth & Environmental, Inc.  
 Westford, Massachusetts

**Explosives in Groundwater Compared to  
 Maximum Contaminant Level/Health Advisories  
 Validated Data as of 12/23/04**

FIGURE

1





### Explosives in Groundwater Compared to Maximum Contaminant Level/Health Advisories Validated Data as of 12/23/04

- Validated Detection Greater than or Equal to Maximum Contaminant Level/Health Advisories
- Validated Detection Less than Maximum Contaminant Level/Health Advisories
- Validated Non-Detect
- No Data Available
- Proposed Monitoring Well
- Military Training Areas
- Military Ranges
- ⊕ Current Gun Position
- ⊕ Current Mortar Position
- ⊕ Old Gun Position
- ⊕ Old Mortar Position
- Validated Non-Detect Water Supply Well
- Validated Detection Less than Maximum Contaminant Level/Health Advisories Water Supply Well
- Water Table Contour (Feet NGVD), AMEC, September 2003
- Area of RDX Detections Greater than 2.0 ppb
- Central Impact Area 7/15/03
- Demo 1 12/21/04
- SE Ranges (Jacobs Eng.) 10/21/04
- NWC 8/17/04

**Impact Area Groundwater Study Program**

**DRAFT**

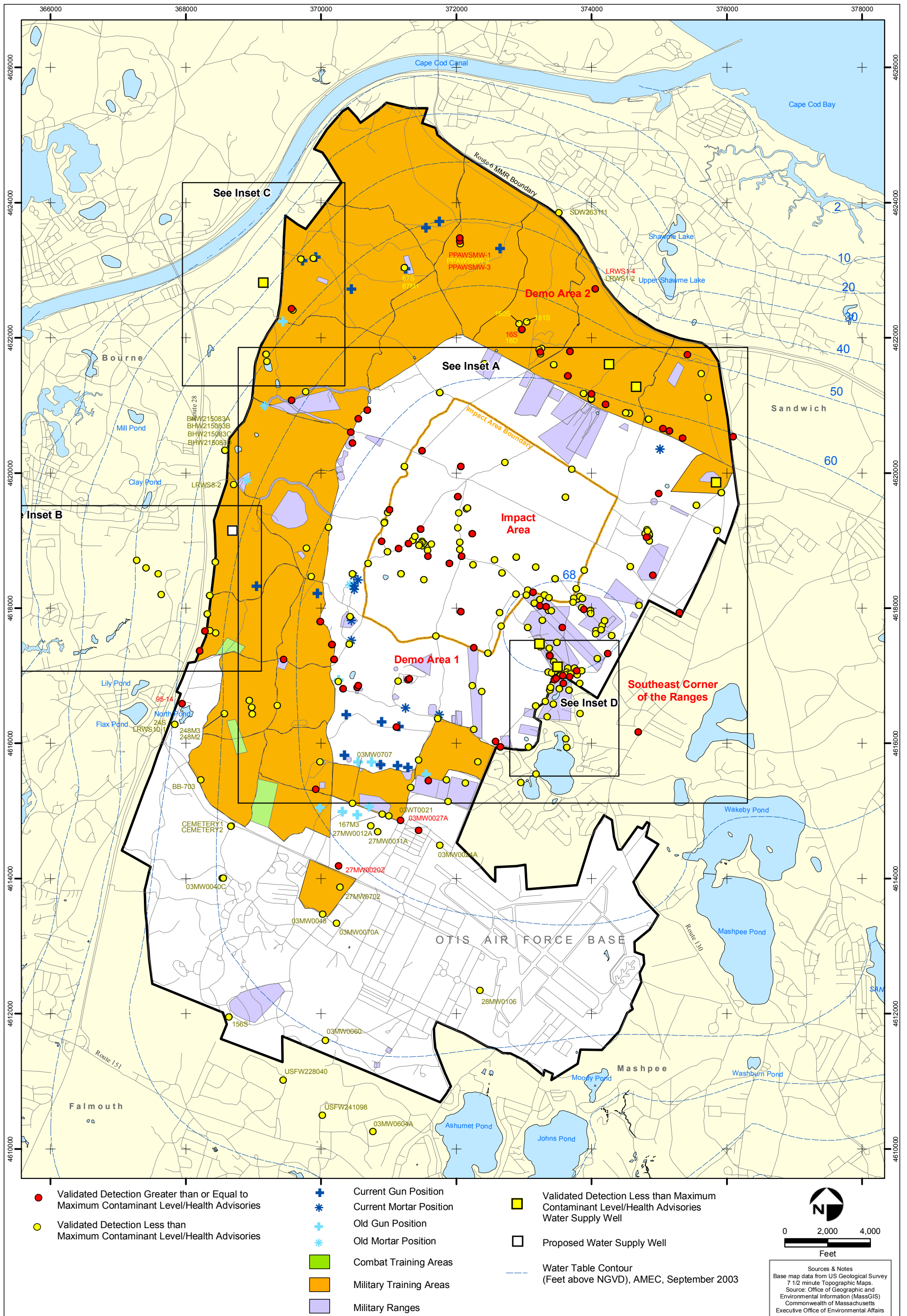
AMEC Earth & Environmental, Inc.  
Westford, Massachusetts

**FIGURE 1**  
**Inset Map**

Sources & Notes  
Base map data from US Geological Survey 7.12 minute Topographic Maps.  
Source: Office of Geographic and Environmental Information (MassGIS)  
Commonwealth of Massachusetts  
Executive Office of Environmental Affairs







**DRAFT**

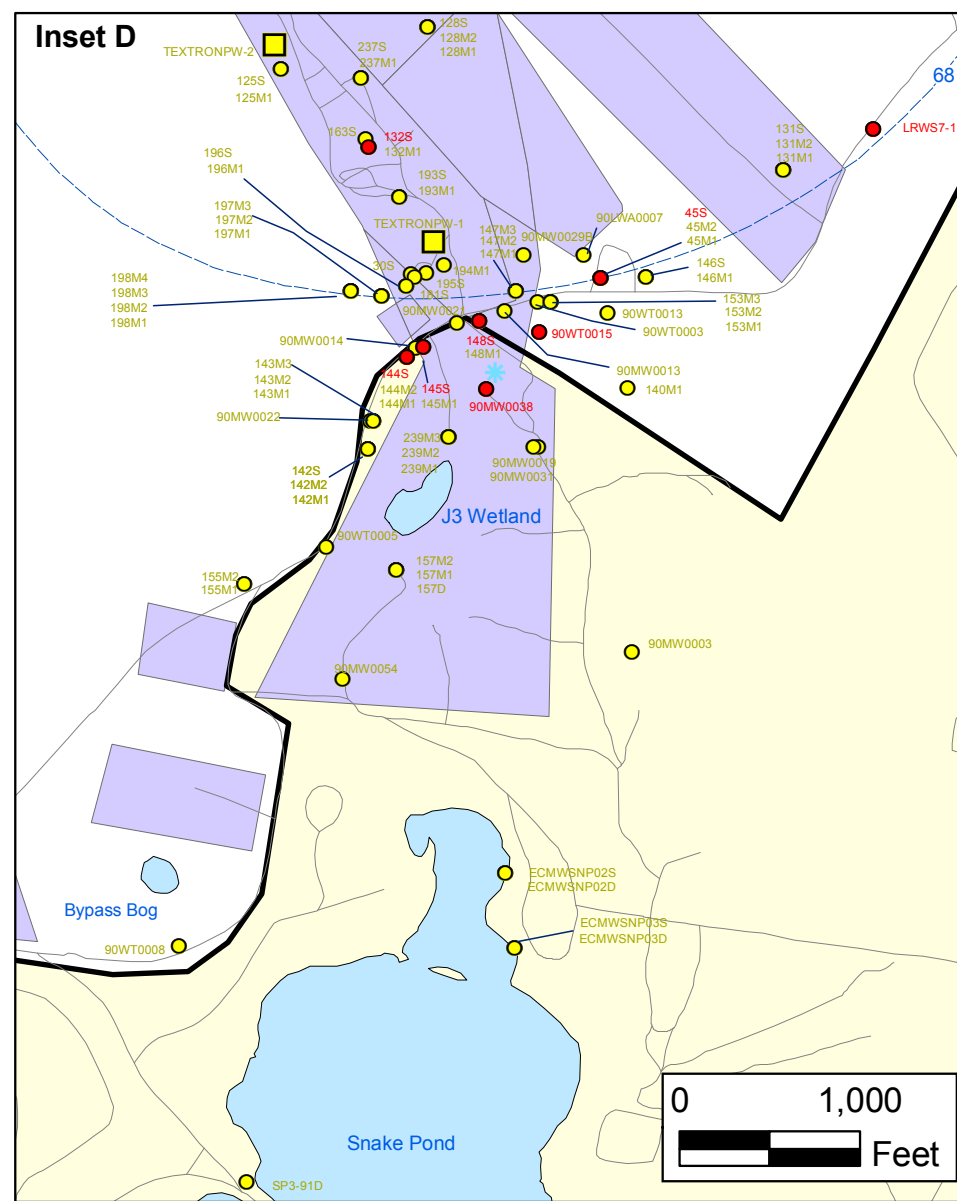
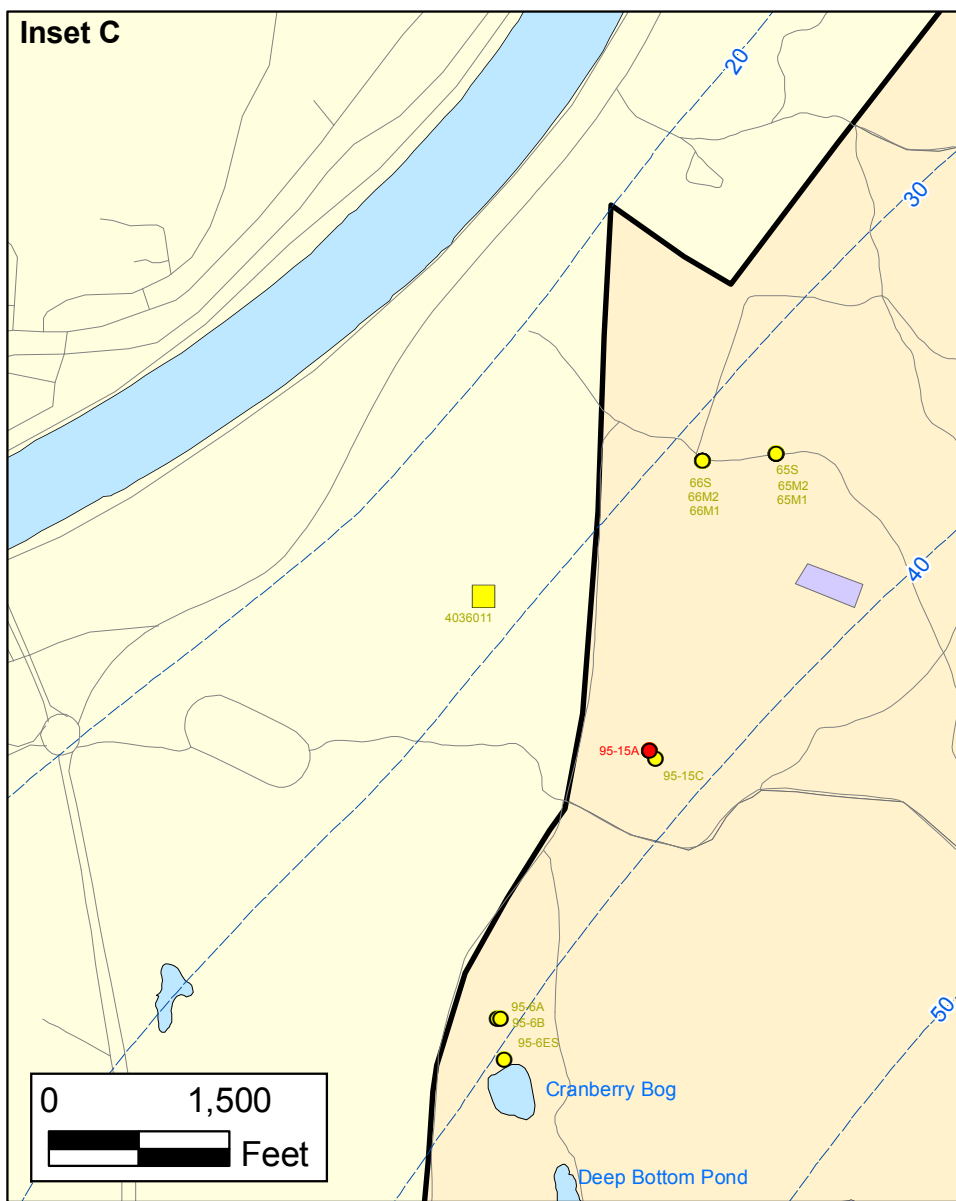
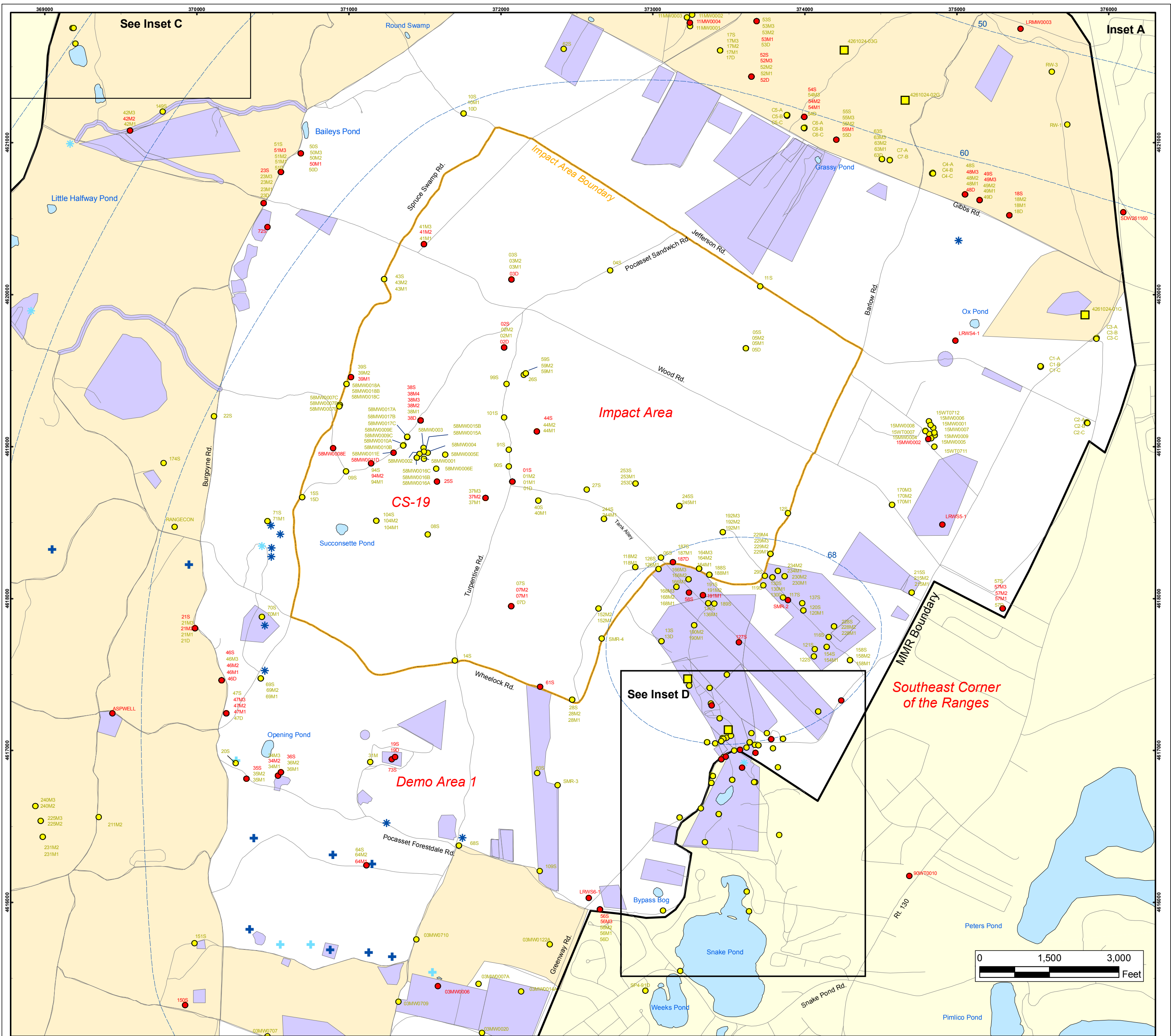
AMEC Earth & Environmental, Inc.  
 Westford, Massachusetts

**Metals in Groundwater Compared to  
 Maximum Contaminant Level/Health Advisories  
 Validated Data as of 12/23/04**

**FIGURE**

**2**





### Metals in Groundwater Compared to Maximum Contaminant Level/Health Advisories Validated Data as of 12/23/04

- Validated Detection Greater than or Equal to Maximum Contaminant Level/Health Advisories
- Validated Detection Less than Maximum Contaminant Level/Health Advisories
- Military Training Areas
- Military Ranges
- + Current Gun Position
- \* Current Mortar Position
- + Old Gun Position
- \* Old Mortar Position
- Validated Detection Less than Maximum Contaminant Level/Health Advisories Water Supply Well
- Water Table Contour (Feet NGVD), AMEC, September 2003

**Impact Area Groundwater Study Program**

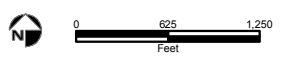
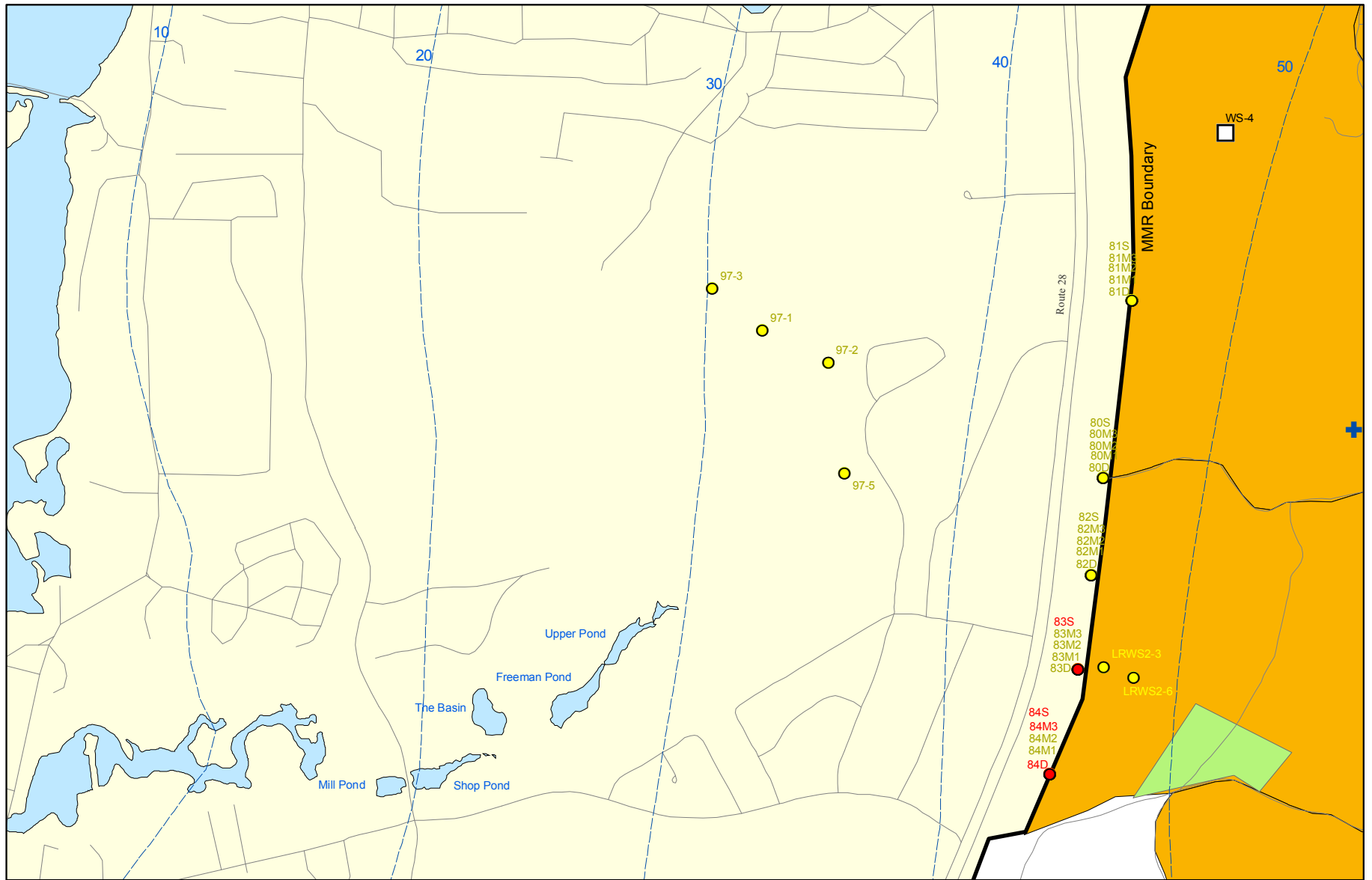
**DRAFT**

AMEC Earth & Environmental, Inc.  
Westford, Massachusetts

**FIGURE 2**

**Inset Map**

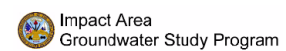
Sources & Notes  
Base map data from US Geological Survey 7 1/2 minute Topographic Maps  
Source: Office of Geographic and Environmental Information (MassGIS)  
Commonwealth of Massachusetts  
Executive Office of Environmental Affairs



Sources & Notes:  
 Base map data from US Geological Survey  
 7 1/2 minute Topographic maps.  
 Source: Office of Geographic and  
 Environmental Information (MassGIS)  
 Commonwealth of Massachusetts  
 Executive Office of Environmental Affairs

- Validated Detection Greater than or Equal to Maximum Contaminant Level/Health Advisories
- Validated Detection Less than Maximum Contaminant Level/Health Advisories
- + Current Gun Position
- Proposed Water Supply Well
- Combat Training Areas
- Military Training Areas
- Water Table Contour (Feet NGVD)  
AMEC, September 2003

**Metals in Groundwater Compared to Maximum Contaminant Level/Health Advisories Validated Data as of 12/23/04**



AMEC Earth & Environmental, Inc.  
 Westford, Massachusetts **DRAFT**

**Inset Map B** 2 **FIGURE**