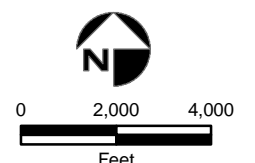


- Validated Detection Greater than or Equal to Maximum Contaminant Level/Health Advisories
- Validated Detection Less than Maximum Contaminant Level/Health Advisories
- Validated Non-Detect
- No Data Available
- Proposed Monitoring Well

- ⊕ Current Gun Position
- ⊕ Current Mortar Position
- ⊕ Old Gun Position
- ⊕ Old Mortar Position
- Combat Training Areas
- Military Training Areas
- Military Ranges

- Validated Non-Detect Water Supply Well
- Validated Detection Less than Maximum Contaminant Level/Health Advisories Water Supply Well
- Proposed Water Supply Well
- Water Table Contour (Feet NGVD) AMEC, September 2003
- - - Area of RDX Detections Greater than 2.0 ppb  
Central Impact Area 7/15/03  
J2 Range (Jacobs Eng.) 5/18/04  
Southeast Ranges 4/26/04  
Demo 1 8/23/04

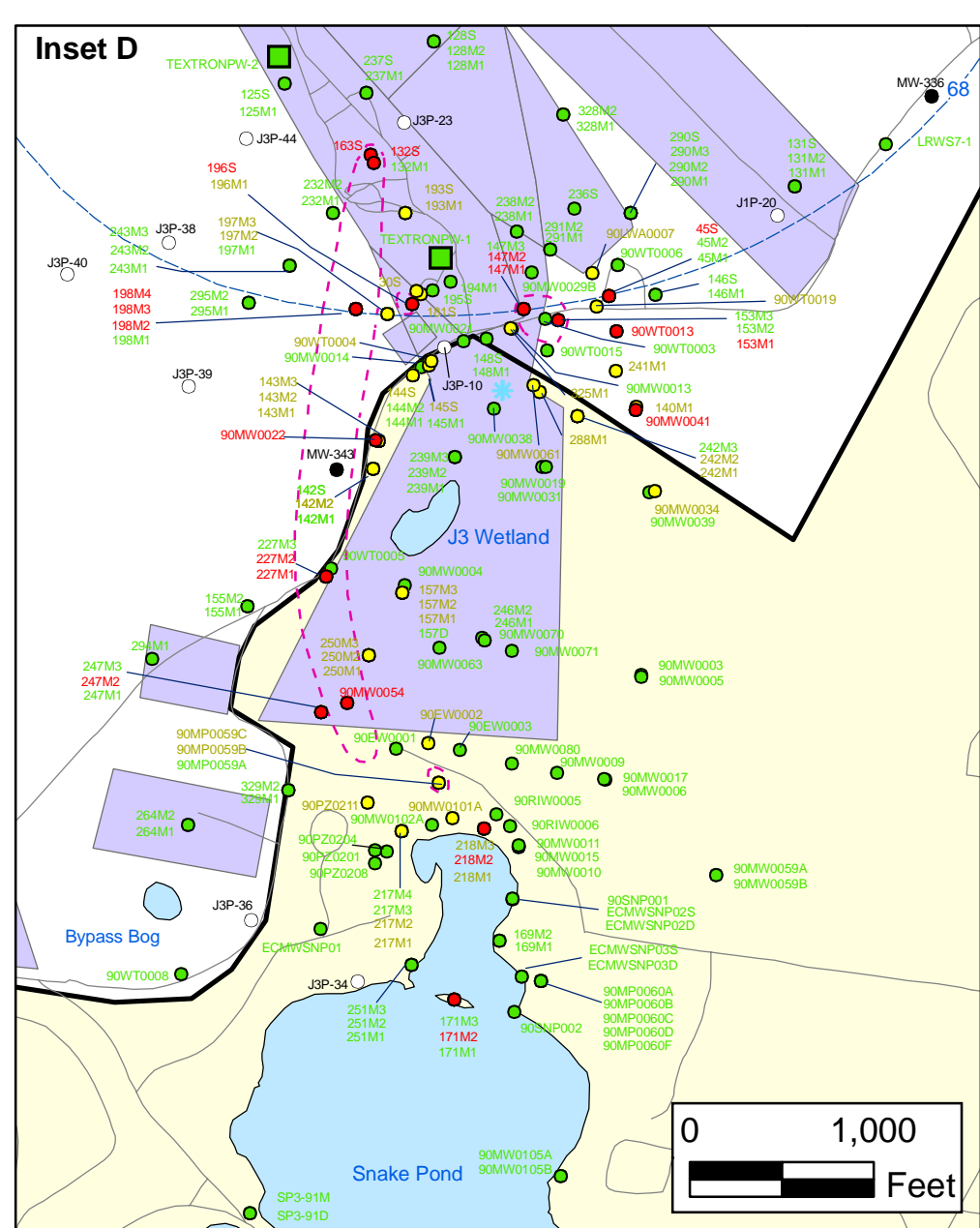
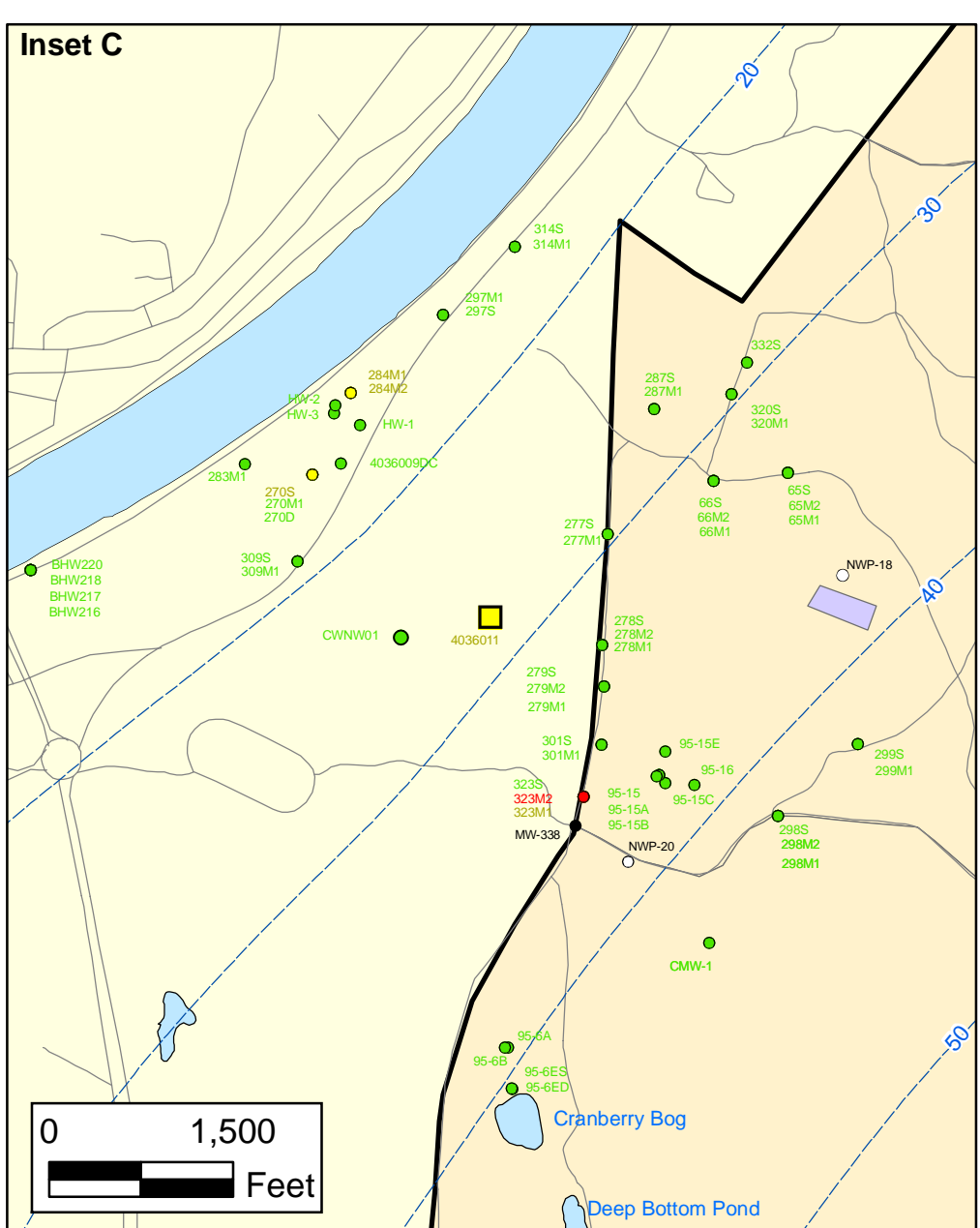
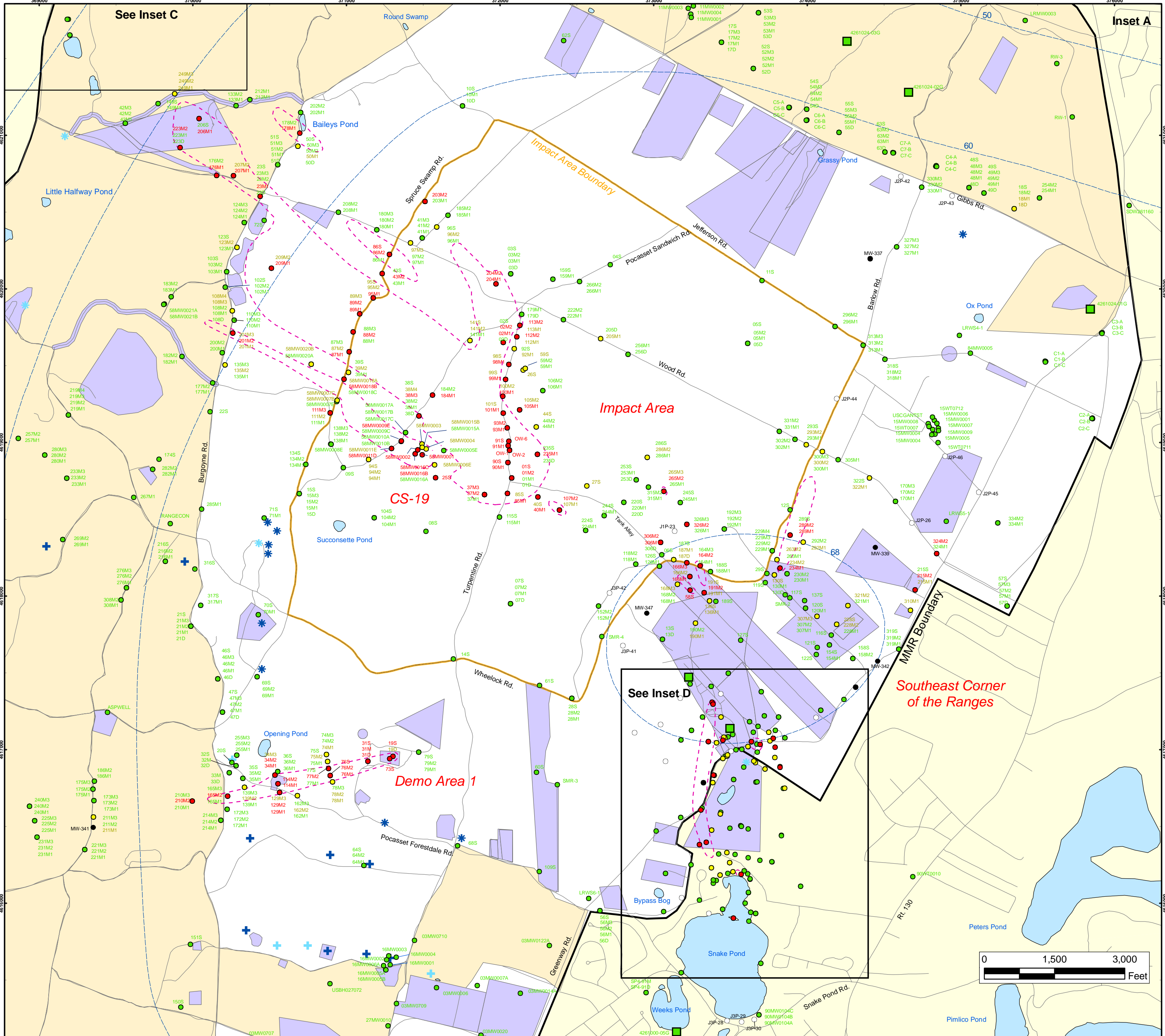


Sources & Notes  
 Base map data from US Geological Survey  
 7 1/2 minute Topographic Maps.  
 Source: Office of Geographic and  
 Environmental Information (MassGIS)  
 Commonwealth of Massachusetts  
 Executive Office of Environmental Affairs

**DRAFT**  
 AMEC Earth & Environmental, Inc.  
 Westford, Massachusetts

**Explosives in Groundwater Compared to  
 Maximum Contaminant Level/Health Advisories  
 Validated Data as of 08/27/04**

**FIGURE  
 1**



### Explosives in Groundwater Compared to Maximum Contaminant Level/Health Advisories Validated Data as of 08/27/04

- Validated Detection Greater than or Equal to Maximum Contaminant Level/Health Advisories
- Validated Detection Less than Maximum Contaminant Level/Health Advisories
- Validated Non-Detect
- No Data Available
- Proposed Monitoring Well
- Military Training Areas
- Military Ranges
- + Current Gun Position
- \* Current Mortar Position
- + Old Gun Position
- \* Old Mortar Position
- Validated Non-Detect Water Supply Well
- Validated Detection Less than Maximum Contaminant Level/Health Advisories Water Supply Well
- Water Table Contour (Feet NGVD), AMEC, September 2003
- Area of RDX Detections Greater than 2.0 ppb\*

\*Central Impact Area 7/15/03      J2 Range (Jacobs Eng.) 5/18/04  
 Southeast Ranges 4/26/04      Demo 1 5/3/04

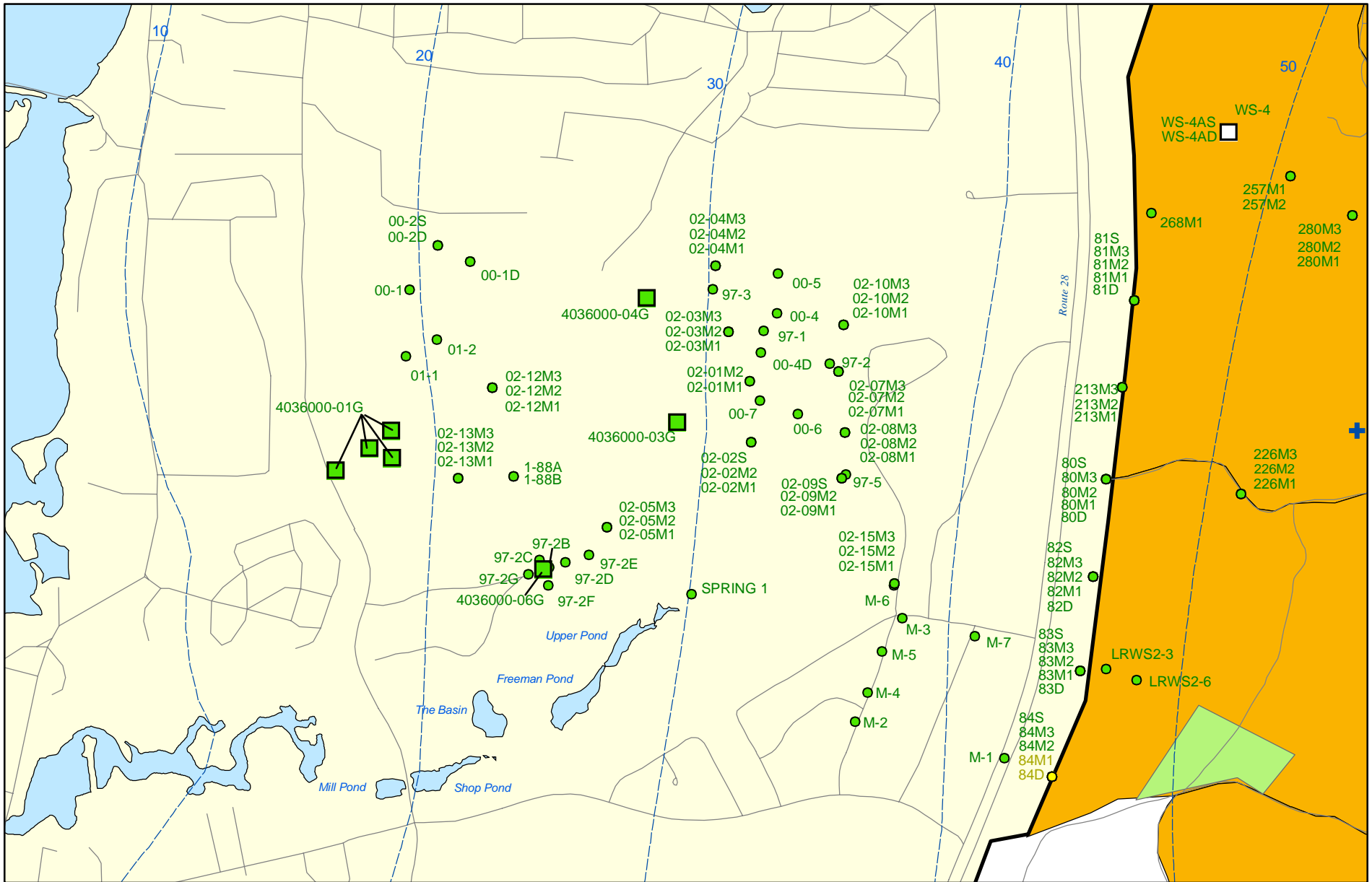
**Impact Area  
Groundwater Study Program**

**DRAFT**

AMEC Earth & Environmental, Inc.  
Westford, Massachusetts

**FIGURE  
1**

**Inset Map**



Sources & Notes:  
 Base map data from US Geological Survey  
 7 1/2 minute Topographic maps.  
 Source: Office of Geographic and  
 Environmental Information (MassGIS)  
 Commonwealth of Massachusetts  
 Executive Office of Environmental Affairs

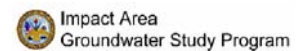
AMEC Earth & Environmental, Inc.  
 Westford, Massachusetts

**DRAFT**

- Validated Detection Less than Maximum Contaminant Level/Health Advisories
- Validated Non-Detect
- +

- Validated Non-Detect Water Supply Well
- Proposed Water Supply Well
- Combat Training Areas
- Military Training Areas
- Water Table Contour (Feet NGVD)  
 AMEC, September 2003

**Explosives in Groundwater Compared to  
 Maximum Contaminant Level/Health Advisories  
 Validated Data as of 08/27/04**



FIGURE

**Inset Map B**

**1**